
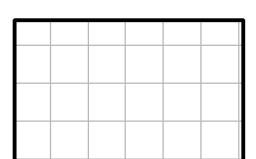
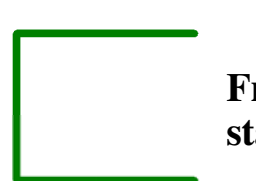




© WCEC ARCHITECTS - DISCLAIMER  
This drawing is copyright and shall not be reproduced or used for any other purpose without the written permission of the Architects.  
This drawing must be read in conjunction with all other related drawings and documentation.  
It is the contractors responsibility to ensure full compliance with the Building Regulations.  
Do not scale from this drawing, use figured dimensions only.  
It is the contractors responsibility to check and verify all dimensions on site.  
Any discrepancies to be reported immediately.  
IF IN DOUBT ASK.  
Materials not in conformity with relevant British or European Standards/Codes of practice or materials known to be deleterious to health & safety must not be used or specified on this project.  
Materials known to contain asbestos contaminated materials (ACM's) in the manufacture or installation process have not been specified and must not be used on this project



Block Location Plan

-  Balcony/external amenity space
-  Balcony/External Terrace Space
-  Front garden replacing stairwell

P2	09.04.14	Cycle and bin storage provisions amended to comply with LHDG standards. Secure by design requirements incorporated. Apartment layouts amended, service and lift core rationalised. Basement and ramp removed.	
Rev	Date	Description	By



PROJECT  
Royal Wharf,  
Development Phase 1

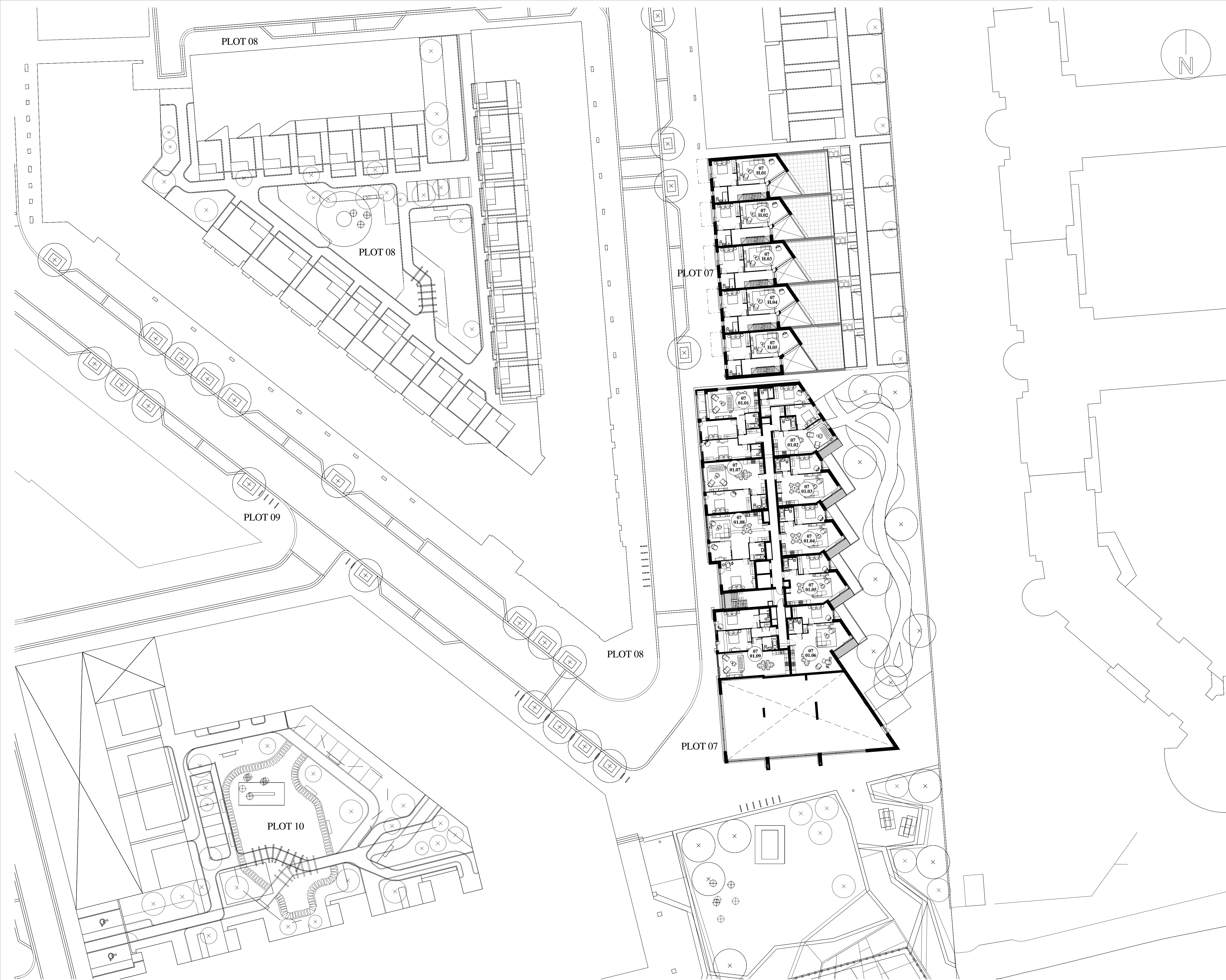
TITLE  
Plot 07 Ground Floor Plan

DRAWING STATUS			
PLANNING APPROVAL			
DRAWN	MB	CHECKED	MB
SCALE	1-250 @ A1 / 1-500 @ A3		
DATE	09/04/14		

**wcec**architects  
4th Floor, South Building, Staple Inn Buildings,  
High Holborn, London, WC1V 7PZ  
Canwood Court, Canwood Road,  
Sheepbridge, Chesterfield, S41 9QB  
t: 020 3388 0019, e: email@wcec.co.uk, www.wcec.co.uk

JOB NO.	DRAWING NO.	REV
13-500	DPA-07-100	P2



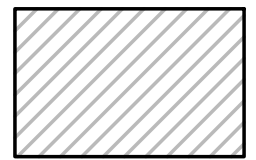


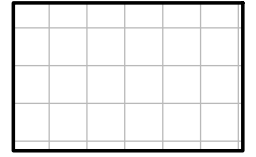
© WCEC ARCHITECTS - DISCLAIMER

This drawing is copyright and shall not be reproduced or used for any other purpose without the written permission of the Architects. This drawing must be read in conjunction with all other related drawings and documentation. It is the contractors responsibility to ensure full compliance with the Building Regulations. Do not scale from this drawing, use figured dimensions only. It is the contractors responsibility to check and verify all dimensions on site. Any discrepancies to be reported immediately. IF IN DOUBT ASK. Materials not in conformity with relevant British or European Standards/Codes of practice or materials known to be deleterious to health & safety must not be used or specified on this project. Materials known to contain asbestos contaminated materials (ACM's) in the manufacture or installation process have not been specified and must not be used on this project



**Block Location Plan**

**Balcony/external amenity space**

**Balcony/External Terrace Space**

P2	09.04.14	Cycle and bin storage provisions amended to comply with LHDG standards. Secure by design requirements incorporated. Apartment layouts amended, service and lift core rationalised. Basement and ramp removed.	
Rev	Date	Description	By



PROJECT  
Royal Wharf,  
Development Phase 1

TITLE  
Plot 07 First Floor Plan

DRAWING STATUS			
PLANNING APPROVAL			
DRAWN	MB	CHECKED	MB
SCALE	As indicated @ A1		
DATE	09/04/14		

**wcec**architects

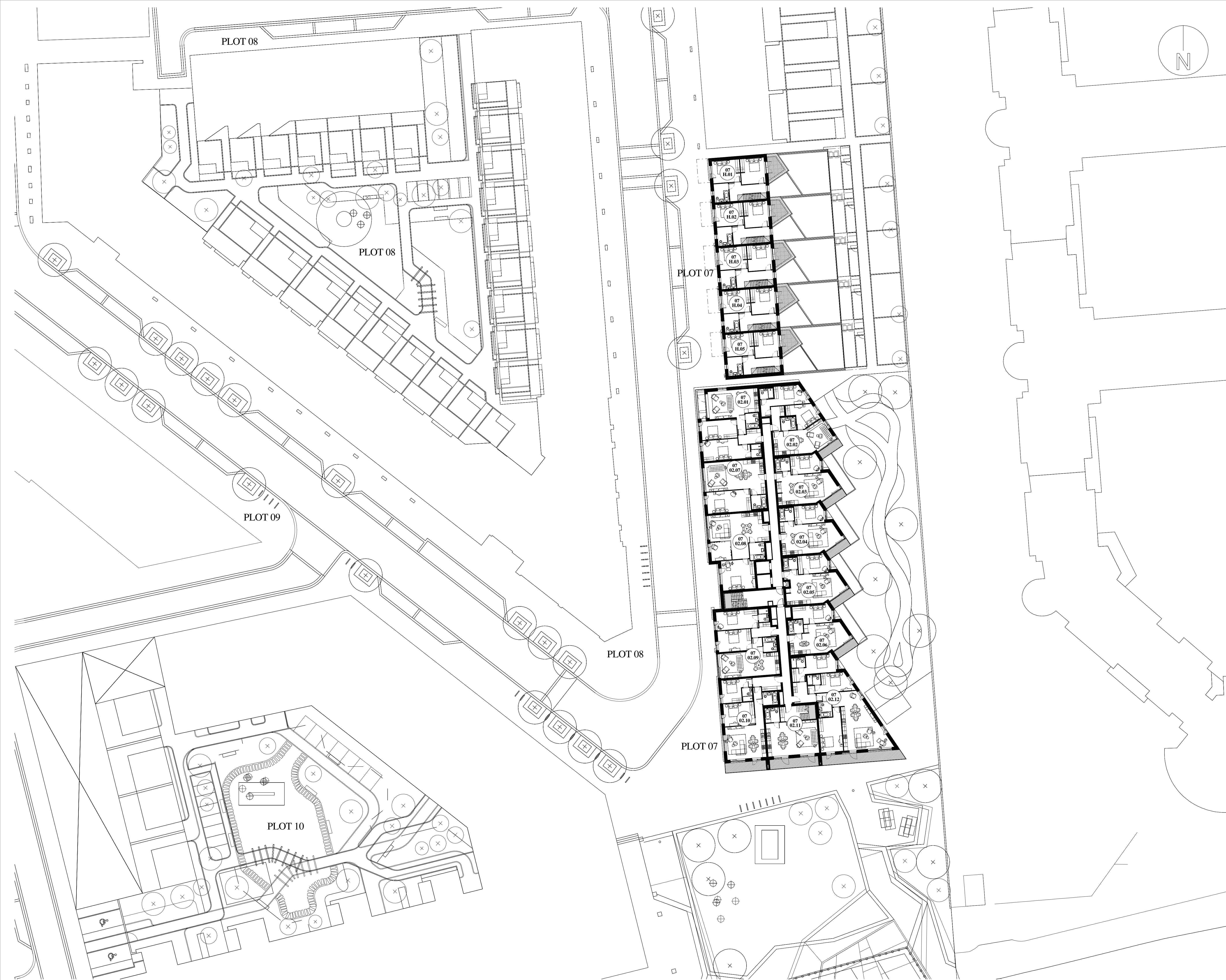
4th Floor, South Building, Staple Inn Buildings,  
High Holborn, London, WC1V 7PZ

Carnwood Court, Carnwood Road,  
Sheepbridge, Chesterfield, S41 9QB

t: 020 3388 0019, e: email@wcec.co.uk, www.wcec.co.uk

JOB NO.	DRAWING NO.	REV
13-500	DPA-07-101	P2




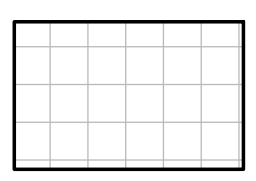


© WCEC ARCHITECTS - DISCLAIMER

This drawing is copyright and shall not be reproduced or used for any other purpose without the written permission of the Architects. This drawing must be read in conjunction with all other related drawings and documentation. It is the contractors responsibility to ensure full compliance with the Building Regulations. Do not scale from this drawing, use figured dimensions only. It is the contractors responsibility to check and verify all dimensions on site. Any discrepancies to be reported immediately. IF IN DOUBT ASK. Materials not in conformity with relevant British or European Standards/Codes of practice or materials known to be deleterious to health & safety must not be used or specified on this project. Materials known to contain asbestos contaminated materials (ACM's) in the manufacture or installation process have not been specified and must not be used on this project



### Block Location Plan

-  Balcony/external amenity space
-  Balcony/External Terrace Space

P2	09.04.14	Cycle and bin storage provisions amended to comply with LHDG standards. Secure by design requirements incorporated. Apartment layouts amended, service and lift core rationalised. Basement and ramp removed.	
Rev	Date	Description	By



PROJECT  
Royal Wharf,  
Development Phase 1

TITLE  
Plot 07 Second Floor Plan

DRAWING STATUS  
PLANNING APPROVAL

DRAWN	MB	CHECKED	MB
-------	----	---------	----

SCALE  
As indicated @ A1

DATE  
09/04/14

**wcec**architects

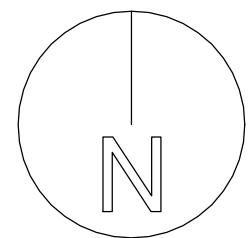
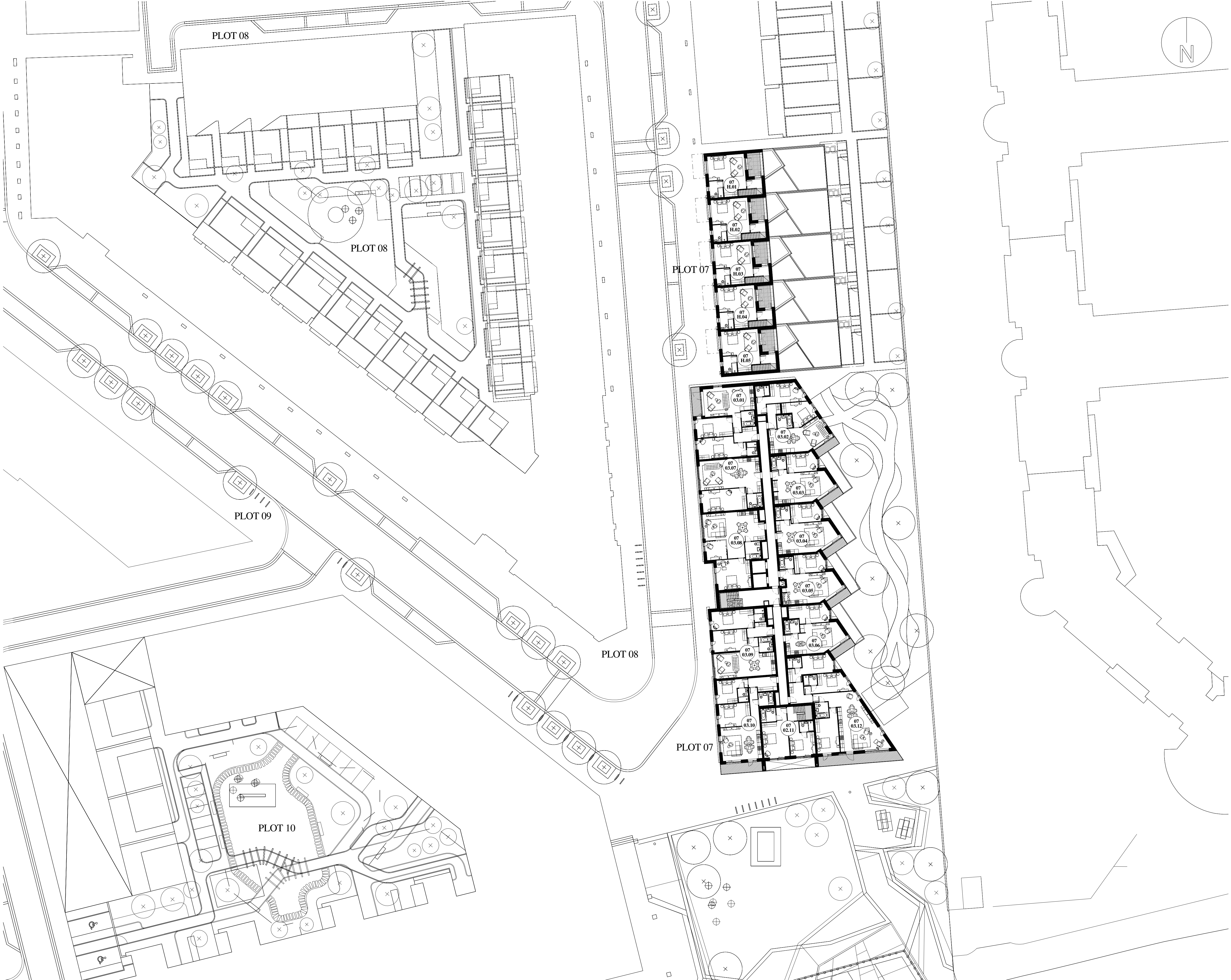
4th Floor, South Building, Staple Inn Buildings,  
High Holborn, London, WC1V 7PZ

Carnwood Court, Carnwood Road,  
Sheepbridge, Chesterfield, S41 9QB

t: 020 3388 0019, e: email@wcec.co.uk, www.wcec.co.uk

JOB NO. 13-500	DRAWING NO. DPA-07-102	REV P2
-------------------	---------------------------	-----------





© WCEC ARCHITECTS - DISCLAIMER

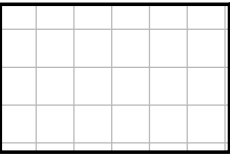
This drawing is copyright and shall not be reproduced or used for any other purpose without the written permission of the Architects. This drawing must be read in conjunction with all other related drawings and documentation. It is the contractors responsibility to ensure full compliance with the Building Regulations. Do not scale from this drawing, use figured dimensions only. It is the contractors responsibility to check and verify all dimensions on site. Any discrepancies to be reported immediately. IF IN DOUBT ASK. Materials not in conformity with relevant British or European Standards/Codes of practice or materials known to be deleterious to health & safety must not be used or specified on this project. Materials known to contain asbestos contaminated materials (ACM's) in the manufacture or installation process have not been specified and must not be used on this project



Block Location Plan



Balcony/external amenity space



Balcony/External Terrace Space

P2	09.04.14	Cycle and bin storage provisions amended to comply with LHDG standards. Secure by design requirements incorporated. Apartment layouts amended, service and lift core rationalised. Basement and ramp removed.	
Rev	Date	Description	By



PROJECT  
Royal Wharf,  
Development Phase 1

TITLE  
Plot 07 Third Floor Plan

DRAWING STATUS  
PLANNING APPROVAL

DRAWN	MB	CHECKED	MB
-------	----	---------	----

SCALE  
As indicated @ A1

DATE  
09/04/14

**wcec**architects

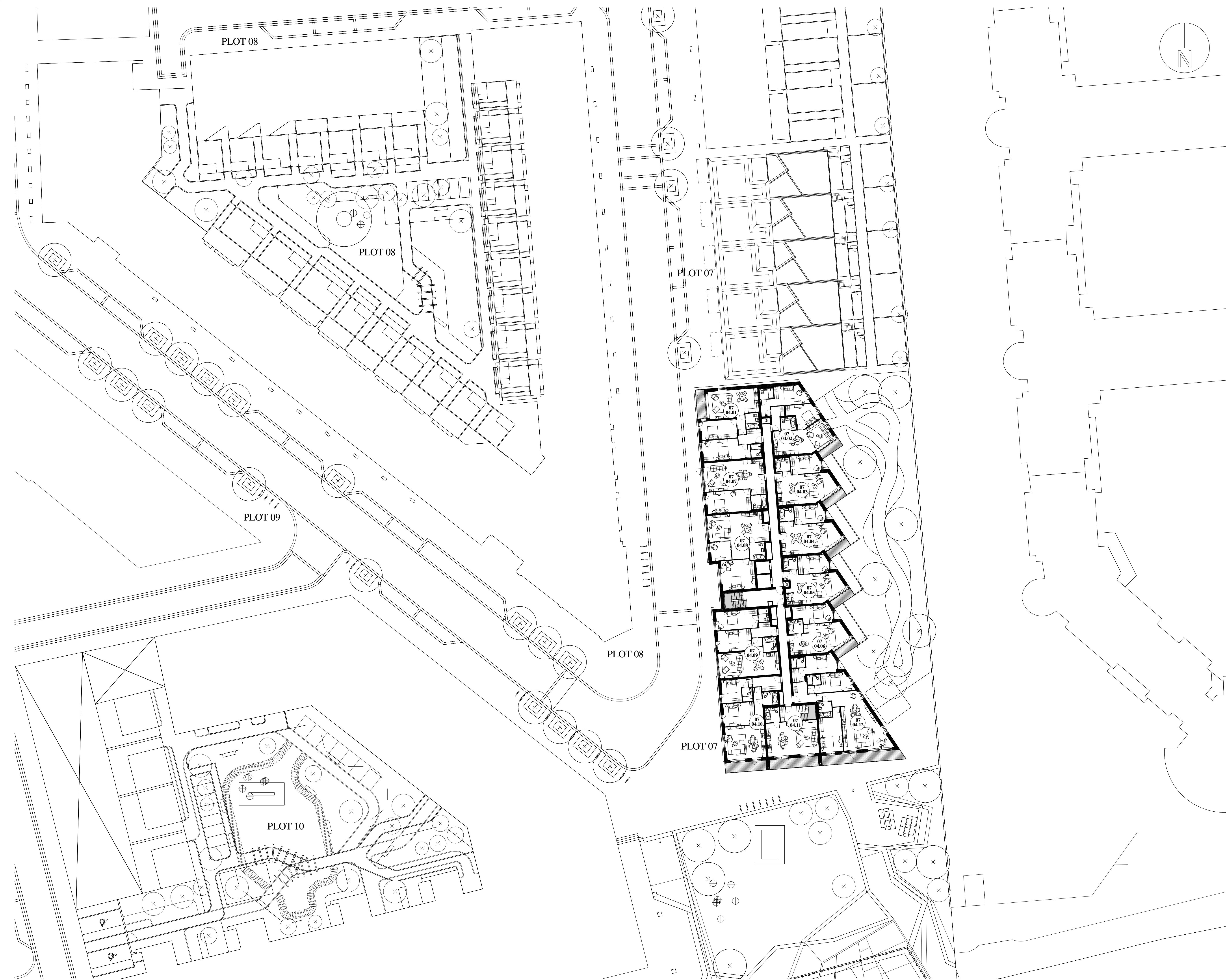
4th Floor, South Building, Staple Inn Buildings,  
High Holborn, London, WC1V 7PZ

Camwood Court, Camwood Road,  
Sheepbridge, Chesterfield, S41 9QB

t: 020 3388 0019, e: email@wcec.co.uk, www.wcec.co.uk

JOB NO. 13-500	DRAWING NO. DPA-07-103	REV P2
-------------------	---------------------------	-----------


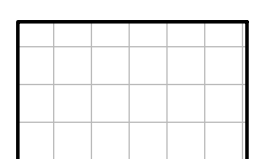




© WCEC ARCHITECTS - DISCLAIMER  
This drawing is copyright and shall not be reproduced or used for any other purpose without the written permission of the Architects.  
This drawing must be read in conjunction with all other related drawings and documentation.  
It is the contractors responsibility to ensure full compliance with the Building Regulations.  
Do not scale from this drawing, use figured dimensions only.  
It is the contractors responsibility to check and verify all dimensions on site.  
Any discrepancies to be reported immediately.  
IF IN DOUBT ASK.  
Materials not in conformity with relevant British or European Standards/Codes of practice or materials known to be deleterious to health & safety must not be used or specified on this project.  
Materials known to contain asbestos contaminated materials (ACM's) in the manufacture or installation process have not been specified and must not be used on this project



Block Location Plan

-  Balcony/external amenity space
-  Balcony/External Terrace Space

P2	09.04.14	Cycle and bin storage provisions amended to comply with LHDG standards. Secure by design requirements incorporated. Apartment layouts amended, service and lift core rationalised. Basement and ramp removed.	
Rev	Date	Description	By



PROJECT  
Royal Wharf,  
Development Phase 1

TITLE  
Plot 07 Fourth Floor Plan

DRAWING STATUS  
PLANNING APPROVAL

DRAWN	MB	CHECKED	MB
-------	----	---------	----

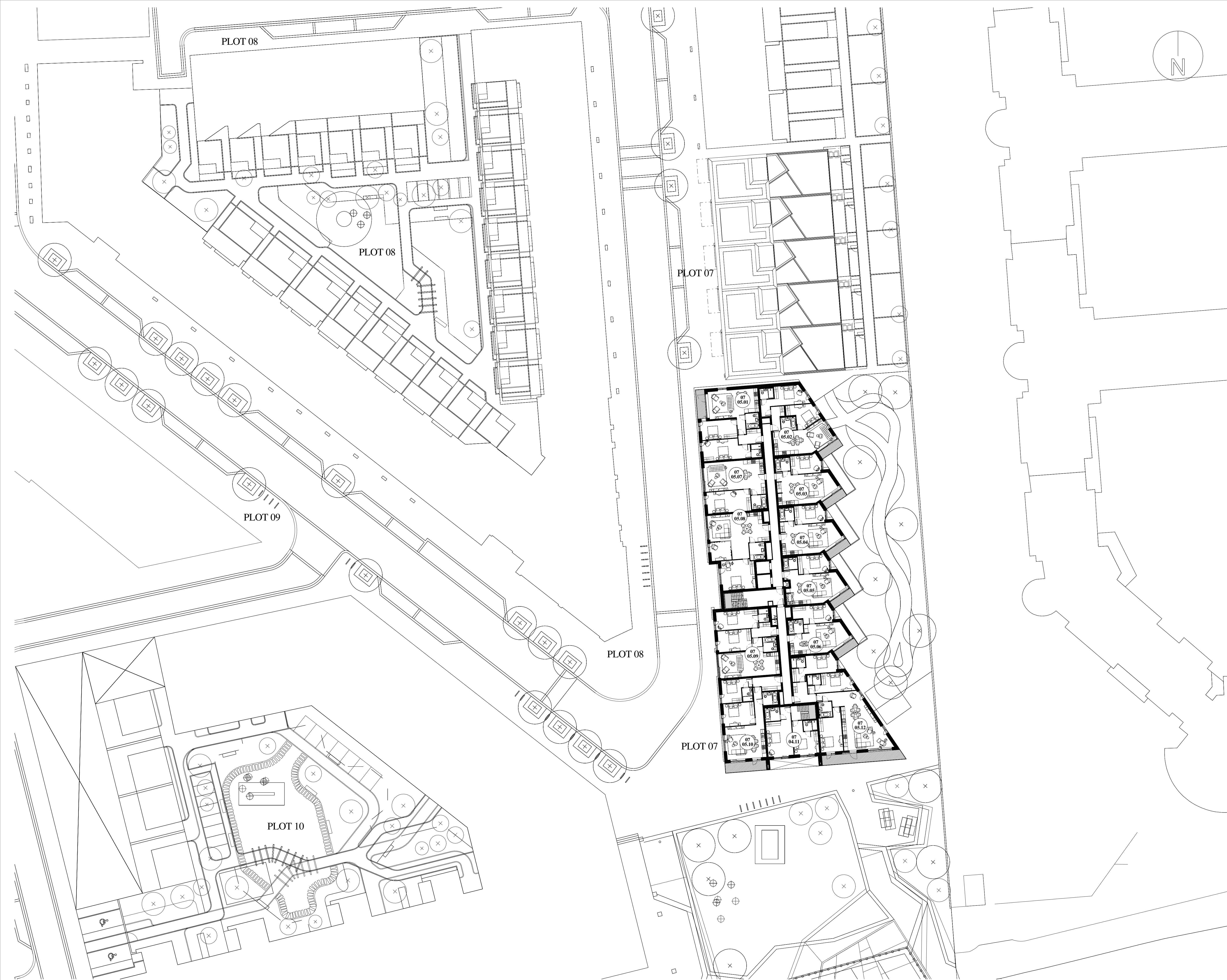
SCALE  
As indicated @ A1

DATE  
09/04/14

**wcec**architects  
4th Floor, South Building, Staple Inn Buildings,  
High Holborn, London, WC1V 7PZ  
Carnwood Court, Carnwood Road,  
Sheepbridge, Chesterfield, S41 9QB  
t: 020 3388 0019, e: email@wcec.co.uk, www.wcec.co.uk

JOB NO. 13-500	DRAWING NO. DPA-07-104	REV P2
-------------------	---------------------------	-----------


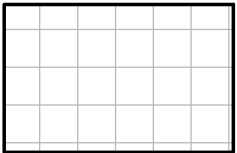




© WCEC ARCHITECTS - DISCLAIMER  
This drawing is copyright and shall not be reproduced or used for any other purpose without the written permission of the Architects.  
This drawing must be read in conjunction with all other related drawings and documentation.  
It is the contractors responsibility to ensure full compliance with the Building Regulations.  
Do not scale from this drawing, use figured dimensions only.  
It is the contractors responsibility to check and verify all dimensions on site.  
Any discrepancies to be reported immediately.  
IF IN DOUBT ASK.  
Materials not in conformity with relevant British or European Standards/Codes of practice or materials known to be deleterious to health & safety must not be used or specified on this project.  
Materials known to contain asbestos contaminated materials (ACM's) in the manufacture or installation process have not been specified and must not be used on this project



Block Location Plan

- **Balcony/external amenity space**
- **Balcony/External Terrace Space**

P2	09.04.14	Cycle and bin storage provisions amended to comply with LHDG standards. Secure by design requirements incorporated. Apartment layouts amended, service and lift core rationalised. Basement and ramp removed.	
Rev	Date	Description	By



PROJECT  
Royal Wharf,  
Development Phase 1

TITLE  
Plot 07 Fifth Floor Plan

DRAWING STATUS  
PLANNING APPROVAL

DRAWN	MB	CHECKED	MB
-------	----	---------	----

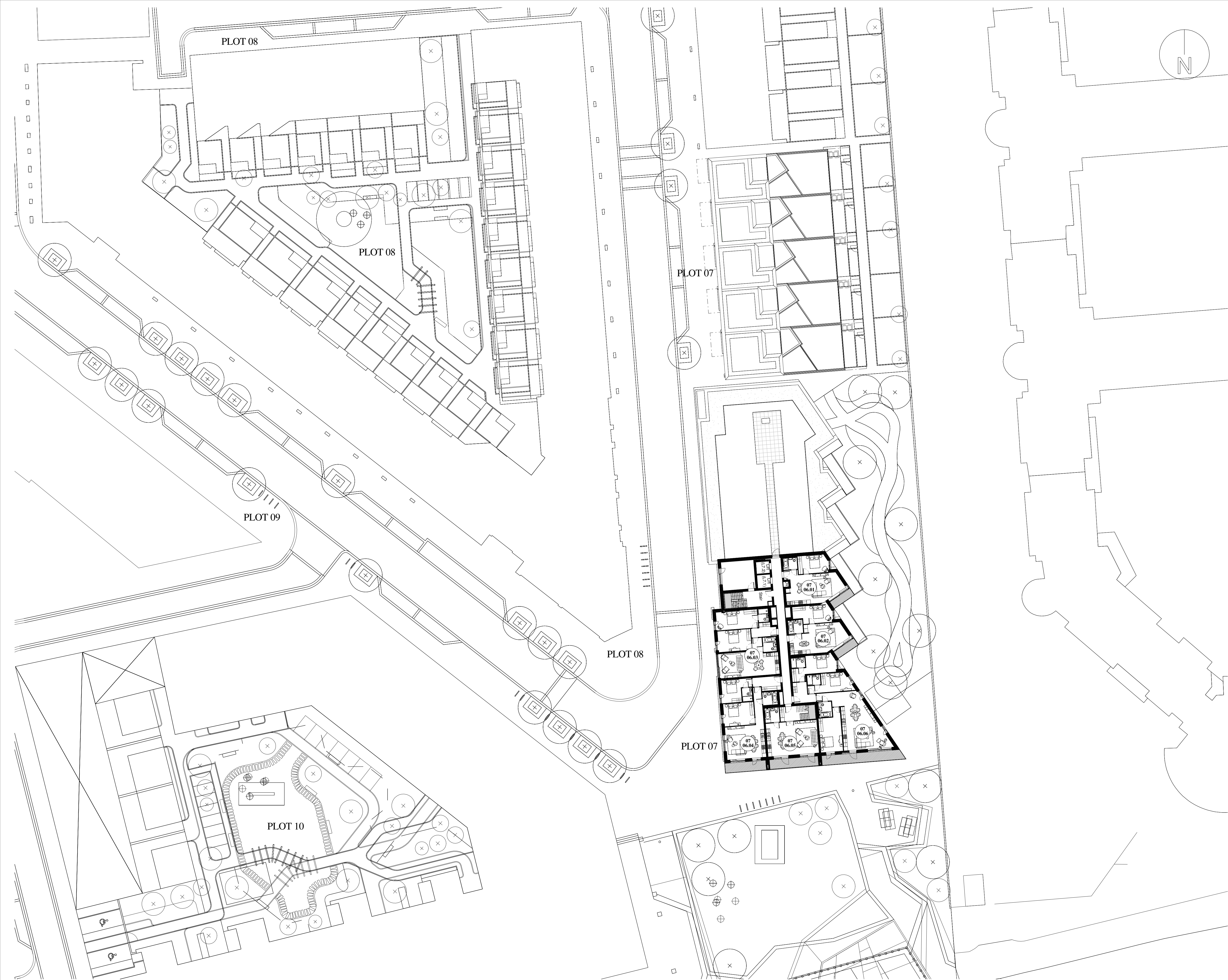
SCALE  
As indicated @ A1

DATE  
09/04/14

**wcec**architects  
4th Floor, South Building, Staple Inn Buildings,  
High Holborn, London, WC1V 7PZ  
Carnwood Court, Carnwood Road,  
Sheepbridge, Chesterfield, S41 9QB  
t: 020 3388 0019, e: email@wcec.co.uk, www.wcec.co.uk

JOB NO. 13-500	DRAWING NO. DPA-07-105	REV P2
-------------------	---------------------------	-----------



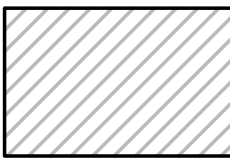
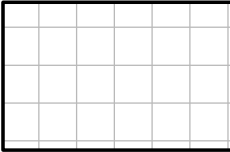


© WCEC ARCHITECTS - DISCLAIMER

This drawing is copyright and shall not be reproduced or used for any other purpose without the written permission of the Architects. This drawing must be read in conjunction with all other related drawings and documentation. It is the contractors responsibility to ensure full compliance with the Building Regulations. Do not scale from this drawing, use figured dimensions only. It is the contractors responsibility to check and verify all dimensions on site. Any discrepancies to be reported immediately. IF IN DOUBT ASK. Materials not in conformity with relevant British or European Standards/Codes of practice or materials known to be deleterious to health & safety must not be used or specified on this project. Materials known to contain asbestos contaminated materials (ACM's) in the manufacture or installation process have not been specified and must not be used on this project



Block Location Plan

- **Balcony/external amenity space**
- **Balcony/External Terrace Space**

P2	09.04.14	Cycle and bin storage provisions amended to comply with LHDG standards. Secure by design requirements incorporated. Apartment layouts amended, service and lift core rationalised. Basement and ramp removed.	
Rev	Date	Description	By



PROJECT  
Royal Wharf,  
Development Phase 1

TITLE  
Plot 07 Sixth Floor Plan

DRAWING STATUS  
PLANNING APPROVAL

DRAWN	MB	CHECKED	MB
-------	----	---------	----

SCALE  
As indicated @ A1

DATE  
09/04/14

**wcec**architects

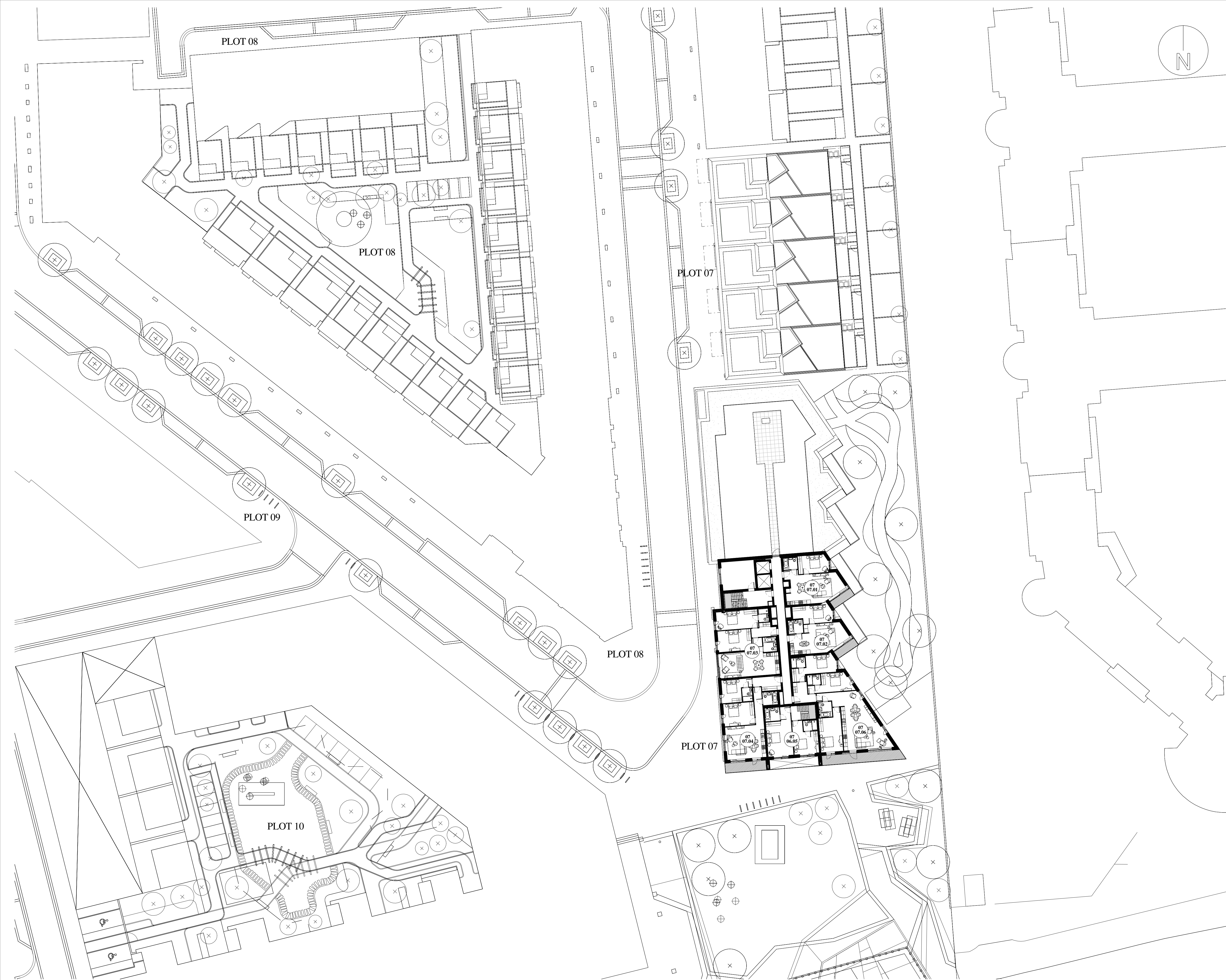
4th Floor, South Building, Staple Inn Buildings,  
High Holborn, London, WC1V 7PZ

Carnwood Court, Carnwood Road,  
Sheepbridge, Chesterfield, S41 9QB

t: 020 3388 0019, e: email@wcec.co.uk, www.wcec.co.uk

JOB NO.	DRAWING NO.	REV
13-500	DPA-07-106	P2





© WCEC ARCHITECTS - DISCLAIMER  
This drawing is copyright and shall not be reproduced or used for any other purpose without the written permission of the Architects.  
This drawing must be read in conjunction with all other related drawings and documentation.  
It is the contractors responsibility to ensure full compliance with the Building Regulations.  
Do not scale from this drawing, use figured dimensions only.  
It is the contractors responsibility to check and verify all dimensions on site.  
Any discrepancies to be reported immediately.  
IF IN DOUBT ASK.  
Materials not in conformity with relevant British or European Standards/Codes of practice or materials known to be deleterious to health & safety must not be used or specified on this project.  
Materials known to contain asbestos contaminated materials (ACM's) in the manufacture or installation process have not been specified and must not be used on this project



**Block Location Plan**

Balcony/external amenity space

Balcony/External Terrace Space

P2	09.04.14	Cycle and bin storage provisions amended to comply with LHDG standards. Secure by design requirements incorporated. Apartment layouts amended, service and lift core rationalised. Basement and ramp removed.	
Rev	Date	Description	By



PROJECT  
Royal Wharf,  
Development Phase 1

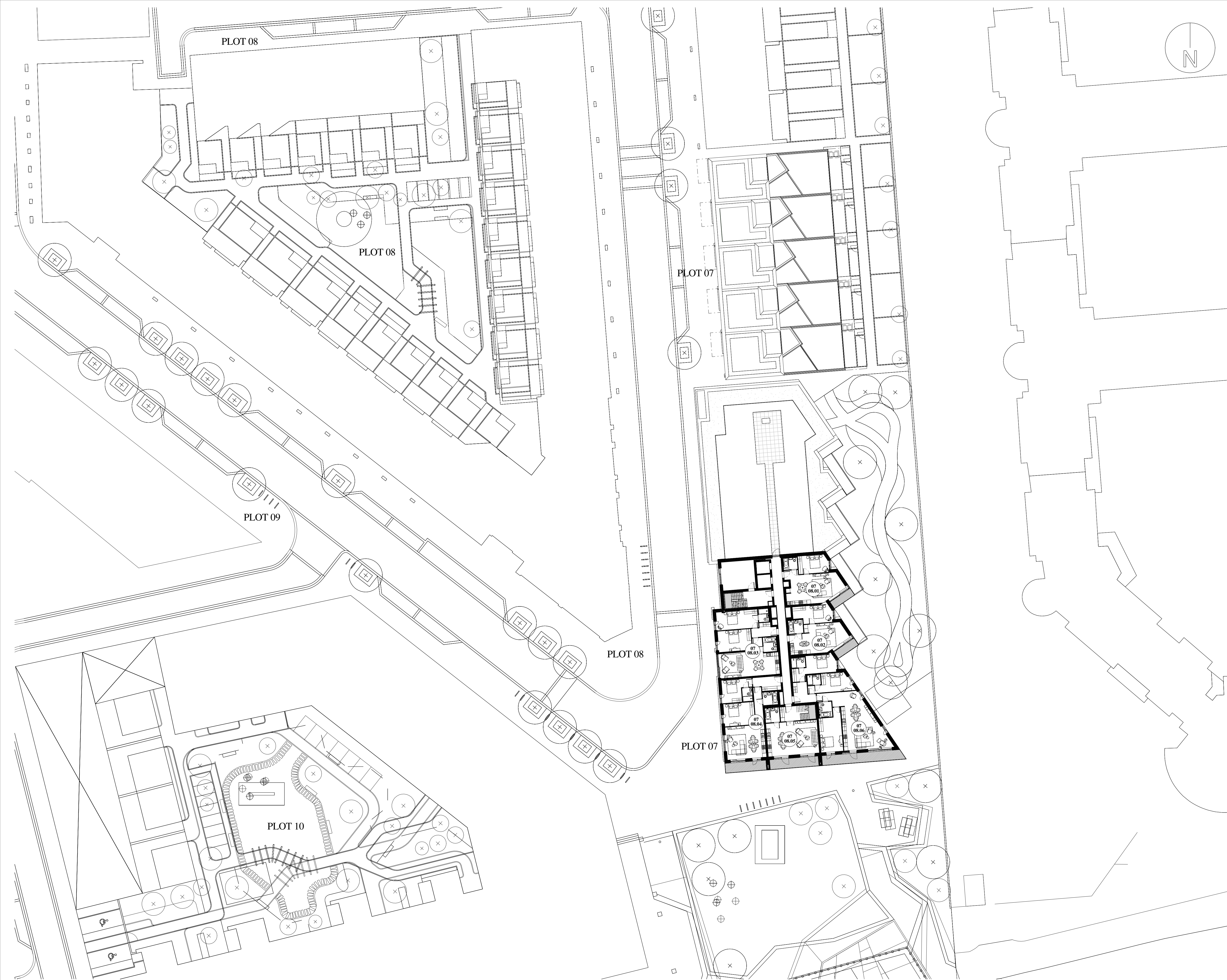
TITLE  
Plot 07 Seventh Floor Plan

DRAWING STATUS			
PLANNING APPROVAL			
DRAWN	MB	CHECKED	MB
SCALE	As indicated @ A1		
DATE	09/04/14		

**wcec**architects  
4th Floor, South Building, Staple Inn Buildings,  
High Holborn, London, WC1V 7PZ  
Canwood Court, Canwood Road,  
Sheepbridge, Chesterfield, S41 9QB  
t: 020 3388 0019, e: email@wcec.co.uk, www.wcec.co.uk

JOB NO.	DRAWING NO.	REV
13-500	DPA-07-107	P2





© WCEC ARCHITECTS - DISCLAIMER

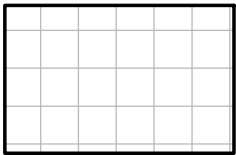
This drawing is copyright and shall not be reproduced or used for any other purpose without the written permission of the Architects. This drawing must be read in conjunction with all other related drawings and documentation. It is the contractors responsibility to ensure full compliance with the Building Regulations. Do not scale from this drawing, use figured dimensions only. It is the contractors responsibility to check and verify all dimensions on site. Any discrepancies to be reported immediately. IF IN DOUBT ASK. Materials not in conformity with relevant British or European Standards/Codes of practice or materials known to be deleterious to health & safety must not be used or specified on this project. Materials known to contain asbestos contaminated materials (ACM's) in the manufacture or installation process have not been specified and must not be used on this project



### Block Location Plan



Balcony/external amenity space



Balcony/External Terrace Space

P2	09.04.14	Cycle and bin storage provisions amended to comply with LHDG standards. Secure by design requirements incorporated. Apartment layouts amended, service and lift core rationalised. Basement and ramp removed.	
Rev	Date	Description	By



PROJECT  
Royal Wharf,  
Development Phase 1

TITLE  
Plot 07 Eighth Floor Plan

DRAWING STATUS  
PLANNING APPROVAL

DRAWN	MB	CHECKED	MB
-------	----	---------	----

SCALE  
As indicated @ A1

DATE  
09/04/14

**wcec**architects

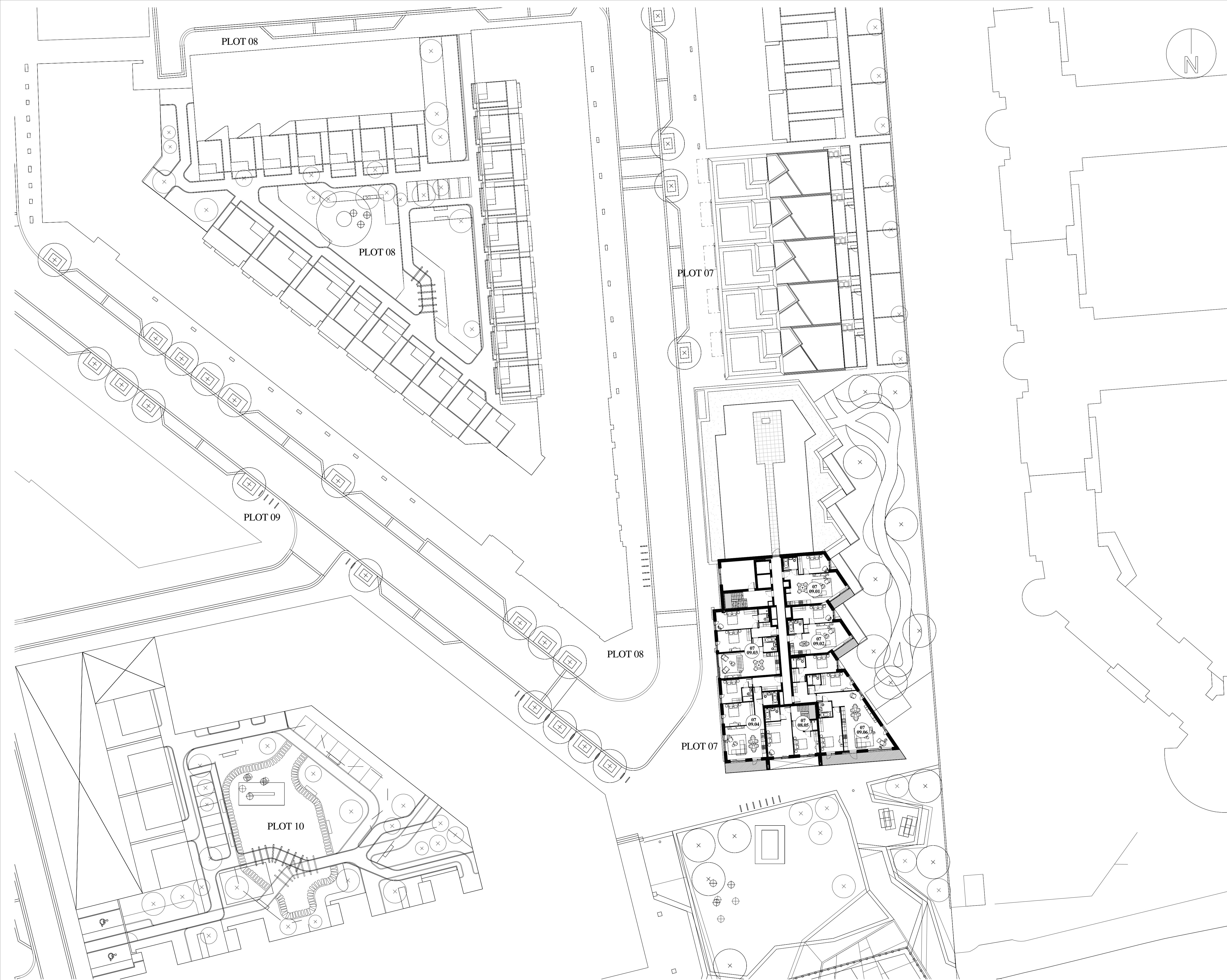
4th Floor, South Building, Staple Inn Buildings,  
High Holborn, London, WC1V 7PZ

Carnwood Court, Carnwood Road,  
Sheepbridge, Chesterfield, S41 9QB

t: 020 3388 0019, e: email@wcec.co.uk, www.wcec.co.uk

JOB NO. 13-500	DRAWING NO. DPA-07-108	REV P2
-------------------	---------------------------	-----------


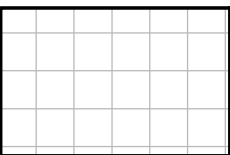




© WCEC ARCHITECTS - DISCLAIMER  
This drawing is copyright and shall not be reproduced or used for any other purpose without the written permission of the Architects.  
This drawing must be read in conjunction with all other related drawings and documentation.  
It is the contractors responsibility to ensure full compliance with the Building Regulations.  
Do not scale from this drawing, use figured dimensions only.  
It is the contractors responsibility to check and verify all dimensions on site.  
Any discrepancies to be reported immediately.  
IF IN DOUBT ASK.  
Materials not in conformity with relevant British or European Standards/Codes of practice or materials known to be deleterious to health & safety must not be used or specified on this project.  
Materials known to contain asbestos contaminated materials (ACM's) in the manufacture or installation process have not been specified and must not be used on this project



Block Location Plan

- **Balcony/external amenity space**
- **Balcony/External Terrace Space**

P2	09.04.14	Cycle and bin storage provisions amended to comply with LHDG standards. Secure by design requirements incorporated. Apartment layouts amended, service and lift core rationalised. Basement and ramp removed.	
Rev	Date	Description	By



PROJECT  
Royal Wharf,  
Development Phase 1

TITLE  
Plot 07 Ninth Floor Plan

DRAWING STATUS  
PLANNING APPROVAL

DRAWN	MB	CHECKED	MB
-------	----	---------	----

SCALE  
As indicated @ A1

DATE  
09/04/14

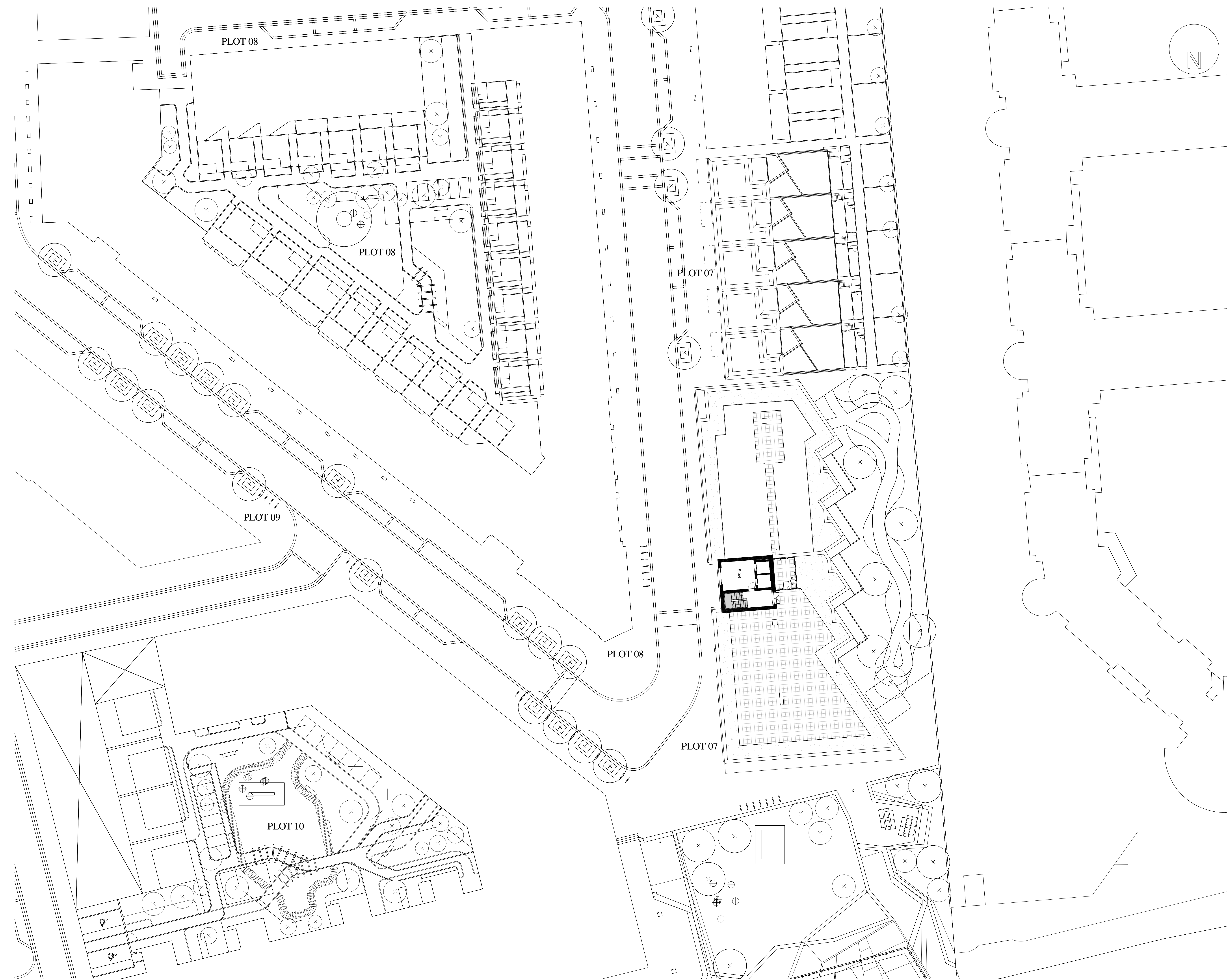
**wcec**architects

4th Floor, South Building, Staple Inn Buildings,  
High Holborn, London, WC1V 7PZ  
Carnwood Court, Carnwood Road,  
Sheepbridge, Chesterfield, S41 9QB

t: 020 3388 0019, e: email@wcec.co.uk, www.wcec.co.uk

JOB NO. 13-500	DRAWING NO. DPA-07-109	REV P2
-------------------	---------------------------	-----------





© WCEC ARCHITECTS - DISCLAIMER

This drawing is copyright and shall not be reproduced or used for any other purpose without the written permission of the Architects.

This drawing must be read in conjunction with all other related drawings and documentation.

It is the contractors responsibility to ensure full compliance with the Building Regulations.

Do not scale from this drawing, use figured dimensions only.

It is the contractors responsibility to check and verify all dimensions on site.

Any discrepancies to be reported immediately.

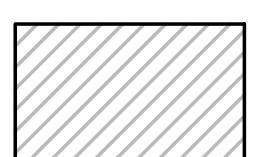
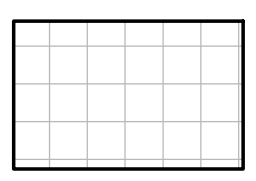
IF IN DOUBT ASK.

Materials not in conformity with relevant British or European Standards/Codes of practice or materials known to be deleterious to health & safety must not be used or specified on this project.

Materials known to contain asbestos contaminated materials (ACM's) in the manufacture or installation process have not been specified and must not be used on this project



Block Location Plan

- **Balcony/external amenity space**
- **Balcony/External Terrace Space**

P2	09.04.14	Cycle and bin storage provisions amended to comply with LHDG standards. Secure by design requirements incorporated. Apartment layouts amended, service and lift core rationalised. Basement and ramp removed.	
Rev	Date	Description	By



PROJECT  
Royal Wharf,  
Development Phase 1

TITLE  
Plot 07 Tenth Floor Plan

DRAWING STATUS  
PLANNING APPROVAL

DRAWN	SA	CHECKED	MB
-------	----	---------	----

SCALE  
As indicated @ A1

DATE  
23/04/14

**wcec**architects

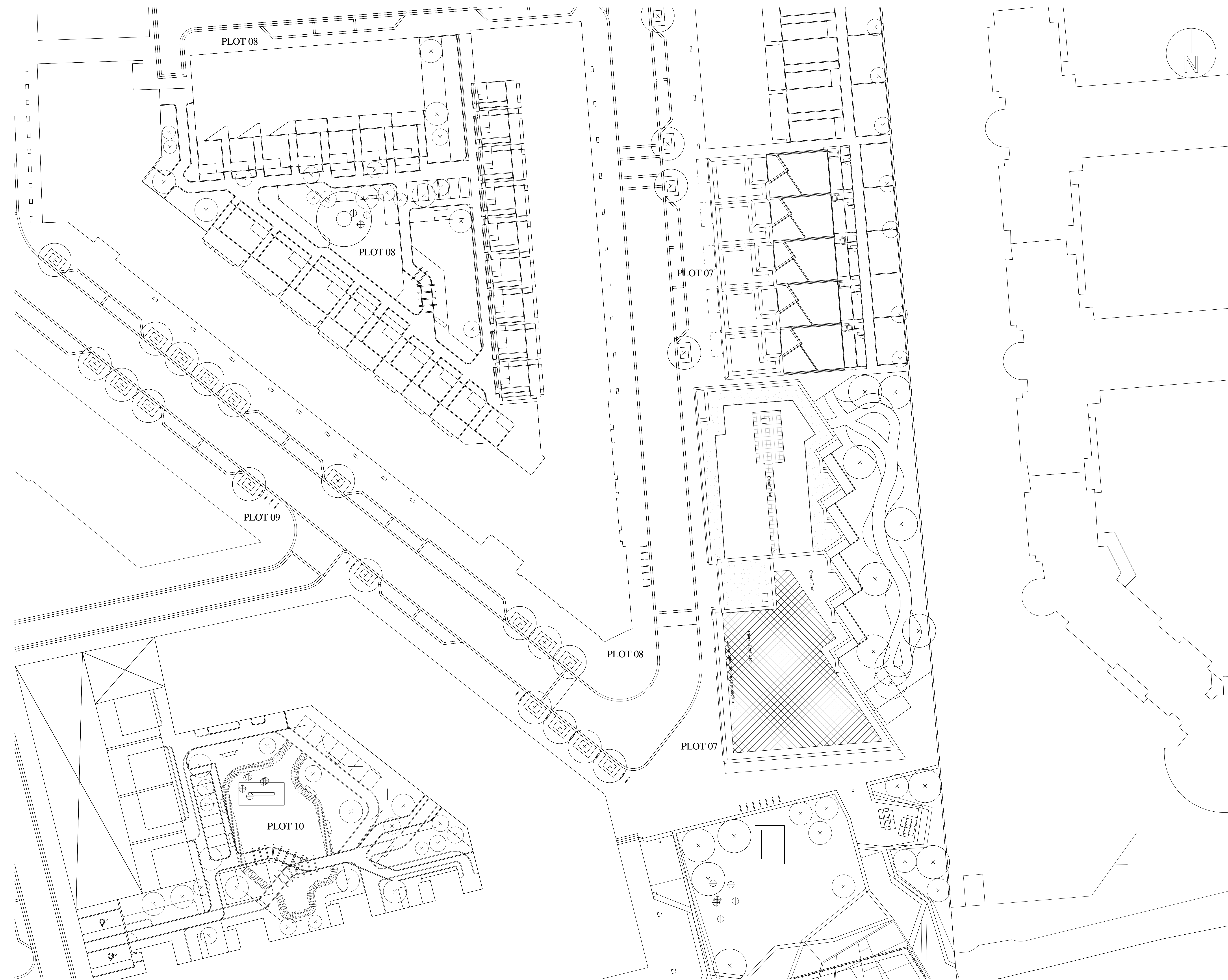
4th Floor, South Building, Staple Inn Buildings,  
High Holborn, London, WC1V 7PZ

Carnwood Court, Carnwood Road,  
Sheepbridge, Chesterfield, S41 9QB

t: 020 3388 0019, e: email@wcec.co.uk, www.wcec.co.uk

JOB NO.	DRAWING NO.	REV
13-500	DPA-07-110	P2





© WCEC ARCHITECTS - DISCLAIMER

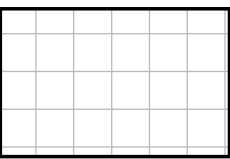
This drawing is copyright and shall not be reproduced or used for any other purpose without the written permission of the Architects. This drawing must be read in conjunction with all other related drawings and documentation. It is the contractors responsibility to ensure full compliance with the Building Regulations. Do not scale from this drawing, use figured dimensions only. It is the contractors responsibility to check and verify all dimensions on site. Any discrepancies to be reported immediately. IF IN DOUBT ASK. Materials not in conformity with relevant British or European Standards/Codes of practice or materials known to be deleterious to health & safety must not be used or specified on this project. Materials known to contain asbestos contaminated materials (ACM's) in the manufacture or installation process have not been specified and must not be used on this project



Block Location Plan



Balcony/external amenity space



Balcony/External Terrace Space

P2	09.04.14	Cycle and bin storage provisions amended to comply with LHDG standards. Secure by design requirements incorporated. Apartment layouts amended. service and lift core rationalised. Basement and ramp removed.	
Rev	Date	Description	By



PROJECT  
Royal Wharf,  
Development Phase 1

TITLE  
Plot 07 Roof Plan

DRAWING STATUS  
PLANNING APPROVAL

DRAWN	MB	CHECKED	MB
-------	----	---------	----

SCALE  
As indicated @ A1

DATE  
10/04/14

**wcec**architects

4th Floor, South Building, Staple Inn Buildings,  
High Holborn, London, WC1V 7PZ

Carnwood Court, Carnwood Road,  
Sheepbridge, Chesterfield, S41 9QB

t: 020 3388 0019, e: email@wcec.co.uk, www.wcec.co.uk

JOB NO. 13-500	DRAWING NO. DPA-07-111	REV P2
-------------------	---------------------------	-----------



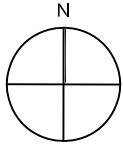
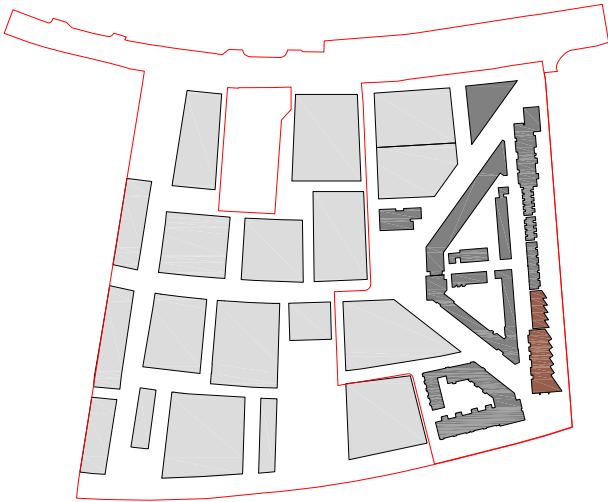


- KEY**
- BROWN ROOF - TO SPECIFICATION  
3846m²
  - GREEN ROOF - TO SPECIFICATION  
1302m²
  - PAVING TYPE 1 600mm x 600mm x 50mm  
ANDOVER CONCRETE PAVING
  - GRAVEL STRIP 600mm WIDTH - TO  
ARCHITECTS DETAIL
  - PRIVATE ROOF TERRACE - TO  
ARCHITECTS DETAIL
  - PRIVATE ROOF TERRACE - TO  
ARCHITECTS DETAIL
  - DEMOUNTABLE KEY CLAMP  
BALUSTRADE SYSTEM

**NOTE**  
1. DEMOUNTABLE KEY CLAMP BALUSTRADE  
REQUIRES A PC PAVING SLAB EVERY 1.2M  
TO HOLD IT IN PLACE.

- GENERAL NOTES**
- Do not scale drawing.
  - All setting out, levels and dimensions to be agreed on site.
  - The dimensions of all materials must be checked on site before being laid out.
  - This drawing must be read with the relevant specification clauses and detail drawings.
  - Order of construction and setting out to be agreed on site.

**PLOT LOCATION KEY**



Project ROYAL WHARF DEVELOPMENT PHASE 1	Drawing Title PLOT 7 LANDSCAPE ROOF PLAN	Revision	Date	Client: <b>Ballymore Group</b> Address: <b>Pointe North</b> 3 Greenwich View Place London E14 9NN	Consultant <b>TOWNSHEND</b> Landscape Architects Unit 3A Zetland House London EC2A 4HJ Telephone: 020 7729 9333 Fax: 020 7729 3300 E-Mail: <a href="mailto:info@townshenda.com">info@townshenda.com</a>	Project No.	Scale	Approved By	Drawing No.	Revision
		P01 - Minor Amendments	150911			465.1	1:250 1:500 @ A3	RA	DPA-07-901	P04
		P02 - Surface Finishes Amendments	240214			Date	Drawing Size	Drawn By		
		P03 - Minor Amendments	070414			MAY 14	A1	MK		
		P04 - Roof Layouts Amended	090514							



This drawing is copyright and shall not be reproduced or used for any other purpose without the written permission of the Architects.  
This drawing must be read in conjunction with all other related drawings and documentation.  
It is the contractors responsibility to ensure full compliance with the Building Regulations.  
Do not scale from this drawing, use figured dimensions only.  
It is the contractors responsibility to check and verify all dimensions on site.  
Any discrepancies to be reported immediately.  
IF IN DOUBT ASK.  
Materials not in conformity with relevant British or European Standards/Codes of practice or materials known to be deleterious to health & safety must not be used or specified on this project.  
Materials known to contain asbestos contaminated materials (ACM's) in the manufacture or installation process have not been specified and must not be used on this project



Block Location Plan

Material Key

1	Facing Brickwork (Type TBC)
2	Concrete Cladding
3a	Aluminium Window System (colour/Finish TBC)
3b	Aluminium Window System with Louvre (colour/Finish TBC)
4	Aluminium Curtain Wall System (Colour/Finish TBC)
5	Timber Weatherboarding
6	Aluminium Rainscreen Panel
7	Zinc Standing Seam Cladding
8	Aluminium Brese Solei
9	Glazed Balustrade
10	Metal Balustrade
11	Aluminium Panel
12	Aluminium Louvre



SOUTH ELEVATION



EAST ELEVATION



EAST ELEVATION

P2	09.04.14	Cycle and bin storage provisions amended to comply with LHDG standards. Secure by design requirements incorporated. Apartment layouts amended, service and lift core rationalised. Basement and ramp removed.	
Rev	Date	Description	By



PROJECT  
Royal Wharf,  
Development Phase 1

TITLE  
Plot 07 South and East Elevations

DRAWING STATUS			
PLANNING APPROVAL			
DRAWN	SA	CHECKED	MB
SCALE	As indicated @ A1		
DATE	25/04/14		

**wcec**architects  
4th Floor, South Building, Staple Inn Buildings,  
High Holborn, London, WC1V 7PZ  
Canwood Court, Canwood Road,  
Sheepbridge, Chesterfield, S41 9QB  
t: 020 3388 0019, e: email@wcec.co.uk, www.wcec.co.uk

JOB NO. 13-500	DRAWING NO. DPA-07-200	REV P2
-------------------	---------------------------	-----------



This drawing is copyright and shall not be reproduced or used for any other purpose without the written permission of the Architects.  
This drawing must be read in conjunction with all other related drawings and documentation.  
It is the contractors responsibility to ensure full compliance with the Building Regulations.  
Do not scale from this drawing, use figured dimensions only.  
It is the contractors responsibility to check and verify all dimensions on site.  
Any discrepancies to be reported immediately.  
IF IN DOUBT ASK.  
Materials not in conformity with relevant British or European Standards/Codes of practice or materials known to be deleterious to health & safety must not be used or specified on this project.  
Materials known to contain asbestos contaminated materials (ACM's) in the manufacture or installation process have not been specified and must not be used on this project



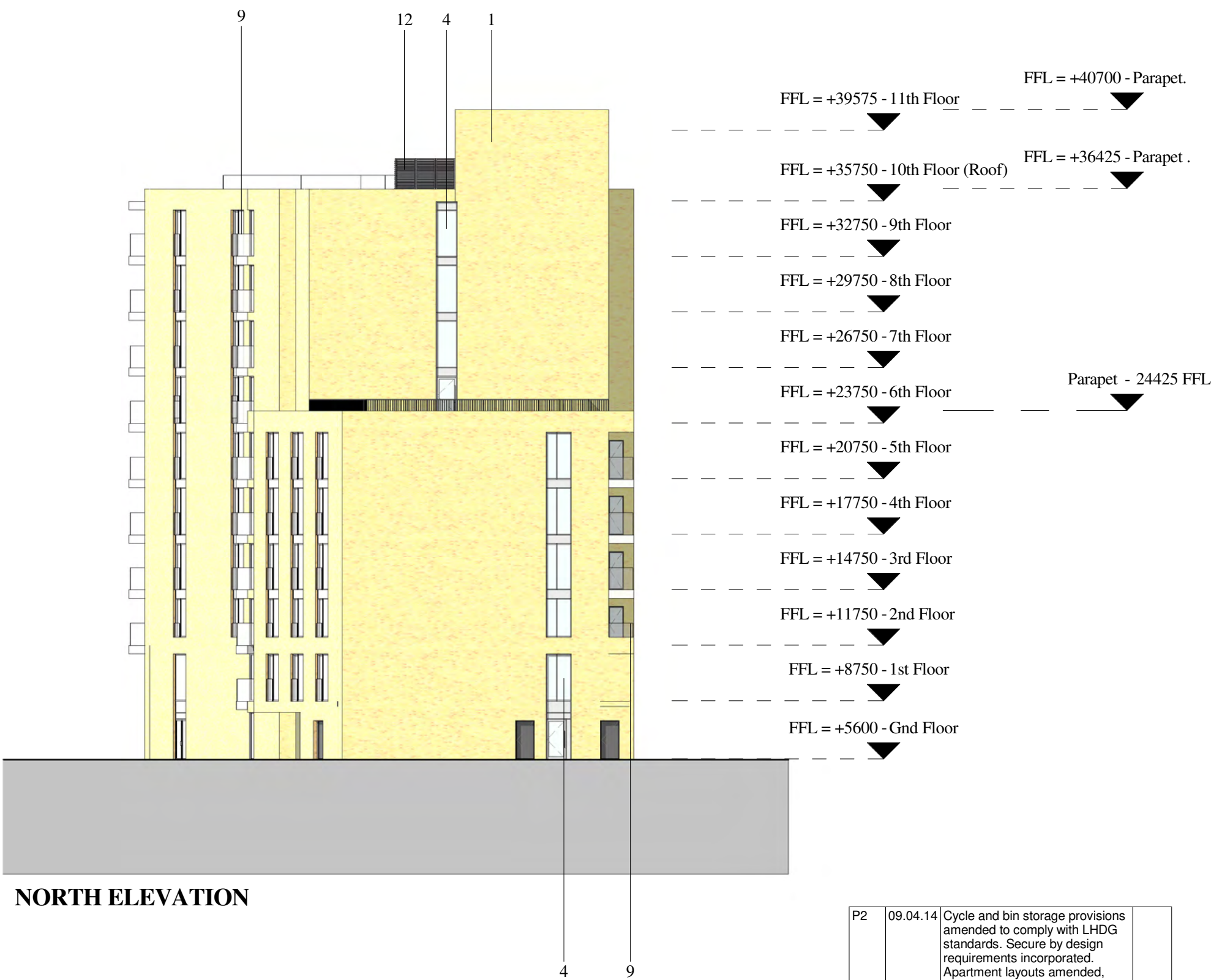
Block Location Plan

Material Key

- |    |   |
|----|---|
| 1  | Facing Brickwork (Type TBC)                             |
| 2  | Concrete Cladding                                       |
| 3a | Aluminium Window System (colour/Finish TBC)             |
| 3b | Aluminium Window System with Louvre (colour/Finish TBC) |
| 4  | Aluminium Curtain Wall System (Colour/Finish TBC)       |
| 5  | Timber Weatherboarding                                  |
| 6  | Aluminium Rainscreen Panel                              |
| 7  | Zinc Standing Seam Cladding                             |
| 8  | Aluminium Brese Solei                                   |
| 9  | Glazed Balustrade                                       |
| 10 | Metal Balustrade  |
| 11 | Aluminium Panel   |
| 12 | Aluminium Louvre  |



WEST ELEVATION



NORTH ELEVATION

P2	09.04.14	Cycle and bin storage provisions amended to comply with LHDG standards. Secure by design requirements incorporated. Apartment layouts amended, service and lift core rationalised. Basement and ramp removed.	
Rev	Date	Description	By



PROJECT  
Royal Wharf,  
Development Phase 1

TITLE  
Plot 07 West and North Elevation

DRAWING STATUS

PLANNING APPROVAL

DRAWN	SA	CHECKED	MB
SCALE	As indicated @ A1		
DATE	25/04/14		

**wcec**architects

4th Floor, South Building, Staple Inn Buildings,  
High Holborn, London, WC1V 7PZ

Canwood Court, Canwood Road,  
Sheepbridge, Chesterfield, S41 9QB

t: 020 3388 0019, e: email@wcec.co.uk, www.wcec.co.uk

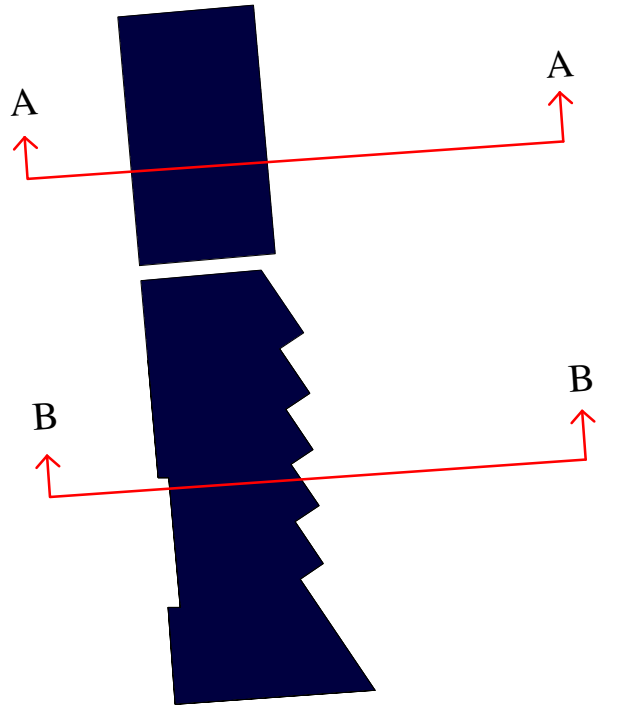
JOB NO. 13-500	DRAWING NO. DPA-07-201	REV P2
-------------------	---------------------------	-----------



This drawing is copyright and shall not be reproduced or used for any other purpose without the written permission of the Architects.  
This drawing must be read in conjunction with all other related drawings and documentation.  
It is the contractors responsibility to ensure full compliance with the Building Regulations.  
Do not scale from this drawing, use figured dimensions only.  
It is the contractors responsibility to check and verify all dimensions on site.  
Any discrepancies to be reported immediately.  
IF IN DOUBT ASK.  
Materials not in conformity with relevant British or European Standards/Codes of practice or materials known to be deleterious to health & safety must not be used or specified on this project.  
Materials known to contain asbestos contaminated materials (ACM's) in the manufacture or installation process have not been specified and must not be used on this project



Block Location Plan



P2	09.04.14	Cycle and bin storage provisions amended to comply with LHDG standards. Secure by design requirements incorporated. Apartment layouts amended, service and lift core rationalised. Basement and ramp removed.	
Rev	Date	Description	By



PROJECT  
Royal Wharf,  
Development Phase 1

TITLE  
Plot 07 Section AA and BB

DRAWING STATUS			
PLANNING APPROVAL			
DRAWN	SA	CHECKED	MB
SCALE	As indicated @ A1		
DATE	25/04/14		

**WCEC**architects

4th Floor, South Building, Staple Inn Buildings,  
High Holborn, London, WC1V 7PZ

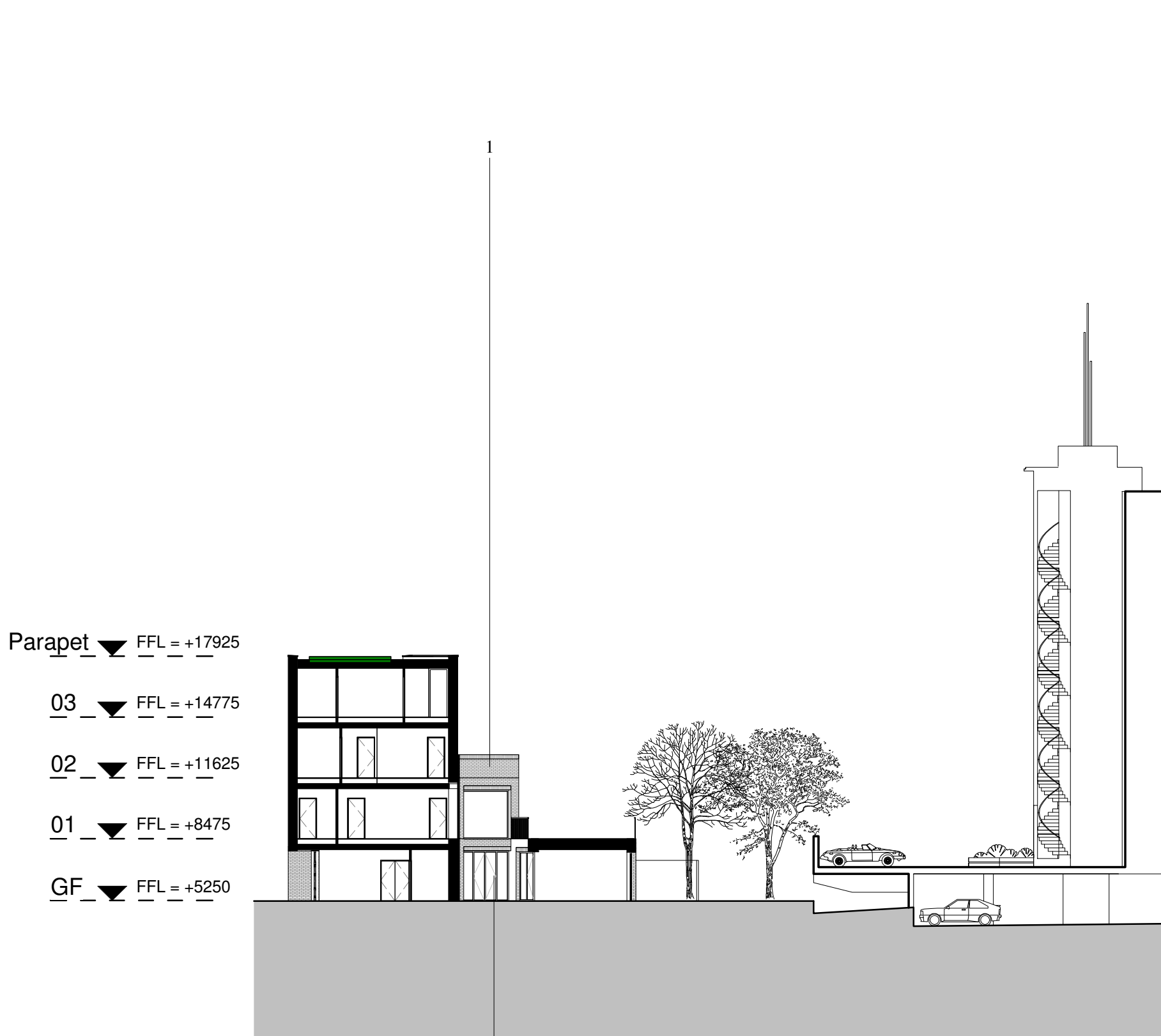
Carnwood Court, Carnwood Road,  
Sheepbridge, Chesterfield, S41 9QB

t: 020 3388 0019, e: email@wcec.co.uk, www.wcec.co.uk

JOB NO.	DRAWING NO.	REV
13-500	DPA-07-300	P2

Material Key

1	Facing Brickwork (Type TBC)
2	Concrete Cladding
3a	Aluminium Window System (colour/Finish TBC)
3b	Aluminium Window System with Louvre (colour/Finish TBC)
4	Aluminium Curtain Wall System (Colour/Finish TBC)
5	Timber Weatherboarding
6	Aluminium Rainscreen Panel
7	Zinc Standing Seam Cladding
8	Aluminium Brese Solei
9	Glazed Balustrade
10	Metal Balustrade
11	Aluminium Panel
12	Aluminium Louvre



SECTION AA



SECTION BB





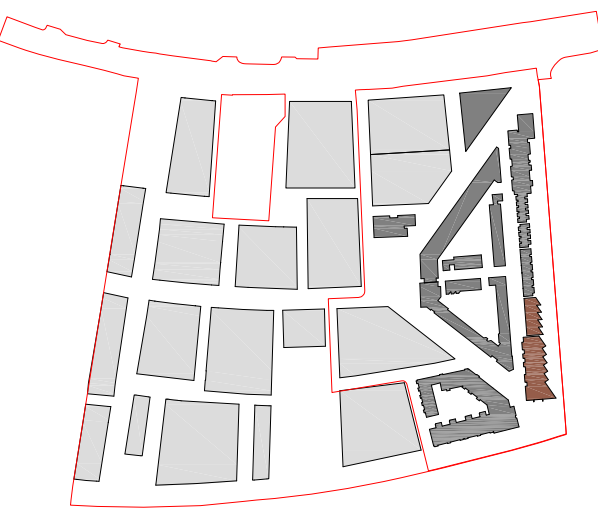
KEY

- PAVING TYPE 5 ANDOVER CONCRETE PAVING
- PAVING TYPE 7 ANDOVER CONCRETE PAVING
- CEDEC SELF BINDING GRAVEL
- CHILDRENS PLAY ELEMENT
- LAWN
- SHRUB AND HERBACEOUS PLANTING
- KITCHEN GARDEN

- PROPOSED TREE PLANTING
- DETAILED AREA
- OUTLINE AREA
- PROPOSED LEVEL
- EXISTING LEVEL

- GENERAL NOTES
- Do not scale drawing.
  - All setting out, levels and dimensions to be agreed on site.
  - The dimensions of all materials must be checked on site before being laid out.
  - This drawing must be read with the relevant specification clauses and detail drawings.
  - Order of construction and setting out to be agreed on site.

PLOT LOCATION KEY



Project ROYAL WHARF DEVELOPMENT PHASE 1	Drawing Title PLOT 7 LANDSCAPE FINISHES PLAN	Revision P01 - Minor Amendments	Date 15/09/11	Client: <b>Ballymore Group</b> Address: <b>Pointe North</b> 3 Greenwich View Place London E14 9NN	Consultant <b>TOWNSHEND</b> Landscape Architects Unit 3A Zetland House London EC2A 4HJ Telephone: 020 7729 9333 Fax: 020 7729 3300 E-Mail: <a href="mailto:tda@townshenda.com">tda@townshenda.com</a>	Project No. 465.1	Scale 1:250 1:500 @ A3	Approved By MA	Drawing No. DPA-07-900	Revision P03
		P02 - Surface Finishes Amendments	24/02/14			Date SEP 2011	Drawing Size A1	Drawn By MIC		