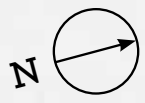




ROYAL WHARF

LONDON

TOWNHOUSES



LATITUDE HOUSE

MARITIME BUILDING

FLAGSHIP HOUSE

ADMIRALTY BUILDING

ANCHOR BUILDING

SOVEREIGN PLACE

THAMES STREET

RIVERSIDE WALK

RIVER THAMES

LEGEND

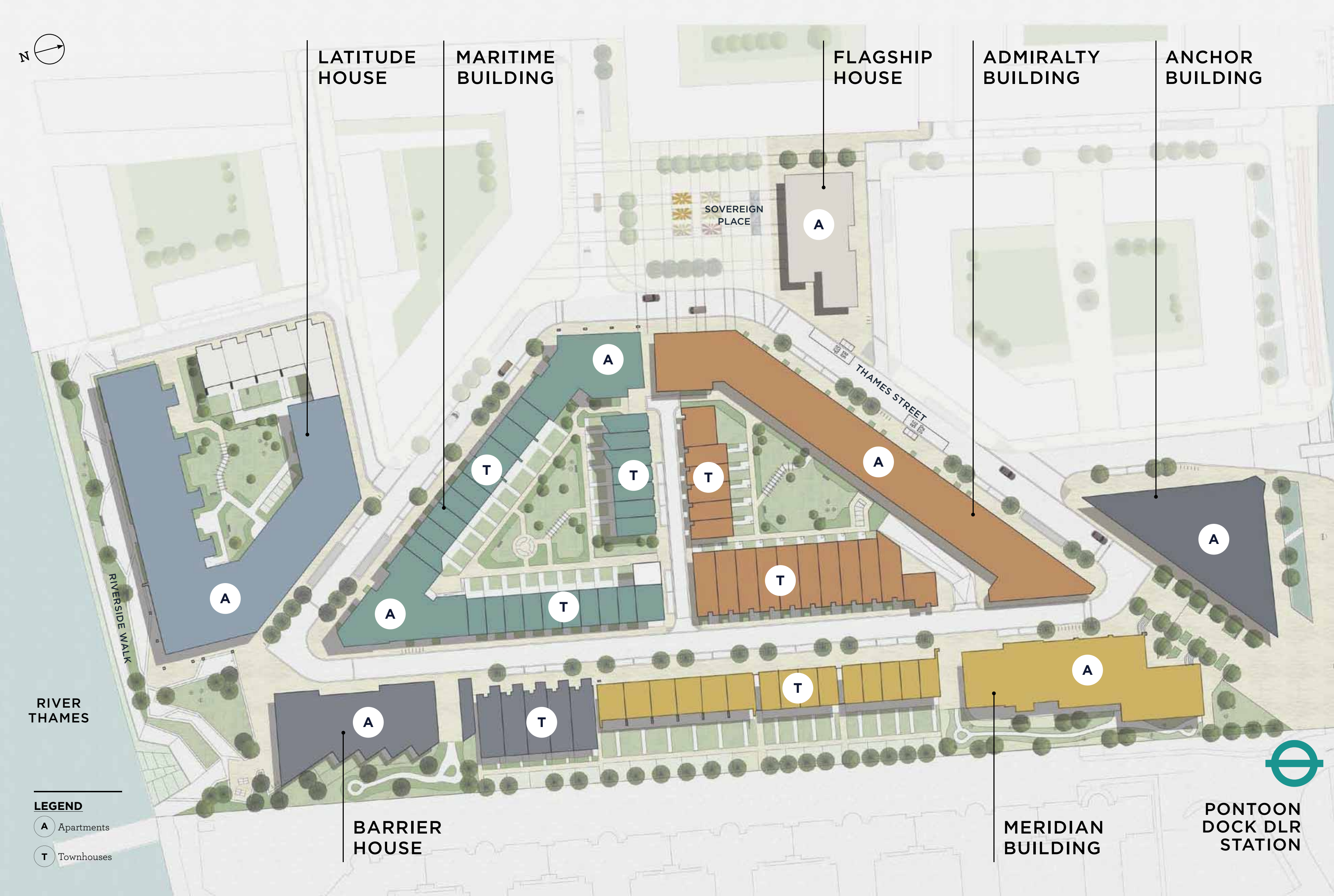
A Apartments

T Townhouses

BARRIER HOUSE

MERIDIAN BUILDING

PONTOON DOCK DLR STATION





- 06
H.15
- 06
H.14
- 06
H.13
- 06
H.12
- 06
H.11
- 06
H.10
- 06
H.09
- 06
H.08
- 06
H.07
- 06
H.06
- 06
H.04
- 06
H.02
- 06
H.05
- 06
H.03
- 06
H.01



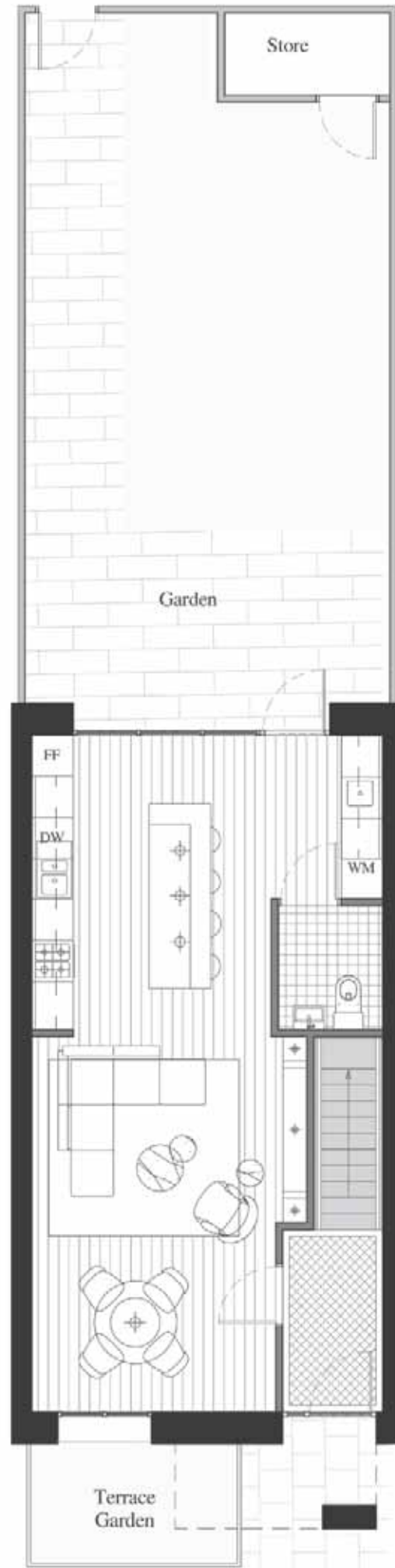
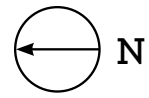
ROYAL WHARF
LONDON

MERIDIAN BUILDING
TOWNHOUSES

NOTES



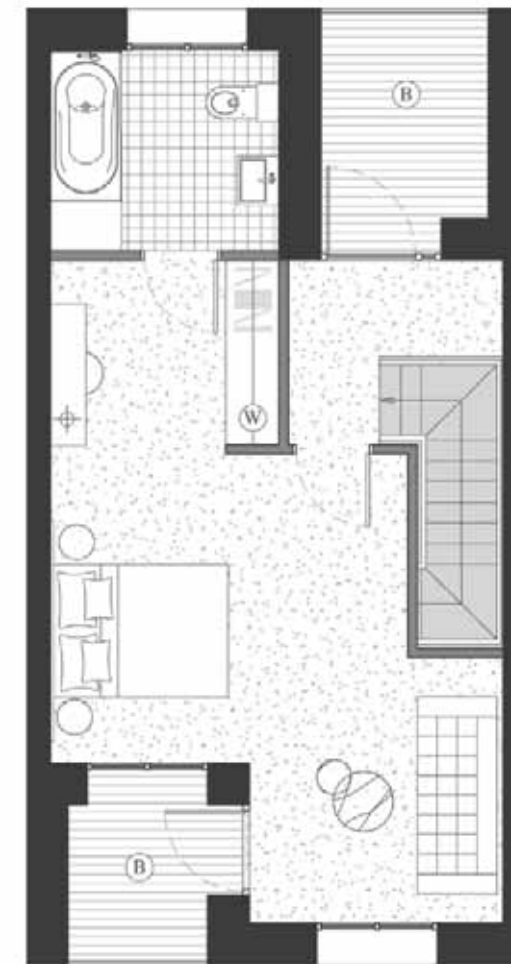
Disclaimer
This brochure and the information contained in it does not form part of any contract, and while reasonable effort has been made to ensure accuracy, this cannot be guaranteed and no representation or warranty is made in that regard. Apartment designs and layouts are indicative only and may change. The specification of the apartments is the anticipated specification as at the date this brochure was prepared, but may be subject to change in accordance with permitted variances under the apartment sale contracts. Dimensions shown in any text or plan are approximate sizes only and actual sizes may be different once constructed (although it is not anticipated that any apartments will be reduced by more than 5% in size). Computer generated images and photo's are indicative only. All sales remain subject to contract. All information regarding prospective commercial or retail tenants represents current intention only, and the final identity of the tenants may change. Furniture shown in Computer Generated Images and photo's is not included in sales. Royal Wharf is a marketing name only and will not necessarily form part of the approved postal address. Neither the agents nor any person in their employ has any authority to make or give any representation warranty or guarantee (whether written or oral) in respect of or in relation to the development (or any parts thereof).
© 2014 Royal Wharf
www.royalwharf.com



GROUND FLOOR



FIRST FLOOR



SECOND FLOOR



ROYAL WHARF

LONDON

MERIDIAN BUILDING

TOWNHOUSES

01-09

3 BEDROOM

Internal area: 140.6 sq.m / 1513 sq.ft	First floor balcony: 4.0 sq.m / 43 sq.ft
Kitchen area: 5095 mm x 4300 mm	Second floor balcony front: 3.7 sq.m / 39 sq.ft
Dining area: 3420 mm x 2750 mm	Second floor balcony rear: 3.5 sq.m / 39 sq.ft
Living area: 3995 mm x 2700 mm	Garden: 53.1 sq.m / 572 sq.ft
Bedroom 1: 5095 mm x 3345 mm	
Bedroom 2: 5095 mm x 3000 mm	
Bedroom 3: 5095 mm x 5300 mm	

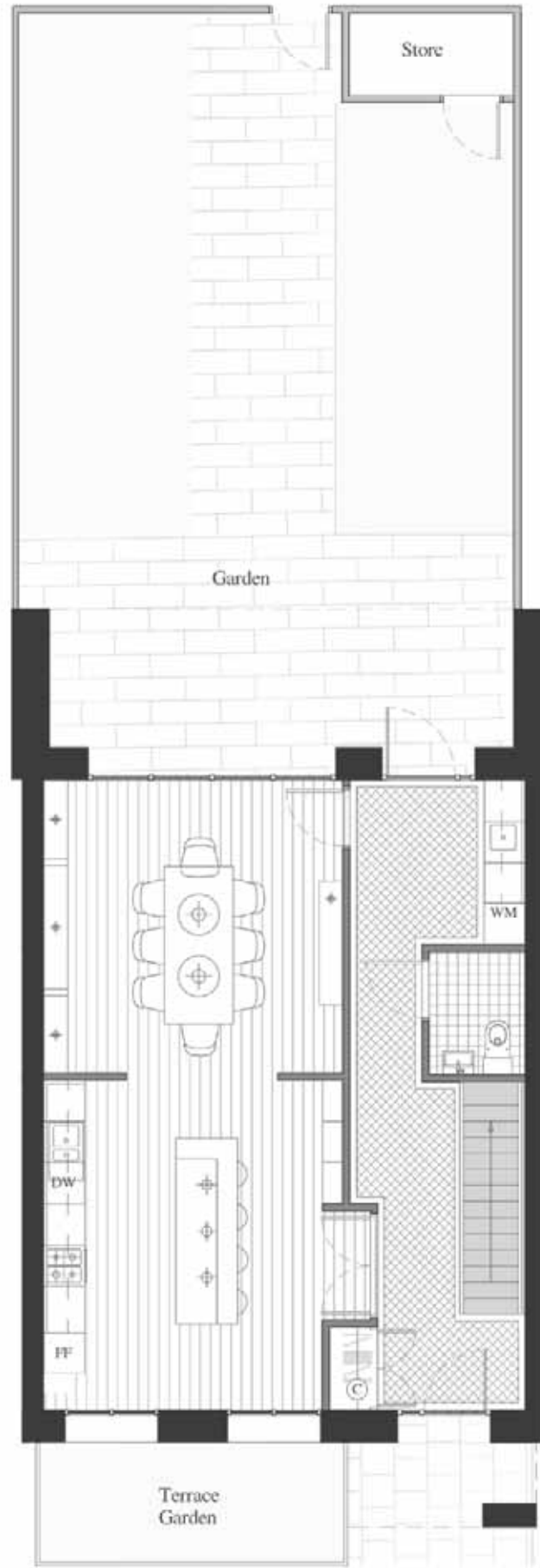
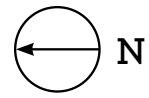
LEGEND

- C: Cupboard
- W: Wardrobe
- FF: Fridge Freezer
- WM: Washer/Dryer
- B: Balcony



Not to scale

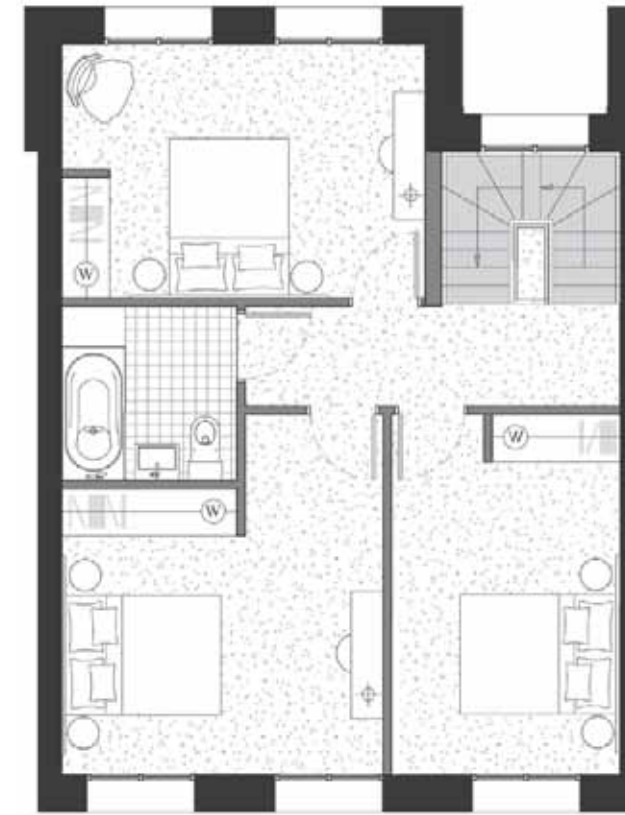
Disclaimer
This brochure and the information contained in it does not form part of any contract, and while reasonable effort has been made to ensure accuracy, this cannot be guaranteed and no representation or warranty is made in that regard. Apartment designs and layouts are indicative only and may change. The specification of the apartments is the anticipated specification as at the date this brochure was prepared, but may be subject to change in accordance with permitted variances under the apartment sale contracts. Dimensions shown in any text or plan are approximate sizes only and actual sizes may be different once constructed (although it is not anticipated that any apartments will be reduced by more than 5% in size). Computer generated images and photo's are indicative only. All sales remain subject to contract. All information regarding prospective commercial or retail tenants represents current intention only, and the final identity of the tenants may change. Furniture shown in Computer Generated Images and photo's is not included in sales. Royal Wharf is a marketing name only and will not necessarily form part of the approved postal address. Neither the agents nor any person in their employ has any authority to make or give any representation warranty or guarantee (whether written or oral) in respect of or in relation to the development (or any parts thereof).



GROUND FLOOR



FIRST FLOOR



SECOND FLOOR



THIRD FLOOR



ROYAL WHARF
LONDON

MERIDIAN BUILDING

TOWNHOUSES

10-15

4 BEDROOM

Internal area: 224.5 sq.m / 2416 sq.ft	Bedroom 4: 2760 mm x 4530 mm
Kitchen area: 4350 mm x 4800 mm	First floor balcony front: 17.2 sq.m / 185 sq.ft
Dining area: 4350 mm x 4270 mm	First floor balcony rear: 4.0 sq.m / 43 sq.ft
Living area: 5980 mm x 9170 mm	Third floor terrace: 20.8 sq.m / 224 sq.ft
Bedroom 1: 4900 mm x 4600 mm	Garden: 81.0 sq.m / 872 sq.ft
Bedroom 2: 4140 mm x 3600 mm	
Bedroom 3: 4560 mm x 3180 mm	

LEGEND

- C: Cupboard
- W: Wardrobe
- FF: Fridge Freezer
- WM: Washer/Dryer
- B: Balcony



Not to scale

Disclaimer
This brochure and the information contained in it does not form part of any contract, and while reasonable effort has been made to ensure accuracy, this cannot be guaranteed and no representation or warranty is made in that regard. Apartment designs and layouts are indicative only and may change. The specification of the apartments is the anticipated specification as at the date this brochure was prepared, but may be subject to change in accordance with permitted variances under the apartment sale contracts. Dimensions shown in any text or plan are approximate sizes only and actual sizes may be different once constructed (although it is not anticipated that any apartments will be reduced by more than 5% in size). Computer generated images and photo's are indicative only. All sales remain subject to contract. All information regarding prospective commercial or retail tenants represents current intention only, and the final identity of the tenants may change. Furniture shown in Computer Generated Images and photo's is not included in sales. Royal Wharf is a marketing name only and will not necessarily form part of the approved postal address. Neither the agents nor any person in their employ has any authority to make or give any representation warranty or guarantee (whether written or oral) in respect of or in relation to the development (or any parts thereof).



ROYAL WHARF
LONDON

BARRIER HOUSE
TOWNHOUSES

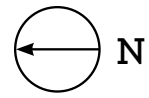
NOTES



Disclaimer
This brochure and the information contained in it does not form part of any contract, and while reasonable effort has been made to ensure accuracy, this cannot be guaranteed and no representation or warranty is made in that regard. Apartment designs and layouts are indicative only and may change. The specification of the apartments is the anticipated specification as at the date this brochure was prepared, but may be subject to change in accordance with permitted variances under the apartment sale contracts. Dimensions shown in any text or plan are approximate sizes only and actual sizes may be different once constructed (although it is not anticipated that any apartments will be reduced by more than 5% in size). Computer generated images and photo's are indicative only. All sales remain subject to contract. All information regarding prospective commercial or retail tenants represents current intention only, and the final identity of the tenants may change. Furniture shown in Computer Generated Images and photo's is not included in sales. Royal Wharf is a marketing name only and will not necessarily form part of the approved postal address. Neither the agents nor any person in their employ has any authority to make or give any representation warranty or guarantee (whether written or oral) in respect of or in relation to the development (or any parts thereof).



- 07 H.05
- 07 H.04
- 07 H.03
- 07 H.02
- 07 H.01



ROYAL WHARF
LONDON

BARRIER HOUSE

TOWNHOUSES

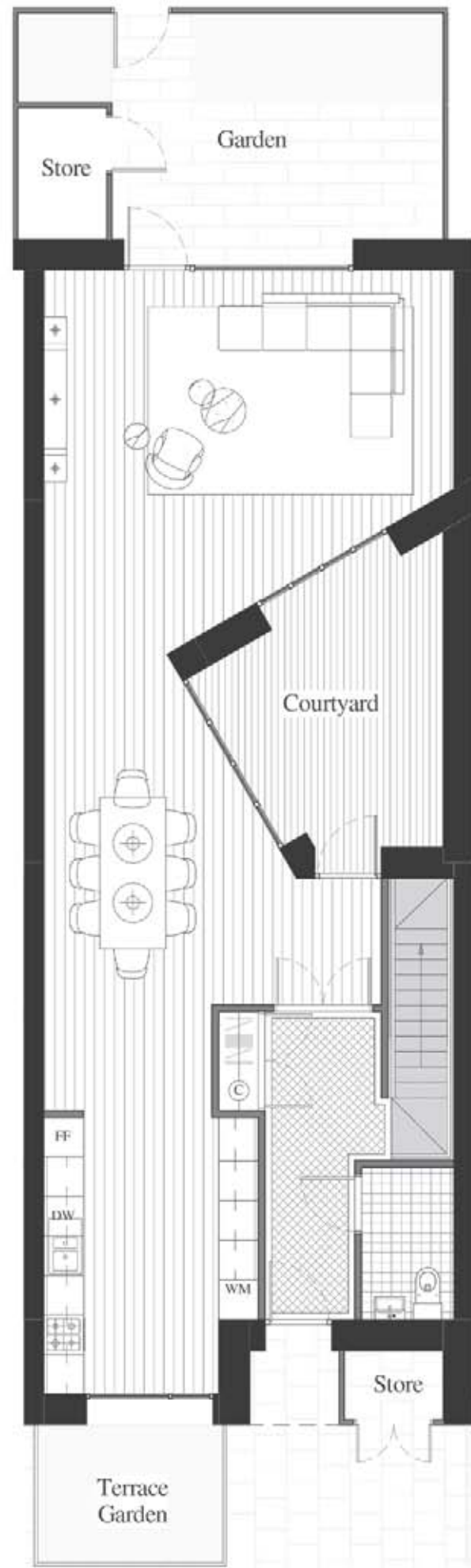
01-05

4 BEDROOM

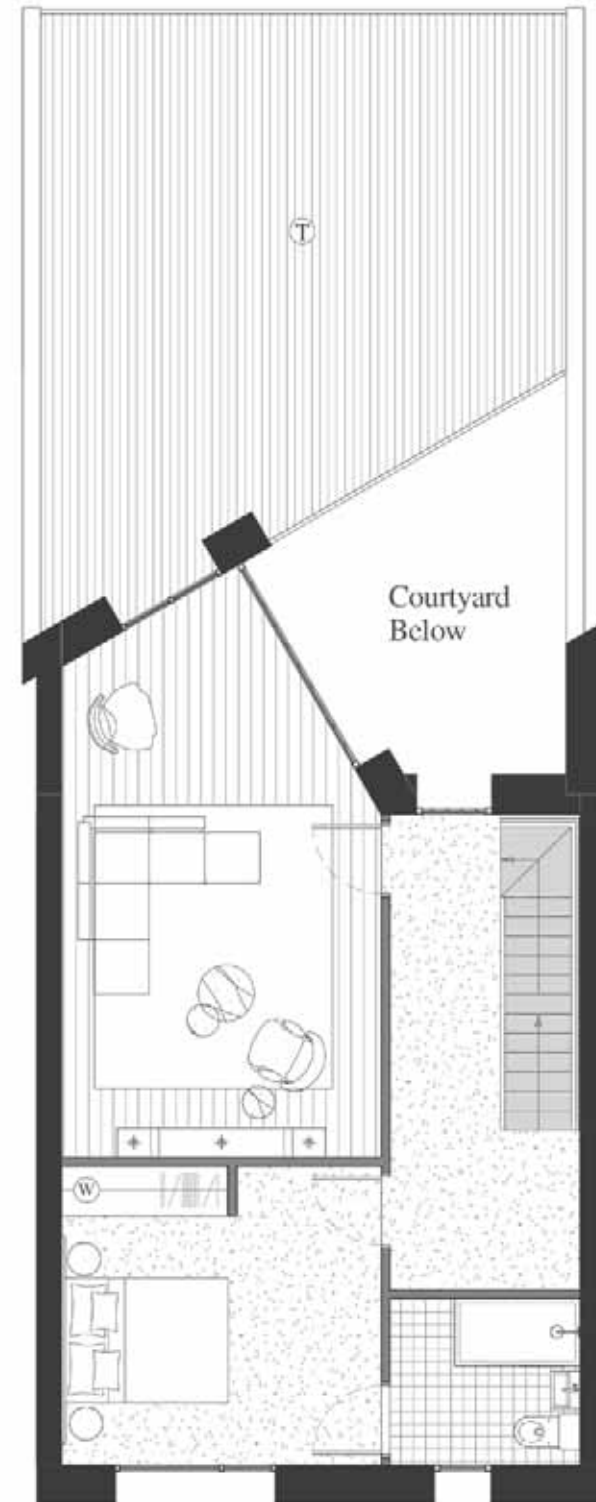
Internal area: 229.6 sq.m / 2471 sq.ft	Bedroom 2: 3840 mm x 4125 mm
Kitchen area: 4230 mm x 3250 mm	Bedroom 3: 3840 mm x 3600 mm
Dining area: 6920 mm x 3575 mm	Bedroom 4: 5465 mm x 6230 mm
Living area - ground floor: 6220 mm x 5830 mm	Terrace/courtyard: 47.5 sq.m / 511 sq.ft
Living area - first floor: 7140 mm x 3840 mm	Second floor balcony: 8.5 sq.m / 91 sq.ft
Bedroom 1: 3600 mm x 3830 mm	Third floor balcony: 8.5 sq.m / 91 sq.ft
	Garden: 27.8 sq.m / 299 sq.ft

LEGEND

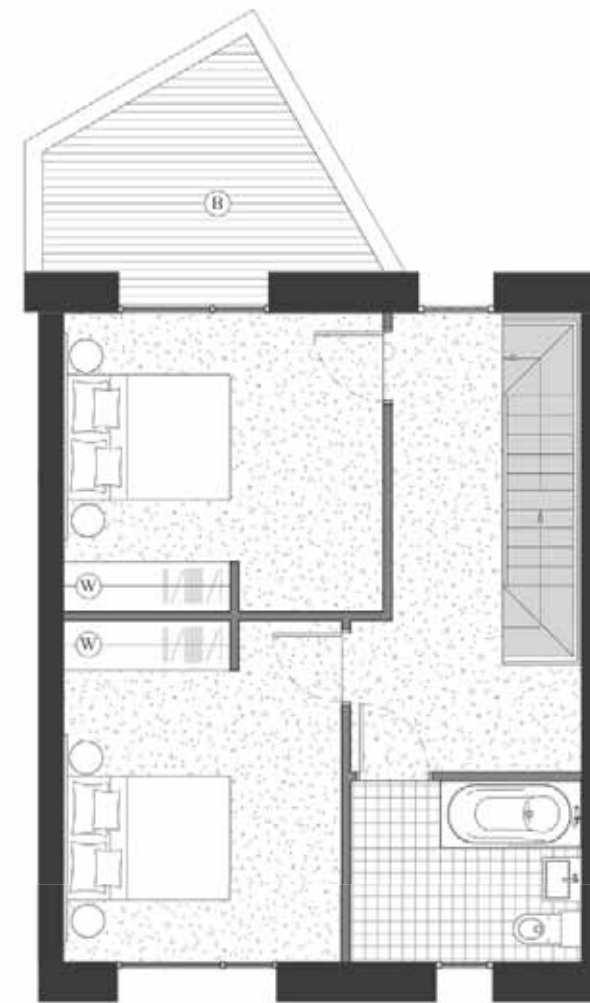
- C: Cupboard
- W: Wardrobe
- FF: Fridge Freezer
- WM: Washer/Dryer
- B: Balcony



GROUND FLOOR



FIRST FLOOR



SECOND FLOOR



THIRD FLOOR



Not to scale

Disclaimer
This brochure and the information contained in it does not form part of any contract, and while reasonable effort has been made to ensure accuracy, this cannot be guaranteed and no representation or warranty is made in that regard. Apartment designs and layouts are indicative only and may change. The specification of the apartments is the anticipated specification as at the date this brochure was prepared, but may be subject to change in accordance with permitted variances under the apartment sale contracts. Dimensions shown in any text or plan are approximate sizes only and actual sizes may be different once constructed (although it is not anticipated that any apartments will be reduced by more than 5% in size). Computer generated images and photo's are indicative only. All sales remain subject to contract. All information regarding prospective commercial or retail tenants represents current intention only, and the final identity of the tenants may change. Furniture shown in Computer Generated Images and photo's is not included in sales. Royal Wharf is a marketing name only and will not necessarily form part of the approved postal address. Neither the agents nor any person in their employ has any authority to make or give any representation warranty or guarantee (whether written or oral) in respect of or in relation to the development (or any parts thereof).



ROYAL WHARF
LONDON

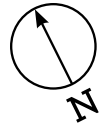
MARITIME BUILDING
TOWNHOUSES



NOTES



Disclaimer
This brochure and the information contained in it does not form part of any contract, and while reasonable effort has been made to ensure accuracy, this cannot be guaranteed and no representation or warranty is made in that regard. Apartment designs and layouts are indicative only and may change. The specification of the apartments is the anticipated specification as at the date this brochure was prepared, but may be subject to change in accordance with permitted variances under the apartment sale contracts. Dimensions shown in any text or plan are approximate sizes only and actual sizes may be different once constructed (although it is not anticipated that any apartments will be reduced by more than 5% in size). Computer generated images and photo's are indicative only. All sales remain subject to contract. All information regarding prospective commercial or retail tenants represents current intention only, and the final identity of the tenants may change. Furniture shown in Computer Generated Images and photo's is not included in sales. Royal Wharf is a marketing name only and will not necessarily form part of the approved postal address. Neither the agents nor any person in their employ has any authority to make or give any representation warranty or guarantee (whether written or oral) in respect of or in relation to the development (or any parts thereof).



ROYAL WHARF LONDON

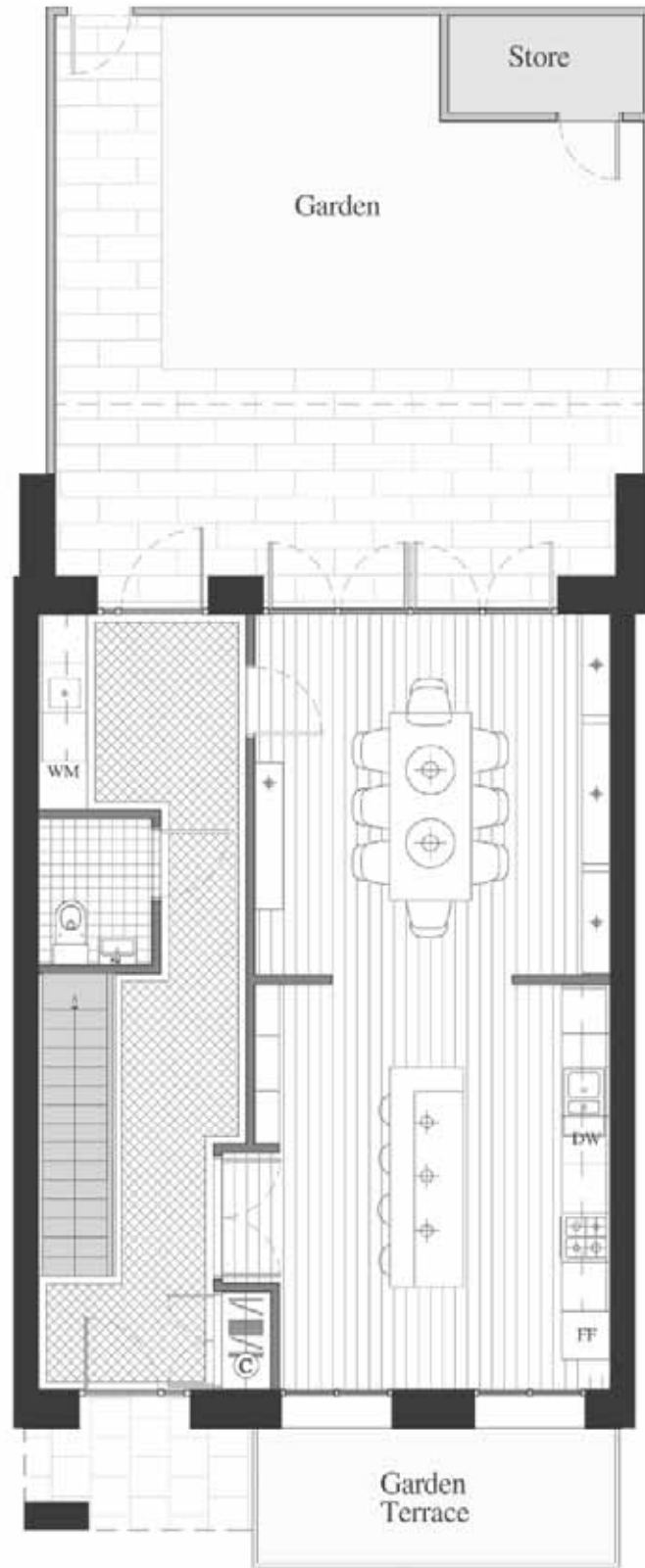
MARITIME BUILDING

TOWNHOUSES

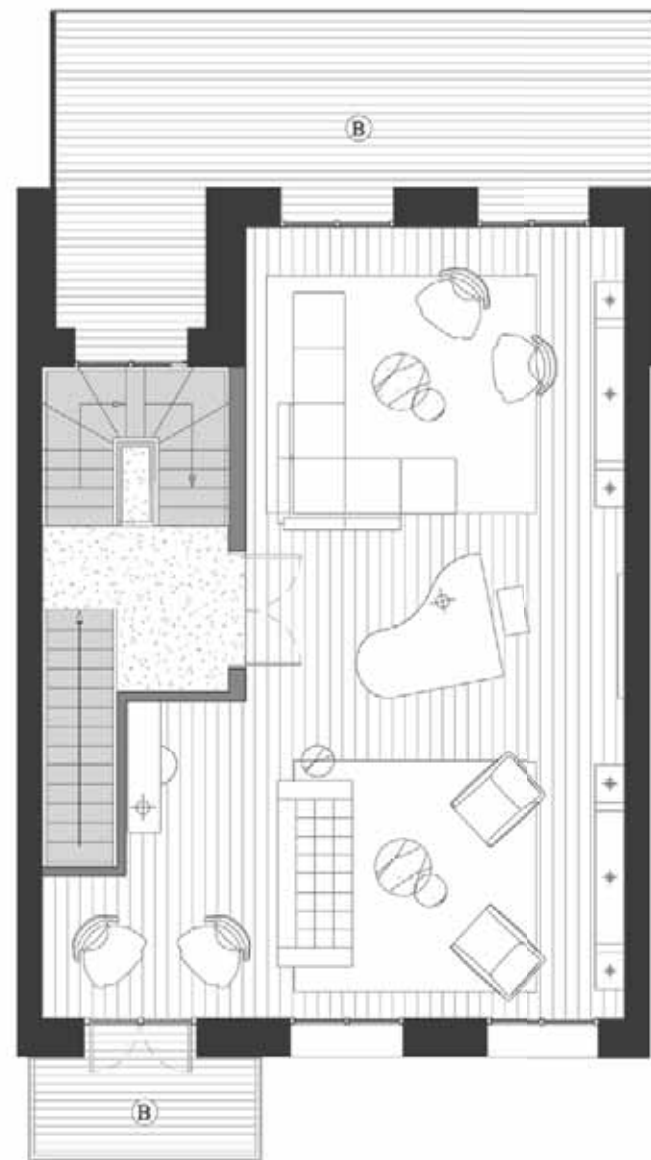
01-03

4 BEDROOM

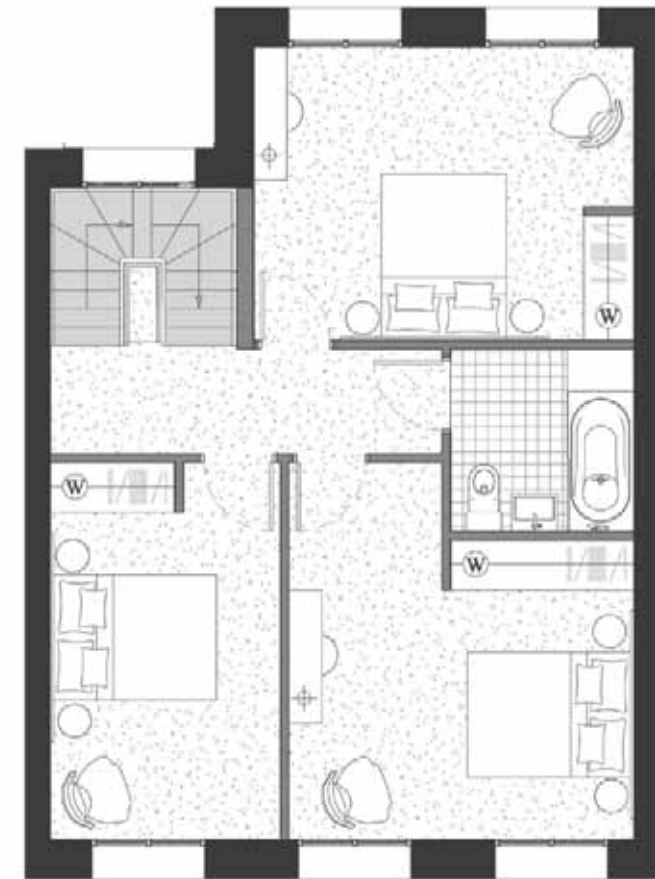
Internal area: 230.1 sq.m / 2477 sq.ft	Bedroom 4: 4900 mm x 4600 mm
Kitchen area: 4820 mm x 4500 mm	First floor balcony - front: 4.0 sq.m / 43 sq.ft
Dining area: 4610 mm x 4350 mm	First floor balcony - rear: 20.5 sq.m / 221 sq.ft
Living area: 9510 mm x 4590 mm	Third floor terrace: 22.7 sq.m / 244 sq.ft
Bedroom 1: 4560 mm x 3600 mm	Garden: 57.2 sq.m / 616 sq.ft
Bedroom 2: 4140 mm x 3600 mm	
Bedroom 3: 4560 mm x 2760 mm	



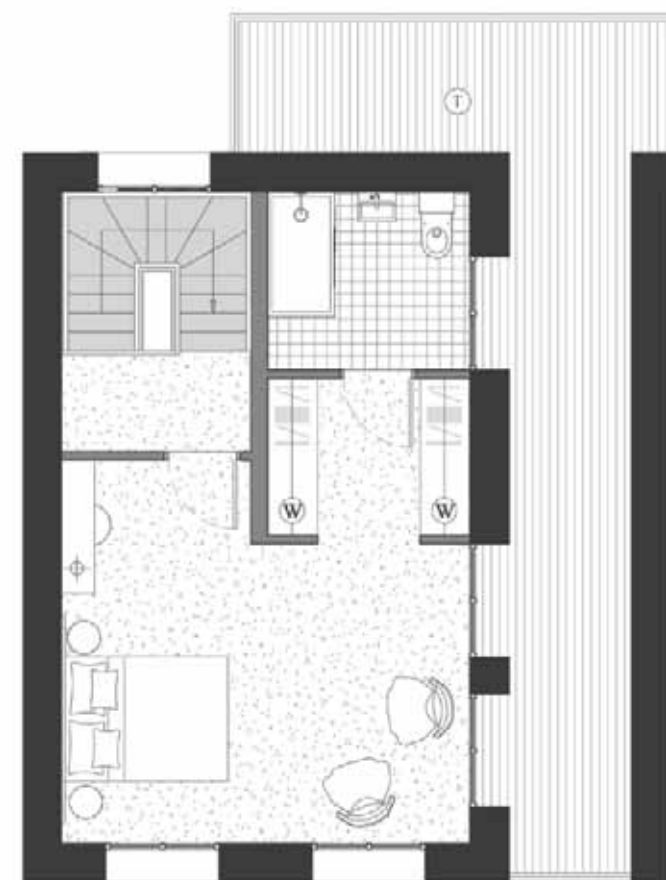
GROUND FLOOR



FIRST FLOOR



SECOND FLOOR



THIRD FLOOR

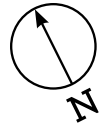
LEGEND

- C: Cupboard
- W: Wardrobe
- FF: Fridge Freezer
- WM: Washer/Dryer
- B: Balcony



Not to scale

Disclaimer
This brochure and the information contained in it does not form part of any contract, and while reasonable effort has been made to ensure accuracy, this cannot be guaranteed and no representation or warranty is made in that regard. Apartment designs and layouts are indicative only and may change. The specification of the apartments is the anticipated specification as at the date this brochure was prepared, but may be subject to change in accordance with permitted variances under the apartment sale contracts. Dimensions shown in any text or plan are approximate sizes only and actual sizes may be different once constructed (although it is not anticipated that any apartments will be reduced by more than 5% in size). Computer generated images and photo's are indicative only. All sales remain subject to contract. All information regarding prospective commercial or retail tenants represents current intention only, and the final identity of the tenants may change. Furniture shown in Computer Generated Images and photo's is not included in sales. Royal Wharf is a marketing name only and will not necessarily form part of the approved postal address. Neither the agents nor any person in their employ has any authority to make or give any representation warranty or guarantee (whether written or oral) in respect of or in relation to the development (or any parts thereof).



ROYAL WHARF

LONDON

MARITIME BUILDING

TOWNHOUSES

04-08

3 BEDROOM

Internal area: 170.7 sq.m / 1837 sq.ft	First floor balcony: 4.1 sq.m / 44 sq.ft
Kitchen area: 4300 mm x 3420 mm	Third floor balcony - front: 3.6 sq.m / 38 sq.ft
Dining area: 5110 mm x 3420 mm	Third floor terrace: 20.5 sq.m / 221 sq.ft
Living area: 9510 mm x 2990 mm	Garden: 41.3 sq.m / 445 sq.ft
Bedroom 1: 5095 mm x 3610 mm	
Bedroom 2: 2990 mm x 3655 mm	
Bedroom 3: 3990 mm x 3700 mm	



GROUND FLOOR



FIRST FLOOR



SECOND FLOOR



THIRD FLOOR

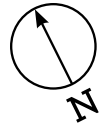
LEGEND

- C: Cupboard
- W: Wardrobe
- FF: Fridge Freezer
- WM: Washer/Dryer
- B: Balcony



Not to scale

Disclaimer
This brochure and the information contained in it does not form part of any contract, and while reasonable effort has been made to ensure accuracy, this cannot be guaranteed and no representation or warranty is made in that regard. Apartment designs and layouts are indicative only and may change. The specification of the apartments is the anticipated specification as at the date this brochure was prepared, but may be subject to change in accordance with permitted variances under the apartment sale contracts. Dimensions shown in any text or plan are approximate sizes only and actual sizes may be different once constructed (although it is not anticipated that any apartments will be reduced by more than 5% in size). Computer generated images and photo's are indicative only. All sales remain subject to contract. All information regarding prospective commercial or retail tenants represents current intention only, and the final identity of the tenants may change. Furniture shown in Computer Generated Images and photo's is not included in sales. Royal Wharf is a marketing name only and will not necessarily form part of the approved postal address. Neither the agents nor any person in their employ has any authority to make or give any representation warranty or guarantee (whether written or oral) in respect of or in relation to the development (or any parts thereof).



ROYAL WHARF

LONDON

MARITIME BUILDING

TOWNHOUSES

09

3 BEDROOM

Internal area: 186.6 sq.m / 2009 sq.ft	First floor balcony: 4.1 sq.m / 44 sq.ft
Kitchen area: 6880 mm x 3470 mm	Third floor balcony: 3.6 sq.m / 37 sq.ft
Dining area: 5110 mm x 3420 mm	Third floor terrace: 25.3 sq.m / 272 sq.ft
Living area: 11990 mm x 5095 mm	Garden: 35.1 sq.m / 378 sq.ft
Bedroom 1: 5095 mm x 4480 mm	
Bedroom 2: 3665 mm x 2990 mm	
Bedroom 3: 3990 mm x 3700 mm	

LEGEND

- C: Cupboard
- W: Wardrobe
- FF: Fridge Freezer
- WM: Washer/Dryer
- B: Balcony



GROUND FLOOR



FIRST FLOOR



SECOND FLOOR

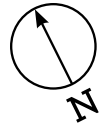


THIRD FLOOR



Not to scale

Disclaimer
This brochure and the information contained in it does not form part of any contract, and while reasonable effort has been made to ensure accuracy, this cannot be guaranteed and no representation or warranty is made in that regard. Apartment designs and layouts are indicative only and may change. The specification of the apartments is the anticipated specification as at the date this brochure was prepared, but may be subject to change in accordance with permitted variances under the apartment sale contracts. Dimensions shown in any text or plan are approximate sizes only and actual sizes may be different once constructed (although it is not anticipated that any apartments will be reduced by more than 5% in size). Computer generated images and photos are indicative only. All sales remain subject to contract. All information regarding prospective commercial or retail tenants represents current intention only, and the final identity of the tenants may change. Furniture shown in Computer Generated Images and photos is not included in sales. Royal Wharf is a marketing name only and will not necessarily form part of the approved postal address. Neither the agents nor any person in their employ has any authority to make or give any representation warranty or guarantee (whether written or oral) in respect of or in relation to the development (or any parts thereof).



ROYAL WHARF

LONDON

MARITIME BUILDING

TOWNHOUSES

10-18

3 BEDROOM

Internal area: 170.6 sq.m / 1836 sq.ft	First floor balcony: 4.0 sq.m / 43 sq.ft
Kitchen area: 4300 mm x 3420 mm	First floor balcony: 3.6 sq.m / 38 sq.ft
Dining area: 5110 mm x 3420 mm	Third floor balcony - front: 3.5 sq.m / 37 sq.ft
Living area: 9510 mm x 2990 mm	Third floor balcony - rear: 20.5 sq.m / 221 sq.ft
Bedroom 1: 5095 mm x 3610 mm	Garden: 32.8 sq.m / 353 sq.ft
Bedroom 2: 2990 mm x 3655 mm	
Bedroom 3: 3990 mm x 3700 mm	



GROUND FLOOR



FIRST FLOOR



SECOND FLOOR



THIRD FLOOR

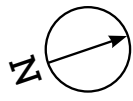
LEGEND

- C: Cupboard
- W: Wardrobe
- FF: Fridge Freezer
- WM: Washer/Dryer
- B: Balcony



Not to scale

Disclaimer
This brochure and the information contained in it does not form part of any contract, and while reasonable effort has been made to ensure accuracy, this cannot be guaranteed and no representation or warranty is made in that regard. Apartment designs and layouts are indicative only and may change. The specification of the apartments is the anticipated specification as at the date this brochure was prepared, but may be subject to change in accordance with permitted variances under the apartment sale contracts. Dimensions shown in any text or plan are approximate sizes only and actual sizes may be different once constructed (although it is not anticipated that any apartments will be reduced by more than 5% in size). Computer generated images and photos are indicative only. All sales remain subject to contract. All information regarding prospective commercial or retail tenants represents current intention only, and the final identity of the tenants may change. Furniture shown in Computer Generated Images and photos is not included in sales. Royal Wharf is a marketing name only and will not necessarily form part of the approved postal address. Neither the agents nor any person in their employ has any authority to make or give any representation warranty or guarantee (whether written or oral) in respect of or in relation to the development (or any parts thereof).



ROYAL WHARF
LONDON

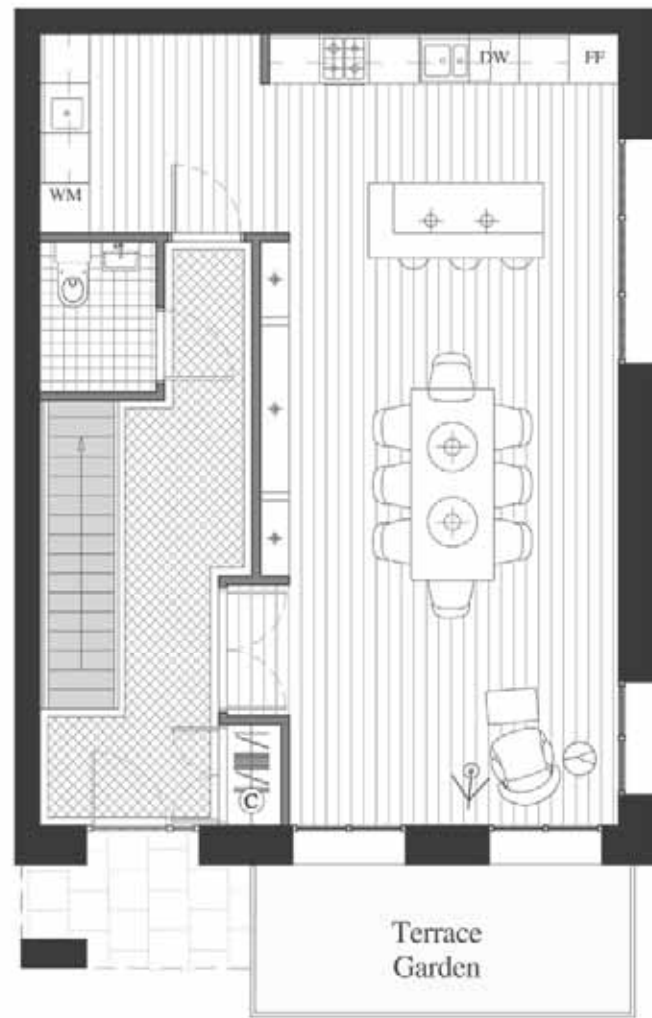
MARITIME BUILDING

TOWNHOUSES

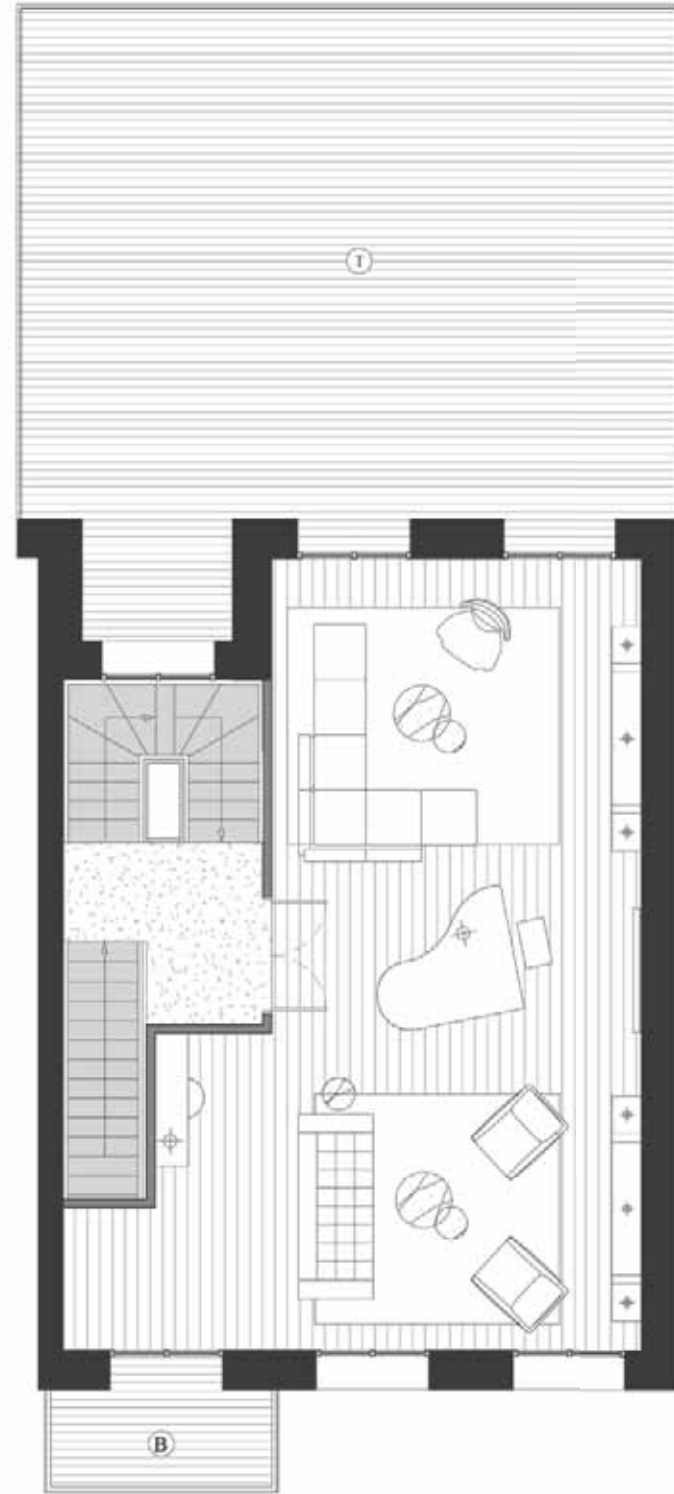
19

4 BEDROOM

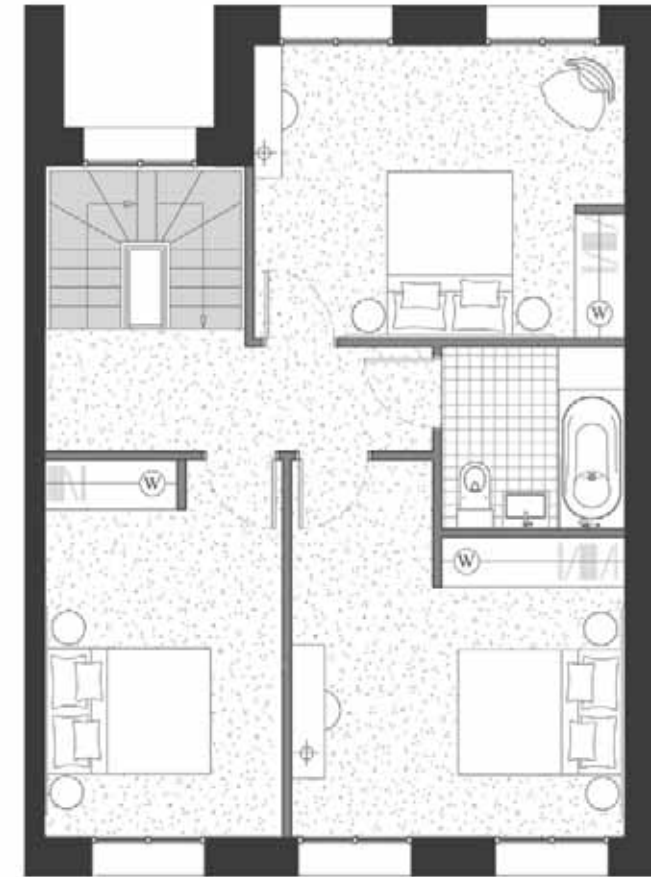
Internal area: 231.2 sq.m / 2489 sq.ft	Bedroom 4: 4930 mm x 4600 mm
Kitchen area: 4300 mm x 4300 mm	First floor balcony - front: 4.1 sq.m / 44 sq.ft
Dining area: 5110 mm x 4300 mm	First floor terrace - rear: 57.2 sq.m / 615 sq.ft
Living area: 9510 mm x 5860 mm	Bedroom 1: 4450 mm x 3525 mm
Bedroom 1: 4090 mm x 3600 mm	Third floor terrace: 27.5 sq.m / 296 sq.ft
Bedroom 2: 4530 mm x 2760 mm	Garden: 7.9 sq.m / 85 sq.ft



GROUND FLOOR



FIRST FLOOR



SECOND FLOOR



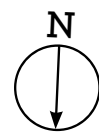
THIRD FLOOR

LEGEND

- C: Cupboard
- W: Wardrobe
- FF: Fridge Freezer
- WM: Washer/Dryer
- B: Balcony



Disclaimer
This brochure and the information contained in it does not form part of any contract, and while reasonable effort has been made to ensure accuracy, this cannot be guaranteed and no representation or warranty is made in that regard. Apartment designs and layouts are indicative only and may change. The specification of the apartments is the anticipated specification as at the date this brochure was prepared, but may be subject to change in accordance with permitted variances under the apartment sale contracts. Dimensions shown in any text or plan are approximate sizes only and actual sizes may be different once constructed (although it is not anticipated that any apartments will be reduced by more than 5% in size). Computer generated images and photo's are indicative only. All sales remain subject to contract. All information regarding prospective commercial or retail tenants represents current intention only, and the final identity of the tenants may change. Furniture shown in Computer Generated Images and photo's is not included in sales. Royal Wharf is a marketing name only and will not necessarily form part of the approved postal address. Neither the agents nor any person in their employ has any authority to make or give any representation warranty or guarantee (whether written or oral) in respect of or in relation to the development (or any parts thereof).



ROYAL WHARF

LONDON

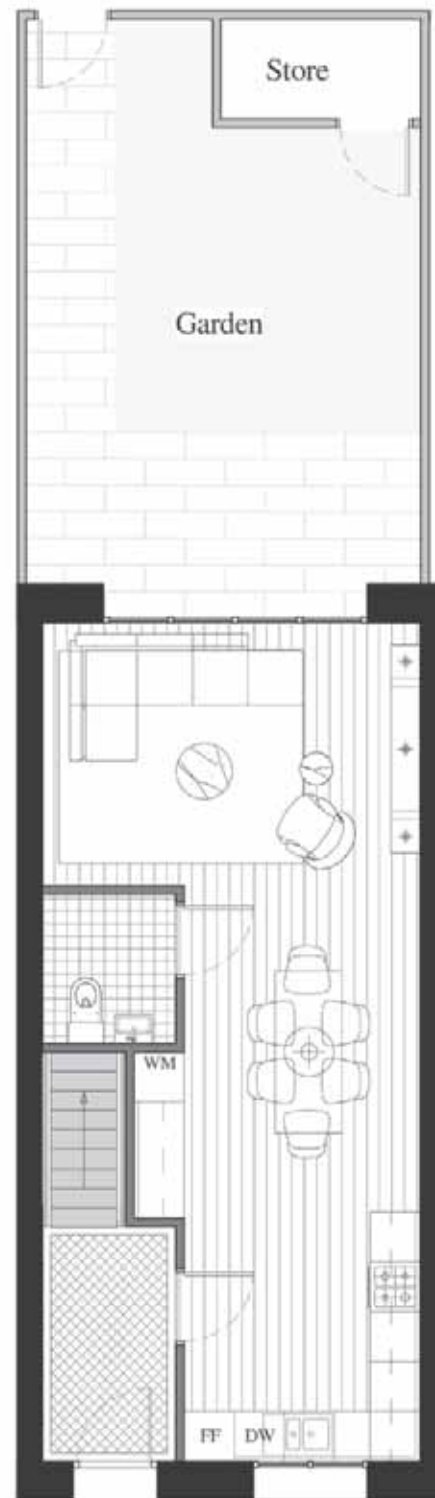
MARITIME BUILDING

TOWNHOUSES

20-23

4 BEDROOM

Internal area:
115.6 sq.m / 1244 sq.ft
Kitchen area:
3000 mm x 2800 mm
Dining area:
4310 mm x 2800 mm
Living area:
4530 mm x 3150 mm
Bedroom 1:
4530 mm x 3335 mm
Bedroom 2:
4530 mm x 3000 mm
Bedroom 3:
4330 mm x 3430 mm
Second floor balcony - front:
2.6 sq.m / 28 sq.ft
Second floor terrace - rear:
17.6 sq.m / 189 sq.ft
Garden:
29.0 sq.m / 312 sq.ft



GROUND FLOOR



FIRST FLOOR



THIRD FLOOR

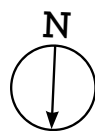
LEGEND

C: Cupboard
W: Wardrobe
FF: Fridge Freezer
WM: Washer/Dryer
B: Balcony



Not to scale

Disclaimer
This brochure and the information contained in it does not form part of any contract, and while reasonable effort has been made to ensure accuracy, this cannot be guaranteed and no representation or warranty is made in that regard. Apartment designs and layouts are indicative only and may change. The specification of the apartments is the anticipated specification as at the date this brochure was prepared, but may be subject to change in accordance with permitted variances under the apartment sale contracts. Dimensions shown in any text or plan are approximate sizes only and actual sizes may be different once constructed (although it is not anticipated that any apartments will be reduced by more than 5% in size). Computer generated images and photos are indicative only. All sales remain subject to contract. All information regarding prospective commercial or retail tenants represents current intention only, and the final identity of the tenants may change. Furniture shown in Computer Generated Images and photos is not included in sales. Royal Wharf is a marketing name only and will not necessarily form part of the approved postal address. Neither the agents nor any person in their employ has any authority to make or give any representation warranty or guarantee (whether written or oral) in respect of or in relation to the development (or any parts thereof).



ROYAL WHARF

LONDON

MARITIME BUILDING

TOWNHOUSES

24-26

3 BEDROOM

Internal area:
124.4 sq.m / 1339 sq.ft
Kitchen area:
3000 mm x 2800 mm
Dining area:
3900 mm x 2800 mm
Living area:
4530 mm x 5050 mm
Bedroom 1:
4980 mm x 4530 mm
Bedroom 2:
4530 mm x 3000 mm
Bedroom 3:
4330 mm x 3430 mm

Second floor balcony - front:
2.6 sq.m / 28 sq.ft
Second floor terrace - rear:
24.6 sq.m / 265 sq.ft
Garden:
33.2 sq.m / 357 sq.ft

LEGEND

C: Cupboard
W: Wardrobe
FF: Fridge Freezer
WM: Washer/Dryer
B: Balcony



GROUND FLOOR



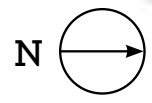
FIRST FLOOR



THIRD FLOOR



Disclaimer
This brochure and the information contained in it does not form part of any contract, and while reasonable effort has been made to ensure accuracy, this cannot be guaranteed and no representation or warranty is made in that regard. Apartment designs and layouts are indicative only and may change. The specification of the apartments is the anticipated specification as at the date this brochure was prepared, but may be subject to change in accordance with permitted variances under the apartment sale contracts. Dimensions shown in any text or plan are approximate sizes only and actual sizes may be different once constructed (although it is not anticipated that any apartments will be reduced by more than 5% in size). Computer generated images and photos are indicative only. All sales remain subject to contract. All information regarding prospective commercial or retail tenants represents current intention only, and the final identity of the tenants may change. Furniture shown in Computer Generated Images and photos is not included in sales. Royal Wharf is a marketing name only and will not necessarily form part of the approved postal address. Neither the agents nor any person in their employ has any authority to make or give any representation warranty or guarantee (whether written or oral) in respect of or in relation to the development (or any parts thereof).



ROYAL WHARF LONDON

ADMIRALTY BUILDING TOWNHOUSES

NOTES



Disclaimer
This brochure and the information contained in it does not form part of any contract, and while reasonable effort has been made to ensure accuracy, this cannot be guaranteed and no representation or warranty is made in that regard. Apartment designs and layouts are indicative only and may change. The specification of the apartments is the anticipated specification as at the date this brochure was prepared, but may be subject to change in accordance with permitted variances under the apartment sale contracts. Dimensions shown in any text or plan are approximate sizes only and actual sizes may be different once constructed (although it is not anticipated that any apartments will be reduced by more than 5% in size). Computer generated images and photo's are indicative only. All sales remain subject to contract. All information regarding prospective commercial or retail tenants represents current intention only, and the final identity of the tenants may change. Furniture shown in Computer Generated Images and photo's is not included in sales. Royal Wharf is a marketing name only and will not necessarily form part of the approved postal address. Neither the agents nor any person in their employ has any authority to make or give any representation warranty or guarantee (whether written or oral) in respect of or in relation to the development (or any parts thereof).
© 2014 Royal Wharf
www.royalwharf.com





ROYAL WHARF

LONDON

ADMIRALTY BUILDING

TOWNHOUSES

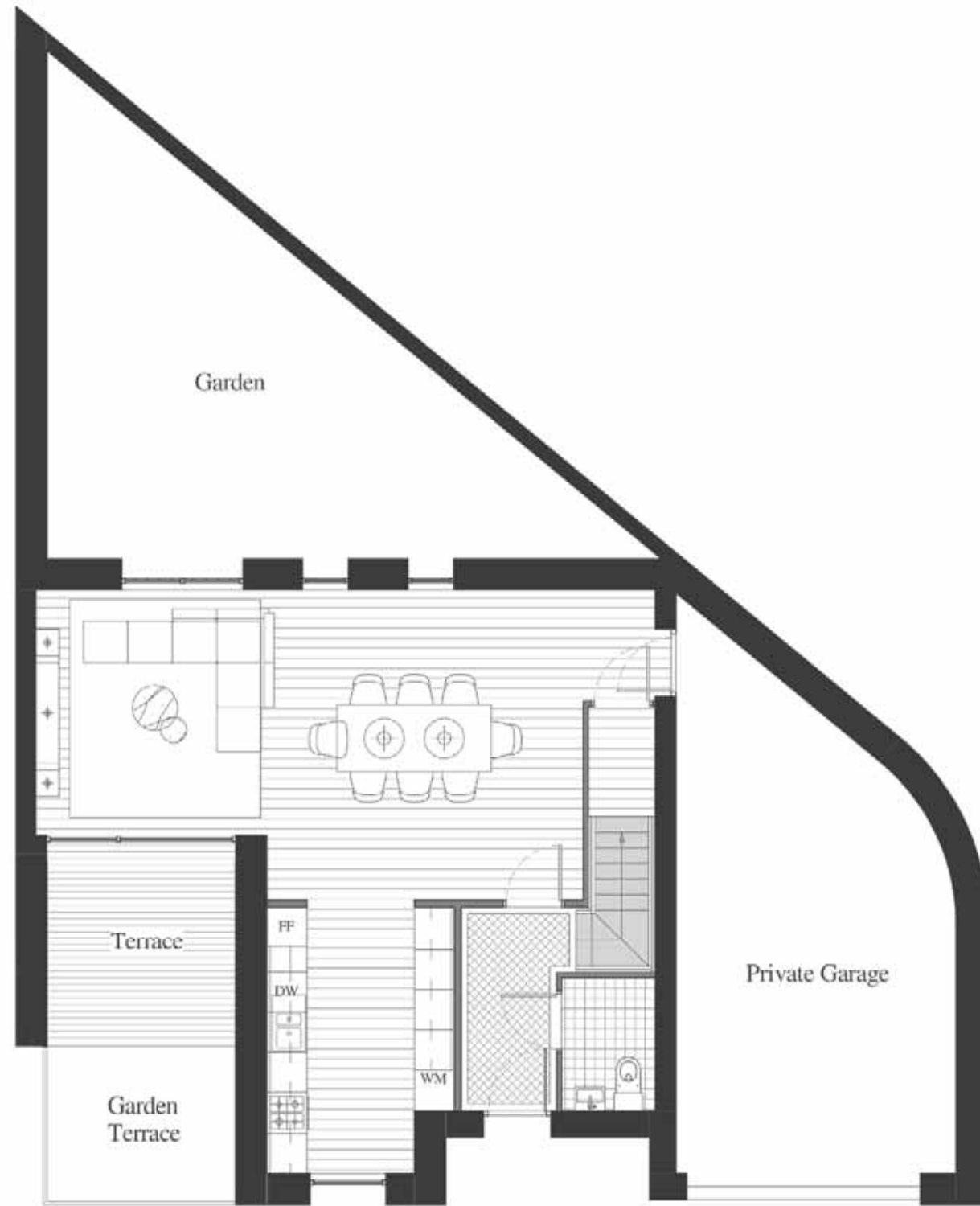
01

3 BEDROOM

Internal area: 150.6 sq.m / 1621 sq.ft	First floor terrace: 13.9 sq.m / 148 sq.ft
Kitchen area: 2800 mm x 4300 mm	Second floor terrace: 14.0 sq.m / 151 sq.ft
Dining area: 9260 mm x 4420 mm	Terrace: 8.8 sq.m / 94.7 sq.ft
Bedroom 1: 3390 mm x 4200 mm	Garden: 41.5 sq.m / 447 sq.ft
Bedroom 2: 3390 mm x 4425 mm	Garage: 28.8 sq.m
Bedroom 3: 4900 mm x 3275 mm	

LEGEND

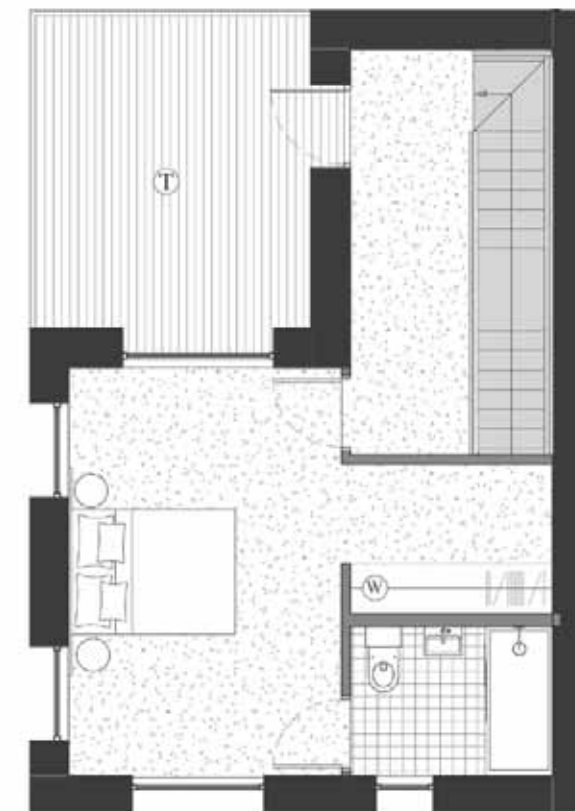
- C: Cupboard
- W: Wardrobe
- FF: Fridge Freezer
- WM: Washer/Dryer
- B: Balcony



GROUND FLOOR



FIRST FLOOR



SECOND FLOOR



Not to scale

Disclaimer
This brochure and the information contained in it does not form part of any contract, and while reasonable effort has been made to ensure accuracy, this cannot be guaranteed and no representation or warranty is made in that regard. Apartment designs and layouts are indicative only and may change. The specification of the apartments is the anticipated specification as at the date this brochure was prepared, but may be subject to change in accordance with permitted variances under the apartment sale contracts. Dimensions shown in any text or plan are approximate sizes only and actual sizes may be different once constructed (although it is not anticipated that any apartments will be reduced by more than 5% in size). Computer generated images and photo's are indicative only. All sales remain subject to contract. All information regarding prospective commercial or retail tenants represents current intention only, and the final identity of the tenants may change. Furniture shown in Computer Generated Images and photo's is not included in sales. Royal Wharf is a marketing name only and will not necessarily form part of the approved postal address. Neither the agents nor any person in their employ has any authority to make or give any representation warranty or guarantee (whether written or oral) in respect of or in relation to the development (or any parts thereof).



ROYAL WHARF

LONDON

ADMIRALTY BUILDING

TOWNHOUSES

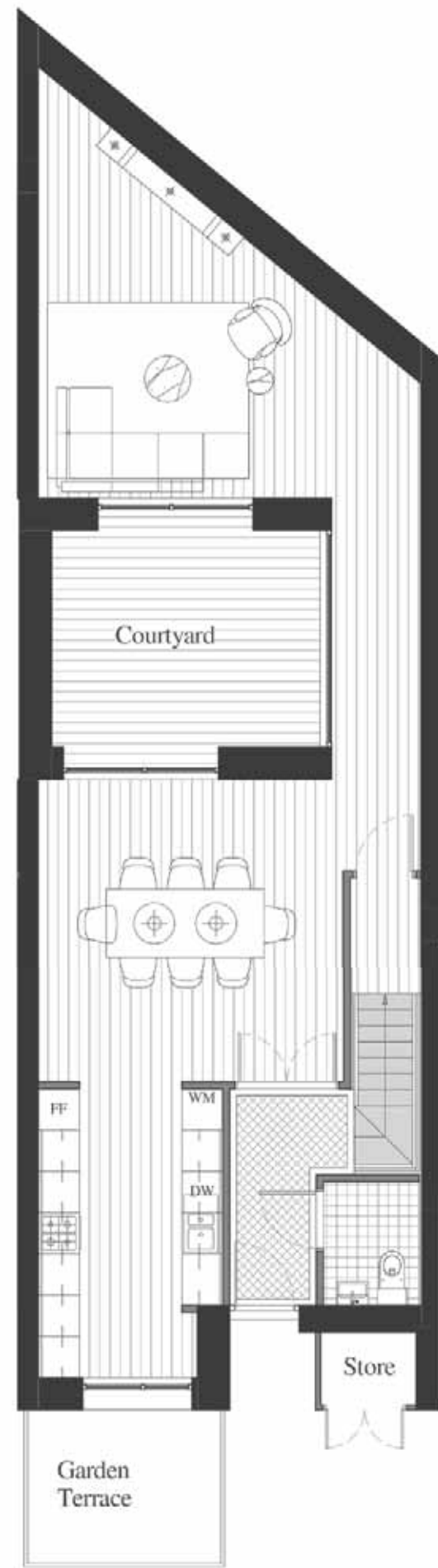
02

3 BEDROOM

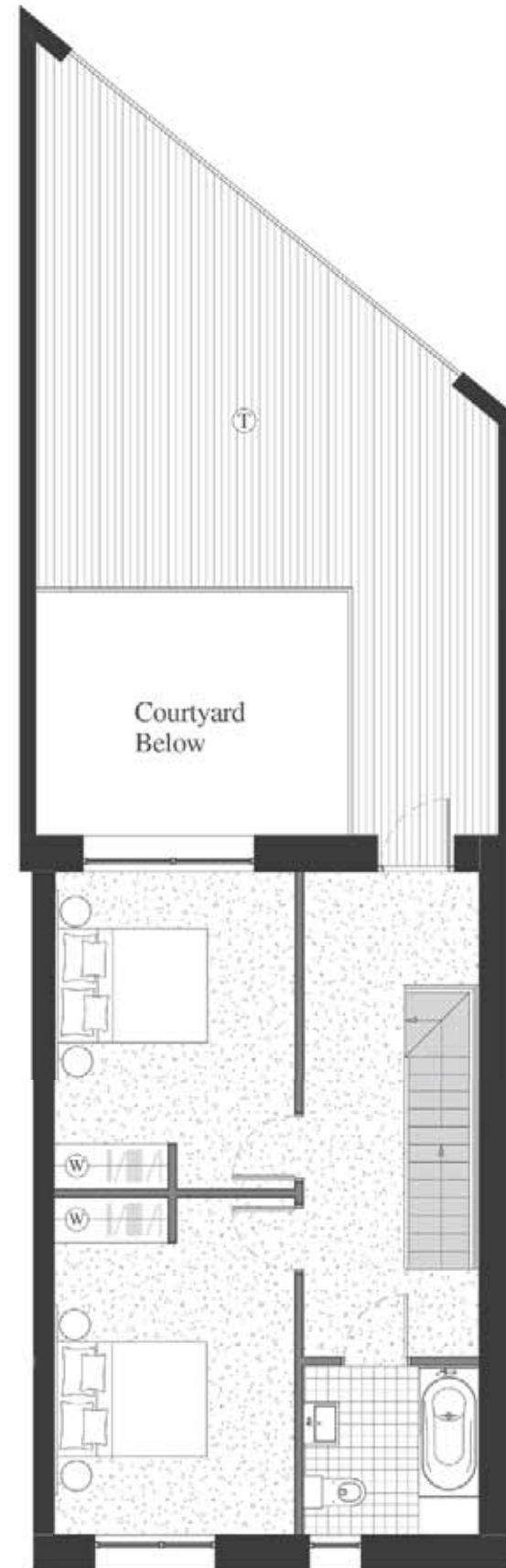
Internal area: 164.4 sq.m / 1770 sq.ft	First floor terrace: 36.0 sq.m / 387 sq.ft
Kitchen area: 4200 mm x 2680 mm	Second floor balcony: 4.8 sq.m / 52 sq.ft
Dining area: 4440 mm x 4420 mm	Garden terrace: 6.5 sq.m / 70 sq.ft
Living area: 5545 mm x 4450 mm	Courtyard: 12.7 sq.m / 137 sq.ft
Bedroom 1: 4425 mm x 3160 mm	
Bedroom 2: 4200 mm x 3160 mm	
Bedroom 3: 7150 mm x 3160 mm	

LEGEND

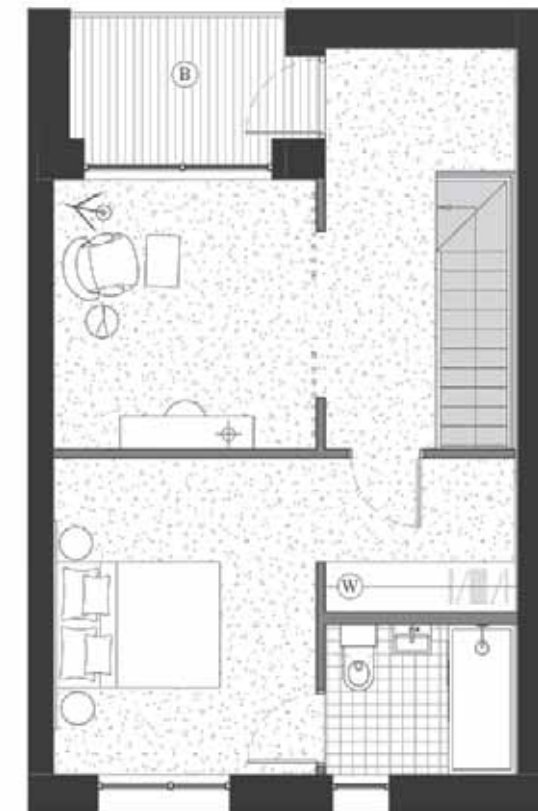
- C: Cupboard
- W: Wardrobe
- FF: Fridge Freezer
- WM: Washer/Dryer
- B: Balcony



GROUND FLOOR



FIRST FLOOR

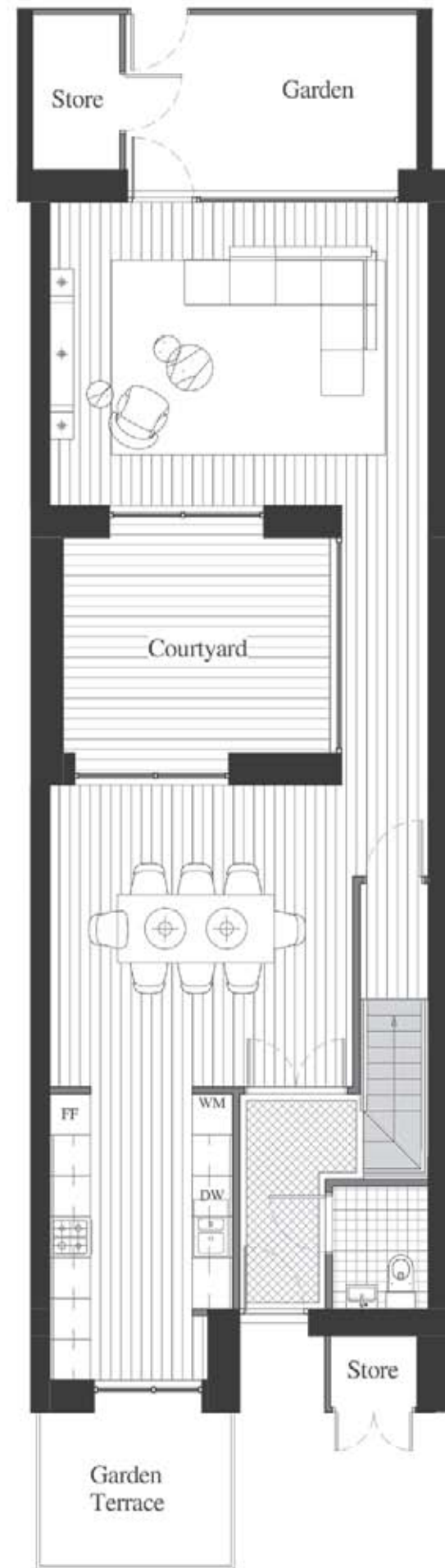


SECOND FLOOR

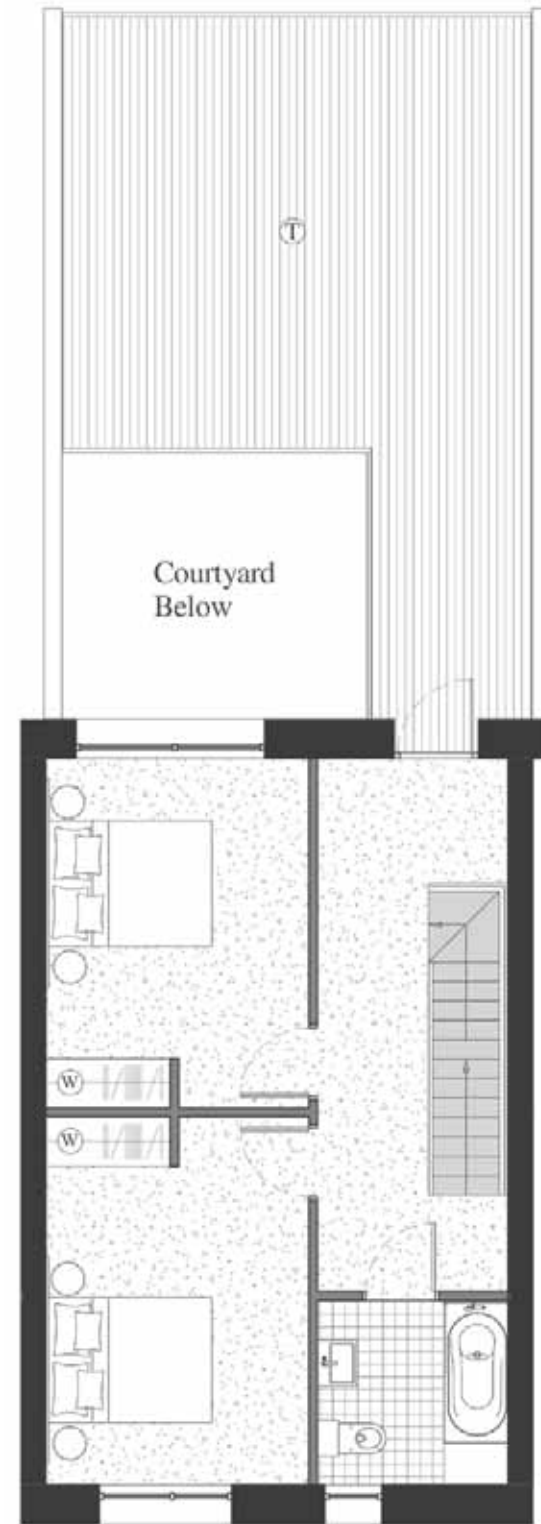


Not to scale

Disclaimer
This brochure and the information contained in it does not form part of any contract, and while reasonable effort has been made to ensure accuracy, this cannot be guaranteed and no representation or warranty is made in that regard. Apartment designs and layouts are indicative only and may change. The specification of the apartments is the anticipated specification as at the date this brochure was prepared, but may be subject to change in accordance with permitted variances under the apartment sale contracts. Dimensions shown in any text or plan are approximate sizes only and actual sizes may be different once constructed (although it is not anticipated that any apartments will be reduced by more than 5% in size). Computer generated images and photo's are indicative only. All sales remain subject to contract. All information regarding prospective commercial or retail tenants represents current intention only, and the final identity of the tenants may change. Furniture shown in Computer Generated Images and photo's is not included in sales. Royal Wharf is a marketing name only and will not necessarily form part of the approved postal address. Neither the agents nor any person in their employ has any authority to make or give any representation warranty or guarantee (whether written or oral) in respect of or in relation to the development (or any parts thereof).



GROUND FLOOR



FIRST FLOOR



SECOND FLOOR

RW
ROYAL WHARF
 LONDON

ADMIRALTY BUILDING

TOWNHOUSES

03-11

3 BEDROOM

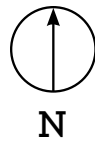
Internal area: 166.1 sq.m / 1788 sq.ft	First floor terrace: 35.9 sq.m / 386 sq.ft
Kitchen area: 4200 mm x 2680 mm	Second floor balcony: 5.1 sq.m / 55 sq.ft
Dining area: 4440 mm x 4420 mm	Garden: 18.0 sq.m / 194 sq.ft
Living area: 5545 mm x 4450 mm	Courtyard: 13.9 sq.m / 148 sq.ft
Bedroom 1: 4425 mm x 3160 mm	
Bedroom 2: 4200 mm x 3160 mm	
Bedroom 3: 7150 mm x 3160 mm	

LEGEND

- C: Cupboard
- W: Wardrobe
- FF: Fridge Freezer
- WM: Washer/Dryer
- B: Balcony



Disclaimer
 This brochure and the information contained in it does not form part of any contract, and while reasonable effort has been made to ensure accuracy, this cannot be guaranteed and no representation or warranty is made in that regard. Apartment designs and layouts are indicative only and may change. The specification of the apartments is the anticipated specification as at the date this brochure was prepared, but may be subject to change in accordance with permitted variances under the apartment sale contracts. Dimensions shown in any text or plan are approximate sizes only and actual sizes may be different once constructed (although it is not anticipated that any apartments will be reduced by more than 5% in size). Computer generated images and photo's are indicative only. All sales remain subject to contract. All information regarding prospective commercial or retail tenants represents current intention only, and the final identity of the tenants may change. Furniture shown in Computer Generated Images and photo's is not included in sales. Royal Wharf is a marketing name only and will not necessarily form part of the approved postal address. Neither the agents nor any person in their employ has any authority to make or give any representation warranty or guarantee (whether written or oral) in respect of or in relation to the development (or any parts thereof).



ROYAL WHARF
LONDON

ADMIRALTY BUILDING

TOWNHOUSES

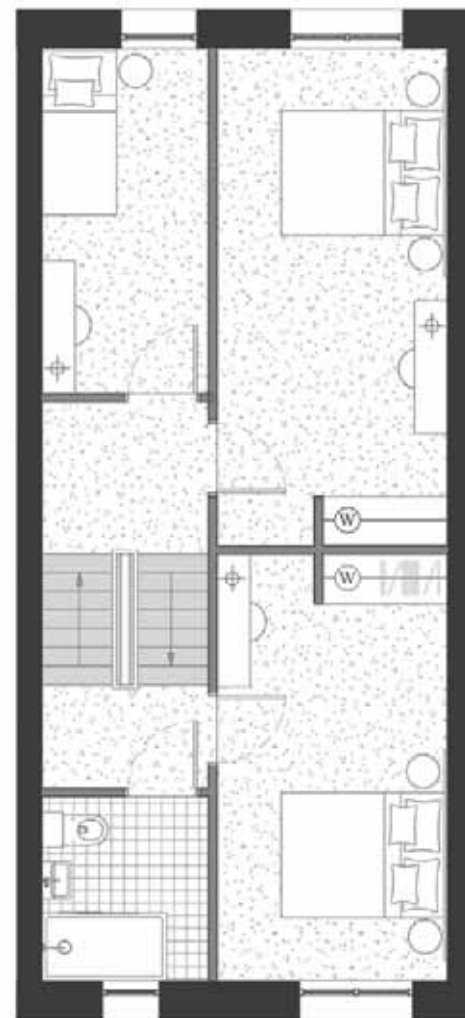
12-16

3 BEDROOM

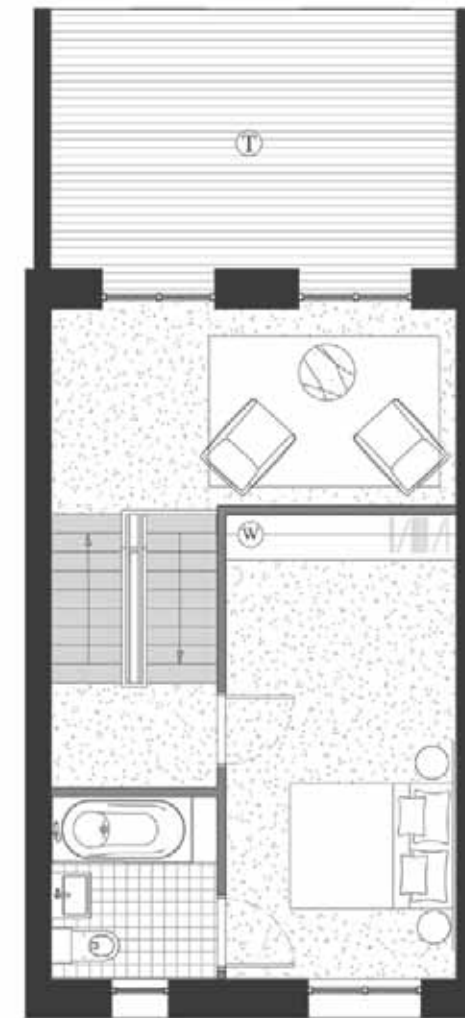
Internal area: 137.6 sq.m / 1480 sq.ft	Bedroom 2: 5555 mm x 2770 mm
Kitchen area: 4200 mm x 2770 mm	Bedroom 3: 4150 mm x 2000 mm
Dining area: 2770 mm x 3600 mm	Bedroom 4: 5635 mm x 2770 mm
Living area: 4870 mm x 3400 mm	Second floor terrace: 16.5 sq.m / 178 sq.ft
Bedroom 1: 5650 mm x 2770 mm	Garden: 30 sq.m / 323 sq.ft



GROUND FLOOR



FIRST FLOOR



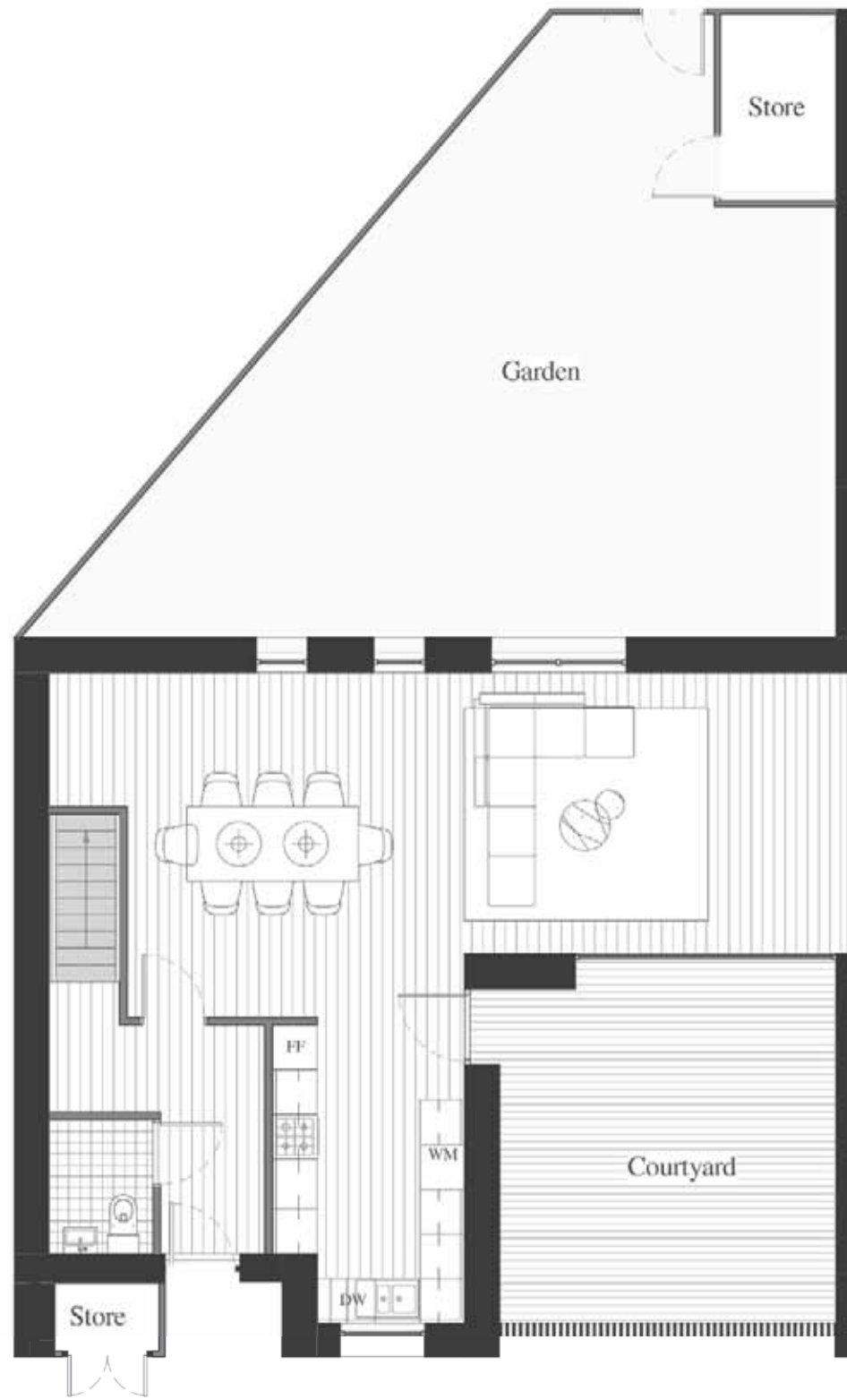
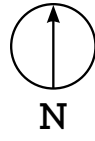
SECOND FLOOR

LEGEND

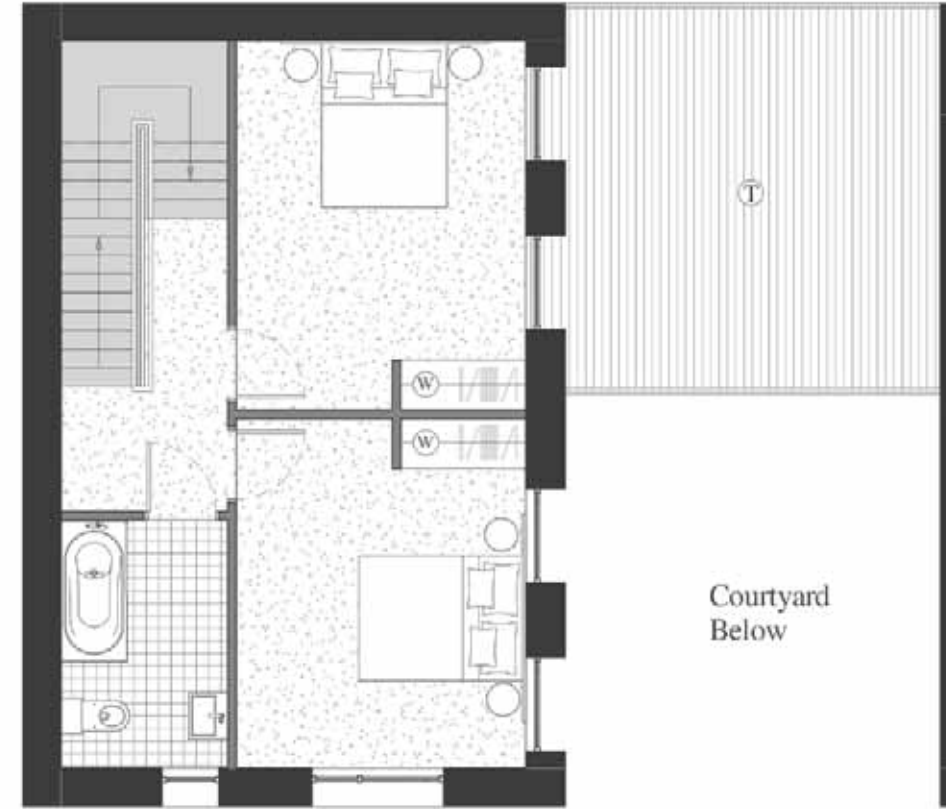
- C: Cupboard
- W: Wardrobe
- FF: Fridge Freezer
- WM: Washer/Dryer
- B: Balcony



Disclaimer
This brochure and the information contained in it does not form part of any contract, and while reasonable effort has been made to ensure accuracy, this cannot be guaranteed and no representation or warranty is made in that regard. Apartment designs and layouts are indicative only and may change. The specification of the apartments is the anticipated specification as at the date this brochure was prepared, but may be subject to change in accordance with permitted variances under the apartment sale contracts. Dimensions shown in any text or plan are approximate sizes only and actual sizes may be different once constructed (although it is not anticipated that any apartments will be reduced by more than 5% in size). Computer generated images and photo's are indicative only. All sales remain subject to contract. All information regarding prospective commercial or retail tenants represents current intention only, and the final identity of the tenants may change. Furniture shown in Computer Generated Images and photo's is not included in sales. Royal Wharf is a marketing name only and will not necessarily form part of the approved postal address. Neither the agents nor any person in their employ has any authority to make or give any representation warranty or guarantee (whether written or oral) in respect of or in relation to the development (or any parts thereof).



GROUND FLOOR



FIRST FLOOR



SECOND FLOOR



ROYAL WHARF

LONDON

ADMIRALTY BUILDING

TOWNHOUSES

17

3 BEDROOM

Internal area: 173.8 sq.m / 1871 sq.ft	Bedroom 2: 4430 mm x 3675 mm
Kitchen area: 4340 mm x 2580 mm	Bedroom 3: 4900 mm x 3275 mm
Dining area: 4620 mm x 4475 mm	First floor terrace: 21.8 sq.m / 235 sq.ft
Living area: 5145 mm x 3870 mm	Second floor terrace: 13.4 sq.m / 144 sq.ft
Bedroom 1: 3475 mm x 4195 mm	Courtyard: 21.3 sq.m / 229 sq.ft
	Garden: 61.5 sq.m / 660 sq.ft

LEGEND

- C: Cupboard
- W: Wardrobe
- FF: Fridge Freezer
- WM: Washer/Dryer
- B: Balcony



Disclaimer
This brochure and the information contained in it does not form part of any contract, and while reasonable effort has been made to ensure accuracy, this cannot be guaranteed and no representation or warranty is made in that regard. Apartment designs and layouts are indicative only and may change. The specification of the apartments is the anticipated specification as at the date this brochure was prepared, but may be subject to change in accordance with permitted variances under the apartment sale contracts. Dimensions shown in any text or plan are approximate sizes only and actual sizes may be different once constructed (although it is not anticipated that any apartments will be reduced by more than 5% in size). Computer generated images and photo's are indicative only. All sales remain subject to contract. All information regarding prospective commercial or retail tenants represents current intention only, and the final identity of the tenants may change. Furniture shown in Computer Generated Images and photo's is not included in sales. Royal Wharf is a marketing name only and will not necessarily form part of the approved postal address. Neither the agents nor any person in their employ has any authority to make or give any representation warranty or guarantee (whether written or oral) in respect of or in relation to the development (or any parts thereof).

SPECIFICATION

MAIN STRUCTURE

Reinforced concrete frame on reinforced concrete piled foundations.

BUILDING ENVELOPE

External wall with quality brick finish and pre-cast cladding.

FLOORS

Engineered timber floors with appropriate floor finishes.

ROOF

High performance membrane with bio roofs (subject to plot).

WINDOWS

Double glazed windows and doors including opening lights (subject to plot and apartment) with a durable finish.

STAIRS

Engineered timber staircase with hardwood balustrades.

WALLS

Party walls constructed from concrete blockwork finished on both sides with sound resistant plasterboard. Internal walls constructed from metal studwork or modern timber panels with plasterboard on each side and acoustic insulation where detailed.

BALCONIES

Where applicable painted steel projecting balconies with painted steel vertical rails and handrails or glass protection panels (subject to plot). Juliette balconies will be formed from either painted vertical steel bars or glass (subject to apartment). All projecting balconies have deck finish.

CEILINGS

Suspended flat plasterboard ceilings throughout.

FLOORING

Engineered oak floor boarding to hall, living area and kitchen. Matte grey ceramic floor tiles to bathrooms, ensuites and shower rooms. Fitted carpets to bedrooms. Diamond pattering feature ceramic tile to floor entrance lobby (where shown on floor plans).

DECORATION

All internal walls painted with warm white washable emulsion, skirting and door frames painted with warm white eggshell paint finishes.

KITCHENS: SUITES, 1, 2 &

3 BEDROOM APARTMENTS

Composite stone worktops fitted with under-mounted stainless steel sink with contemporary deck mounted stainless steel taps. Feature tiled splash-backs. Integrated appliances, comprising combination stainless steel multifunction electric oven, touch control ceramic hob and integrated extractor hood, fridge freezer and dishwasher. Combined washing machine/ tumble dryer located in separate utility cupboard where appropriate. Fitted modular design kitchen units in high gloss finish.

KITCHENS: TOWNHOUSE

Bespoke island unit with composite stone worktop (where shown on plans).

WARDROBES

Integrated wardrobes fitted in all bedrooms with custom designed painted feature doors.

BATHROOMS

Fitted with white enamel bath with chrome finish mixer. Contemporary wall mounted shower and glass bath screen. White ceramic close coupled floor mounted WC. White ceramic wash basin, with chrome lever mixer tap. Bespoke wall mounted mirror finished cabinet in all bathrooms. Chrome finish heated towel rail.

Ceramic tiles to bathroom with feature tiles to shower/bath area. Matte finish floor tiles.

SHOWER ROOMS

Specification as bathroom but fitted with white shower tray, thermostatic wall mounted shower with glass shower screen.

NOTE

Main structure, building envelope, floors, roof, windows, stairs, walls and balconies to Townhouses may vary due to different form of construction technique employed such as modern timber frame.

FIXTURES AND FITTINGS

KITCHEN

Oven

Product: Single electric fan-forced oven.
Location: All apartment kitchens.

Hob

Product: Electric hob with stainless steel and black finish.
Location: All apartment kitchens.

Integrated Dishwasher

Product: Fully integrated dishwasher.
Location: All apartment kitchens.

Integrated Fridge Freezer

Product: Fully integrated fridge freezer.
Location: All apartment kitchens.

Deck mounted kitchen sink mixer

Product: Contemporary style deck mounted sink mixer tap.
Finish: Chrome finish.
Location: Deck mounted to all apartment kitchen work tops.

Kitchen Extractor

Product: Concealed extractor fan.
Finish: Stainless steel.
Location: All apartment kitchens.

Kitchen Sink

Product: Stainless steel undermounted sink.
Finish: Stainless steel.
Location: All apartment kitchens.

Washing Machine

Product: Washer Dryer.
Location: All apartment utility cupboards.

BATHROOM

Deck Mounted Basin Mixer

Product: Contemporary style deck mounted taps.
Finish: Polished chrome.
Location: All apartment bathrooms.

Bath Mixer

Product: Contemporary style bath mixes.
Finish: Polished chrome.
Location: 1, 2 and 3 bedroom apartment bathrooms.

Wall Mounted Shower Set

Product: Contemporary style shower set.
Finish: Polished chrome.
Location: All apartment bathrooms.

Heated Towel Rail

Product: Contemporary style heated ladder towel rail.
Finish: Polished chrome.
Location: All apartment bathrooms.

WC

Product: Close coupled floor mounted WC.
Finish: Glazed sanitary glaze porcelain.
Location: All apartment bathrooms.

Washbasin

Product: Wall hung white ceramic washbasin.
Finish: Glazed white.
Location: All apartment bathrooms.

Integrated Bath

Product name: Built in bath.
Finish: White.
Location: 1, 2 and 3 bedroom Bathroom apartments.

Shower Tray

Product name: High quality solid cast or acrylic shower tray.
Location: All ensuite and suite shower rooms.

Wall Mounted Cabinet

Product: Bespoke mirrored wall mounted cabinet.
Finish: Mirrored.
Location: All apartment bathrooms.

HEATING AND HOT WATER

APARTMENTS AND TOWNHOUSES

Metered system provides heating and hot water from the development's central plant. Centralised wet heating system throughout.

Electrics

Energy efficient lighting in kitchen, hall, bathroom, shower room and ensuite, where appropriate. Switch plates and sockets in accordance with IEE regulations. TV/FM and telephone points for broadband internet access in living room and master bedroom; communal satellite dish with connection points in living room and master bedroom. (Purchasers are responsible for their own connections and related charges for cost of services). Smoke/heat detectors fitted as standard.

Management and security

Management and security services located in the central estate management office. Video entry phone system connected to main entrance door. External CCTV system provided.

Parking

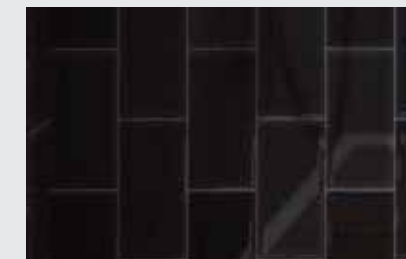
Limited car parking at extra cost and subject to availability.

Elevators

Elevators serve all floors.

External

Ground-level areas laid out and finished with a combination of architect-designed hard and soft landscaping with feature lighting.





Jones Lang LaSalle Residential Pte Ltd
CEA Licence No: L30103591
9 Raffles Place #39-00 Republic Plaza
Singapore 048619
(65) 6220 3888
Intl.sales@ap.jll.com
www.jllresidential.com/sg



Jones Lang LaSalle Residential Pte Ltd for themselves and for the vendors or lessors of this property whose agents they are, give notice that the particulars do not constitute, nor constitute any part of an offer or a contract. All statements, contained in these particulars as to this property are made without responsibility on the part of Jones Lang LaSalle Residential Pte Ltd, or vendors or lessors. All descriptions, dimensions, and other particulars are given in good faith and are believed to be correct but any intending purchasers or tenants should not rely on them as statements or representations of fact and must satisfy themselves by inspection or otherwise as to the correctness of the each of them. No person in the employment of Jones Lang LaSalle Residential Pte Ltd has any authority to make or give any representation or warranty whatever in relation to this property.