

52

---

EXTRAORDINARY 1, 2 & 3 BEDROOM  
SHARED OWNERSHIP APARTMENTS



# CORSAIR HOUSE

AT  
ROYAL WHARF  

---

E16

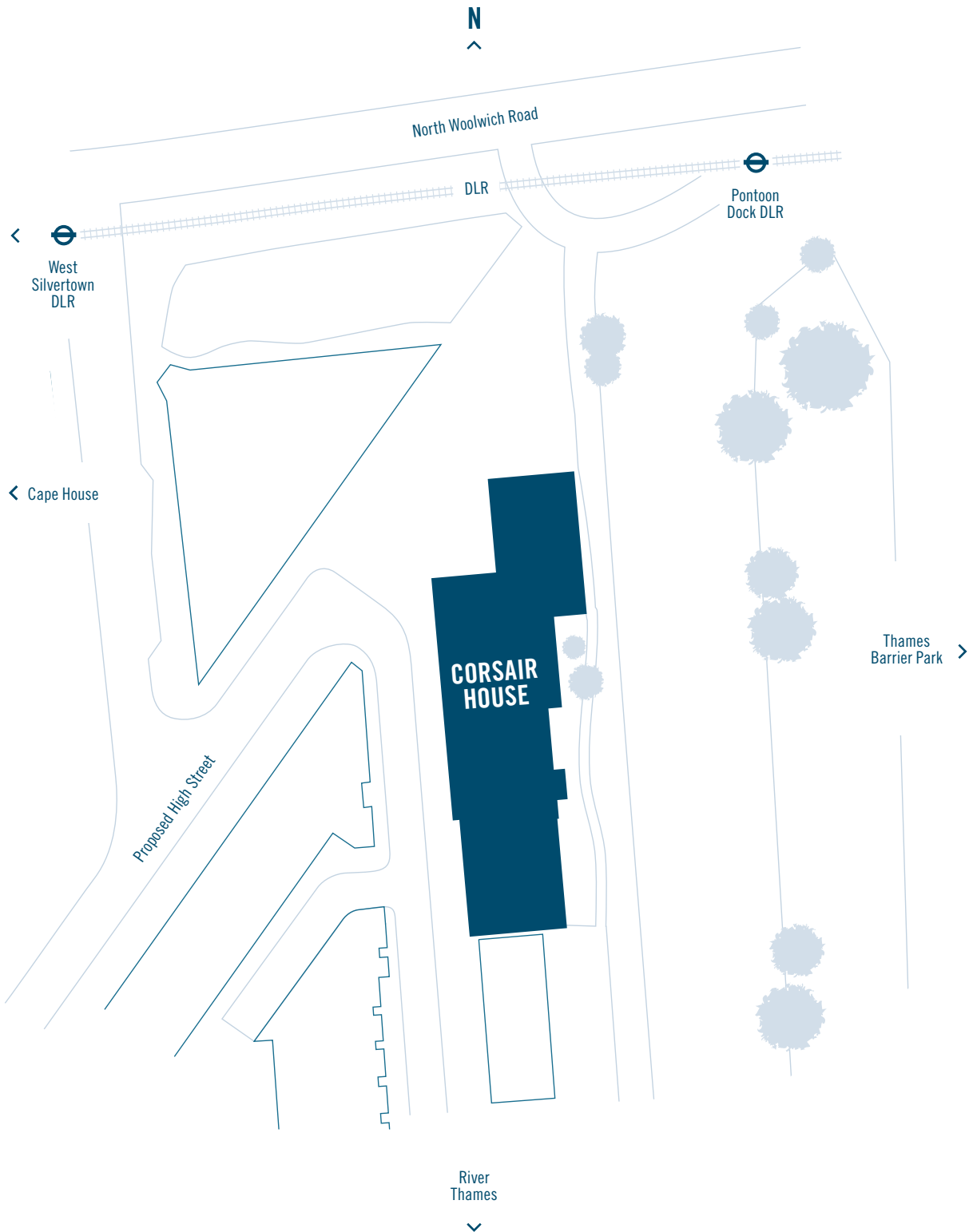
---

PART OF  
TRADERS' QUARTER



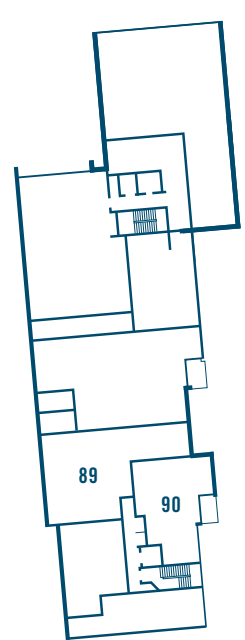
# SITE PLAN

Corsair House offers 52  
1, 2 and 3 bedroom Shared Ownership  
apartments, from ground floor to fifth floor,  
with a high quality specification.

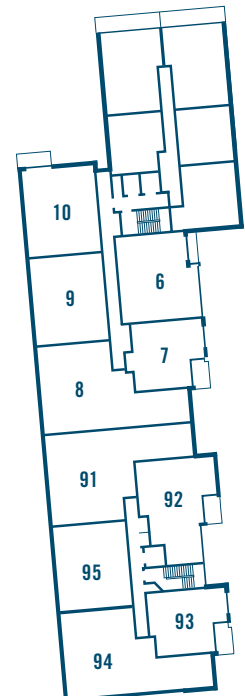


# PLOT LOCATOR

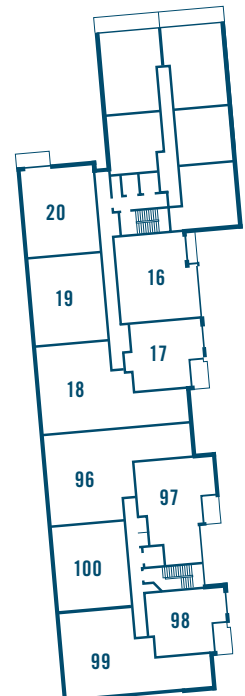
N  
^



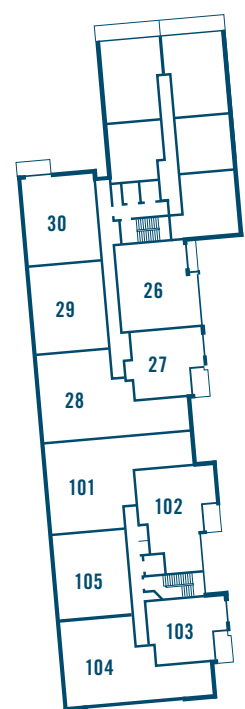
GROUND FLOOR



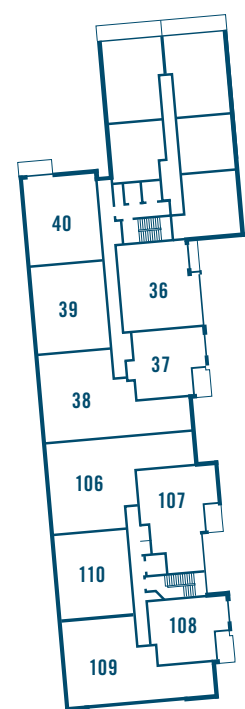
FLOOR 1



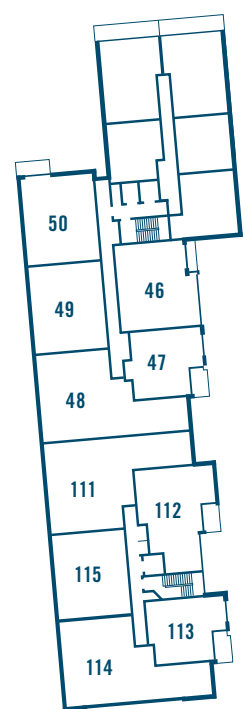
FLOOR 2



FLOOR 3



FLOOR 4



FLOOR 5

TYPE Nº **01**  
**1 BEDROOM**

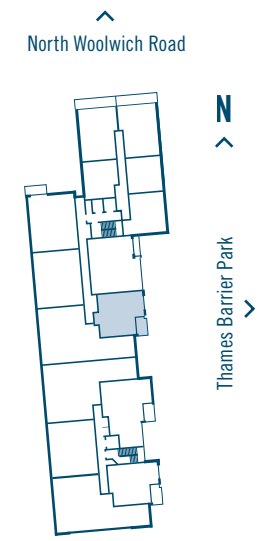
APT	7	17	27	37	47
FLOOR	1	2	3	4	5



## DIMENSIONS

LIVING AREA / KITCHEN	8.0 x 4.0m
BEDROOM	4.0 x 3.2m
BALCONY	3.1 x 1.9m
GROSS INTERNAL AREA	54.1sqm

WM WASHING MACHINE  
W WARDROBE  
HIU HEAT INTERFACE UNIT  
E ELECTRIC CUPBOARD

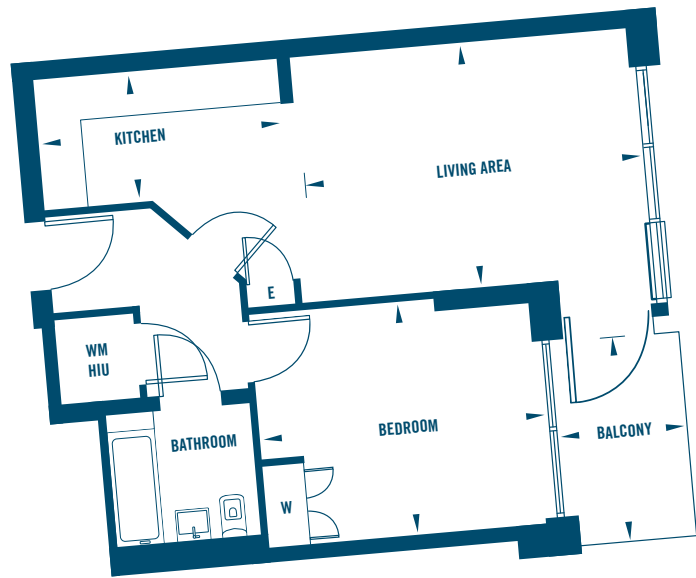
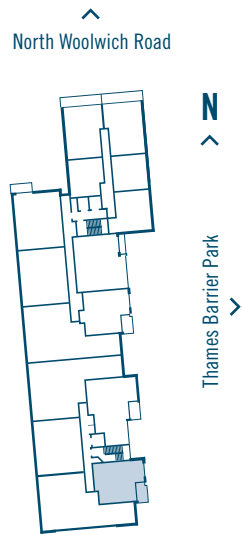


TYPE Nº

# 02

1 BEDROOM

APT	93	98	103	108	113
FLOOR	1	2	3	4	5



### DIMENSIONS

LIVING AREA	5.0 x 3.6m
KITCHEN	3.6 x 1.9m
BEDROOM	4.3 x 3.4m
TERRACE	3.1 x 1.9m
GROSS INTERNAL AREA	55.0sqm

WM WASHING MACHINE  
W WARDROBE

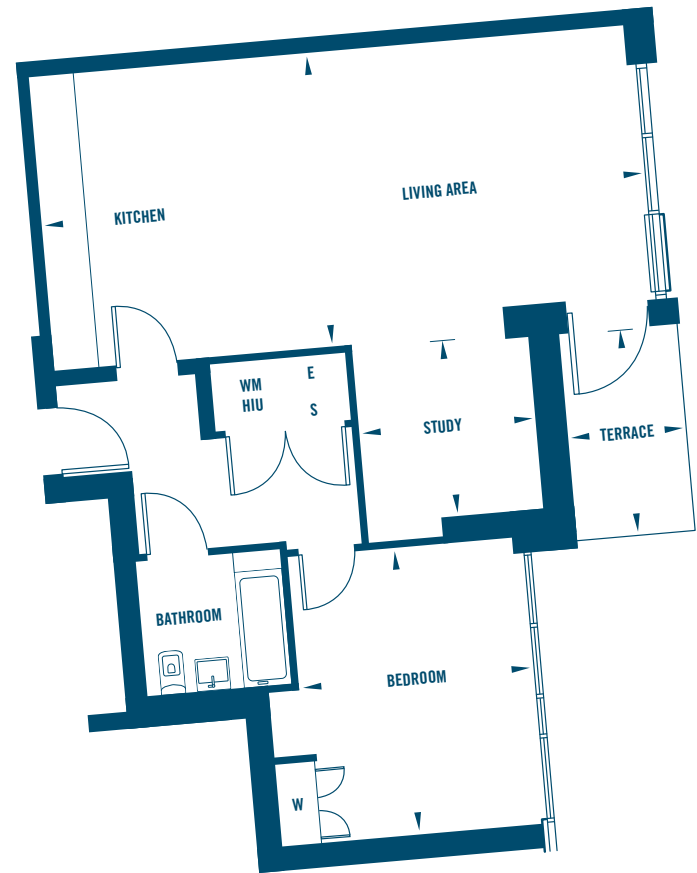
HIU HEAT INTERFACE UNIT  
E ELECTRIC CUPBOARD

TYPE Nº

# 03

1 BEDROOM

APT	90
FLOOR	0



### DIMENSIONS

LIVING AREA / KITCHEN	8.9 x 4.3m
STUDY	2.6 x 2.6m
BEDROOM	4.2 x 3.4m
TERRACE	3.1 x 1.7m
GROSS INTERNAL AREA	77.5sqm

WM WASHING MACHINE  
W WARDROBE  
S STORE

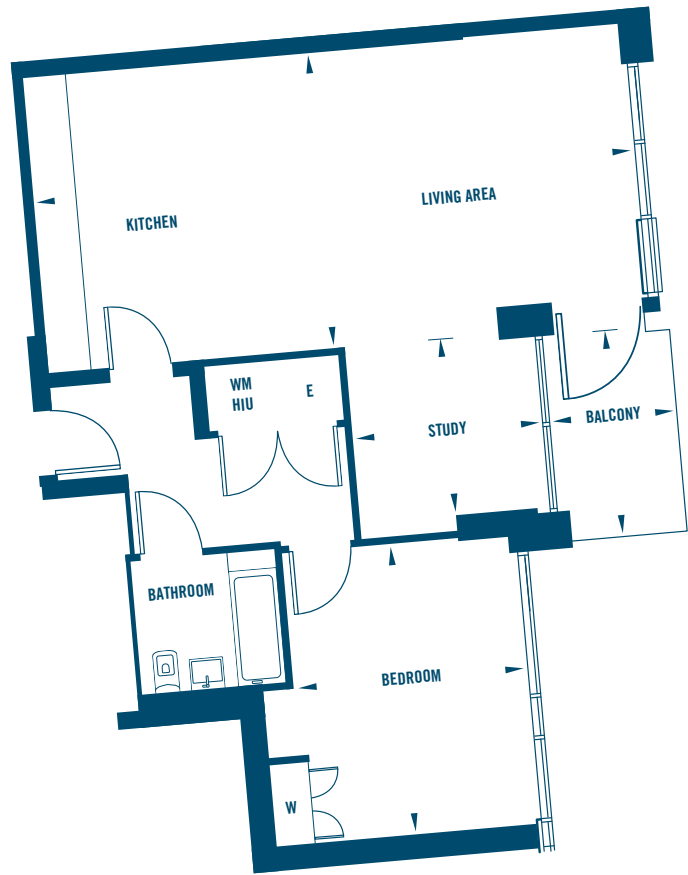
HIU HEAT INTERFACE UNIT  
E ELECTRIC CUPBOARD

TYPE Nº

# 04

1 BEDROOM

APT	92	97	102	107	112
FLOOR	1	2	3	4	5

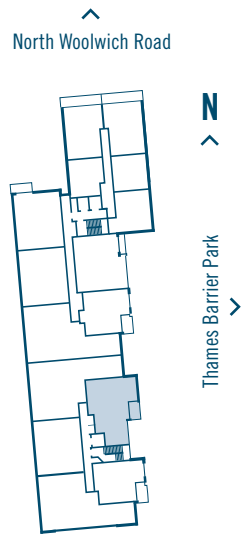


### DIMENSIONS

LIVING AREA / KITCHEN	8.9 x 4.4m
STUDY	2.8 x 2.6m
BEDROOM	4.3 x 3.4m
BALCONY	3.1 x 1.9m
GROSS INTERNAL AREA	77.6sqm

WM WASHING MACHINE  
W WARDROBE

HIU HEAT INTERFACE UNIT  
E ELECTRIC CUPBOARD



TYPE Nº

# 05

2 BEDROOM

APT	95	100	105	110	115
FLOOR	1	2	3	4	5

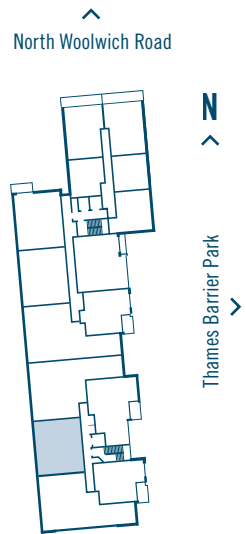


### DIMENSIONS

LIVING AREA	8.1 x 3.4m
KITCHEN	3.5 x 2.6m
BEDROOM 1	5.6 x 3.0m
BEDROOM 2	4.5 x 3.0m
GROSS INTERNAL AREA	76.2sqm

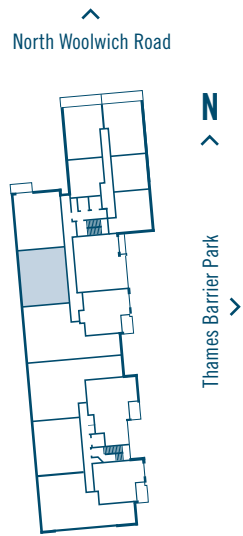
WM WASHING MACHINE  
W WARDROBE

HIU HEAT INTERFACE UNIT  
E ELECTRIC CUPBOARD



TYPE Nº  
**06**  
2 BEDROOM

APT	9	19	29	39	49
FLOOR	1	2	3	4	5



**DIMENSIONS**

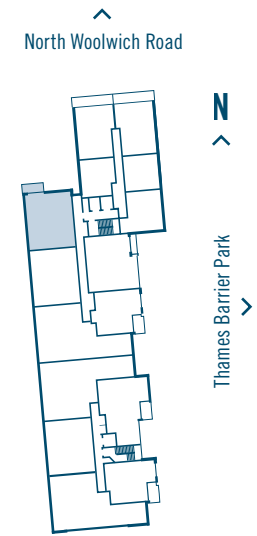
LIVING AREA	8.1 x 3.5m
KITCHEN	3.5 x 2.5m
BEDROOM 1	5.6 x 2.9m
BEDROOM 2	4.5 x 3.0m
<b>GROSS INTERNAL AREA</b>	<b>77.4sqm</b>

WM WASHING MACHINE  
W WARDROBE

HIU HEAT INTERFACE UNIT  
E ELECTRIC CUPBOARD

TYPE Nº  
**07**  
2 BEDROOM

APT	10	20	30	40	50
FLOOR	1	2	3	4	5



**DIMENSIONS**

LIVING AREA / KITCHEN	8.1 x 3.3m
BEDROOM 1	5.6 x 3.0m
BEDROOM 2	4.4 x 3.1m
BALCONY	3.8 x 1.6m
<b>GROSS INTERNAL AREA</b>	<b>77.6sqm</b>

WM WASHING MACHINE  
W WARDROBE

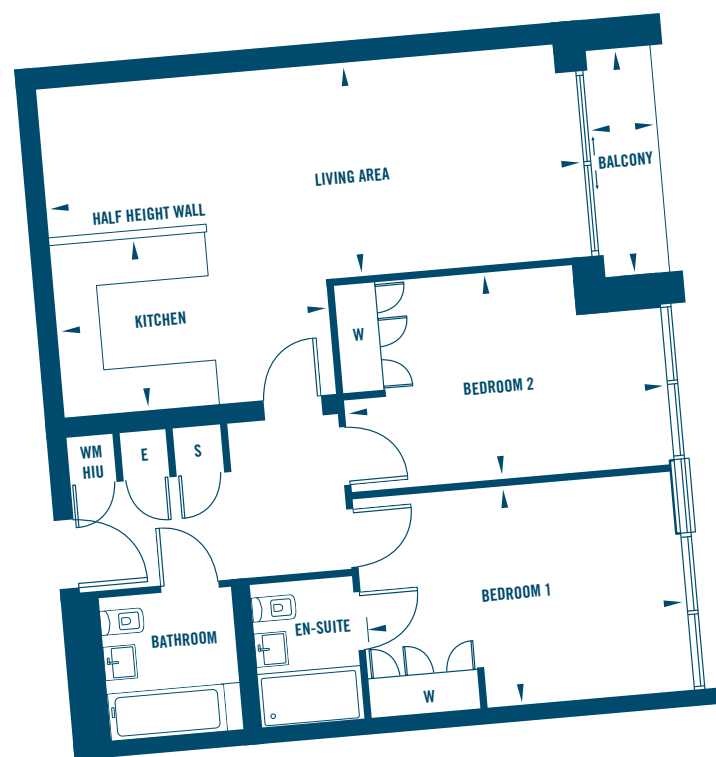
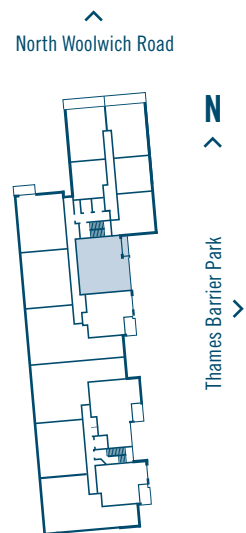
HIU HEAT INTERFACE UNIT  
E ELECTRIC CUPBOARD

TYPE Nº

# 08

2 BEDROOM

APT	6	16	26	36	46
FLOOR	1	2	3	4	5



## DIMENSIONS

LIVING AREA	8.0 x 3.1m
KITCHEN	4.0 x 2.6m
BEDROOM 1	4.7 x 3.2m
BEDROOM 2	4.7 x 3.1m
BALCONY	3.3 x 1.0m
<b>GROSS INTERNAL AREA</b>	<b>80.7sqm</b>

WM WASHING MACHINE  
W WARDROBE  
S STORE

HIU HEAT INTERFACE UNIT  
E ELECTRIC CUPBOARD

TYPE Nº

# 09

3 BEDROOM

APT	94	99	104	109	114
FLOOR	1	2	3	4	5



## DIMENSIONS

LIVING AREA / KITCHEN	10.6 x 3.5m
DINING	4.2 x 3.0m
BEDROOM 1	5.2 x 3.4m
BEDROOM 2	3.5 x 2.9m
BEDROOM 3	4.8 x 2.9m
<b>GROSS INTERNAL AREA</b>	<b>110.9sqm</b>

WM WASHING MACHINE  
W WARDROBE  
S STORE

HIU HEAT INTERFACE UNIT  
E ELECTRIC CUPBOARD



### 3 BEDROOM

APT 89  
FLOOR 0



## DIMENSIONS

LIVING AREA	10.4 x 3.5M
KITCHEN	3.7 x 3.2M
BEDROOM 1	5.7 x 3.2M
BEDROOM 2	3.9 x 3.0M
BEDROOM 3	3.9 x 3.3M
GROSS INTERNAL AREA	113.7sqm

<b>WM</b>	WASHING MACHINE	<b>HIU</b>	HEAT INTERFACE UNIT
<b>W</b>	WARDROBE	<b>E</b>	ELECTRIC CUPBOARD
<b>S</b>	STORE		

### 3 BEDROOM

APT	8	18	28	38	48
FLOOR	1	2	3	4	5



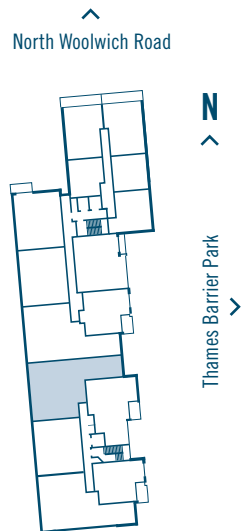
## DIMENSIONS

LIVING AREA / KITCHEN	9.6 x 3.6M
BEDROOM 1	4.6 x 3.5M
BEDROOM 2	4.3 x 2.9M
BEDROOM 3	5.8 x 3.1M
GROSS INTERNAL AREA	114.4sqm

<b>WM</b>	WASHING MACHINE	<b>HIU</b>	HEAT INTERFACE UNIT
<b>W</b>	WARDROBE	<b>E</b>	ELECTRIC CUPBOARD
<b>S</b>	STORE		

TYPE Nº **12**  
**3 BEDROOM**

APT	91	96	101	106	111
FLOOR	1	2	3	4	5



## DIMENSIONS

<b>LIVING AREA / KITCHEN</b>	<b>10.7 x 3.6M</b>
<b>DINING</b>	<b>3.7 x 3.3M</b>
<b>BEDROOM 1</b>	<b>5.7 x 3.2M</b>
<b>BEDROOM 2</b>	<b>3.9 x 3.0M</b>
<b>BEDROOM 3</b>	<b>3.9 x 3.4M</b>
<b>GROSS INTERNAL AREA</b>	<b>115.7sqm</b>

<b>WM</b>	WASHING MACHINE	<b>HIU</b>	HEAT INTERFACE UNIT
<b>W</b>	WARDROBE	<b>E</b>	ELECTRIC CUPBOARD
<b>S</b>	STORE		

# NOTES

[illegible]



SUPPORTED BY  
**MAYOR OF LONDON**

Notting Hill Sales is the sales arm of Notting Hill Housing Group. The information in this document is indicative and is intended to act as a guide only to the finished product. Accordingly, due to Notting Hill Sales policy of continuous improvement, the finished product may vary from the information provided. These particulars should not be relied upon as accurately describing any of the specific matters described by any order under Consumer Protection Regulations 2008. Nor do they constitute a contract or warranty. For new build properties, Notting Hill Sales abides by the NHBC's Consumer Code for Home Builders. For more information please visit: [www.nhbc.co.uk](http://www.nhbc.co.uk). Layouts shown here are for approximate measurements only. They are not necessarily shown to scale. Exact layout and sizes of properties may vary.  
Details are correct at time of going to print, January 2017.

T: 0203 811 2318  
SALES@NHHG.ORG.UK  
NHILLSALES.COM/TRADERSQUARTER