

£2½ million lost by sports clubs as Astroturf plans fail

Students turfed out

Imperial College students may lose out to the tune of £2½ million if a proposal from the Rector, Sir Eric Ash, goes ahead. The money would be taken from the Harlington Gravel Trust Fund and would finance a new hall of residence. The proposal may also break the terms under which the trust has been set up.

Sir Eric hopes to match a proposed donation by St Mary's Hospital Medical School (SMHMS) of £½ million towards the Imperial College/St Mary's Merger Appeal which was created to raise money for new student accommodation. The St Mary's donation is likely to be financed by the sale of some land at their sports grounds in Teddington.

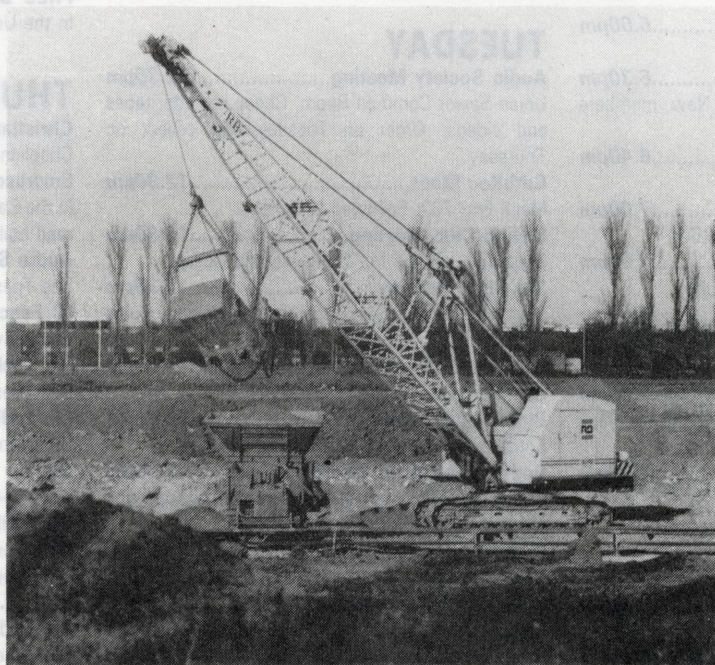
Sir Eric made his proposal in a letter to Union President Neil McCluskey, who is one of the trustees of the Harlington Fund. The letter was copied to Harry Knutton, a College Governor and Chairman of the College Athletics committee, who is chairman of the Harlington Trustees. The third trustee, Steven Goulder, an ex-ICU President, was not aware of the proposal until contacted by Mr McCluskey.

Mr McCluskey said that the trustees of the Harlington Fund had agreed in December that the fund should be spent to 'finance new or improved sporting facilities'. These guidelines are being put to the College Finance and Executive Committee, which takes decisions on major College expenditure, today. Mr McCluskey said that he had heard that concern had been voiced by some of the senior College administration that these terms of reference were too narrow. He is trying to organise a meeting of the trustees to discuss the issue as soon as possible. He said that his view was that money from the fund 'should only be spent on non-athletics projects when the athletics facilities were up to standard'.

Mr Knutton said that he was not going to decide anything until he had met the other trustees. He said that he felt the money should be 'devoted to capital projects for the benefit of students' and that this should be primarily sporting and athletics facilities.

Mr Goulder said that he saw 'no problem with making access to the fund wider than athletics and sports, for example bursaries for overseas travel' but added that he felt 'the Trust is there to establish a fund for student amenities and it is not in our interest to use it for capital development more suited to other methods of funding'.

Mr Goulder said he was 'disappointed that the Rector hasn't felt able to discuss the matter with the trustees before making the decision'. He said that the Rector was 'undermining the nature of the trustees'.



He added that he was worried that College would 'get into thinking that this is a windfall and they can use it to bale them out of short term difficulties'.

Angus Fraser, College's Managing Director, claimed that the proposal to use funds from the Harlington Trust was 'put forward on the basis that the funds are intended to be used for the benefit of students'. He said that the terms of the Trust had been interpreted in the past by Governing Body, the College's highest decision making committee, as including accommodation as well as sporting facilities.

He said he was aware of the recommendations of the trustees, but he felt that they implied a change from the original understanding by Governing Body of the Trust's purpose and were 'more focused and restricted'. He insisted that it was important to clarify the original understanding so that Governing Body would be in a position to endorse or discard the recommendations of the trustees.

The Rector was unavailable for comment. His letter to Mr McCluskey and Mr Knutton indicates that the donation from St Mary's was proposed by the Dean of St Mary's, Professor Peter Richards, who was also unavailable for comment. Rhyddian Hapgood, the SMHMS Union President, said that although the students had no control of the money, the Union felt that if the money 'was coming out of Teddington, it ought to go back into sports facilities at Teddington'.

He said that Professor Richards had discussed the proposal with the St Mary's

Union Executive and that they were 'not averse to the money going towards residences', but that 'IC has not got enough money to support the residences it's got'. He said that it was 'pointless putting the money into accommodation if it's going to make the problem worse'.

A row has also broken out over the Astroturf pitch which was to be built at Harlington. The pitch may not be ready before the start of next year's hockey season. The ICU Hockey Club, who have been playing on hired Astroturf whilst the Harlington Ground is under excavation, will be left without any home pitches for next season.

The scheme has been delayed because some of the senior College administration feel that the quotes obtained for laying the pitch are too high. Angus Fraser, College Managing Director, said that 'the proposed solution as put forward is considerably more expensive than originally estimated'. He said that the proposal was not going to be taken to today's Finance and Executive (F&E) meeting as originally intended because he felt that F&E should be able to 'endorse it with full confidence that the money is being spent in the best possible way' and that this was not possible until 'some points were clarified'.

Benjamin Turner, ICU Athletics Clubs Committee Chairman, said that 'it's important we don't allow the Astroturf to fall so far behind schedule that we do not have a pitch available for next season'. He said that the Hockey Club would have severe difficulties finding pitches for next year at this stage.

continued on back page

Issue 859
Friday 16th February



What's On

AN UP-TO-THE-MINUTE GUIDE TO EVENTS IN AND AROUND IMPERIAL COLLEGE

FRIDAY

- Hang Gliding**.....12.30pm
Southside Upper Lounge. Come and get high.
- Rag Meeting**.....12.35pm
Union Lounge.
- Friday Prayers**.....1.00pm
Southside Gym. Organised by IC Islamic Society.
- Wing Chun Kung Fu**.....4.30pm
Union Gym. Beginners lessons.
- Christian Union Meeting**.....6.00pm
Room 308 Computing.
- Swimming Training**.....6.30pm
Prince's Gardens Sports Centre. New members welcome—all levels of ability.
- Fencing Club Meeting**.....6.40pm
Union Gym. Every week.
- Hypnosis Lecture**.....7.00pm
Great Hall. Organised by IC Rag. £2.50.
- Social Dancing**.....7.00pm
Union SCR. Organised by Dance Club.
- Water Polo Session**.....7.30pm
Prince's Gardens Sports Centre. New members welcome—all levels of ability.
- Cricket Indoor Nets**.....7.45pm
Met in Mech Eng Foyer. Bring your whites, we have three nets this term.
- IC Radio Disco**.....8.30pm
Southside.

SATURDAY

- Karate Practice**.....10.00am
Southside Gym.
- Rag Monopoly**.....10.00am
All around London in aid of BIBIC. Fancy dress, meet Union Snack Bar.
- Wu Shu Kwan**.....4.30pm
Southside Gym. Beginners Class.

SUNDAY

- Chaplaincy Sunday Service**.....10.00am
Sherfield Building Anteroom.
- Wargames**.....1.00pm
Senior Common Room, Union Building.
- Wu Shu Kwan**.....4.30pm
Union Gym. Beginners Class.
- RCSU Night in the Bar**.....7.00pm
Meet in the Bar. Every week.

MONDAY

- RockSoc Meeting**.....12.30pm
Southside Upper Lounge. Interested in any form of Rock Music? Come along and have a beer.
- ICCAG AGM**.....12.45pm
Southside Upper Lounge for AGM and Elections.
- Cross Country & Athletics**.....5.30pm
Union Gym. Jogging in Hyde Park and socialising later in Southside.
- Keep Fit**.....5.30pm
Southside Gym with Vicky.
- Improver's Ballroom**.....6.00pm
JCR. Dance Club.
- Beginners Rock 'n' Roll**.....6.45pm
SCR.
- Swimming Training**.....6.30pm
Prince's Gardens Sports Centre. New members welcome—all levels of ability.
- Advanced Ballroom**.....7.00pm
JCR.
- WellSoc Meeting**.....7.30pm
Physics LT1. Head of Elec Eng, Igor Aleksander talks on 'Neural Nets for Future Silicon Brains'.
- Karate Practice**.....7.30pm
Southside Gym.
- Water Polo Session**.....7.30pm

Prince's Gardens Sports Centre. New members welcome—all levels of ability.

- Latin American Dance**.....7.45pm
SCR. Beginners.
- Latin American Advanced**.....8.15pm
SCR.
- Medals in Ballroom**.....8.00pm
JCR.

TUESDAY

- Audio Society Meeting**.....12.30pm
Union Senior Common Room. Cheap records, tapes and videos. Order on Tuesday and collect on Thursday.
- CathSoc Mass**.....12.30pm
Mech Eng 702. Followed by lunch.
- Sailing Club Meeting**.....12.30pm
Southside Lounge for 'Guinness and Gossip'.
- Ski Club Meeting**.....12.30pm
Southside Lounge. Sign up for racing, dry slope skiing and trip to France
- ICU Radio Modellers**.....12.30pm
Southside Lounge.
- Riding Club Meeting**.....12.30pm
Southside Lounge.
- Boardsailing Club Meeting**.....12.30pm
Southside Lounge to sign up for Wednesday and weekend trips.
- Ents Meeting**.....1.00pm
Union Lounge.
- Student Christian Movement**.....5.30pm
Chaplains Office, Basement Flat, 10 Prince's Gardens.
- Keep Fit**.....5.30pm
Southside Gym with Alice.
- Amnesty Group Meeting**.....5.30pm
Brown Committee Room.
- ICU Radio Modellers**.....5.30pm
Mech Eng. Student training workshop.
- Christian Union Meeting**.....5.40pm
308 Computing.
- Wine Tasting**.....6.00pm
Senior Common Room. Everyone welcome.
- Canoe Club**.....6.00pm
Meet in Beit Quad or we can be found in Southside Upper Lounge from 8.30-ish. Beginners welcome.
- New Beginners Ballroom**.....6.00pm
JCR.
- Judo**.....6.30pm
Union Gym.

- Intermediate Ballroom**.....7.00pm
JCR. Dance Club
- Operatic Society Concert**.....7.30pm
Union Concert Hall. OpSoc presents 'Utopia Limited' by Gilbert and Sullivan.
- Improver's Ballroom**.....8.00pm
JCR.

WEDNESDAY

- Sailing Club Meeting**.....12.30pm
Outside Southside for sailing.
- Keep Fit**.....12.30pm
Southside Gym with Vicky.
- Envirosoc Lecture**.....12.45pm
Mech Eng 542. 'Cycling in London'.
- Wargames**.....1.00pm
Senior Common Room, Union Building.
- Midweek Service**.....1.00pm
Holy Trinity Church, Prince Consort Road.
- Wing Chun Kung Fu**.....1.00pm
Union Gym. Beginners lessons.
- Ten Pin Bowling**.....2.00pm
Meet at Gloucester Road tube.
- Wutan Tai Chi Chuan**.....3.00pm
Union Lounge. Instructor Hong Chun Lai. Martial art for all ages and sexes.

- Ladies Only Water Polo**.....6.30pm
IC Sports Centre. Enthusiastic new members welcome—any ability.
- Operatic Society Concert**.....7.30pm
Union Concert Hall. OpSoc presents 'Utopia Limited' by Gilbert and Sullivan.
- Wu Shu Kwan**.....7.30pm
Union Gym. Experts class.
- FREE DISCO**.....9.00pm
In the Union Lounge Nightclub until 1am.

THURSDAY

- Christian Union Meeting**.....8.15am
Chaplaincy.
- Envirosoc Letter Writing**.....12.00pm
In the Caterpillar Café (Union Snack Bar), to stop the road building plan J.
- Audio Society Meeting**.....12.30pm
See Tuesday's entry.
- IC Fencing Club**.....12.30pm
Union Gym. Every week.
- Ski Club Meeting**.....12.30pm
See Tuesday's entry.
- Methodist Society Speaker Meeting**.....12.30pm
Chemistry 231. Everyone welcome.
- Gliding Club Meeting**.....1.00pm
Aero 254. Come along to arrange your first flight.
- ICSF Library Meeting**.....1.00pm
ICSF Library (below Beit). Members can borrow from 1,700 books.
- YHA**.....12.30
Southside Upper Lounge. Sign up for weekend break. Everyone welcome.
- Balloon Club Meeting**.....1.00pm
Southside Upper Lounge. All newcomers and hardened balloonies welcome. Sign up for weekends in the clouds.
- Keep Fit**.....5.30pm
Southside Gym with Alice.
- Judo**.....6.30pm
Union Gym.
- FilmSoc 'Red Heat'**.....7.30pm
Mech Eng 220. 50p to members, £1.50 others.
- Operatic Society Concert**.....7.30pm
Union Concert Hall. OpSoc presents 'Utopia Limited' by Gilbert and Sullivan.
- Karate Practice**.....7.30pm
Southside Gym.
- IC Radio Disco**.....8.30pm
Next to Southside Bar.
- ICCAG Soup Run**.....9.00pm
Meet Week's Hall Basement Kitchen. Deliver food to London's down and outs.

APOLOGY

FELIX would like to apologise for any offence caused by last week's entry in the 'What's On' column under the title International Night. The entry should have contained a billing for the Afro-Carib Disco rather than the one printed.

The Dutch Courtesan

This is the first in a series of plays staged by The Man in the Moon Theatre highlighting the work of women directors. The series is actually called—yes, you've guessed it—*Women in the Moon*.

This first play is a cut version of John Marston's most infamous 'obscene' comedy in which the use of physical theatre helps translate the play into a satire of moves and manners. The drama highlights the hypocritical behaviour of men when the matter of sex arises.

Set in France in the seventeenth century the play mainly concerns the loves of two friends, Freevill and Malheureux. Freevill is the regular patrol of Mistress Mulligrub's brothel and has a lover there, however he is about to get married and just give her up. Malheureux is a very righteous gentleman and would never dream of frequenting a whorehouse. He also tries to make his friend see the error of his ways. Freevill is convinced that that if Malheureux just went to the brothel once he would see that it was not as sordid as he thought. Malheureux eventually agrees to accompany Freevill but only so he can show him how terrible this thing he is doing is.

When Malheureux is introduced to Freevill's lover Franchesina he instantly falls in love with her. However, when Freevill tells Franchesina that he is going to get married and therefore must leave her, she gets very upset and vows revenge. Besotted with her Malheureux she goes to see Franchesina who tells him that she can only be his lover when he has killed Freevill and brings back his ring as proof. The plot thickens...

John Marston wrote many of the most successful comedies of the seventeenth century either on his own or in collaboration, often with his good friend Ben Johnson. This play is written in the Shakespearean tradition with many subtle plays on words and rhyming couplets separating scenes. In this production this is the only means of telling the end of a scene because the play is really only divided into two acts. Of course the play was not originally staged like that—it would be divided into many scenes—but this production by effective use of very few props and by using the device of the four prostitutes sometimes miming as furniture, for example a desk of table, the play moves along a lot more smoothly and rapidly.

The beginning and end of the play are basically the same with the prostitutes linking arms in the centre of the stage to the accompaniment of discordant music. This lends a feeling of continuity but it really rather mars the end as, again in Shakespearean tradition, the play finishes with all loose ends tied nicely up with a short verse in the manner of an epilogue. That is most definitely the end as far as the play and the audience is concerned and to have this strange symbolic tableau at the end is rather disconcerting. A good play on the whole though.

The Dutch Courtesan is running at The Man in the Moon Theatre Club, 392 King's Road, Chelsea. Once all three plays have opened they will alternate so that all three can be seen in any one week. Ring the Box Office on 01-351 2876 for details. Concessionary tickets cost £4.

JLW.

Theatre

The Revolving Doors

Celeste Beaumont is in the autumn of her life, in self-imposed exile in New York, spending her time doing what she loves most: playing the piano. At the same time she sends a diary to her son Blaudelle (who she barely knows) which tells of the life she has led. Blaudelle is disturbed by the message, his son Antoine, intrigued. Through the diary Antoine follows his grandmother's life, from her adolescence, to the present day, learning the reasons for her estrangement from her son.

The Revolving Doors (*Les Portes Tournantes*) is a French-Canadian film, with English subtitles. Directed by Francis Markiewicz, it has won a couple of awards and worldwide acclaim before its British release. It is easy to see why.

The film takes place on two levels—the life of Celeste in the past, and the reactions of her descendants as they read about it. Although the two seem totally disparate initially, connections begin to emerge—the common piano talent of Celeste and Antoine and the similarity of the relationships between Blaudelle and his wife, and Celeste and her husband, being but two.

The period detail for Celeste's early life in Cambletown, playing the piano to silent movies, is painstakingly recreated and is totally convincing.

It is little details like film posters advertising films of the time that make all the difference. The detail is maintained as history marches on—major events also marking changes in Celeste's life. Through this we see the two plot-lines merge as the reasons for situations in the present are made clear by events in the past. When the two finally merge at the end one is left with a sense that it is only another beginning—not a true end.

The cast are uniformly good, with particular credit going to Gabriel Accard (Blaudelle) who makes a rather simplistic character into a rounded personality. Monique Spaziani (Celeste) also turns in a superb performance, moving away from a straight put upon heroine portrayal to something more three dimensional.

A beautifully plotted and imaginatively shot film, it gives us an enthralling story of a life, and the effects it has on those who follow, played against a musical backdrop of the haunting theme *You Don't Kill a Piano Player*—composed by Celeste in her youth and developed throughout her life. Superb.

The Revolving Doors is showing at the Canon Premiere, Swiss Centre, Leicester Square, from today.

Adam T.

Film

Sea of Love



Occasionally a film leaps off the screen. *Sea of Love* is such a film.

Four years ago Al Pacino starred in *Revolution*, an historical drama that sunk without trace—an absolute disaster. Clearly Pacino has been waiting for the right role to stage his film come back. He has most definitely found a winner. The plot is a classical favourite. Pacino is a downtrodden cop investigating a homicide, who falls in love with the prime suspect. Whether one thinks it is classic or clichéd doesn't matter, because actors, screenwriters, producers etc have worked closely to produce a rather succulent film.

Pacino portrays the cop, one could say again, with his usual acting prowess. His ability to draw you into his character is uncanny. I did not see the characters; I saw them through his eyes. The whole audience was in total empathy with him. This is a dead cert for an Oscar nomination, but not the Oscar itself. The film would be a must if just Pacino was superb, but there is more.

More comes in the form of John Goodman. You may not know the name, but you will know him from his starring role in *Roseanne*—he plays her portly hubby. Here he is a cop who is investigating a carbon

copy of Pacino's case, so they decide to team up with hilarious consequences. This film, however, is not a comedy; when the tension is building it eats away at you, but just before it becomes overbearing a joke is cracked that eases this tension. Some of the humour consists of one line wise cracks, much of it is set up situation comedy; however all of it is central to the plot, it is not just hurled in for the hell of it. Therein lies the beauty of the movie it is very cohesive and fits together like a jigsaw.

The film opens dramatically with a man preparing for sex, who is shot. *Sea of Love* is playing in the background. The only other connection is all the victims are men who placed rhyming ads in a lonely hearts column. Suspicion soon falls on Helen as does Pacino. Their sexy, stormy affair then begins. Some critics find it unlikely that such a stunner would have to resort to the lonely hearts columns to find a man. This does not bother me, she's a working girl with commitments as you will see.

The ending does not fail to please with an unexpected but convincing twist. As you may have gathered I liked this film and thoroughly recommend it.

Sea of Love opens on Feb 16.

Charles Tomkins.

Bent

Theatre

What are the origins of the Pink Triangle? Or for that matter, what are the origins of the Yellow Star, Green Triangle (criminals) and Red Triangle (communists)? The revival of Martin Sherman's celebrated play *Bent*, ten years after its premiere (ironically on the day Margaret Thatcher took office), re-addresses issues just as poignant whether one is talking about modern day Britain or Hitler's Germany.

The hero of the piece, Max (Ian McKellen) is quite the bon viveur. He and his cabaret dancer friend Rudy live peaceably in a thirties Berlin reminiscent of Marlene Dietrich. With the advent of Naziism they are ostracised by so-called friends and, unable to flee the country, are forced to go into hiding. In a flash they are arrested and sent to Dachau. In the second act, without Rudy, Max, in refusing to accept responsibility for his sexuality, pretends to be Jewish rather than homosexual so wears a yellow star and not a pink triangle. This is for the very good reason; in deathcamps such as Dacau, the homosexuals are treated even worse than the Jews, believe it or not. So, Max gets the meat and vegetables from the prison soup whilst Horst (Michael Cashman—Eastenders' Colin), another homosexual, just gets the water skimmed off the top.

Inmates are compelled to needlessly carry rocks from one site to another and then back again; for twelve hours a day. Of course the Nazis, by treating their prisoners like animals, were trying to deprive them of their humanity and self-respect. So that they would die wretchedly with no sense of self. For example, when one man takes his own life, a final act expressing defiance and freedom, the whole of his barrack is forced to stand on parade all night as punishment. Despite this Max manages to maintain his self respect. After twelve hours of intense physical effort moving rocks he still does press-ups at night, thereby reasserting his freedom. Horst remarks that he has a nice body and Max ironically retorts 'Well I take care of it, I exercise'.



Max and Horst, over the course of a year's hard labour together, develop a loving relationship. But as they are never allowed to touch or even look at each other the relationship can only ever be spiritual. They

can only make love to each other in their imaginations. The much talked about 'faked orgasm scene' from *When Harry Met Sally* is made to look like a far fetched American Soap Opera in comparison. Through this Max teaches Horst a sense of defiant self-respect and Max learns he must take full responsibility for his sexuality. So, in its attempt to break them, Nazi Germany paradoxically strengthens them. You could, if you wanted to, make the connection with Clause 28 and Thatcher's Britain or with any other forms of oppression for that matter.

The script, however, is not all 'doom and gloom' and there are many superb one-liners, never detracting from the power of the piece. The acting is first rate, Ian McKellen in particular is excellent. We cannot recommend this production too strongly.

Yet one cannot help thinking that the emotion and sentiment of the production has not been pitched as high as it could have been. Remember that the National Theatre is a *State* subsidised theatre and also that the general aim of Clause 28 is to prevent *State* 'promotion of homosexuality'. So has this production been a victim of oppression as well? Perhaps.

The following article from the New York Times (3 December 1989) was included in the programme:

Bartow, Florida, December 2nd: The American Civil Liberties Union is opposing a County Sheriff's policy that forces homosexual prisoners to wear pink bracelets. For 15 years homosexuals at a jail in Polk County in central Florida have been segregated and worn pink wristbands. 'All hell would break loose if homosexuals were allowed to mix with the general population,' said Sheriff Lawrence Crow Jr.

A Sheriff's Spokeswoman said there was no special reason for pink. 'It's really an off-red,' she said.

Bent is currently playing at the National Theatre, Lyttleton to full houses.

Adrian Pagan and Anna Teeman.

Theatre

A Vision of Love Revealed in Sleep

A man, naked save for a piece of cloth draped around him, stands in the middle of the stage. He tells us of Mr Simeon Solomon, a painter, a Jew and a homosexual. He then unfolds for us the tale of Solomon's life and death in the late 19th and early 20th century. Interspersed with extracts from Solomon's prose poem 'A Vision of Love Revealed in Sleep', and other original sections, composed by the author and main performer Neil Bartlett, he and three others (Betty 'Bloopis' Bourne, Regina Fong and Robin Whitmore) explore the themes of homosexuality, respectability and love.

The performance is very much one of sections, each section almost complete in itself and varying from its neighbours in style and tone, but all developing the basic thrust of the play.

There are moments of comedy—a pastiche of a tour around the National Gallery, ridiculing British attitudes to foreigners and hypocrisy with regard to art, being a good example, and there are moments of high camp; 'It's frock-time, girls!'

Certain sections are extremely chilling—the tale of a gay man walking home through London, suffering abuse from people and graffiti about AIDS, and then returning home to phone friends—and finding them dying of that very disease—is especially frightening.

It could be easy for a heterosexual to sympathise with this, but then dismiss it as a 'gay problem', but it only takes a second thought to remind oneself that AIDS is a threat to all of us, and anyone could soon be playing out the scene in real life.

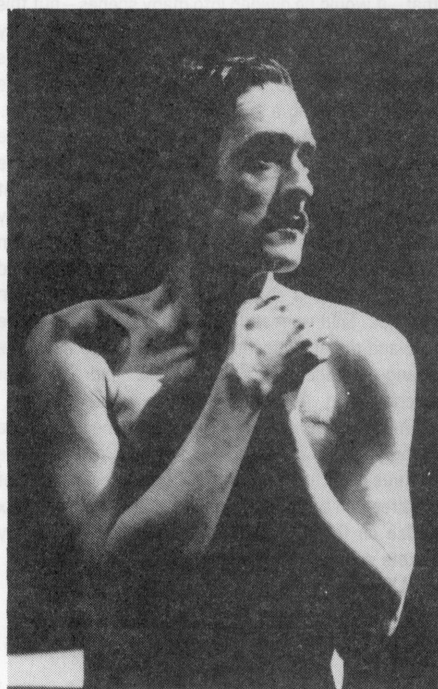
It's not all good though—certain sections of the play are somewhat tedious and have a tendency to drag, and the whole production seems a little overlong—but this does not detract greatly from its overall effect.

The set is minimal—the backdrop is a huge reproduction of a Simeon Solomon painting. On the stage itself there are four boxes which act as storage areas for the props that are used, and which perform a variety of other functions throughout the show. Lighting is used cleverly, and to good effect, as is the music; composed, adapted, arranged and performed by Nicholas Bloomfield.

A beautiful, moving piece about the nature of love, told from a homosexual standpoint.

A Vision of Love Revealed in Sleep (Part 3) is playing at the Drill Hall Arts Centre, Chienes Street, WC1E until 24 February. The nearest tube is Goodge Street and a concessionary ticket costs £4. Phone the box office on 637 8270.

Adam T.



A Guy Called Gerald

—ULU 9.2.90

After hearing everyone and their cousin rave about how on the seventh day God created Manchester, we finally had the opportunity to see what it was all about. *A Guy Called Gerald*, the McDonalds maestro who rose to semi-stardom on the shoulders of singles *Voodoo Ray*, *FX* and *Eyes of Sorrow* was set to play live to a packed and sold out venue. On our arrival we were immediately struck by the extreme stickiness of the floor; in fact while not dodging stray airborne cans of Red Stripe we experienced the sensation of dancing on flypaper. The venue itself was totally unsuitable for Gerald's music, it was a university hall and, despite the effects, it looked and felt like one. There was absolutely no atmosphere.

Soon our attention was focused on the stage and the emergence of a long haired 70s leftover pounding his drums to the sound of *Culture House*. He was joined by the less-than-lethal *Rap Assassins* complete

with pretend scratching and naff dance steps. After a brief intermission provided by Mike Pickering (of 'Hacienda' fame) and his unoriginal orbital anthems we were finally graced with Gerald's presence.

He promptly kicked into an uninspiring set, receiving the best response with singles *FX*, *Eyes of Sorrow* and new single *Automatic*. Ironically Gerald received the best response for his cover of *808 State*.

Rumoured to be amongst the audience were Mark Moore of *S'Express* and some scallie who claimed to be from *The Happy Mondays*: they are probably still stuck to the ULU floor.

While Gerald is a likeable character, he failed to shiver our timbers and I'd assume many people went home feeling somewhat shortchanged.

More hype than Batman and Gerald sucks.

Adam & Dan.

Renegade Soundwave

—Probably a Robbery 12"



Renegade Soundwave serve up possibly the most ridiculous vocal hook so far this year—*Probably A Robbery*...A Bit of Skulduggery but it fits in this heavy bass tune with startling grace. This one should be a monster in the clubs and shows signs of charting. The two 12"s offer you the option of with or without vocal; in addition last year's flop but this year's essential *Ozone Breakdown*, previously available only on import, appears on the limited 12".

Nitzer Ebb

—Lightning Man 12"

The new single by Nitzer Ebb comes as rather a shock. After the violent electronic barrage of their earlier work (with a few brief respites on the *Belief* album) this single breaks new ground in adding a tune to the dynamism in the form of frighteningly funky horns and catchy riffs. This is not a development I had expected, but it does nothing to dampen the energy packed into the song. It almost bursts out at you.

It comes on 'analogue 12" and digital 3"'. The remix 12" is a lot better than the normal one.

The Mission

—Carved in Sand LP

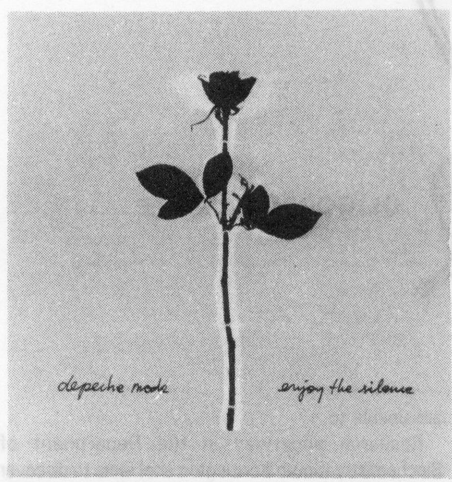
Even the cover shows a change of image for *The Mission* as they experiment with new styles to embrace a wider audience. Tracks range from what we expect from *The Mission* to *Butterfly on a Wheel* (which reached number ten in the Network Charts) to simple ballads.

The album begins with *Amelia*, a song against child abuse. Wayne Hussey's voice sounds strained and harsh as he takes the part of the abuser. *Into the Blue* gives us what the Missionaries have come to know and love, as do *Deliverance* and *Belief*—anthems which, as the titles suggest, conjure up memories of the Reading Festival where fans from around the country raised their voices with one accord to chant 'Give me deliverance'. Ahh—stiring, isn't it?

However, there are surprises, as with *Sea of Love*. What's this? *The Mission* gone to India? It's definitely different, as are the country pasture backing sounds to *Lovely*. That's just Wayne daydreaming about pastoral pleasantries and folklore on an acoustic guitar, sitting in a meadow with a flautist.

Each song is memorable in its own way—a step up and away from their previous albums and a tribute to *The Mission* and producer Tim Palmer. There is something to please everyone without making compromises for it. *Mission* fans will love it, and they'll probably convert quite a few more.

SJH.



Depeche Mode

—Enjoy the Silence 12"

Depeche Mode's later work has not received the success it perhaps deserves; while they are huge on the Continent and vast in the USA (the 12" of *Personal Jesus* was Warner's best-selling single of 1989 and outstripped both Prince and Madonna for this placing) they have never repeated their early Top Ten hits.

This single may or may not change that; like all their recent singles it looks worthy of a high chart showing but like them it may not get it. Musically it marks yet another change in direction, this time to a very simple melody but an immensely addictive one, layered with sound to create an aural collage. The packaging is no surprise—a, by now, traditional Corbijn sleeve and a battery of nothing-like-the-original remixes.

Maybe not a massive hit but a great single anyway. Promises good things for the forthcoming hit *Violater*.

AC Marias

—One of our Girls has gone Missing 12"

This record gives the impression of having been crafted from air and spiderweb, very much where the *Cocteau Twins* could have been today if they'd liked lyrics more. Rather the sort of thing you listen to when you don't know what else to listen to, but an intense experience none the less. The B side is a rather wonderful verion of Lou Reed's *Vicious*.

Stone.



DEL'S HORNY GIG GUIDE

FRIDAY 16th FEB

They Might be Giants + Trashcan Sinatras..... ULU

SUNDAY 18th FEB

Felo-De-Se + The Meerkats.....London Marquee

MONDAY 19th FEB

Cut Cut Emma + Well Loaded.....Kennington Cricketers

TUESDAY 20th FEB

The Mission.....Kilburn National US-UK.....Camden Palace

WEDNESDAY 21st FEB

The Screaming Trees.....Fulham Greyhound

We Are Going to Eat You.....Marquee

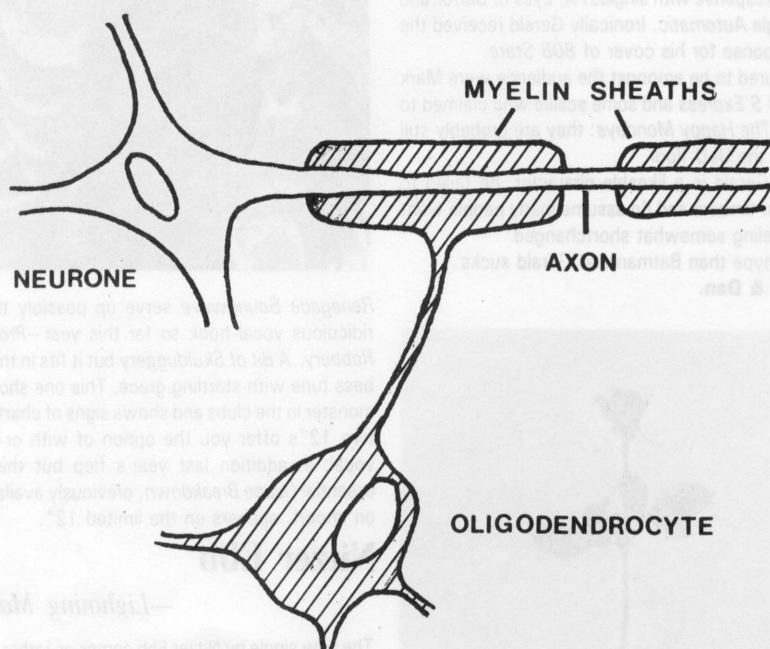
THURS 22nd FEB

Horny Gig of the Week:

The Telescopes + Kitchens of Distinction + New Fast Automatic + Daffodils + The Chairs.....All at ULU

Multiple Sclerosis research at IC

This Week



Around one in a thousand people in the UK suffer from Multiple Sclerosis (MS). It is a disease of the central nervous system prevalent in Europe, North America, Australia and New Zealand, affecting young adults from 20 to 50 years of age. The reason for the confinement of MS to these regions is as yet unknown. Although a virus has often been implicated, the cause of MS is also a mystery.

In the healthy nervous system insulating fat rich sheaths of myelin wrap around the processes of nerve cells (axons). Electrical impulses jump along the nerve from one gap in this sheath to the next. Without this insulating cover each axon would need to be a few millimeters in diameter to carry its signal rapidly. The squid, for example, has no myelin sheathing and has a giant axon two millimetres in diameter, the largest in the animal kingdom.

In MS patients this myelin is stripped off, leaving large areas of bare axons. In the absence of myelin impulses cannot reach their destination, resulting in symptoms ranging from spasticity and paralysis to blindness and speech difficulties, depending on the site of myelin loss. A characteristic feature of many MS cases is the relapsing/remitting course of the disease. From the onset of the disease complete recovery may occur during remissions which can last for many years. As the disease progresses, patients may be left with some permanent handicap after an attack and their condition may worsen as periods between relapses shortens.

Myelin does recover to a certain extent during some stages of the disease. Lesions, or demyelinated areas, are thought to be in a constant state of flux, remyelination competing with demyelination. The reason for incomplete remyelination in MS is unknown. The cell type which produces myelin has been noted in increased numbers around the lesions of MS patients. This would suggest that the cells are there to remyelinate the region but for some reason they

are unable to.

Research underway in the Department of Biochemistry (South Kensington site) aims to discover why remyelination is not effective in MS. By studying the development of the remyelinating cell in culture, we hope to better understand the processes which allow them to produce myelin. It seems that these 'oligodendrocytes' are capable of developing from their precursors to mature myelinating cells when cultured in the absence of neurones. This indicates that chemical signals from neurones may not be necessary to instruct these cells to begin to produce myelin. A signal may be needed, however, to ensure sufficient and correct myelin production. We are at present trying to find molecules which stimulate oligodendrocytes to produce myelin which is capable of wrapping around nerve axons.

It may be the case that oligodendrocytes of MS sufferers can produce myelin but that for some reason it does not wrap around the axon. In healthy people not all types of neurone become myelinated but it is not clear how the oligodendrocyte knows which types of axon to myelinate and which types to leave unmyelinated. It may be that an axon which requires myelinating will carry special molecules on its surface. By comparing the effect on oligodendrocytes of neurones which are not destined to become myelinated and those which are, information may be gained as to the mechanisms and molecules involved in the wrapping of myelin around the nerve axon.

If any fault of the oligodendrocytes present in the MS lesions can be overcome by adding some growth factor or other signal, then perhaps remyelination can be persuaded to conquer over demyelination. Before this is possible, however, much work must be done in order to better understand the myelination process, both during development and in demyelinating diseases like Multiple Sclerosis.

Rebecca Hardy, Dept Biochemistry.

● **A computer system** has been developed which can construct a 3D model of a landscape from two or more photographs. The system has been developed jointly by UCL, Thorn-EMI, The Royal Signals Radar Establishment and Lasercon (a map making company).

Traditionally, such views have been made manually which was laborious and prone to human error. The new technique is far quicker and more versatile. The film produced by NASA's Jet Propulsion laboratory showing the surface of the Uranian moon, Miranda, took several months to make and used equipment costing $\frac{1}{4}$ million. It is claimed that the new apparatus could have done this for \$10,000 in several days.

A project involving NASA and the Soviet Academy of Science will use such software to build up a topographic map of Siberian volcanoes, without the region having to be visited. Less than 40% of the Earth's surface is adequately mapped; with this approach it could be done within a decade.

There are many other uses such as aircraft simulators with real landscapes and robot vision for quality control.

● **The 'Searching for Extra-Terrestrial Intelligence' (SETI) project** has been approved by NASA. The \$100 million programme, planned over ten years, will hunt the electromagnetic spectrum between 1 and 10GHz ($10^9 - 10^{10}$ Hz) for signs of alien activity. It will revolve around a new radio receiver, to be built in California, which is reported to be capable of scanning 14 million channels simultaneously. This is the largest such scheme so far and compares to a budget of one to two million dollars a year during the eighties. The move follows a survey which calculated that 80-90% of ordinary Americans believe that alien life exists, mainly on our neighbouring planet, Mars.

● **The cost of altering computer software for the year 2000** could be billions of pounds. Much of today's business software still uses a six figure number for dates with no provision for years after the turn of the century. The biggest bills are likely to be incurred by the banks and insurance firms. One major company recently modified its pension system at an expense of £120,000. Each charged line of code costs 10 times as much to alter as it did to write in the first place.

● **The British have now joined** two international teams competing to produce the first cost-effective solid fuel cells. These cells, which may well prove to be the power source of the future, utilise a fuel such as natural gas and an oxidising agent, making a highly efficient, silent-running power supply with almost no noxious gas emission.

The two projects are funded by the European Commission as part of the JOULE (Joint Opportunities for Unconventional Longterm Energy supply) initiative. It is hoped that by 1992 an economical 1kW solid oxide fuel cell will have been developed with the capability to be scaled up to a 200kW unit sufficient for a small industrial electricity supply.

Plug: Roger Penrose, the distinguished author of 'The Emperor's New Mind' is giving a talk entitled 'Concerning Computers, Minds, and the Laws of Physics'. This will take place in Huxley 213 on Wednesday 21 February at 1.15pm.

The RSMU are the Pits

Last week's edition of 'PIT', the Royal School of Mines (RSM) newsletter strongly re-affirmed the RSM's appalling reputation in its attitude to women.

This is not an attack on PIT's editorial group, this article aims to illustrate the chauvinism of the RSM, why the way in which women in the RSM are perceived is wrong and why both men and women found PIT offensive.

PIT's page three had a picture of a woman lying naked on a beach—the caption read 'She's waiting for it'. The implication is obvious and should be thought through. The message was clear—if you are female and you are nude it is a clear invitation for sex. If you think a woman sunbathing naked on the beach is asking for sex, then do you think a woman wearing a short skirt is asking to be raped? And do you think that if your mother/sister/girlfriend is out late at night alone she is asking to be attacked? If you accept even the first of these scenarios it is indicative of the way you perceive women.

Women and men are sexual beings, but women are not just sexual beings—they are not sexual objects. The picture on the beach showed women in a very submissive light, it showed a woman as an object, as just a receptacle for sex.

I do not find all images of nude women offensive—only those showing women in submissive roles would I call pornographic. As in the world outside Imperial, much has been made of the fact that men too feature in pornography. In last week's edition of PIT, in perhaps an attempt to disarm those who would criticise the three pictures of women either nude or

semi-nude, two pictures of nude men were also included. One picture was a back view of a bronzed, muscle clad male. The image was one of strength and control—unlike the woman on the beach—this human being appeared in no way submissive and indeed was not shown in a particularly sexual light. The picture held much respect for the subject, unlike that of the woman with its accompanying caption 'She's waiting for it'. The comparison is clear. The inclusion of the male nude in an attempt to balance or excuse the female nude only served to further underline the difference between the perception of male and female. The female is submissive, the male is all powerful.

I felt deeply offended by the use of pornography in PIT. Why is it that some women appeared not in the least bothered by the newsletter? Within the RSM the 'traditions' of beer swilling, pornographic songs and a uniquely offensive departmental newsletter go unchallenged. Within the undergraduate population the pressure to conform to these 'traditions' is strong for both men and women. Women who are not offended by, for example PIT, have, of course, a right to that view. I question the foundations on which these views are based. Women are in a minority in the department and are thus more vulnerable. I believe that for women to accept the uniquely chauvinistic atmosphere of the RSM is the result of a natural wish to be accepted—to be part of their department. I ask these women to stop and think what they are accepting in a personal sense and in the sense of their whole gender.

The male chauvinist atmosphere within the RSM is not just offensive to women but to men also. Chauvinism is not just about a negative attitude to women, it is about the pressure on men to conform to a male ideal. What gives the RSM sports officers the right to pressurise sportsmen not to play for their College but only to play for their Union. RSM is synonymous with excessive, mindless drinking. RSM bar nights only further affirm the ethos; 'The best shape for a miner is to be in a beer barrel.'

Why is chauvinism within the RSM so strong? Is it because of the macho image of 'geology'—is this macho image justifiable? How many graduates will ever actually do the ultimate macho thing and dig a mine? Very few I suspect. There is a strong sense that hand-in-hand with the pressure to conform is the feeling: it's not what you do as much as who you know, that really counts. This is an illusion. The B in BSc does not stand for beer and bravado.

The chauvinism of the RSM is archaic. It is deeply offensive to both men and women. The patterns of behaviour regularly displayed within the department are those of a time long gone by. The year is 1990 not 1890. Friday's De La Beche (DLB) Society lecture was on seismicity. The poster, a 'seismic trace' of a female nude. A DLB Officer when asked how he thought the professor giving the lecture would feel if he knew of the publicity issued on his behalf replied 'We're going to take them all down before he sees them'. The RSM is ashamed and knows it is wrong.

Anna Teeman.

Do you know how much Poll Tax you will be paying?

On February 22 and 23 Imperial College Union will be holding two Poll Tax information days:

how to pay....

THURSDAY 22nd Feb

A representatives from Kensington & Chelsea, and Hammersmith & Fulham Community Charge Offices.

how not to pay....

FRIDAY 23rd Feb

Representative from the Anti-Poll Tax Campaign

Both days in the JCR from 11.30-2.30

THE HEALTH CENTRE PATIENTS GROUP MEETING on Tuesday 20th Feb Health Centre Group Room 4.00pm

All patients and potential patients are invited to air their views on the Health Centre. Constructive criticism welcome.
Ring Julie on 3088 for info

Poll tax—the facts

by Union Welfare Adviser Yve Posner

In May 1989 I wrote an article for FELIX in which I tried to cover all aspects of the Community Charge scheme especially in relation to students. I did point out that the arrangements for some parts of the scheme were not yet in place and that it was likely that there would be some amendments to the regulations before the first payments were due from 1.4.90.

In this article I shall concentrate on those aspects of the scheme about which I have received the most queries over the last few months. Any questions left unanswered should hopefully be resolved during the 'Poll Tax Welfare Campaign' due to take place on Thursday 22 and Friday 23 February. Representatives from Kensington & Chelsea and Hammersmith & Fulham Community Charge Offices will be coming to answer any queries. Even if you live in another Local Authority area, your questions can still be dealt with as the legislation is the same regardless of where your accommodation is situated. On Friday there will be an Anti-Poll Tax group representative to advise those interested in opposing the scheme. In the article however I shall be providing facts only and will not be concerned with the political and moral issues the Poll Tax raises.

Registration for the Community Charge

During May 1989, Local Authorities carried out a canvas of all households whereby a 'responsible person' at each address was asked to complete a registration form giving details of each occupant aged 18 or over. This 'responsible' person also has a legal duty to inform the Local Authority of certain changes in circumstance regarding the occupants eg when a person aged 18 or over leaves or joins the household.

In the case of students living in College halls of residence the 'responsible person' is the College finance department and for those in intercollegiate halls or student hostels the warden is responsible. If you are living in private rented accommodation you cannot assume that the landlord has registered you for poll tax. Therefore if at this stage you have not been notified that your name is on the register you **must** contact your local community charge office. The addresses for the offices closest to Imperial College are listed below. If your office is not included you should contact your Town Hall for details. You will either be able to register by sending in a letter giving details of name, address and date you moved there or you will be sent a form to complete.

You should register for Community Charge within 28 days of moving to an address. If it is found that someone has deliberately avoided registration the community charge registration office has the power to impose a £50 penalty. If that person still fails to register then a £200 fine can be imposed. There is a right of appeal against the imposition of a fine.

A student who registers late because they thought the College had, for example, registered them, would not be penalised. I have checked with the three Local Authorities closest to Imperial College—Kensington & Chelsea, Hammersmith & Fulham and Westminster—and they have all stated that at this stage they are not imposing any penalties. Their aim at present is to get as many people as possible registered before 1.4.90.

Page 8



My poll tax is how much?

The Community Charge Register

Once you have been registered you should receive a copy of your registration entry. This should have details of your name, address and your full-time student status. Most students who were registered before December 1989 will have already received this notification.

If you find that any of the details given in your registration entry are incorrect then you should contact the CCRO in order to have it amended. If the CCRO decides not to amend the entry, you have a right of appeal against this decision.

Your Local Authority Area

A person must be registered for the Poll Tax in the area of their 'sole or main residence'. The law dictates that in the case of full-time students, they must register at their term-time address. It is likely however, that situations will still arise where it is not completely clear where a student's 'sole or main residence' is, and it will therefore be for the CCRO to make a decision based on all the relevant circumstances of the case. If you do not agree with the decision as to where your 'sole or main' residence is you do have a right of appeal.

If you have a permanent change of address during term-time then this will be treated as your new 'sole or main residence'. If by moving you come under the jurisdiction of a different Local Authority you will then start paying Poll Tax to them and cease payment to the Authority covering your old address.

You must not assume that the 'responsible person' and each of the old and new addresses will notify the CCRO regarding your move.

If you have a temporary change of address, eg to attend a field course, this will not affect your registration. You will still be treated as living at your usual term-time address.

Amount of Community Charge Payable

There are three different types of Poll Tax:

1. The Personal Charge—payable by adults aged 18 or over in the area of their 'sole or main residence'.
2. The Standard Charge—payable by owners of properties not held as a sole or main residence eg, second homes, vacant properties.
3. The Collective Charge—payable by landlords of properties where there is a high turnover of residents, eg hotel, short stay hostel.

If your landlord is proposing to charge you for your Poll Tax in your rent he will be doing so illegally. A full-time student will pay the personal community charge. It is unlikely that many students will also be responsible for the standard charge as very few own properties in which they do not live during term-time.

However if you do own a property outside London, the amount of standard charge payable will be decided by the Community Charge Office. If the property is rented out on a commercial basis then the standard charge will not be payable.

The amount of Poll Tax that a full time student has to pay is 20% of the Personal Charge for the area in which he/she lives.

As most of you are aware there has been an enormous amount of speculation as to how much each Local Authority will be charging for the Poll Tax. I have contacted several Community Charge Offices and none have been able to give me a precise figure. They have all stated that it is still too soon to say. It is therefore likely that we will not know how much the charge is until we receive our bills. However I think it is safe to assume that the personal charge for most Imperial College and St Mary's students will be approximately £100 for the year after the 80% reduction.

Payment of the Poll Tax

Bills will be sent at the end of March or beginning of April. You will have the option of paying the whole amount at once or in ten instalments. A payment does not add to the overall cost and avoids the situation of having to claim money back if you move to another area part way through the poll tax year which runs from April 1 to March 31.

Many of you will have been asked whether you would like to pay your poll tax by direct debit or standing order. This is NOT advisable because:

1. Money would be taken out of your account at the same time each month thereby giving you less flexibility with budgeting your expenditure. You may prefer to delay payment for a few days because you are waiting for funds or have other expenses. Remember: banks make higher charges for administering standing orders and direct debits if there are insufficient funds to cover them.
2. In the case of direct debits you would be giving the Local Authority the power to change the amount of the payment at any time without your consent.

The best methods by which to make payment are by cash or cheque through the bank or by post direct to the community charge office. At present there are no arrangements to pay at the Post Office.

Certificates

In order to satisfy the CCRO that you are a full-time student they must have sight of the poll tax certificate that was issued to you when you registered as a student with the College. If your certificate has not been sent to the Local Authority by the time the bills are prepared you will be billed for the full amount of personal charge for your area.

Most students have already been asked to send in their certificates or have presented them of their own accord. If you have not yet sent in your certificate you should do one of the following:

1. Find out where your community charge office is and call in person with the certificate. A member of staff will either photocopy the certificate or make a note that it has been seen.
2. Post the certificate to the community charge office with a letter clearly showing your name and address. It is most important that your address is attached to the certificate as otherwise it will not be possible to link it up with your registration or return the certificate to you. Some Local Authorities will accept photocopies, eg Westminster and Kensington & Chelsea. The other borough in this area, Hammersmith & Fulham, will only accept the original certificate. If you are worried about it being lost in the post then send it Recorded Delivery.
3. If you have not yet registered for Poll Tax in your area then send in your certificate with your registration form.

Your certificate is a valuable document and should be kept throughout your time at College. If, for any reason, it is lost you should contact the Registry where a replacement can be obtained.

In most cases the CCRO will accept your certificate alone as proof that you are a full-time student.

Amount of Poll Tax payable by your partner/spouse

Unless your partner/spouse can also be treated as a full-time student they will be liable for 100% of the personal charge. However if they are not working or are on a low income they will be able to claim Community Charge Benefit. This will be claimed in a similar way to Housing Benefit. Local Authorities have set up separate Community Charge Benefit Sections from which claim forms can be obtained. Many people

have already been sent claim forms, if you think you may qualify for benefit you should obtain a claim form as soon as possible. The maximum amount of community charge benefit payable is 80% of the full charge. For details of how the benefit is calculated see 'Community Charge Benefit'.

NB. Anyone who is a member of a married or unmarried couple will be jointly liable for their own and their partner's Poll Tax. So if your partner decides not to pay you can be pursued for their debt. This rule, however, does not apply to homosexual couples. Parents are not responsible for their son's or daughter's payments even if they are members of the same household.

Community Charge Benefit

The legislation does not allow full-time students to claim community charge benefit to help with the 20% of the personal charge for which they are liable. But as we have already seen their partners/spouses will be entitled.

Overseas students and the poll tax

All overseas students aged 18 and over and their partners/spouses are liable to pay Poll Tax. An overseas visitor in this country for a short period would not have to pay the charge. There is as yet still no definition of what constitutes a short visit although I have been advised that an overseas visitor in this country for less than three months would not have to pay Poll Tax.

All the legislation and administrative arrangements regarding the community charge apply in exactly the same way to overseas students as they do to UK students. If you have recently arrived in the UK you will need to register for Poll Tax and obtain a certificate—see sections 'Registration for Community Charge' and 'Certificates'.

Community Charge Benefit is not classed as public funds and therefore anyone from abroad liable to pay Poll Tax can claim this as long as they are not a full-time student. It therefore follows that if your spouse is not a full-time student, they will be eligible to apply for community charge benefit.

Once you have completed your studies and returned home your liability for poll tax will cease. You should send your Poll Tax payment book together with an explanatory note to your local community charge office. However if you're only going home for a visit or travelling abroad on holiday you will still be liable for Poll Tax during that time.

Changes of circumstances

Although the 'responsible person' at each address has a duty to inform the CCRO of changes regarding occupants in their household there is also a legal requirement for each individual Poll Tax payer to report relevant changes in circumstance. The most likely changes that you will need to report are:

- Change of address
- Ceasing to be a student
- Leaving the UK

You should report the change in writing as you can keep a copy of your letter in case of future queries. If you are not sure whether to report or not, it is best to contact the CCRO first.

Offices

L B Hammersmith & Fulham
8th Floor
Vencourt House,
255 King Street, London W6 9JU
Tel: Poll Tax Helpline 748 2404
Student Section: 748 3020 ext 1507

R B Kensington & Chelsea
Town Hall
Hornton Street, London W8
Tel: Freephone 0800 289772

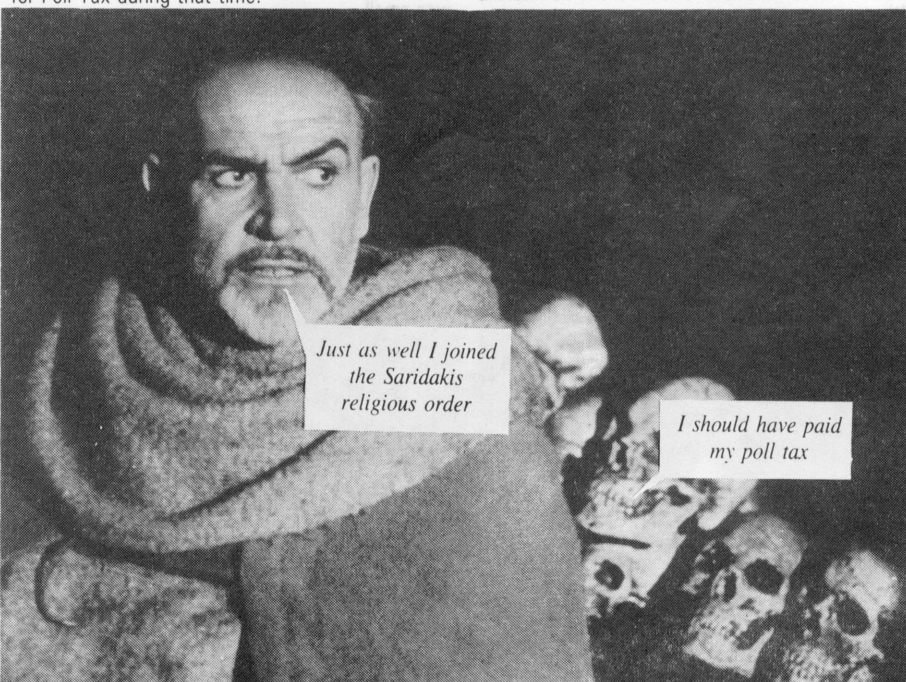
L B Westminster
PO Box 250
London SW1V 1TX (for correspondence)
or
Chester Gate House
Vauxhall Bridge Road (for calls in person)
London SW1
Tel: 537 2520/2421

Acknowledgements

Thanks to the following, who provided information for this article: Kensington & Chelsea, Hammersmith & Fulham and Westminster Community Charge Offices; UCKOSA News Adviser's Briefing, February 1990; Students and the Community Charge, Department of Environment Practice Note.

STOP PRESS.....

Westminster Borough Council has announced a Poll Tax of £195 which amounts to £39 per annum at the student rate of 20%.



*Just as well I joined
the Saridakis
religious order*

*I should have paid
my poll tax*

Members of a religious order are exempt from paying poll tax

FELIX on food

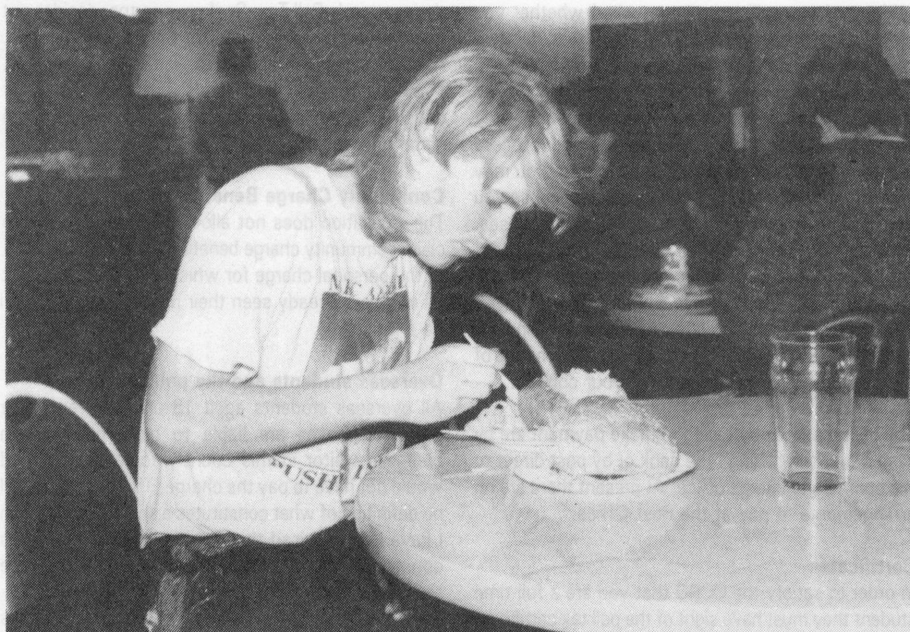
Compiled and photographed by Roland Flowerdew and Richard Eyers.

Introduction

In response to an ad in FELIX (2nd Feb), two first year students, Colin and Liz from Mech Eng, reviewed five IC food outlets last week. They had no previous association with FELIX or the Union.

They were given £2 each per day, and separately visited one outlet, chosen at random, each day. They were asked to comment on the appearance of the place they visited, how long they had to wait, what they bought and how much it came to. The only restriction on what they chose was that the total should be less than £2, and they should not choose the same as each other at a particular outlet.

Regarding the food itself, they were asked to comment on quantity and quality, and finally on value for money. The aim throughout has been to provide constructive and objective criticism on an impartial basis. Colin and Liz were trailed by FELIX photographers, but did not make contact with them until the food had been bought, and so should have been treated as normal students. Finally, the managers were invited to comment upon the reviews.



Main dining hall

Appearance

The MDR was reasonably clean, although dirty plates were left on the tables. The kitchen looked clean, food being prepared on plates in advance. The atmosphere was rather like a canteen, and the staff appeared interested in what they were doing. Colin said the place 'was very busy, and I only just got a seat'. Liz said it was 'not used by many students when I was in'.

The main criticism was that the cutlery appeared dirty.

Food

Liz bought (without having to wait), bacon, sausage, tomato and chips, and a can of Coke, for £1.60. 'Some of the food looked as though it had been sitting

around for ages, and it wasn't particularly hot,' this was at 1.30pm. Of the food she said; 'the portion of chips given was fairly large, but the rest wasn't very big. It was all a bit greasy.'

Colin also did not have to wait, and he chose chilli, rice and chips, and Angel Delight dessert, costing £1.99. He said the chips were 'very good', the rice was 'OK', but the chilli was 'a little mushy,' the individual portions were 'generous,' but the selection was small.

Value

Colin said 'quite good, especially if prepared to spend. It is no good for snacks.' Liz thought the value was only reasonable.



QT

Appearance

QT was kept very clean, and was constantly being tidied. The kitchen seemed clean. QT is situated in a large room, with plenty of seats, the availability of which depends very much on the time you go. Colin said 'the seats are very nice to sit in over a lunchtime.'

The staff in general were not friendly or communicative, and the appearance of a photographer gave rise to a lot of dirty looks. Colin said the staff 'don't say anything', and the cashier 'just put his hand out expecting money to be put into it.' Liz said it was a 'very help yourself' atmosphere.

They both said that prices were not clearly marked and it was difficult to choose within a budget.

Food

Liz chose crisps, diet Pepsi, ham roll and a walnut slice, the total came to £1.60. She said 'the roll was stodgy, but the walnut slice was nice and gooey.' She complained about the roll, taking it back. The staff were polite but passed her around; eventually the roll was exchanged. She queued for five minutes.

Colin chose an Imperial burger, a can and hot apple pie, which came to £1.85. He waited about two minutes. He was particularly critical of QT's own food: 'the burger was horrible, the salad was all droopy, the mayonnaise was tasteless, and the actual meat was not cooked properly. The apple pie was the same as the McDonalds/Wimpy sort, and although small, tasted nice.'

Value

Liz thought it was 'quite good value for money, and you could get a reasonable quantity for £2'.

Colin was unimpressed—'this definitely wasn't good value at all.'

From these comments it seems that the pre-packed food is much better than QT's own.

Gardens

Appearance

The outlet was clean and light, and had a generally pleasant atmosphere. The kitchen seemed clean, but the staff were abrupt and uncommunicative. The clientele appeared to be mainly College staff rather than students. Again, there was no problem with the seating, but the seats were awkward because 'you have to clamber over to get into them'.

Food

Colin bought spare ribs, chips and veg, costing £1.94. He had to wait 5 minutes. The food was 'OK—edible', and the portion he got was reasonable, although the spare ribs turned out to be mostly bone. 'You cannot buy a dessert as well without spending more than £2.' It was not apparent whether smoking is allowed.

Liz bought fish in cheese sauce, potatoes and sweetcorn, with orange juice, totalling £1.97. She said 'the food was nice although the vegetables were a bit overdone and soggy. All the food looked good, with a choice of about five different things and with a selection of vegetables and puddings. I didn't have to wait at all.'

Value

Colin said there was 'not enough food for the money,' and he was still hungry. Liz said it was 'a bit pricy'. We felt that you could get a good meal from here, for under £3.



Liz tries a pizza in Belushis

Belushis

Appearance

Belushis seemed to be slightly run down and scruffy, but the general atmosphere was good. The staff were mainly students and were friendly. Hygiene was reasonable, although one staff member was seen stirring topping around with his fingers. There was no problem with seating.

Food

Colin bought a baked potato and a roll: total £1.87, after waiting 15 minutes. The potato was slightly overdone, but the salad and cheese were fresh.

Liz bought a 6½" pizza with three toppings for £1.80, waiting 15 minutes. She was unable to buy a drink as well with her £2. 'Very tasty although a little greasy, but the plastic knife and fork are inadequate if used. The pizza was small for its price and no desserts were available.'

Value

Colin: Good value for money, mainly due to the quantity available.

Liz: Reasonable.

MANAGERS' COMMENTS

We asked Rob Northey (Catering and Conference Manager) to comment on this review. He thought that it was 'not as bad as it could have been', and that the review was 'fair and objective'. He said that the main problem with QT is that it handles far more business than it was designed for (averaging 2,500 transactions on a busy day), and because of this volume, food has to be made in advance and inevitably the quality suffers. Of the MDH, he said that if staff were employed to clear plates then prices would have to rise to pay them: the system is supposed to be self-clearing. He also said that compared with prices outside, the College catering costs were very reasonable, partly because term-time catering is subsidised by conferences.

Mr Dave Williams (IC Union Deputy President) said that last week was the introduction of the new system in the Union Snack Bar, and that they were surprised by the number of people buying from them. 'I'm pleased that people thought that overall it was good value,' he said. The paying system has been revised (Liz's comment), and drinks can be bought from the vending machine outside. He suggested that people buy freshly made rolls during the morning, and take them away for later consumption, thus avoiding the lunch-time rush.

CONCLUSION

As can be seen from Liz and Colin's comments, the quality of food available from these five outlets is variable and none of them are good in all respects. It seems that places predominantly staffed by students have a friendlier atmosphere, and treat their customers as people rather than automatons. They also tend to be cheaper, but not as efficient at keeping the eating area free of dirty plates and litter. Places with non-student staff tend to be more expensive, but provide better food.

Because these outlets aim to meet different requirements, it would be unfair to place them in any order, so we have listed the places we would choose if we wanted:

Cheap and filling lunch:	Belushis, Snack Bar
Rolls:	Snack Bar
Dinner (budget)	Main Dining Room
Dinner:	The Gardens
Take-away:	QT prepacked
'Healthy option':	Snack Bar

Union snack bar



Appearance

Liz and Colin both said that the Snack Bar was 'messy, rubbish and trays were left on the tables, but the kitchen area appeared to be clean.' The staff (mainly students) were friendly and helpful. Despite the no smoking signs, lots of people in the Snack Bar were smoking. Seating was in short supply except towards 1.30pm.

Food

Liz had to wait 25 minutes before getting a roll with cottage cheese and salad, a doughnut and a can of coke, £1.55. No diet drinks were available. She said that 'the roll was nice and tasted fresh, being made up while you wait. There was plenty of filling, but the doughnut was small for 35p.'

Colin also had to wait, this time for 20 minutes. He bought a veggie burger in a bun and chips, treacle roll

and custard, and a can of Coke, £1.95. He thought 'the chips weren't cooked enough and were a bit greasy, and the veggie-burger didn't taste particularly nice. The treacle roll was solid, but the custard was good.' He added that 'the portions were a reasonable size'.

Value

Liz thought that the value was good and, although making sandwiches up to order takes more time, it is a good idea because you can choose exactly which filling you want. However, she said that the system of paying was silly (one till for sandwiches and one for others) because 'if you want a roll and something else it completely throws the staff'.

Colin said 'if the food was good, it would have been good value.'

Clare Davis describes the Government's new road improvement scheme and its effect on homes and the environment.

Roads to nowhere

It seems as though no part of London will be safe from Mr Parkinson's newest baby—the Red Routes road 'improvement' scheme.

Speaking at a recent Envirosoc lecture, John Stewart from Capital Transport Campaign described why the scheme will do nothing to tackle congestion in London.

The tactics of the Transport Minister have been odd to say the least. His Commons speech on the issue mainly dealt with minor plans for Public Transport, with the scheme's true scale and impact being played down. Equally confusing is the booklet detailing the plans, produced by Sir William Halcrow, amongst others. This attempt at glossing over the issue is hardly surprising, however, when what is really being proposed is the most massive road building scheme since the Second World War.

Facts given by Mr Parkinson are that spending on road construction will be up by 40% next year and over the next three years a total of around £12 billion is to be spent on roads locally and nationally.

For London the scale of the plans is frightening. The major schemes include widening the south circular between Kew and Clapham or a tunnel link between Chiswick and Wandsworth; the amusingly named Western Environmental Improvement Road (WEIR) from Shepherds Bush to Wandsworth; major demolition of property between Clapham and Eltham to widen the existing South Circular, and more demolition between Kings Cross and Aldgate to name but a few of the potentially affected areas.

Effects on local communities will be far reaching. A foretaste of what is to come for people as far apart as Chiswick and Kings Cross is the present situation in Leytonstone. Hundreds of people here may lose their homes in the construction of the new M11 link from Wanstead to Hackney Wick, but the public inquiry may only be given three weeks.

The road plans, of which the Red Routes scheme is just a part, have followed a consultation period of just two months. They seem out of date at a time when our European competitors, ie France and Germany, have realised that the more roads you build the more traffic jams result, as people who previously would have left their cars at home for the journey to work, now race to clog up the latest A-road or motorway.

A recent Gallup survey shows that 82% of Londoners favour some kind of traffic restraint measures and 79% of drivers feel the same. So why, in the light of all this unpopularity is the roads option being pushed so hard? Two of the most probable driving forces behind the decision are the Roads Lobby and 1992. Hardly a week goes by without MPs receiving mail from bodies with an interest in road transport. They are undoubtedly a very powerful campaigning force, including not only construction companies but motor manufacturers, road freight services, the AA and RAC etc. The approach of 1992 has sparked many rows over freight and passenger transport links with Europe, but all of them whether rail or road, will require fast passage across London. Capital Transport Campaign believe that London is to be boxed in by 'fast' roads in preparation for this. If this is true then the Government's logic must be questioned because roads are the most expensive option Mr Parkinson could have chosen; the estimated cost of building a new road in London is about £40 million per mile.

For the local communities of South London a much better alternative would be to reinstate the myriad of disused rail lines in existence South of the river which could be done at a fraction of the cost of the South Circular 'improvements'. However forty years of disinvestment has left British Rail and London Regional Transport unwilling to take imaginative risks such as these, especially when proposals for desperately needed, major cross-London rail links are brushed aside in favour of Mr Parkinson's expensive, polluting brain-child.

So, apart from the orbital rail links already mentioned, what does the Capital Transport Campaign propose instead? To coin a cliché, there are four 'green' ways to travel; walking, cycling, bus and train. Walking is the universal mode of transport and cycling is nothing new to most students and plenty of commuters too, but at the moment it is either frustrating, hair-raising, or both.

It goes without saying that more cycle lanes are needed, but the problem is such items such as cycle lanes, widening pavements, improving junctions for pedestrians and planting trees etc is the responsibility of the local councils. No extra cash is made available after a spree of road building, so the councils rarely provide these 'traffic calming' measures.

A better bus service could help immensely. In 1960 46% of Londoners travelled to work by bus compared with 15% today. Most bus routes haven't changed since the 1960's and are very much out of date in today's city. A comprehensive system of bus lanes (possible as most buses travel on wide roads), and a system by which buses could change traffic lights to green as they approach them, have also been suggested.

More controversial ideas have tackled clamping and company cars. Around 80% of rush hour traffic is made up of company cars. CTC believe companies should be encouraged to buy travel season tickets instead, but of course this suggestion has not proved

popular as it does not provide freedom of travel for families at weekends.

It is obvious that something has to be done soon to ease the traffic chaos in London. The utopian post-war dream of every adult in the country owning a car can never happen. We have to change our ideas about how often we use a car, not necessarily give them up, but first we need a reliable alternative—spending billions on roads won't solve anything except, perhaps to line the pockets of big investors.

If you want to do something positive then give up five minutes of your time on Thursday 22 February (at the Caterpillar Café) or Friday 23 (JCR) to sign a letter, or write your own. Addresses to send them to are:

Department of Transport,
East London Assessment Study,
PO Box 2BX, London W1A 2BX

Department of Transport,
South Circular Assessment Study,
PO Box 29, London WC2E 9SJ.

Department of Transport,
West London Assessment Study,
PO Box 1465, London W6 7HN.

Department of Transport,
South London Assessment Study,
PO Box 309, Croydon CR9 2XW.

In any letter to the above state that you are making a formal objection to the road building and widening schemes proposed, and would like to see resources diverted into public transport improvements—don't forget to mention reasons such as air pollution, destruction of homes and the green belt. Ask to be kept informed of future developments. GOOD LUCK.

Clare Davis, Geol 3.

ENVIRONMENT WEEK '90

Imperial College Union's Environment Week this year is between 19th - 23rd February. Run by ENVIROSOC, this event hopes to educate and inform students of Environmental issues, both at home and worldwide.

Lectures

MONDAY

No Growth Economics

Ben Schoendorff from the Green Party will be speaking on 'From Growth Economics to Green Economics'

WEDNESDAY

Cycling in London

Elizabeth Pitman, from the London Cycling Campaign, taking a wry look at cycling in London, the Department of Transport's attitude to it, and what the LCC does to help. Copies to the Cyclists Handbook 'Cycling in London' will be available at the lecture.

All lectures are **FREE** and start at **12.45pm** in **MECH ENG 542**

Letter Writing

THURSDAY - Caterpillar Cafe

FRIDAY - JCR

The Government is planning a major road building scheme, write in and register your opinion, before your house is demolished too for a new road! Between 12-2pm

Video Night

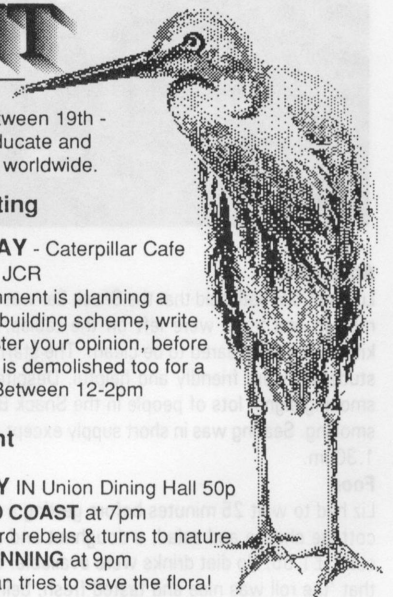
TUESDAY IN Union Dining Hall 50p

MOSQUITO COAST at 7pm

Harrison Ford rebels & turns to nature

SILENT RUNNING at 9pm

SF: One man tries to save the flora!



Dance in Florida

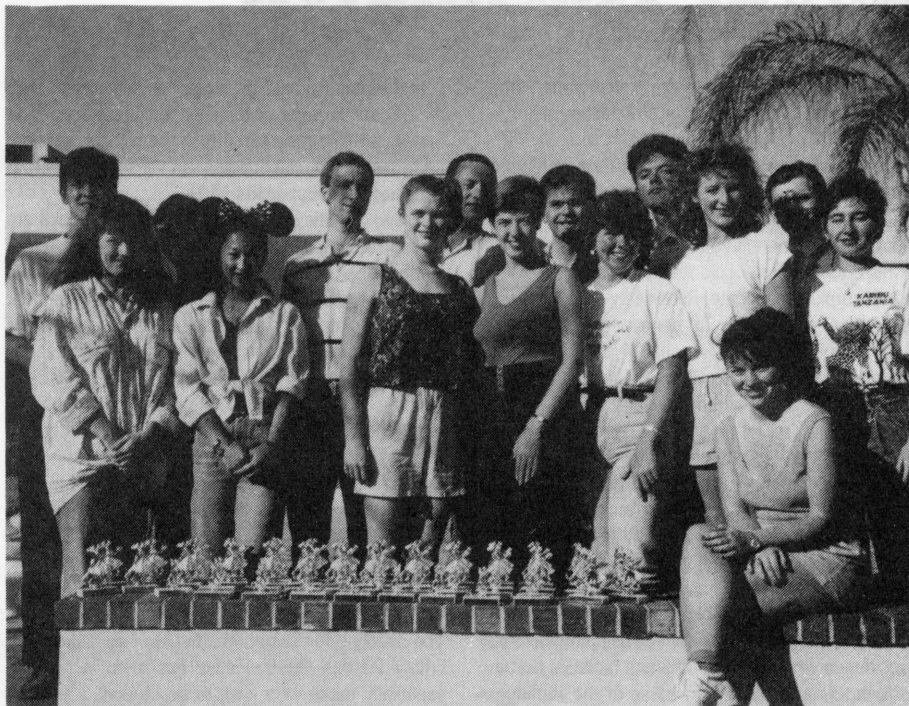
Imperial College Dance Club's trip to Florida in January was great fun. About twenty universities were competing, some British, but mostly American. Teams of four couples were required. Since we only had seven, Oxford kindly lent us one of their worst couples who consistently failed to get past the first rounds. Nevertheless, Imperial College waltzed away with 56 out of a maximum of 120 possible trophies (these were awarded for 1st, 2nd, and 3rd places only).

One of the American universities had many couples, all with the same routines and amused us by swapping partners for different competitions. It was just as well that our coach Victoria Conniffe had taken the trouble to tailor our routines to each individual couple because it would have been really embarrassing for the 6th couple to do an unknown formation dance when we had five out of six couples in one Jive final.

It must be conceded that Brigham Young university were notable for their absence. Some of their students do degrees in dance. Their reputation as relayed to us by Oxford coach at Heathrow airport had caused some alarm, but after the first competition which Oxford surprisingly won, we discovered that Brigham Young were not in fact present. Following this dirty trick from Oxford, Imperial rapidly regained composure and came top in all subsequent team competitions. Next time, friendly advice from Oxford will be treated with the disdain it deserves.

Some of us believe that Cambridge's mysterious absence was also due to Oxford's desire to win, but some of us do not rate Oxford so highly. Since Cambridge's coach was in fact spotted in Florida, the discerning reader might deduce that Cambridge needed a touch of Vicky's choreography. (Cambridge's inadequacy was amply demonstrated in Sheffield last weekend when Imperial slaughtered them 46 points to 45 in the first team competitions of this year.)

The programme laid on for us was exhausting, but



for those of us who have a fetish for pancakes drowned in maple syrup their generous supply at breakfast times made the whole trip worthwhile.

It is two years before the Americans are likely to be holding this event again. It is obviously an advantage to have a left foot and a right foot, but Vicky has the ability to get beginners into the winning streak and so you too could find yourself dancing away to Florida (some of the Imperial team couples were beginners in October).

If our lifestyle appeals to you (going to America during term-time enjoying subsidised travel, and

Disneyworld first hand), why not try out for the team in the trials next year. The Dance Club is really on the ball regarding social dancing too, so if you don't fancy yourself in the team, how about some Lambada?

Many thanks to the Rector, the Union, the American universities for financial support. Also to our accommodating lecturers and to our self-sacrificing president, Mandy, who made many of the arrangements but was unfortunately unable to come with us. We also appreciate the spadework put in by the team members and of course our team coach who did more than we could give her credit for.

Good value Champagne

This Tuesday's tasting was even more romantic than anticipated as our Valentine's Eve Champagne and Sparkling Wine special was interrupted by the Guild's Valentine squad serenading one of the attendees.

Hilary Mason of Wizard Wine, who has a confessed weakness for Champagne, returned to Imperial to give her second terrific tasting. Hilary shared with us Champagne anecdotes and some of her considerable knowledge and experience of wine. She also painted evocative scenes of wizened experts in deep chalk caves (of constant temperature and humidity) deftly twisting bottle upon bottle of fermenting champagne.

We started the tasting with a modest but tasty Sarda Cava Brut for £3.99; a Champagne-method wine from Penedes, Spain and ended with a superlative Asti Spumante from Fontanafredda for £5.59 to demonstrate that this style doesn't only produce sickly-sweet fizzy wines. The favourite wine

of the evening was one of the Champagnes: the Taittinger non-vintage Brut (£13.95) which had a fresh and honeyed flavour and great bubbles. This was closely followed in popularity by the more expensive Moet and Chandon '83 vintage 'Brut Imperial' at £17.95—a very classy Champagne. All in all a very good tasting, many thanks to Hilary and Wizard Wine.

For our next tasting we are lucky to have Moreno Wines, a high-quality independent importer of Spanish wines, to come and give us a tasting. Other dates for your diary should include the Australian wine tasting (27 Feb), the coffee tasting (1 March) and the Sherry tasting (6 March).

SANTÉ

P.S. Only a few places remain on the 21 March booze cruise so get in touch with Lynda Matthews if you want to come along.

Opera

On Tuesday March 20 Imperial College Operatic Society presents: An evening of music by Cole Porter.

The show contains some of the best songs of the 'musical' genre such as *I Get a Kick out of You*, *Night and Day*, *You're the Tops*, *I've Got you Under my Skin*, *Be a Clown*, *Who Wants to be a Millionaire?* from shows like *Anything Goes*, *Kiss me Kate* and *Can-Can*. This should be a really good show, so why not be in it? You don't have to have the world's greatest voice, we can make anyone sing! There are plenty of chorus numbers in the show and we don't ask people to audition for the chorus but if you feel that you might like to step into the spotlight we shall be auditioning on Sunday February 25 in the Union Concert Hall from 2pm onwards, otherwise we hope to see you for our first rehearsal in the Read Lecture Theatre (5th Floor, Sheffield) at 7.30pm on Tuesday February 7.

Student theatre and music-making of all types is one of the most enjoyable and rewarding parts of one's university career, don't miss out on it.

For further information phone Sue Foister on extension 7406.

Neil's not happy about Harlington

Belated Valentine's greeting to everyone. Hope everyone had a good time on Wednesday night.

Accommodation and Harlington Gravel Monies

You may wonder why I've put these two issues together. Last week a letter landed on my desk stating that St Mary's were involved in a deal involving their tennis courts which could result in them having £½ million surplus to allocate. Reportedly the students of St Mary's are willing to donate this to the St Mary's/Imperial Merger Appeal if students of IC donate a comparable sum. Sir Eric Ash has suggested £½ million would be appropriate and that the money should come from the gravel extraction down at Harlington. Many of you will not know the history of Harlington, a feature article on Harlington in next week's FELIX will, however, explain all.

Firstly, I have yet to find out whether it was actually the students at St Mary's who requested this or whether that was a story concocted by the Rector as an attempted emotional blackmail. Secondly, I think it is wrong of the Rector to try and use monies to buy a residence when it is the athletics facilities that are suffering as a result. As a trustee of the Harlington Gravel money I will be dead set against buying a new hall of residence with the monies on a number of grounds:

1. The extraction of the gravel has seriously reduced the athletics facilities at Harlington and will do so until the extraction is finished (another two years).
2. The extraction of the gravel has deteriorated the quality of the playing surfaces at Harlington.
3. Imperial College is severely under-resourced when it comes to sports and athletics facilities.
4. Imperial College does not maintain its present stock of housing adequately enough already. What hope has it with increased stocks?
5. Is it a hall of residence the students want? First years may want halls of residence, it is more likely that second, third, fourth year undergraduates and

postgraduates would prefer either assistance with their housing costs or cheaper facilities/services at College so that they can afford the private housing.

Alternative Prospectus (AP)

As Dave Smedley said in last week's FELIX we are hoping to compile and distribute this over Easter. A number of enquiries from prospective students have included requests for details on living costs in London. The full Alternative Prospectus of last year concentrated on departments, the AP update will concentrate on services and living costs. Anybody wishing to comment on any issue such as accommodation, nightlife, welfare services, refectory services, athletics facilities, etc please write to myself or David Smedley. All contributions will be kept anonymous. I hope the Rector gets his act together and decides the rents for the halls as these will be one part of the AP update.

Transport

The deadline for Easter vacation van applications is Friday 23 Feb 1990. Please get them in on time especially those who wish to go abroad.

External Affairs

Loans: The loans bill will have come up for discussion yesterday. I will not have attended the NUS march but I will have been to the House of Commons to listen to the debate. More next week.

Poll Tax: Watch out for feature articles in FELIX on the Poll Tax. This week facts and figures, next week 'why to evade it and how to evade it'. This is coupled with a two day campaign next Thursday and Friday in the JCR. 11.30am to 2.00pm.

Union General Meetings

There will be an EGM on Thursday 22 February, at 1pm in the JCR to discuss ICU transport subsidy policy.

Rag Week II

Following on with the 'if it's a good idea do it again' theory, the next two biggest Rag events are the Hypnosis Lecture tonight and Monopoly all around London tomorrow. Doors will open at 7.00pm tonight for the Hypnosis Lecture which will be Martin Taylor's fascinating combination of talk and demonstration on hypnotism—an evening's entertainment for only £2.50 so not to be missed.

Rag are very happy to present a day of fun and hilarity absolutely FREE we will be playing Monopoly all over London, in teams of 4-6, fancy dress is almost essential if you want to stand a chance of winning some of the fabulously alcoholic prizes on offer. Monopoly will be in aid of the British Institute for Brain Injured Children which is one of our chosen charities this year.

Hon Sec

Sabbatical Elections

Papers are now up for sabbatical elections; President, Deputy President, FELIX Editor and Honorary Secretary (Events). Candidates must have a proposer and 20 seconders by 5.30pm on Friday February 23 when papers come down. Anyone wanting to sign up should do so on the Union noticeboard (just below the Union Office). Please come and see me for job descriptions, publicity and election rules and other papers.

Other Elections

On February 22 papers go up for the following posts:

- Academic Affairs Officer
- External Affairs Officer
- Welfare Officer
- Internal Services Officer
- Rag Chairman
- Ents Chairman
- ICCAG Chairman
- UGM Chairman

Elections for these will take place at the UGM on March 8.

Good luck to everyone!

Fiona.

**THE UNION
WILL PAY YOU
£2.50 per hour**

**for sitting next to the
ballot boxes on
March 5th and 6th
See Jen in the Union Office**

MANIFESTOS

Candidates must hand in their manifestos by 9.30am Monday 26th Feb. There is a maximum of 300 words. Any manifesto longer than this will be cut at the 300th word. Candidates should also submit a photograph of themselves (any size of photo will be accepted). Manifestos will be printed as submitted including any spelling mistakes etc. Any material submitted after this deadline will be burnt in front of the candidate in question.

Hockey

After an excellent quarter final with Sheffield, IC 3rd Hockey team moved into the unknown territory of the semi-finals, a clash with Bristol beckoned.

The first half began with Bristol's strong possession play holding IC's quick breaking style at bay. The first half remained goalless with both sides having chances to go ahead.

With the effort increased and the legs tiring, gaps opened and so did the play. Short corners on both sides were not capitalised on but Bristol, after ten minutes of sustained pressure, broke the deadlock with a powerful short corner. Literally minutes later Bristol broke again and scored with IC still stunned from the previous goal.

With the score at 2-0, IC increased the pressure for an opening and in the last minute received a penalty flick, which Ian McGovern slotted home.

The final score of 2-1 left IC in no way disgraced as the first team in IC history to reach a team UAU semi-final. It is a shame that the powers-that-be ignore sport in general at this College when the participants gain so much benefit from it.



Guilds rugby

Preparations for the 1990 City and Guilds RFC tour to Paris began in earnest on the evening of February 2. Team members met in the Queens Arms for the compulsory consumption of the elixir that was to sustain us throughout the forthcoming ordeal. Adjourning to the charming surround of the Union Snack Bar we were introduced to Nelson, our enigmatic and cuddly tour mascot. Could it be that his permanent grimace foretold of the riotous weekend that he was about to witness?

Could it also have been that Providence was trying His best to prevent Imperial's single handed attempt to hinder the already precarious road towards a single Europe? But, alas to no avail. The hurricanes and ferry cancellations couldn't prevent the team leaving Victoria, somewhat belatedly, and arriving at Dover to connect with the packed ferry. The unlucky passengers of the ferry were confronted with hoards of rugby supporters singing in unison. Needless to say most people were unable to sleep during the short crossing.

Similarly, on the train from Calais to Paris, sleep was foresaken for song: most of our new found friends



joining in. On arrival the weary team was whisked away by our hosts, L'Ecole Polytechnique, to their spacious campus at Palaiseau. Using an old tactic designed to tire and demoralise, our opponents led us around aimlessly whilst we still carried our luggage and then hastily served us breakfast out of a cardboard box. Within 30 minutes we were on the field playing.

Guilds emerged winners after a hard fought battle. The final score, 4-0, didn't do justice to an exciting and well played game. Our only score came from Andy Godbhere's opportunist kick and follow through. The high winds made goal kicking almost impossible, especially so in the second half. Towards the end of the match team members were starting to show signs of fatigue, a factor that will be very important if Guilds want to win this year's Sparks Cup.

Polytechnique, with their usual hospitality, provided us with a magnificent lunch, which lead us up nicely to watch the England versus France match live in their Union. England's convincing victory over the French crowned the tour perfectly well, for us anyway.

Cross country

The rain drove down, the gales roared. Hurricane conditions forced the cancellation of many a sporting contest, Feb 7, but it takes more than this to repress the unswerving dedication of the true Harrier. The beleaguered IC Cross Country Team took up the challenge of Richmond Park, as its fated quest for the London Colleges League Title reached the penultimate stage.

With the established vanguard of the Club executive reduced to a purely spectating role, it was down to the fresh blood of the first years to ensure the continuing survival of the flagging IC challenge. Once again Paul Northrop stormed around to achieve a third place in the race and retain his leadership of the overall

individuals table. Dave Knight, in his last cross country race for the College, finally made the top twenty, with a characteristic surging second lap. Solid support was provided by Laurence Fowkes, Bill Skilles and Jim Watson, all of whom ran to form. At this stage of the season, every point scored counts, and the sight of Skilles overtaking five men in the last fifty metres was a sight for sore eyes. A similar performance at the last league race will ensure medals for the boys, meanwhile we must take responsibility for the large numbers of athletic bodies which will be populating IC this weekend, as the 42nd Hyde Park Relay gets underway.

Pistol

IC - 713

Cambridge - 720

After a closely fought match, IC lost by a margin of 7 points. Special mention must be made of James Hurr who shot an incredibly bad score of 227/300. This has been explained by the fact that he has no shooting ability whatsoever. Simon Taylor, who had never shot in a pistol match before, achieved 233/300. Tim Griffiths scored 250/300, the highest score of the match.

Our next match is on Sunday, when we will quite definitely beat Cambridge and Leeds. As Nigel Lawson would say 'The last match was only a blip'.

The Calumny Column

by Carolyn Toynbee

Southside Bar is a marvellous place to pick up gossip. Last Monday night, early evening drinkers were delighted to hear the life story of one Cathy Harrison, a third year Chemist. All the staff on the Calumny Column wish Ms Harrison, 21, much happiness in her impending marriage on July 11 to Adam. We are also relieved to find that Cathy is not waiting until after her wedding to experience the wonders of human lovemaking. The physical knot was tied between Ms Harrison and her fiancé four weeks after they met. The marriage, in Ireland is expected to be a large family affair.

News from the recent Eric Clapton concert at the Albert Hall. The support band were wetting themselves in merriment when told of two attendees who got rather excited. A couple were thrown out after being caught in flagrante delicto. One lady complained about the man and woman next to her who were performing an act which is popularly known as a 'blow-job'.

Southside Bar casual Robin Keyte was seen carrying out his duties on Monday night with a sign festooned on his back. It read 'Smooth and Slippery'. Whatever can this mean? The usual fiver for information.

Quote from the Union Bar last week: On entering and spying the bar full of RCS hacks, the observer was heard to say, "This is a real gynaecological lesson. Obviously cunts come in all shapes and sizes".

Felix printer and part-time chanteur, Andrew McThompson has obviously had a lot on his mind lately. In his tedious little life, even the slightest bit of excitement is called for. Two weeks ago, he hurried home from the Union Bar to interview a 'shit-hot drumming moonlighting taxi driver'. He never showed up. Last week he hurried home to meet some members of his band. They were all rat-arsed when he got there. This week, he couldn't come into work because he had locked himself into his flat. He ended up climbing onto the roof to get in. Felix staff eagerly await what next week holds in store for him.

The annual RSM Camborne trek came round again last weekend. Two events are worthy of mention. Firstly, on being smashed 6-4 in the rugby, team captain Eddie Gadd took his side's loss to heart. Suffering from hallucinations, he telephoned the local

press to inform them that, in fact, Imperial had won 13-8. The boys from the Camborne Press were later told the correct score. Secondly, spare a thought for the poor member of the football team who does not know the difference between a lavatory and a jacuzzi. Makes a change from crapping in the bidet I suppose...

Mr Ulric Davies was gainfully employed over the Summer as a cleaner. After one hour in work, Mr Davies become rather disgruntled and left. His pay packet contained a hard one hour's toil and he promptly left the college employment. All was quiet until Union President Neil McCluskey allocated the bonuses for staff. Included in the list was one Ulric Davies. The bonus? £30. Unluckily for Mr Davies, Pat Baker, the eagle-eyed union typist, weeded out the rogue payment in time.

Neil McCluskey obviously doesn't like St Mary's anymore. On Monday, acting as chauffeur for their exec, he seemed very unsure of the way from ULU in Malet Street to Wilson House in Paddington. Such was his uncertainty that he mounted the pavement in a union minibus and attempted to ram a lamp-post. The medical students, troubled by this apparent murder attempt, protested vehemently but their cries went unheard.

Rumours are still spreading on the question of the Beit Arch nightsafe. The safe was removed last year when security staff complained that its presence endangered the staff manning Beit Arch. The word is that the safe is now part of the foundations of the new carpark outside the Biochemistry building. Nobody is sure of the contents, but....

The phantom TV thrower of Beit Hall is nearing his end. The nutter who threw a television and a shopping trolley from the roof of Beit Hall is rumoured to have videoed the while episode. It can't be too difficult to locate a resident with a video camera and two video recorders in his room. The one hitch is that the offending tape is lodged amongst a collection of 200 such tapes.

Finally just a hunch that the activities of two college-based companies, namely Doghouse Leisure and Imperial Activities may be brought more into the public domain in the next few weeks...

Small Ads

ADVERTISE IN THE FELIX SMALL ADS SECTION
FREE IF YOU ARE A MEMBER OF IMPERIAL
COLLEGE UNION

ANNOUNCEMENTS

● **Jewish Society** will be meeting on Tuesday 20 Feb at 1.30pm in the Clubs Committee Room (top floor, Union Building). Rabbi Gershon Overlander will be speaking about 'Intermarriage'. Everyone welcome. Contact Andrew Preston (Maths 1) for details.

● **Postgraduate women:** Do you ever wonder where all the PG women at Imperial are? Find out over lunch on Fridays at 12.30pm in the Clubs Committee Room, 3rd Floor Union Building. Bring your sandwiches.

● **Want** to have your tennis racquet cheaply restrung—£6 for normal synthetic strings? Contact Carl Edwards on internal ext 6418.

● **Rag Raid** to Bedford on Sat 24 Feb. Meet 10am in Beit Quad. Sign up in Union Office or at Rag Meeting (Fridays 12.30pm Union Lounge).

FOR SALE

● **Honda** CG125, V reg, good condition, taxed and tested. Very reliable. A bargain at £195. Phone Pete on 563 0261 (flat 137) Hammersmith.

PERSONAL

● **To My** film stars: Come and watch my strut in action, Friday Nite and maybe I'll give you a show to remember, later in my birthday suit! All my love Ajay (Physics 3).

● **To the** man who acquired a brown wallet from a black leather jacket on Friday from the 6th Floor of concrete labs in RSM. Please return anonymously via internal mail to the labs. The wallet is full of sentimental values. Thank you.

● **Phallixword:** Bank! (Manic Swivel)—The Last Main Block.

● **Crave!**

● **Phallixword:** The Last Main Block will diverge to ride Jim's prescient comet the way junkies crave. Remember Joanie revenge is sweet. TLMB.

● **Phallixword:** Solving the crytogo has a derisive appeal. TLMB.

● **Bacon Rasha?** Naah, just an old cow.

● **Congratulations** on saving the world single-heartedly Tanveer—our hero! Love—your fans in Physics 3.

HARLINGTON SCREW-UPS
present

NEW! Graveloturf

Now you too can experience the true sensation of playing on a real gravel surface. Thoroughly approved by Imperial College, this new surface has two great advantages. It makes money and, err, it makes money.

Harlington Sports Ground—'one of the finest areas of gravel in central London' (quote GBH 1990)



F·e·l·i·X

Afro-Caribbean Society

On reflection, I regret the inclusion of the phrase 'Afro-Carib Drug Frenzy' in last week's Whats On. I have apologised to the society and its members in a letter and there is a formal apology in the whats on page this week. I have no regrets over the news story or editorial, however.

This week's FELIX contains a number of letters on the subject of the Afro-Caribbean Disco and its coverage in FELIX. I accept some of the points contained within them but not all of them. I found the views of A Jegede and B Brito disturbing. To say that people should hand in their valuables if they go to an Afro-Caribbean Disco or they will pay 'the consequences' is tantamount to condoning mugging. A group which organises an event is responsible for the safety of those attending. A Jegede and B Brito have shown an irresponsible attitude which I find abhorrent and beneath contempt.

The President of Afroc has taken a blind-eyed approach to the subject. He still refuses to condemn the violence at the event in question and seems happy to deny that anything illegal ever took place. Now he has used this week's International Night as a chance for blackmailing the Union into allowing further room bookings for Afroc. Afro-Caribbean Society threatened to pull out of International Night last Friday and have been out to get all they can from the

situation ever since. The Union is wrong to have backed down in this way. There will be an Afro-Caribbean Disco at International night, tonight but Union Card checks will be enforced.

Harlington

It is a long time since the conniving git award was made. This week has seen the honour fall upon Sir Eric Ash for the third time. I now intend to acquire a small trophy and have it engraved. As a three times winner, Sir Eric will now have the honour of keeping the award.

Sir Eric has seen fit to try and dip his hands into the Harlington Trust for the purposes of residences. It would seem that he has made a deal with the Dean of St Mary's with money which belongs to the students of Imperial College Union. Of course, his memory is blurred on the exact details (his age you know), but it seems that the students at St Mary's have offered £ 1/2 million towards the cost of a new hall. Well that's what Prof Richards said, or something like that. Funnily enough, it's not what the St Mary's student Union said. I just wish I had the power to play around with so much of other people's money.

The question of the hockey pitches at Harlington may be related to this. Perhaps a stop has been placed on the plans to help pay for this new hall. What is certain is that Imperial College's Hockey players will not have anywhere to play next year. The quotes obtained by the college now seem to be for a new Wembley Stadium at Harlington, rather than an Astroturf pitch. Either the College has employed a two year old clown who can't count to obtain quotes for this work, or they have obtained excessively high quotes in order to stop work going ahead on the new pitch. At present, the College is in credit at the bank because of funds like the Harlington trust. Now they seem eager to realise these assets before it is too late.

Letters

Last week's issue contained a letter from 'Rachel Stone.' The letter, which criticised the news coverage

in FELIX was accepted in good faith through the internal mail. Ms Stone came into FELIX on Friday to explain that the letter was not from her. At present, FELIX trusts people to put their own name on letters. Whoever the spineless shit was who sent the letter; you didn't bother me, but you upset Rachel, I hope you're happy.

Sabbatical Elections

I hope that this year's candidates have read the deadlines for publicity production. Copies are available from the wallet by the papers on the stairway to the Union Office. So far it seems that a lot of people are not planning on much in the way of publicity. This is great by me, since I have to arrange production and printing. Keep up the disorganisation folks!

Credits

Many thanks to last week's collators, Dan Ganeslaw, Hina Thakrar, Nigel Khakoo, Ajay Mistry, Sumir Bhardwaj, Jay Thakrar, Graham Little, Richard Scott, Richard Evers, Stone, Michael Newman, Jackie Scott, Sydney Harbour-Bridge, Jim Lucy and Jeremy Burnell. Thanks this week to **Simon Haslam** and Rebecca Hardy for Science; Liz Warren for News; Toby Jones, Adam Tinworth, JLW, Charles Tomkins, MAC and Darren Austen for reviews; Chris Stapleton, Richard Evers, Roland Flowerdew and Jeremy Burnell for pics; Roland and Richard, Liz Rickwood and Colin Toombs for the food feature; Yve Posner for the Welfare feature; Clare Davis for the Transport feature; Anna Teeman for the opinion article; Carolyn Toynbee for Gossip; DEL, Adam and Dan, Stone and Sarah for music; Adam Harrington for news in the past and future; Rose and Andy for Typesetting and Printing; Jelly for laughs and company and Janus, who has finally done something right.

FELIX is published by the editor for and on behalf of Imperial College Union Publications Board and is printed by the Imperial College Union Print Unit, Prince Consort Road, London, SW7 2BB (Tel. 01-589 5111 ext 3515). Editor: Dave Smedley. Advertising Manager: Ramin Nakisa. Copyright FELIX 1990. ISSN 1040-0711

MAKE A Flying START TO THE NINETIES



	o/w	rtm
PARIS	£40	£65
BERLIN	£60	£89
MADRID	£65	£108
NEW YORK	£106	£198
LOS ANGELES	£150	£300
TEL AVIV	£89	£149
HONG KONG	£264	£528
SINGAPORE	£240	£480

SKI - ONE WEEK from only £79
WEEKEND BREAKS from £65

Don't MISS OUT THIS SUMMER -
Seats TO ASIA AND AUSTRALASIA SELLING FAST
Book NOW TO SECURE YOUR SEAT

ULU TRAVEL
SHERFIELD BUILDING
IMPERIAL COLLEGE



ULU TRAVEL



THE IMPERIAL COLLEGE OVERSEAS STUDENTS INTERNATIONAL NIGHT

BAR until 1.30am
PARTY till 2

AFRO-CARRIBEAN
DISCO

featuring
» **BREAKING POINT** «
BRAZILIAN CARNIVAL
featuring



SUN TROPICAL

DOORS:
9 pm

AND

6.30pm INTERNATIONAL FOOD STALLS (JCR)
7.00pm CULTURAL SHOW (MDH)

FRIDAY 16th FEBRUARY
JCR & MDH, SHERFIELD BUILDING, IMPERIAL COLLEGE

TICKETS FROM IMPERIAL COLLEGE UNION
£3.50 in advance £4.00 on the door

ROAR

Afro-caribbean reply

Dear Sir,

We, as the Afro-Caribbean Society, are writing in response to scandalous articles written in FELIX issue 858, dated Friday 9 Feb.

Many comments were made which were either grossly exaggerated or total fallacies. Although FELIX would like to believe otherwise, no attempt was made at even contacting any members of Afroc so that a fair and factual account of events could have been reported instead of a biased and second-hand version.

Firstly the police did not set foot on the premises on the night as they were never 'called in'. Secondly there was no evidence of 'professional drug dealing'. I don't know about you but I certainly don't call the trade of a sum of money for plasticine, rubber and aspirins a professional drug deal. This is not pure speculation as many students actually complained about the 'poor quality' of the substances they solicited. As there is no factual evidence of narcotic substances being sold we can only assume that none were present.

Neither the security guards, the doormen or the bar staff saw anything which was definitely to the contrary.

What people are prepared to buy from others is their business and their stupidity.

The event was only stopped due to a security guard

alleging that a student complained about people trying to sell him drugs. The guard gave me the option of stopping the event or the police being called in. I took the former option to keep the matter internal. Thus it was I who stopped the event and not 'the prompt action of Bar Manager Mike Smith' as was reported.

I would suggest that much of the trouble caused on the night was due to hot-heads under the influence of alcohol looking for a fight after they purchased a substance they found they couldn't smoke, snort or inject. (Although I did see a man try to stuff an aspirin up his nostril, which I quickly retrieved). How I pity them!

The tendency of all the articles written was towards sheer sensationalism. The so-called attackers were described as 'two large black men who probably weren't students'. Is this a serious attempt at description or a half-hearted one to impersonate the gutter press? Do you honestly expect someone to be able to identify a person 'fitting this description'? If so then you have at least 1 million suspects to sift through.

We would be the first to admit that security arrangements on the night could have been better organised but to say that we should have checked Union or ID cards as is common practice at all Union

events is utter nonsense. I can't remember the last time I went to a Union disco and my student card was checked, or maybe that's because they try to get as many people through the gates as possible so the event wouldn't be a total flop as they often are.

The name of Afroc has been dragged in the mud as well as the characters of the members. This mightn't have been so bad if our previous event, which was on a similar scale and went without hitch, was even mentioned in FELIX. But what has grossly offended all Afroc members was the referral to tonight's International Night as an 'Afro-caribbean drug frenzy'. This is an inexcusably racist comment that was totally unjustified and was put in merely for the titillation of the editor and co. We demand an apology for the terrible way we have been treated and we don't intend to let the matter rest. We are considering taking it to the committee for racial equality and will start the ball rolling for the speedy resignation of the so-called editor of this publication.

Our name was slandered in no less than four articles in FELIX. So the next time you're looking for rubbish to fill space at least make sure it contains a certain degree of truth and is reported sensibly.

David Cornwall, Life Sci 1, President of Afroc,
writing on behalf of members and supporters.

Miners are chauvinists

Dear Dave,

Last week's edition of the RSM magazine 'PIT' has pushed me over the point of just ignoring the matter to a total feeling of anger and dissatisfaction with the RSM and its attitude concerning women and sexuality. The degeneration of the males' view of women and the subsequent acceptance of this by women is frightening.

First of all let me say that the magazine is not funny and badly written; but this is not my main criticism.

The magazine featured songs to be sung on the way to Cambourne; the destination for lots of 'swillin and shoutin' with some rugby and hockey thrown in to swill and shout about. The songs are concerned with screwing girls who are absolutely begging for it; especially from our lads. The coach party also includes female supporters—how can they listen to this? How can they enjoy the company of these people? What will they do in the real world, outside Imperial, where this total sexist attitude doesn't exist?

Also included was a picture of a topless woman

sunbathing on a beach, supposedly in Cambourne; coupled with the headline 'She's waiting for it'. Do they associate people lying on beaches with people waiting for sex? Should we all head off to Brighton right now and rape a few women? According to PIT, it seems we should think of women as holes, give them 'what they all want' then shout and drink some more.

A recent evening lecture with a visiting professor produced a promotional poster of a seismic trace depicting a woman, reclining in a sexual position. When a DLB Officer (the 'active' portion of geology, organising lectures, fieldwork etc) was asked what he thought of the posters he said it was nothing to do with him, but hoped that they would be taken down before the visiting lecturer arrived. Apparently it's OK to stick pornography all over our corridors as long as people from outside/grown ups don't see them; we might get our wrists slapped.

What gets me is that nobody complains, nobody

expects anything to change.

The problem doesn't just lie with the men. Often the women act just as ignorantly. PIT is looked on as a bit of a laugh, not to be taken too seriously. It's all harmless fun they say. The said issue featured a fat woman, paid to take her bra off in front of men. Photographs were used to compare her with a second year geologist. She and many of the women in our group thought this was very amusing; and the subject was apparently over the moon to be thought of in such a manner.

This publication is sick and makes me feel so. I'm worried how these people will turn out; will they ever consider what effect the RSM environment has on their attitude?

The RSM stinks and I am ashamed to be associated with it. I hope Imperial College as a whole is not the same; but I have my doubts.

Peter Sharp, Geology 2.

Overseas subsidies

Dear Editor,

I have been puzzled for many months by IC and its treatment of students. It seems to me that the main objective of the College is to take as much money as possible with little or no return at all.

Take this for example; being a British citizen from birth and spending the last 12 years of my life here the College sees fit to charge full fees which, for completeness, is £6,000. The 'reason' that they give is that our family home is in America. How can they

in all fairness give the above, which holds no water, or is this just prefabricated verbal rubbish. No one that I have spoken to can see the reason behind this or are in true IC spirit and too apathetic to do or say anything. Is anybody prepared to give a valid reason? If not, I recommend that the status be changed before my funding runs out.

Also, another pathetic attempt to get more blood from the stone is Fisher Hall. The 'Hall' sees fit that with so many overseas students, with ample storage

space (!!) that we have to move our belongings elsewhere so that rooms can be rented. Many cannot move their things anywhere and with insurance for full storage at £150 for everything, where is the justice?

These questions need to be addressed and answered now before it's too late, or are overseas students doomed to fund IC forever?

Ian McGovern, Civ Eng 1.

More AfroC reply

Dear Dave,

In response to the slanderous comments made against Afro-Caribbean Society in last week's FELIX, I would like to comment the following:

Afro-Caribbean Society does not support the distribution, sale or use of drugs and is in no way involved in that business. The association made by FELIX in the What's On column is very unfair to all members of the Society. It must be said that it simply is a lie and, a very bad joke.

In your editorial, you are keen to put all the troubles of the past week under one heading: 'Afro-Caribbean Disco', instead of 'Violence' or any other alternative. Do you think you are contributing positively to the atmosphere at IC? Let me tell you the answer: no, you are not.

Your further comments accusing Afro-Caribbean Society as the source of all trouble are also unjust.

The problem that we are faced by is the drug suppliers of London looking for new markets: this time they have chosen IC as their target. The party held on February 2 this year was the second time that drugs appeared at an IC party. This is a bad development: we don't want drugs at IC and IC should not lose its reputation for being clean (forget about the alcohol for a moment).

Concerning the security at the Afro-Caribbean Society's event: no one had ever expected this sort of junk to turn up. Never, in previous years, has there been a need for such high security measures and Afro-Caribbean Society cannot solely be blamed for the ensuing messes. It must be taken as a warning to all societies to take preventive measures.

I hope this clears up any damned prejudices last week's FELIX may have imprinted in any reader's mind.

Yours,

Wouter van Hulten, ICU Overseas Students Officer.
P.S. Are you coming to the International Night tonight?

Is it live or digital?

Dear FELIX,

I recently attended a concert in the Royal Festival Hall costing £10.

Imagine my grief when I discovered that the concert was not digital, and could have considerably benefitted from a stereo image (or even megabass).

I feel that students should be told that a cd sounds more realistic—due to digital sound quality and left/right stereo images.

Yours,

Brian Ollocks, Acoustic Eng Post Grad.

P.S. Perhaps ICSO should consider incorporating Dolby noise reduction in their future presentations?

Still a con And there's more

Dear Dave,

RE: FELIX letter, 9.2.90

It's nice to know that J Tennant-Smith has not seen the downside of life at IC and I hope he never does. But the overwhelming probability is that he will. And he ought to recognise that the sense of loss and misery that ensues does not come from within. It is not attributable to any one defect of his personal life—it is the environment that he is surrounded by. This affects people in many unpredictable ways, but the one common denominator in the College it seems to me is the attitude of our tutors, professors and in particular the Administration. When you are required to work your socks off for eight hours a day, enduring the most terminally unenlightening lectures only to read in FELIX that the authorities are tightening the students' belts even further—it is inevitably going to affect your resolve. A reminder: during the time I have been here I have seen rents rise an average of 20% per annum; I have seen an attempt to remove the JCR from Union jurisdiction; I have read about the Housing Manager's comments that 'Students have no rights to accommodation during the holidays'; I have seen the College attempt to cut back the Careers Service. This is wrong. It is no longer a question of belt-tightening now. The problem has been around too long for anyone but Professor Eric Ash to be responsible for the ailment this College is suffering. I am warning him now—the issue is starting to affect people's lives.

Author of 'Imperial is a Con'.

Name withheld at Editor's discretion.

Mr Zeebub replies

Dear Mr Smedley,

Thank you for your burnt offering (RE: FELIX 858, Mr Two slices short of a house brick), but your contract with Him clearly states the requirement of three virgins (female, and that's the tricky bit around here) and your soul. Perhaps you should contact J Tennant-Smith as far as virgins go; apparently he has a monopoly on overseas imports. Your soul we took a while ago, as I believe your editorials show.

I wrote to express the Prince's concern at your decision to ban all our publicity. These Christian fellows must be allowed to air their funny views (clause 2.8 in Mr Kirk's Presidency contract requires it I believe) otherwise people might get it into their head that God is a well with-it guy. Let's face it, Christianity is no longer good business for us down here. Gone are the days of crusades, burning witches, orgies in the vatican and Popes fighting each other.

To this end I have here a few words which might help Mr Saradakis in his next letter; fornication, incest, lesbianism, concubinage, whoredom, seraglio, gentile, genital, satanism. Nothing like getting it out into the open is there, after all, Jesus was the right hand of God.

Hope to see you soon.

B L Zeebub, Lord of all things pointy, Physics 1.

Dear Editor,

As members of the Afro-Caribbean Society, we feel that we should give our reaction to the appalling defamation of our society name, made by three articles in last week's FELIX.

We feel that it was unfortunate that one or two muggings took place outside the JCR, regrettably well out of site of the vigilant external security, which we, Afro-Caribbean Society thoughtfully implemented on the night. However, it is in no way the Society's responsibility to enforce the laws of the land, in and around the College ground. Furthermore, we resent and object to any portioning of blame to the Society, since it is entirely and only a police matter.

Moreover, the petty robberies which took place inside the JCR during the event, were the result of individual stupidity and lack of basic commonsense, as the Afro-Caribbean Society had conscientiously provided for personal belongings to be looked after. However, a handful of people did not take advantage of this facility and, as a result paid, the consequences. Therefore, the Afro-Caribbean Society cannot accept any responsibility for the loss of personal belongings, however much we sympathise.

As Society members, we feel greatly insulted, hurt and saddened by the misrepresentation of the facts of what happened at that event, which FELIX contained last week. Parts of the articles in question contained fabricated material from completely unreliable hearsay evidence. In fact certain phrases used can be described as nothing less than slander (for example 'Afro-Carib. drug frenzy'), which as it may be witnessed by anybody present.

Finally, we would like to advise that a more thoughtful consideration should be taken before printing any article, specially on us.

Yours faithfully,

A Jegede, Mat Sci 1,

B Brito, Pet Eng 1.

RE-APPS

If you want to reapply to live in Hall next year application forms are available from the Student Accommodation Office, Prince's Gardens.
Deadline is Friday 23 Feb

Imperial College Operatic Society presents

UTOPIA LIMITED

A Comic Operetta

by

W.S. Gilbert and A. Sullivan
20 to 24 February, at 7.30pm in the Union Concert Hall

Tickets from £2.50, available from the Haldane Library, or at lunchtimes outside the SCR (Sherfield) or telephone ext. 7406

continued from front page

He said 'I am disgusted by the irresponsible attitude shown by the College administration and surprised that a major scheme like this can be blocked after it has been discussed at all the relevant Union and College committees and only requires approval from the three trustees of the Harlington Fund.' He accused College of blocking the Astroturf so that they could use the Harlington Trust to finance other projects, such as the money to be donated to the Merger Appeal.

The tenders were obtained by an outside consultant, recommended by the Hockey Association. He has been described by a cost estimator for a well-known Astroturf company as 'very specialised with a very large tendency to produce a Rolls Royce style hockey pitch.' The company have said that they believe they could lay a suitable pitch for £100,000 less than the tender being recommended by the consultant, which was £475,000, including the consultant's fees. Other sources have confirmed that the pitch should not cost more than £250,000 to lay.

Mr Turner said that 'It would be shameful if the (hockey) club were restricted next year by having no home ground to play on.'

MSF action

The Imperial College Manufacturing, Science and Finance Trade Union (MSF) are officially in dispute with the College over the potential redundancies of seven College staff, as reported last week.

The MSF have a policy of non-co-operation with the company to which the staff were formerly seconded, Imperial Biotechnology Limited (IBT). They are refusing to maintain the company's facilities and are not delivering internal mail.

Chris Stringer, IC MSF Chairman, said that he expected support from the National MSF to be 'forthcoming fairly quickly'. He said that IC MSF were getting in touch with the Commission Auditor General concerning possible misappropriation of College funds to support IBT. He said that they were also informing the Health and Safety Executive of unsafe working practices that were occurring since the staff were dropped. He cited staff working alone late at night as an example of this.

Mr Stringer said he also wished to express the MSF's thanks to the Department of Biochemistry which has provided temporary employment for the staff during their three months redundancy. He said that the MSF would be holding a branch meeting next week at which he would ask for support for more action.

PGAO quits

Imperial College Union's Postgraduate Affairs Officer (PGAO) Martin Gans resigned on Wednesday complaining about the lack of interest in the Union among postgraduates.

Mr Gans explained that although he is nominally in charge of coordinating the work of the departmental postgraduate representative groups, there has been little interest in these groups and he felt that he was no longer able to do his job properly. Postgraduates comprise 40% of all students at Imperial College, and have a budget of £1000 set aside for them by the Union. If they want anything done from now on, Mr Gans told FELIX, they 'will have to get off their backsides'.

Vote vote vote

The ICU elections have started slowly, by 5.30pm Thursday, only one candidate had signed up for each of the four sabbatical posts. Paul Shanley is standing for Union President, proposed by Andy Bannister; Ben Turner is standing for Deputy President, proposed by Dave Osborne; Murray Williamson is standing for Honorary Secretary, proposed by Ralph Greenwell and Chris Stapleton is standing for FELIX Editor and Print Unit Manager, proposed by Jackie Scott. All the candidates are fully seconded apart from Mr Turner.

Papers will remain up until 5.30pm Friday 23rd February. The IC hustings UGM will be on Thursday 1st March at 6pm in The JCR and the St Mary's hustings will be held on Monday 26th February at 6.30pm at St Mary's. Voting will be on Monday 5th and Tuesday 6th March between 10am and 5pm in

all departments.

In the Constituent College Union elections, nominations have closed for the new executive of the Royal College of Science Union (RCSU).

The candidates are: President: E. D'Sa (Physics 1), S. Hiimae (Physics 2) and G. Smith (Maths 1); Vice president: J. Briant (Physics 1) and J. St.Hill; Honorary Secretary: E. D'Sa and G. Mortley (Maths 1) and Honorary Junior Treasurer: N. Allen (Maths 1) and R. Murray (Physics 1). K. Pilbrook (LSD 2) is the only candidate for the post of Academic Affairs Officer, and needs only to be ratified at a Union General Meeting.

Elections for the other posts will be held during Monday 19th February and the results will be announced at a meeting at lunchtime on the following day.

Field Cup

The Field Cup, the annual Guilds-inspired competition during which teams have to scour London for items ranging from Harrod's bags and traffic cones to Policemen and the Rector's crutches, was held last Tuesday. Points are awarded on rarity and embarrassment value.

It was won by a team of Electrical Engineering First-Years calling themselves the 'Slightly Arseholed Society'. Trailing behind them in second place were 'The Great Independent Racy Ladies' (GIRL) with the RCS coming in third. The award for the greatest alcohol consumption by a single team went to the thoroughly inebriated 'Captain Paralytic and the Boys.'

Although City and Guilds officially and strenuously deny it, it is believed that one team was arrested climbing the wall of the Jamaican Embassy in search of a flag which had apparently already been taken down. An informed source told Felix that at the time, the team in question were not wearing trousers. Sources close to the team confirmed that they had been arrested for being drunk and disorderly but had not been charged. They were released at half-past-two that night.

EGM

An Extraordinary General Meeting (EGM) of Imperial College Union (ICU) is to be held on Thursday 22nd February at 1pm in the JCR. The meeting has been called to discuss a motion on travel subsidy for students representing ICU in competitions. During the meeting, and providing that there are no objections from the floor, elections will be held for the posts of Women's Officer, Handbook Editor, Phoenix Editor and FELIX Business Manager. The only contested election is that for ICU Handbook Editor.

Massey just in

University of London Union President Chris Massey has survived a motion of no-confidence in his leadership at General University Council (GUC). The Council Chairman, Jim Coyle, ruled the motion out of order, and a report critical of Massey was thrown out. Massey's opponents are openly critical of the way in which Coyle conducted the meeting, claiming that he was biased and acting against Union rules. There will be another attempt, they say.

Old Mac at IC

John MacGregor, the Secretary of State for Education and Science paid a two-hour visit to Imperial College on the 7th February. Mr MacGregor had been invited by the Rector, Professor Sir Eric Ash.

During his brief visit, the Secretary of State met the administrative staff, the Deans of the four constituent colleges and heard four 'minitalks' from researchers within the college. He has been invited back for a longer visit during which he may even meet some students.

Card check

Union cards will be checked at tonight's International night

RASP for free

RASP, a new careers magazine written by recent graduates, was launched this week. The magazine is independent of major employers and publishing houses and aims to give a realistic view of life in employment. Its editor, Emma Mahoney, claims that, unlike some of the more mainstream publications, the magazine will be able to carry articles which were critical of employers or careers.

RASP will be published bimonthly and is available free from the FELIX Office or with FELIX in departments.