

SABBATICAL
ELECTIONS

Colin Self at
the Tate
Gallery

zInSci@ght°
Alternative medicine:
foxxgloves against AIDS



FELIX

The student newspaper of
Imperial College

Issue 1048
February 2nd 1996

Fire services face funds cut

BY MIKE INGRAM

Fire cover around Imperial College and all over London is in jeopardy this week because of insufficient Government funding. Proposals from the London Fire and Civil Defence Authority (LFCDA) could slash resources at Fulham fire station by one fire engine and 24 staff.

Fulham, along with the Kensington and Chelsea station, provides the major fire cover for the College and surrounding areas. If the proposals are implemented, the station will have staff levels reduced from 53 to 29. This means that only one fire crew would be on duty at any one time, with support crews having to come from Kensington and Chelsea. According to one officer, this would "leave fire cover dangerously low... if there are two incidents at the same time, it could be a disaster."

The LFCDA plans to close four fire stations in Greater London, remove one fire engine from 22 others, and lay off a total of around 650 firefighters. The measures are forced because the government has set its budget for 1996/97 at £253 million, with an upper limit on spending of £259.2 million. The LFCDA is appealing against the cuts, saying



PHOTO: ALEX FEAKES

Another fire-and-rescue call at the Fire Station on Kensington High Street: the cuts could mean that emergency response times will fail to meet Government minimums.

that it needs a minimum of £268.5 million "just to stand still".

The four stations faced with closure include London's oldest station, at Manchester Square. The station, a listed building, covers much of the West End, including several hospitals and the area surrounding Oxford Street. A campaign to oppose its closure has been set up with supporters including the University of Westminster and Madame Tussaud's. Fire Brigade officers have warned that the loss of such a crucial station in central London would make it extremely

difficult to get to the scene of all fires within the five minute target set by the Home Office.

The proposals are also facing fierce opposition from firefighters' unions, MPs, businesses and the general public. A representative of the Fire Brigades Union told *Felix*: "Make no mistake. If any of these cuts take place lives will be lost. That goes without saying." Firefighters from all over London have been organising petitions against the cuts, collecting tens of thousands of signatures.

The final decision on cuts

Continued on page two

Government say no to fees

BY DIPAK GHOSH

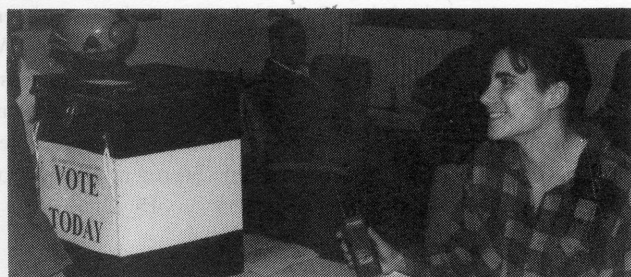
The Government has expressed strong opposition to the introduction of top-up fees. It has advised the Committee of Vice Chancellors and Principals (CVCP) to consider the consequences very carefully on before taking any decision on the issue.

This warning comes shortly before the CVCP meet on Friday to discuss how to claw back the cuts in higher education funding. The Government may instead push vice-chancellors to consider cuts in student intake. In a document published last year, the Higher Education Funding Council for England gave permission for institutions to take less than their contracted student numbers. The funding council said this week that the reduction in student intake has been left "deliberately open".

They also warned that institutions which chose to reduce students below the lower level would be subject to having some of their funding withdrawn. If a large number of institutions decide to make drastic cuts, the the funding council would have

Continued on page 3

in summary



Sabbatical elections '96

Papers go up on Monday for next year's ICU sabbatical elections. Nominations will be open for a fortnight, followed by campaigning, then voting on March 4th and 5th. Special, page 21

Calculator dispute

The first outing of the new rules governing the use of calculators in exams caused a sheaf of problems. The calculators will soon be available in the Union bookstore. page 4

Academic Affairs

BY MARK BRIDGE

The annual Academic Affairs half day took place on Wednesday this week, in which student academic and departmental representatives discussed all manner of topics with academic and college staff.

This year, as last, the event was organised by Matt Szyndel, the RCSU Academic Affairs Officer. The meeting was a constructive one where students got an opportunity to raise issues and express their views. Those present included the Pro-Rector for Educational Quality, Prof Alan Swanson, the Academic Registrar, Vernon McClure, Senior Tutors and College Tutors, and the Director of Estates, Ian Caldwell. Sarah White, ICU president, chaired the meeting.

Of the many subjects raised, top up fees, photocopying, calculators for exams and library provision featured prominently, with a range of additional comments and concerns about the BMS project, Catering and the sometimes questionable content of Clubs and Socs publications.

College-wide photocopying card variations was a topic of

contention with many students and was also raised last year. The matter has proved difficult to resolve; Professor Swanson explained that the various college departments had their own budgets from which they subsidised the cost of photocopying and that it would not be fair for a department to use up photocopying funds on non-departmental personnel.

First and second year students will enter codes instead of their names on exam scripts from this summer. The idea behind this is to prevent any assumptions as to student capability on the part of markers. These alpha-numeric codes might create difficulties though. The Senior Tutor for Computing, Margaret Cunningham, whose department has used numeric naming systems in exams for some years now, explained how there could be problems under exam conditions, where students simply do not copy their numbers correctly. Margaret Goodgame, one of the College Tutors, added that illegible numbers were far harder

continued on page four



PHOTO: ALEX FEAKES

The Fire Station on Fulham Road's loss of an engine and 24 fire-fighters will mean that fire cover for Evelyn Gardens will come from the more distant Kensington Station.

continued from front page

will not be made until a LFCDA meeting on the 22nd of February. The Unions and their supporters intend to stage "a massive lobby and demonstra-

tion" at the meeting to make their position clear. However, if the fire service budget is not increased when the final decision is made on February 8th, large cutbacks may be the only option.

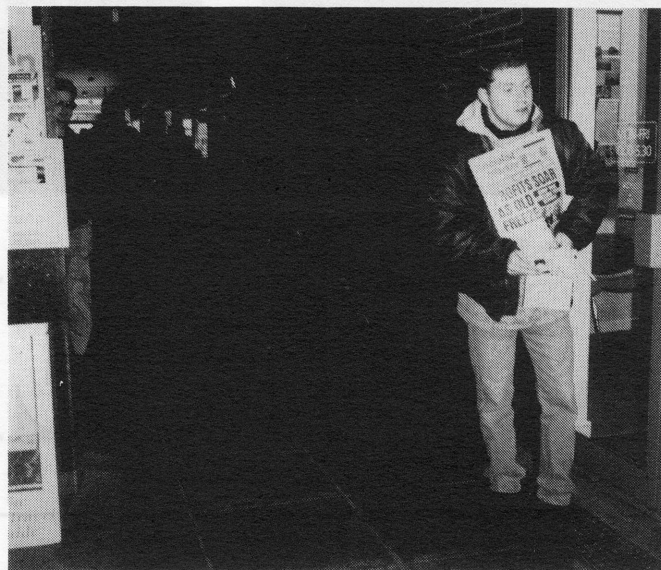


PHOTO: ALEX FEAKES

The Socialist Worker Student Society distributing leaflets and selling copies of the Socialist Worker paper outside the JCR on Wednesday. The SWSS members here achieved little noticeable success handing out their flyers or convincing passers-by to champion the cause of Arthur Scargill's Socialist Labour Party, and specifically that of the SLP candidate, Brenda Nixon, in yesterday's Hemworth by-election.

News in brief

BY THE NEWS TEAM

Assessment postponed

Ian Caldwell, Director of Estates, has revealed that the Biomedical Sciences building may not go to a planning meeting until February 21st. The delay in obtaining planning permission to demolish the old Chemistry building, which should have been granted at last month's committee, could put the project behind schedule.

The current timetable for the various stages of the construction stipulates that work on the building should start within the next few months. There is also a contingency period of approximately six months which has been allowed for, just in case this sort of delay occurs.

However, this is not the first delay to the project, as the contractors were slow to move on to the site at the end of last year, and this took up some of the slack in the schedule. Subsequently, there is little time for the planning decision to be held up, and Mr Caldwell admitted that 'things would get serious' if that were the case. He remained confident, however, that permis-

sion for the demolition would be granted.

ICU doormat mislaid?

The continuing saga over the disappearance of Imperial College Union's front door mat took an unexpected twist on Thursday afternoon when it went missing again from Royal Holloway's Union building.

This is the second time that Royal Holloway have claimed ignorance of the whereabouts of the mat, even though they admitted to having it in their possession last term. The mat went missing from 'outside the door' of the RH Entertainments and Marketing sabbatical's office. However, this was only discovered when Sarah White and Matt Crompton phoned from IC to arrange a time to collect it.

The disgruntled Imperial sabbaticals were informed that none of the officers at Royal Holloway knew anything about the mat; it had just been left for ICU to pick up. Sarah White was said to be unimpressed with RH's attitude, and commented that it was irresponsible to leave a £250 rug just lying around outside an office.

Pimlico Connection celebrate 21 years

New co-ordinator for student tutoring scheme

BY JONATHON TROUT

On Monday evening the Pimlico Connection celebrated its 21st birthday with a party in the Union Dining Hall. The gathering was also a farewell for the outgoing co-ordinator of the scheme, Betty Caplan, who is leaving to teach in Zambia for the VSO after several years.

The Pimlico Connection is a scheme initiated at Imperial College where students volunteer to tutor children in local schools in their free time. It started in 1975 with twelve Mechanical Engineering students helping out in the Pimlico school on Lupus Street, but has gradually spread to include a total of fourteen placement schools in the London area, with 130 students involved each year.

Now though, The Pimlico Connection want to expand into



PHOTO: ALEX FEAKES

The outgoing co-ordinator of the Pimlico Connection, Betty Caplan, cuts the birthday cake with current chair, Ian Gregory. The party brought together past and present student tutors and some of the teachers that they have assisted.

a whole new area; that of national funding and organisation of student tutoring. Students Vicki Wellham and Hester Shaw were recently in Cleveland, Ohio, for an international conference on

student tutoring in schools, and have brought back lots of useful ideas for the British scheme. Featuring heavily at this seminar were nationwide organisations, such as COOL of the USA, and

Israel's 'Perach' Organisation.

With the financial help of sponsors BP, the Pimlico Connection now plan to send these two students back to the USA for this year's assembly, the World Conference of Student Community Service in Washington DC. Also, Helen Moglestue and Caroline Goldham are to visit the Israeli equivalent, and hope is to expand the help they now give British children. One of variations on the theme is that of the Connection's French counterpart's students visit prisons, not only giving educational, but medical and health advice as well.

However, though last year's Pimlico chair's met with Education Minister Gillian Shepherd, there seems to be no Governmental approach to the idea of student community service.

University chiefs warn Government over funding crisis

continued from front page

to refuse. Institutions have until February 9th to submit plans for new student numbers to the funding council.

The alternative option for vice-chancellors is top-up fees. The vice-chancellors reacted with surprise to the Government's statement that the consequences of top-up fees would rest with the universities, since Ministers had previously reassured universities that responsibility of imposing charges for courses lay with them. The chairman of CVCP and head of Sheffield University, Gareth Roberts, has said that a one-off charge at a flat rate of between £100-£300 could be levied on students at all universities in the academic year 1997/1998. He stressed that this is a short-term strategy while the whole issue of the future of higher education funding could be considered. However, it is not clear whether it would apply to all degree students or only the intake in the Autumn, expected

to be about 500,000.

Levying the charge would help universities recoup cuts announced in the November budget statement. It has been estimated that universities are £550 million short of the income needed to maintain the current service. Vice-chancellors fear that the cuts are likely to be even more severe because the Government has not yet decided where to find the £100 million from the 1996/97 accounts due to the postponement of student loans privatisation.

Vice-chancellors may consider boycotting inspections of their teaching quality, which the Government requests to assess the standards of teaching. According to a survey by the Guardian, vice-chancellors are generally opposed to levying charges and boycotting inspections, but there is a general consensus of opinion that some action must be taken to register opposition to funding cuts.

Derek Roberts, Provost of

University College London, said the Government's statement was "totally inadequate" and the warning indicated that the Government was "scared" of the vice-chancellors' actions close to an election. He demanded that the Government say what the alternatives to top-up fees are.

Prof Roberts has angered his students by proposing a "realistic" top-up fee of £1000 per year, a third of which he will use to increase academic salaries. "I am not willing to see the run-down of higher education in this country in the same way as secondary education, if you don't believe in fairies, students will have to pay."

However, Martin Harris, vice-chancellor of Manchester University said cutting student intakes would not bring in any extra money. He told the university's ruling court that top-up fees, combined with a better student loans system, were now the only alternative to irreversible damage. Gillian Shephard, the

Education and Employment Secretary, had been thought to be in favour of top-up fees as long as universities took the responsibility. But a spokesman said recently that "the Government sees no need for top-up fees and is concerned they might disadvantage students from less well-off families."

The Russell group of top universities, which also includes Imperial College, has come out against introducing top-up fees. Sarah White of ICU has said top-up fees are unacceptable as they would be unfair to students who cannot pay. However, according to a survey by New Solutions, a group of student union officers, 56% of student reps said that "individuals who experience post-16 education" should contribute towards the cost. A survey of 1,000 students from around the country showed that 53% thought that the taxpayer should pay for tuition costs.

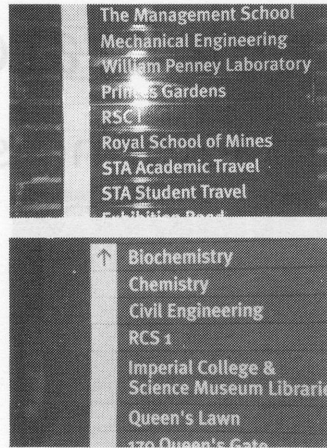
Imperial College's reaction to top-up fees page 4

AA Meeting

continued from page two

decipher than names. Vernon McClure, the Academic Registrar and a previous University of London exams inspector, said that it would always be possible to identify handwriting in such an event.

The Biochemistry Departmental Representative questioned the total lack of library and social provision in the Biochemistry building. Dr Gounaris, Deputy Senior Tutor for Biochemistry, said there were discussions on converting some labs into social space. The allocation of space for group work as part of the plans for the addition of new floors to the library was suggested as a remedy for this.



It seems that the new signs which have spread around college have brought an entirely new department for IC. The Royal Shakespeare Company have been given a few rooms just off the walkway, where the top photograph was taken. Sadly, other signage suggests that we haven't actually lost the Royal College of Science.

Calculator Problems

BY ANDY SINHARAY

Problems appear to be emerging over the use of calculators following the recent introduction of college-wide regulations. Departments are forcing students to choose a certain type of standard calculator. Andy McClure, departmental representative for Electrical and Electronic Engineering, voiced concerns after final year students were compelled to adapt to the new equipment in time for their recent round of finals.

Vernon McClure (no relation) said University of London rules about 'compromising the integrity of exams' and the 'excessive sophistication' of some models affected the level playing field of exams. He said

that students were having problems using different machines. However, Mr McClure regretted that the decision was made so quickly: students haven't been able to take advantage of the financial saving a bulk order would have given. Sarah White, ICU President, said that ICU bookstore will stock the new calculator, though at a slightly higher price than Union had originally wanted.

The Pro-Rector for Educational Quality, Professor Alan Swanson, said that it was assumed that students may not want to downgrade by buying their own basic calculator and would instead choose to practice with the ones provided for the purpose by their departments.

IC consider charging 'entrance fee'

BY ANDY SINHARAY AND ALEX FEAKES

Imperial College's official line on top-up fees was outlined by Professor Swanson, Pro-Rector for Educational Quality, at Wednesday's Academic Affairs meeting.

The College has been looking into the possibility of charging top-up fees in view of the recent Government cuts, and had been looking specifically at two ways of charging the fee.

Firstly, a straight 'signing on

fee' might be charged, whereby people would pay a one-off amount of approximately £300 when they join Imperial College. Secondly, a top-up fee proper could be introduced. This would be in line with what many other Universities are contemplating, and would involve students being charged for each year of their study. However, neither has been agreed for certain.

Professor Swanson stressed that the Rector was not keen to initiate either scheme, though

the Committee for Vice-Chancellors and Principals (CVCP) is meeting today to discuss the issue. He felt that key decisions about higher education funding have been thrust upon them and that "the Government [is] getting other people to do their dirty work." Some representatives on the CVCP have suggested that they might threaten to introduce top-up fees in May for political reasons.

Professor Swanson went on to say that "the squeeze would

continue", and the level of any fee would be set by the governing body, subject to provision for poorer students. When pressed about the subject of a subsidy for the less well-off, Professor Swanson replied that a US style system may have to be adopted. In American colleges, the financial status of students plays no part in the selection process. Students are selected on academic merit only, and fee levels are set so that rich students essentially subsidise the poorer ones.

"Lovey lovey hugs and kisses from Snookums to Fluffy Bunnykins"

YES. It's that time of year again.

Next week's Felix will be a Valentines special and will include YOUR messages.

Drop in all Valentines to the box in Felix.

All Valentines must be in the box by 6pm Wednesday 7th.

Give that special person in your life a nice surprise next Friday, with a Valentine in Felix!

The Problem With Flight 51L

Few people will have forgotten the moment when they saw the Space Shuttle *Challenger* catastrophically explode, killing all seven of its crew. It was a shocking moment. It was ten years ago last Tuesday.

It was tragic to lose seven lives, but for NASA, the accident caused further problems, delaying their space program by at least three years and permanently changing the public's attitude towards manned space flight.

Two days after the accident William Graham, the head of NASA, set up a committee to investigate what went wrong with the shuttle. The commission, which included Neil Armstrong, Sally Ride and the Physicist Richard Feynman, found that there was a failure in the seals between the joints which held the solid rocket boosters together.

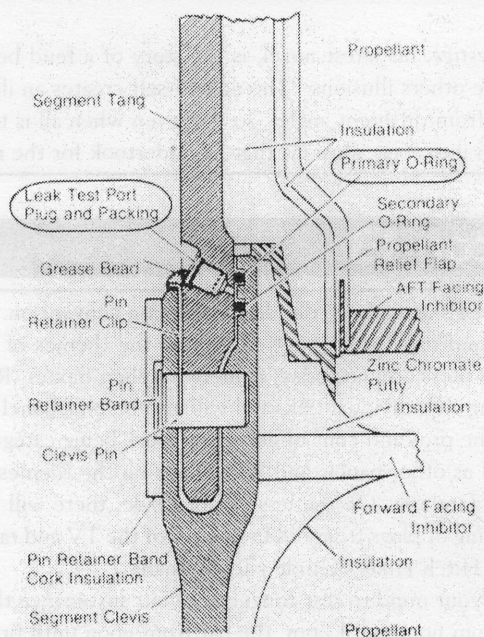
During the launch, two solid-fuel rockets boost the shuttle for a few minutes before they separate from the shuttle and fall back into the sea. The boosters are made in sections and the joints between these sections are sealed before each flight. The joints are sealed by two rubber O-rings, which are approximately a quarter of an inch thick and lie on a circle 12 feet in diameter.

When these seals were originally designed by the Morton Thiokol Company, it was expected that the pressure from the burning fuel would squash the O-rings. But because the joint is thicker than the walls of the rocket, the walls bow outward during launch causing the gap between the joint to expand (this problem was discovered very early, before they ever flew the shuttle). To maintain the seal, the rubber has to expand fast enough to close the gap, so the springiness of the rubber was an essential part of the design. The Thiokol engineers went to the company who manufactured the rubber, but they said that their O-rings are not meant to be used that way, so they could give no advice. Several makeshift improvements were made to the design, but the joints still leaked, causing the O-rings to burn in places.

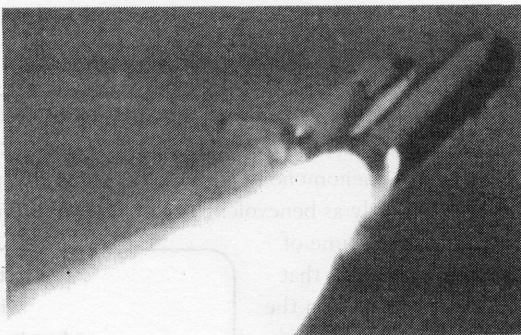
Up until the *Challenger* flight, there was a history of 'O-ring incidents'. This problem was discussed in NASA's "flight readiness reviews" but there appears to have been some self contradiction in the recommendations (see Recommendations, below right). If the problem is "most critical", how could it also be "safe to continue flying?"

During the investigation, an engineer from Thiokol revealed that on the night before the launch, they had told NASA the shuttle shouldn't fly if the temperature was below 53 degrees (temperature is important because the colder the rubber seals are, the less springy they are). The temperature on the morn-

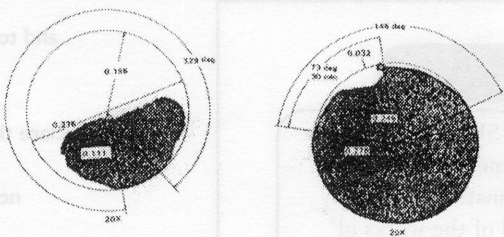
- **The lack of reduce joint criticality**
- **Analysis of design as pressure, a**



A solid rocket booster joint. If the primary O-ring gets burnt, flames can exit through the test port.



A tell-tale flame coming from the test port on the solid rocket booster, just before the shuttle exploded.



Two examples of O-ring erosion. Such erosion occurred unpredictably on several previous missions.

Recommendations

- The lack of a good secondary seal in the field joint is most critical and ways to reduce joint rotation should be incorporated as soon as possible to reduce criticality
- Analysis of existing data indicates that it is safe to continue flying existing design as long as all joints are leak checked with a 200 psig stabilization pressure, are free of contamination in the seal areas and meet O-ring squeeze requirements

ing of the flight was 29 degrees. It seems pressure was put on Thiokol to launch, even though at least two of their seal experts were against it.

This is not the whole story of what caused the Challenger accident, but it does make clear that there were failures in both the engineering of the shuttle and in management. Most aeroplanes are designed "from the bottom up" meaning that all the components have already been extensively tested. One criticism of the shuttle is that it was designed from "the top down" (to save time). Whenever a problem is discovered, a lot of 'makeshift' redesigning was required to fix it. This is what happened with the seals.

Now matter how many safety features are built into a rocket, space flight will always be a very risky business. You will always need a huge amount of fuel to get into orbit. Should we be sending astronauts into space at all? Figures vary wildly, but most estimates put the chances of a shuttle launch going catastrophically wrong at around one in one hundred. If this figure is correct, we can expect another accident within the next fifty years or so.

Challenger had on board a school teacher, Mrs McAuliffe. This signalled the start of space flight being available to anyone – not just astronauts. Since then attitudes have changed. Whilst some work in space can only be done by humans, there are good arguments for concentrating our efforts on unmanned missions. Sending up manned spacecraft requires every launch to be perfect, which means triple backup systems, and all manner of redundancy. The result is an inordinate amount of testing and expense. The shuttle for instance has four identical computers all running the same program just in case the other three should all happen to fail at the same time. There is also a fifth backup computer on a separate circuit – it has never been used.

Humans can also cause problems with experiments in space. Their movement jogs apparatus which should not be disturbed and introduces dust and moisture into the environment. The manned "International Space Station" is due for launch in 1998. But at an estimated cost of \$94 billion it is under threat. American Taxpayers and even many space scientists think that this

money could be spent more productively. Unmanned spacecraft, such as the successful Jupiter probe *Galileo* may be the best way to get more science for less dollars.

Ben Wilkins

Christopher Priest

Back in 1983, Chris Priest was on the list of "Best of Young British Novelists". It should be noted that by then he had ceased to write what is obviously called science fiction, and hence was more acceptable to the literary establishment.

His early works of *Inverted World*, a story set on an infinite hyperbolic world in a finite universe, and *A Dream of Wessex*, exploring the virtual reality of a potential future utopia, where part of the British new-wave of the 70s. He has cited HG Wells as an influence, and this can be seen in *The Space Machine*, a pastiche on a mixture of *The Time Machine* and *War of the Worlds*, as well as in both *The Glamour* and *The Prestige*.

The Prestige, his latest novel, is the story of a feud between two Victorian magicians, each trying to discredit the others illusions. The novel itself creates an illusion, using several different diaries to tell the same story from different angles, so that even when all is told the truth is ambiguous. His talk will be on the research into stage illusions that he undertook for the novel.

Picocon 13

Picocon is icsf's annual one day science fiction convention. Each year we organise a programme of speakers, panels and discussions centred around the themes of SF. This years speakers are three of the best British SF writers around today, namely Stephen Baxter, Robert Holdstock and Christopher Priest. Each will be giving an individual talk, and will also be on a panel entitled "The Dangers of Being Pigeonholed" - discussing the pros and cons of any given work being categorised under the SF genre.

As well as other panels and discussions on the themes of the X-files, vampires, shared universes and the state of fandom. On the less cerebral side, there will be physical games such as Live Lemmings, and ad-hoc reading of plays from old favourites of the TV and radio. There will also be a dealers room of books, comics and Hitch Hikers Guide paraphernalia.

To put your mind to rest concerning your sustenance throughout the day, Da Vinci's will be open: the food side from noon until 2pm, the bar from noon until 6pm.

Robert Holdstock

Although his early work was mainstream science fiction, it is for his dark woody fantasy novels to which he is best known. Starting with *Mythago Wood*, and continued in several other novels, these explore the idea of a persons own subconscious triggering the re-emergence of mythological characters from the past. This phenomenon is enabled in an ancient piece of primary forest, and the characters brought forward by the modern day visitors are not necessarily as benevolent as folk legend implies.

Holdstock is actually a very prolific author in the pure volume of his work, but due to his extensive use of pseudonyms it is not all that obvious. For example, he is the author of *Elite*, the novel based on the computer game of the same name, and has written scripts for TV and radio. His new novel, *Ancient Echoes* - a retelling of the Gilgamesh myth, will be out in May.

Stephen Baxter

Stephen Baxter first became known to British SF readers through his short stories in *Interzone* and other magazines. Much of this fiction was set in his *Xeelee* sequence, an imaginative and vividly depicted future history that put many in mind of the works of Larry Niven. His first novel, *Raft*, cemented his growing reputation; the description of the life of human refugees thrust into a universe where gravity is a force ten million times stronger than in our own is a hard-sf tour de force justly compared with *Tau Zero* and *Mission to Gravity*.

His subsequent output has maintained it's quality but also increased its breadth. As well as further *Xeelee* stories and novels, he has written SF-Victoriana, alternate history and most recently a highly acclaimed sequel to HG Wells' *The Time Machine*, *The Time Ships*.

His talk will be on HG Wells time at Imperial, and how it affected his writing of his fiction.

It is not true that the map of freedom will be complete
with the erasure of the last invidious border
when it remains for us to chart the attractors of thunder
and delineate the arrhythmias of drought
to reveal the molecular dialects of forest and savannasvann
as rich as a thousand human tongues
and to comprehend the deepest history of our passions
ancient beyond mythology's reach

So I declare that no corporation holds a monopoly on numbers
no patent can encompass zero and one
no nation has sovereignty over adenine and guanine
no empire rules the quantum waves

And there must be room for all at the celebration of
understanding
for there is truth which cannot be bought or sold
imposed by force, resisted
or escaped.

From *Technolibération* by Muteba Kazadi, 2019

From Australian (and hence too expensive to fly to Picocon) author
Greg Egan's novel *Distress*, Millenium 1995

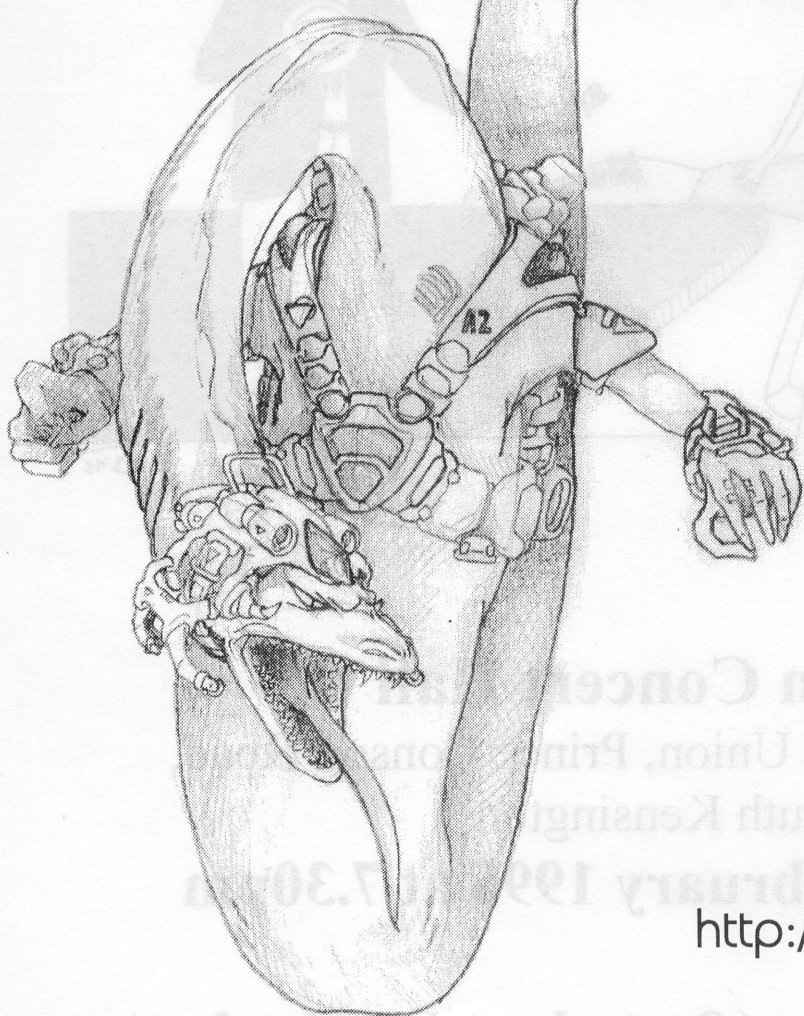
Imperial College Science Fiction
presents

PICOCON 13

Sunday 4th February 1996

9.30 am - 8.00pm

IC Union, Beit Quad



Cost:

£2 icsf members

£4 any student

£4 ic staff

£8 otherwise

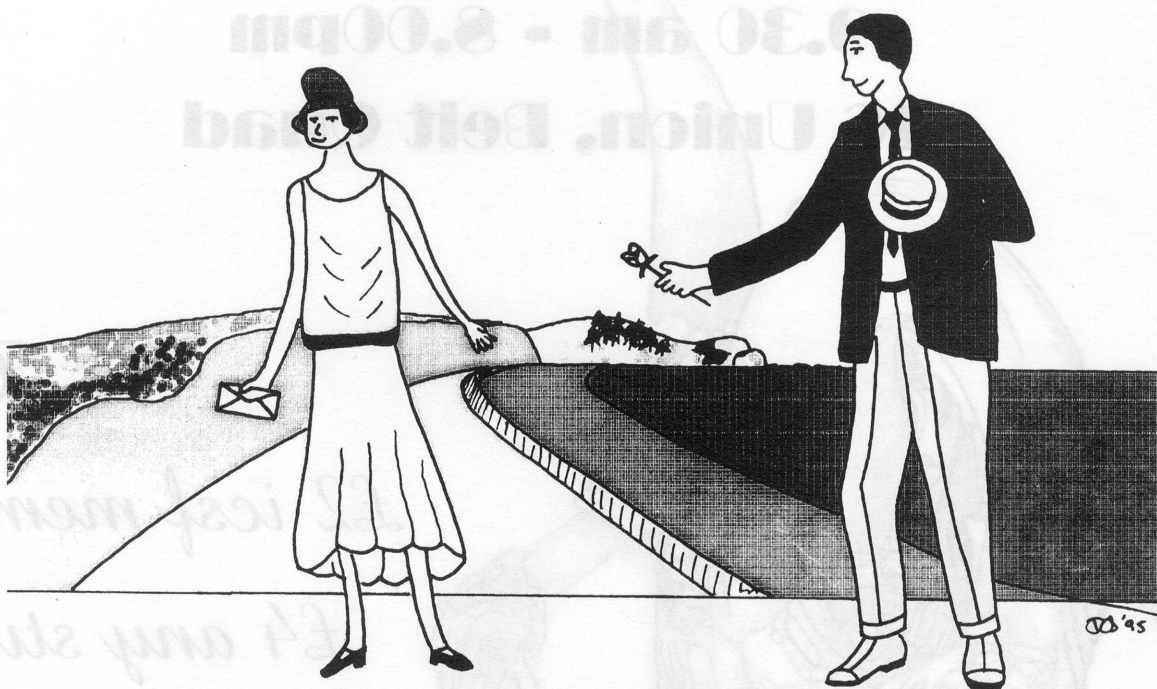
<http://www.ph.ic.ac.uk/moontg/>

PICOCON XIII



Imperial College Operatic Society Presents

The Boyfriend



Union Concert Hall

Imperial College Union, Prince Consort Road,
South Kensington

6th - 10th February 1996 at 7.30pm

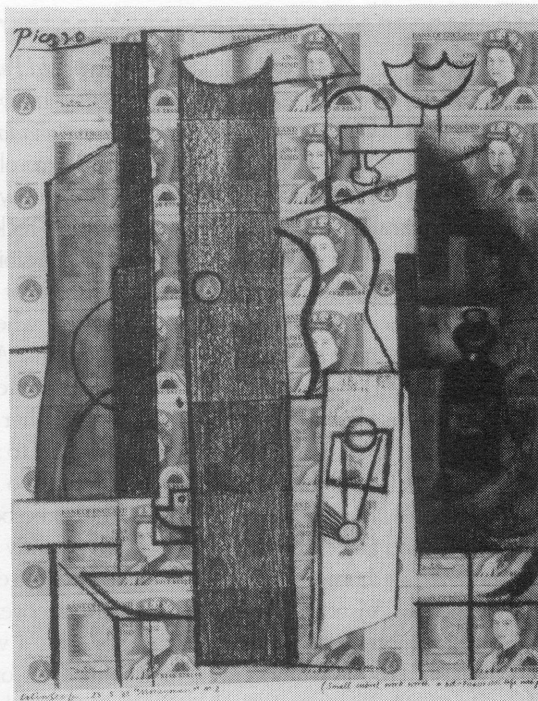
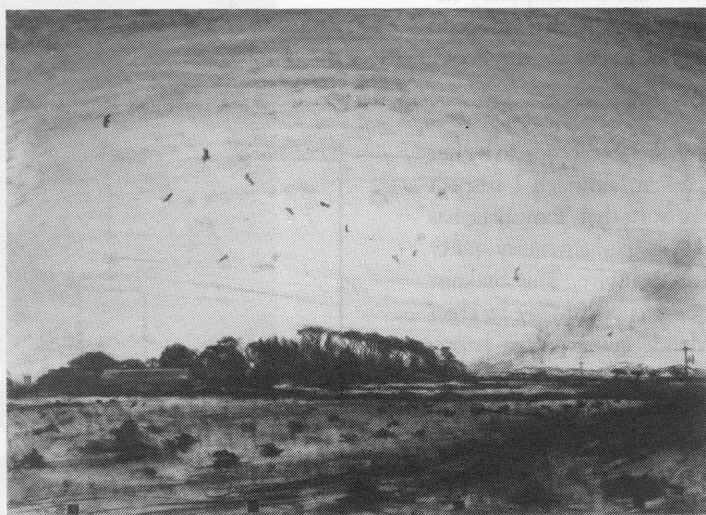
**Tickets £4 concs (& students), (£6 other)
available from Union Office**

A Musical Play by Sandy Wilson
By kind permission of Samuel French Ltd

fi

Colin

Colin



Self

Self

colin self

tate gallery, millbank, until 24 march.

the exhibition surveys the work of this remarkable british artist, one of the founders of pop art.

left: muckspreading again above: moneymen no 2

spaces: colin self rachel

column: simon baker

book: tim winton - the riders magnet

insight: shamanic healers and new drugs cath cotton

gig: terrorvision + honey + crack + cecil jason

album: teen angels - daddy mr happy

album: the bucketheads - all in the mind max

singles: bEa

gig: teenage fanclub + drugstore nick

album: tortoise - millions now living will never die jim

album: frank black - the cult of ray ian

film: heat sarah turner

video: mad bull 34 part 1 magpie

ix

x

xi

xii

xiii

xiv

xv

xvi

book: the riders - tim



winton babes magnet

Tim Winton is an Australian, but this doesn't stop him wonderfully weaving together the story of Fred Scully and his odyssey across Europe in search of his beautiful wife (not Dana of X-Files fame!), who has mysteriously disappeared.

Fred has moved to Ireland and is renovating what is to be the new family home, while his wife sells up the assets in Australia. At the appointed hour only his daughter Billie turns up at the airport, and the search for his wife begins. This search takes the unlikely pair through Greece, France, Amsterdam and situations evoked breathtakingly by Winton's excellent writing.

"Maybe old Pete-the-Post was right - you never really knew anybody, not even those you loved. People have shadows, secrets". The main themes of this book revolve around how well you really know people - your wife or yourself. We see paranoia and recklessness in Fred Scully as the tumult of possibilities flows through his mind. You feel sorry for him, angry at him and eventually relieved when the brilliantly thought out ending appears. Alongside Fred, his seven-year-old daughter suffers horribly but has the stronger will, dragging her father up just at the moment he looks likely to stumble. "Do you think someone can love too much?" she asks at one point; throughout the book she is the only one whose love is constantly pure.

The book screams 'Booker Prize shortlisted' on the front cover, promising much but delivering more. It's a very thought-provoking thriller and with the wonderful mental images it conjures up, that old cliché 'unputdownable' is fully justified. Whether you want contemporary fiction at its absolute pinnacle or just a damn good read, £5.99 is a small price to pay for this book.

the riders by tim winton
is out now in paperback from
Picador, price £5.99

b
o
o
k

simon baker

It has not been a particularly good week or two for women in politics. The First Lady of America, being an accomplished lawyer, is about to embark on a busman's holiday by appearing before a federal grand jury over the Whitewater affair. The real problem is that because of this and other legal problems, Bill Clinton may be declared bankrupt, which could prove a tad tricky. Were it to happen over here, it would mean instant loss of parliamentary seat, but I don't know what the situation is Stateside. Call me cruel, but as someone who is not an enormous fan of the President and much less so of his wife, I do find it all very funny.

In terms of amusement however, this American debacle is but an episode of Gag Tag compared to the mess that Harriet Harman has created for Tony Blair. The Shadow health spokesman, not simply a Labour MP, but one who is supposed to take collective responsibility for party policy (now there's a novel idea, Tony), sees fit to exercise a choice that she and her party are seeking to prevent others from making. If that is not hypocrisy, then I demand a refund on my dictionary. I'm afraid that such double standards are not acceptable, and to use the defence that it is wrong of Conservative and dissenting Labour MPs to drag the education of her son into the political arena is laughable, since she is responsible for such a situation. Don't get me wrong, I am not opposed to her exercising the choice to send him where she and her husband want. That is one of the great educational reforms of recent times. What I cannot accept is her continued opposition to

a system that she has given her blessing to by her actions. She should resign, although I suspect that the enormous pressure that Tony Blair has brought to bear on his parliamentary party means she will probably survive. This Stalinist suppression of dissent driven, I dare say, by chief spin doctor Peter Mandelson, is not a happy reflection on an opposition party that I and many others may not have agreed with, but whose integrity we once respected.

I think I ought to stick closer to home. Unfortunately, that means that the subject of the BMS building is unavoidable. We hear that there is a little problem with routine waste at the site, such as mercury and asbestos. Routine waste! I'd like to know their definition of dangerous waste. Weapons grade plutonium, perchance? The smallpox virus? Not only is mercury very toxic, but it is also very expensive to get rid of safely. If these blokes are so blasé about toxic waste, they might like to come and clean out my fridge. Still, at least the boys from STOIC were spared from the perils by being chucked off the site. As any 3rd year chemist trying to listen to the pearls of wisdom spilling forth from our lecturers will tell you, work has started in earnest, and yet we see



that planning permission still hasn't been granted. As my dear old mum said, it'll end in tears.

Well, we had another double roll-over jackpot. The huge sum of money, some say, is capable of wreaking havoc on the lives of the poor. It's not wreaked havoc on my life. Not even a tenner since it started. Even with Anthea Turner on holiday, I still can't win. It could be you, so why not me?

"If these
blokes are
so blasé
about toxic
waste, they
might like
to come
and clean
out my
fridge."

X

Shamanic Healers Lead the Hunt for New Drugs

If The Shaman think Ebenezer's good, they want to have a look at what real Shamans are up to. In recent years indigenous healers and American pharmacologists have been collaborating in research which has led to the development of new drugs – drugs that may prove useful in the treatment of a range of diseases including AIDS.

Medicinal practices employed by traditional healers have long been regarded with scepticism by many Western practitioners but research by ethnobotanists – scientists who study the botanical knowledge of indigenous, or other traditional communities – suggests that there is much to be taken seriously within less orthodox medical systems. Indeed, ethnobotanists have shown that many modern therapeutics were originally discovered during the systematic evaluation of medicinal agents used by non-industrial societies. For example, the pain killers morphine and cocaine, the heart drug digoxin, and the anti-leukemic agents vinblastine and vincristine have all been discovered this way. Most recently, researchers from AIDS-conscious America have discovered a number of novel compounds which exhibit particularly potent anti-viral activity.

Paul Cox, is an ethnobotanist based at the Brigham Young University in Utah, US. Having spent his undergraduate years in Samoa, he continued his studies at postgraduate level, looking at the ways in which Samoan people used and managed the rain forest plants of their South Pacific island. Since that time (the late 1970's), Cox and his co-workers have examined the pharmacological activity of many Samoan medicinal plants, one of which demonstrates strong activity against the human immunodeficiency virus HIV-1.

Sponsored by the US National Cancer Institute (NCI), who have strong interests in both anti-cancer and anti-HIV therapeutics, Cox began his latest search by concentrating on Samoan plants used in the treatment of viral diseases. Initially, plants of interest were collected in Samoa, and sent to the NCI laboratories for pharmacological analysis. Any species showing significant anti-viral activity could then be investigated further, using a process known as

activity-directed fractionation,

where crude plant extracts are increasingly purified, as only active

fractions are retained for further purification. In this way, one plant, *Homalanthus nutans*, has been identified as a source of a powerful anti-HIV compound. Used in Samoan medicine in the treatment of the viral disease yellow fever, *Homalanthus nutans* has been found to contain the novel anti-viral agent prostratin which seems likely to be taken into clinical trials in the near future.

Encouraged by the success of Cox and other ethnobotanists, several pharmaceutical companies have begun to show increasing interest in an

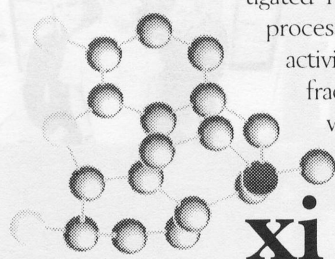
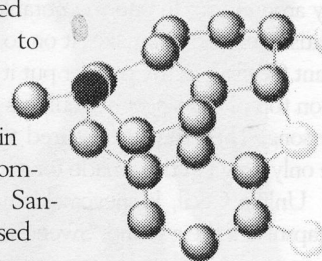
ethno-directed approach to drug prospecting. Indeed, in 1990, one company, the San Francisco-based *Shaman*

Pharmaceuticals, was established with the specific aim of using an ethnobotanical approach to drug discovery. Using a multidisciplinary team which includes medics, natural product chemists and ethnobotanists, this approach has so far resulted in the development of two new products which are already in clinical trials: Provir™, an oral product for the treatment of respiratory viral infections, and Virend™, a topical anti-viral product for the treatment of herpes. Shaman also has continuing programmes targeted at identifying novel compounds for use against fungal infections. So far two antifungal candidates have been discovered, while investigations into native treatments for diabetes have also generated a number of promising leads.

However, while the indications from ethnobotanists are encouraging, the news is not all good. The identification of plants which yield valuable therapeutic agents, may well lead to serious problems of over-harvesting. In addition, further problems associated with the exploitation of traditional communities are likely to occur where less scrupulous researchers are involved. Providing solutions to these problems will not be easy, requiring the development of both legal mechanisms and ethical codes, to protect traditional peoples' knowledge and their natural resources. Fortunately, ethnobotanists in the UK, the US and elsewhere, are currently working to provide effective solutions. If they succeed, the global population may gain from the long-term benefits of traditional medicine, and other ethnobotanical knowledge.

Cath Cotton

Foxglove (Digitalis Purpurea) has been used in the treatment of heart disease since the formal discovery of its biological activity in 1775. The eighteenth century physician William Withering initiated research into this powerful drug which is still in common use amongst heart sufferers throughout the Western world.



gig: terrorvision + honey-crack + cecil^{vik}

Would you use a geriatric male name to christen your band? I certainly wouldn't and yet that's what young Scousers Cecil have bewilderingly chosen to do. What next - a band called Bert And The Carpet Slippers?

Thankfully, their music is neither old-fashioned nor confusing. It's not particularly original either but the band's cohesion and confidence breathes an air of superiority on to their crashing, guitar heavy, agit-rock. Not that they are averse to having a good time. Like their ex-government minister namesake, Mr. Parkinson, they like to play around too. In one memorable moment, an eightish-year old girl makes it on to the stage ("an errant Cecilia", as my partner put it) and is paraded on top of the singer's shoulders for the rest of the song. They can rest assured that she wasn't the only new fan they made tonight...

Unlike Cecil, Honeycrack's name perfectly encapsulates their sound. Sweet, thick vocal harmonies meet with splintering guitars to create a paradoxical, aural feast. The likes of 'Gun', 'Five Minutes' and new single 'Go Away' are wonderfully exuberant, melodic blasts that provide a forum for the band to show off their impressive vocal talents and impeccable musical timing.

Ex-Wildheart men, Willie and CJ have brought the tuneful, adrenaline scuzz of their previous band and poured layers of pop on top. Tonight they look even happier playing on stage than the hundreds of fans who are bouncing along to their music. Multi-racial and multi-talented, Honeycrack look to have a promising time ahead.

Headliners, Terrorvision have already had great times, will have even greater times and tonight gave us, yes, a great time. I must confess that tonight's show served to allow me to re-discover a band that I had practically forgotten that I liked. It took all of about ten seconds for the memories to come flooding back, however, as they launched headlong into 'Pretend Best Friend' and literally the whole of The Astoria went mental in approval.

To say that Terrorvision's fans adore them would be an understatement on a par with saying that this year's Rag total was somewhat meagre. And with the seemingly perpetual stream of fine songs that they come up with it's perhaps not surprising. 'American TV', the self-explanatorily titled 'New Polic(e)-y One', 'My House' and the prophetically named 'Discotheque Wreck', to name but a few, are all rock songs that are everything that good pop songs ought to be - fun, catchy and immediate. But then herein lies Terrorvision's secret of success.

They aren't perfect, mind. They close the main part of their set with 'Oblivion', a song which is too cheesy even for my accommodating ears and contains lyrics, which to me, sound ignorant and somewhat arrogant.

But I am not left with a sour taste in my mouth. They encore with the mellow, and tonight un-stringed, 'Some People Say'. It's an appropriate ending to an impressive performance and leaves the crowd happy, and with no cares in the world, except for the worry over how a band whose singer wears such hideous green trousers could possibly have entertained them that much.

album: teen angels - daddy^{mr. happy}

This is one of Sub Pop's newest signings and they set out their stall from the opening track, 'Rawhead'. Imagine Mudhoney at their peak with a female Mark Arm. This is perfect punk/grunge packed with energy and, more importantly, humour. There are twelve tracks that last just under half an hour. As the last track, 'Jack S**t',

finishes you are left wondering what has just hit you.

If this album had been released during the 'grunge' era then the Teen Angels would probably have been more famous than any other all-girl, guitar band. Move over Courtney, the Teen Angels have arrived. If you are going to buy a noisy guitar album this year then make sure it's this one. I can't recommend it enough. (10)

album: the bucketheads - all in the mind^{max}

Kenny 'Dope' Gonzales is one half of Masters at Work. They are not only responsible for producing supreme house music, but also for mixing a great many tracks by famous artists such as Bjork and Julio Iglesias (although why anyone would want to shout about working with that sad old man is anybody's guess). Here, in his solo capacity as The Bucketheads, Kenny has produced an album of good, but not truly great dance music.

You're probably thinking that you couldn't bear to sit and listen to an hour of rehashed '70s disco tracks. I would agree, but if you listen to this album then you won't have to. The two singles

do stand out like Pavarotti at a weight-watchers' meeting ('Got Myself Together' clocks in at just over eight minutes, but thankfully we are only subjected to an edit of 'The Bomb' rather than it's full fourteen minutes), but the rest of the album is a pleasant mix of jazz, funk and great drum beats, utilising some old tracks by artists as diverse as Chicago and Level 42. Indeed, one of the highlights is the blissed-out 'Time and Space' that uses the Level 42 tune, 'Starchild'.

This is a good album then, and one which has far surpassed my expectations. It is not jam-packed with house anthems or many future single releases, but it is ideal background music since it allows you to enjoy it without you having to pay it too much attention. (6)

singles: ^{h Ea}

natacha atlas - yalla chant
Standard Trans-Global
Underground affair, but when it's this good I don't care.
Great range of mixes too. If only I knew what she was on about.

whipping boy - when we were young
Quite possibly the shortest c.d. I've ever heard. Oh, and the song's pretty good too.

gavin friday - you me & world war III
This has trite vocals and an oh-so Eighties sound which The Grid very sensibly discard to serve up two great slabs of beeps, beats and twiddly bits. And the B-side's not bad.

flavour - glitter lips
Boring, repetitive, formulaic. Next...

heavy stereo - chinese burn
I swear, I've heard that riff before. I'd stick to the '70s bands that this lot feebly attempt to rip off.

jubilee - so sad about us
Great, bouncy, poppy tunes, and only about a decade old. Still, it's cool to be retro!



mm.ambisonic - angelic/weatherman
Angelic (!) vocals and seriously laid back with minimal grooves. Buy it.

cable - seventy
It's not like I have anything against rock bands fronted by men that can't sing, just this one...



v
i
s
i
o
n
s

o
f

h
o
n
e
y

a
n
g
e
l
b
u
c
k
e
t

xii

listings:

simply red - 2 to 5 feb - dock-lands arena - £25
 david devant and his spirit wife + delicate vomit - 2 feb - borderline - £5
 the ramones + scarfo - 3 feb - brixton academy - £12.50
 the grifters - 3 feb - rough trade shop, covent garden - free
 kirsty maccoll + billy bragg - 3 feb - conway hall - £7.50
 dissident prophet - 4 feb - fulham swan - £4
 courtney pine - 4 feb - rhythemics - £10
 angel corpus christi + bis - 6 feb - water rats - £3.50
 placebo + scheer + evil superstars - 6 feb - dingwalls - tbc
 send no flowers + three colours red - 6 feb - camden palace - £3
 shelter + above all - 6 feb - garage - £6.50
 cleo laine and john dankworth - 6 feb - cafe royal - £25
 mcalmont - 7 feb - garage - £7
 nick heyward - 7 feb - dingwalls - £7
 northern uproar - 7 feb - garage - £8
 spain - 7 feb - borderline - £5
 procol harum - 8 feb - barbi-can - £7.50 to £17.50
 maria mckee - 8 feb - garage - £8
 frank black + wannadies - 9 feb - astoria - £8.50
 black grape + eusebe - 9, 10 feb - brixton academy - £12
 the godfathers - 14 feb - la2 - £7.50
 mike flowers pops - 16 feb - forum - £10
 babylon zoo - 16 feb - la2 - tbc
 echobelly - 17 feb - forum - £8.50
 eric clapton - 18 to 20, 22 to 24, 26 to 28 feb, 1 to 3 mar - royal albert hall - £23.50, £18.50
 baby bird - 19 feb - dingwalls - tbc
 martin stephenson - 20 feb - jazz cafe - £8
 the wannadies - 22 feb - garage - £6
 saw doctors - 23 feb - shepherds bush empire - £12

gig: teenage fanclub + drugstore^{nick}

Not having had the pleasure of witnessing Drugstore live, I didn't really know what to expect. As they ambled on stage, I thought to myself, "It's going to be shouty". Thankfully, the reality was that the band only lightly slapped us in the face with some finely crafted tunes.



They managed a convincing performance whilst avoiding such potential disasters as a cellist joining them on stage. Only The Auteurs usually get away with that sort of thing, but it worked for Drugstore too. There is obviously a tunesmith at work here. There are riffs that you won't forget quickly and that are easily hummable and, as they soared above the crowd, I began to think that this lot could get somewhere.

Energy and enthusiasm abound from the singer, who is all wide-eyed and happy, and towards the end of the gig the subdued gig-goers appear to actually start enjoying themselves with that strange 'sway' that afflicts those who stand towards the back and attempt to dance.

I enjoyed Drugstore's performance although their songs do lack the energy for a really good gig. You could say that their zero moshing material means they are probably suited more to wallpaper than wildness.

I like Teenage Fanclub. In fact, I more than just like them - I think that they're smashing. Tonight, the Fannies have to work for their money. After being assaulted by the absolute dross of The Flaming Lips, the crowd are initially just a little unreceptive. The band admit to the crowd, after some bizarre tangential reference to slippers, that they haven't played for a month, and ask whether it shows. Does it heck. Massive enthusiasm, big talent and material from all of their LPs combine to produce an energetic and thrilling spectacle.

It takes about seven songs to get the whole of the crowd going but 'The Cabbage' soon sorts them out. 'Neil Jung' then sees the kids going wild and into the major crowd-surfing zone. 'Verisimilitude', 'Mellow doubt' and 'Sparky's dream' round off the set and Norman ruins the



encore by saying that the band will come back anyway.

Thankfully, the best is saved 'til last with one of the finest debut singles ever, 'Everything flows'. The set

finishes with Norman going completely bonkers and cutting all the strings off the band's guitars with a pair of pliers. Then, in best anti-rock 'n' roll style, the boys carefully lay down their guitars and wander off - no Fannyng about.

album: tortoise - millions now living will never die^{jim}

A tricky one for me to describe, this. It's guitar-based, which makes a change, but it's on a mellow trip moving towards psychedelia in places. It lies somewhere between the Ozric Tentacles and Stereolab (they share the latter's producer) and is the sort of music that could inspire you to mention, well, erm... sonic cathedrals really.

There are only six tracks on this promo copy. They do last for a full forty-five minutes but they tend to merge into one another after a while. This is not exactly uplifting music and is probably an acquired taste. It worked well for me on a boring Sunday night in, but it did grate slightly at other times, especially the bit that sounds like the c.d. is jumping (it caught me out twice).

Nevertheless, if experimental '90s prog rock tickles your fancy, then this one is for you. (6)

album: frank black - the cult of ray^{ian}

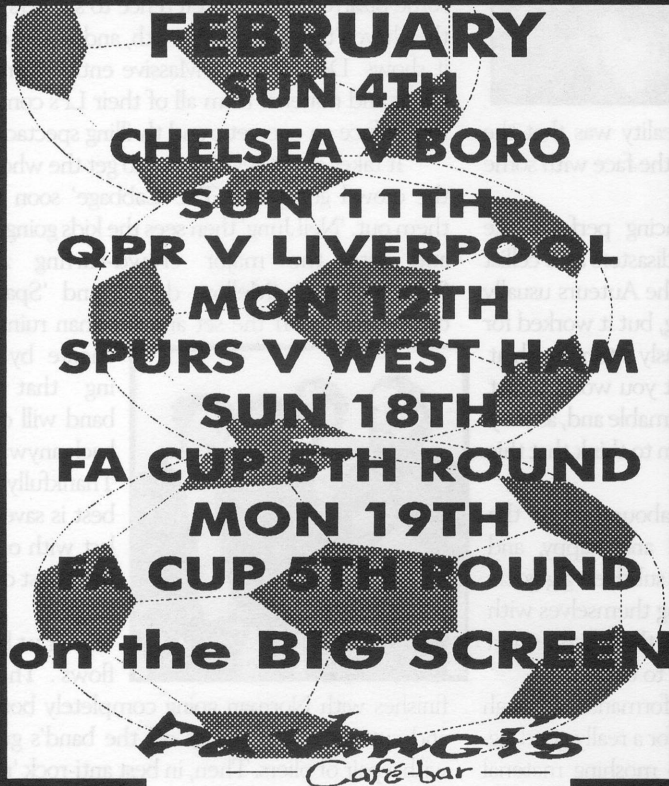
Yipe, it's Frank Black - former leader of the Pixies, former King Of Indie Rock and the foster parent to those not so well known Seattle bands like Nirvana. This album marks his return after his solo debut, 'Teenager Of The Year'.

The opening track, 'The Marsist', is spectacular but the current single, 'Men In Black', sets the tone of the album. The whole album is like a canvas for Black to try out his different musical ideas. This has resulted in an album filled with numerous variations and without a single song that can fully represent it. Black has a fairly unremarkable voice and the album occasionally dips into the background. The music is generally unremarkable and often sounds like your typical indie bands.

So does this mean that the man himself has lost it? On the contrary, this is one album that I will often return to. 'Punk Rock City' and the reflective 'I Don't Want To Hurt You' provide some of the many interesting highlights. Black's unconventional music stays in your head after hearing them without you knowing why. Baby Bird comes to mind as a comparison but Black sounds like he's trying to project as much as possible without having layers of music cluttering things up. That either means that he couldn't write them in the first place or felt it was unnecessary.

While this will only sell in the thousands (hopefully), you will be grateful that you've actually heard it. 'The Cult Of Ray' is a body of work that does not make immediate sense. Then again it doesn't have to when you reach for the play button again after the cd stops spinning. (8)

STANDING ROOM ONLY



FEBRUARY
SUN 4TH
CHELSEA V BORO
SUN 11TH
QPR V LIVERPOOL
MON 12TH
SPURS V WEST HAM
SUN 18TH
FA CUP 5TH ROUND
MON 19TH
FA CUP 5TH ROUND
on the BIG SCREEN
Da Vinci's
Café bar

hed
on
i3m
fri
2nd
10-2
full on
sounds
£1/tree
icu

• FRESH HAIR SALON • the best student offer in london!



Call: 0171 823 8968

GET READY - GET FRESH!

CUT & BLOW DRY

BY OUR TOP STYLISTS

£14 LADIES

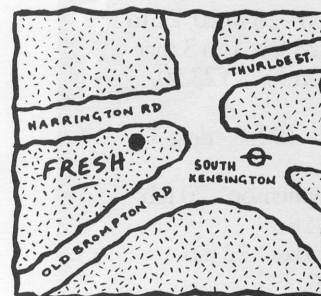
£12 MEN

Normal price £28!

**where to
find us!**

**15A HARRINGTON ROAD,
SOUTH KENSINGTON,
LONDON SW7 3ES**

*1 minute walk from
South Kensington Tube Station!!*



Access, Visa, Mastercard, Cash, Cheques

celluloid guide: this week

odeon kensington

0426 914666

father of the bride 2

1.55, 4.30, 7.05, 9.40

the innocent sleep

2.20, 4.45, 7.10, 9.35

waiting to exhale

3.50, 6.40, 9.30

seven 12.40, 3.35, 6.30, 9.25

les misérables

1.25, 5.05, 8.45

dangerous minds

2.30, 4.55, 7.20, 9.45

tube; ken high street. £6.50, £6,

£3.50 before 5pm

mgm fulham road

0171 370 2636

heat

1.10, 4.40, 8.20

leaving las vegas

1.30, 4, 7, 9.35

sabrina

12.55, 3.35, 6.25, 9.10

waiting to exhale

1.10, 3.50, 6.35, 9.20

babe

12.40, 2.50, 5

withnail & i

7.10, 9.40

tube; south ken then bus

£6, £3.50 students and before 6pm

mgm chelsea

0171 325 5096

father of the bride 2

1.20, 4, 6.45, 9.30

seven 12.50, 3.30, 6.20, 9.15

goldeneye 12.45, 3.30, 6.15, 9.05

tube; sloane square then bus

£6, £3.50 students and before 6pm

renoir 0171 837 8402

tube; russell square

£6, £4 1st perf; £2.50 students

minema

0171 369 1723

angels and insects

3.30, 6.30, 8.45

tube; you can walk it

£6.50, £4 matinees

prince charles

0171 437 8181

friday

french kiss (£1.75)

1.30

apollo 13 (£1.75)

4.00

leon 6.45

pink floyd: the wall

9.15

rocky horror (£6, concs £3)

11.00

saturday

before sunrise

1.15

clueless

3.20

french kiss

5.30

apollo 13

7.45

apocalypse now!

10.30

tube; leicester square

£2 all seats

film: **heat** sarah turner

Don't ask me about the beginning of this film, because I haven't a clue what happened! Having arrived more than ten minutes late, I spent the next couple of minutes wondering how I'd managed to get through the door - the ticket said, 'strictly no admittance after the film begins'.

When I did finally look up at the screen, the first thing I saw was three men being shot to death by someone in a plastic white mask which wouldn't have looked out of place in *Star Wars*. Oh great! This really wasn't worth running all the way from the tube station to see!

As it turned out, I was wrong; it was worth it, and I was pleasantly surprised.

The film is set in Los Angeles, where Neil McCauley (Robert DeNiro) and his sidekicks Nate, Michael and Chris (Val Kilmer) plan and carry out a series of robberies. McCauley is a professional criminal who protects himself by not getting too close to anyone: "There's nothing in

my life that I can't walk away from in 30 seconds flat when the heat is around the corner".

From the outset, he and his gang are pursued by Vincent Hannah (Al Pacino), a detective in the LA police department. Like McCauley, Hannah is dedicated to his profession and, apart from a crumbling third marriage, doesn't have much of a life beyond it. He doesn't even let his step-daughter's attempted suicide get in the way of his work.

This film is about the power struggle between the two: neither will give up trying to get what they want, and right up until the final scene we're still wondering who is going to end up killing who.

Although almost everyone seems to get hurt (mentally and physically), shot or beaten up, the film rarely gets boring. My only criticism is that it has a feeble ending, but I doubt that I could have thought of a better one. In short, this film is good but not brilliant, but definitely worth going to see.



video: **mad bull 34 part 1** magpie

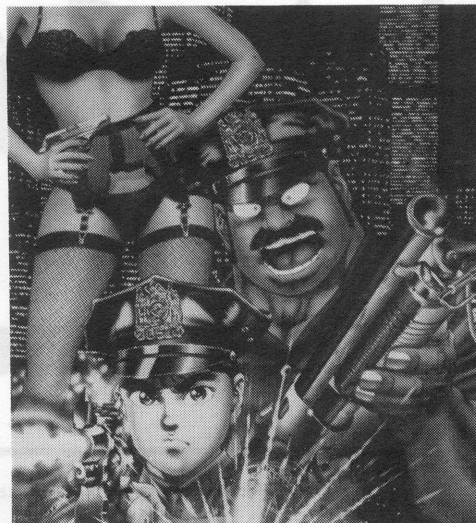
Strange title, strange story - yes, it's Manga. If you've been brought up on Mickey Mouse and Tom & Jerry, Japanese anime will definitely shock. No more flan fights, this is direct from Walt Disney's alter ego.

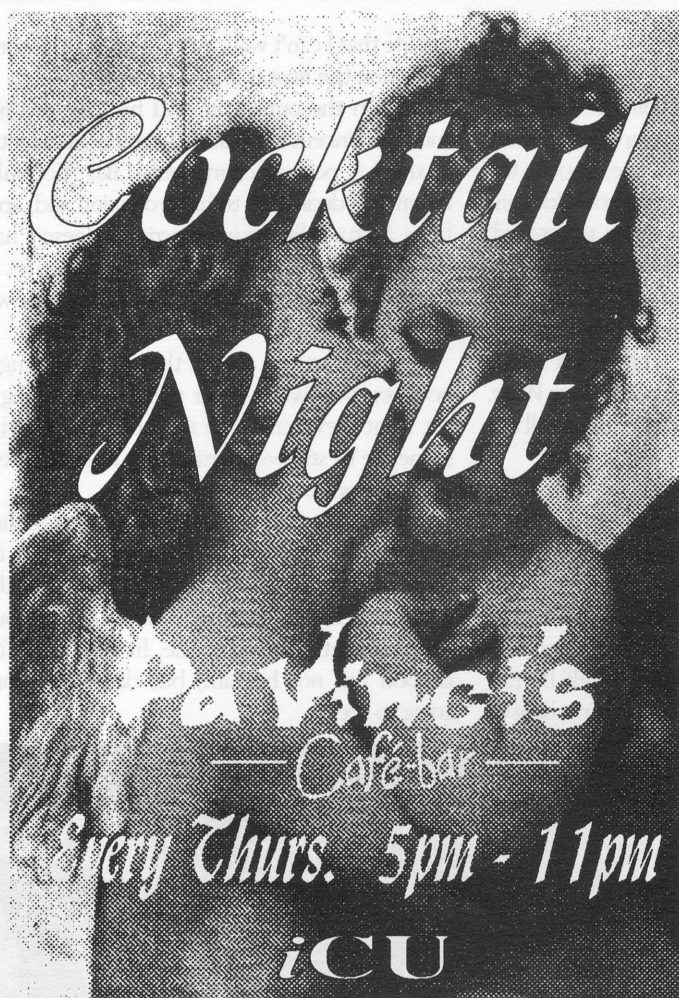
Part 1: Scandal is a tale of sex, drugs, violence, corruption and Diazaburo, a new recruit to the 34th precinct of the New York police department. Diazaburo's first day would have been a gentle introduction but for his new partner, Mad Bull, one of those cops who shoots first but can't ask questions later because the unfortunate villain no longer has a head, let alone his ears (sounds gruesome). When Diazaburo isn't ducking gunfire, he's reluctantly following Mad Bull to a succession of cat houses, and it soon becomes apparent that his partner is running a protection racket.

Mad Bull 34 is certainly a violent cartoon

and not one of the more inspiring Manga titles. There are plenty more videos available with far better animation and story lines, but this being part one of a series, things may improve later.

In the shops from February 5th £9.99





*Cocktail
Night*

Da Vinci's
— Café-bar —

Every Thurs. 5pm - 11pm

iCU

'BUST-A-GUT COMEDY CLUB

matt

Welcome
with Ross Noble

"definitely not to be missed"

Fri. Feb. 2nd.

£2.50 / £2

Doors 8pm

STILL
AVAILABLE
TICKETS

Da Vinci's
— Café-bar —

8pm EVERY TUESDAY

bar

TRINIA

**£50 CASH PRIZE
& more !**

ST/

SUPPORTED BY STA TRAVEL, IMPERIAL COLLEGE TEL: 0171 581 8882

ICU ENDS JAZZ & ROCK & ONE APPALLING JOKE PRESENT

ABANDON

4 COLLEGE BANDS

HERB
URBAN SPICE

FOLD

NEITHER BOTH

FRI 9~~TH~~ FEB

ICU. 8PM

FREE B4 9PM / £1 AFTER
PLUS

**COMMON PEOPLE INDIE NIGHT
& ROCK IN UDH**



friday

2

february

Rag Meeting

1.10pm Ents Lounge. (R)

Islamic Society

1pm. Southside Gym. Friday Prayers. (R)

Pakistan Society

3 - 5pm. Basketball, union gym. Contact Kashif, Aero II, k.ahmed@ae.ic.ac.uk. (R)

Fitness Club

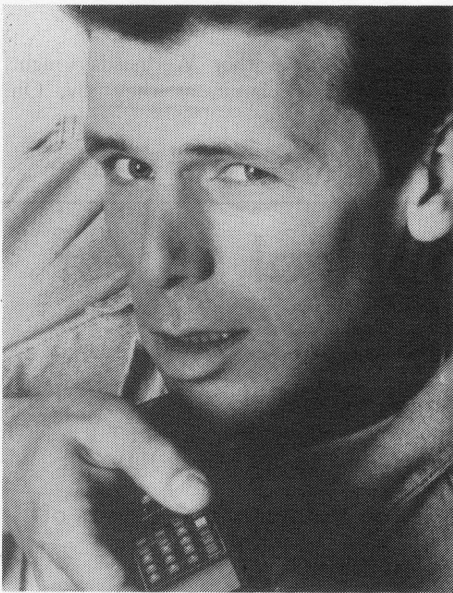
5.30pm. Advanced Step Aerobics. (R)

ConSoc

7.30pm Churchill Arms (Ken. High Street) for Beer/Thai cultural experience.

Ents

This week's top acts at the "Bust-A-Gut" Comedy Club are Ross Noble and Matt Welcome (*below*). Matt's act is one of the funniest and fastest on the circuit, and there's an Open Mic slot. If you're among the first 20 in, you get a free T-shirt as well. All this for just £2.50 or £2 with entscards. Doors are at 8pm.



f r i d a y

saturday

3

february

Gliding Club

Gliding at Lasham Airfield. For more information contact gliding@ic.ac.uk. Come to Thursday meeting first. (R)

Consoc

6.30pm Trip to English National Opera-Bizet's 'Pearl Fishers'. Cost £5.00.

Ents

The second stages of The Five Nations, with England v Wales, & Scotland v France live on DaVinci's big screen. Bar open from 1pm.

s a t u r d a y

skatesoc

The closest you will get to flying

To most people, even expert skaters, the idea of skating on ramps is a daunting one. But a few of us from the Imperial College skate club braved the winter weather at the weekend and travelled to Rom Skate Park in east London. Here we found a bewildering array of ramps, bowls, snake runs and half-pipes, which all looked very scary. Thankfully the locals were friendly and showed us the ropes, and within no time at all we had all got the hang of it - sort of.

The experience of skating ramps is effectively like standing up on a rollercoaster that has no guiding wheels, no track and no safety harnesses. Needless to say we all were wearing a great deal of padding. The highlight of the day was when we all plucked



up the courage to try the "Sugar Bowl" - a twelve foot deep swimming pool with a long slope going into it. What made this bowl so lethal was that the apex went past the vertical - and formed an overhang, so to

make it out we needed to get up to a ridiculous speed and have no fear at all. However thankfully there were no bones brokenyet. The skate club run a number of these weekends now, as well as other events, including the popular night skates and street hockey. If you have any queries or would like to join one of our outings please come to our meetings in Southside Lounge at 12.15 on Wednesdays, or write to j.howard@ic.ac.uk or a.cinelli@ic.ac.uk.



the week ahead

monday

5

february

Student Industrial Society

12 - 2pm. Table Tennis room, Union building (R)

Fitness Club

12.30pm. Beginners body toning (45 mins)
5.30pm. Beginners aerobics
6.30pm. Intermediate aerobics.
Southside Gym. (R)

Jewish Society

12.20pm. Senior Common Room. Bagel lunch. holocaust exhibition is in the JCR all day on Tuesday 5th. (See right)
For more information, contact j.soc@ic.ac.uk.

Ski Club

12.30 - 1.15 pm. Southside Upper Lounge. (R)

ArtSoc

12.30 - 1.30pm. Union Dining Hall. Come and sign up for our many trips to Musicals. (R)

Concert Band

5.15pm. Great Hall. Any ability. (R)

French Soc

6.00pm Chemical Engineering Lecture Theatre 3. *Betty Blue* (Original name 37°2 le Matin).
Free for members.

Cross Country

5.00pm. Circuit training. Union gym. (R)

Squash Club Night

8 - 10pm. Sports Centre. (R)

IC 2nd Orchestra

7 - 9pm. Great Hall. All welcome. (R)

Ents

8pm Davinci's. Standing Room Only - More FA Cup Football: Queens Park Rangers v Chelsea.

m o n d a y

tuesday

6

february

Cathsoc

12.00 pm. Bagritt Centre, Mech Eng. (R)

Yacht Club

12.30pm. Lecture Theatre 2, Physics. (R)

Afro-Carib Soc

12.30 - 1.30pm. Room G02, Materials dept, RSM. All welcome. (R)

IC Sailing Club

12.45 - 1.45pm. Southside Lounge. (R)

Youth Hostelling Association

1.00pm. Southside Lounge 'Take a walk on the wild side'. (R)

AudioSoc

1.00pm, Southside Lounge. (R)

Photo Soc

1.00pm. Southside Lounge. (R)

Circus Skills

5 - 8pm. Ents Lounge. sdh@ee.ic.ac.uk (R)

Fitness Club

5.30pm. Advanced aerobics. (R)

IC Bridge Club

6pm in the Clubs Committee Room. (R)

icsf -7pm in STOIC Studios.

<http://www.ph.ic.ac.uk/moontg/> (R)

ConSoc

7.30pm Beer/Thai Cultural Evening. Churchill Arms (Kensington High Street)

IQ

7.30pm. Further Info: pink-help@doc.ic.ac.uk or <http://pink.doc.ic.ac.uk/IC/> (R)

Canoe Club

7pm. Beit Quad. All levels welcome, and free instruction.

Opsoc

7.30pm UCH. Sandy Wilson's *The Boyfriend*. £4 comcessions and students.

ICCA

8.15pm. Weeks Hall basement. Soup run for the homeless. (R)

Ents

8pm DaVinci's for Dan, Dan the trivia man, and his big cash prize return for Bar Trivia. Winning £50 (courtesy of Sta Travel) or a crate of beer, and get your thinking caps on.

After Dark

8 - 11.30pm Ents Lounge. Admission is £1 for a night of swing, hip-hop and jungle with the African Caribbean society.

t u e s d a y

wednesday

7

february

IC Sailing Club

12.15pm. Meet outside Southside, go sailing. (R)

Skate Society

12.15pm. Southside Lounge. Contact Alex a.cinelli@ic.ac.uk, 0171 352 9111 for details. (R)

ConSoc

1 - 2pm Jonathan Aitken MP (South Thanet). Room 542 Mech. Eng..

Wargames

1pm Table Tennis room.

Fitness Club

5 - 6pm. Southside Gym. Intermediate/Advanced step class. (R)

Squash Club

3.20 - 5.20pm. Sports centre. 'Club Night' (R)

IC Symphony Orchestra

7 - 10pm. Great Hall. (R)

Ents

8 - 1am. It's another Wednesday night, another Frolik! Game, as they say, On! Midnight bar.

w e d n e s d a y

Special Guest Lecture

Wednesday February 7th at 1.00 pm in Physics (Blackett Laboratory) LT 1.
Professor Sir Michael Atiyah, OM. PRS.

"The Mathematics & Physics of Knots"

Professor Atiyah is from Trinity College, Cambridge and is President of the Royal Society.

next diary
deadline:
noon,
February
5th

the
week
ahead

thursday 8 february

Fitness Club

12.30pm. Die Hard circuit training
5.30pm. Beginners aerobics. (R)

ConSoc

1pm Southside Meeting. email consoc@ic.ac.uk <http://www.su.ic.ac.uk/clubs/societies/scc/consoc/home.html>

Gliding Club

1pm. Aero 266. (R)

Mountaineering Club

7pm. Social, Southside Upper Lounge. (R)

Yoga Soc

6.15 - 7.45pm, table tennis room. Beginners' Kunalini yoga class. More information from mpn@doc.ic.ac.uk, ex 48237. (R)

Christian Union

6.30 - 7.45pm. SCR in the Union. (R)

ICCAG

8.15pm. Weeks Hall basement. Soup run for the homeless. (R)

Skate Soc

Night Skate - everyone welcome. For more information phone Alex on 0171 352 9111 or email a.cinelli@ic.ac.uk (R)

Ents

5 - 11pm. "In Society, ICU's Cocktail Night is renowned for it's excellence".

Cocktails in abundance and not a Ferrero Rocher in sight.

t h u r s d a y

Jewish Society

Imperial College is to hold a one day Holocaust education event in the union building on 6 February 1996. From 12.00-7.00, a touring exhibition entitled Another Time, Another Place, will be on display in the Ents lounge. This succinct and graphic display sensitively tells how Europe's Jewish population was tragically wiped out during the Nazi era. Hitler's antisemitic ideology, the use of propaganda, the formation of the ghettos and the ultimate murder of millions of innocent civilians, all form a part of the most horrific event of our century.

The day is being run by the Beth Shalom Holocaust Education Centre from Newark, Nottinghamshire. Beth Shalom - which means 'House of Peace' - is the first centre in Britain dedicated to teaching about the Holocaust and its implications for contemporary society. It is presently touring university campuses around the country.

At 5.30 in the Ents lounge, Auschwitz survivor Gena Turgel will speak about her horrific experiences under the Nazi regime. At the age of sixteen she was confined to life

friday 9 february

Rag Meeting

1.10pm Ents Lounge. (R)

Islamic Society

1pm. Southside Gym. Friday Prayers (R)

Pakistan Society

3 - 5pm. Basketball practice, union gym. bring trainers.

E-mail Kashif at k.ahmed@ae.ic.ac.uk. (R)

Fitness Club

5.30pm. Advanced Step Aerobics. Southside Lounge. (R)

Ents

It all kicks off at 8pm with "Abandon" with four College bands playing: Herb, Urban Spice, Fold & Neither Both. The first band goes on stage at 8.30. All this is FREE before 9pm, so get in early. After that, the Common People collective will take over to fill your heads with indie pleasures. If you like your music a bit harder then there's ICU's inaugural Rock Night in the UDH.

f r i d a y

AUSCHWITZ SURVIVOR

Gena Turgel

tells her amazing story of resistance and survival under the Nazi regime.
(Ents. Lounge 5.30 PM)

6 February

Also see

'Another Time, Another Place'

An exhibition on the Holocaust

12.00 PM - 7.00 PM Ents Lounge

An I.C.U. J.Soc event for SCC week

in the Cracow ghetto following the German invasion of Poland in 1939. During the three years which followed the liquidation of the ghetto, she spent time in Plaszow, Auschwitz and Bergen-Belsen concentration camps. Upon gaining her freedom from Bergen-Belsen in April 1945 Gena married Norman Turgel, one of the British officers involved in the liberation of the camp.

This is a rare opportunity to meet a holocaust survivor and hear her first hand testimony. This story of the resilience of the human spirit in the face of unadulterated evil must not be missed.

stoic

12.30 THE REPORT

A round up of the latest news and views from the College and the Capital. Plus featuring news of the move of the RCSU, a progress report on the BMS building and news of computer thefts Mech Eng.

12.30 LEVEL3

Anarchic entertainment show. Includes news of the latest cinema releases, a preview of new UFO videos and views on the paranormal from our resident psychic, Jean Foster. You can contact us on 0171 59(48104) or e-mail stoic@ic.ac.uk.

Our studio is situated on Level 3 of the Union Building.

French Soc

The French Society is going to the Cézanne exhibition at the Tate Gallery on Wednesday, 28th February. If you are interested to join us for this unique event (subsidised prices), contact j.chevrot@ic.ac.uk.

Michael Foot

The Rt. Hon. Michael Foot will speak on his recent biography of H.G. Wells in the Haldane Collection (Central Library level 1) on Wednesday 14 February at 5.30pm. Admission is free by ticket available in advance from the Haldane Office.

The talk will be followed by a small reception, for which there will be a limited number of free tickets. Please apply to Janet Smith, Haldane Librarian (ext. 48812, email j.m.smith)

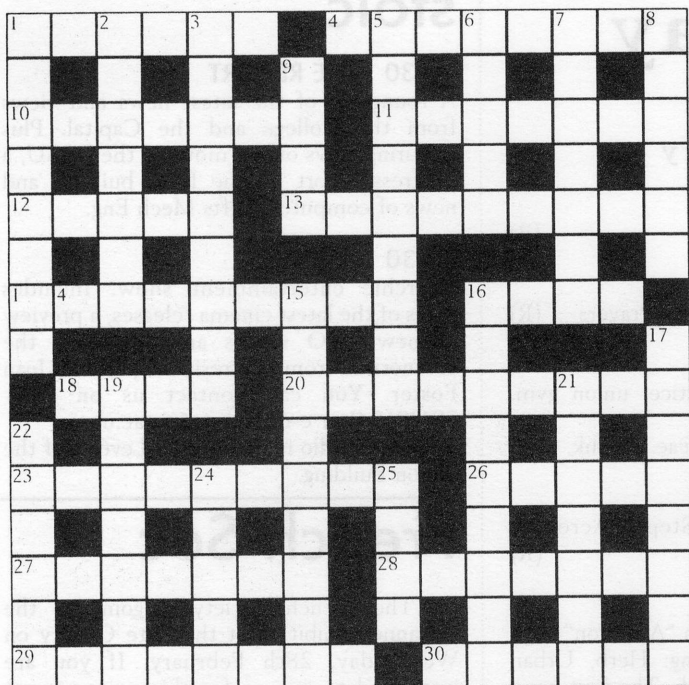
PhotoSoc

On the 26th February we are having our Annual Photographic exhibition at Imperial. We are planning to show you our different contemporary ideas through our photographs. For those of you who wish to exhibit photographs with us or just socialise, it is not too late to join our society.

Meet us in Southside on Tuesdays at 1.00pm or e-mail nchadborn@ic or kal@doc.

the
week
ahead

Crossword by Catfish



Across:

1. Cover imitation about article (6)
4. Smuggled bags to avoid searches (8)
10. Acquire job with computers, perhaps? (7)
11. Cats have a quarter that is about the same, perhaps (7)
12. Come back about the dog (5)
13. It's most important to have an equal quantity (9)
14. He can't sleep in - methods of first killer have changed (9)
16. Something which burns might melt into one (4)
18. Carry it to the bookmaker (4)
20. Attack on glut has some effect (9)
23. Enquires about the strange rites of stars (9)
26. Not out for a point in training, but useless (5)
27. Skimmed stones past many, until they turned (7)
28. Thankless person is tearing around (7)
29. This sort is thrown into pigeonhole... (8)
30. ...while he writes about trees (6)

Down:

1. Continued to complain about evidence of planes (8)
2. A section is upset at adverts (7)
3. Upcoming events for lightweight (9)
5. Removes from sailors' stomachs! (9)
6. Small increase in temperature brings out the bees? (5)
7. Young ones embrace her - they're angels (7)
8. This hustle might disturb the detective (6)
9. Go past the rubbish bin (4)
15. Old battleships flatten the periphery (9)
16. Bloody ducks are birds! (9)
17. Good man says it with hesitation (8)
19. Expose harvest on rocky cliff (7)
21. Weapon quality accepted in France (7)
22. Mother's bed used as symbol (6)
24. More licenses, in part, are left over (5)
25. Something which is given first for a drink (4)

Solution to issue 1047's Crossword:

Across: 1.Ambulance, 5.Lunch, 8.Raises, 9.Peasants, 11.Netball, 12.Imitate, 13.Urn, 14.Spender, 16.Gags, 19.Slab, 22.Leading, 25.Roe, 26.Reverse, 27.Needles, 29.Innuendo, 30.Facile, 31.Tasks, 32.Rare event Down: 1.Apron, 2.Bristles, 3.Leeward, 4.Evening, 5.Lasting, 6.Ninjas, 7.Hastening, 10.Blur, 14.Spearmint, 15.Eta, 17.Ape, 18.Hillside, 20.Largens, 21.Breeder(?), 22.Lens, 23.Average, 24.Events, 28.Sleet

Careers Information

"Assessment centres - what to expect and how to cope" is a short course for all on Wednesday 7 February in Huxley Room 343 from 2 - 4 pm. Sign up in the Careers Office.

Milkround Closing Date Six is on Monday 5 February. Hand in your applications on the day by 4pm. Details of interviews are put up on the notice board outside the Careers Office a few days before the interview date.

Summer Vacation Training opportunities are now available on the database in the Careers Office. Apply to UROP for research opportunities.

For more information and

careers advice come to the Careers Office, Room 310 Sherfield Building, which is open between 10am and 5.15pm Monday to Friday.



Stop Smoking

The stop smoking group starts on 22nd February at 12.15pm. The group will meet weekly for five weeks, and each session is one hour. There's no need to change your smoking habits before you come. Contact Margaret Reddoch at the health centre, ex 49393 for more information.

Room to Rent

A room in a student flat in Bayswater is available at £70 per week.

Contact Adam on 01883 743 720 for more information.

Every Tuesday

Resident D.J. ZERO G (Destiny)
D.J. 419 (Brian H.)
with Guest D.J.'s Every Week

AfterDark
Union Lounge

Vibes to Soothe the Soul

Spread the Word

Location : The Union Lounge
Imperial College Union,
Prince Consort Road,
South Kensington

Tax : Non-Members : **1 Pound**
Africab Soc Members : **50p**

Time : 8.00 pm-11.30 pm

A Cheap Night Out

The Perfect Pre-Nightclub Jam

Exclusive Membership Available to AFTERDARK
Membership Entitles Free entrance Every Tuesday
Membership is — 12 Pounds

SABBATICAL ELECTIONS

OK, Listen up! If you want to become an ICU Sabbatical then follow these instructions: Read the job descriptions on this page. Then sign the nomination papers which will be displayed on the ICU noticeboard, opposite the Union office, from Monday 5th Feb – Friday 16th Feb. You'll need one person to nominate you and twenty others to second you. Then comes the hard part – you have to convince people to vote for you!

Felix Editor & Print Unit Manager

For some reason, this sabbatical position ended up as two jobs instead of one, but since I reckon I get to have a lot more fun than the other three, perhaps it's worth not being able to do anything else with your life.

The print unit manager bit involves running the Union's in-house printing facilities. That means being responsible for a trading outlet with a fairly sizeable turnover: working with ICU's professional printer, you do everything from VAT returns to rolling up your sleeves and working with greasy bits of equipment (!). Oh, and you get to do lots of photocopying as well.

Contrary to what many seem to think, editing Felix does not mean you write the entire paper: it's about managing a team of people for whom Felix is their big extra-curricular activity, so you have to be prepared to 'work' most weekday evenings. More than anything else, you need to be a person who can inspire and encourage as many people as possible to contribute, because you're certainly not going to have time to do it all yourself. And quite frankly, it would be a whole lot worse if you did. There's no reason at all why you should be currently involved in Felix, but a good knowledge of desk-top publishing (we use QuarkXPress) is essential.

So somehow you get an issue out every Friday (which is more often than practically any other student newspaper in the country, so don't underestimate the size of the task). And you get a unreasonable amount of complaints and criticism for it, and probably feel you're doing a thoroughly demoralising thankless task. But there's something quite satisfying about returning an hour later to that pile of 600 newspapers you left out, to discover that there are none left.

Rachel Walters

Deputy President (Clubs & Societies)

Are you going to be the lucky (?) one? If you are thinking of something challenging to do for the next 13 months then have you thought about being a sabbatical? Deputy President (C&S) is a challenging and fulfilling role to take up in the Union. If elected, you will be responsible for the following:

Organising BUSA sports; organising the Freshers' Fair; representing sports and societies to Colleg, ULU, and other outside organisations; sorting out insurance payments; temporary membership; overseeing all the Clubs & Societies; internal room bookings; Union keys; notice boards and poster regulations; e-mail accounts; WWW pages.

You will also have to attend: Disciplinary meetings, Exec, Council, Subcommittee meetings, ULU sports meetings, Refectory Services and Bookstore meetings, Union Finance Committee, College Athletics Committee, South Kensington Users Group, BUSA meetings, College Disciplinary meetings, ULU GUC, BUSA conferences, ULU training and ICU training (phew!).

On top of that you will be part of a team who look after the day to day management of the Union. Teamwork is essential in this job if your year in the Union is going to be successful. You will find yourself mucking in around the office, helping out with carnivals, reception and helping in a multitude of other incidents.

So now you know what goes into the job, why don't you run in the elections and have an interesting and stressful year.

Tim Townend

President

Why on earth would anyone in their right mind want to do this job? It's highly stressful, poorly paid, the hours are long and you will exist in a state of permanent confusion for about 13 months. On the other hand, it's great fun, you get to meet a huge range of people and it's an experience I wouldn't have missed for the world.

As President you represent students to College and to the outside world. This involves sitting on committees arguing the student case and pressing for the best possible facilities for ICU. These committees total about 40 within College, ICU and ULU, with unlimited numbers of outside committees and working parties. This means that one of the most important aspects of the job is the ability to be able to work with staff and students from College and a huge range of other institutions.

The President is also responsible for everything that goes on in the Union, although much of this is delegated to the two Deputy Presidents. This ranges from discipline and staffing to running the elections. Much of the job involves academic affairs and welfare, and students and staff may ask you to raise issues at various levels, or just come to you for advice and guidance. You will often be called in to help with cases at University level, and could find yourself either representing one of our students at an Academic Tribunal, or sat on the other side of the table on the judicial panel.

We've tried hard to improve links with other student unions this year, especially those within ULU. The support which Sabbs in ULU give each other has been invaluable to me. You need to work with them to understand that there are a far wider range of issues for students than those which may appear in your year here and that we all need to work together to tackle them. Some of the most interesting and important things I've done this year have been with groups from institutions all over the country.

As you may have guessed by now, one of the worst points about this job is every now and then, having to explain to people what exactly it is you do. I'm still not entirely sure, but if you are interested in running, please, please come and see me with any questions. The things I've mentioned above are really just the tip of the iceberg, and although there are many things you have to do the job is what you make it. Running last year was probably the best decision I've ever made – it's a chance you'll never get again, so don't be scared.

Sarah White

Deputy President (Finance & Services)

So, you want to be a Sabb? Have you seen your psychiatrist about this? Well, while (s)he's working out the cause of the problem, I might as well tell you what you'd be letting yourself in for.

Being DP(F&S) is a bit like climbing a steep, muddy slope with your legs tied together. It's all about high finance, top-level decision making, teamwork, organisation, and ritual abuse (verbal, that is).

You get to be held responsible for the well-being of two million quid. You get to organise the Union Finance Committee, where everyone shouts at each other in a desperate bid to get money. This is your chance to sort out clubs' & societies' finance questions for them, and authorise every bit of expenditure over £500.

The bars, catering, entertainments and bookstore will be your babies to oversee through the Refectory Services, Entertainments and Bookstore Committees, all of which you will organise and run. A fleet of minibuses, games machines and food machines will be your footstool.

The many meetings you end up attending, far too numerous to list here, will leave you with a pain in the diodes down your left side. You will find yourself thrust to the very forefront of the Union's interaction with college as you represent the students as part of the sabbatical team. Many a time you will land up sitting in a hall of residence grilling candidates for the job of warden or subwarden in the accommodation side of your work.

But it is the teamwork within the sabbatical group that will thrill you and tease you the most. You will have to work as a highly organised trio to take the Union one step closer to the new millennium.

Or something like that.

Matt Crompton

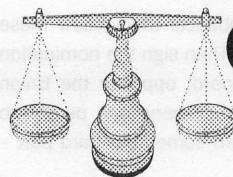
iCU

IMPERIAL COLLEGE UNION

IT'S YOUR UNION BE PART OF IT

ICU reception (left at the top of the stairs on the first floor of the union building) is the place to sort out room bookings and organise hiring out minibuses, amongst other things. At the moment there is a special ½ price offer on booking rooms out for private functions. This is also the place to make use of the fax service, which is charged by the length of time it takes to send rather than by the number of pages, so it's cheaper than elsewhere. You can also get rape alarms free here.

Da Vinci's Café-bar



advice centre

The advice office has negotiated with a local firm of solicitors Aaronson & Co. (308 Earls Court Road, London SW5 9BA) to provide a free legal advice service to Imperial staff and students on Wednesday evenings between 5-6pm. The solicitors are specialists in housing law and immigration, both very relevant areas. If the service is not used, it may be discontinued, so please use it. Initial enquiries should be made via Martin Thomson, the Union Advisor.

IMPERIAL COLLEGE UNION BOOKSTORE

Do you know we can order any book in print? 1,000's of titles are available at the drop of a hat (well, a few days at any rate.)

If you have a fervour for fiction
a penchant for poetry
a gusto for goat-keeping
or if you are quite keen on cake decorating...
there's a book for you.

We can supply your needs (that's why we're here).

Copy Shop

A special favourite for those keen on doing publicity for their club or society, we can photocopy onto coloured paper for no extra charge, and we have special discount rates for big bulk orders.

Come and see us in the north-west corner of the Beit Quad for more information.

iCU Print Unit

Quality printing at unbeatable prices.
Enquire at the Felix Office for details.



FELIX



20-20



RA

Ok, so everyone knows that the Union runs the Union Bar (the name is a bit of a clue) and DaVinci's. But did you know that as well as serving the best value pint in the area, that the Bars department also has several other roles up it's sleeve?

For instance did you know that we can also offer bar facilities at outside functions, (with a weeks notice), we can help organise a Club or Society bar night, & you can win all types of prizes with our special promotions. If you're a sports fan then DaVinci's shows all the terrestrial & Sky sporting occasions on the only big screen in College, and if you like things a bit more sophisticated, we also run a popular weekly Cocktail night. On the other hand, the Union Bar is a haven for Real Ale drinkers, especially in Winter with it's roaring open fire. But if you don't want to drink, there's also a wide range of non-alcoholic drinks available.

Finally, in the near future we will be introducing a games night on a Sunday, so if you want to have a social night playing board games with a group of friends, watch out for the posters.

Apart from ramming the Union every Wednesday & Friday, the Ents. department now have a disco rig big enough for rooms up to 200 people you can hire, with Djs for very reasonable rates.

If you're trying to organise bigger events and need help in bookings, finding acts, equipment etc. then Mark, the Events & Marketing Manager can help you. You can ring him on 48068.

LETTERS TO IMPERIAL COLLEGE UNION, REPLIED TO BY THE STAFF THAT RUN IT.

Air your queries and grievances about ICU via the letters page of *Felix*.

Letters should be taken to *Felix*, (North-west corner of Beit Quad) by 6pm Tuesday February 6th, and on Friday 16th ICU's staff will reply in *Felix*.

LETTERS TO FELIX:

Dear *Felix*

March 1st 1996 sees the return of the annual OSC International Night. The evening begins with a food fair where you can sample dishes from around the world, followed by a cultural show, and the evening ends with a band in the SCR and a disco in the JCR. This is the longest and most successful events held in Imperial each year. Currently the OSC are looking for helpers to ensure the evening runs without a hitch. We are also audition-

ing for a host and hostess to comper the evening. Auditions will be held on 5th Feb between 12-2 pm in the Great Hall. If you would like to help or audition please contact us either via the OSC pigeon hole in the union office or by e-mail. Please let us know before 5th Feb if you would like to audition for comper.

President g.misra@ic.ac.uk

Hon Secretary nb.das@ic.ac.uk

Publicity m.mistry@ic.ac.uk

Deadline for letters in *Felix* 1049: 6pm, Monday 5th February
Please bring your union card for identification.

WE NEED YOU!

Felix needs the following people to join our happy (and mildly famous) team:

Diary Editor – Keep IC in touch! Involves a couple of hours work on Mondays or Tuesdays.

Sports Editor – Proudly report our sporting teams illustrious triumphs. Wednesdays evenings, ability to read drunken handwriting helpful.

Feature Writers to inform & entertain in <900 words.

THE FELIX WEEK

The indispensable guide for *Felix* contributors and helpers

monday, high noon

clubs & societies

articles deadline

monday 1.20pm

reviewers'

meeting

monday 6pm

letters deadline

monday 6pm

news meeting

tuesday noon

arts meeting

tuesday 6pm

features meeting

thursday night

collating

friday morning

another *Felix* hits the street...

FELIX

FOUNDED 1949

PRODUCED FOR AND ON BEHALF OF IMPERIAL COLLEGE UNION

PUBLICATIONS BOARD

PRINTED BY THE IMPERIAL COLLEGE UNION PRINT UNIT

BEIT QUAD PRINCE CONSORT ROAD LONDON SW7 2BB

TELEPHONE/FAX 0171 594 8072

EDITOR: RACHEL WALTERS

PRINTERS: ANDY THOMPSON AND JEREMY

BUSINESS MANAGER: JULIETTE DECOCK

COPYRIGHT FELIX 1996.

ISSN 1040-0711

student fees

It was inevitable, I guess: we have had a Conservative government for the past 17 years, after all. But regardless of your political disposition, it could never have been possible to have the massive increase in higher education that we've seen over the past few years without students having to pay part of their own way. (Apparently you would have to put 7p on the flat rate of income tax if you were to return grant levels across the board to the level they were in 1979.)

I don't particularly think that charging students a one-off £300 lump sum to study at Imperial would be that awful, but I can't see how that would ever be the end of it. From what I can gather, IC is likely to be £2-3 million worse off after the capital expenditure cuts in November. Lets say that 1500 students start each year (I'm making up numbers as I go along, because it's getting rather late on Thursday). If you charge them £300 each, you get £450,000, which doesn't exactly make up the deficit. Each Imperial undergraduate would have to pay

twice that much every year they were here, if last year's budget cuts alone are to be compensated for. That's even before we've considered the financial repercussions on continued grant freezes, and the fact that the government is making a sizeable loss out of the still unprivatised student loans company.

ICU on the record

This month, ICU is on a publicity drive to try and gauge student response to the services and facilities it offers, the idea being that you write to *Felix* and make comments about what's on offer. In a couple of weeks, the line managers will take over the letters page and explain themselves. ICU gets given a fair bit of money just to be there and keep us happy, so if it isn't then we should probably be asking why.

Personally, I would like to ask someone why the sound system and the TV in Da Vinci's are always on at the same time, giving the slightly disconcerting effect of watching Sky Sports presenters mouth the words to Meatloaf.

EDITORIAL TEAM:

NEWS: ALEX FEAKES FEATURES: MARK BAKER

MUSIC: VIK BANSAL CINEMA: WEI LEE

ARTS: JEREMY

PHOTOGRAPHY: DIANA HARRISON AND WILLIAM LORENZ

THEATRE: KATHERINE FISHWICK PUZZLES: CATFISH

BOOKS: WILLIAM LORENZ

SCIENCE: BEN WILKINS

COLLATING LAST WEEK: TIM, MARK AND ALEX

DELIVERIES: MARK

FELIX SPORT

Hellenic-Cypriot final for basketballers

CYPRUS 42-40 ITALY-SPAIN

The Cypriot team will do battle out against the Greeks in the OSC basketball final after just managing to beat the Italian-Spanish team in the semi-finals.

The quarter finals were a breeze for both teams. The Cypriots played China and didn't even sweat. The joint Italian-Spanish team had a slightly harder game, facing a brave challenge

from Taiwan, but were able to win confidently.

The semi-final was a truly close game. The standard of play was much higher than any of the other games with all players having a good level of experience. It was a very fast game, with, on average, a point being scored every 14 seconds.

The joint Italian-Spanish team was up by two points at

halftime. At the beginning of the second half the Cypriots started to steal the show, and were six points ahead two minutes before the end of the game.

By the time the Italians and Spanish had caught up to threaten the Cypriots, the final whistle was blown. The game was very short (10 minutes each half) and as with many basketball games, the outcome was decided in the closing moments of the competition.

Individual mentions must go to Guillermo (Spain) and Dimetrios (Cyprus) for their outside shooting as well as the two opposing forwards, Alex (Italy) and Stellios (Cyprus), both Imperial basketball team mates, who challenged each other and gave an exciting display throughout the game.

Greece beat Pakistan in the other semi-final. Pakistan will now face the joint Italian-Spanish team in the fight for third place.



European Union: hot, sweaty and still friends: the Italian-Spanish team 'thoroughly enjoyed' being pipped at the post by the Cypriots.

Hockey 3rd s lose to 2nd s 'scum'

IC III 1-4 IC II

Prematch tensions were high as the KEN ARMY discovered to their horror that team mascot KEN, was battered and bruised at the hands of the seconds scum.

The first half was a riot of activity, with no team dominating play, but with KEN ARMY's spirit's high and the seconds scum low, the score remained 0-0.

Second half: what can I say? It was a travesty of justice. KEN, the mighty mascot, was not too happy. Seconds scum fluked two unjust goals before they scored a cracker of a goal by PLASTIC MAN.

KEN tried his hardest to lift the team to a higher plane, but by the time the seconds scum scored their fourth, KEN was fuming.

Thus, with KEN enraged, CURTAINS slammed home a late goal. We lost, though a moral citory was won. KEN was happy.

Results

FOOTBALL

IC I 0 - 1 LSE

RSM I 4 - 2 LSE

RSM II 2 - 2 ST MARY'S II

RUGBY

RSM 39 - 10 LSE

HOCKEY

IC II 4 - 1 IC III

BASKETBALL

OSC SEMI FINALS:

CYPRUS 42 - 40 ITALY-SPAIN

GREECE 56 - 24 PAKISTAN

RSM footballers gloomy despite successes

LSE 2-1 RSM I

Not the best day for either team: they scored from a 'penalty'. Man of the match Dave scored the equaliser. Karsten's amazing strike made it 2-1 to us. Keith made it 3-1 from 30 yards. They scored a header from a header to make it 3-2. In the second half Si scored to make it 4-2. The referee made it interesting. Some good keeping helped us.

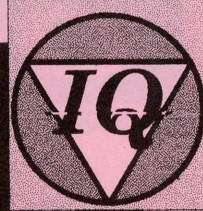
RSM II 2-2 ST MARY'S

The seconds' game was just as bad. They required two goals from Mark and an excellent save from Paul to keep them second in the league. More desire is required from both sides if we are to continue to improve.

RSM Rugby won 39-10 against LSE and ICAFC 1st lost 1-0 to LSE, so it's not all doom and gloom.

IC Athletics Clubs
Committee is
sponsored by





Out Here

Matthew Parris: The Visit, The Article, The Truth

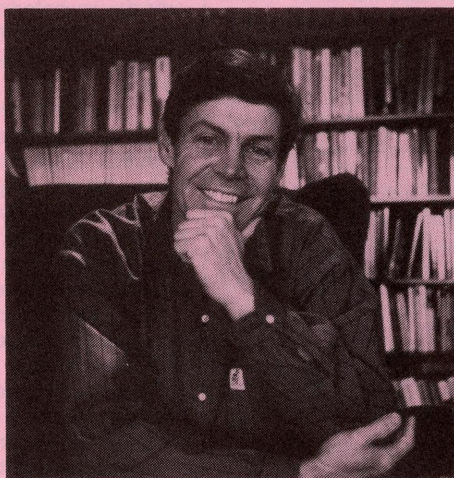
A recent train of events which started with a visit to a student society, was followed by an article in *The Times* and finally lead to an open letter in *The Reporter*, the staff newspaper of Imperial College. What was this about? It concerned the question of whether scientists are open-minded or conformist.

Matthew Parris came to Imperial on November 21 as a guest of Imperial Queers - the lesbian, gay and bisexual society here at Imperial. Parris had been an MP in the early eighties, and then moved into writing and broadcasting. He had come to tell IQ how it was being a gay man in the Conservative Party, and he went to tell of how he "came out" as gay during a speech to the House.

He asked people at the meeting if a college consisting only of scientists could be more prejudiced than one with arts students, and he the question was answered in no uncertain terms. Yes - came the reply, some students were particularly narrow minded. Parris was surprised at this and went on to wonder why this was. The meeting concluded that the modern study of science, forces a narrow outlook, where it is forbidden to question the fundamentals of the field.

Parris wondered about these questions some more and wrote them down, with his answers in his column in *The Times*. Under the headline "Learning science ought to foster openness, but instead it seems to result in narrow mindedness". He wrote "The role of science in mankind's struggle throughout history against myth and prejudice is disgraceful." and went on to describe the absence of "sceptical scientific heads above the parapet".

The first issue of *The Reporter* in 1996 carried an open letter from Professor Mino Green



Matthew Parris

complaining that Parris' choice of narrow minded scientific examples did not prove his argument. Green considered Thomas Huxley with Darwin and MIT with McCarthy as examples of open scientific minds. He concluded "Articles like yours are totally unhelpful, even damaging, and I would ask you to rethink and then rewrite what you have said."

Commenting on the letter Parris replied "In the words of Pilate, I have said what I have said." He went on to comment that the Professor's last paragraph was a good example of the attitudes to which he referred in *The Times*.

Martin Morris, who was at the original meeting with Matthew Parris remarked "He came along with an open mind but his comments were met by closed ones. Perhaps us scientists should consider his words more carefully?"

Awareness of Issues "At All Time High"

Imperial College Union President Sarah White said last Monday that she was delighted to see gay issues being put on the agenda at Imperial.

"It is obvious that prejudice is slowly disappearing - which is great news, and for that reason it is becoming easier to be open about oneself here at IC"

Members of IQ - Imperial Queers - agreed with Sarah. Alvin Renton said "Coming out can be a difficult process which involves looking at yourself very closely. Now that there are more open gay men and lesbians on television, people

coming out can see that they are not alone and that they have nothing to be ashamed of. This improves chances of meeting other gay people at places like Imperial.

Commenting, Ashley Lumsden, President of IQ said "The changing atmosphere on campus is only due to the behaviour of the staff and students here.

"We should be proud of the efforts being made that are transforming life, for all people. Out Here is part of the process making this change."

Comment - centre pages

Think Pink

Why is *Out Here* on pink coloured paper? This is a question that is easily answered. Pink is a colour that has been associated with gay men since the war. It was Nazi Germany that needed to label people physically and as they chose the green star for Jewish people, so they choose the inverted pink triangle for homosexuals.

This choice might seem rather negative, but in fact, for many gay men and women it is a measure of pride to be able to say "This is what I am" and by using pink triangles they are saying that being gay is no reason for shame or oppression.

When people here at Imperial wanted to name their lesbian, gay and bisexual society, they chose the name Imperial Queers for similar reasons. Whilst some see "queer" as an insult, it is a sign of strength to be able to say "Yes - this is what we are."

Labelling People?

Do you recognise gay people here at Imperial? Fashion-conscious, quiche-eating men? Body-building, car-mending women? These are obvious signs that some people use to recognise gay men and women.

Out Here gives you a chance to develop your own understanding of what it is like to be gay at Imperial. Our centre pages will put you in the picture about gay men and women. We all know gay people around us even if we don't realise it - yet!

Fighting Prejudice: Consoc meets IQ

In a joint meeting earlier this week, IQ and Imperial College's Conservative Society, Consoc, debated the subject of homophobia.

The event, part of the *Social Clubs' Week*, was the idea of Consoc's Deputy Chair Geoff Boon who commented "We believe the nineties will consign homophobia to the prejudicial dustbin. I hope these discussions between Consoc and IQ will promote tolerance amongst members and other students at IC." IQ's President Ashley Lumsden spoke at the meeting saying that people must work to end prejudice.

"Prejudice affects many people in complicated ways, but only by talking about our fears can we confront it. We must confront those who are homophobic in their views with intelligence and information."

Out Here

Imperial Queers, Imperial College Union, Prince Consort Road, London SW7

Editorial

Ashley Lumsden, President IQ - Imperial Queers

When people ask me why we need a gaysoc at Imperial, I wonder why they shouldn't be asking when won't Imperial need one. We all need to feel part of a community. Whether that be the academic community of a department's common room, or some of the societies that have been promoting themselves this SCC Week, it is this feeling of needing to belong that is so important. Lesbians, gay men and bisexual people are no exception to this. The important question to consider is why this minority do not feel that they belong and why it needs a separate society.

Right now, Imperial is changing its outlook. There are to be

more students and an even wider range of studies in the one place. It is also becoming more relaxed with itself. Having seen these changes over the past few years, I feel sure that this line of change is going set continue - provided that the people here continue to think! It is only by question those attitudes that have given IC a poor reputation in the minds of gay people that progress can be made.

Out Here has been written with that in mind. It is designed to look at some issues in a different way - from the inside so to speak. I hope you will take this opportunity to read them and to question them. Then we will have a new improved Imperial.

Stephen Fry

Britain's most famous celibate? A successful actor, comedian, playwright and novelist keeping up the Oxbridge appearance. SF was spotted last year wandering lost in the streets of Brugge after going AWOL from London's West End.

Why IC Needs IQ

Why does Imperial College need a society especially for gay people? What really happens at the meetings. Paul Ragan writes from a personal point of view about what IQ has meant to him.

It takes a lot of courage to accept your sexuality in the face of relentless homophobia, and it took me many years until I realised for sure that I was gay.

In many respects I am lucky, because I have been 'out' to my family and some friends for about a year. Coming to London was, at first, difficult, since I had to leave friends behind, but things can improve quickly, the more people you meet.

Most of my new friends here are not gay (as far as I know), but they don't know that I am gay. In fact, I have yet to tell any straight friends; I have decided that, if they ask me, I'll tell them. If they don't, I won't. The important thing is not to deny your feelings or hide away your sexuality, which is a totally natural part of anyone's personality, whether homosexual or heterosexual.

My first impressions of Imperial were quite positive: the huge diversity of students of different cultures and languages for example, the different clubs and societies with something to offer everyone and the student facilities in the Union. Socially, Imperial is fairly well balanced and there is lots going on all the time. The only major problem is the ratio of male:female. As a gay student, though, you can feel quite

isolated in any environment, when you don't know how to meet other gay students. It's great to be able to go along to a group and feel free to say what you like, have a laugh and

talk about things you normally wouldn't ever get the chance to say. It's an opportunity to make friends, and generally enjoy yourself. That's basically what groups like IQ are there for. Even if

you're unsure of your sexual orientation, it's still a chance to talk, instead of bottling up those feelings inside!

Personally, I've been going to IQ for about 3 or 4 months. People

are very friendly (well, I am anyway!) and there is normally some event or other each week (check out the web pages, the listings in the back of Felix and posters). Sometimes it's just a 'social', to chat with friends and make new ones. Otherwise, there might be a visit by an out-gay MP (like Chris Smith, or ex-MP Matthew Parris), or someone from a gay organisation or pressure group (like Stonewall). I've met a few good friends there, and we often go to gay cafes (like First Out) and I sometimes also go to other groups in London - there are coming out groups (like Turning Point), and other social groups like the ULU

**A visit by
an out gay
MP like
Chris Smith**

**Fed up with
going to the bar
with straight
friends?**

GaySoc. The main thing is that you can feel more at ease with your sexuality in London than practically anywhere else. Coming out to friends is the next step, but that's less important than feeling comfortable yourself with your own sexuality. So, if you're like me and fed up with going to the union bar with 'straight' friends or just want to be among people you identify with,

then come to IQ. Yes, I was nervous at first - everyone is, but that passes quickly. There are problems being gay here, which applies to society generally - there's bigotry and prejudice, which can make you depressed and angry. That's why you need to feel confident about your sexuality and be able to cope with the cruelty and stupidity of lots of people. Whether you're gay, lesbian, bi or unsure, I think it's an important first step to find out more about how life could be, to realise that there are others like you and to be what you want to be, not what other people expect you to be.

**Alan
Turing**

Famous for his work on the Enigma Code during the second world war, Turing is seen as one of the most important founders of modern computing methods. He was imprisoned in the early 50s and suffered electro therapy for being gay. Had this happened 10 years earlier who knows what would have resulted.

Has TV Changed The Image of Lesbians?

What is your typical image of a lesbian? OK we're stepping onto the unwanted territory of stereotypes and non-PC characterisations, but nevertheless, there must be one.

Recently, there have been a lot of examples of so called 'lipstick lesbians' on TV and press. All the major soaps have had them and the tabloid press has had a field day, especially with the 'lesbian chic' phrase that occurred around last year.

I decided to find out what the image of a typical lesbian was at IC and whether the media had influenced opinions on it. Furthermore, had the view of the media of lesbians as either a) ultra-feminine, made-up, skirt wearing things or b) ultra-but, shaved headed things infiltrated the opinion of the people I spoke to?

The response varied from 'well they've got shaved heads and behave like men and are ugly - sorry Karen' to an attitude that lesbians were just ordinary people with 50% slightly feminine and 50%

slightly not. Interestingly, both these views were obtained from TV, the first person though, never watched soaps and the like.

I also got told things like, 'there isn't a stereotype, it depends on those that you know are gay, erm, and if there is a stereotype, no the media doesn't affect it much or perhaps it does.'

The publication of *Out Here* has allowed me, for the first time really to find out whether other people started off with, or still have, these preconceived ideas with which the media feed us. Sure enough, such ideas have surfaced. Attitudes have varied from the stereotypical to the diplomatic, but on the whole it seemed that the whole thing about image is really an appearance thing, most people I asked plumped for the butch type image because, as one person pointed out, it is easier to spot than femininity.

I suppose therefore that the media has not succeeded in changing people's underlying feelings about lesbians in society by its insistence on the lipstick-lesbian soap stars. Does it matter how many Beth Jordache's you have when - let's face it - she was used as a non-threatening character attractive to both sexes? Normality will perhaps be recognised for all elements of society, but not for a while yet. For the moment if you are a developing lesbian take your pick: would you rather be a Madonna or a k. d. lang?

Sandi Toksvig

Much loved in her role in "No.73", ST has gone from strength to strength with a successful writing and stage career. Her talents of improvisation have shone through "Whose Line is it Anyway", "Just a Minute" and appearances at The Comedy Store.

AN OPEN LETTER TO A FRIEND

I always used to be slightly innocent on some matters, homophobia being one of them. I was aware that it existed and I was aware that people had been very badly hurt by it, but never had I been exposed to it. I think part of the problem was that I had been in the closet about my sexuality throughout school and at university until a few months ago. Also, my friends, when I did decide to plunge into the deep unknown and come out, were very supportive, it didn't bother them at all and neither did it bother my family. I considered myself very fortunate but I felt I needed the experience of coming across a homophobe.

That is why I have to thank you, you made me realise what people can be like. It is for that reason that I have decided to write this open letter to "Felix" as I want to discuss further some of the points you raised. Of course there's always the possibility you were winding me up, but I think not. I think the first statement I will have to quote because otherwise I feel that I can't give it the passion and eloquence that it deserves, you said "lesbians are OK as long as I don't know any of them but gay men should be shot." Ah what a wonderful statement that is, yes after being a lesbian all my life and you having known me for part of that life, I am really going to change just like that because I told you that I was gay.

As for your second statement that gay men should be shot, I am surprised that one so dedicated to the "true nature" as yourself would need to rely on a gun of all things, I agree, what could be more natural?! You did however raise another very valid point, I am afraid I would do it justice if I didn't quote again, "Homosexuality is unnatural... I only like the 'true nature'." What may I ask is the true nature? Another of my friends interjected at this point saying that if we were only concerned with 'true nature' then only trees and things that didn't destroy themselves would be here, well, I mean, how ignorant can you get? Much better to merely criticise something that happens in many aspects of animal life, not just human and to call it unnatural. After all it was a choice we made wasn't it!

I once again thank you for trying to guide me to the "right" path of heterosexuality, I do however find it unfortunate that you will probably not read this as it would frighten you too much even to be caught looking at part of this "homosexual pull-out section".

Perhaps I'll see you around, or will you avoid me because you now view me as a shaved headed, dyke T-shirt wearing, lesbian with attitude? Meanwhile, I will continue viewing myself as I am and you as a prat.

HIV: Facts From Fiction

Nigel Russell is involved in KY Babies - Camden and Islington Health Authority's Peer Education Project. **Out Here** asked him to answer some common questions about HIV and AIDS

What is HIV? Human Immunodeficiency Virus (HIV) acts on the body's own defensive or immune cells. Following infection with the virus there is a variable period during which the body tries to control it. Many HIV positive people remain healthy for long periods, some experience a variety of unpleasant symptoms but become well again. In most cases, however, the virus eventually damages the immune system seriously and leaves people living with HIV vulnerable to specific, sometimes life threatening, infections. This is commonly known as an AIDS diagnosis (Acquired Immune Deficiency Syndrome).

What is a Virus? A microbe

which is an enemy organism which must infect a body cell to multiply. HIV is a human virus which is weak and cannot survive long outside the body fluids in which it is found. HIV can only be transmitted from person to person under specific conditions.

HIV does not discriminate

AIDS, of course, cannot be transmitted, it is a diagnosed illness and not a virus.

Which body fluids contain HIV? HIV is found in semen, blood and vaginal secretions in sufficient quantity and quality to risk infection. It cannot be transmitted by saliva, urine or faeces as these are harsh and hostile environments for the virus.

What is Safer Sex? Three continued over

Sir
Michael
Tippett

At the age of 90, MT is regarded as the "elder statesman of British music". A pacifist, he wrote "A Child of our Time" a year after he was imprisoned in 1943. He has several symphonies and many operas to his name.

What is Coming Out?

Out Here asked Matt Williams and Ashley Tapp what it meant for them to come out and what life has been like for them at Imperial.

Matt Williams writes

Ashley Tapp writes

I started studying at this University two years ago, ready to join some sort of Lesbian and Gay Society. To my complete dismay, there was no such society, so I started two more years of my life as a closet case. Life here was quite a nightmare, but it was not totally unbearable. I enjoyed London to the full, and I had my college work to fall back on. I had really good friends, but I couldn't share all my life with them, which made me feel very lonely and depressed.

Then, at the start of last year, IQ started up. The fact that there were other gay people here, at Imperial College, gave me a lot of confidence. At that time I was far too nervous to join up, but by the end of my second year I decided that I was going to come out as gay. I chose to start doing this by going to the first IQ meeting of my final year, last term.

Now I have been out for four months and, while not a long period of time, my life can now only be described as amazing! All my friends of previous years have been great to me. They have all totally accepted me as gay. And I have had no adverse reactions whatsoever.

I have also now got quite a few really close gay friends. Actually knowing other gay people is a great relief. Regardless of the impression you might get, not all gay people are camp, most are very normal and really lovely.

I also found several "coming out" groups very useful: they gave me an opportunity to discuss my fears and worries. I went to New Beginnings and Turning Point (see Directory for details) and found them both very helpful.

Some of my friends have said to me that Imperial College must be a hard place to be gay, but it hasn't been at all! If you are worried about coming out, all I can say is "go for it!" You've got nothing to lose, you will get to know yourself a hell of a lot better! IQ is a great place to start the ball rolling.

My life can now only be described as amazing

When I talk to people about my sexuality everybody always asks me "When did you first realise?" or "How did you know?" I've always known really but I only realised what it meant when I grew up at about twelve or thirteen. I knew it was something I couldn't talk to anybody about and from jokes I had heard and what people said about "gays" or "queers" that it was something I was supposed to keep to myself. It is difficult to describe the isolation I felt during those years as I tried my best to be straight, getting a girlfriend and doing macho sports. I knew that I wasn't being true to myself.

University gave me the opportunity to change: to put the past behind and rediscover myself. My first move was to go to a coming out group which I saw advertised in the Time Out Student Guide. I'm so glad I went. I met some good friends who were going through exactly the same thing as me.

It makes a lot more sense to be open

It is one thing to come out to yourself and another to come out to friends and family. Fear of rejection and emotional black mail all complicate the issue. Coming out may hurt some people like the family and close friends, but when you think of the damage that can be caused by hiding your sexuality and the enormous emotional burden you take upon yourself, it seems to make a lot more sense to be open.

Coming out at Imperial has its pros and cons. London is Britain's "Gay Capital" but Imperial College has a difficult atmosphere to come out in. More often than not I'm surprised by the very open and accepting way my friends have dealt with my sexuality.

IQ was formed toward the end of my first year and it has been an invaluable place at which to meet people and share thoughts.

HIV: Facts From Fiction from centre pages

factors must come into play to make HIV transmission possible from an infected to an uninfected person: Quantity, Quality and Route.

Quantity: There has to be enough HIV present in the body fluid to make infection possible. Visible amounts of blood, semen or vaginal secretions are enough.

Quality: The virus must be healthy and active to infect, it deteriorates rapidly outside the body.

Route: HIV must enter directly into the blood stream in sufficient quantity and quality for transmission to occur, i.e. from one protected environment to another. This is why sharing injecting equipment (needles, barrels etc.) is an easy way for HIV to infect people. The virus can pass from bloodstream to bloodstream without being exposed to a harsh environment. Similarly, unprotected vaginal or anal sex involves body fluids in sufficient quantity, the quality of the virus is good and it can pass straight from one warm body to another. A route of transmission is possible through small tears in the skin or membranes around the sexual organs. This applies equally to sex with men or women. HIV does not discriminate between a person's sexual orientation. At present the gay community is better educated than the straight community and statistics show the latter are more at risk than the former.

What about condoms? Condoms offer effective protection against HIV (and other sexually transmitted diseases) when you have vaginal or anal intercourse. They stop the exchange of body fluids so there is no route for infection. Extra strong condoms are essential for safer anal sex along with plenty of water based lubricant such as KY Jelly, Wet Stuff or Liquid Silk (oil based lubes like vaseline rot rubber and destroy condoms). Remember to follow the instructions and use and dispose of condoms properly so they can act as an effective barrier.

What about risks? We know the risk of HIV transmission through oral sex is very low. Remember, saliva makes the quality of the virus poor, a healthy mouth and throat acts as a barrier and stomach acids kill the virus. Some people prefer to use a condom for oral sex, flavoured ones are available. Touching, kissing and DIY are all safe as is any other kind of sex that does not involve the body fluids mentioned getting into your bloodstream.

Safer sex isn't just about putting on a condom: relationships, talking to each other about what you want and feeling good about yourself are also important.

*Whatever you do, have
fun and be careful.*

**THE PINK PAPER IS
DELIVERED TO THE
STUDENT UNION OFFICE
EVERY THURSDAY. IT
HAS NEWS, LISTINGS
AND FEATURES OF
GENERAL INTEREST,
AND IT'S FREE**

Out There...

Out Here tells you where to go out there,
from suggestions made by IQ members.

Cafes

First Out - A simple cafe. Mixed gay men and lesbians, of all ages. Serves good but expensive food. Has a downstairs bar. A good place to pick up the papers. 52 St Giles High Street WC2. Tottenham Court Rd tube

Kudos - Daytime it's large and airy. Evening it's large and packed mostly by younger men.

10 Adelaide St. WC2. Charing Cross tube.

Bars and Pubs

The Yard - stylish and in the centre of Soho. In an open courtyard setting, with a more cosy upstairs bar. 57 Rupert St. W1. Piccadilly Circus tube.

Central Station - A traditional pub catering for all tastes. Regular cabaret. Upstairs cafe is quieter and sometimes serves food. 37 Wharfedale Rd N1.

Kings Cross tube.

79CXR - Loud, popular and cheap. A bar that has more people but less attitude. 79 Charing Cross Rd W1.

Royal Vauxhall Tavern - South of the River, and right next to Vauxhall tube. This one has regular cabaret and is women only every Friday night for Vixens. 372 Kennington Lane SE11. Vauxhall tube.

Angel - Popular and mixed. Fresh orange juice and smoothies all evening! 65 Graham St. N1. Angel tube

Clubs

Fridge - Love Muscle, every Saturday night, loud and vivacious. 2 Town Hall Parade SW2. Brixton tube.

London Astoria /LA2 - GAY Mondays Thursdays and Saturdays. Younger crowd, regular PAs. 165 Charing Cross Road WC2. Tottenham Court Rd tube

Limelight - Sunday's *Tea Dance* is growing in popularity. 136 Shaftesbury Av. WC2. Leicester Sq. tube.

Directory

This list of useful contacts was compiled by Nigel Russell from the suggestions of members of IQ. These services are provided for Lesbian, Gay and Bisexual people, friends and families:

Lesbian and Gay Switchboard - This service has information on virtually all groups, societies, bars, clubs and pubs of interest to gay people, plus advice and support. Call 0171 837 7324 24 hours, every day. (A heavily used service and can be engaged.)

North London Line - project for young people under 26 open Monday - Friday. Tel: 0171 607 8346

London Friend - 86 Caledonian Road, N1. Offers counselling, helplines and social support groups. Tel: 0171 833 1674. On Wednesday evenings, **Turning Point** - a discussion group about coming

out - meets here. Phone the helpline for more details.

Axis Clinic - confidential and free sexual health clinic for under 26's. Open Thursday evening, Mortimer Market Centre WC1. Tel: 0171 380 9650

Positive Youth - self-help group for young people living with HIV/AIDS. 51B Philbeach Gardens SW5. Meets Friday evenings. Tel: 0171 373 7547

The Terrence Higgins Trust - for information, advice and help on AIDS and HIV infection. 52-54 Grays Inn Road WC1. Administration: 0171 831 0330. Helpline: 0171 242 1010. Legal line 0171 405 2381.

New Beginnings - A discussion group that helps people who are coming to terms with their feelings. Meets Saturdays at 7.30 in Central Station (above). Call 0181 981 3621 for information and a chat.

What's happening at Imperial Queers

This term marks one year of IQ. In that year IQ has had visits and speakers of all kinds. In June it was a visit to see Chris Smith, the first out gay MP, at the House of Commons. In November it was Matthew Parris. In December it was off to see *Burning Blue* at the Ambassador's. There will be more events like these in the coming months, and IQ is meeting all through this term and into the Summer term.

IQ meets on Tuesdays at 7.30 in the Brown Committee Room on the top floor of the Union

Building. You can keep in touch with IQ's events by looking for the posters on the walkway and by looking at the web site on

<http://pink.doc.ic.ac.uk/IQ/>
and you can contact IQ by internal mail addressed to IQ, IC Union or by mailing to pink-help@doc.ic.ac.uk

Out Here was produced by Imperial Queers for SCC Week. Special thanks to Sarah White, Barry Platt and Martin.