

# pacific citizen

National Publication of the Japanese American Citizens League

Newsstand: 25¢  
(60¢ Postpaid)

Whole No. 2,397/Vol. 103 No. 2/ISSN: 0030-8579

941 East 3rd St. #200, Los Angeles, CA 90013

(213) 626-6936

Friday, July 11, 1986

## Chicago convention honorees named

### Uno Civil Rights Award

Walt and Mildred Woodward, former publishers of the Bainbridge Review, will be presented with the Edison Uno Civil Rights Award during the JACL National Convention for their support of Japanese Americans' civil rights during WW2.

The Japanese Americans on Bainbridge Island were the first residents of Washington state to be evicted from their homes and incarcerated in March 1942. The Woodwards immediately condemned the government's ac-

tions and continued throughout the war to speak out against the loss of citizens' rights.

Public denunciation and the loss of advertising and subscription revenue did not deter the Woodwards from their crusade.

In nominating the Woodwards for the award, Golden Gate JACL stated, "Their action was not a one-time pronouncement... it was a sustained effort over a period of many years. Their action was not for their own survival; on the contrary, it was dangerous to their survival. This unusual

Continued on page 2

### JA of the Biennium

The National JACL has announced plans to pay tribute to Lt. Col. Ellison Onizuka, the first Japanese American in space and one of seven astronauts killed when the shuttle Challenger exploded on Jan. 28.

Lorna Onizuka, wife of the late astronaut, will attend the JACL National Convention's July 25 Sayonara Banquet, hosted by the Chicago JACL, to accept a posthumous Japanese American of the Biennium Award on her husband's behalf.

### JACLer of the Biennium

Florin Chapter member Mary Tsukamoto will be honored as JACLer of the Biennium for her tireless efforts in support of JACL, the LEC redress campaign, and the community.

The award will be presented during the National Convention at the July 21 Kick-off Dinner.

Although she retired as an elementary school teacher in 1976, Tsukamoto continued to educate young children through Jan Ken Po Gakko, a multi-cultural program in Sacramento.

Associating with the Yonsei prompted her to develop educational materials and photo exhibits on the WW2 internment for the community and public schools. In her continuing effort to educate the public, she has served as a primary organizer of the Day of Remembrance events held every Feb. 19 in Sacramento.

Tsukamoto has become a valuable resource to the Smithsonian Institution, which is planning an exhibit on Japanese Americans for September 1987, with her extensive collection of historical documents and photos of the JA

community in Florin and artifacts from the camps.

Because of her willingness to share her personal wartime experiences, she has been featured in USA Today, the Washington Post, the April 1986 National Geographic article on JAs, and John Tateishi's book *And Justice for All*. She also testified at the Apr. 28 House hearing on redress.

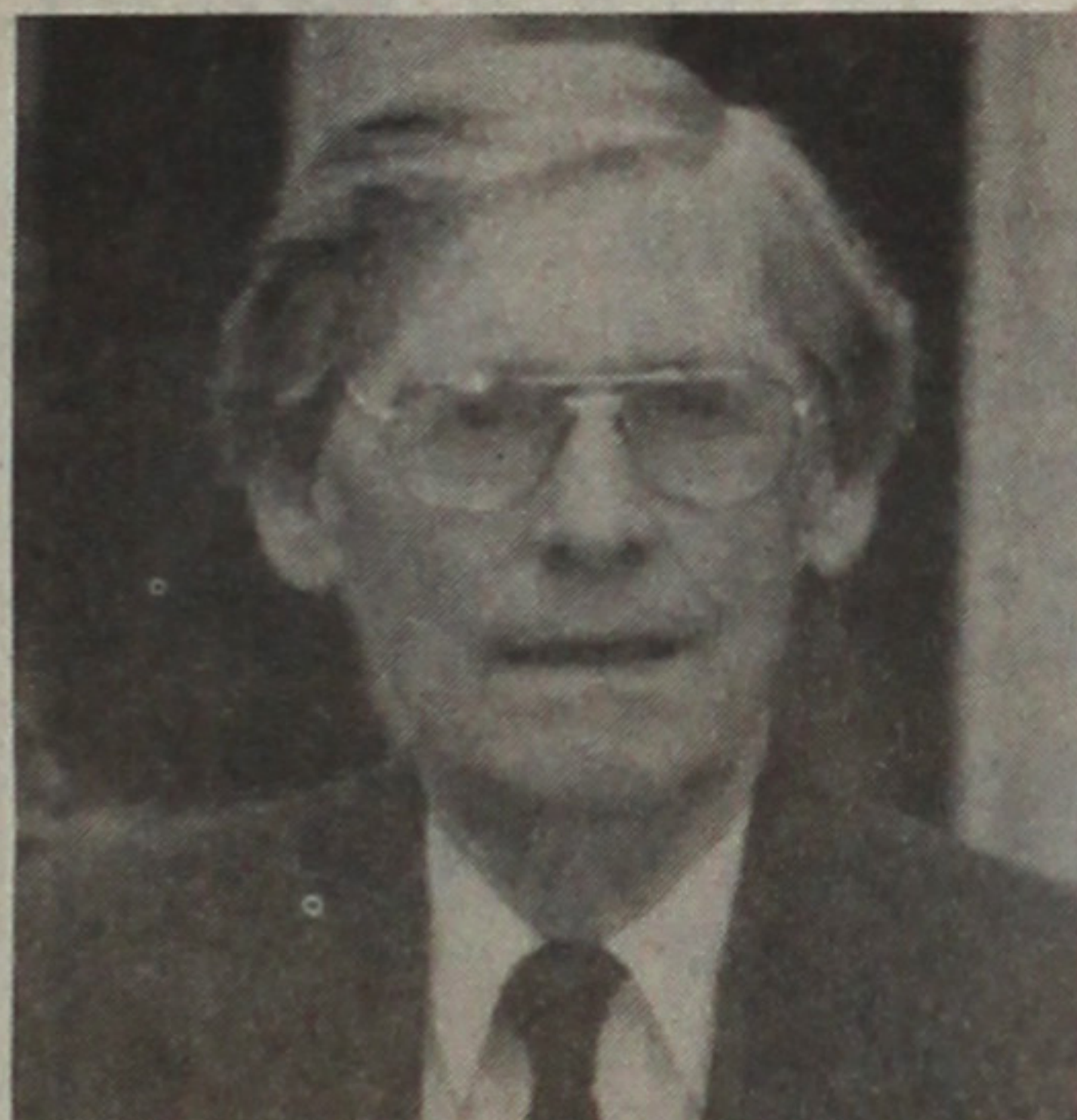
She is an active member of Florin United Methodist Church and Florin Historical Society. In 1985 she received the Sacramento County Human Rights Commission Community Service award.

### Masaoka DPS Award

Philip H. Trezise has been named this year's recipient of the Mike M. Masaoka Distinguished Public Service Award, to be presented July 23 during the JACL National Convention.

The award honors a non-Japanese American individual or organization that has rendered outstanding and significant public service in promoting understanding and mutually cooperative relations between the U.S. and Japan, and/or in encouraging the civil and human rights of all Americans, especially those of Japanese ancestry.

Trezise, senior fellow at the Brookings Institution since 1971, served as minister of economic affairs at the American Embassy in Tokyo from 1957 to 1961. For his accomplishments in this position, he is considered one of the major architects of Japan's development as an international



Philip H. Trezise

economic force and has been honored for helping establish goodwill and partnership between the U.S. and Japan.

His address upon acceptance of the Masaoka Award is expected to provide insights into the current trade problems facing U.S.-Japan relations, and particularly how Japanese Americans may be affected and how they might best respond.

Continued on Next Page

### Special Recognition

Howard S. Cady, former senior editor and vice president of the publishing firm William Morrow & Co., will be recognized during the JACL National Convention as a friend and advocate of Japanese Americans seeking to tell their story to the American public.

JACL's Japanese American Research Project Committee will thank Cady for his efforts to publish Bill Hosokawa's book *Nisei* in 1969. Cady persuaded his associates at William Morrow that *Nisei* needed to be published as a historical record of the JA experience.

The critical and financial success of the book enabled Japanese American Research Project to commission a series of additional studies and encouraged other Nikkei to write, thus increasing sources of public knowledge and research material about

## H.R. 442 garners new supporter

WASHINGTON—Redress bill H.R. 442 has gained another co-sponsor, Rep. Dean Gallo (D-N.J.), it was announced July 7 by JACL-LEC executive director Grayce Uyehara.

Gallo's commitment was made to Eastern District JACL regional redress coordinator Tom Kometani and Rev. Kenneth Austenberg of Flanders, N.J., during a July 2 meeting.

Gallo is a member of the Public Works & Transportation Committee with subcommittee assignment on Water Resources and Economic Development. He

is also on the Small Business Committee with subcommittee appointments on Small Business Administration & Small Business Investment Companies Authority and Minority Enterprises & General Small Business Problems.

The bill now has 135 co-sponsors, with 130 floor votes in the House. The count includes the prime sponsor, Majority Leader Jim Wright of Texas.

Austenberg is a constituent of Gallo. Both Kometani and Austenberg are members of the Northern New Jersey Methodist Conference.

## Majority Leader Wright, redress bill sponsor, to deliver keynote speech

CHICAGO — House Majority Leader Jim Wright (D-Texas) will be the keynote speaker at the JACL National Convention's Sayonara Banquet on July 25.

Wright was instrumental in passage of legislation which established the Commission on Wartime Relocation and Internment of Civilians in 1980. Following the release of the commis-

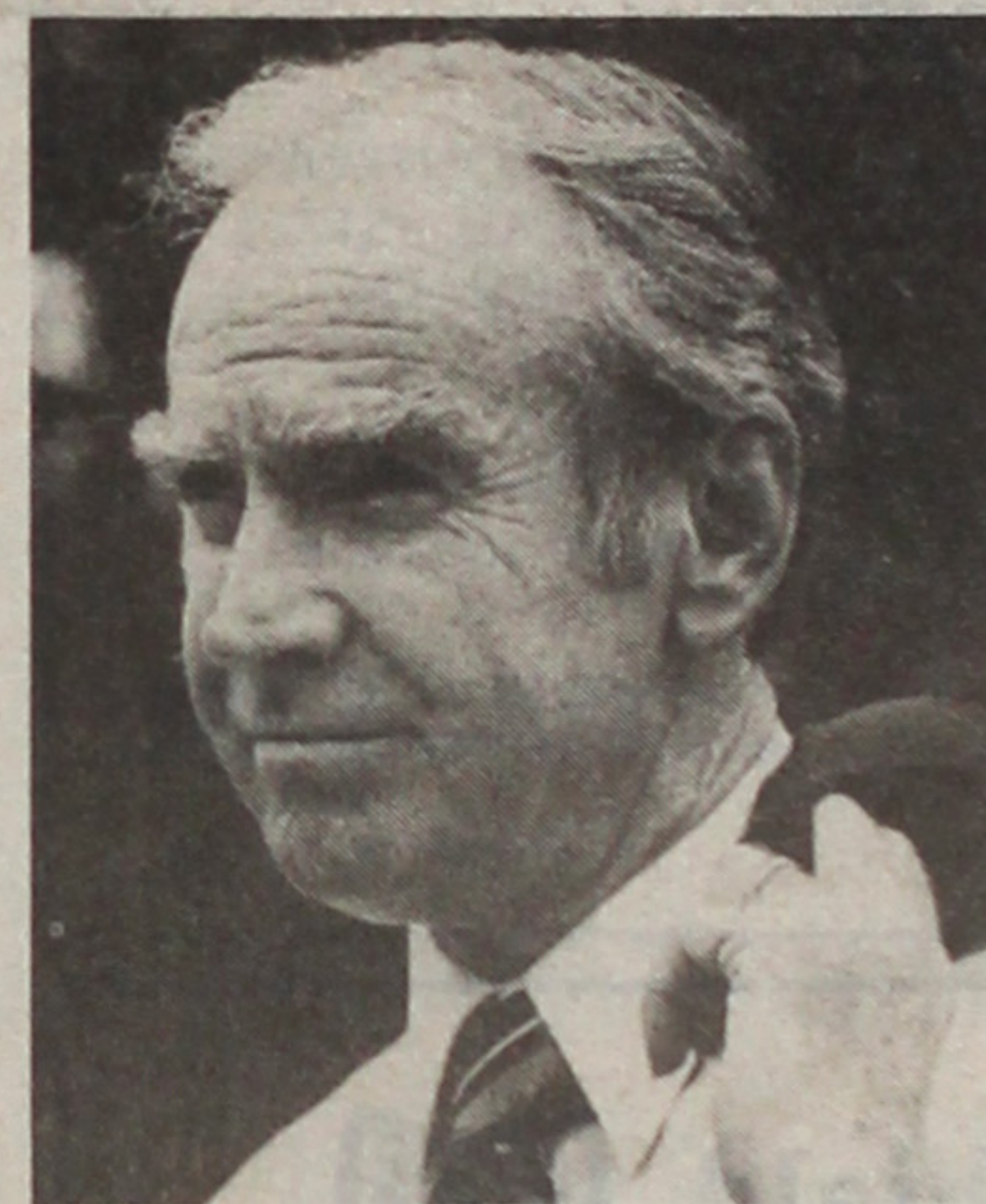
sion's findings and recommendations, he introduced a redress bill, H.R. 4110, in 1983. The bill was reintroduced by Wright in 1985 as H.R. 442, in honor of the Nisei of the 442nd Regimental Combat Team.

"Many of my very good friends in Texas who served in the 36th Division owe their lives to the heroism of the soldiers of the 442nd," stated Wright in testimony in support of H.R. 4110.

"While Americans of Japanese ancestry fought and died on the field of battle, their civilian counterparts were being rounded up like cattle. The internment of civilians during WW2, on no grounds other than racial heritage, was a grotesque aberration, totally unrepresentative of all that is good and compassionate and just in our history and our legal system..."

"The bill I have introduced disdains meanness and revenge; it makes some sacrifices for a worthy end... We can never repay those proud and loyal Americans for having questioned their patriotism during that dark time... but this bill will allow us an opportunity to right a grievous wrong."

In a U.S. News & World Report survey, Wright was chosen by his colleagues as the most respected member of the House and the most persuasive debater. A fifth-term majority leader, he is expected to become Speaker of the House following the retirement of Tip O'Neill (D-Mass.).



Rep. Jim Wright

this minority group.

Cady retired from William Morrow earlier this year after serving as senior editor and vice president since 1968. He continues to serve as a consultant to the company and lectures on editing and publishing at Columbia University.

The recognition will be given July 23 as part of the Mike Masaoka Distinguished Public Service Award Dinner at the Hyatt Regency.

## 2 vie for National JACL presidency

Two candidates have filed for the office of National JACL President: LEC Fund Drive Chair Harry Kajihara of Ventura County Chapter (endorsed by the Pacific Southwest District) and Vice President for Membership Rose Ochi of East Los Angeles Chapter.

The Nominations Committee posed interview questions for the presidential candidates. Their answers are presented in this issue.

• **Harry Kajihara** was born in Oyster Bay, Wash., spent the war years in Tule Lake, then lived in Richmond, Calif. until 1950. He received a B.S. in electrical engineering from UC Berkeley in 1950, an M.S. in the same subject from USC in 1967, and an M.B.A. from Calif. Lutheran Univ. in Thousand Oaks.

He has held numerous engineering jobs in New Jersey and California, including positions as: director of Electrical Systems Division, Naval Civil Engineering Laboratory; program manager of Civil Engineer Support Office, Naval Construction Battalion Center; and director of En-

Continued on Page 3

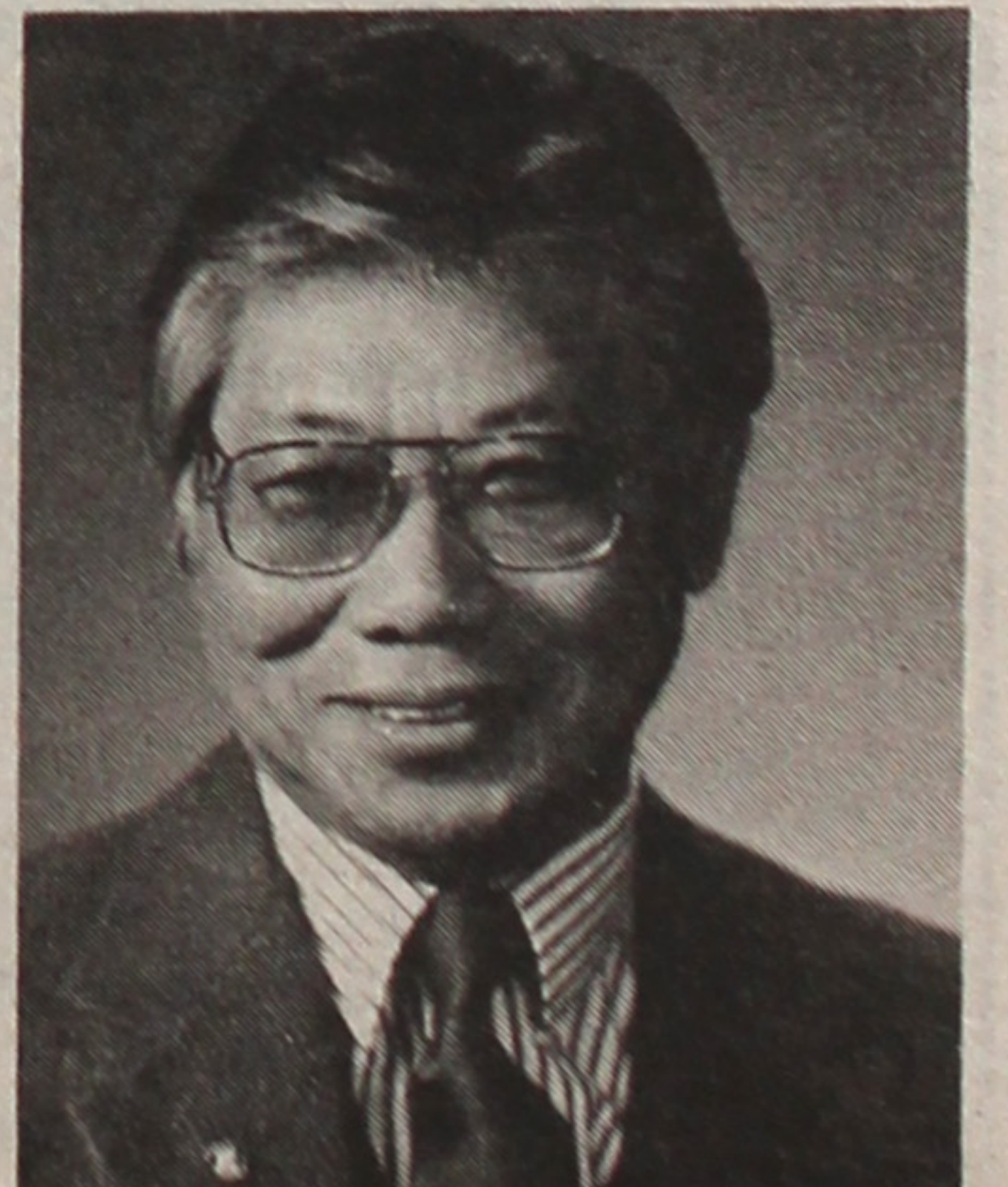


Rose Ochi  
VP for Membership

• **Rose Ochi** was born in Los Angeles in 1939. During WW2 she was interned in the Santa Anita assembly center and the Rohwer, Ark. camp. She received a B.S. from UCLA in 1959 and an M.A. from Cal State Los Angeles in 1967. She taught in the Montebello Unified School District from 1961-65 and in the L.A. Unified School District from 1966-68.

In 1972, Ochi received her Juris Doctor from Loyola Univ. and became a member of the California Bar. She served as staff attorney at USC's Western Center on Law & Poverty from 1972-74. She has been executive assistant to Los Angeles Mayor Tom Bradley

Continued on Page 3



Harry Kajihara  
LEC Fund Drive Chair



## Community Affairs

OAKLAND, Calif.—**Not My Fault**, Asian American Theatre Company's comedy group, celebrates its first anniversary of performances at Ohana Cultural Center, 4345 Telegraph Ave. (corner of 44th St.), with a benefit July 12, 8:30 p.m. Performers: Emilya Cachapero, Keith Choy, Anna Duhay, William Ellis Hammond, Alex Herschlag, Fay Kawabata, Ron Murieta and Judi Nihei. Admission: \$4. Info: (415) 658-1868.

DANA POINT, Calif.—**Orange County Sansei Singles** plan a weekend retreat at Lake Arrowhead for the weekend of July 19-20, including scenic walks, boating excursions, fishing, browsing at local shops, hay ride, barbecue and small group discussions. Space limited to first 35 who sign up. Info: Grace Masuda, (714) 496-7779.

VANCOUVER, Wash.—**"Nihonga,"** A priceless collection of 45 paintings by contemporary Japanese artists, will be on display at George C. Marshall House, 1310 E. Evergreen Blvd., through Sept. 7. Sponsored by City of Vancouver, in conjunction with Portland Art Museum. Tickets: \$5. Info: (206) 696-8057.

LOS ANGELES—Centenary United Methodist Church holds its annual **Ari-gato Bazaar** at Maryknoll Japanese Catholic Center, 222 S. Hewitt St., July 19, 11 a.m.-7 p.m. Admission free.

WEST COVINA, Calif.—**West Covina Buddhist Church** holds its 18th Obon Festival at East San Gabriel Valley Japanese Community Center, 1203 W. Puente Ave., July 20, noon-10 p.m. Food, games, cultural exhibits, a performance by West Covina Taiko Group and ondo dancing will be featured. Info: Marvel Miyata, (818) 337-9123, or Rev. Koen Mishima, (818) 960-1166.

SAN FRANCISCO—Pacific & Asian American Women Bay Area Coalition presents **"Asian Women/Asian Men: Why No Match?"** as part of a series of programs on relationships July 19, 9:30 a.m.-noon, at JACL Community Room, 1765 Sutter St. Panelists include Ryo Imamura, director of East-West Counseling Center in Berkeley, and Russ Quon, account executive of a major marketing firm. Free and open to public. Info: Janet Tom, (415) 864-5487.

## Workshop on JA parenting slated

CHICAGO — Many third and fourth generation Nikkei, seemingly well-adjusted as youngsters, encounter cultural identity problems as they grow older.

The aim of the Nikkei Parenting Workshop at the JACL National Convention will be to sensitize parents to critical bicultural and multi-cultural values and to openly discuss these values and common experiences in the Nikkei parenting process.

Cleveland Chapter member Toaru Ishiyama, who will moderate the discussion, holds a doctorate in clinical psychology and is a fellow of the American Psychological Assn. He is also a former associate in psychology at Case Western Reserve University and has held various consultant roles with National Institute on Drug Abuse and National Institute for Mental Health, and clinical and administrative positions with the Ohio Dept. of Mental Health.

The workshop will be held July 22, 2-5 p.m.

No. 2,397  
Allow 6 weeks advance notice to report address change with label on front

## If you are moving / Wish to subscribe,

Write New Address below. Effective date \_\_\_\_\_  
Please send the Pacific Citizen for:

☐ 1-Yr \$20 ☐ 2-Yrs \$38 ☐ 3-Yrs \$56

To: \_\_\_\_\_

Address: \_\_\_\_\_

City, State, ZIP: \_\_\_\_\_

All subscriptions payable in advance. Foreign: US\$12.00 extra per year.

Checks payable to: Pacific Citizen, 941 E. 3rd St., Los Angeles, CA 90013

EXPIRATION NOTICE—If the last four digits on the top row of your label reads 0686, the 60-day grace period ends with the last issue in August, 1986. Please renew your subscription or membership. If membership has been renewed and the paper stops, notify the PC office.

## UNO AWARD

Continued from Front Page

and brave couple deserve to be recognized."

The award is named for long-time civil rights activist Edison Uno, who died in 1976 at the age of 47. He was instrumental in the repeal of Title II of the 1950 Internal Security Act, which allowed the establishment of government detention camps, and in the placement of state plaques at the Manzanar and Tule Lake camp sites. At the time of his death, he was chair of the JACL Anti-Dis-

crimination Committee and co-chair of the National JACL Committee on Reparations.

The Woodwards will receive the award during the National Convention's July 21 Kick-Off Dinner.

## MASAOKA AWARD

Continued from Front Page

As part of the Masaoka DPA dinner, greetings will be offered by Nagao Hyodo, minister of the Japanese Embassy, Hirokazu Arai, consul general of Japan in Chicago, and, on behalf of JACL, Chicago Chapter president Paul Igasaki, Midwest District governor Tom Hara, and Frank Sato, current national president.

Highlighting the program will be an address by Mike Masaoka, longtime statesman of JACL, in whose name the biennial award was established in 1970.

Master of ceremonies will be Noboru Honda; co-chairs of the event are Arthur Morimitsu and Shig Wakamatsu.

A cocktail hour at 6 p.m. will precede the dinner, which takes place at 7 p.m. in the Regency Ballroom of the Hyatt Regency.

## Hirabayashi weds

EDMONTON, Alberta—Gordon Hirabayashi, *coram nobis* plaintiff and professor emeritus at University of Alberta, married Susan Carnahan on Apr. 25.

The bride is a free-lance radio and TV writer specializing in health, peace and women's issues. A native of Toronto, she has resided in Edmonton for the past 25 years.

## Your Business Is Our Business



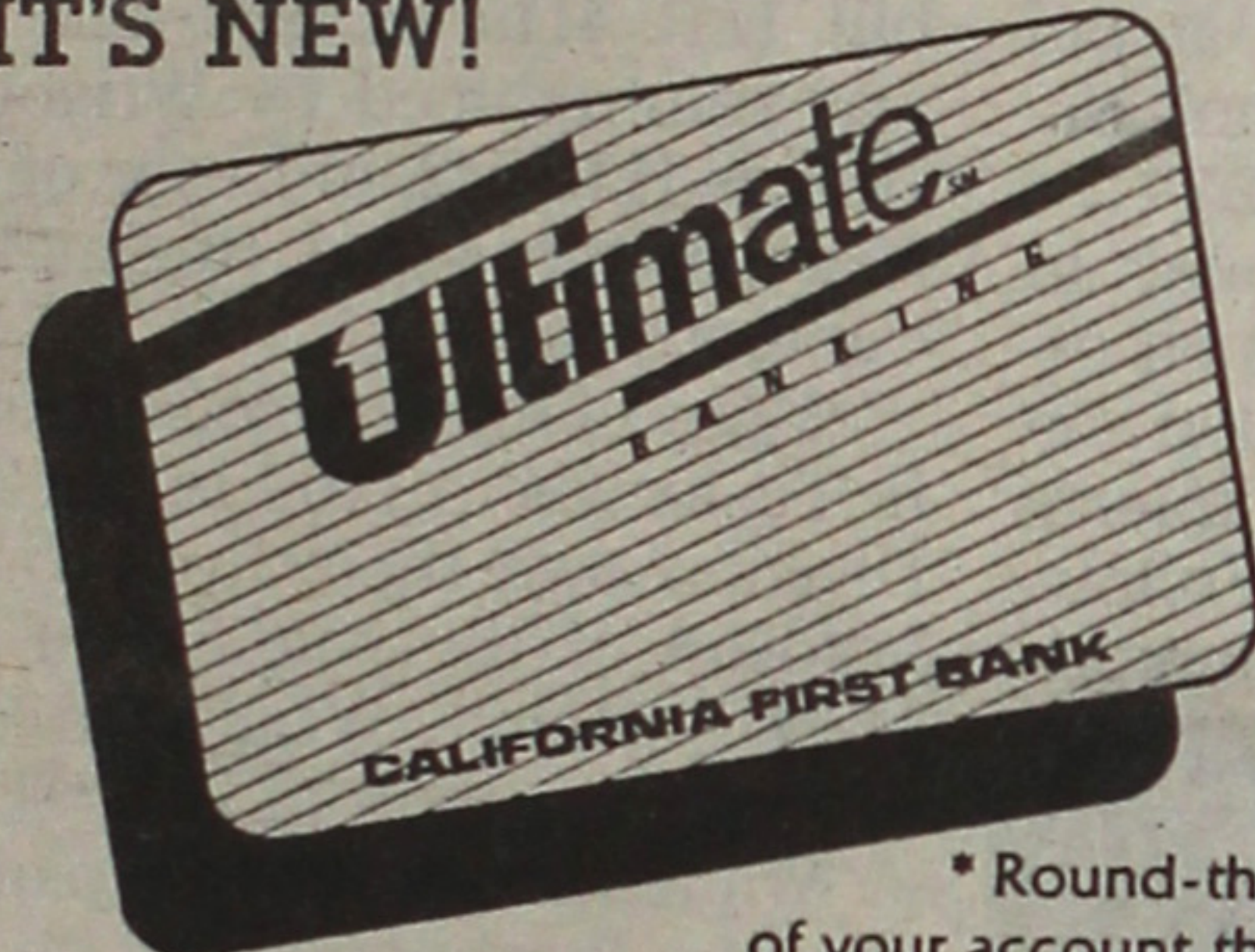
**Pacific Business Bank**

We make it our business to understand your needs.

Member FDIC

438 West Carson Street, Carson, CA 90745. 213/533-1456

## IT'S NEW!



CALIFORNIA FIRST BANK'S  
**ULTIMATE BANKING™**

A better way to do your banking.

\* Round-the-clock CONTROL

of your account through CALL 1ST.

- \* Round-the-clock ACCESS to your money through 120 Ultimate Banking™ ATMs.
- \* SIMPLE recordkeeping with check safekeeping.
- \* MORE CONVENIENT access through more than 1000 Star System teller machines through California and other states.

Stop by your nearest California First Bank office and ask details of Ultimate Banking™.

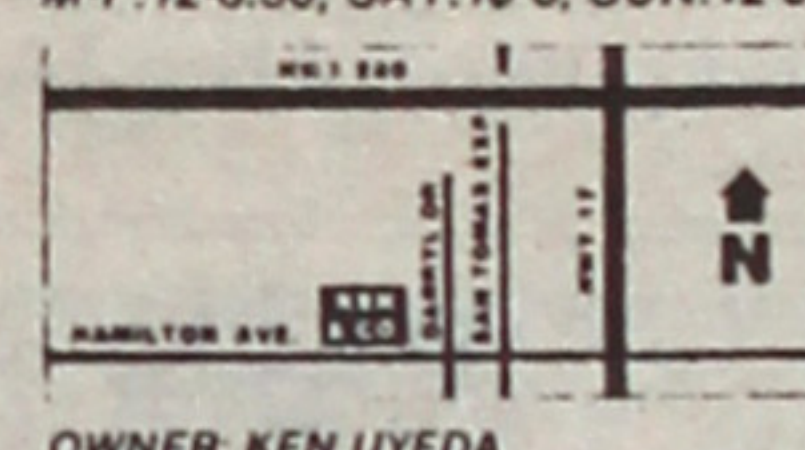
**CALIFORNIA FIRST BANK**  
Member FDIC  
© California First Bank, 1985

## SHORT & SMALL MEN'S APPAREL

WE OFFER THE PROFESSIONAL MAN  
A COMPLETE BUSINESS WARDROBE.

CARRYING OVER 500 SUITS, SPORT COATS AND OVERCOATS BY GIVENCHY, LANVIN, VALENTINO, ST. RAPHAEL & LONDON FOG IN SIZES 34-42 SHORT & EXTRA SHORT. OUR ACCESSORIES INCLUDE DRESS SHIRTS, SLACKS, AND TIES IN SHORT & SMALL SIZES / LENGTHS. IN ADDITION, WE RECENTLY EXPANDED TO INCLUDE AN ITALIAN DRESS SHOE LINE IN SIZES 5-7 1/2.

785 W. HAMILTON AVENUE  
CAMPBELL, CALIFORNIA 95008  
PHONE: 408/374-1466  
M-F: 12-8:30, SAT: 10-6, SUN: 12-5



OWNER: KEN UYEDA

## KEN & COMPANY

## New Cars



Used car loans 13% APR  
No prepayment penalty fee  
Free insurance on loans & savings  
IRA accounts available

Now over \$7 million in assets

**NATIONAL JACL CREDIT UNION**

Post Office Box 1721  
Salt Lake City, Utah 84110  
Telephone (801) 355-8040

## JOIN

**The Nat'l JACL Credit Union**

JUST FILL OUT AND MAIL

Name \_\_\_\_\_

Address \_\_\_\_\_

City/State/Zip \_\_\_\_\_

PO Box 1721 Salt Lake City, Utah 84110 Tel (801) 355-8040

## JACL-Blue Shield

Medical-Hospital-Dental  
Coverage



Available Exclusively to:

- Individual JACL Members
- JACL Employer Groups

JACL members between the ages of 18 and 64 may apply to enroll in the Blue Shield of California Group Health Plan sponsored by JACL especially for JACL members. Applicant and dependents must submit a statement of health acceptable to Blue Shield before coverage becomes effective.

For full information complete and mail the coupon below or call (415) 931-6633.

- To: Frances Morioka, Administrator  
JACL-Blue Shield of California  
Group Health Plan  
1765 Sutter Street  
San Francisco, CA 94115

Please send me information on the JACL-Blue Shield of California Group Health Plan:

- ☐ I am a member of \_\_\_\_\_ chapter.
- ☐ I am not a member of JACL. Please send me information on membership. (To obtain this coverage membership in JACL is required.)

Name \_\_\_\_\_

Address \_\_\_\_\_

City/State/Zip \_\_\_\_\_

Phone (\_\_\_\_) \_\_\_\_\_

☐ Work ☐ Home



**OCHI**  
Continued from Front Page

and the city's director of criminal justice planning since 1975.

**Service as Attorney**

In her capacity as a lawyer, she has been a presidential appointee to the National Commission on Immigration & Refugee Policy; the attorney general-appointed vice chair of the Dept. of Justice's National Minority Advisory Council; a mayoral appointee to the L.A. County Criminal Justice Coordinating Committee; a member of the L.A. County Bar Assn.'s board of trustees; and a founding member of Japanese American Bar Assn.

**JACL Positions**

As a JACler, she has been a member of East L.A. Chapter's board, a consultant for the PSW Redress Committee, a member of the board and executive committee of JACL-LEC, program chair for this year's PSW LEC Fundraising Dinner, and chair of the PSW U.S.-Japan Relations study group.

**Issues & Answers**

**Q: What do you think JACL's main priorities are?**

**A:** JACL's primary concern historically, today and into the future must be the promotion of the welfare of Americans of Japanese ancestry, to strive to uphold full civil rights and equal justice under the law for all.

Toward that end, our top priority is to secure redress. It is our right to pursue redress not only because we have suffered what remains the most egregious unconstitutional deprivation of liberty in American history, but also because it is our patriotic duty to insist that this nation remove this blot of injustice from our

past in order to reaffirm the high ideals upon which our government was founded. As a result of our internment, we learned the value of freedom and how easily it can be lost. As America celebrates the bicentennial of the Constitution, our fate places us in this historic role: to inspire, to teach and to remedy. This is a challenge we embrace and one which we will work together to bring about.

**Q: What must JACL do now to insure a strong organization in 10 years?**

**A:** In order to ensure a strong organization into the next decade, we need to (1) increase membership to ensure our continued viability; (2) expand new revenue sources to support the range of programs and services to meet the varied needs of the Japanese American community; (3) manage and balance our existing resources to address our present program priorities; (4) develop Sansei leadership capable of

Continued on Page 4

**KAJIHARA**

Continued from Front Page

gineering Design Division, Civil Engineer Support Office.


In 1985, he became an instructor of math and engineering at Ventura (Calif.) College. In 1969 he was listed in Who's Who of Naval Engineers and Scientists, and in 1981 was listed in Who's Who in the State of California.

In addition, he has received various engineering and performance awards between 1956-85.

**JACL Background**

From 1972 to 1980, Kajihara was a member of San Fernando Valley Chapter. In 1981, after he helped reactivate Ventura County Chapter, which had been dormant for 17 years, he served two terms as chapter president. From 1982-83, he served as PSW Redress Chair and on the National Redress Committee, and in 1983 he was elected PSW Governor. Presently, he serves as Finance Chair and Fund Drive Chair of JACL-LEC.

**STORE FOR MR. SHORT**  
 **Joseph's**  
SINCE 1946 **MEN'S WEAR**  
238 E. First Street., Los Angeles, CA 90012  
Tel.: (213) 626-1830  
Specialist in Short and Extra Short Sizes

 **TOYO PRINTING CO.**  
Japanese Phototypesetting  
309 So. San Pedro St., Los Angeles 90013  
(213) 626-8153

 **Paradise Okazu-Ya Restaurant**  
Specializing in Hawaiian-Orient Cuisine  
Open Tue-Sat: 7am-7pm; Sun: 7am-2pm.  
1631 W. Carson St., Torrance 328-5345  
Eat In / Take Out • Closed Mondays Only  
**QUICK SERVICE FROM STEAM TABLE**  
Combination Plate - Very Reasonable Prices  
**OPEN FOR BREAKFASTS AT 7 A.M.**  
POI SAIMIN  
Our own style Portuguese Sausage mix, Spam, Boloni, Chashu. (With eggs & choice of rice or hash browns.) Includes Coffee, Tea or Miso Soup

 **Campbell's Flowers**  
Across St. John's Hosp.  
2032 Santa Monica Blvd.  
Santa Monica, CA.  
KIRK ISHIZUKA 828-0911

**Community Service**

Kajihara is active in the Young Buddhist Assn. of Oxnard Buddhist Temple, serving as an adult advisor. He has been a member of Multi-racial Citizens Advisory Committee, Emergency School Aid Act, Oxnard School District; a member of Calif. Textbook Adoption Committee; president of Oxnard Buddhist Temple; and founder and adult advisor to Oxnard Buddhist Temple Sangha Teens.

**Issues & Answers**

**Q: What do you think JACL's main priorities are?**

**A:** JACL's main priorities are: (1) Pursue redress; (2) Develop a broader funding base; (3) Increase membership; (4) Sponsor programs: (a) Ethnic Concerns, (b) Sansei/Yonsei Leadership Development, (c) Women's Concerns,

Continued on Page 4

**MIKAWAYA SWEET SHOPS**

244 E. 1st St., Los Angeles; (213) 628-4935  
118 Japanese Village Plaza, L.A.; 624-1681  
Little Tokyo Square, 333 So. Alameda, L.A.; (213) 613-0611  
Pacific Square, 1630 Redondo Beach Bl., Gardena; (213) 538-9389

**Naomi's Dress Shop**  
Sports & Casual • Sizes 3 to 8  
133 Japanese Village Plaza Mall  
Los Angeles • 680-1553  
Open Tue-Fri: 9:30-6:30, Sat: 11-9  
Sun: 11-5 Closed: Monday

**Sign Your Next Check on Us**  
During the months of July and August, you'll receive a smooth-writing rolling ball pen when you purchase Sumitomo VISA travelers checks, either in dollars or yen. Offer good while supply lasts. Limit one per customer.  
Expo 86, Hawaii, New York or the world...when you think of travel, think of Sumitomo VISA travelers checks. Available at all Sumitomo offices throughout the state.



**Sumitomo Bank**  
Sumitomo Bank of California Member FDIC



**JAPAN**  
Great Service for 39 Years!

<b>TOKYO</b>	Nonstops from every region of the U.S.A.! We fly nonstop from the East Coast (New York); from the Midwest (Chicago); from the West Coast (Seattle/Tacoma, San Francisco, Los Angeles); and from Honolulu. Also, direct service from Minneapolis/St. Paul.
<b>OSAKA</b>	Convenient service from across the U.S.A. Nonstop service from Honolulu.
<b>OKINAWA</b>	Convenient service from across the U.S.A.
<b>CITIES BEYOND</b>	Northwest Orient makes travel easy to Seoul, Shanghai, Guam, Taipei, Manila, Hong Kong, and Kuala Lumpur.

**THE TRADITIONAL WAY**

Northwest Orient has been flying to Japan longer than any other airline in the world. Even longer than Japan Air Lines!

It's a tradition of service you'll appreciate from the beginning of your transpacific flight. You'll be greeted by a Japanese-and-English speaking escort who will accompany your flight to Japan, serving as an interpreter and answering any questions you may have.

Enroute you'll enjoy the comfort of Northwest Orient's spacious, all-747 international fleet.

We offer low fares, and we can fly you to Japan from cities throughout the U.S.A. For information, call your travel agent or Northwest Orient: (800) 447-4747 toll-free. For Japanese-speaking reservation assistance, call (800) 692-2345 during daytime hours Monday through Friday.



People who know...go  
**NORTHWEST ORIENT**





# pacific citizen

Natl JACL Headquarters, 1765 Sutter St., San Francisco, CA 94115,  
(415) 921-5225

Published by the Japanese American Citizens League every Friday except the first and last weeks of the year at 941 E. 3rd St., Los Angeles, CA 90013; (213) 626-6936. • 2nd Class postage paid at Los Angeles, Ca. • Annual Subscriptions—JACL members: \$10 of national dues provides one-year on a per-household basis. Nonmembers: \$20/yr., \$38 two years, payable in advance. • Foreign addresses: Add U.S.\$12.00; 1st class air — U.S./Canada addresses: \$25 extra, Japan/Europe: U.S.\$60 extra.

• News or opinions expressed by columnists other than the National President or National Director do not necessarily reflect JACL policy.

## OFFICERS

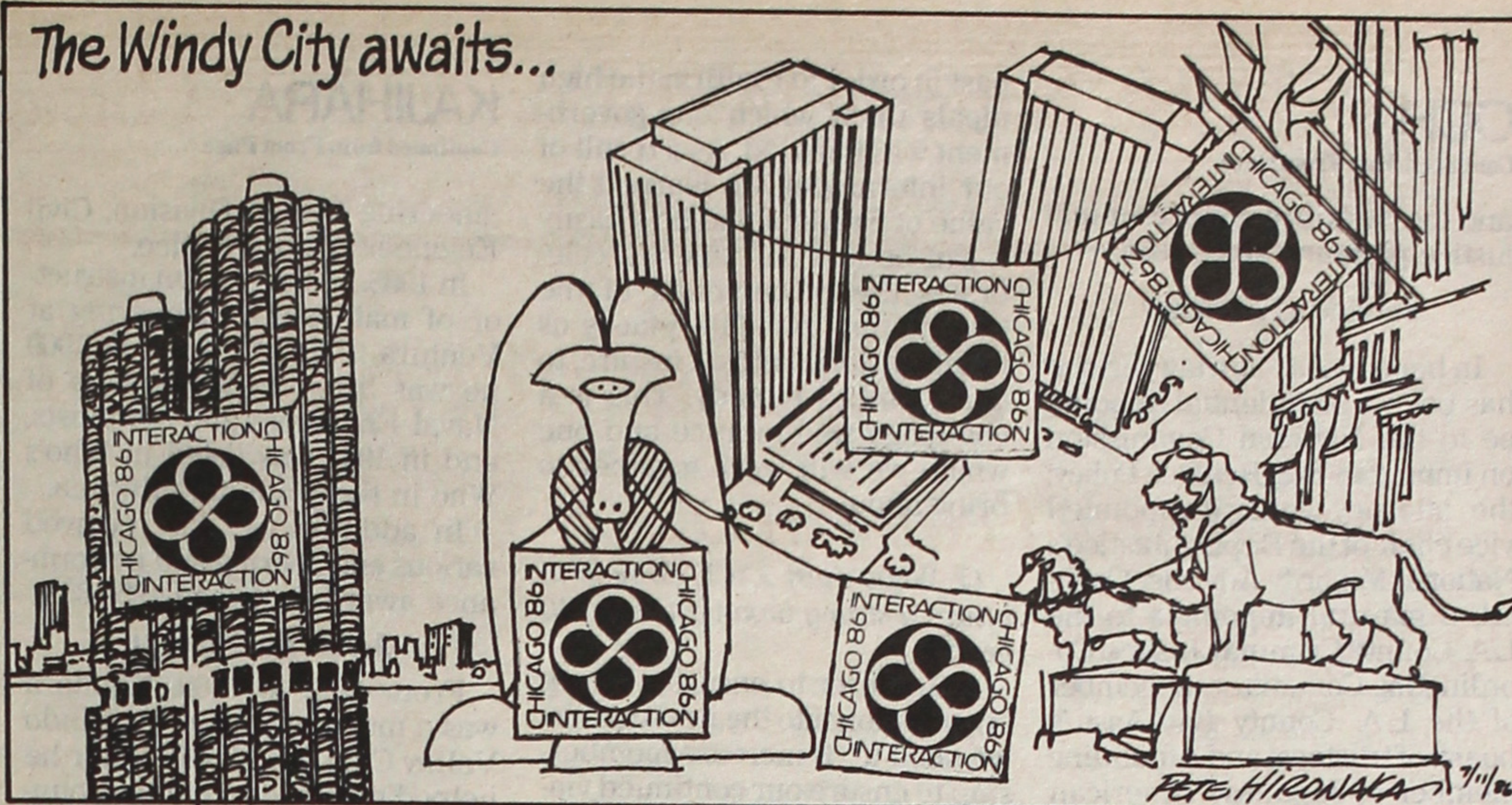
Frank Sato, Nat'l JACL President Dr. Clifford Uyeda, PC Board Chair

## EDITORIAL/BUSINESS STAFF

Acting Editor: Robert Shimabukuro Asst. Editor: J.K. Yamamoto  
Advertising Mgr.: Rick Mornii  
Advertising: Jane M. Ozawa Business/Mailing: Mark Saito  
Circulation: Tomi Hoshizaki  
Production: Mary Imori  
General Mgr./Operations: Harry K. Honda

POSTMASTER: Send address changes to Pacific Citizen,  
941 E. 3rd St., #200, Los Angeles, CA 90013.

## The Windy City awaits...



## The Redress/U.S.-Japan 'Split'

In addition to the questions prepared by the Nominations Committee, the following question was posed to the presidential candidates by PC editor Bob Shimabukuro:

In the 1984-86 biennium, JACL has seemingly been operating, at least on the national level, as a two-party organization: the "redress" faction vs. the "U.S.-Japan relations" faction. The issues and stances have been stated often as if this is an "either/or" proposition, i.e., if you're for one, you're against the other.

Do you see this as a real problem, a manufactured problem, or a red herring with respect to JACL's leadership and the organization as a whole?

If you see this as a real problem, how do you see your role as past National Board members and LEC Board members in contributing to this division and the solution thereof? How do you see the president's role in unifying the organization over this issue, which has effects on other JACL programs and on volunteer/staff relations?

**Kajihara:** I do not feel that JACL at the national level is operating under split factions. The National Council has mandated that redress be the number one priority program for JACL. JACL at the national level is unified in carrying out this mandate. So it is not one against the other.

However, taking U.S.-Japan relations as a program, there are divided factions at all levels, it appears. This division or concern results because the goals and objectives of "U.S.-Japan Relations" are not clear to many. I believe JACL needs to undertake an extensive internal education on the issue and clearly define what role JACL should take, if any. Perhaps the role should be expanded so that the program is

"U.S.-Pacific Rim Nations Relations." Perhaps JACL should forgo U.S.-Japan relations in favor of taking on active coalition-building with other Asians and other minority groups in the U.S.

The division is not "redress" vs. "U.S.-Japan relations," but rather "U.S.-Japan relations, yes or no for JACL." So the National President must bring these two factions together. I believe the President can bring about unification simply by exploring this issue fully among the constituent JACLers. Clear goals and objectives understood and supported by the totality of JACL can be formulated. The President must take an active role in bringing the factions together after the goals and objectives are obtained.

**Ochi:** I do not believe that the National JACL has been operating as a two-party organization. There are individuals who support both priorities, there are those against both, and some split on the questions. Therefore, I do not see it as an either/or proposition.

To the extent that such a perception exists, I believe it has been manufactured for political expedient purposes. The objections about the U.S.-Japan Relations program involvement in international relations and trade imbalance negotiations are clearly red herrings because they are expressly outside the bounds of appropriate JACL purview.

However, if indeed these perceptions exist and are being perpetuated, this can become a real problem unless these misconceptions are refuted.

As President, I would provide the leadership to openly discuss any questions or differences on this or any issue in order that needless internal disputes can be resolved and we can pull together to meet our common goal.

reference by students, historians and scholars. This report was a direct result of the difficult decision made by JACL to support creation of the Commission on Wartime Relocation and Internment of Civilians rather than pursuing alternate approaches.

(2) H.R. 442. Obtaining the co-sponsorship of congresspersons on the Subcommittee on Administrative Law & Governmental Relations and the Judiciary Committee in sufficient numbers to enable the bill to be brought forth to the House floor.

(3) Media exposure, both written and verbal, nationwide on the incarceration experience.

**Q: What should be its goals?**

**A:** Enactment of a meaningful redress legislation.

**Q: What are its tasks ahead?**

**A:** Carry on the work to achieve redress legislation enactment. Raise sufficient monies to fund the redress program.

Continued on page 7

## OCHI

Continued from Page 3

leading JACL into the next century; (5) build alliances with other Asians, as well as other advocacy groups, to improve our effectiveness; and (6) enhance the image and national presence of JACL as a national human and civil rights organization.

**Q: How do you view the redress program at this time? What are its achievements? What should be its goals? What are its tasks ahead?**

**A:** Since 1970, JACL has been the main proponent of redress. Today, we stand at the brink of the culmination of our legislative campaign. Our foremost achievement to date, of course, is the establishment of the Commission on Wartime Relocation & Internment of Civilians and its findings and recommendations. Our goal is the congressional adoption of these recommendations. Our tasks include: (1) mobilization of public support for the issue; (2) adding to the number of co-sponsors; (3) devising a comprehensive legislative strategy; (4) fundraising from non-JACLers and the larger community; and (5) coalition-building to create broad-based support. As President, I would vigorously provide the leadership to bring together a cohesive force to effectively advocate for an ultimate and just resolution of our cause.

**Q: What should JACL's role be with anti-Asian sentiment and violence?**

**A:** JACL has and must continue to play a major leadership role regarding anti-Asian sentiment and violence whether resulting from such factors as immigration and refugee policies or out of domestic and international economic influences. Our role in monitoring incidents of anti-Asian violence; criticizing racially exploitive practices such as Asian mail-order brides; and decrying racially inflammatory events such as the "English Only" initiatives has performed an invaluable service to the Asian American community. The changing demographics in this country—in particular, the rapidly increasing emergence of other Asian groups—provides opportunities for creating linkages for mutual protection and benefit.

The handwriting on the wall suggests that there are troubling times ahead. Those same forces which resulted in our forced uprooting still lurk, waiting for events to cause them to resurface. We need to be vigilant in protecting our rights and being prepared to make an immediate and aggressive response when necessary.

**Q: What do you think JACL's U.S.-Japan relations policy should be?**

**A:** JACL's policy relative to U.S.-Japan relations must be re-examined. Presently, there exists

a lack of understanding of the purpose of the national program. In fact, many myths and misconceptions abound, clouding the picture. As part of this reexamination, there is a need to clarify the definition of the goals and specifically delineate the perimeters of appropriate involvement in this area.

The Gardena resolution which created U.S.-Japan Relations as a national program provided "that JACL become involved with matters of concern in the American-Japanese partnership, with adequate care that JACL does not, either in image or in fact, become a 'front'... for Japan." However, subsequent program activities have not been made clear to the membership. Consequently, news articles with misstatements of the program objectives have gone unchallenged, creating a mistaken impression about the nature of the program.

As a starting point, we need to cautiously explore areas where there is possible agreement about "matters of concern." An appropriate involvement, at a minimum, should include matters where there is direct impact on the welfare of JAs, e.g., "Sanga Moyu." We all have a definite interest in how we our portrayed in the media; our positive image and the goodwill we have generated over three generations is indeed precious and needs preserving.

Continued on Page 7

## Getting the Word Out

Three weeks ago we started to mail letters requesting help from the 1,465 generous donors who have sent contributions to support LEC during the past year.

The first person to reply was our ever-faithful member of the Tulare County Chapter, **Tom Shimasaki**. Each day we are hearing from more and more of you on the reply postcards that you will write to your members of Congress requesting their support for H.R. 442 and S. 1053.

We hope we will get better than 10% reply to this recent project to mount an ever-increasing lobbying campaign. The level must be much more visible to convince Rep. Dan Glickman (D-Kan.) that H.R. 442 is ready for mark-up. Please keep up your letter-writing thanking those who are now co-sponsors and asking for help to get the bill to the full Judiciary Committee.

### District Activities

PSW Governor **Ken Inouye** has completed his task of assigning individuals from his district to make appointments with targeted congressmen from Southern California during the Independence Day district work period.

**Cherry Kinoshita**, PNWDC Regional Redress Coordinator, and **Tim Otani**, PNW Regional Director, have developed a lobbying

### LEC UPDATE:

**Grayce Uyehara**



campaign for the district with the hope of getting support from community organizations.

We are looking to the district governors and redress coordinators to work out a district strategy which will include seeking help from the civil and human rights organizations in each district.

### 'The Meaning of Freedom'

On the evening of July 4 on MacNeil/Lehrer Newshour, our very successful grass-roots lobbyist **Tom Kometani** appeared on the 25-minute segment, "The Meaning of Freedom." Appearing with Kometani were Moorhead Kennedy, former Iranian hostage; Isabel Leitner, Auschwitz survivor; and Everett Alvarez, Vietnam prisoner of war. Kometani was seven years old when he went with his family to Pinedale Assembly Center, then spent a year at Tule Lake and another year at the Heart Mountain Relocation Center. He was

ten years old when he regained his freedom.

Kometani described the American concentration camps located in desolate areas of our nation, where families were confined to a room; the loss of family life; and the subsequent stigma of having been in camp. He concluded that America is a place where such an injustice can be remedied with the bills that are before Congress today.

We are proud of Kometani and his efforts for the cause of redress, an example of commitment tied to action.

### 'Visible Target'

Later the same evening on PBS, "Visible Target" was shown in the Philadelphia area at 10:30 p.m. The story of the evacuation on Bainbridge Island in Washington state was a first-rate program to show on Independence Day.

The story of Walt and Mildred Woodward, former publishers of Bainbridge Review, is woven into the documentary. (See page 1 story on the Woodwards.)

The film reveals the deeply-ingrained warmth and sensitivity of the Woodwards toward the Japanese American community and the reciprocal feelings of the JA community toward the Woodwards. Watch for the showing on your local PBS station.

## KAJIHARA

Continued from Page 3

(d) Aging & Retirement, (e) Youth, (f) U.S.-Japan Relations.

**Q: What must JACL do now to insure a strong organization in 10 years?**

**A:** Actively work on advancing the priority items specified above.

**Q: How do you view the redress program at this time?**

**A:** JACL has become the organizational spokesperson for seeking redress through the legislative process. As such, it bears a heavy responsibility. JACL must carry on the redress pursuit to a creditable conclusion.

**Q: What are its achievements?**

**A:** (1) *Personal Justice Denied*. The issuance by the government of a document which details the tragic incarceration experience of Japanese Americans. This report will last forever for use as



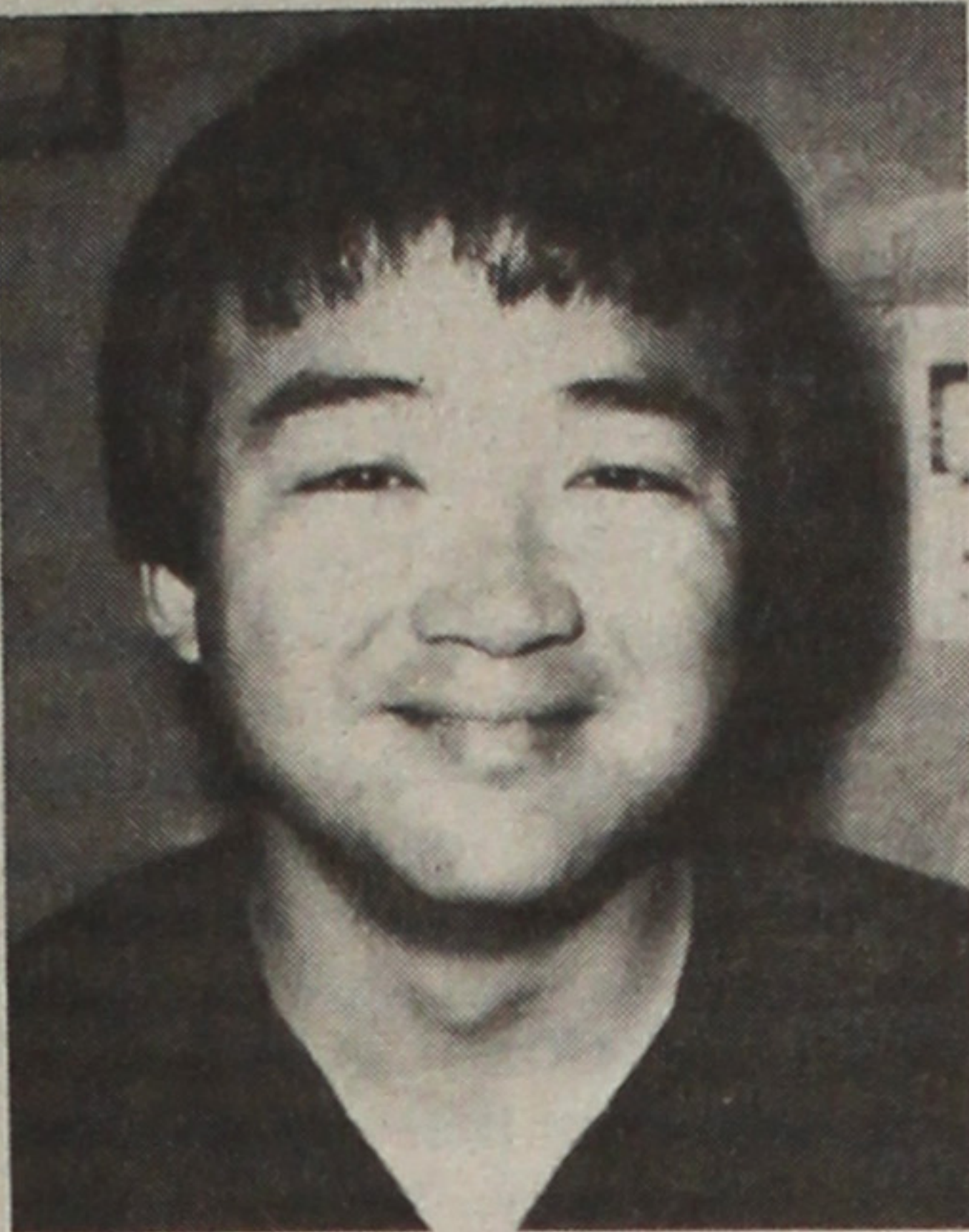
## Candidates for National JACL Office

### Secretary/Treasurer

The National JACL Secretary/Treasurer's race features two candidates: incumbent Gene Takamine of Selanoco Chapter and Alan Nishi of French Camp Chapter. Attorney Takamine has been endorsed by Pacific Southwest District, while Nishi, an agricultural loan officer, has the endorsement of No. Calif./W. Nev./Pacific District.

Article VII, Section 1 (g) states:

"The Secretary/Treasurer shall account for and oversee the monies and other assets received or disbursed by the organization and make payments with the approval of the National Board or the National Council. The books shall be reviewed annually by an independent accountant, and the Secretary/Treasurer shall make biennial reports to the membership."



• **Gene Takamine** presently resides in Fountain Valley, Calif. and has held JACL offices since 1980. He was Selanoco Chapter president in 1980, a PSW Board member in 1981, National JACL Ways & Means Chair in 1983, and an appointee to the JACL-LEC Board in 1985.

He has a B.A. and M.A. from Univ. of Denver, and a J.D. from Western State Univ. of Law. He is a member of such political and legal organizations as Calif. Bar Assn., Orange County Bar Assn., American Bar Assn., Japanese American Bar Assn., Japanese American Republicans, Gomez for Congress (campaign chair), Asian Business League, Calif. Japanese American Republicans, and Orange County Asian Republicans.

#### Statement

I believe that the maintenance of the integrity of JACL and the development of its future goals are issues facing us today. The leadership of JACL must be responsive and mindful of the membership and it must reflect its stated objectives.

There is the pursuit of the important issues of Redress, Leadership and Youth. These are goals

mandated by the National Council. There are the issues of Thousand Club, Aging & Retirement, Singles and Womens' Concerns. These are also goals that need furthering in the next biennium.

I would also like to continue in office in order to maintain a stronger continuity at the Secretary/Treasurer role as it is a complex office that takes a year to merely adjust to the many jobs such as Endowment Fund, Finance Committee, Pacific Citizen, JARP, Mas Satow Memorial, Building Fund, and Budget.

It is at this office that the watchdog expectation is met and this can only be accomplished by continuity instead of replacing a new treasurer every two years.

Those in power can only rule by the consent of the governed and I believe that I will try to continue to represent the sentiment of the membership of JACL.



Photo by Richard Izui/Richard Izui Photography

NATIONAL JACL CONVENTION COMMITTEE CHAIRPERSONS—From left: 1st row—Tina Adachi (Women's Caucus Luncheon), Aya Takada ("Treasures of Today" Exhibition), Perry Miyake (Convention Souvenir Booklet); 2nd row—Chiye Tomihiro (Treasurer), Art Morimitsu (Co-chair, Masaoka DPSA Dinner), Hiro Mayeda (Masaoka DPSA Committee), Carol Yoshino (Registration); 3rd row—Don Sakamoto (JAYs Advisor), Jim Fujimoto (General Operations), Shig Wakamatsu (Co-chair, Masaoka DPSA Dinner); 4th row—Ron Yoshino (National Convention Chairman), Lary Schectman (Public Relations). Not pictured: Lillian Kimura (Chicago Today Bus Tour and Windy City Nitecap), Paul Igasaki and Tom Teraji (Co-chairs, Kickoff Dinner), Patti Adachi (Speech & Forensic Competition), Tsune Nakagawa (Sayonara Banquet and Ball), Frank Sakamoto (Transportation).

• **Alan Nishi** hails from Stockton, Calif. and is presently French Camp Chapter president. An active member of the chapter since 1981, he has also held the positions of corresponding secretary and first vice president. He is serving his second term as chapter president.

Nishi is also the secretary for the NCVNP District Board, and has been a member of the Executive Board since March 1985.

He is currently on the National Awards and Recognitions Committee and was serving on the Nominations Committee until he declared his candidacy.

Nishi is also a member of the Stockton East Rotary Club and a past member of Tracy Breakfast Lions Club. He has served as chair and vice-chair of National Assn. of Credit Managers and Stockton Agri-Business Group, and on the committee to erect the Stockton Assembly Center Monument on the San Joaquin County Fairgrounds.

Nishi was born in Sacramento and spent his childhood in Davis, Calif. A 1979 honors graduate of Calif. Polytechnic State Univ., San Luis Obispo in agricultural business management, he is currently assistant branch manager of Stockton Production Credit Assn.

#### Statement

I strongly believe that JACL's main purpose and priority is the pursuit of safeguarding the civil rights of all Asian Americans. I feel that JACL should never lose sight of this primary role.

No matter where we live or work, racial prejudices do exist whether or not we realize it or not; this demonstrates the need for a strong Asian American organization like JACL to insure that the rights of Asian Americans are not violated. No other Asian American organization has a track record like ours in this respect.

Next to JACL's objective of achieving full redress, I believe



we should be focusing our attention on the recruitment and leadership of younger members to insure a strong and stable membership. Now is the time we should be addressing this issue, which is crucial to the future survival of JACL. I believe that next to redress, this issue should be given top priority by our organization during the coming biennium.



**MARY NISHIMOTO** brings a fresh leadership approach which will propel JACL forward. Confident in her abilities, we enthusiastically endorse her as **THE RIGHT CHOICE** for **NATIONAL JACL VICE PRESIDENT FOR MEMBERSHIP SERVICES & 1000 CLUB.**

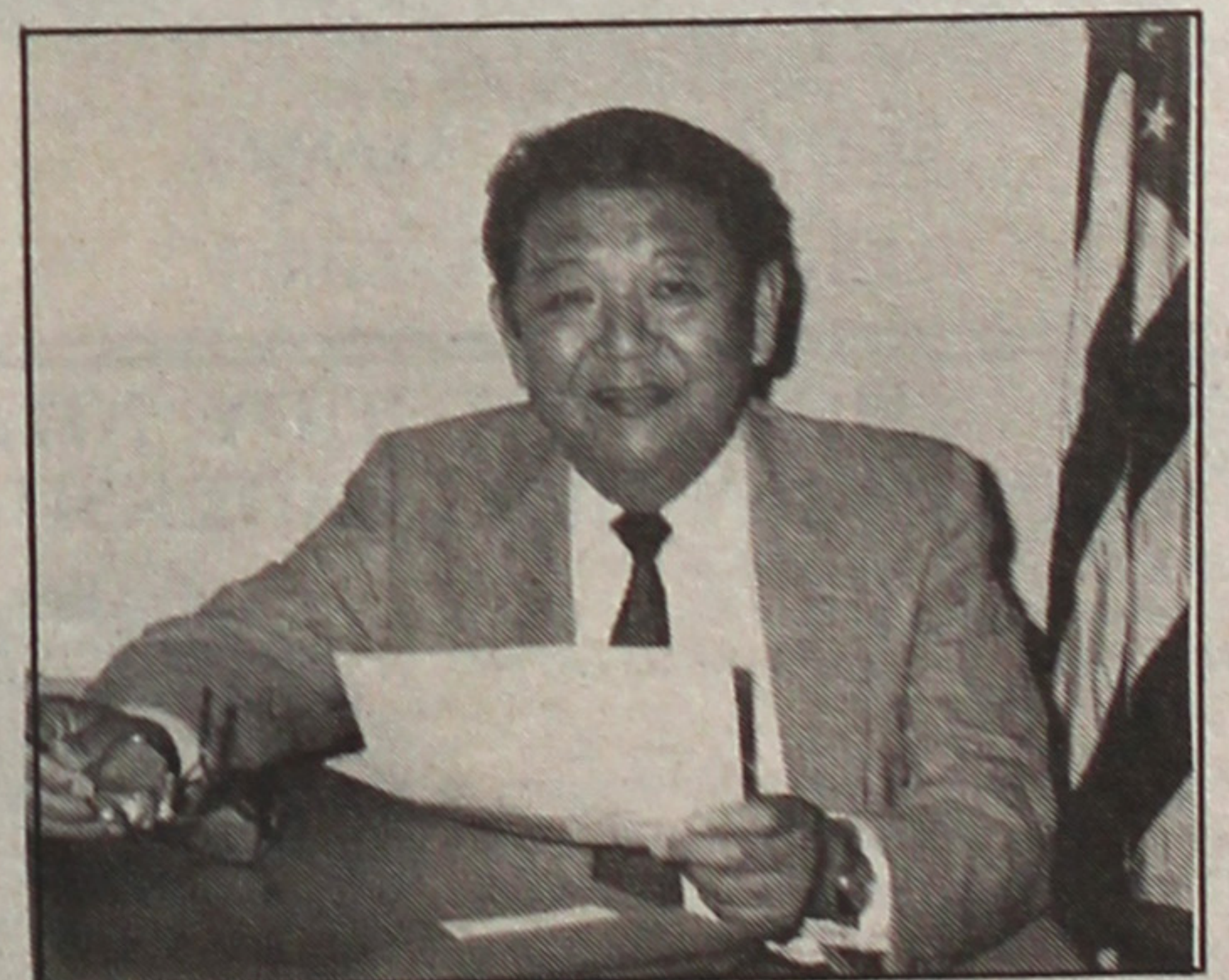
MIKI HIMENO  
IRENE HIRANO  
J.D. HOKOYAMA  
KEN INOUE, C.P.A.  
YOSH NAKASHIMA, D.D.S.  
ROY NISHIKAWA  
ROSE OCHI, ESQ.  
PAT & LILY OKURA  
FRANK SAKAMOTO, O.D.  
MAE TAKAHASHI, PHARM D.  
CLIFFORD UYEDA, M.D.

PACIFIC SOUTHWEST DISTRICT COUNCIL

## vote MIKE SUZUKI

### Vice President for Public Affairs

- Age 57, born in Oakland, California
- Incarcerated at Tanforan and Topaz, 1942-45
- Governor, Eastern District Council, 1983-86
- Vice President for Operations, National JACL, 1970-72
- Chapter President, Hollywood and Washington, DC
- Associate Commissioner of U.S. Administration on Aging since 1983, responsible for \$650 million social service budget
- Social worker in Los Angeles, Sacramento and New York City (MSW degree, U.C. Berkeley)



**"The time is now for redress. I am committed to unifying broad-based support for its timely resolution. Our public affairs program must stress unity in JACL, develop new leaders, and seek the support of other groups that share our commitment to human rights."**



## VP—Membership & Services

The VP for 1000 Club, Membership and Services is responsible for monitoring matters and committees relating to membership development and membership services, and for promoting the enrollment of all categories of membership.



**Mary Nishimoto** of Downtown Los Angeles Chapter is the only candidate officially filed with the Nominations Committee for this office. She is the current president of her chapter.

Her other JACL activities include: chair, planning committee for the Third Decade of Citizenship luncheon, which honored Issei who became naturalized citizens between 1954-65; co-chair, Pacific Southwest District Speech Contest; member, PSW Women's Concerns Committee; participant, PSW Leadership Development Program; and member, PSW Conference Planning Committee.

Nishimoto is active in community affairs, having been involved in Asian Rehabilitation Services in Los Angeles, Asian/Pacific Women's Network of Los Angeles, and National Women's Political Caucus (L.A. Metro chapter).

As a founding member of the women's network, she edited its newsletter, Network News; wrote its 1985 scholarship report; and drafted its scholarship application, application criteria sheet, evaluation sheet and list of proposed questions for personal interviews.

Nishimoto holds a B.A. in psychology from UCLA and an M.A. in public administration from Bernard M. Baruch College of City Univ. of N.Y.

### Platform Statement

JACL should be at the forefront of organizations protecting the rights and interests of Asian Americans. In the past we have the distinction of being among the oldest, pioneering legislative changes. Like other Sansei/Yonsei I acknowledge the contributions of the Issei pioneers and the Nisei who built JACL into the national organization that it is today. We have a good foundation, but we still have much to do.

The agenda facing us in the '80s contains some substantive civil rights issues. JACL—through its redress education program and now Legislative Education Committee—is working to bring about

redress and reparations, such that due process for all Americans will be ensured. JACL continues to document the escalating anti-Asian sentiment—sometimes resulting in violence—across the country.

I want to do my part to ensure that JACL continues to be the champion advocate for all Americans. JACL has invested in me and I feel that it is time to give back to JACL. Today's issues of redress and anti-Asian sentiment concern me; I will use my networking contacts to work internal and external to JACL to move these issues forward.

I believe that JACL should continue to develop its older and younger constituencies, and support the efforts of the Aging and Retirement and Sansei Leadership committees to that end.

The beauty of JACL is that there is a place for everyone; for example, the housewife, the career professional, the student, the senior citizen. Now is the time to recruit these constituencies, especially when involvement in JACL fluctuates with the various cycles in life.

I see the role of VP for Membership Services as working with the districts and chapters in the areas of recruitment and membership development. I plan to create networks of district liaisons by phone to address membership strategies; what monies are available can then be used to implement the strategies.

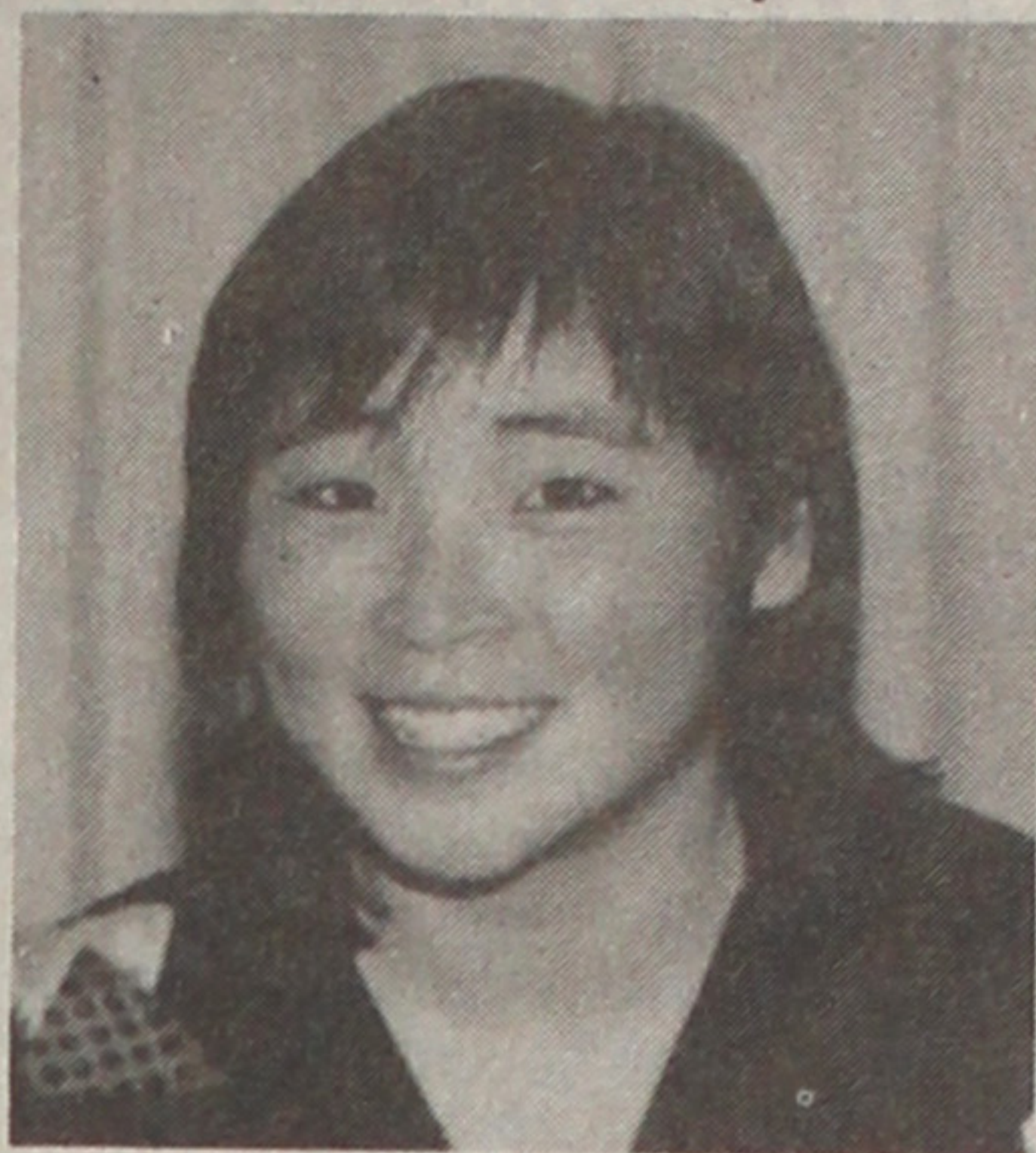
Such a campaign can include tools such as brochures to accompany a multi-media presentation, aimed, for example, toward individuals who plan to start or who have recently started families.

One of the themes associated with this effort would urge membership in JACL for the future of their children. I would like to "market" our insurance program—already developed by the Insurance Committee—to attract the small businessman/entrepreneur who might benefit from our group insurance rates.

I envision my responsibilities to JACL as threefold: using my perspective on minority issues I will continue to advocate for equality under the law. I will bring leadership in public policy and development to the National Board. As VP for Membership Services I will work to attract specific groups. These efforts

## National Youth Council Chair

The National Youth Council Chair calls meetings of the National Youth Council, presides at such meetings, and is responsible for carrying out all duties of the National Youth Council as prescribed by that body.



**Diana Kato** of Seattle is the only declared candidate for this office. She is presently Seattle Chapter historian and secretary of Seattle Japanese American Youth (JAYs). She has served as Pacific Northwest District youth representative and JAYs youth representative in 1984-85, and JAYs president in 1983. She has been a Seattle Chapter board member since 1984.

Kato has served on her chapter's Scholarship Committee (co-chair, 1986), Records and Library Committee (co-chair, 1986), Nominations Committee, and Sports Committee. She has also served as co-chair of the JAYs "Focus on Your Life" committee, a student development workshop sponsored by the National Youth Council, and has been a member of the JAYs officers board since 1983.

Since 1981, Kato has participated in numerous Seattle community events, including benefits for Keiro Nursing Home, International District Street Fairs, Blaine Memorial Methodist Church affairs, and Kawabe House Christmas caroling.

She is currently a post-baccalaureate student in Univ. of Washington's elementary educa-

tion program and holds a B.S. degree from Univ. of Washington. She is a 1981 graduate of Renton (Wash.) H.S.

### Statement

The JACL has built the reputation of being one of the nation's leading human and civil rights organizations. The issue of redress is currently the foremost priority of JACL. If chosen to be a representative of JACL Youth, I feel our concerns must run concurrent to those of the overall organization.

The youth are vital to the future of JACL. A friend once told me, "The past means little or nothing unless we use it for the benefit of our people in the present and the future." I deeply believe in this statement. As youth, we have the opportunity to continue the work started by preceding generations: opening doors which block our way to becoming more active and accepted in American society.

Through my involvement with JACL at the youth, chapter, district and national levels, I have increased my insight of the diversity of programs addressed by the organization. I would like to apply this knowledge and experience to the further development of our youth program.

Youth involvement can be initially increased by sponsoring programs targeted towards special issues of Japanese American youth. These may range from careers to cultural heritage awareness, all of which promote an understanding of Japanese Americans to those involved and the general public.

The programs will in turn make young people aware of the activities of the JACL and perhaps realize the positive contributions that can be made to society through our organization. The potential of the youth program is unlimited.

I acknowledge that election to the office of National Youth Council Chairperson, in and of itself, will not bring about my goal of youth involvement in JACL and the crucial issues it addresses. However, utilizing the resources accessible to this position will allow me to generate the elements necessary toward achieving my goal. If chosen to fill the office of National Youth Council Chairperson, I will represent myself and JACL through a Japanese American tradition of integrity and honor.



DELIGHTFUL  
seafood treats  
DELICIOUS and  
so easy to prepare

**MRS. FRIDAY'S**  
Gourmet Breaded Shrimps and Fish Fillets

Fishing Processors, 1327 E. 15th St., Los Angeles, (213) 746-1307



Julie, Marc, Jennifer, Gene  
**RE-ELECT GENE TAKAMINE**  
NATIONAL JACL  
SECRETARY-TREASURER

## PEOPLE WHO KNOW JUDY NIIZAWA SAY THIS ABOUT HER LEADERSHIP . . .

"Since Judy served as our president, we've accomplished a lot; the club got better. Really."  
—**Katie Hironaka**, Nisei, Founder of San Jose JACL Singles Club.

"Judy is the heart and muscle behind redress in Santa Clara County."—**Rod Diridon**, Santa Clara County Supervisor, author of SCC redress law.

"Judy's work in the JACL makes our whole chapter look good."—**Michael Honda**, San Jose JACL President 1974-76.

"Judy Niizawa has brought about consensus to the community." (1981)—**Dan McCorguodale**, California State Senator.

"When I think of the Asian American woman who has clout in SCC, I think of Judy Niizawa."—**Susanne Wilson**, Chairperson, Santa Clara County Board of Supervisors.



### JACL BACKGROUND

NCWNPDC: V. Gov., Membership Comm.; Educ. Comm.; Treas.; Secy; Washington, D.C. Leadership Trainee; Redress Chair. **SAN JOSE CHAPTER:** Pres. 1980 & 1981; VP Civic Affairs; Redress Chair 1977-82; Co-founder Penin. Redress Comm 1980; prepared comm. witnesses; testified before Fed. Commission; newsletter contributor, editor; est. building renovation comm.; LEC prime solicitor; VP Program (1980).

FOR A VICE PRESIDENT OF MEMBERSHIP SERVICES  
WHO WILL LISTEN TO WHAT PEOPLE SAY  
**VOTE FOR JUDY NIIZAWA**

Jerry Enomoto, Campaign Chair • Sharon Uyeda, Vice Chair • Nancy Tajima, Mgr. • Lucy Adachi, Recorder



Japanese Charms  
Japanese Names  
Japanese Family Crests

12558 Valley View, Garden Grove, CA 92645 • (714) 895-4554



## The P.S.W.D. Endorsed Candidate For NATIONAL JACL PRESIDENT

A DEMONSTRATED LEADER • 1981-83 President, Ventura County JACL  
• 1982-83 Chair, PSWD Redress  
• 1983-85 Governor, PSWD  
• 1985-Present, Chair, LEC Fund Drive.

### ENDORSED BY:

Don Arima, Olympia, WA  
Harry Arima, Indio, CA  
Jim Asakura, Los Angeles, CA  
George Baba, Stockton, CA  
Nancy/Gary Barber, Ventura, CA  
Al/Dorothy Dohi, Gardena, CA  
Carl/May Doi, Gardena, CA  
Ron Doi, Gardena, CA  
Jerry Enomoto, Sacramento, CA  
Bea Fujimoto, Los Angeles, CA  
Grace/Jack Fujimoto, Los Angeles, CA  
John Fujita, Gardena, CA  
Yo Furuta, Carson, CA  
Yas/Nancy Gohata, Arleta, CA  
George Goto, Las Vegas, NV  
Kiyu Hamamura, Upland, CA  
Fern Haning, Gardena, CA  
Deena Hard, Gardena, CA  
Linda Hara, Los Angeles, CA  
Sumi Harada, Riverside, CA  
Nathan Harimoto, Thousand Oaks, CA  
Mike Hide, Goleta, CA  
Betty/Frank Hiji, Oxnard, CA  
Masako Hirata, Riverside, CA  
Mas Hironaka, San Diego, CA  
Micko/Ken Hiroshima, Camarillo, CA  
Tad Hirota, Berkeley, CA  
Fred Hoshiyama, Culver City, CA  
Helen/Shigeto Inouye, Oxnard, CA  
Mae Inouye, Huntington Beach, CA  
Tsumo/Taro Inouye, Oxnard, CA  
Kiyoe Ishida, Los Angeles, CA  
Kei Ishigami, Los Angeles, CA  
Mary/Iwao Ishino, Detroit, MI

Kensaku/Suzuka Ito, Ventura, CA  
Yonejiro/Tsuyako Ito, Ventura, CA  
Masako/Yo Iwata, Oxnard, CA  
Jane Kaihatsu, San Francisco, CA  
Jonathan Kaji, Gardena, CA  
Alicia (Los Angeles)/Claudia (Alhambra)/Julia (Agoura Hills)/Isuko Kajihara, Oxnard, CA  
Midori Watanabe Kamei, Rancho Palos Verdes, CA  
Mitsugi Kasai, Salt Lake City, UT  
Sumiko/Tsujio Kato, Oxnard, CA  
Yosh Katsura, Ventura, CA  
Joan/Frank Kawase, Brea, CA  
Sue Ann Kenmotsu, Oxnard, CA  
Jack/Sumi Kiba, Oxnard, CA  
Col. Young O. Kim (ret.), Gardena, CA  
Rusty Kimura, Gardena, CA  
Marion/Bill Kita, Camarillo, CA  
Frances Kitagawa, Marina Del Rey, CA  
Teri/Ron Komatsu, Oxnard, CA  
Tom/Jane Kometsani, Warren, NJ  
Sono Kondo, Van Nuys, CA  
Kathy/Sam Koshio, Ft. Lupton, CO  
Junji/Kathryn Kumamoto, Riverside, CA  
Mitzi/Aikushida, Northridge, CA  
Annabelle Lee, Gardena, CA  
Roy Makino, Woodland Hills, CA  
Ellen/Anthony Matsuo, Camarillo, CA  
Jim Matsuka, Monterey Park, CA  
Mitzi Matsushita, Los Angeles, CA  
Gene/Yuzo Matsusuy, Oxnard, CA  
Charles Mayeda, Oxnard, CA  
Yo Minami, Gardena, CA  
Meriko Mori, Los Angeles, CA  
Art Morimatsu, Chicago, IL

George Morimoto, Gardena, CA  
Jack Morishima, Santa Maria, CA  
Norioyoshi/Mae Moriwaki, Oxnard, CA  
Nobu Miyoshi, Philadelphia, PA  
Ruth Mizobe, Irvine, CA  
Ami Nakahori, Torrance, CA  
Marian Nagano, Gardena, CA  
Mutsumi/Tad Nakashima, Oxnard, CA  
John/Yoshiko Niizawa, Sanger, CA  
Miriam/Kaz Nishida, Carson, CA  
Chiyo/Ko Minobu Nishimori, Sonoma, CA  
Harriet John Nishizaka, Granada Hills, CA  
Jim/Mae Nishizaka, Gardena, CA  
Shunya/Teruko Nishizaka, Cresskill, NJ  
Dr. Mary/James Oda, North Hollywood, CA  
Dolly/Jim Ogata, San Bernardino, CA  
Mary/George Ogawa, Torrance, CA  
George Ohashi, Santa Barbara, CA  
Min/May Okamoto, Oxnard, CA  
Sue Ota, Westminster, CA  
Dr. Ken/Kazuo Oye, Santa Maria, CA  
Allan Pipkin, El Centro, CA  
Dorothy/Doug Russ, Camarillo, CA  
Henry/Julianne Sakai, Long Beach, CA  
Frank Sakamoto, Chicago, IL  
Joe Sakamoto, Carson, CA  
Bacon Sakatani, West Covina, CA  
Hana Uno Shepard, Gardena, CA  
Marian/Phil Shigekuni, Sepulveda, CA  
Ada Shimabuku, Lomita, CA  
Tom/Shimasaki, Lindsay, CA  
Anthony Shimizu, Phoenix, AZ  
Lea/Ron/Keith Shiozaki, Gardena, CA  
Mary/Louie Sugawara, Oxnard, CA

Chester Sugimoto, Gardena, CA  
Sam Sumada, Mission Hills, CA  
Fumi Takahashi, Carson, CA  
Nancy/William Takano, Riverside, CA  
Judy/Nao Takasu, Oxnard, CA  
George Takemoto, Marina Del Rey, CA  
Mabel Takimoto, Pacoima, CA  
Henry/Michiko Tanaka, Oxnard, CA  
Dorene Tsukida, Oxnard, CA  
Demi Uejima, Azusa, CA  
Yas/Claudia Umeda, Camarillo, CA  
Doug Urata, San Bernardino, CA  
Helen/Jim Urata, San Bernardino, CA  
Hiro Uyehara, West Chester, PA  
Terry/Sam Uyehara, Northridge, CA  
Shig Wakamatsu, Chicago, IL  
Akemi/Gregory Wood, Culver City, CA  
Marion Wong, Gardena, CA  
Mabel/Tad Yamada, Fort Lee, NJ  
Mack Yamaguchi, Pasadena, CA  
Betty/Don Yamaoka, Granada Hills, CA  
Tak/Molly Yamashita, Oxnard, CA  
Denny Yasuhara, Spokane, WA  
Jane/Fred Yasukochi, Ventura, CA  
Miyu Yasukochi, Torrance, CA  
Minoru/True Yasui, Denver, CO  
Tut Yata, Los Angeles, CA  
Bill Yeto, Ventura, CA  
Lucy Yoshihara, Los Angeles, CA  
Vernon Yoshioaka, San Diego, CA  
Michiko Yoshimura, Riverside, CA  
Betty Yumori, Venice, CA  
(A Partial List)



## VP-General Operations

The VP for General Operations shall be responsible for monitoring the internal affairs of the national organization, including matters and committees relating to personnel, structural organization, management and operation of national and district offices, and National Convention.

Incumbent **Yosh Nakashima** of San Francisco is running unopposed for this office. He graduated in 1957 from Fresno State College in biology and attained his D.D.S. from the College of Physicians and Surgeons in San Francisco. He has been a practicing dentist for over 20 years.

He has been active in various professional organizations and has been involved in Japanese American Democratic Club, San Francisco Historical Society Project, Pine United Methodist Church, and Center for Japanese American Studies. He is past president of San Francisco Dental Society, past chair and present trustee of Calif. Dental Assn.'s Council on Dental Health,

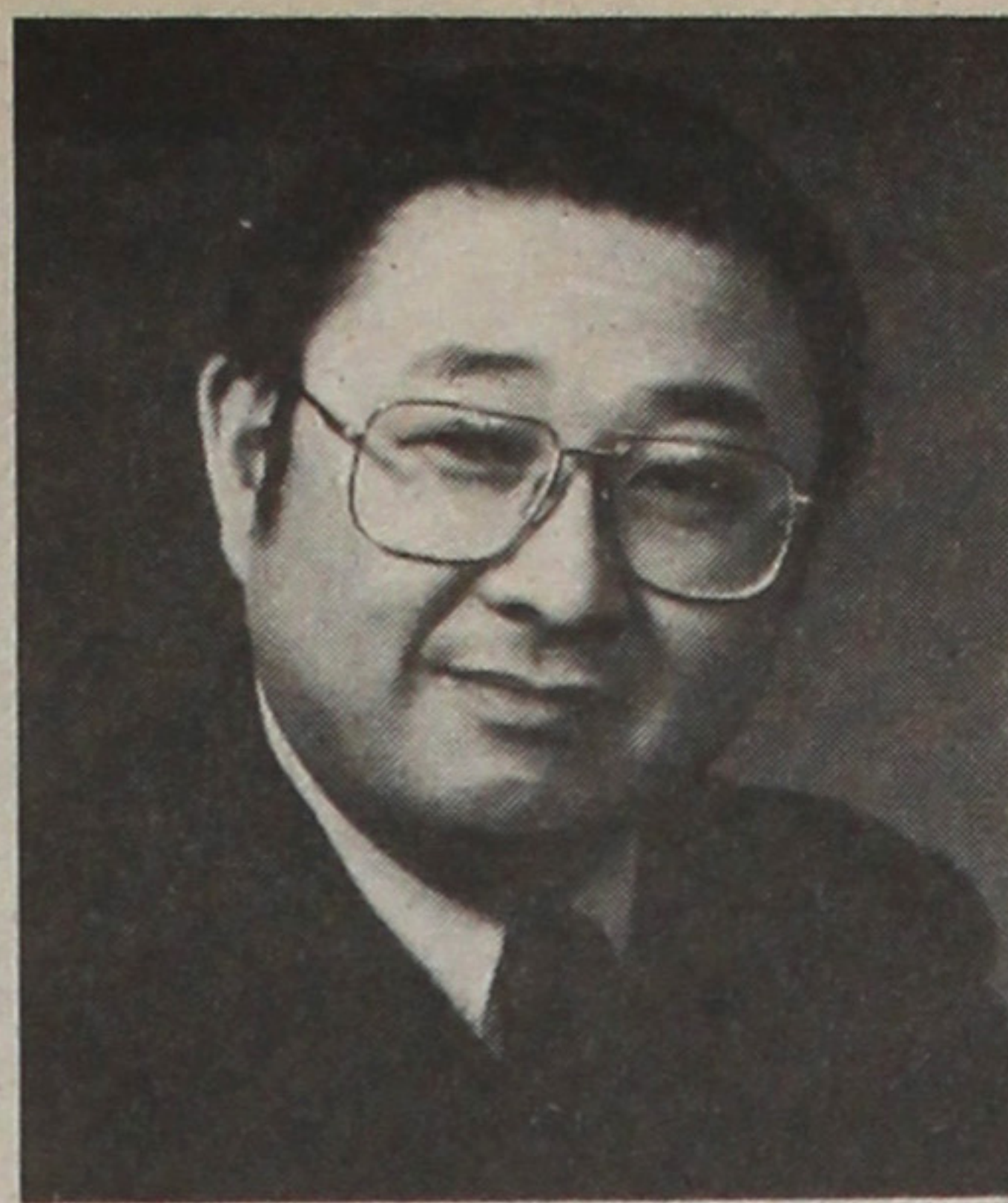
and vice president of San Francisco's City Planning Commission.

He has been Golden Gate Chapter president, vice president, treasurer and delegate; and executive board member and two-term governor of No. Calif.-W. Nev.-Pacific District Council. He was elected National JACL VP of Operations in 1984 after serving as chair of the Governors' Caucus (1982-84).

### Platform

Nakashima has pledged to: (1) complete chapter president's manual; (2) complete National Convention Manual; and (3) update all committees of the office.

He listed the following as his objectives: (a) continually update and maintain a strong and viable personnel manual; (b) assure the best possible morale of the staff; (c) enhance communication within the organization; (d) maintain the essence of the chapter as the key and source of strength of JACL; (e) promote efficiency in processing of various paperwork,



especially membership renewal and staff evaluations and record-keeping; (f) assist with improved record-keeping at all levels; and (g) encourage greater use of VP for various functions.

Nakashima adds, "Although much was accomplished with a lot of assistance by the National staff and by the chairs of the National Committees of the office, there is still much that should be done. I believe that another two years in office can complete my original goals and objectives of 1984. We request your support so that we may complete the projects in mind."

## VP-Planning & Development

The VP for Planning & Development is charged with the responsibility of monitoring matters and committees relating to research, studies, grants, youth, scholarships, historical preservation, and formulation of long-range goals and policies.



**William Marutani**, the only announced candidate for this position, is known to PC readers for his "East Wind" column. He has served as Philadelphia Chapter president, Eastern District governor, EDC Thousand Club chair, and JACL National Legal Counsel (1962-70).

In 1966, Marutani was named JACLer of the Biennium in recognition of his personal devotion to the cause of civil rights for having volunteered his services to defend persons in Bogalusa, La., in segregation and voting rights cases.

In 1967, he became the first Asian American lawyer to present oral arguments before the Supreme Court in *Loving v. Virginia*. Virginia's anti-miscegenation law was declared unconstitutional in that case.

In 1975, he became the first Asian American outside the Pacific Basin to sit as a judge of a court of record when Gov. Milton Shapp appointed him to the Pennsylvania Court of Common Pleas. In April of this year, he stepped down from his position to return to private practice.

Marutani was born in Kent, Wash. and was educated at Univ. of Washington, Dakota Wesleyan Univ., and Univ. of Chicago. He received his law degree from Univ. of Chicago Law School.

He has been active in numerous civil rights organizations, including an advisory committee to the U.S. Commission on Civil Rights, Nationalities Service Center, and the American Civil Liberties Union's Advisory Committee on Minorities. He also served on the Commission on Wartime Relocation and Internment of Civilians.

### Platform

**JACL's Long-Range Goals:** In consultation with membership, acting through chapters and district councils to receive, evaluate and present to the National Board/National Council, goals for JACL for the next decade.

**Review of Current Practices:** (a) Codification of JACL resolutions, National Council directives, etc., in an organized manner so readily available from a single

source. This to be done in consultation with and with cooperation of National Legal Counsel.

(b) Management of National Conventions—provide for orderly and deliberate evaluation of convention bids by an established Convention Committee to establish and apply specific standards covering areas such as travel convenience/cost, quality/reasonableness of housing, share of expenses/profits with National, etc. Convention Committee to submit recommendations to National Council.

Also: Develop a Convention Handbook to be passed on to successful bidder so that a guideline can be provided to the convention chapter re approximate costs, arrangements, etc.; Develop an agreement whereby National is reimbursed for costs and shares a percentage of profits.

(c) Relationship/Support of National Staff—Along with appropriate committees including national vice president, encourage review of relationship of National staff to officers, districts and chapters; seek to strengthen support for staff where deemed needed.

## National-Level Concerns

by **Henry Sakai**  
Past PC Board Chair

A disturbing thing seems to be occurring in JACL at the national level and, if so, needs to be corrected by the National Council at the convention. It seems that there is a pro-LEC/redress group and another group lukewarm to LEC (though not necessarily anti-redress) and more in favor of the U.S.-Japan relations program.

Redress has been mandated as the top priority at the last six or more conventions, and JACL has directed a lot of effort and money to achieve redress. As we enter the last two or three years, this is not the time to have division at the national level. If there are differences, they should be worked out and those who can't support the effort should consider stepping aside.

I think the National Council should redirect the National Board and staff as to priorities. I'm not saying that anyone at the national level is speaking against redress; it just seems like they don't support LEC, for whatever reason—which hurts redress.

□ □ □

One thing about the elections that I don't understand is the total lack of publicity in the PC about the elections. I understand from Harry Honda and Bob Shimabukuro that all ads and articles will be in an early July issue. That seems kind of ridiculous, because most chapters meet for the last time before the convention in June and will be pretty well decided on who they will vote for, unless they give the delegates the authority to vote on their own.

I remember a list of candidates coming out about six weeks ago, but since then there's been nothing other than the article stating Judy Niizawa was going to de-

clare for VP of Membership at the convention. Most of the chapters and delegates don't even know most of the candidates, and since there aren't any articles I don't know how they know who to support. It's very important that the chapters and delegates know the candidates and really find out whether their leaders are doers or just smooth talkers.

The big problem with JACL (and, I'm sure, other organizations too) is that many people, for whatever reason, take responsible positions and then do nothing, thus hurting the organization. Therefore, delegates, before voting, must ask candidates what they have done, not necessarily what they plan to do, because candidates can promise anything, as evidenced in the past. Don't let it become a popularity contest.

□ □ □

Once again, JACL is having financial problems, primarily because membership is dropping and there are very few outside contributions. Membership dropped in 1985 and is running behind 1985 this year. This means another drop unless the professional group that's doing a mailout campaign can bring in a few thousand members.

JACL needs to launch a membership program, otherwise membership will continue dropping. In addition, some type of automated membership needs to be implemented, since it's taking two to three months for membership processing from the time an individual pays to the time it finally gets to the PC. The PC cuts off after 60 days, so some people are hurt by the unnecessary delays. An automated system similar to the one that should have been implemented in 1984 needs to be put in place as soon as possible. JACL can't wait much longer to do something about membership. Time is rapidly running out.

## ROSE OCHI A Dedicated Leader



### For National JACL President

- Experienced Leadership
- Effective Advocate
- Long-standing Record of Community Service

**A UNIFYING SPIRIT TO BRING US TOGETHER  
TO MEET THE CHALLENGES AHEAD.**

OCHI FOR PRESIDENT COMMITTEE

## CHERRY KINOSHITA for Vice President of Public Affairs

ENDORSED BY PACIFIC NORTHWEST DISTRICT COUNCIL  
JACLer OF THE BIENNIUM - CO-AWARDEE 1984  
MINORU MASUDA MEMORIAL COMMUNITY SERVICE AWARD 1984  
UNITED NATIONS-HUMAN RIGHTS AWARD 1983

— A PROVEN TRACK RECORD • A MOVER AND SHAKER —  
ENDORSEMENTS:

Congressman Mike Lowry, 7th District, Washington State  
Mayor Charles Royer, City of Seattle  
Representative Gary Locke, Washington State Legislature  
Paul Isaki, Office of Governor, Special Assistant for Policy  
Lloyd Hara, City Treasurer, Seattle  
Lois Hayasaka, Executive Director, Wash. State Commission Asian Amer. Affairs  
Dr. Donna Leonetti, Executive Director, Nisei Aging Project  
David Okimoto, Director, Dept. of Human Resources  
Lori Matsukawa, News Anchor  
Naomi Sanchez, Vice Chancellor, Seattle Comm. College District  
Karen Seriguchi, Executive Director, Asian American Journalists Association  
Ron Chew, Editor, International Examiner

Gordon Hirabayashi, Prof. Emeritus, Univ. of Alberta  
Hirabayashi coram nobis team:  
Kathryn Banai, Rod Kawakami, Mike Leong, Roger Shimizu,  
Peggy Nagae, Yasui coram nobis Lead Counsel.

Jerry Enomoto Tomio Moriguchi  
Irene Hirano Art Morimitsu  
Fred Hirasuna Cressey Nakagawa  
Tad Hirota Mako/Ben Nakagawa  
J.D. Hokoyama Ken Nakano  
Ken Inouye Mei Nakano  
Toy Kanegai Hank Sakai  
Diana Kato Tom Shimasaki  
Helen/Tak Kawagoe Marshal Sumida  
Don Kazama Chiye Tomihiro  
Chuck Kubokawa Raymond Uno  
Wilson Makabe Jan Yoshiwara

James Tsujimura • Robert Sato, Co-Campaign Chair

ESTABLISHED 1936

## NISEI TRADING

Appliances - TV - Furniture

249 So. San Pedro St.  
Los Angeles, CA 90012  
(213) 624-6601

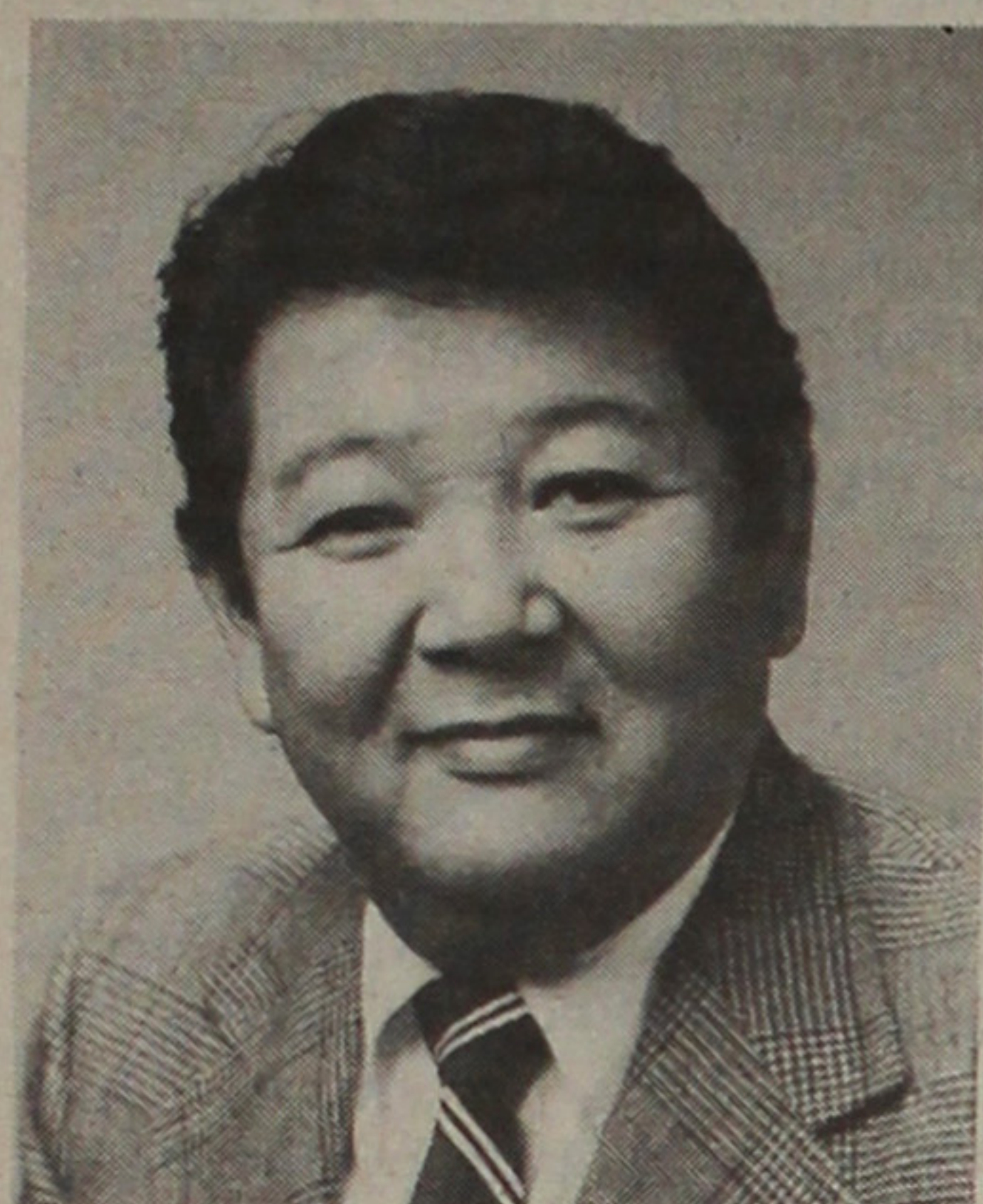


## VP-Public Affairs

One of the most important and hotly contested positions for the coming biennium is that of VP for Public Affairs, largely because redress falls under the responsibility of this office. Three candidates with longtime JACL participation have filed for the office: Cherry Kinoshita (endorsed by Pacific Northwest District), Kaz Mayeda (endorsed by Midwest

District), and Mike Suzuki (endorsed by Eastern District).

As stated in the JACL Bylaws, Article VII, Section 1 (d), the VP for Public Affairs shall be "responsible for monitoring the external affairs of the National organization, including matters and committees relating to legislation, civil rights, public issues, media, and public relations."



and Tribal Programs. He is responsible for grants to the states and Indian tribes for social services and nutrition programs for the nation's elderly. He also supervises the Aging Program units in the 10 regional offices of the Dept. of Health & Human Services.

### Statement

The highest priority of the VP for Public Affairs or any National JACL office is redress, but I believe our fight for justice, our fight for a rightful place as Americans of Japanese ancestry in the land of our birth, extends beyond enactment by Congress of the redress legislation and its implementation by the executive branch of our government.

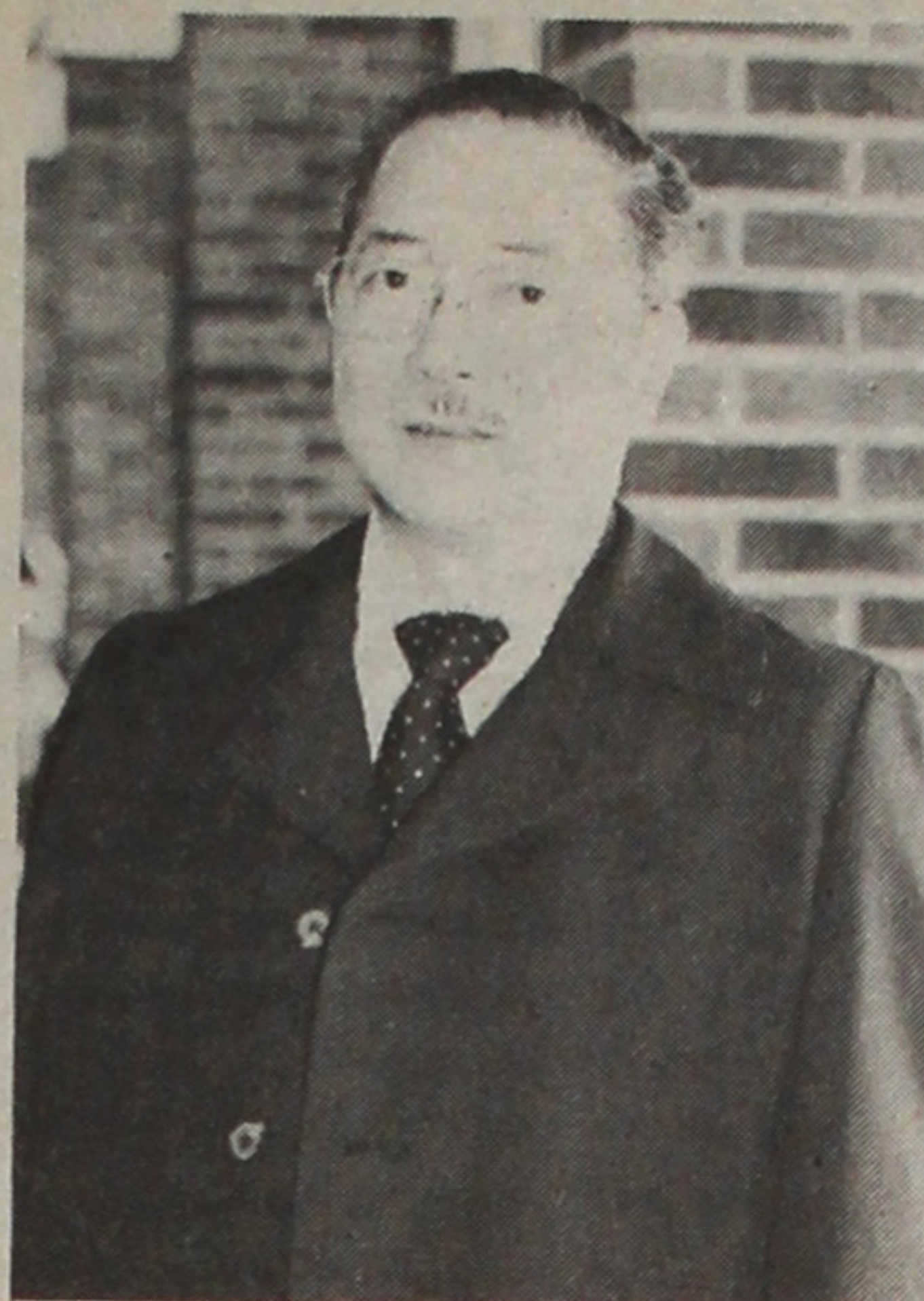
The passage and implementation of redress legislation is a fundamental step that must be achieved, but our struggle does not end there. JACL must reach out in an active way to the many and varied individuals, groups and segments that make up American society. We Americans of Japanese ancestry, just as other Americans with ancestral roots in places around the world with strange sounding names, may be different looking, have darker skin with different habits and mores, but we are full-fledged Americans, just as American as those who trace the immigration to this land by their ancestors hundreds of years before the arrival of our parents and grandparents.

The coming to the shores of this land on the "Nippon Maru" was just as legitimate a passage as the Mayflower. Even if centuries have passed since Plymouth Rock, Angel Island (as well as Ellis Island) entrants all contributed to the vitality, variety and validity of this nation. The American blood spilled in the rescue of the "Lost Battalion" and in other battles of WW2 was just as precious to this country's history as that blood spilled at Lexington and Concord.

I belong to JACL because of my identity as an American of Japanese ancestry. I share a sense of kinship with my fellow Nikkei and take pride in our mutual heritage and accomplishments. I firmly believe JACL should be the instrument through which we Americans of Japanese ancestry, as well as other Americans, establish our rightful place as part of the warp and woof of our nation's social fabric.

The passage of redress legislation does not promise a change in the hearts and minds of some of our fellow countrymen who are ignorant, misinformed, prejudiced or discriminatory in their beliefs and actions toward Americans of Japanese ancestry.

Our JACL efforts for statutory justice must be matched by a sustained, active and positive external relations program. If elected to the office of VP for Public Affairs, I pledge to do all that I can to help move our national organization in that direction.



• The incumbent for this position is **Kaz Mayeda**, member of Detroit Chapter since 1969. He spent the wartime years in Manzanar, served in the Army from 1948-50, and graduated from Univ. of Utah with a Ph.D. in genetics in 1961. Currently, he is a professor of genetics in the Dept. of Biology at Wayne State Univ. in Detroit.

He was chapter president in 1978 and 1984; chapter redress chair from 1978-84; and Midwest District Governor from 1979-80. In 1979, he was Detroit Chapter's JACLer of the year. In 1984, at the Honolulu convention, he was elected National VP for Public Affairs.

### Statement

The first term of any office is usually spent on one's "feeling his way around," to find where the skeletons are buried. And JACL is no different, not that I found any skeleton, mind you. I spent most of my time learning the inner workings of the national organization. I am seeking a second term for the same office to complete the task I set for myself when I ran for the first time.

The office of VP for Public Affairs monitors the external affairs of the national organization. Matters and committees relating to legislation, civil rights, public issues, media, and public relations are under the jurisdiction

of this office. I intend to make these responsibilities come to fruition.

Until the battle of redress is won, JACL must continue the fight. One of the reasons we were incarcerated was because we did not have friends to speak up for our dilemma in 1942. Had there been a VP for Public Affairs in those days, and had he/she been doing the job, perhaps we would not have had the concentration camp experience.

Now, we are in a position to rectify the atrocity. However, we cannot do it alone. We need the support of all the good people of this country. Thus, we need a strong VP for Public Affairs to build coalition support for our cause. I am confident that I can accomplish this task.

The future of JACL, a civil rights organization dedicated to the protection of the rights of Japanese Americans and promoting understanding between all social and ethnic groups in these United States through education and programs, must be in the mainstream of American life, dedicated to the welfare of all Americans. To this end, we must speak out wherever injustice is practiced. We must become confident in our rights as citizens and fully participate to build a "Greater America" for all the people.



• **Cherry Kinoshita** of Seattle spent the wartime years in Puyallup, Wash. and Minidoka, Idaho. She went on to attend Seattle Community College, Univ. of Minnesota, and Univ. of Washington, from which she was graduated *magna cum laude* in sociology.

She has been one of PNW's most effective fundraisers for redress, having raised over \$20,000 in preparation for the 1981 Commission hearings in Seattle. As an LEC prime solicitor, she has raised close to \$9,000 personally, and as keyperson for the Seattle area, over \$17,000 with four other solicitors.

In addition, her work on the state level has resulted in the following pieces of legislation:

(1) Washington State Employees Redress Bill—passed in May 1983, provided \$175,000 in redress payments to 35 former state employees who were fired in 1942.

(2) City of Seattle Employees Redress, passed in March 1984, provided \$5,000 each to three former city employees who were terminated in 1942.

(3) Seattle School District Redress, passed by the Seattle School Board in 1984. However, the funds were held in escrow until April 1986, when the State Legislature passed enabling legislation, resulting in payment of \$130,000 to 26 former school district employees.

Kinoshita is a founder of Washington Coalition for Redress and has been active in Asian Pacific Women's Caucus, Asian Americans for Political Action, Seattle Municipal League, Community Advisory & Resource Committee for Nisei Aging Project, and International District Economic

Assn.

She has served as co-vice chair of JACL-LEC (1985-86), PNW vice governor (1983-85), and chair of Nominations Committee (1980-82); has held numerous chapter offices; was the coordinator of the Seattle CWRIC hearings in 1981; and has been PNW Pacific Citizen representative for the last eight years.

Kinoshita was named JACLer of the Biennium (along with James Shimoura) at the 1984 Honolulu convention; is a recipient of the Minoru Masuda Memorial Community Service Award and the United Nations Assn. of USA Human Rights Award; was named by the Seattle Times as one of 13 "movers and shakers" of the Seattle Japanese American community in 1983; and was nominated by the Seattle Post Intelligencer for the Jefferson Award for Human Rights.

### Statement

For the past four bienniums redress has been the top priority issue of National JACL, and the National Council will again make its wishes known at the convention. Resolution of this issue is essential for all Americans who value their constitutional rights and privileges which underlie the strength of our democracy.

The hazard to this organization lies in the issue of redress weighing so heavily upon the resources of JACL that its effectiveness is impeded in other basic areas for which JACL was founded. We have worked long and hard for nearly 10 years, however, and we cannot at this critical point deviate from, or be divided by, our basic redress goals—particularly in these next two highly important years during which we must push for an expeditious and successful outcome with renewed vigor and redoubled effort, resolving at long last this significant issue. The victorious passage of redress legislation in the 1986-88 biennium will go down in JACL history as its proudest accomplishment in its 60 years of activism.

Whether this critical issue will be remembered to the credit of JACL, however, depends significantly on the direction and strength given by JACL in this next biennium. In my role as

LEC Vice Chair of Operations, I have diligently fostered a unifying effort for redress between JACL and LEC. As JACL VP for Public Affairs, I will see that this interrelationship is strengthened—for there is much work to be done and divisiveness will strangle the best of efforts.

Constituency support will be crucial. Coalition support must be vigorously sought as an extension of the established contacts with civil rights organizations, church affiliations, veterans' groups, and other ethnic associations. Expedient use of the political network must be made. Working hand in hand toward our common goals, I believe the ability to cement a unifying relationship internally, and a supportive working relationship externally, will be of essential importance in advancing the cause of redress and in fulfilling the responsibilities of this office.

Furthermore, JACL must meet the criticism of being a one-issue organization with aggressive development of relevant issues and long-range goals, strengthening its focus on those areas of fundamental concern—the unrelenting fight against racism in all its forms: economic backlash, racial violence, employment discrimination, and institutional racism. Alliances with pan-Asian groups, as well as with other ethnic minorities, must be intensified to increase our political clout in fighting restrictive and racist legislation and eliminating negative stereotypes.

As a Life Member with a 20-year record of active involvement and commitment, I will address policy decisions which confront the National JACL knowledgeably and responsibly, particularly from the perspective of a grass roots worker who has come from the ranks to take on leadership positions—being therefore aware of, and sensitive to, the wishes of the rank and file. As your representative I will bring to the National Board a deep concern and intense desire to promote internal organizational unity and to project for JACL a positive public image in order to better accomplish the goals which have given JACL its proud stature as the foremost Asian American civil rights organization in the nation.

TOYO  
Myatake

STUDIO

235 W. Fairview St.  
San Gabriel, CA 91776

(213) 283-5685 (818) 289-5674



# Raining on the Parade

FROM THE  
FRYING PAN:

Bill  
Hosokawa



It isn't good manners to throw rocks at a birthday party where everyone is having a grand time and the mood is exhilaratingly upbeat. So I hope you will understand when I point out, without rancor, a certain insensitivity in the New York celebration of the 100th birthday of Miss Liberty and the 210th birthday of the United States.

The celebration centered on the restoration of the Statue of Liberty, which welcomed millions of European immigrants. This is entirely proper since the vast majority of immigrants who populated and helped make our country what it is were Europeans who entered through the port of New York, and their first meaningful sight of their new lives was the Statue of Liberty.

But Europeans were not the only immigrants, and my com-

plaint is based on the perception that the others—notably the Blacks, the Hispanics and the Asians—were largely slighted in the effort to give the celebration a national dimension.

The Blacks arrived not in the shining light of the "lamp beside the golden door," but in chains in the holds of stinking slave ships. And as I wrote in the book *Nisei*: "There wasn't even a Statue of Liberty—nor has anyone ever seriously suggested there ought to be one—to hold aloft a lamp of hope for the benefit of Asian immigrants beside the Golden Gate or any other Pacific portal."

Regardless of the circumstances of their arrival, Blacks, Asians and others have contributed mightily to the progress and prosperity of the United States. They accomplished this in the face of not encouragement and welcome, but hostility and often violent opposition.

There were, to be sure, a few heartwarming gestures of recognition for Asians during the New York festivities. I.M. Pei, the architect, and An Wang, the computer whiz, both Chinese immigrants, were among those pre-

sented the prestigious Medal of Liberty. Hue Cao, an 11-year-old Vietnamese refugee now living in Hawaii, read her prize-winning essay about the meaning of freedom. And there were a few Asian faces visible in brief views of the newest naturalized Americans.

But for those who have been concerned with the equal sharing of constitutional rights, it was not a little disturbing that platitudes were voiced without recognition that liberty and justice were not served to all on a silver platter. There was struggle involved in the claiming of rights guaranteed by the nation's basic documents, as the Blacks know, and we Japanese Americans know.

Perhaps a celebration of the triumph of American democracy is not the time to wear a hair shirt confessing grievous faults, but unfortunately Liberty's birthday party also turned out to be a demonstration of the national willingness to sweep shortcomings under the rug.

It would have been more sensitive and inspiring if the nation, instead of spending so much time in self-congratulatory extolling of its virtues, had pledged to redouble its efforts to put into practice the high ideals that, too often, have been only paper pledges subject to the disgrace of bigotry.

## Hibakusha to meet in Chicago

CHICAGO—A group of Hiroshima and Nagasaki atomic bomb survivors (hibakusha) residing in the Chicago area will meet to discuss their health and welfare during the JACL National Convention on July 22, 7 p.m., at the Hyatt Regency.

Among the estimated 1,000 hibakusha living in the U.S., about 10 are known to be in the Chicago area. Although a team from the Hiroshima Prefectural Medical Assn. has come to the U.S. every other year since 1977 to conduct medical examinations of hibakusha, the tests are only available in San Francisco, Los Angeles, Seattle and Honolulu.

Local hibakusha, who lack easy access to these examinations or to current information, will be advised at the bilingual meeting on medical problems, medical treatment in Japan, and proposed legislation to benefit U.S. hibakusha.

The meeting will be conducted by Ken Nakano of Kirkland, Wash., and Dr. James Tsujimura of Portland, co-chairs of the National JACL Atomic Bomb Survivors Committee.

Nakano is a survivor of the Aug. 6, 1945 Hiroshima bombing. He was standing in an open field 1.1 miles from the epicenter and suffered burns on the left side of his body. He says that half of his elementary school classmates died on that day alone.

He is also national vice president of Committee of Atomic Bomb Survivors in the U.S., which has been seeking assistance from Congress for 500 to 700 Japanese Americans who survived the bombings and have since returned to the U.S. These survivors can easily lose their insurance coverage if it is learned they are hibakusha, thus making it financially impossible for them to receive adequate medical assistance for the long-term effects of radiation. Legislation introduced in the past has asked for funding to protect and supplement health and medical policies held by these U.S. citizens and permanent residents.

Tsujimura, a past National JACL president, has participated in the last three Japanese medical team examinations in Seattle.

## Letters

### A Pressing Need

I am just one of many members of National JACL who has never held a high position in our organization. Nor is it likely that I will ever become a National JACL officer.

However that may be, I write to take issue with the tenor of the article "Is There an Emergency?" by past National JACL president Roy Nishikawa (June 20 PC) in regard to the resolution, passed by both the LEC Board and the National Board, requesting an outright grant of up to \$200,000 from the National JACL Endowment Fund.

I do not mean to cast aspersions on either Mike Masaoka or Roy Nishikawa, who are the permanent members of the Endowment Fund Committee, nor do I doubt the integrity of the other three members of that committee.

But there are pertinent questions that must be asked regarding the intent, meaning and wording of the original charter which set up the Endowment Fund.

First, who has ever seen the original, written, authenticated device which created this fund? Second, if such a document exists, where is it? Third, if there is such a document, why has it never been made public?

Dr. Nishikawa quotes "in part" Sam Ishikawa's memorandum (all italics mine) that (1) "Any amount donated by the recipient of evacuation claims would remain forever in the JACL Endowment Fund"; (2) "The Principal of the Fund would never be touched by the JACL"; (3) "National emergency was understood to mean an emergency of the type we faced in 1942. This emergency was not meant to include financial difficulty...for projects, no matter how worthy they may be."

To me, Ishikawa's memorandum is just another memorandum. It does not purport to be the gospel truth, backed up by the original written word.

Then sometime in 1950-56, when Dr. Nishikawa was the National JACL treasurer, he, then-National JACL president George Inagaki and staffer Ishikawa went to the Bank of America to help draw up the original trust fund agreement for the Endowment Fund. Well, that's fine. So that means that there must be an

original document that established the Endowment Fund. I would like to see that document, and, I imagine, so would several thousand other JACLers.

Now, as to the real meat of this seeming disagreement as to how Dr. Nishikawa and the other Endowment Fund Committee members regard the word "emergency": it would appear that the Endowment Fund Committee believes that we (meaning JACL and the rest of the American Nikkei communities) would literally have to face the threat of another wholesale evacuation in order to expend all, or even a part of, the principal in the fund. Well, from my point of view, and to let it all hang out, that sort of thinking is just plain puerile unless the committee can prove, by the written document, that that is precisely what the original charter said.

Next, the part of Ishikawa's memorandum that says monies donated by recipients of the Evacuation Claims Act of 1948 would remain forever in the Endowment Fund is also subject to challenge. How long is forever? What if National JACL someday folds up its shop and ceases to exist? To belabor Ishikawa's memorandum further, even if there was another emergency of the type described by Dr. Nishikawa, the principal of the fund still could not be touched. Now, that's really double-speak, and I don't understand it. According to Nishikawa and Ishikawa, the Endowment Fund can only be used in an emergency—but even then, it cannot be used.

I claim that there is a whole lot that we do not know about the National JACL Endowment Fund; that too many of the restrictions on the usage of the principal depend substantially on the fallible memories of several old-timers.

I further claim that there is an emergency in terms of how National JACL and the National Council act on this and related resolutions, because this is the greatest issue confronting our body since the evacuation. And if we do not, or will not, accept that, then in my opinion, JACL is a pushover, and we are deservedly about ready to be relegated to the historical dustbin of dead (not lost) causes.

HOMER YASUI  
Portland

## The \$200,000 Question

by Thomas I. Hara  
Midwest District Governor

Having taken part in the unanimous vote of the National Board to endorse the \$200,000 grant application of the Legislative Education Committee (LEC), I read with interest the report on the June 9 meeting of the Endowment Fund Committee and the separate remarks of committee member Roy Nishikawa ("Is There an Emergency?" June 20 PC).

Because I agree that the resolution being forwarded to the National Council, to authorize disbursements from the principal of the endowment, will be the most controversial issue at our Chicago convention, I feel compelled to offer a different analysis to the delegates who will have to decide the question.

### To Fund or Not to Fund

From the LEC perspective, the issue is quite simple: is it to be assured of adequate funding with which to do its job in the 100th Congress? The emergency declaration being sought is predicated upon the realization that monetary redress under H.R. 442 and S. 1053 must happen, if at all, within the next two years.

Even the staunchest proponents of redress acknowledge that the Congress seated in January will be our last realistic hope. Federal deficit problems assertedly make compensation a difficult matter to vote for, and the underlying principle concededly lacks a sense of immediacy—for many, I suspect, relocation is an item of history, and best forgotten at that.

In this environment, redress lobbying can only be time-consuming and extraordinarily expensive. LEC proposes 3-year fund-raising of about \$550,000 and seeks to fund its immediate cash flow with up to \$200,000 from the endowment on an as needed basis.

For JACL as a whole, the issue is much more complex. For better or worse, redress has become such an integral focus of the organization that it may well be less important that we ultimately prevail than that we are per-

ceived to have exerted ourselves to the utmost in time and treasure on its behalf, win or lose.

Since the Salt Lake City convention we have spent almost \$800,000 through our National Committee for Redress and LEC; we have expended uncounted volunteer hours and out-of-pocket expense; and, significantly, we have exposed the Nikkei legislators to substantial political risk by seeking their assistance in Washington.

### Narrowing 'Window'

If, with our rapidly narrowing "window of opportunity," we are unable to guarantee our final commitment at this last practicable moment, it must be more than possible that the damage to our institutional credibility will be irreparable.

This is the real risk to the "long-term integrity of JACL": that our unwillingness to thoroughly execute the most momentous project undertaken will mark us in the future as a paper tiger, both among our membership and within the greater community.

It is not my intention to denigrate the action of the Endowment Fund Committee, which has a legitimate consultative role on this question. In particular, I recognize and empathize with Dr. Nishikawa's ethical dilemma as a past solicitor of the fund. Nevertheless, I submit that as a legal matter the committee's fiduciary reservations are misplaced. Absent a contrary position in the trust indenture, our by-laws are quite clear: the fiduciary obligation of the Endowment Fund Committee runs in favor of JACL and not to the Endowment Fund subscribers of 30 years ago. The ethical dilemma faced by Dr. Nishikawa and other past endowment solicitors is personal to them. While I do not doubt the emotional content, analytically it is irrelevant to the Chicago debate.

### JACL's Finances

The decision will not be any easier from a financial standpoint. National Council delegates must be under no illusion that their votes in Chicago—for or against a grant, for or against

pledges to repay another "loan"—will improve JACL's financial position one whit. The voting will only determine how large and how fast the dues increase must come.

If the grant resolution passes, we will have to deal with the permanent loss of investment income from endowment principal disbursed. If it fails and we are remitted to continued "loans," then fund transfers to LEC (currently \$10,000 monthly) can only be made by "bleeding" the rest of an already stretched budget.

LEC is understandably put out with the intimation that it is the source of the budget problem when it is, in fact, an instrument of JACL (separate for tax reasons) for purposes of the redress lobbying push. But the fact remains that the redress issue which necessitates LEC is causing us an enormous economic problem. For too long the National Board has tried to deal with this as a simple timing problem. Unfortunately, the deferral is realistically limited by our congressional opportunity.

### Question of Commitment

So in the final analysis, the issue is not one of economics, whether short-term or long; when the delegates get to the biennial budget, they will see that we lose that one regardless of this vote. Nor is it an issue of fiduciary responsibility, though one might question the prudence of a "loan" to a borrower which has repaid prior loans out of subsequent borrowings and proposes to repay another one from a pledge system that is demonstrably in arrears and from the final net balance of a solicitation which barely hit 50% of its first year target figure.

And it is not an issue which will be solved by another resolution declaring redress to be the first priority of the organization without addressing its financial dimension.

The issue is redress: what level of faith and commitment does the National Council have to see the current bills through the 100th Congress? This is probably the last opportunity for the National Council to deliberate and be heard as a body. I trust the delegates will come to Chicago prepared to do so.



**CHIYO'S**

Japanese Bunka Needlecraft  
Framing, Bunka Kits, Lessons, Gifts  
(714) 995-2432  
2943 W. Ball Rd., Anaheim, CA 92804  
(213) 617-0106  
424 E. 2nd St., Honda Plaza, L.A. 90012

**EARN 15.1%**

1st Trust Deed secured by income property. No loads, no commissions, no gimmicks. Invest as little as \$5000.  
Call for complete information.

(213) 477-2668

**ARIGATO BAZAAR**

By Centenary United Methodist Church

Saturday, July 19th, 11 a.m. - 7 p.m.

at Maryknoll Japanese Catholic Center  
222 S. Hewitt St. (two blocks East of Alameda St.)Food, Games, Merchandise, Live Plants  
Donation \$1.00/ticket - redeemable

**"CHARLES HEIDSIECK" MAXI FOILER—TRIMARAN OCEANIC  
TO BE SOLD BY AUCTION ON JULY 20, 1986  
AT LA TRINITE SUR MER, FRANCE**

10 sails, equal length and width at 25.90 meters. Built in 1984, equipped with a Crossarm in the form of a Delta Wing extending to the edge of the small floaters to which started foils are attached (for balance). A supporting surface is placed in the form of an inverted "T" on the main hull which was especially developed. Designed by Giles Vaton—Construct. Multiplast. For more information please contact the auctioneer:

Mr. Gridel

15 Rue de la Grange Bateliere, 75009 Paris (France)  
Tel: (1) 47.70.87.29 Tlx: 643 005F.

## INTERNATIONAL POSITIONS

Climate Control Division, a leader in providing air conditioning and heater systems, radiators and other technically advanced heat exchangers has opportunities for Product Design Engineers and Manufacturing Engineers for expanding Far East Automotive Operations.

Selected Product Design Engineers will create design specifications, formulate conclusions and work with various engineering and manufacturing activities in the following areas:

- Air conditioning compressor/clutch design
- Condenser/evaporator design
- Injection mold plastic components design
- Refrigerant system control design
- A/C and heater systems mechanical and electrical control design

Manufacturing Engineers will participate in special studies, process development, equipment and tool design, project management, procurement and launch support for new products. Manufacturing processes include:

- Component assembly
- Injection molding
- Machining
- Brazing (vacuum and flux)
- Foam-in-place gasketing
- Soldering
- Stamping
- Forming
- Painting and decorating

All positions require at least a BSME degree. A focus on electrical and electronic courses will be beneficial in the manufacturing engineering environment. Ability to speak Japanese or Korean is a prerequisite for all of these positions.

Send resume to:



Attn: Salaried Personnel  
Climate Control Division  
P.O. Box 705 • Plymouth, Michigan 48170

By choice, we are an Equal Opportunity/Affirmative Action Employer

# CLASSIFIED ADS

**4—Business Opportunities****B.C. CANADA**

By retiring owner due to health. FISHING RESORT, by owner deeded land, school bus, 2 residences, 9 cabins fully equip'd. Excellent clientele. Just reduced to \$179,500 Cdn Funds. Local managers available. Wildwood Fishing Resort, Loon Lake Rd. RR #1, Cache Creek, B.C., Canada V0K 1H0  
(604) 459-2534.

**RESTAURANT IN WESTWOOD**

Beer/wine license.  
Excellent location, good parking  
\$105K  
(818) 762-0144 pp

**COLORADO**

Fully equipped & stocked cafe & bar. Est. in '78. Good Elk/Deer hunting area.  
50 miles from Telluride. (303) 865-2607

**MINER'S INN  
PO Box 424 Naturita, CO 81422**

**CALIF**

FAST FOOD Restaurant. Corner location. Parking lot, good lease.  
\$70,000 or best offer.  
Bring best offer. Principals only.  
(415) 821-1929

**WASHINGTON**

RESTAURANT w/2 LOUNGES, 2 kitchens & banquet facility located on navigable in-land waterway. Property, building & equipment located on US 101. Terms negotiable.

Owner (206) 532-0126

**SO CALIF**

DRY CLEANING PLANT Good location in Encino area. Plenty of parking; established 3 years. Low rent. \$30,000 gross per month. New equipment; in shopping center with excellent clientele. For sale by owner, serious inquiries only. Flexible terms. (213) 827-3097

FAST FOOD Xint Family Operation. Developers of fast food plazas with common feeding and patio area, has opportunities for experienced operator of oriental deli, chicken or Mexican food. Developers Bob or Mike. (213) 390-3930 (213) 390-7064.

**LOBSTER HOLDING AND  
DISTRIB. FACILITY**

Located in San Francisco, CA  
For Sale by owner. Great Potential.

Inquire (713) 977-8268

**MONTANA**

**BANK LIQUIDATION  
22 Unit Motel**

Located in a beautiful valley in the heart of Montana's greatest recreation area. Excellent fishing, hunting, skiing, and natural hot mineral springs. 150 miles north of Yellowstone Park. Property also has living quarters, one trailer space; located on 19 city lots. Price includes all furnishings and a phone system. Ideal for a retired couple. CASH FLOWS. \$175,000.  
TERMS Available. Contact Mike Grove  
First National Bank, P.O. Box 709  
White Sulphur Springs, MT 59645  
(406) 547-3331.

**SO CALIF****METAL PLATING**

Chrome, nickel, cadmium & zinc. Established 27 years. Gross \$200,000 yearly. Call or write: 1901 1/2 San Fernando Rd., Los Angeles, CA 90065  
(213) 221-3666

**5—Employment****Project Coordinator**

Administer the use of the Old Union Church. Good writing and speaking abilities. Submit resume to:  
East West Players, 4424 Santa Monica Blvd., L.A., CA 90029.  
No phone calls.

**LVN/RN  
GENERAL OFFICE HELP**

Speaking English & Japanese for pediatric office. Near Hollywood. Full time.

Call (213) 660-5050

**MARKETING  
ARE YOU OVERWORKED  
OR UNDERPAID?**

Come see me, Dave, and I'll cure your problems. Set appointments for high, high commission plus bonuses. Weekly salary paid against commissions.  
Must be bi-lingual.

(818) 708-5800  
EOE

**GENERAL OFFICE  
ATTENTION  
WANTED IMMEDIATELY**

Must have outstanding personality. Positive mental attitude. If qualified FIRST AMERICAN TRAVEL NOW HIRING

- Full-Part Time available
- New fast growing company
- Opportunity for advancement
- Outstanding salary bonuses

TELE-MARKETING—Must be bi-lingual. Now hiring, high pay with part-time hours. No experience necessary. Will train.  
Call Ron. (818) 708-5800  
EOE.

Nursing-Director of Nursing-Assistant Director of Nursing-Staff Nurses

20 bed rural JCAH hospital in So. Central Utah. Progressive health care system. Excellent working environment. Inquire or apply: Wayne Ross, Administrator, Garfield Memorial Hospital, P.O. Box 389, Panguitch, UT 84759, (801) 676-8811. Equal Opportunity Employer.

**\* PSYCHOLOGIST \***

Forensic Evaluations—due to passage of SB1296 the State Department of Mental Health is seeking psychiatrists & licensed psychologists with at least 5 years experience in the diagnosis & treatment of mental disorders. The evaluations will be performed beginning 7/1/86 on mentally disordered offenders deemed suitable for treatment in the mental health system as a condition of their parole. Full time or half time positions are available.

**TRAINING COORDINATOR**

need to administer statewide training of staff for a newly mandated forensic mental health treatment program. Position requires skills & needs assessment, clinical management & training ability as well as a familiarity with the penal code judicial commitment procedure treatment facilities & program. Clinical experience necessary. Interested professionals should submit resume to:

Department of Mental Health  
Forensic Services Branch  
1600 9th Street, Room 101  
Sacramento, CA 95814  
(916) 322-0268  
EOE

Engineer, Civil Engineer, Join established, hardworking, consulting eng'r firm that really cares about its employees & clients. Project Engr. BSCE, EIT: 2 years design of municipal, subdivision & industrial site improvement plans. Send resume & salary history to: Penfield & Smith Engineers, P.O. Box 98, Santa Barbara, CA 93102.  
Attn: C.E. Watson, (805) 963-9532.

**9—Real Estate**

RE/MAX Forest City Realty  
334 Wellington Rd. S.  
London, Ontario, Canada N6C 4P6  
**International Brokers**  
(519) 679-2000.

**5,800 LAYERS:** 25 acres, modern home, good barn, all in excellent condition.  
**16,200 LAYERS:** 77 acres, new home, picture perfect property.  
**9,600 LAYERS:** Plus 13,000 Broilers. 30 acres, 2 homes, owner retiring. Good potential.  
**4,200 LAYERS:** 250 acre, good setup  
**10,000 BROILER BREEDERS:** 50 acres, good barn. A real money maker.  
**17,000 BROILERS:** Good land base, may sever. Buyers looking for all sizes of Broiler. Layer, Pullet Turkey Farms. Call for a confidential interview, Tom McGee, Associate Broker, (519) 679-2000.

**ILLINOIS****GOVERNMENT HOMES**

From \$1. You repair. Also delinquent tax property and foreclosure lists.

For information, call refundable  
(312) 888-0123, Ext. H-294

**CANADA**

Remarkable Recreation. 10 acres, 1000' lakefront. Prime hunting and fishing. Spacious lodge, 2 bedroom cottage. Four motel type guest units. All modern. Priced at \$150,000 U.S. Funds. Cash preferred. By owner. Sally Poole. Nimpo Lake, B.C. Canada VOL 1RO (604) 742-3389

**11—Travel****BEAR HUNTER'S DREAM**

Phil Coop's opening a whole new area in northern Saskatchewan where there are 8 ft + Black and Brown Bear. 20' + skulls in a two tag limit going for 100% success. Offering two types of hunts • a guaranteed shot and number one hunt. Spring season. Also still operating my number one hunt in Ontario where I took several record class Black Bear this past season. Spring & Fall season. Phil Coop's Black Bear Camps, Dec.-March. General Delivery, St. Cloud, FL 32769. Apr.-Nov. Box 106, Dwight Ont., Can. POA 1H0 (705) 635-1552 or (305) 892-7224.

**QUEBEC CANADA**

**MAY 1 WHITEFISH LODGE OCT 1**  
On famous Whitefish Lake, Quebec, unexcelled lake trout, bass, pike and walleye fishing. 17 lakes to choose from. 15 large cabins with hot water and modern convenience. Excellent food, experienced guides, outdoor motor available. Rates \$220 Can. per week per person includes cottage, board, maid service. Family rates on request. Located 65 mi. N of Ottawa. Write for free folder. Also famous for Deer & Bear hunting with our Bear guides Jacques Menard & Gerald Thérien. Serge Lafreiere, Whitefish Lodge, Gracefield, Que. Canada J0X Ph. (819) 463-2629.

**ALBERTA CANADA**

Attn Sportsmen, 10 day Moose Hunt. (Dry Camp) \$1,850 U.S. per person.  
Dallas DeWitt, Box 144  
Wildwood, Alberta T0E 2M0.  
(403) 325-2048.

**LONDON ENGLAND**

2 Room Apt to Let. Furnished 1 bdrm apt. equipped with twin beds. Partial central heating, hot water, new WW carpet + usual kitchen appliances. There is an elevator and large communal garden. The flat is located within EZ walking distance from Wimbledon Station in SW London. 40 min from city & Westend. Shops & Recreational Facilities nearby. Rent 400 pounds sterling per mo. + utilities. One year lease preferred. For details Call (604) 222-4748.

Remember: All articles and letters to the editor should be typed or computer printed, double-spaced.

## Kubota Nikkei Mortuary



(Formerly Shimatsu, Ogata & Kubota Mortuary)

911 Venice Blvd.  
Los Angeles, CA 90015  
(213) 749-1449

R. Hayamizu, President; H. Suzuki, VP/Gen. Mgr.; Y. Kubota, Advisor.

Serving the Community  
for Over 30 Years

Tell Them You Saw It  
In the Pacific Citizen

Four Generations  
of Experience

## FUKUI MORTUARY Inc.

707 E. Temple St.  
Los Angeles, CA 90012  
626-0441

Gerald Fukui, President  
Yuth Fukui, Vice President  
Obuo Osumi, Counsellor

## 1986 West L.A. JACL Travel Program

FOR JACL MEMBERS, FAMILY & FRIENDS  
1986 Airfare LAX-TYO-LAX — \$563 (after July 11)

(July 6 Update)	Tour Dates
12b: NEW—Festival in Japan	Aug 1-14
12d: NEW—Canadian Rockies-EXPO 86	Sep 8-19
14a: NEW—Australia-New Zealand-Fiji	Sep 7-23
14b: NEW—Niagara Falls, Canada, New England Fall Foliage	Sep 13-26
15: Hokkaido/Kyushu-Honshu Tour	Sep 26-Oct 18
16: Fall Foliage-2 Nations, Niagara Falls	(Sold Out)
16a: Japan Omote Tour	Oct 3-20
17: Japan Fall Foliage Tour	Oct 18-Nov 1
18: China Tour	Nov 1-13
19: South America Tour	Nov 8-22
20: Japan Highlights Tour	Dec 20-Jan 3

**WATCH FOR 1987 TOUR PROGRAMS**

**TOUR/FLIGHT MEETING:** Every third Sunday of the month from 1 p.m. at Felicia Mahood Recreation Hall, 11338 Santa Monica Blvd., West Los Angeles (west of the San Diego Freeway).

- July 20: Showing of Fall Foliage slides and film on Hokkaido.
- Aug 17: Showing film on Australia, New Zealand and Fiji.

For information and brochures, contact:

**WEST L.A. JACL TRAVEL**

12008 Ohio Ave., Los Angeles, CA 90025 • (213) 820-5250, 820-3451 (day), 826-9448 (eve)

**Hokkaido/Kyushu-Honshu**

Sep 26-Oct 18  
Tour A: Sapporo, Lake Toya, Noboribetsu, Shiraoi Aino Village, Chitose; Fukuoka, Beppu, Mt. Aso, Kumamoto, Matsushima, Shimabara, Unzen, Nagasaki, Hiroshima. Land tour: ¥250,000 (dbl occ) plus airfare. Tour escort: Bill Sakurai.

Tour B: Hiroshima, Inland Sea, Kyoto, Takarazuka Excursion, Nara, Gifu, Nagoya, Shuzenji Spa, Atami, Hakone, Lake Kawaguchi, Mt. Fuji, Tokyo. Land tour: ¥199,000 (dbl occ). Tour escort: Bill Sakurai.

**Japan Omote Tour**

Oct 3-20  
Tour #1: Tokyo, Nikko Excursion, Kamakura, Hakone, Atami, Nagoya, Toya, Kashikojima, Nara, Kyoto, Hiroshima (11 days). Land tour: ¥251,000 (dbl occ), plus airfare. Tour escort: Steve Yagi.

Kyushu Extension: Hiroshima, Fukuoka, Beppu, Mt. Aso, Kumamoto, Amakusa, Unzen, Nagasaki, Fukuoka, Osaka, Tokyo. Land tour: ¥171,000 (dbl occ). Tour escort: Steve Yagi.

**Tohoku Fall Foliage**

Oct 18-Nov 1  
Visit Tokyo, Asamushi Spa, Lake Towada, Ohdate, Lake Tazawa, Tamagawa Spa, Hachimantai, Morioka, Hiraizumi, Sendai, Matsushima Excursion, Togata, Zao, Yamagata, Yonezawa, Iizuka Spa, Bandai Plateau, Higashiyama Spa, Koriyama, Utsunomiya, Nikko, Tokyo. Land tour: ¥360,000 (dbl occ), plus airfare. Tour escort: Toy Kanegai.

**China Tour**

12 day Nov 1-13  
Visit (via Narita) Shanghai, Nanjing, 3 days in Beijing, Great Wall excursion, 2 days in Guilin and cruise down River Li, Guangzhou, 2 nights in Hong Kong. Land tour: \$1,225 (dbl occ), \$1,030 RT airfare. Tour escort: Toy Kanegai.



# OCHI

Continued from page 4

Q: What can we do to attract new members?

A: New membership has increased substantially during the last biennium—a reversal of a history of decline. The reasons for the increase include: several national membership initiatives; expansion of benefits and insurance offerings; providing a host of activities that have attracted the interest of diverse segments of the JA community. The SRS direct mail solicitation to garner support for redress and gain new members has a real potential to significantly boost our ranks. Based on current yields for the pilot roll-out, the indications are that a complete blanketing of the national list would add to our numbers considerably.

Q: What needs to be done with the youth, women and elderly programs?

A: It is worthy to help our youth understand their heritage and the sacrifices of the past. In order to help them fully participate in the future, programs to aid their development and advancement, scholarships, forensic contests and leadership training must be provided.

# KAJIHARA

Continued from Page 4

Q: What should JACL's role be with anti-Asian sentiment and violence?

A: JACL should be actively involved in combating anti-Asian violence and anti-Asian sentiment.

Q: What do you think JACL's U.S.-Japan relations policy should be?

A: JACL's policy must be clearly understood and supported by the totality of JACL. JACL must conduct an extensive in-house education on U.S.-Japan relations and what the content of the involvement should be. From this educational process, goals and objectives which are fully understood and supported by the totality of JACL must be developed. Then JACL can proceed. Possibly the program needs broadening to U.S.-Pacific Rim Nations Relationships.

Q: What can we do to attract new members?

A: This is a very difficult question. I believe a comprehensive membership enhancement plan must be developed. I plan to work very closely with the VP of Membership to forge this plan. I believe JACL needs the active involvement of the National Board members and other JACL leaders to work on membership recruitment.

Philosophically, to increase membership, JACL must be the kind of organization that people want to be affiliated with. I believe communication with the constituents is very important. One way is to write articles in the PC regularly and frequently. The National President should take the lead. National officers should also write.

I believe accountability to the members is crucial. If grassroots JACLers see that the National Board, led by the National President, is exerting its total energies working toward the betterment of JACL, there will be overwhelming support by the constituent JACLers. They will be energized and motivated to work harder, recruit members, sponsor projects and programs that will attract new members and retain current ones.

Q: What needs to be done with the youth, women and elderly programs?

A: Projects and programs that interest and serve the needs of

Continued on Back Page

The Women's Concerns Committee has made many gains in bringing women to full active participation at all levels in our organization. Other accomplishments include sensitizing policymakers about the problem of mail-order brides. I believe that the important work must be continued.

There are special problems facing the first generation to be born, raised, and grow old in America. They present new challenges to our families and com-

munity. Efforts to obtain additional financial support to provide services for our elderly should be sought. And very importantly, the JA story—how Issei and Nisei have contributed to making America a better place—needs to be told to our young people to instill a sense of pride and to society as a whole.

Attention must also be given to new emerging needs—biracial marriages and children and the implications for ethnic identity and cultural heritage.

## 1986 OUR ESCORTED TOURS

EXCEPTIONAL FEATURES—QUALITY VALUE TOURS

Canadian Rockies-Victoria-Expo	
Vancouver (9 days)	June 19
Japan Summer Adventure	July 5
Hokkaido-Tohoku Adventure	Sept. 27
East Coast/Foliage (10 days)	Oct. 6
Japan Autumn Adventure	Oct. 13
New Zealand-Australia	Oct. 31

For full information/brochure



**TANAKA TRAVEL SERVICE** (415) 474-3900  
441 O'Farrell St., San Francisco, CA 94102

## SFO or LAX -to- TOKYO Round trip \$519\*

JAPAN RAIL PASS . . . .

Hotel/Ryokan Reservation \$30 per night . . .

\* Rates from Other Cities available

(415) 653-0990

**COMMUNITY TRAVEL SERVICE**  
5237 College Ave., Oakland, CA 94618

## Root for the U.S. Sansei athletes competing for the first time in Mexico City

August 5 - 10, Japanese Mexican Lyceo Comercial, Mexico City

(Site of the 1st PANA Convention, 1981)

TRAVEL ARRANGEMENTS: West L.A. Travel, George Kanegai (213) 820-3592. Stay 3 nights Sheraton Maria Isabel Hotel (Aug 8-10) \$99 p/prsn/twin. Sign up today! \$241 r.t. air (WA) until July 5 TEAM Entry Information: Carrie Okamura (714) 894-9092 • DONATIONS for U.S. Team uniforms (35 on team) sought via "PSWDC-JACL", 244 S. San Pedro St., Los Angeles, CA 90012 • HOME SPONSORS in L.A. area needed in spirit of Nikkei friendship to invite house Latin American Nikkei athletes after the Mexico meet during Nisei Week Festival (Aug. 10-16). Call: Luis Yamakawa (213) 737-5398.

**Root!**

## 1986 KOKUSAI TOURS

SEP 25 - Tohoku & Hokkaido—Fall Foliage—15 days—\$2,495
OCT 02 - Hong Kong, Okinawa, Kyushu & Shikoku—15 days—\$2,495.
OCT 18 - Uranihon - the Otherside of Japan—15 Days—\$2,395
NOV 04 - Japan Odyssey - Fall Foliage—15 Days—\$2,295
NOV 17 - Orient Odyssey - Tokyo, Seoul, Singapore, Bali, Bangkok & Hong Kong—17 Days—\$2,495

### "1987 NISEI VETS SUPER TOUR"

Visiting—Seoul, Taipei, Tohoku & Hokkaido

SEP 27 - 17 days - Most Meals - \$2195

All tours include, flights, transfers, portorage, hotels, most meals, sightseeing, tips & taxes and touring transportation.

### KOKUSAI INTERNATIONAL TRAVEL

400 E. 2nd St., Los Angeles, CA. 90012  
213/626-5284

## JACL Chapter-Sponsored Group Medical Insurance

Endorsed by

**Pacific Southwest District JACL**

CHAPTER SPONSORED INSURANCE BROKERS

LOS ANGELES (213)

Masaru Kagawa . . .624-0758	Saburo Shimada . . .820-4638
Kamiya Ins. Agcy . . .626-8135	Paul Tsuneishi . . .628-1365
Art Nishisaka . . . . .321-4779	Yamato Ins. Sv. . . . .624-9516

ORANGE COUNTY (714)

Ken Ige . . . . .943-3354	James Seippe . . . . .527-5947
Maeda-Mizuno Inc. 964-7227	Ken Uyesugi . . . . .540-3770
Agcy. . . . .or 283-1233	

EAST LOS ANGELES/MONTEREY PARK (213)

Takuo Endo . . . . .265-0724	Robert Oshita . . . . .283-0337
Ogino-Aizumi . . . . .571-6911	George Yamate . . . . .386-1600
Ins. Agcy. . . . .or 283-1233	

GARDENA VALLEY (213)

Jeff K. Ogata . . . . .329-8542	Seichi Sugino . . . . .538-5808
Stuart Tsujimoto . . .772-6529	George J. Ono . . . . .324-4811

WEST LOS ANGELES (213)

Arnold Maeda, CLU . . .398-5157	Steve Nakaji . . . . .391-5931
DOWNEY: Ken Uyetake . . . . .(213) 773-2858	
SAN DIEGO: Ben Honda . . . . .(619) 277-8082	
SAN FERNANDO VLY: Hiroshi Shimizu, CLU . . . . .(818) 363-2458	

Open to anyone, citizen or non-citizen, who becomes a member of the JACL

Q: What are your strengths in managing people?

A: A review of my vita shows a long record of commitment to the pursuit of justice and betterment of society. My educational and employment experiences and

civic and community activities have provided me with the knowledge, skill and abilities I would bring to the office of President.

As an attorney, I have been involved in law reform litigation

Continued on Back Page



## Japanese American Travel Club

ENDORSED BY THE NATIONAL JACL

250 E. 1st St., Los Angeles, CA 90012; (213) 624-1543

Toll Free: (800) 421-0212 outside CA  
(800) 327-6471 in CA

Office Hours:  
M-F 9-4; Sat 9-2

\*\$5 to be added to the price as "Return U.S. Tax"

**Waikiki Holiday** Tu-Wed dps only \$369  
Includes R/T by wide body jet btwn LAX-Honolulu; 8 days, 7 nights accom in a Waikiki Beach hotel, transfers, baggage, tips, flower lei greeting, color memory album.

**7 Nights Oahu & 1 Neighbor Island** \$649, p/person/twin (or)  
**Oahu & 2 Neighbor Islands** \$709 p/person/twin  
Departures from L.A., San Francisco or Seattle. Other Departure Dates slightly higher.

**Come & Join Paul Bannai Down Under** 15 days ★ Sep 13  
New Zealand and Australia tour, including 5 days of golfing (3 in NZ, 2 in Australia). Visiting Auckland, Rotorua, Te Anau, Queenstown, Christchurch, Melbourne, Sydney. Price from LAX for land & air: \$2,649 p/prsn/twin for golfers. Non-golfers deduct \$174 from above price.

**See Aloha Week/Golf with Sami** 8 days Sept 24  
Special departure for Ladies Golf enthusiasts: 2 nights Turtle Bay Resort w/1-day golf; 5 nights Ala Moana Hotel w/2 days golf; 2 dnrs, 2 lunches, 1-day sight-seeing of Oahu. \$860 p/prsn/twin includes RT air from LAX and all transfers in Hawaii.

**Fall Foliage—Historic American Heritage** 15 days Sept 24  
Group departs from LAX: Visit Niagara Falls, Vermont, Boston, New York, Philadelphia, Washington, DC, & colonial Williamsburg. 14 meals / \$1,549 p/person/twin plus airfare from hometown cities. Limited to 20 members.

**Paul Bannai Will Conduct** 15 days ★ Oct 4  
Asian Charms tour with 8 days of golfing (2 each in Manila, Singapore, Bangkok and Hong Kong). Visiting same cities. Price from LAX for land & air: \$2,595 p/prsn/twin for golfers. Non-golfers deduct \$500 from above price.

**Golden Tour of Japan** 11 days ★ Sep 19, Oct 17

Group departs from West Coast: Tokyo, Nikko, Kamakura, Hakone, Ise Shima, Kyoto, Nara. 18 meals / from \$2,514 p/person/twin.

**Niagara Falls & Ontario, Canada** 7 days until Oct 3  
Departs from N.Y.: Adirondack Mountains, Ottawa Parliament, 1000 Island cruise, Ontario Place, Corning Glass Museum, return to N.Y. 14 meals / \$655 p/person/twin plus airfare from hometown cities.

**Fall Foliage—New England, Canada** 7 days until Oct 6  
Sat & Wed departures from N.Y.: Tour scenic New England, Quebec, Montreal, historic towns of Vermont, Massachusetts with visits to Shelbourne, Bennington & Williamstown. 14 meals / \$699 p/person/twin plus airfare from hometown cities.

**Canadian Rockies** 7 days Sept to mid-Oct  
Depart on odd dates from Calgary: Visit Yoho, Banff, Jasper Nat'l Park, Moraine Lake, Kicking Horse Pass, Lake Louise, Athabasca Glacier, Sulphur Mtn gondola ride. 16 meals / \$789 p/person/twin plus airfare from hometown cities.

**Japan & Hong Kong** 15 days ★ Nov 1  
Group departs from West Coast: Tokyo, Kamakura, Hakone, Nara, Kyoto, & Hong Kong. 23 meals / from \$2,676 p/person/twin.

**Classic South American Tour** 19 days ★ Nov 5  
Special Itinerary, Alyce S. Komoto escort: Visiting Lima, Cuzco, Machu Picchu, Santiago, Buenos Aires, Iguassu Falls, Sao Paulo, Rio de Janeiro, Brasilia, Manaus and the Amazon. 27 meals, deluxe & 1st class hotels / \$2,974 p/person/twin.

**Orient Highlights** 16 days ★ Oct 18, Nov 8  
Group departs from West Coast: Tokyo, Kamakura, Hakone, Nara, Kyoto, Bangkok, Singapore & Hong Kong. 24 meals / from \$2,949 p/person/twin.

**1986 Christmas Shopping/JATC Tour** 9 days ★ until Dec 13  
3 nights Seoul Plaza Hotel, 4 nights New Kowloon Hotel, escorted to fabulous to fabulous shopping bargain area in Seoul & Hong Kong; 1/2-day guided tour in each city includes airport/hotel transfers, RT air from West Coast gateway city. Priced: \$999 p/prsn/twin plus \$3 US departure tax. Extra cost for weekend and seasonal air surcharges.

**New Zealand, Australia, Pacific Escape** 15 days ★ Nov 29  
Sat departures (till Dec 27) from LAX: Visit Auckland, Queenstown, Christchurch, Melbourne, Sydney, Waitomo Glow Worm Caves, Rotorua, Milford Sound & Waratah Koala Park. 24 meals / low season from \$2,647 p/person/twin.

**Caribbean Cruise** 7 days until Dec 13  
Saturday sailings each week year round. Free overnight accom at Ft Lauderdale for Friday arrivals with FREE RT AIR from West Coast gateway city; ports of call: St Thomas, St Croix, U.S. Virgin Islands, Nassau Bahamas and Ft Lauderdale/Florida. SPECIAL: \$945 dbl occup, inside 2 lower beds.

**Hong Kong Bargain** 8 days ★ Year round  
Mon-Thu departures: 6 nights at the luxury accommodations New Kowloon Hotel; 1/2-day sightseeing of Hong Kong, plus airport/hotel transfers including RT air from West Coast gateway city. \$899 p/prsn/twin plus \$3 departure tax. Extra cost for weekend & seasonal air surcharges.

**Loredo/Baja Fishing** 4 days ★ Tue/Wed  
Weekly departures, 3 nights at El Presidente Hotel, hotel tax, transfers, Airport/Hotel, RT air from LAX, one-day fishing on skiff, Total Price: \$295

• Prices subject to change without notice due to currency adjustments. Departure dates may be adjusted when conditions warrant it. All groups consisting of 15 or more tour members will be escorted by a Tour Escort from Los Angeles.

Or Contact Your JATC Participating Agent (Partial List)

Ben Honda . . . . .	(619) 278-4572: San Diego, CA
Dil Miyasato . . . . .	(213) 374-9621: Redondo Beach, CA
Gordon Kobayashi . . . . .	(408) 724-3709: Watsonville, CA

## Special Holiday in Japan

ANYWHERE, ANYTIME — 9 DAYS

**Features: (1) Air Fare, (2) 7-Nights Top Value Hotel** throughout Japan, including all taxes & service charge, (3) Unlimited Train Pass (includes Express Train, Shin-Kansen.)

### SPECIAL PRICE

From Los Angeles, San Francisco . . . . . \$ 898.00  
and special rate from any U.S. city is available.

The prices shown above are per person based on double occupancy.

## Japan Holiday Tour

(213) 484-6422



## OCHI

Continued from previous page

and legislative advocacy. I was co-counsel in the landmark Serano suit, and I have secured passage of measures which I drafted. My approach to changing public policy is proactive, and I would bring this same head-on approach to matters before us.

As the director of a City of Los Angeles office, I serve as a high-level executive with experience in planning, budgets, program development and implementation, and personnel management.

Also, I am responsible for administrative and legislative policy development. I have represented the city before local, state and federal bodies. I understand government and politics and how to get things done in that area.

As an advocate for Asian American interests, I have served on many governing, policy and advisory bodies, from presidential commissions, alongside Cabinet members and congressional Judiciary Committee leaders; to the L.A. County Board of Trustees, on which I was the first JA; to the vice-chairmanship of a Dept. of Justice Advisory Committee to the Attorney General; to numerous organizations over the years

as a pro bono counsel.

In my many activities, I have been praised for being a forceful and effective advocate; even my adversaries would have to admit my style with people is always professional and civil. My colleagues consider my interpersonal skills excellent.

**Q: What are your strengths in leadership style?**

**A:** My leadership style is characterized by a hands-on and goal-oriented approach. As President, I would be open and accessible. I would be independent, not beholden to anyone. I have a reputation for integrity and fairness in my dealings. I am also known as a problem-solver who has the ability to balance competing interests and work constructively to the common good.

**Q: How do you view the communication, cooperation and relationship between the National Board (officers and governors), National staff and general membership? What would you do to improve or change line of communication and command?**

**A:** The communications from National to membership has improved greatly during the last biennium. I would explore additional means to facilitate communications via PC, and an annual report to the membership. There is a need to reassess lines of communication and relationships as they relate to volunteer activity support, staff evaluation and cooperation generally. At times, certain issues have unnecessarily polarized the Board. The importance of not personalizing our differences and the need to talk through our concerns in a rational, responsible and amicable manner, for the good of the order, must be reinforced.

## KAJIHARA

Continued from Previous Page

youth, women and elderly will attract these groups to join. There are things that can be done at the national level to help the districts and chapters, I am sure. But membership increase mainly remains at the chapter level. Each chapter must actively recruit members by developing interesting and innovative programs that attract people.

**Q: What are your strengths in managing people?**

**A:** Throughout the 35 years of my professional career, I have worked and dealt with people in the capacity of (1) an engineering team member and (2) as supervisor/manager of teams of engineers, technicians and clerks. This work experience, together with formal academic education in business and management, has equipped me to practice effective managerial skills in salaried and volunteer positions. My managerial performance awards, particularly during the latter years of my career, attest to my claim. I brought this attribute to the PSWD governorship and PSWD redress chair positions, I feel. I let my record in these positions speak for itself.

**Q: What are your strengths in leadership style?**

**A:** My leadership style combines an appropriate mix of task/goal-oriented and people-oriented. I lead people by working diligently myself, encouraging and supporting others, creating a climate where people volunteer to step out and exert their energies to advance the common good. I think I am energetic, enthusias-

tic, communicative, gregarious, innovative, and decisive.

**Q: How do you view communication, cooperation and relationships between the National Board (officers and governors), National staff and general membership?**

**A:** The communication, cooperation, and relationships between the National Board and staff are good.

The communication, cooperation and relationships between governors and general membership are also good. The governors have many opportunities to communicate with their constituents at district meetings, chapter meetings and events.

A concerted effort by national officers, led by the National President, must be made to improve communication with the general membership. How? There are over 26,000 general members. It is true that one-on-one communication may not be possible. But the national officers, led by the National President, can write articles in the PC informing the general membership about matters and happenings at the national level and asking for input from the members on specific issues.

**Q: What would you do to improve or change lines of communication and command?**

**A:** On the line of communication, I interpret the question as asking what the formalized channel of communication should be for implementation of action by the staff. It is recognized that everyone can and should communicate with everyone. However, in matters of JACL policies, issues and implementation of actions, a strict, formalized channel of communication must be established and adhered to. This channel, operating in both directions, is: constituent-governor-National Board-National President-National Director-staff.

Pertaining to command, may I change the word to "direction." It is the duty and responsibility of the National Board, with input from constituents through the governors, to formulate policy and direction. Then, through the National President, clear, definitive direction must be provided to the National Director for implementation. It is also the National Board's responsibility to see that the National Director is executing the policies and directions provided by the board.

The only legacy  
one should leave  
their children  
is

Roots, Dignity, and Wings.



## J A KAMON

Japanese American Family Crest  
Learn Interesting Facts  
on Your Surname!

80% of Japanese surnames have originally been derived from CHIMEI (place names); the rest, from profession, rank titles, etc. If you'd like to learn a few interesting facts concerning your surname (such as its category of origins, variant kanji writings, etc.), please send us your surname in kanji, along with \$7.00. We will send you the above plus other info useful to family history research. In all our research, we utilize the vast collection of references owned by Kei Yoshida who first, in 1972, introduced the Kamon (Family Crest) to the Japanese American community.

Yoshida Kamon Art,  
Los Angeles, CA 90012;  
Kei Yoshida, Researcher/Artist

312 E. 1st St.,

Suite 205

(213) 629-2848 / 755-9429

NINA YOSHIDA, Translator



## NMP of America, Inc.

SUBSIDIARY OF NIPPON MANPOWER CO., LTD.  
3440 Wilshire Blvd., Suite 609, Los Angeles, CA 90010

## EMPLOYMENT AGENCY

Office Personnel Bi-Lingual Japanese Helpful  
Mgmt. — Tech. — Sales Temporary Also Available!

SATURDAYS by appointment  
(213) 385-1287

日本労働

Courtesy H. DICK YAMASHITA, Tokyo; JACL Ways and Means Chair

## National Business-Professional Directory

## Greater Los Angeles

**ASAHI TRAVEL**  
Supersavers-Group Discounts  
Apex Fares-Computerized-Bonded  
1111 W Olympic Blvd., LA 90015  
623-6125/29 • Call Joe or Gladys

**Flower View Gardens #2**  
New Otani Hotel, 110 S Los Angeles  
Los Angeles 90012 Art Ito Jr.  
Citywide Delivery (213) 620-0808

**Dr Darlyne Fujimoto**  
Family Optometry & Contact Lenses  
11420 South St., Cerritos, CA 90701  
(213) 860-1339

**Dr Loris Kurashige**  
Vision Examinations  
Contact Lenses—Vision Therapy  
11420 South St., Cerritos, CA 90701  
(213) 860-1339

**Inoue Travel Service**  
1601 W. Redondo Beach Bl., #209  
Gardena, 90247; 217-1709; Offices  
in Tokyo, Japan / Lima, Peru

**TATAMI & FUTON**  
(818) 243-2754  
SUSUKI FUTON MFG.

## Greater Los Angeles

**Tama Travel International**  
Martha Igarashi Tamashiro  
One Wilshire Bldg., Ste 1012  
Los Angeles 90017; (213) 622-4333

**Tokyo Travel Service**  
530 W. 6th St. #429  
Los Angeles 90014 680-3545

**Yamato Travel Bureau**  
200 S San Pedro St., #502  
Los Angeles 90012 680-0333

## Orange County

**VICTOR A. KATO**  
(714) 841-7551  
Exceptional Real Estate  
17301 Beach Blvd., Suite 23  
Huntington Beach, CA 92647

**The Paint Shoppe**  
LaMancha Center, 1111 N Harbor  
Fullerton CA 92632, (714) 526-0116

## San Diego

**PAUL H. HOSHI**  
Insurance Service  
852-16th St. (619) 234-0376  
San Diego CA 92101 res. 421-7356

## Ventura County

**Calvin Matsui Realty**  
Homes & Commercial  
371 N. Mobil Ave., Ste. 7,  
Camarillo, CA 93010, (805) 987-5800

## San Jose, CA

**Kayo K. Kikuchi, Realtor**  
SAN JOSE REALTY  
996 Minnesota Ave., #100  
San Jose, CA 95125-2493  
(408) 275-1111 or 296-2059

**Tatsuko "Tatty" Kikuchi**  
General Insurance Broker, DBA  
**Kikuchi Ins. Agy.**  
996 Minnesota Ave., #102  
San Jose, CA 95125-2493  
(408) 294-2622 or 296-2059

**Physical Therapy**  
Diane Shiraishi RPT; Chris Ota RPT  
2337 Forest Ave., San Jose 95128  
(408) 246-5861

1580 S. Winchester Blvd. #108,  
Campbell 95008; (408) 866-5567

**Edward T. Morioka, Realtor**  
580 N. 5th St., San Jose 95112  
(408) 998-8334 bus; 559-8816 res.

## Watsonville

**Tom Nakase Realty**  
Acreage, Ranches, Homes, Income  
TOM NAKASE, Realtor  
25 Clifford Ave. (408) 724-6477

## San Francisco Bay Area

**IRENE A. OGI**  
ATTORNEY-AT-LAW  
848 Cleveland St., Oakland,  
CA 94606 (415) 832-1055

**Y. KEIKO OKUBO**  
Five Million Dollar Club  
3912 Mission Blvd.,  
Fremont, CA 94539; (415) 651-6500

## The Intermountain

**Mam Wakasugi, Sales Rep.**  
Row Crop Farms; Blackaby Real  
Estate, 36 SW 3rd St, Ontario, OR  
97914 (503) 881-1301, 262-3459

## Eastern District

**Mike Masaoka Associates**  
Consultants - Washington Matters  
900-17th St NW, Wash, DC 20006  
(202) 296-4484

## Seattle, Wa.

**Imperial Lanes**  
Complete Pro Shop, Restaurant, Lounge  
2101-22nd Ave So. (206) 325-2525

**UWAJIMAYA**  
...Always in good taste.



For the Best of  
Everything Asian.  
Fresh Produce, Meat,  
Seafood and Groceries.  
A vast selection of  
Gift Ware.

Seattle • 624-6248  
Bellevue • 747-9012  
Southcenter • 246-7077

Kimura  
PHOTOMART

Cameras & Photographic Supplies  
316 E. 2nd St., Los Angeles, CA 90012  
(213) 622-3968

Commercial & Industrial Air Conditioning  
and Refrigeration CONTRACTOR

**Glen T. Umemoto**  
Lic. #441272 C38-20

**SAM REIBOW CO.** 1506 W. Vernon Ave.  
Los Angeles/295-5204 SINCE 1939

## ED SATO

## PLUMBING &amp; HEATING

Remodel and Repairs. Water Heaters,  
Furnaces, Garbage Disposals  
Serving Los Angeles, Gardena  
(213) 321-6610, 293-7000, 733-0557

## Aloha Plumbing

Lic. #440840 - Since 1922  
PARTS - SUPPLIES - REPAIR  
777 Junipero Serra Dr. San Gabriel, CA 91776  
(213) 283-0018 • (818) 284-2845



LARGEST STOCK OF POPULAR &  
CLASSIC JAPANESE RECORDS,  
MAGAZINES, ART BOOKS, GIFTS  
Two Stores in Little Tokyo  
300 E. 1st - 340 E. 1st  
Los Angeles, CA - (213) 625-0123  
625-0123 - 625-8673  
S. Uyeyama, Prop.