

Pacific Citizen

November 26, 1982

The National Publication of the Japanese American Citizens League

ISSN: 0030-8579 / Whole No. 2,216 / Vol. 95 No. 22

30¢ Postpaid
News Stand 20¢



PC Photo by Peter Imamura

IMMIGRATION BILL AUTHOR—Rep. Romano Mazzoli (D-Ky.) recently visited California in an effort to hear concerns over the proposed Immigration Reform and Control Act of 1982, which he is co-sponsoring with Sen. Alan K. Simpson (R-Wyo.). The bill goes to Congress on Nov. 29.

Mazzoli sees no bias in immigrant reform bill

By PETER IMAMURA

LOS ANGELES—Rep. Romano L. Mazzoli (D-Ky.), co-author of the proposed Immigration and Reform Act of 1982, said he doesn't think the legislation will create any strong discriminatory effects for minorities because the bill is crafted to keep that potential problem "at an absolute minimum."

Mazzoli, along with Sen. Alan K. Simpson (R-Wyo.), is co-sponsoring the bill which passed the Senate last August. It is set to go before the House of Representatives during the lame duck session, which begins Nov. 29.

Mazzoli spoke with reporters Nov. 11 after appearing on KNBC-TV's "News 4 L.A.—4 p.m. Edition." The congressman was touring the West Coast in an effort to hear some of the concerns over the bill.

Heavily Criticized

The Simpson-Mazzoli bill has been under heavy criticism from Hispanic and Asian community organizations, who feel the bill is an attack against minorities and immigrants, stemming from the high unemployment rate that exists in the country.

The Senate and House versions of the bill are very similar to each other with a few differences. Both the House and Senate bills call for civil and criminal sanctions against employers who knowingly hire illegal aliens; a national identification system for immigrant workers; amnesty for most illegal aliens already in the U.S. (with terms varying by category and length of stay); new quotas on legal alien admissions; and revision of temporary guest-worker programs.

The Senate version also calls for the elimination of the fifth visa preference, which allows brothers and sisters of U.S. citizens to petition for admission in the country. However, the House version was amended to retain this category, which came about in part through the lobbying efforts of Asian Americans (since many Asian immigrants use the fifth preference).

The chances of the bill passing in Congress appear to be slim, and it recently lost the support of some California farmers. Business and political leaders in Mexico have also expressed opposition to the bill.

During the press conference, Beatriz Johnston, a reporter for the Latino newspaper La Opinion, questioned Mazzoli about the potential discrimination against "foreign looking" U.S. citizens and legal residents that might result from the proposed immigration law.

Some Discrimination Possible

Mazzoli said that while there is "some possibility of discrimination" occurring during the enforcement of the proposed law, there would also be certain safeguards built in—such as investigations by the Civil Rights Commission, the U.S. Attorney General's office and the Department of

Continued on Page 5

Abacus still popular in Japan despite boom in calculators

TOKYO—The ancient "soroban," or abacus, is holding its place in Japan's schools and offices, virtually unaffected by the onslaught of electronic calculators.

Educators hail them as effective tools to teach children basic math concepts. Tickets-sellers swear by them, tax accountants wield them, shop owners keep them beside cash registers, and many banks require job applicants to demonstrate their proficiency in using the abacus.

The rectangular computing tray, usually framed with wood, has several rows of five beads each—one in its upper section, four

on the bottom. By sliding the beads back and forth, users can add, subtract, multiply or divide.

Japanese merchants first brought abacuses here from China around the 16th century. The device, originally using bamboo rods, was developed in China as early as the 6th century B.C. The Egyptians used to calculate in the same manner during the 5th century B.C.

Today, in Tokyo's bustling Ginza district, 10 workers issue 30,000 subway tickets a month with the aid of the abacus.

"It's faster than modern gadgets

Continued on Page 4

Japan grows weary of being 'scapegoat' for U.S. on trade

TOKYO—The Japanese say they have become a scapegoat for America's economic miseries and the victim of its election campaign hyperbole. The U.S. says the Japanese are "unyielding" and insensitive to the danger of protectionist legislation.

The Associated Press reported Japan's trade surplus with the United States should hit 20 billion U.S. dollars this year, up from \$15.8 billion last year, and both sides of the Pacific agree that friction over the inability to stem Japan's economic advantage has again reached serious proportions.

"It's going to get very tense over the next few months," said a U.S. official here. The new Congress in Washington will be pressing for legislation to limit Japan's auto and other imports, he said, while the government in Japan, undergoing a leadership change after the resignation of Prime Minister Zenko Suzuki, is in no position to respond.

Washington has been openly critical in several recent rounds of trade talks, reflecting what the official called America's "perception that Japan is not doing what it can" to open its markets to U.S. products.

In a late October meeting in Honolulu, the U.S. side, rebuffed in its demand that Japan remove import tariffs on U.S. beef and oranges in 1984, went home after two days of a scheduled three-day meeting, catching the Japanese completely off guard.

Several days later Japan refused a U.S. request that the 35% tariff on foreign cigarettes be removed, prompting U.S. trade representative director for Japan Joseph A. Massey to call the Japanese "unyielding" and warn that Japan's international markets would dry up unless it opened its own markets.

In Washington, the steel industry is pushing the administration to limit steel imports from Japan. A U.S. trade representative said Japanese automakers, facing legislation that would require American components in their cars, should voluntarily restrict imports next year for the third straight year.

The American government has strongly opposed protectionist legislation, but the official, who asked not to be named, said "if Japan doesn't do something, he (U.S.

President Ronald Reagan) will have difficulty continuing" his anti-protectionist stance.

The Japanese on the other hand, cite measures taken this year to simplify testing and customs procedures and reduce tariffs on a wide range of products, and say it is unfair to blame Japan for America's high unemployment and low productivity.

"It is unfortunate that problems of a purely economic nature are politicized because of domestic political conditions, especially in the United States," said Taizo Watanabe, a foreign ministry senior spokesman.

He said Japan was prepared to expand import quotas on 40 non-citrus, non-beef farm products before the Honolulu talks were cut short. "These offers...were not made easily by Japan, and it is most unfortunate that they have not been appreciated," he said.

Local television gave daily coverage to the U.S. mid-term elections, spotlighting candidates espousing laws to shut out Japanese products. The conservative daily Sankei Shimbun expressed concern in an editorial about a "bash-Japan" line emerging in the campaign which "is tantamount to a 'Jap-hunt' with the intensity of

Continued on Page 4

Astronaut Onizuka will fly in Fall '83

CAPE CANAVERAL, Fla.—NASA astronaut Ellison S. Onizuka will be among the crew members of the Shuttle spacecraft "Challenger," scheduled to launch on Nov. 5, 1983, making him the first Asian American to fly on a space mission.

The Hawaiian-born Onizuka will join astronauts Thomas K. Mattingly, Loren J. Shriver, James F. Buchli and a fifth crew member (to be named later) aboard the Space Transportation System 10 fleet. Onizuka and Buchli will serve as a mission specialists, while Mattingly will command the shuttle and Shriver will pilot it.



PC Photo by Peter Imamura

IT'S OFFICIAL—Los Angeles County Supervisor Kenneth Hahn (center) announces Nov. 16 that the Board of Supervisors has approved the ordinance providing up to \$5,000 in compensation to Japanese American county employees who were unjustly dismissed from their jobs during World War II. Those present during the announcement include (l to r): Deputy Supervisor Mas Fukai; Taro Kanow, a former county engineer; attorney Frank F. Chuman, who worked for the county's Probation Dept. before the war; and JACL PSWDC Regional Director John Saito.

CWRIC member says commission may urge individual reparations

WASHINGTON — The nine-member Commission on War-time Relocation and Internment of Civilians will soon release its findings and recommendations, and two members of that body say the CWRIC will urge the federal government to pay compensation to Japanese Americans who were evacuated and interned during World War II.

The Los Angeles Times reported Nov. 17 that CWRIC member Fr. Robert F. Drinan said the commission may recommend reparations at a rate of up to \$25,000 for each of the some 60,000 survivors of the relocation camps—a total of \$1.5 billion. Other members of the commission, however, said the exact amount of the compensation has not been settled and could be considerably lower.

In addition to the monetary reparations, the Times reported that commission members plan to call on Congress and the President to issue a formal apology to the Japanese Americans who were affected. The CWRIC will also recommend that a special trust fund would be established for projects honoring Japanese Americans.

Consensus Reached

Drinan and another commission member who asked not to be identified both said the CWRIC had already reached a consensus on paying compensation and apologizing to the survivors of the



Fr. Robert Drinan

camps, reported the Times.

However, Sue Wrenn, spokesperson for the CWRIC, told the PC in response to the Times' story that the commission "has not made its final decision" on exactly what recommendations it will make.

The CWRIC was scheduled to meet here this week (Nov. 22) to further discuss its findings and recommendations. The commission's report is scheduled to be released next month.

Drinan, a former U.S. Congressman from Massachusetts, had also told the Times that no agreement has been reached by the CWRIC on compensation to heirs of the Japanese Americans who were confined in the camps.

Continued on Page 4

L.A. County Supervisors pass bill to pay fired Nikkei workers

LOS ANGELES—The Los Angeles County Board of Supervisors on Nov. 16 formally adopted the ordinance that would pay up to \$5,000 in compensation to Japanese American county employees who were forced to take a leave of absence during World War II.

The statute was introduced by Supervisor Kenneth Hahn Nov. 9 and the board unanimously (5-0) voted to place the ordinance on their agenda for adoption. The board then approved the measure by a 4-1 vote (one supervisor, Deane Dana, was absent).

Hahn's measure, researched by his deputy Mas Fukai, is similar to the state bill AB 2710, authored by Assemblyman Patrick Johnston, which compensates fired Nikkei state workers.

Hahn's bill, like AB 2710, will provide up to \$1,250 per year for up to four years to Nikkei workers who suffered loss of salary as a result of the WW2 Evacuation.

The county's Chief Administrative Office will handle the claims and determine eligibility. No persons other than the actual former employee may file a claim.

The law goes into effect on Dec. 16, and first-year claims must be filed with the CAO by May 15, 1983.

Hahn noted that about 49 Japanese American county employees would be eligible for the payments, but according to Hahn's spokesman, Dan Wolf, about 30 of those persons are expected to file (a list of 46 eligible claimants was printed in the PC Nov. 19).

Gardena Adopts Resolution

Meanwhile, in Gardena, the city council voted unanimously Nov. 9 to approve the resolution which repeals a 1942 ordinance calling for the evacuation and relocation of Japanese aliens from the city.

The resolution will be sent to all cities and counties on the West Coast, asking that they adopt a similar one. It rescinds an order of the Gardena City Council in 1942 that Japanese aliens coming into the city be removed to remote farming areas.

The resolution's originator, Fukai (who is also a member of the Gardena City Council), said he intended the resolution not as an erasure of the historical record, but as a means of bringing history up to date.

Nikkei pianist wins praise from President after concert

WASHINGTON—Pianist Ken Noda, who is all of 20, made his White House debut Nov. 7 in the East Room, under the patronage and in the presence of the President and Mrs. Reagan.

It was this year's opening concert of the "In Performance at the White House" series, in which established performers introduce major young performers who are on the way up.

Last year the emcee was Beverly Sills, and this season it is violinist Itzhak Perlman. Nancy Reagan hosts the series, which is now in its 30th year.

After the concert, Reagan was full of praise for Perlman and Noda.

The president then paid tribute to Noda's "great talent" and said he was so impressed that "if you want to join the Marine Band, I'll sign you right on."

During the reception that followed in the State Dining Room, Noda said the opportunity to make a White House debut came like a bolt out of the blue. "I just got a call from Mr. Perlman one day in September, and he asked, 'How would you like to do a recital with me?'"

said I would like to, and then he added 'How would you like it to be at the White House?' and I was left sort of speechless."

At the reception, Perlman said that Noda, who is already building a reputation as one of the finest of American classical musicians, was the only person he considered for the presentation.

Organization

Fuji Towers of San Jose, Ca., a federally financed low-cost housing for the elderly sponsored by the San Jose Buddhist Church Bet-suin, recently announced its new board of directors for 1983:

Thomas Yuki, pres; Katsumi Tokunaga, vp comm rel; Akira Kamiya, vp comm sen serv; Robert Yoshikawa, vp org/pln; Yosh Uchida, vp fundrsng; Luther Ogawa, gen mgr; Henry Yamate, treas; Phil Matsumura, sec; Tom Nishida, fac maint; George Hanada, Dr. Wright Kawakami, William Thompson, James Hashimoto, Yoshio Ando, I.K. Ishimatsu, Richard Onishi, Jimi Yama-ichi, Jan Kurahara and George Yamaoka, bd membs.

24 Nikkei students from UC Berkeley win scholarships

BERKELEY, Ca.—More than 400 new University of California, Berkeley students from all parts of the state have been awarded alumni scholarships for the 1982-1983 academic year among whom were 24 with Japanese surnames.

The awards were made by the California Alumni Assn., the 93,000-member organization of UC Berkeley graduates.

In all, 1,200 applicants competed for this year's alumni scholarships. Winners, judged by 70 local committees operating throughout the state, were selected on the basis of academic achievement and demonstrated leadership potential. The amount of each scholarship varies and is determined by the applicant's financial need.

Scholarship funds totalled more than \$130,000. Funds come from

the University's Board of Regents, the U.C. Berkeley Foundation, the Berkeley Chancellor's Office, local alumni affiliate groups and individual donations.

The 24 alumni scholars with Japanese surnames are:

San Francisco—Yuko Nakagawa, Lowell High School; Oakland—Eric Tsujimoto, Mark G. Aikawa and Ken K. Sunoo, all of Skyline HS; Paul Imura, Bishop O'Dowd HS;

Hayward—Erin J. Nishimura, San Lorenzo HS;

Castro Valley—Scott S. Tsugawa, Castro Valley HS;

El Cerrito—Lynne Norikane, Kennedy HS;

Lafayette—John Suezaki, Acalanes HS;

Cupertino—Ellen Aoki, Monta Vista HS;

Santa Clara—Michael Nishimoto, Cupertino HS;

Los Altos Hills—Jill Shibuya, Los Altos HS;

Chico—Katherine S. Kanda, Pleasant Valley HS;

Woodland—Tammy Toyama, Woodland HS;

Turlock—Allyson U. Yotsuya, Turlock HS;

San Jose—James Kobori, Branham HS; John A. Minami, Willow Glen HS; and John M.

Murai, Lynbrook HS; Campbell—Shirley E. Yasukawa, West Valley College; Salinas—Stacie Hibino, Salinas HS; and Elsie Matsuno, Gonzales HS;

Monterey Park—Cindy Oda, Alhambra HS; La Palma, Orange County—Jean Masuo, Kennedy HS; San Diego—Hiroko Mori of Encinitas, San Dieguito HS.

Doctor forfeits license on drug charge

LOS ANGELES—Dr. Masaharu Tokunaga, a local physician described by a judge as "a danger to the public," has agreed to surrender his medical license to avoid contempt proceeding in which he is charged with prescribing drugs against court orders.

Ronald S. Marks, Tokunaga's attorney, said Nov. 1 that the state Board of Medical Quality Assurance still must approve the settlement, but that the license forfeiture probably will take effect by the end of the year.

The lawyer said Tokunaga will seek reinstatement of his license one year after he surrenders it, as permitted by state law.

Deputy Atty. Gen. Gail H. Heppell had asked Los Angeles Superior Court Judge Leon Thompson to find the doctor in contempt of court, punishable by five days in jail and a \$500 fine. Heppell claimed Tokunaga improperly filled 84 prescriptions since his arrest last June 7 and six since Thompson first restrained him from practicing Aug. 12.

Tokunaga still faces 19 felony criminal charges of violating the state Health and Safety Code by issuing unwarranted prescriptions under false names.

Investigators said Tokunaga practiced at five weight-control clinics in Los Angeles and Orange counties, but the investigators claimed in court documents that his prescriptions had little to do with weight control.

They claimed Tokunaga regularly wrote about 500 triplicate prescriptions a month for controlled drugs such as Ritalin, Quaalude and Preludin, giving many people prescriptions under several names and without physically examining them.

Marks said the weight-control clinics will remain in business, but that Tokunaga will work there only in a managerial or business capacity. The lawyer said the doctor also will seek volunteer work in the health field and take continuing education classes.

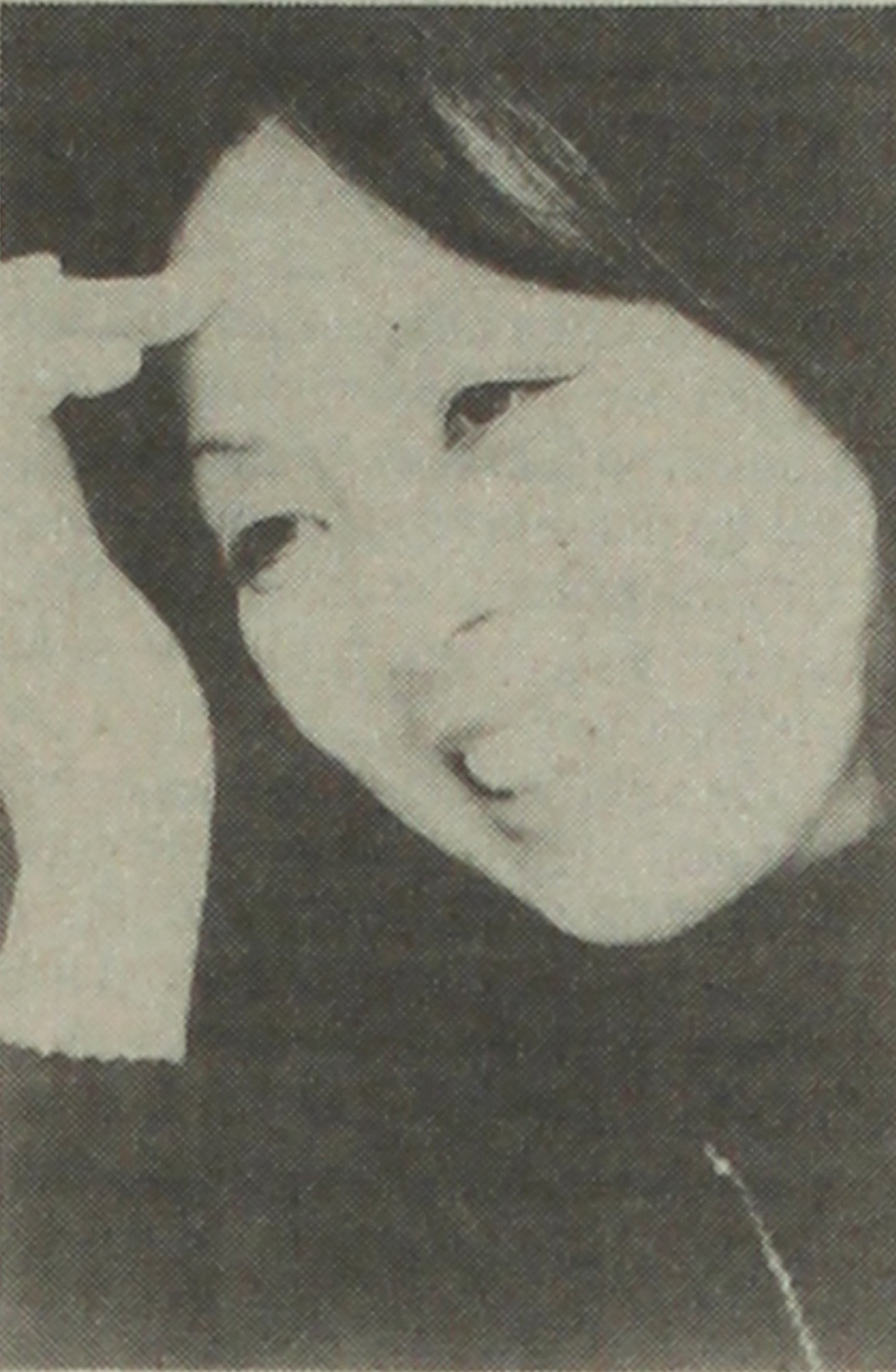
**Excellent New Purchase Plan
Makes Vacation Home Ownership
Possible & Affordable NOW!**



Huntington Vacation Condos
\$15,300 Dwn, \$395 mo.

Take a drive up to Huntington Lake this week and see how we can give you ownership in a beautiful luxuriously furnished condominium near Sierra Summit Ski Area (formerly China Peak), for as little as \$15,300 down and \$395 per month, including principal, interest & homeowners fee, insurance, property tax and utilities, etc., if based upon the purchase by four individual or families, each paying the same amount. Excellent opportunity for you to buy or a financial planner to put together a purchase. A purchase also gives you outstanding tax consequences and good potential rental income.

Don't wait on this one. This is not a timeshare or limited partnership or anything other than a straight real estate transaction. Call now for an appointment in time for the coming ski season. (209) 893-3384. Marcia Beach, Broker; Huntington Condominiums, P O Box 348, Lakeshore, CA 93634



TOSHIKO AKIYOSHI, jazz pianist, will perform with her trio at the Davies Symphony Hall in San Francisco on Saturday, Nov. 27, 8:30 p.m. as part of the "Piano Variations" concert which will also feature the Teddy Wilson Trio and Ahmad Jamal. For ticket info call (415) 835-4342.

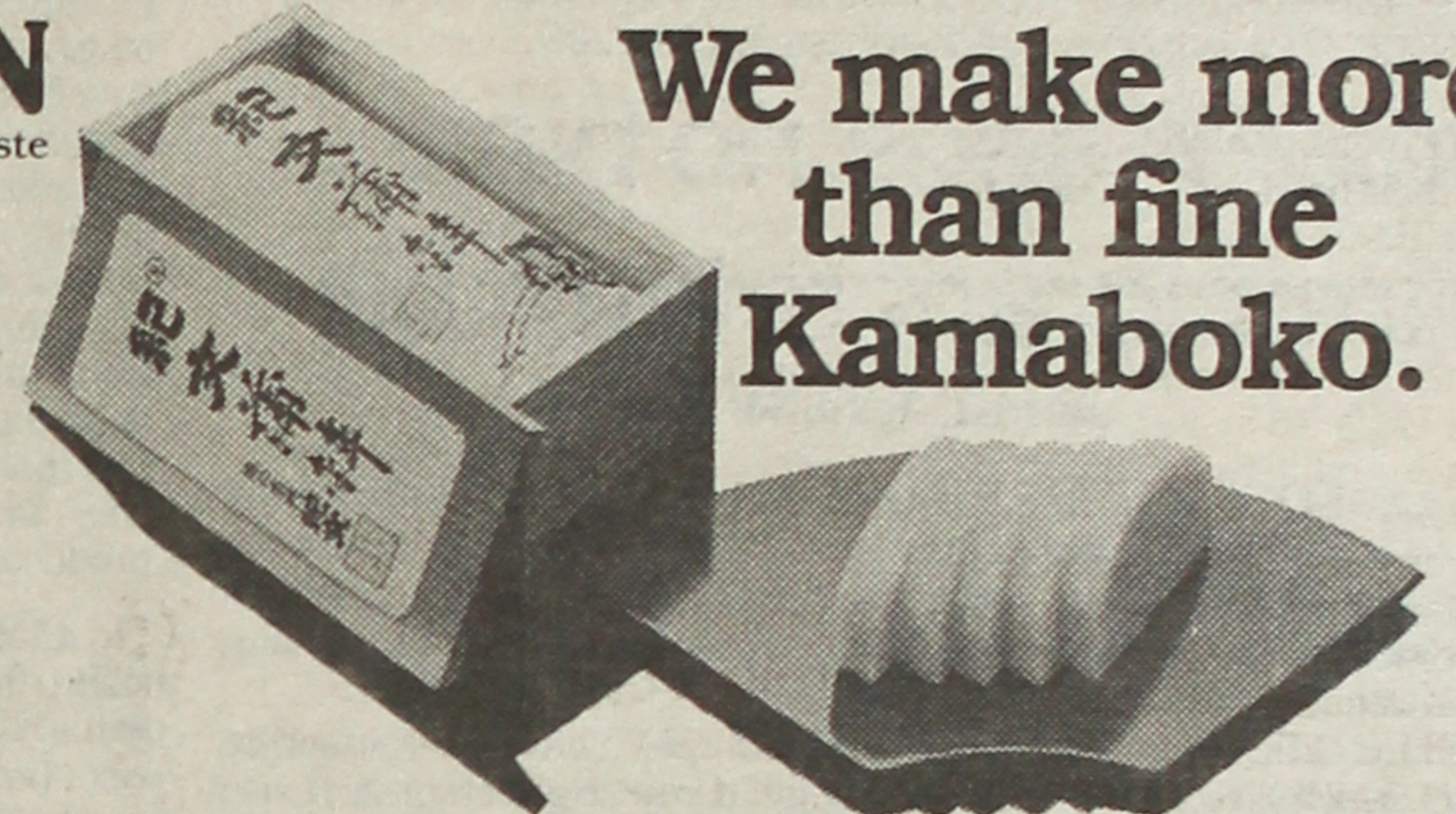
TOYO Miyatake

STUDIO

318 East First Street
Los Angeles, CA 90012
(213) 626-5681

KiBUN
Masters of good taste

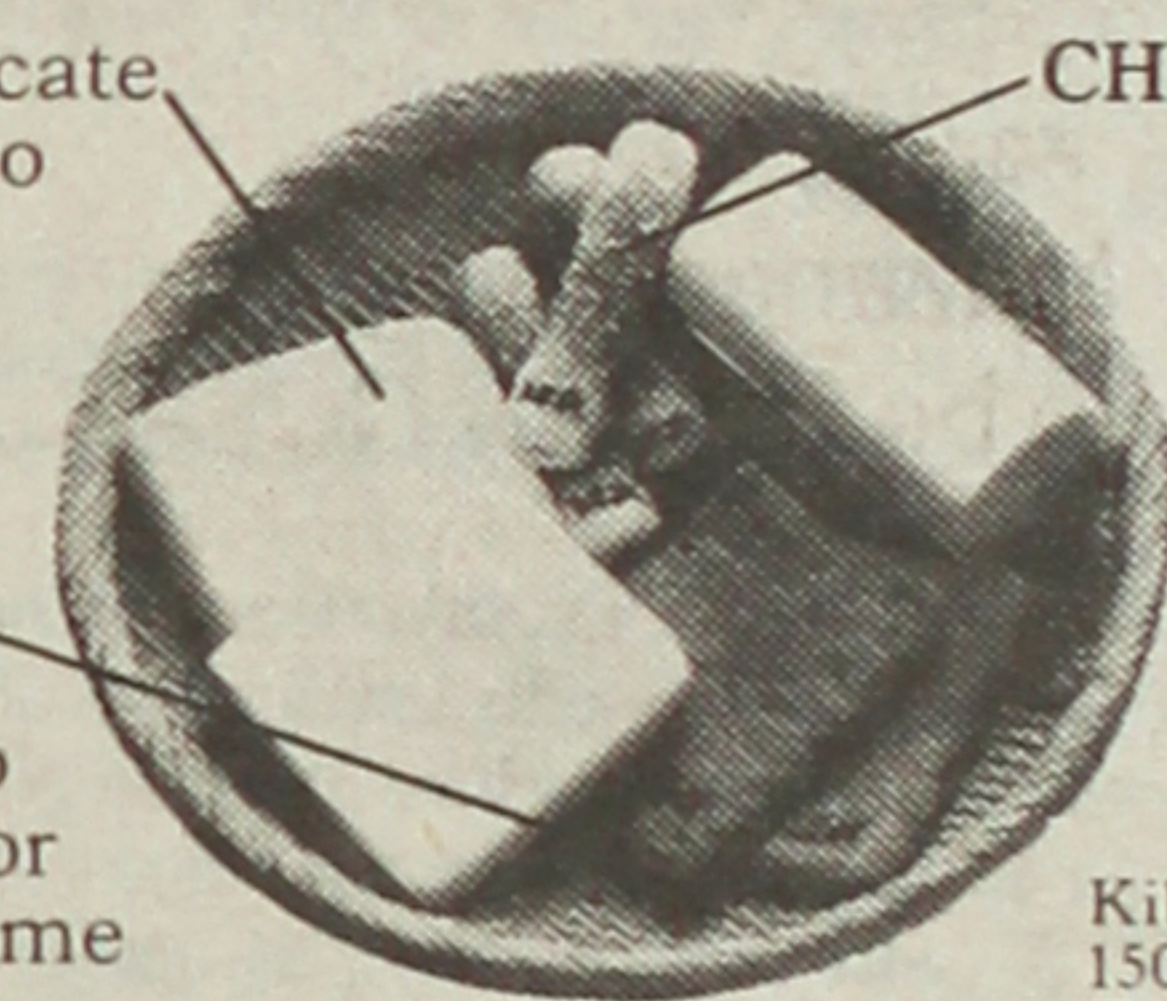
We make more than fine Kamaboko.



We also create other traditional fish cakes.

HANPEN A light and delicate fish cake that is so easy to prepare as a hot dish. Grill it, broil it or stuff and then deep fry.

EBI TEN This tempura style fish cake is a delicious blend of shrimp and vegetables. Broil it for fish sandwiches. Slice some into a salad.



CHIKUWA Our versatile cylinder-form fish cake is ready to be stuffed and sliced for cold hors d'oeuvres. Stir fry to create hot dishes.

Call or write for recipes! 味の名門 紀文

Kibun Products International, Inc.
150 S. Los Robles Ave., Suite 560
Pasadena, CA 91101 (213) 681-0726

HOLIDAY SALE

10% OFF ALL COOKBOOKS AND CHILDRENS BOOKS
25% OFF SELECTED BOOKS

Amerasia Bookstore & Gallery
338 E. 2nd St. Los Angeles
Mon-Thurs. 10:30-6:00 Fri., Sat. & Sun. 10:30-8:00

A GREAT CHRISTMAS GIFT!

BEGINNINGS: Japanese

Americans in San Jose

Oral Histories in Japanese & English
Historic Photos

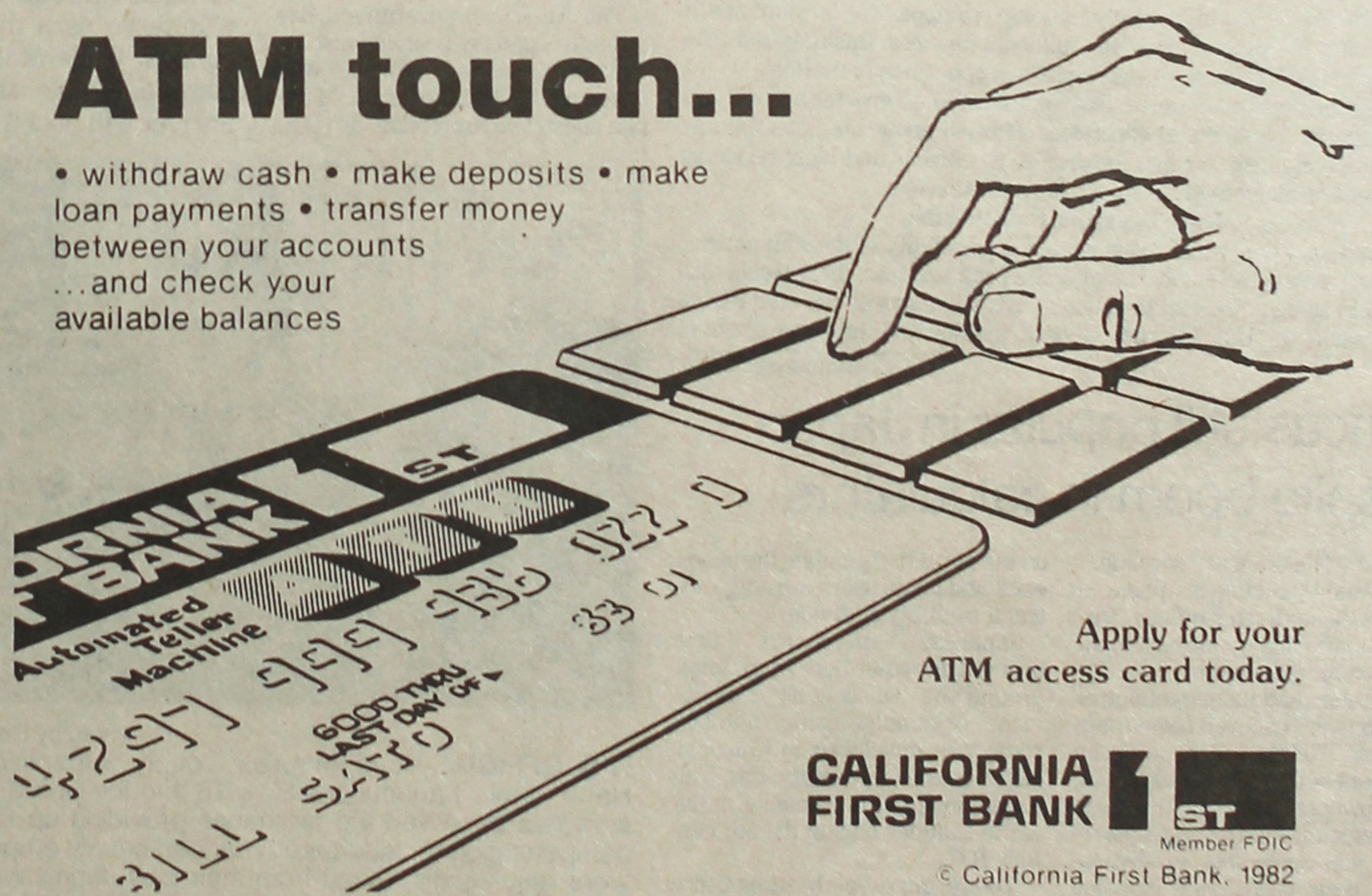
ORDER FROM:
Yu-Ai Kai Senior Ctr.
171 Jackson St.
San Jose, CA 95112

\$12.95
includes postage and handling. Special discount if purchased in S.J. Japan Town.



ATM touch...

• withdraw cash • make deposits • make loan payments • transfer money between your accounts
...and check your available balances



Apply for your ATM access card today.

CALIFORNIA FIRST BANK

Member FDIC

© California First Bank, 1982

Nightclub owner killed in robbery

LOS ANGELES—Kenichi Igarashi, owner of two nightclubs and a restaurant in the Los Angeles area, was shot and killed in front of his Rowland Heights home at about 3:15 a.m. Nov. 7, according to Sheriff Lt. Al Etzel.

The Japan-born Igarashi was the owner of the Latin Lady, Palm Drive Dance Club and the Kifune Restaurant in Marina Del Rey.

The 47-year old victim was known to carry large amounts of money and robbery may have been a motive although no money was taken from his body after he was shot.

The robbery may have been thwarted when a police officer who lives across the street from Igarashi's residence ran out to the street when he heard the shot.

According to the officer, a car sped down the street at high speed when he ran out of his house.

The victim's mother, Mrs. Shoun Igarashi, said that her son had been very careful of late because suspicious persons have been seen in the neighborhood in

EBJA offers giant hand-made quilt

BERKELEY, Ca.—The East Bay Japanese for Action (EBJA) Nutrition Program Quilting Class will raffle their hand-made quilt to benefit EBJA. The Cherry Basket Design quilt valued at \$750 is made of all cotton material and measures 82 inches by 82 inches. Each square is signed by its creator and the entire quilt took 5 months to complete.

The drawing for the quilt will be Thursday, Dec. 23, at the Nutrition Program site, 1524 Oregon St. Tickets (\$1 donation) are available at the EBJA Office, 1908 Berkeley Way, (415-848-3560). Quilt will be on display at various locations, please call EBJA office for current location.

ISSN: 0030-8579

PACIFIC CITIZEN

Published by the Japanese American Citizens League every Friday except the first and last weeks of the year at 244 S. San Pedro St., Los Angeles, Ca 90012; (213) 626-6936 • 2nd Class postage paid at Los Angeles, CA. Annual Subscriptions—JACL members: \$8.50 of national dues provides one-year on a per-household basis. Nonmembers: \$16, payable in advance. Foreign addresses: Add U.S.\$8 • News or opinions expressed by columnists other than JACL staff do not necessarily reflect JACL policy.

A Holiday Gift Idea!

GO FOR BROKE!

A pictorial history of the Japanese American

100th Infantry Battalion and 442nd Regimental Combat Team

A beautiful limited first edition, 184 pp, 240 b&w photos, 10 maps on heavy glossed paper • \$34.95 + \$2.27 tax for Calif. buyers and \$3 shipping

A tremendous product... helps people like me understand what came before us. —RON WAKABAYASHI

Congratulations on a very fine book. —COL. YOUNG OAK KIM
I am proud of what these Americans have done in spite of the prejudices and obstacles confronting them. They were truly the noblest of us all. —MIKE MANSFIELD, U.S. Ambassador to Japan.

It should be included not only in every Nikkei library, but in every library in the country. —JOE OYAMA

Send _____ books to the following address:

NAME _____

ADDRESS _____

CITY _____

STATE _____ ZIP _____

Send order to JACP, Inc., 414 E 3rd Ave, San Mateo, CA 94401
'GO FOR BROKE' available at Amerasia, Los Angeles; Kinokuniya, San Francisco & New York; Uwajimaya, Seattle; Toguiri Mercantile, Chicago; Honolulu Book Shops

recent days.

The victim was beaten and robbed of large amounts of cash on several other occasions, according to Mrs. Igarashi. He continued to carry large sums of cash, according to her.

The victim and his wife, Maria have four children.

Although there are no leads on the suspect investigating officer Andy Finnegan has been assigned to the case.

Four charged with rape of woman

LOS ANGELES—Four teenagers have been charged with kidnapping and raping a 20-year old Japanese woman, a L.A. County Sheriff's Department spokesman revealed Nov. 8.

Sheriff's Deputy Ward Finch said the woman was walking with a 19-year old female companion along Sunset Blvd. in West Hollywood at 2:45 a.m. earlier this month when a van with four males in it approached. The woman was abducted as her younger friend escaped.

Finch said the four men took turns raping the woman before dropping her off about an hour later. Based on descriptions furnished by the victim, deputies apprehended Russell Salazar, 18; Norman Hood, 18 and two 17-year olds shortly before dawn.

Salazar and Hood were held on \$20,000 bail each.

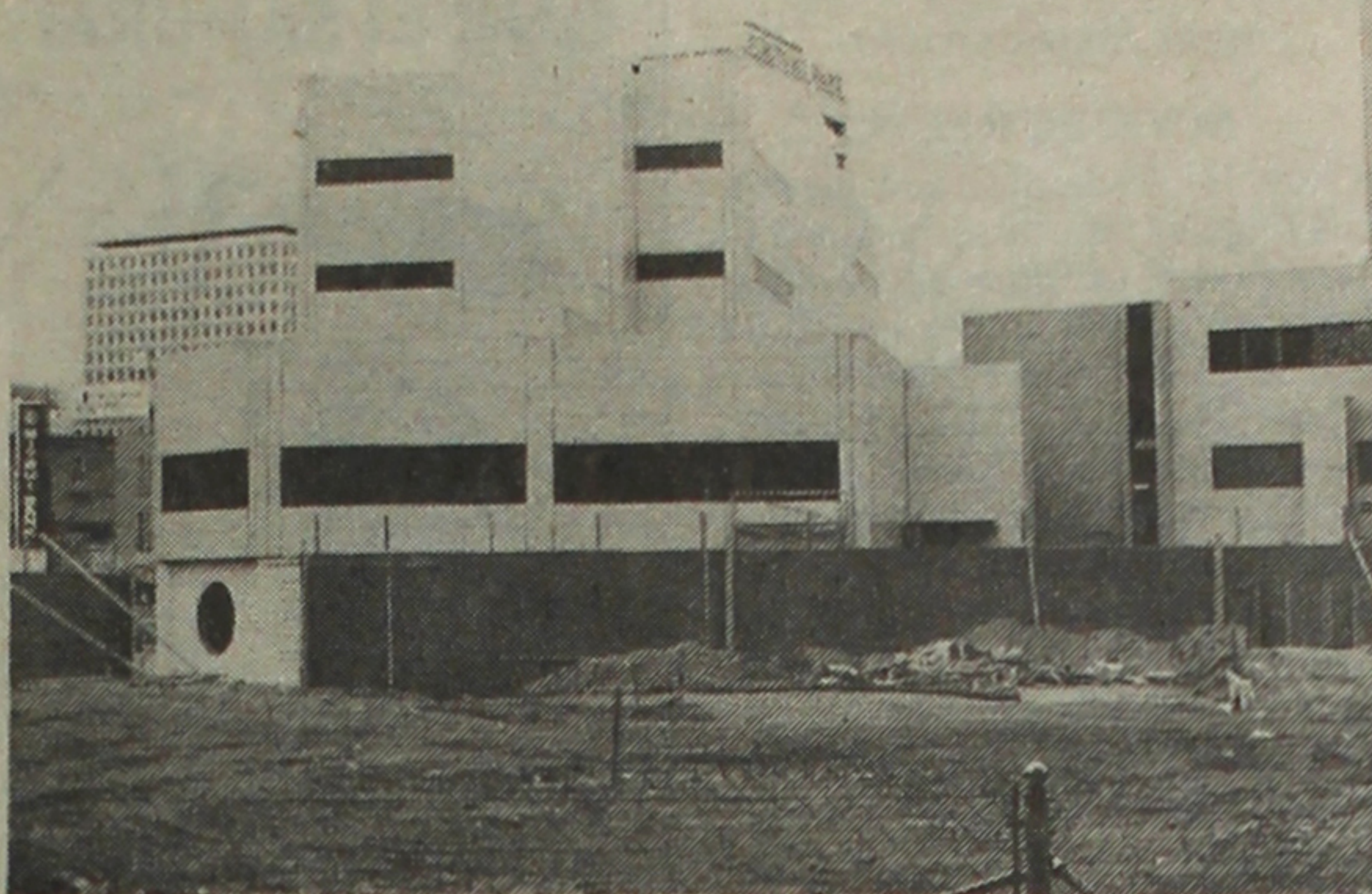
Finch said both women are Japanese nationals who live in the Hollywood area.

ACCI Mental Health Project open house

SAN JOSE, Ca.—The Mental Health Project of Asian Americans for Community Involvement will hold an open house on Wednesday, Dec. 1, 4-6:30 p.m. at 1249 N. First St. For more info call (408) 998-1544.

Mazanar riot figure to be feted by NCJAR

LOS ANGELES—Harry Ueno, a central figure in the "Manzanar Riot" of Dec. 6, 1942, will be honored by the National Council for Japanese American Redress on Saturday, Dec. 4 6:30 p.m. at the Plymouth Congregational Church, 144 S. Greenwood Ave in Montebello. William Hohri, NCJAR chair, will be the guest speaker.



NEARING COMPLETION—The Mitsui Manufacturers Bank in Little Tokyo is nearly completed, while construction of the JACCC Plaza (foreground) continues underway. A 12-foot wall is being constructed around the Plaza, which was designed by renowned sculptor Isamu Noguchi.

Buddhist art exhibit heads for L.A.

LOS ANGELES—The Los Angeles County Museum of Art has been awarded a grant for \$150,000 from the National Endowment for the Arts to support the research and organization of "Light of Asia: Buddha Sakyamuni in Asian Art," a major traveling exhibition of Asian Buddhist art. Earl A. Powell, III, Director of the Museum, recently announced that the exhibition, which is scheduled to open at the Museum in March 1984, is the first to explore this theme in over twenty years. The grant will also support the publication of a fully illustrated catalogue to accompany the exhibition. In addition to being shown in Los Angeles, the exhibition is expected to travel to two other American cities.

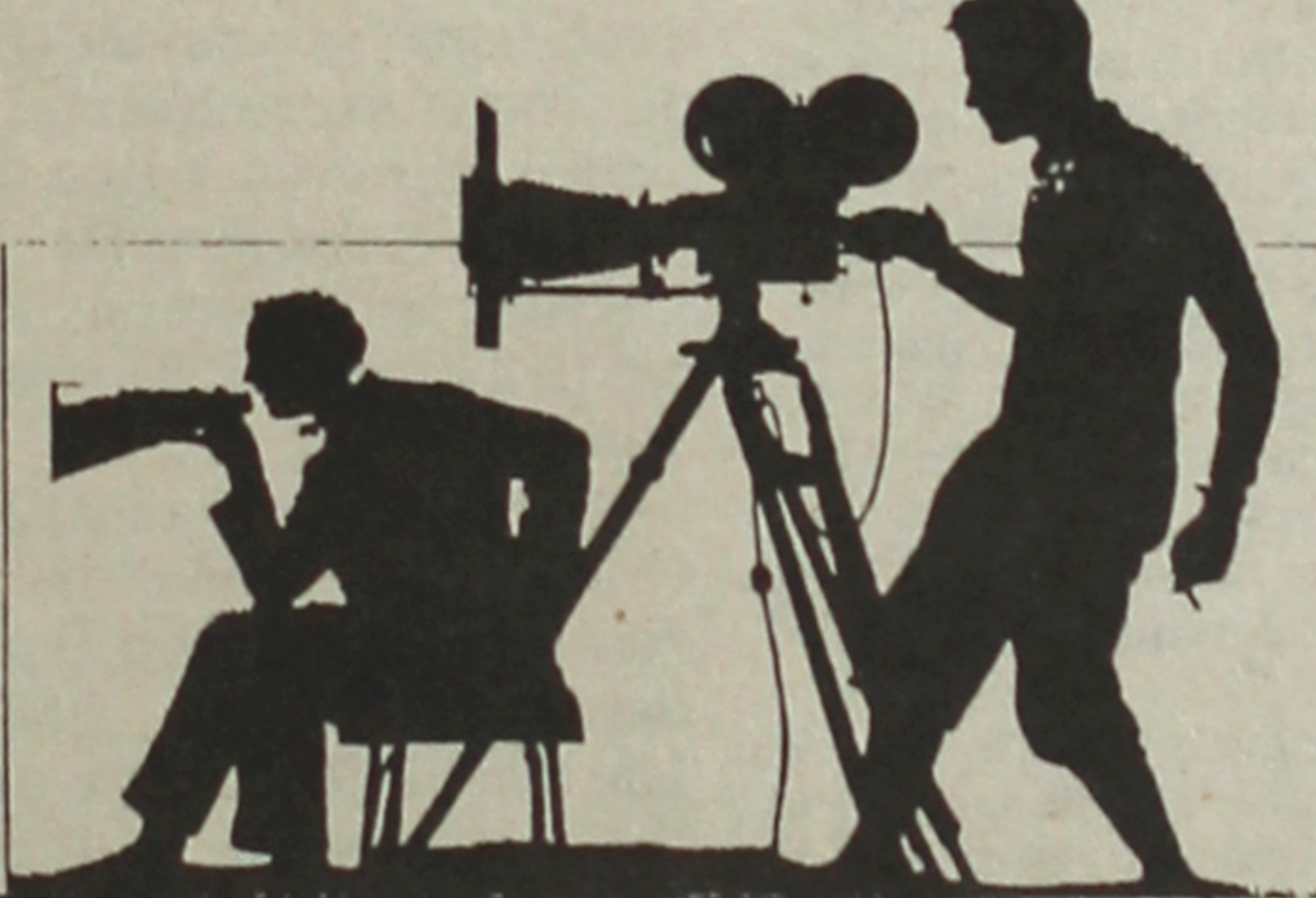
The exhibit will include approximately 170 works of art from Afghanistan, Burma, China, India, Japan, Java, Khmer, Korea, Laos, Pakistan, Sri Lanka, Thailand, and Tibet, on loan from museums and private collections in the United States, Europe and Asia. Works in all media, including stone, bronze, stucco, terracotta, wood, painted cloth, palm leaf, jade and ivory, will be displayed in two sections: narrative scenes representing the life of Sakyamuni and images and steles of Sakyamuni by himself or with attendants. For more info call (213) 857-6222.



DELIGHTFUL seafood treats
DELICIOUS and
• so easy to prepare

MRS. FRIDAY'S
Gourmet Breaded Shrimps and Fish Fillets

Fishing Processors, 1327 E. 15th St., Los Angeles, (213) 746-1307



THOMSON McKINNON SECURITIES INC.
announces...
HOLLYWOOD ASSOCIATES LIMITED PARTNERSHIP

A \$50,000,000 Public Limited Partnership
Minimum Purchase - 5 units, \$1,000 per unit

An opportunity to invest in a diversified portfolio of major motion pictures. The investor will participate with Warner Brothers in its 1982 and 1983 major motion picture releases.

大映画会社の超大作に投資する好機会！
ワーナー・ブラザーズの1982-83年に封
切上映する大作に投資してみませんか？

To receive further information, including a prospectus, call:

THOMSON McKINNON SECURITIES INC.

Y. CLIFFORD TANAKA, JON TANAKA

445 South Figueroa Street
Los Angeles, CA 90071 (213) 486-9016

Y. Clifford Tanaka

田中康雄

Jon Tanaka

田中ジョン

'IRIS'... another elegant design by
Ayako... as delicate as a Japanese print



For Ladies:
Sizes
S, M, L

\$10.95
POSTPAID

Calif. residents:
add 6 1/2% sales tax.

High quality French-cut style interlock T-shirt...
Light Blue... printed using 4 colors

Send for Latest Brochure of all NB designs - \$1.50
... handy for gifts at the Holiday Season.

NICHI BEI BUSSAN (Since 1902)
140 Jackson St, San Jose, Ca 95112



Indicate Size and Quantity Desired _____

Name: _____

Address _____

City, State, ZIP _____

SECURITIES

COMMODITIES

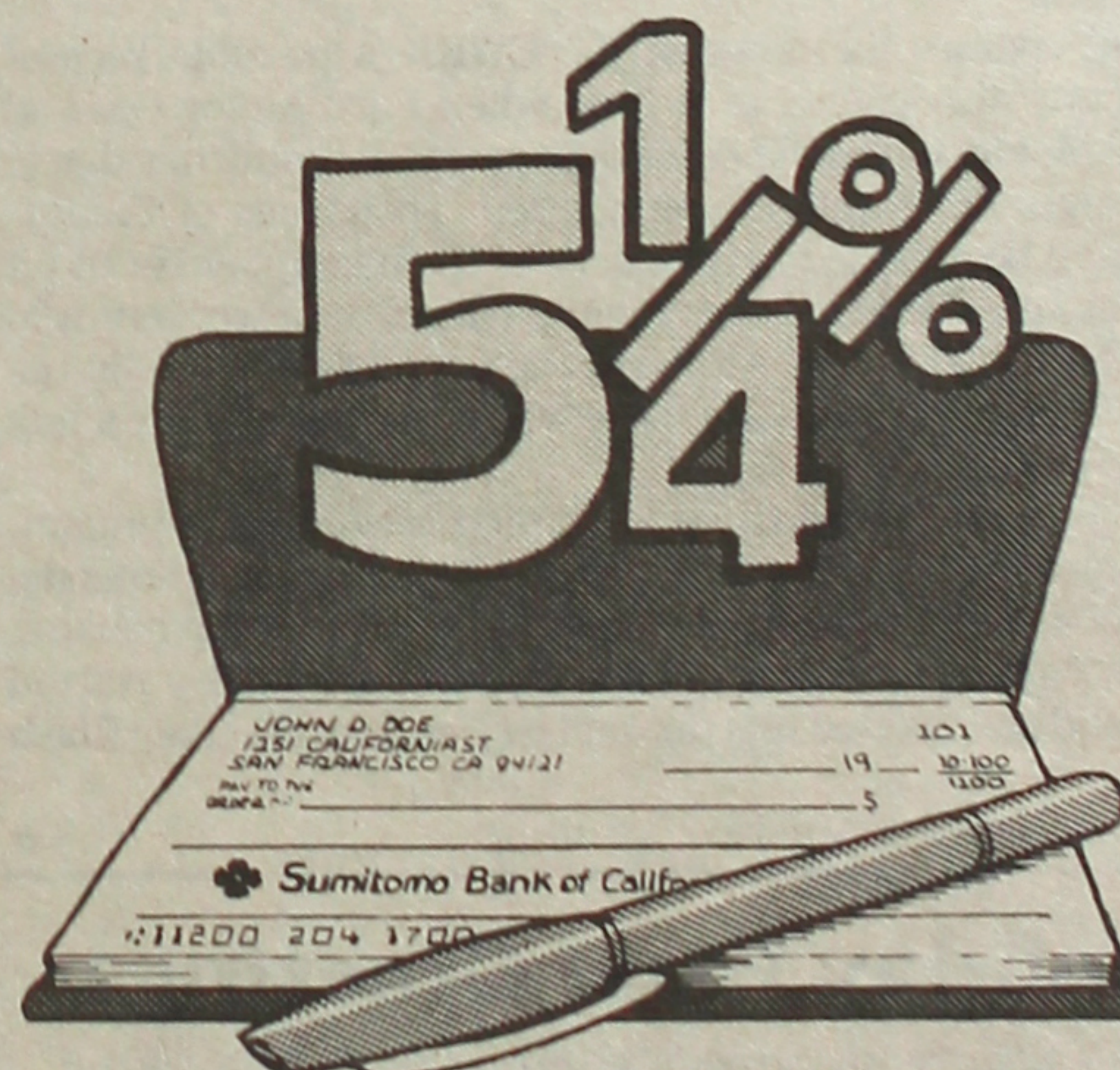
NANCY JOY NIEDA



DEAN WITTER REYNOLDS INC.
(415) 955-6131

Interest
on
Checking...

with
The Sumitomo
NOW Account.



Sumitomo Bank

Sumitomo Bank of California Member FDIC

Pacific Citizen

Floyd D. Shimomura: Nat'l JACL President
Henry S. Sakai, PC Board Chair

General Manager/Operations: Harry K. Honda
Editor: Peter A. Imamura
Advertising: Jane M. Ozawa
Circulations: Tomi Hoshizaki, Mitsuko Sakai
Typesetting: Mary Imon Mailing: Mark Saito

FROM THE NEW WAVE: by Peter Imamura

Cautious Optimism?

Los Angeles

The news that the Commission on Wartime Relocation and Internment of Civilians "may" recommend individual monetary compensation to the some 60,000 Nikkei survivors of the World War II internment camps is certainly a sign of hope, but until the CWRIC releases its "official" findings and recommendations, the Japanese American community can only be "cautiously pleased" for now, as Alan Nishio of the National Coalition for Redress and Reparations expressed.

A commission spokesperson said that CWRIC member Fr. Robert F. Drinan was speaking from his own point of view and not for the entire panel, although Drinan told the Los Angeles Times that a consensus had already been reached among the commission members to recommend monetary compensation.

Fr. Drinan's somewhat premature remarks regarding the CWRIC's report shouldn't be too surprising, because during the hearings last year, he had given some implications that he personally favored monetary reparations for the Nikkei anyway. Fr. Drinan may have stirred up a commotion among the commissioners by "jumping the gun" but controversy shouldn't be a stranger to him.

An outspoken liberal, Fr. Drinan had always been a controversial figure in the political arena. He was the first Roman Catholic priest ever elected to Congress (he served Massachusetts' Fourth District) and was one of the first congressmen to call for the impeachment of Richard Nixon. Fr. Drinan was also a staunch opponent of the Vietnam war as well.

Fr. Drinan's views on the World War II internment were just as clear: he once noted during the CWRIC hearings in Washington D.C. that the whole episode was an injustice that "has been bothering the conscience of America."

Some Nikkei wonder if the news of the CWRIC's possible recommendations may have been intentionally "leaked out" as a means of gauging public reaction. That's probably unlikely, but if it is true, then some reaction has already developed from two of Los Angeles' newspapers. The Los Angeles Herald Examiner came out in support of reparations in an editorial Nov. 19, and the Los Angeles Times also urged redress in an editorial Nov. 22.

One could say that at least here in California, some momentum seems to be building—especially with the recent passages of ordinances granting reparations to fired Nikkei state and Los Angeles County employees. In Gardena, a 1942 resolution that called for the removal of Japanese aliens from the city was also rescinded recently by the Gardena City Council. Other counties and cities, such as Contra Costa and San Francisco, have also passed resolutions supporting redress.

But on the other hand, there are those who oppose reparations, even in the Nikkei community. Yo Takagaki, a Los Angeles real estate salesman, told the Rafu Shimpō that while the internment was an injustice, a lot of people "gave up things during the war." He added, "We gave up our freedom." He also noted that there is a Nikkei "silent majority" that opposes reparations.

And of course, the news of the CWRIC's possible recommendations also comes at a time when Ford Motor Co. and General Motors have shut down auto plants in California, due to the strength of "foreign" competition. Thousands of Californians have been added to the ranks of the unemployed (and it should be noted that there are some Nikkei auto workers who were affected as well). Although these events are totally unrelated to redress, there are those who unfortunately see a link between the two.

So perhaps one could say it is a time for cautious optimism. Still, regardless of what the CWRIC eventually recommends, the proponents of redress shouldn't "play it safe" by backing down or waiting for "the right political climate." They started the job and have gotten this far, and justice asks that they finish it.

The conscience of America is waiting. #

Holiday Issue Greetings

JACL Chapters are currently gathering Season's Greetings for the annual Holiday Issue. The same rate at \$7 per column inch applies to all Businesses, Professional People and Readers.

Deadline: Nov. 30

Or Send Them Directly to the Pacific Citizen. Thanks!

35 Years Ago

IN THE PACIFIC CITIZEN

NOVEMBER 22, 1947

Nov. 14—Federal Grand Jury at Los Angeles returns second indictment in case of Tomoya Kawakita for responsibility in death of U.S. marine in Japanese POW camp.

Nov. 14—JACL (MDC director Tats Kishida) represented at first national conference of local race relations groups at I-House on Univ. of Chicago campus.

Nov. 17—Rep. Emanuel Celler (D-N.Y.) introduces first bill permitting naturalization of all aliens, regardless of race, color or national origin.

Nov. 18—Nisei (John Tanaka of 442nd) joins Juneau Post 4, American Legion; believed first Nisei to join a veterans group in Alaska.

Nov. 18—Supreme Court grants U.S. Attorney General Tom Clark an hour to argue against restrictive housing covenants when case appears before bench sometime in December.

Nov. 22—Five Nisei survivors of Hiroshima A-bomb recall event as "great flash of lightning, followed by an earthquake—but there was no noise", San Francisco journalists told.

ABACUS

Continued from Front Page

for figuring out the change," said Kinya Egawa of the Teito Rapid Transit Authority. "Once you are accustomed to the abacus, it's very reliable," he said.

He and his colleagues used computer-aided calculators to issue long-term commuter tickets between various destinations over Tokyo's maze of crisscrossing subways.

But when it's time to hand over the change, he said he always used his abacus as a "double-check."

Takashi Ono of the Bank of Tokyo said almost half of the 6,000 workers there regularly finger their abacus beads—because it's faster than using electronic calculators.

Attachment to the abacus is deeply entrenched even in the nation's electronics industry—Koichi Ozaki, spokesman for Matsushita Electric, said numerical calculations in many clerical jobs are still done with the abacus. Workers at Matsushita, Japan's largest electric appliance enterprise, have organized a "soroban club" to keep their calculating skills honed.

"Parents and teachers consider the abacus the best means for children to learn math concepts," said Hiroshi Mizumura, chairman of the non-profit League for Soroban Education of Japan, Inc. "Most Japanese mothers are very enthusiastic about teaching their children to do simple addition and subtraction."

The league's 10,000 abacus teachers offer private courses in the ancient calculating art. Eleven of its members staff branch offices in California; Sao Paulo, Brazil, and San Rafael, Mexico, said Mizumura.

Michio Nanjo of the National Abacus Education Federation said 3.2 million students—most still in primary school—took the proficiency tests for the abacus last year.

Abacus training is part of the national school curriculum for third and fourth graders. And many of the 20 million children enrolled in the nation's 60,000 "juku"—special private schools to help children improve their studies—take classes to learn the abacus.

Some teachers say learning the abacus has other benefits.

"Children acquire traits of their own as they learn to use concentration and patience on the abacus," said Kunio Chii who has run a "soroban juku" here for 27 years.

She said it takes about two or three years to master the abacus, and daily practice is needed to sustain proficiency.

Abacus production remained stable at about 3 million units last year, said Hiroyuki Hayashi, a spokesman for the Banchu Abacus Cooperative in Ono City, western Japan.

INTRODUCING THE SANSEI SAMURAI



REDRESS

Continued from Front Page

He also felt that the \$25,000 figure is fair, since it is comparable to the sums that already have been paid to compensate American prisoners of war in Vietnam and war protesters found to have been illegally arrested during 1971 demonstrations.

Drinan said it is possible the CWRIC will recommend payment on a "per diem" (dollars per day of detention) basis or in some other way so that it may be impossible to calculate the total amount of compensation.

"They want to avoid headlines saying the commission has recommended \$1.5 billion," Drinan told the Times.

Personal Views

But Wrenn noted that Drinan's statements were probably his own "personal interpretations" of what the CWRIC may recommend. She added that even Angus MacBeth, executive director of the CWRIC, is "uncertain" as to what the commission report will say.

CWRIC Chairperson Joan Z. Bernstein could not be reached for comment, but her assistant, Katrina Shores, had told the Rafu Shimpō that the commission had been meeting monthly for the past three months to formulate a recommendation to Congress.

In Los Angeles, Alan Nishio, an administrator at CSU Long Beach and chairperson of the National Coalition for Redress/Reparations (NCRR), told the PC that although the Times' story reflected the views of only two commissioners, he was "cautiously pleased" to hear that at least some of the CWRIC members have positive feelings on the issue of redress.

While he was happy to know that the commission may be thinking in the direction of compensation for the Nikkei, he told the PC that NCRR couldn't offer any reaction until the CWRIC actually issues its findings and recommendations.

But Yo Takagaki, a Los Angeles real estate salesman, had a different point of view. He told the Rafu that Japanese Americans should not

accept the payments even if approved by Congress, a possibility he sees as unlikely.

"I want to make one thing clear," said Takagaki, "the evacuation was an injustice. As far as Congress approving payments of \$25,000 to each internee, I don't think they should and will approve such an idea."

Takagaki said it was his view that the majority of Nikkei is opposed to the concept of reparations for the WW2 camp experience.

"I say this because I've talked to a lot of people," he noted. "What is to be gained from it (the redress movement)? Most of the Issei have passed away, the Nisei are passing away... we should be talking about the future of the Sansei and the Yonsei."

"The best thing for the future is not to make a big hassle with the government. A lot of people gave up things during the war. We gave up our freedom," said Takagaki.

Herald Examiner Editorial

However, the Los Angeles Herald Examiner published an editorial Nov. 19 supporting monetary reparations for former internees, pointing out that even though there will be debate on the amount of compensation, "There ought to be no debate, however, on the principle involved. Compensation is not only due, it is long overdue."

In San Francisco, John Tateishi, director of JACL's National Committee for Redress, said the Times' story "caught him offguard" and he thought that the CWRIC was going to release its report in December. The JACL, however, did release a statement in reaction to the Times' story (see page 6).

The CWRIC was created by Congress in July 1980 to investigate the World War II evacuation and incarceration of Japanese Americans and Alaskan Aleuts.

The nine-member panel, in addition to Bernstein and Drinan, includes former U.S. Sen. Edward Brooke (R-Mass.), former U.S. Commissioner on Civil Rights chair Arthur S. Flemming, Fr. Ishmael Gromoff, Rep. Daniel Lungren (R-Cal.), former U.S.

Sen. Hugh B. Mitchell (D-Wa.), former Supreme Court Justice Arthur J. Goldberg and Philadelphia Court of Common Pleas Judge William H. Marutani.

Last year, the CWRIC held hearings in Washington, D.C., Los Angeles, San Francisco, Seattle, Chicago, New York, Boston, Anchorage and the Aleutian Islands, receiving testimony from over 750 witnesses, many of them survivors of the internment.

The CWRIC is expected to terminate on Dec. 31, but a request to extend the life of the commission into 1983 is pending in Congress, and it may be decided upon during the lame duck session which begins Nov. 29. #

U.S.-JAPAN

Continued from Front Page

the notorious "red purge" in the 1950s.

The Japanese also insist that high U.S. interest rates, which have strengthened the dollar against the yen and thus made Japanese imports cheaper, contribute far more to the trade imbalance than Japan's measures to protect its farmers and recession-hit industries such as aluminum, pulp and petrochemicals.

The war of words aside, "We must remind ourselves that U.S.-Japan trade relations are very large, very beneficial and getting better," the U.S. official said. With two-way trade of \$58 billion last year, Japan is America's biggest trading partner and largest export market outside of Canada.

"There is not a part of the United States which doesn't benefit from exports to Japan," he said.

"We thunder a great deal about beef and citrus," he said, but Japan last year bought \$6.6 billion worth of U.S. agriculture products. There are more acres in the United States devoted to feeding the Japanese than there are in all of Japan, he said.

Because Japan's major exports—electronic goods, precision instruments and video equipment—are in strong growth markets, in the short term, Japan will maintain a "natural surplus" in overall trade, he said.

But Japan must move quickly to remove all doubts about its openness, said Hosai Hyuga, chairman of Sumitomo Metal Industries and president of the Kansai (west Japan) Economic Federation.

Japan should carry out a "drastic expansion of quotas" in farm products, he told foreign reporters. With few resources of its own, Japan "can prosper only in a climate of free trade. We've got to show we are even more open than the United States or Europe." #



One Who Gave Comfort

Denver, Colo.

Some months ago Herbert V. Nicholson of Pasadena, Calif., sent me a copy of his paperback book, "Comfort All Who Mourn." I have been remiss in not acknowledging its receipt, and this is an effort to make amends.

The book is the story of the long and remarkable life of

IMMIGRATION Continued from Front Page

Labor's Equal Employment Opportunities Commission. Mazzoli commented:

"A lot worse discrimination, it seems to me, would be to have the Hispanics (undocumented workers) in the position they're in today—they have no rights, no citizenship, they can't organize, they can't ask for minimum wages, they can't fight back... I think that, to me, is a greatly more discriminatory position, than worrying about whether there is going to be some discrimination by an ID card (one of the provisions of the bill), about whether this (denial of) welfare payments (under the proposed law, legalized aliens would have to wait a few years for welfare or unemployment benefits) is right or wrong. A much worse thing is the status quo."

He added that the immigration bill is "offering the citizens of this country an opportunity to get behind a bill which does many things, including an essential justice to a group of people (illegal aliens) who for a long time have been tilling our fields, making our beds, doing our laundry and serving our meals, and making America a better country for it."

"But when it comes time to give out the goodies, they don't get any goodies," said Mazzoli. "We're going to give them the opportunity to become (U.S.) citizens."

'Make A Decision'

Mazzoli said that the Hispanic community has to "make a decision" as to whether or not they want to keep the undocumented worker situation the way it is now, or perhaps allow this bill to pass, giving the immigrants a chance at citizenship.

And while the high unemployment rate among U.S. citizens and the recent influx of refugees from Asia, Cuba and other countries may have been factors in the development of the bill (although refugees won't be affected), Mazzoli noted, "If we don't get this kind of bill, or something like it (passed) this year, then I think what we'll get (in the next session) is a bill that's going to be very harsh, very 'anti-entry', clanging the gate down and saying 'no' to everybody."

Mazzoli also tried to respond to some of the issues raised by growers, such as Harry Kubo of the Nisei Farmers League, who said the temporary guest worker program would turn employers into "policemen" and bog them down with paperwork. Kubo also felt that by the time workers were processed and approved, the grower's crops would be lost.

Attention to Farmers

Regarding the question of losing crops, Mazzoli said, "I can't say that won't happen" but noted that the bill does contain amendments which would give the farmers "quick attention."

"They don't have to file paperwork more than 50 days before the crop has been harvested. If they don't hear from the Labor Department within 20 days of the time the crop is to be harvested, they are automatically certified for the number of (temporary workers) they want," he said.

Mazzoli also pointed out that the bill's guest worker program has additional provisions which would allow farmers to get some kind of labor force—either unemployed citizens or available immigrants—in time to harvest their crops.

When asked by Johnston whether "big corporations" may have had any influence in the writing of the bill, Mazzoli said the critics who are saying that are "dead wrong." He said growers, Hispanic organizations, lobbyists and other groups all had input into the drafting of the bill.

Mazzoli admitted that the bill isn't "perfect" but it is "as well drafted as possible."

Don't Want to Hurt People

He also noted that both he and Simpson "didn't want to put together a bill that would wittingly or unwittingly hurt people."

Regarding the employer sanctions, Mazzoli said the bill calls for the Immigration and Naturalization Service to "shift the focus" away from the undocumented immigrant, who is simply working, and over to the employers who knowingly hire them, because they are the ones who profit from the whole situation.

Johnston questioned Mazzoli's "sincerity" toward the "poor people," or immigrants, to which the Congressman responded:

"I don't like the tone of your question... you're impugning me and I don't like it... When I said they're 'poor people' I mean they're poor people. They are put down by their employer, society—Al Simpson and I do not want to put them down further. We want to help them."

He added, "I think that the (Hispanic) community is really and inadvertently not helping them because (they) want the current situation, we think the current situation is a depravity."

When asked by the PC about the practicality of implementing the bill, Mazzoli said that the bill calls for the federal government to give states help in carrying out the law. For instance, the Labor Department will attempt to seek out workers from among U.S. citizens, and funds will be provided to carry out employer sanctions.

Improving INS Services

The INS, he noted, will also receive a considerable amount of money, not just to build up its Border Patrol, but also to encourage the INS to improve its services to those aliens who are becoming citizens.

Mazzoli pointed out that some of his congressional colleagues wanted an "easy bill" which would simply call for strengthening the INS Border Patrol. But both he and Simpson do not want a bill that simply asks the INS to put on their "jack boots" and patrol the borders.

Mazzoli admitted that the proposed legislation does have its problems, but it at least offers a "vast improvement over the current situation" involving the legal and illegal immigration of aliens to this country.

Mazzoli also feels that the bill has "balance" in that it calls for enforcement of immigration restrictions and employer sanctions, while also offering legalization of undocumented aliens already in the country.

As far as the chances for the bill passing in the House, Mazzoli said "it can be done."

service Nicholson shared with his wife, Madeline. Nicholson is 90 years young, and most of those years have been devoted in one way or another to working with the Japanese and Japanese Americans. Togo Tanaka writes in the foreword:

"I wish that I could remember exactly when and where I first met Herbert Nicholson. It seems I have known him all my life. But I know it was sometime during the chaotic and turbulent years of World War II. The memory is clearest about what he did at Manzanar War Relocation Center. There I saw him bring joy where there was sadness, hope where there was despair, and love where there was hate. He brought these gifts to us as we struggled for dignity behind barbed wire and watchtower... From the depths of those years when hope was slender indeed, when the entire globe was aflame with bloodshed and violence, the Nicholsons came into the desert to remind us of the healing power of faith and love..."

* * *

Nicholson was a student at Haverford College, a Quaker school, in 1915 when he came under the spell of Evangelist Billy Sunday. At age 23 he volunteered to go to Japan as a missionary. There he met Madeline Waterhouse, another missionary, four years his senior, and they were married in 1920.

The Nicholsons left Japan in 1939. The police were harassing their Japanese associates and, because of the U.S. depression, funds to support overseas missions

EAST WIND: by Bill Marutani



Sufferance

Philadelphia

WITHIN SOME QUARTERS or segments of our society, there are those who arrogate to themselves the position and power to declare and to determine which minorities are to be viewed as Americans, on what conditions, and for how long. Of course, this very concept itself is totally antithetical to our great democracy, but such unAmericanism does not trouble or deter those who seek to operate under a superior-inferior relationship. And the Nikkei, being a minority, are very much subjected to this perverted approach to Americanism. It is presupposed that we are Americans only at the sufferance of the majority; that we should be bestowed the rights and privileges of being an American only at the sufferance of others; that there are gradations of the quality of being an American, and the Nikkei, although a purported "model minority," are not quite there.

Well, I don't buy that. Were it otherwise, were I to accept this demeaning concept, I would be chargeable with complicity in promoting and perpetuating this poisonous falsehood—thereby not only damaging myself but, more importantly, eroding the very fabric of our social order which holds us, all Americans, together. In strength.

THIS IS NOT to suggest, even for a moment, that the real world is something other than that outlined above; or that our senses are so intoxicated with idealism that we are oblivious to reality. Not so. However, what we are suggesting is that the Nikkei, or any minority for that matter, should and must adhere to the principle that (s)he is an American. Period. And never forget that.

BUT, ALAS, all too often we find that the Nikkei, consciously or unconsciously, cooperates in the superior-inferior concept. Willingly and interminably. For example, as we have had occasion to mention before in this column, some Nikkei use the noble term "American" as a synonym for "white," thereby excluding all others. Including themselves. Tragic. Some of us have invisible, undefined "borders" beyond which we presuppose that we should not traverse, thereby ghetto-izing ourselves, thereby limiting our roles and our potentials to that supposedly assigned to us. We repeat: tragic.

WE DO NOT seek to generate antagonism, even though these words may be upsetting to some. Nor do we seek to promote despondency or even a note of hopelessness. On the contrary, there is much hope, much pro-

were drying up. Back in the States, Nicholson was asked to take over temporarily as pastor of the West Los Angeles Japanese Methodist Church. When war came, ironically it was the American gendarmes who harassed him.

After the Evacuation Nicholson became a truck driver of sorts. He shuttled between the camps and the former homes of the evacuees, delivering furniture and other household items requested by the owners. Sometimes he picked up and delivered cars to families that had relocated.

One such mission brought him to the Denver area where a sheriff's deputy broke into his motel room and hauled him off to jail as a spy suspect.

Nicholson tells of visiting Assistant Secretary of War John J. McCloy in the Pentagon to urge that the West Coast be reopened to Japanese Americans after the Nisei began to be drafted in 1944. Nicholson writes that McCloy agreed Japanese Americans should be permitted to go home, but cited hostile public opinion as a deterrent. He quotes McCloy: "Now if you can fill this basket on my desk with letters wanting the Japanese to return, we'll open the camps."

Nicholson says he was instrumental in getting a letter-writing campaign under way and "within four months some 150,000 letters reached McCloy in Washington. He wrote to the Friends of the American Way to say that Washington was satisfied that public opinion favored the return of the Japanese."

After the surrender Nicholson, with the help of Sim Togasaki among others, escorted a shipload of goats to Okinawa to provide the people there with a source of milk and meat.

There is much more, of course, to the Nicholson saga. It is a story sparsely told; in the hands of a skilled writer it could become a book that would reach the wide audience it deserves. #

mise. As starters, we point to the fact that the vast majority of our fellow-Americans are people of goodwill, conscientious and fair. The potential is there if only we set aside our own mental and psychological bonds.

WITH A CHANGE of attitude on our part, the millennium will not arrive tomorrow, or even in our lifetime. It will continue to be a struggle of facing innuendoes, at times snide remarks, not gaining the recognition in employment which one may richly deserve. Just the other day, a little old lady peered up at me at a store check-out counter and demanded, "Where are you from?" (My reply: "Philadelphia." She was taken completely aback.)

Be that as it may, we've got to start somewhere, sometime. And, as they say, now is as good a time as any.

Ed. Note: Judge William Marutani was recently named to the new Citizens Commission on Civil Rights, which was established by former U.S. Civil Rights Commission chair Arthur S. Flemming. The new commission focuses on such issues as bus-

ing, abortion and powers of the courts. #

LOW-COST AUTO LOANS

currently at 15%

INSURED SAVINGS

currently paying 7%, insured to any amount

IRA ACCOUNTS

now available

FREE SAVINGS INSURANCE

up to \$4,000

FREE LOAN PROTECTION INSURANCE

pays loan in full in the event of death

Now over \$5 million in assets

NATIONAL JAEL CREDIT UNION

PO 1721 Salt Lake City, Utah 84110 (801) 355-8040

National JACL's Repsonse to L.A. Times' Story:

On CWRIC Report:
A Statement

San Francisco

While it appears that the views expressed in the Los Angeles Times article are the personal interpretations of one commissioner, we are encouraged to know that the CWRIC is directing its deliberations towards the concept of individual compensation.

The JACL maintains the position that individuals have a right to substantial compensation as victims of the World War II incarceration, but we also seek the establishment of a community trust which will serve to heal the wounds resulting from the total dislocation of the community in 1942.

In regards to the \$25,000 being quoted we do not accept the notion that three years of internment without just cause and/or benefit of due process of law can be rectified by such an amount, although we have not concluded our thinking on this particular matter.

Once we review the formal CWRIC report and recommendations, we will begin drafting legislation early next year which we feel will fairly compensate those individuals who were forcibly removed from their homes and interned during the war. It is possible that our figure may exceed \$25,000.

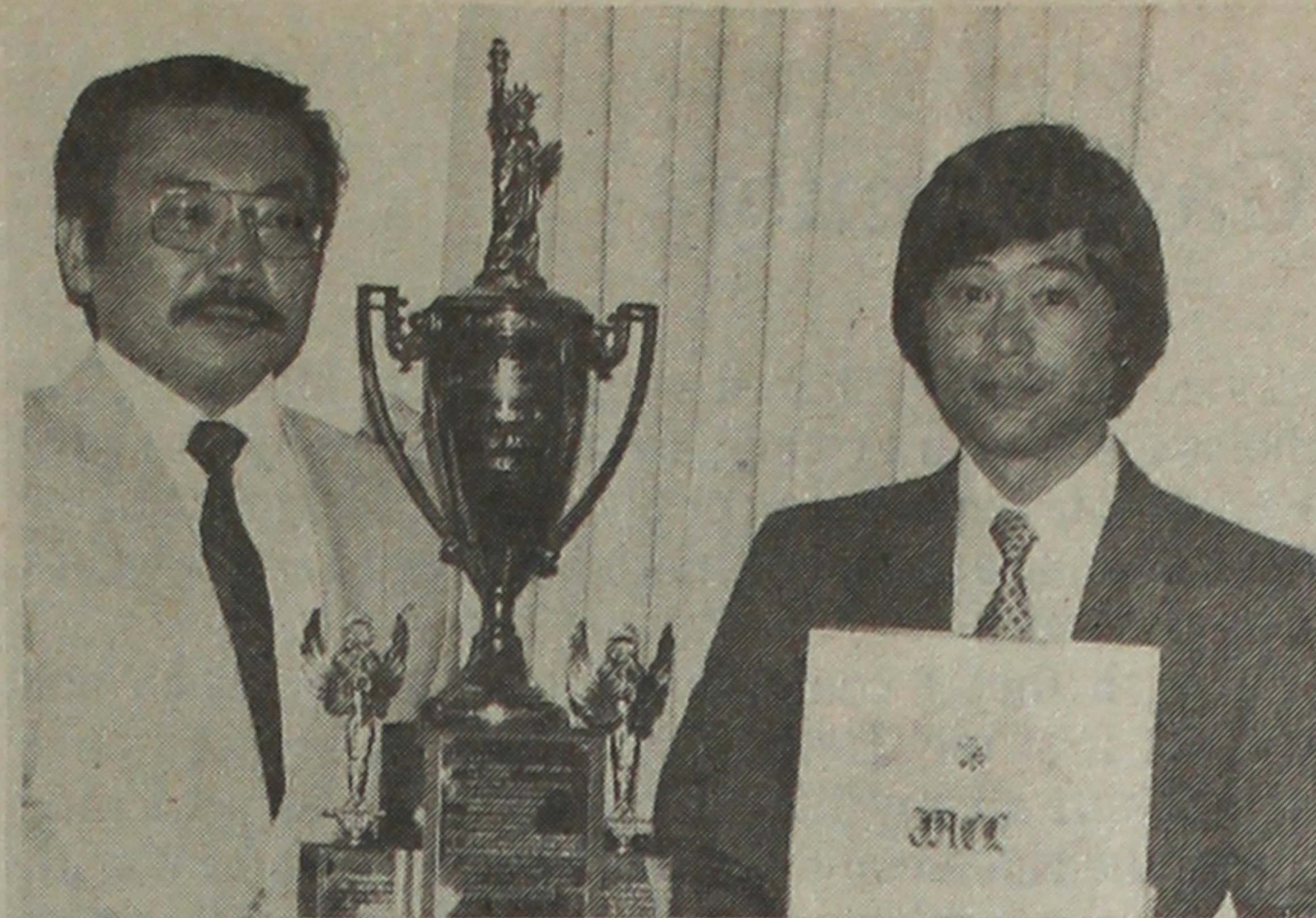
Min Yasui, chairman of the JACL National Committee for Redress, was contacted en route to Nevada and he stated that he was "encouraged" by the Times' report and added:

"It is our hope that the CWRIC does in fact recommend to Congress and the Administration that the individuals who were victimized by the internment are adequately compensated. Only then can an injustice of 40 years past be fully put to rest."

West Valley JACL sets installation

SAN JOSE, Ca.—The West Valley JACL Chapter will install its officers and directors for the 1983 year on Friday, Jan. 14 at the Sunnyvale Hilton Hotel, 1250 Lakeside Drive, Sunnyvale. The evening's events begin with a no-host cocktail at 6:30, followed by dinner at 7:30.

The evening's keynote speaker will be Ron Wakabayashi, National Director. Cost is \$15.00 per person and tickets may be purchased from chapter officers, directors or dinner chairman Jim Sakamoto. (408) 252-5972.



PC Photo by Peter Imamura

PSWDC HONORED—JACL Pacific Southwest Regional Director John Saito (left) and PSWDC Governor Cary Nishimoto accept the Community Relations Conference of Southern California's Membership Trophy and a commendation from Mayor Tom Bradley for human and civil rights services to the community. The district was honored at the CRCSC's 37th Anniversary Dinner held Nov. 14 at the University of Southern California's Town and Gown.

Mineta keynotes Chicago dinner

CHICAGO—Rep. Norman Y. Mineta of San Jose, Ca. will be the keynote speaker for the 1982 Chicago JACL Chapter Inaugural at the Radisson Ho-

tel on Saturday, Dec. 4, beginning at 6 p.m.

After the dinner and installation of officers, the chapter will honor Lincoln Shimidzu for his many contributions to the Japanese American community. Shimidzu has served as past president of the Chicago JACL; Board Chairman of the Japanese American Service Committee from 1966-72; and chairman of the JACL Federal Credit Union from 1957-61.

He is currently president of the credit union and a member of the Twenty and Five Investors, Enterprisers, Chicago Lakers, and the Japanese American Council.

HOLIDAY ISSUE'S
1000 CLUB
HONOR ROLL

The annual 1000 Club Honor Roll for 1982 is scheduled for the Holiday Issue, Dec. 24-31, restoring the list from a mid-January release to the popular year-end edition. Accordingly, 1000 Clubbers (Century, Corporate and Life members) as of Nov. 30 will be listed.

Sansei named Contra Costa pres.

EL CERRITO, Ca.—For the first time in the history of the Contra Costa JACL Chapter a Sansei was elected president. Fred Takemiya, an attorney here, was unanimously elected at the chapter's board meeting held Nov. 5.

Other officers include Jack Imada, 1st vp/prog; Natsuko Irei, 2nd vp/memb; Yoshiro Tokiwa, treas; Maria Hirano, rec sec; William Nakatani, cor sec; Esther Takeuchi, publ; Yas Aoki, Tom Arima, Raymond Fujii, Akiko Helwig, Ernie Iyama, William Nakatani, Walter Oishi, Frank M. Orni, John Shinagawa, Don Uesugi, bd. membs.

The chapter will hold its Appreciation Dinner on Dec. 3, 7:30 p.m. at the Golden Dynasty Restaurant, 10140 San Pablo Ave. The installation of the new officers will take place Jan. 29, 1983, 6 p.m. at the Windsor Court of the His Lordship Restaurant, Berkeley Marina. Chester Tanaka, author of "Go For Broke" will be guest speaker.

S.F. JACL names officers for '83

SAN FRANCISCO—Greg Marutani was named the 1983 president of the San Francisco JACL Chapter during the board's dinner meeting held Nov. 9 at the Nikko Suki-yaki. He succeeds Hisashi Takiguchi, who has held the post for the past two years.

Other officers elected were Naomi Yamaguchi, vp/prog; Vicky Mihara, vp/memb; Carole Hayashino, vp/publ; Beth Renge, treas; Louise Koike, rec sec; Yasuo Abiko, del; Yo Hironaka, Cressey Nakagawa, Arthur Nonomura, Frank Minami, Dr. Hiroshi Arima, Lorraine Bannai, Wes Doi,

Bill Kyono, Russell Matsumoto, Hiroshi Tokubo, Jan Yanehiro, bd. membs.

Marina JACL sets
Christmas party

MARINA DEL REY, Ca.—The Marina JACL will hold a combined Christmas Party and Installation Dinner at Kelbo's in West Los Angeles on Dec. 19. For reservations call Ed Goka (213) 376-4243; Fred Fujioka 726-3291, Annabelle Lee 294-5811 or Akimi Kodama 822-55-28.

SHORT & SMALL
MEN'S APPAREL

We at KEN & CO. are now featuring our new line of shoes & shirts by...
FRENCH-SHRINER, NUNN-BUSH
Sizes: 5-9 M & E widths
JOHN HENRY, OSCAR DE LA RENTA
Sizes: 14-16½ neck, 30 & 31 sleeves

101 SF
17 Oak
SAN JOSE
280 SJ
KEN & CO.
Hamilton Ave.
Darryl Dr.
CAMPBELL
17 Santa Cruz
(408) 374-1466
785 W. Hamilton Ave., Campbell

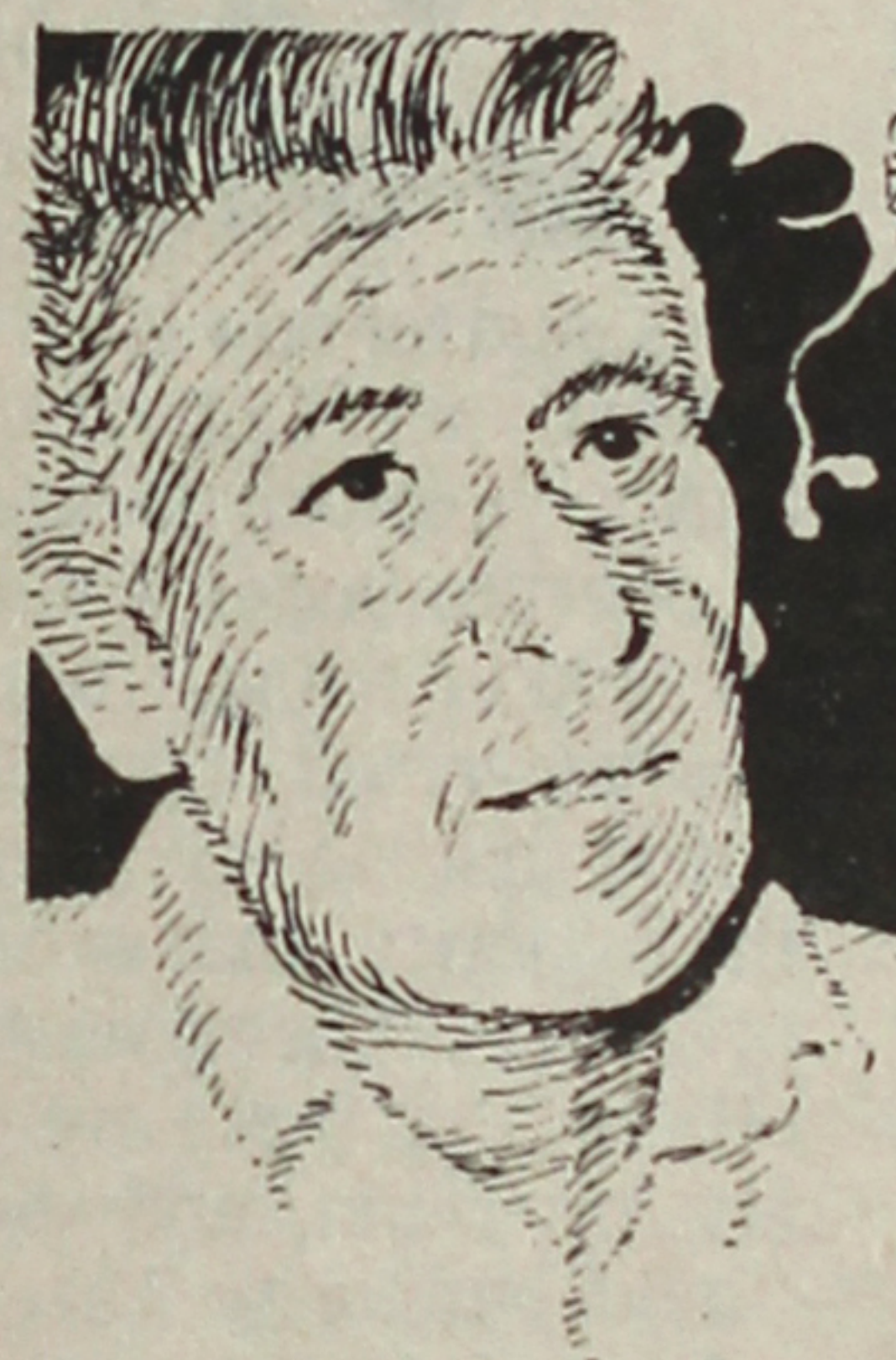
KEN & COMPANY
clothing merchantsKen Uyeda owner
GIVENCHY/LANVIN
ST. RAPHAELDo YOU
want your
day in court?

The National Council for Japanese American Redress will initiate a class action lawsuit against the United States on behalf of all victims of America's World War II concentration camps. Our initiative is quite independent of others, including JACL's which are mainly legislative. We have conducted two years of historical research, perhaps the most extensive ever, in the National Archives and elsewhere. We have retained a top Washington law firm to represent the class.

We are moving towards filing suit. A brief has been written which details a comprehensive set of factual allegations and twenty causes of action. We fully realize that this is a high-risk venture, but not an impossible one. Around six hundred supporters have joined us, including twenty-two Ronin contributors of one thousand dollars each.

Won't you join us?

National Council
for Japanese American Redress



"Our's is a nation of law. Our community obeyed the evacuation order even though we knew it was an injustice and caused much harm. Redress is one of the ways some justice can be done."

Ralph Lazo — a Ronin *

* After the famous story Chushingura, of the Forty-seven Ronin we seek forty-seven persons who will contribute \$1,000 in order to make this suit possible.

please make your tax-deductible contribution payable to:

Redress Legal Fund
925 West Diversey Parkway
Chicago, Illinois 60614

- ☐ \$1,000 as a Ronin.
- ☐ \$100 and my hope that hundreds more will follow.
- ☐ \$25 and my best wishes.
- ☐ Please send information on your activities.

Name _____
Address _____
City _____ state _____ zip _____

All contributors will receive our newsletter.

Nationwide Business-Professional Directory

Yo...ss card place in each issue here for 25 weeks at \$25 per three lines. Each ac...ar line at \$6 per 25-week period. Larger (14 pt.) typeface counts as two lines.

Greater Los Angeles

Asahi Travel

Supersavers/Group Discounts/Apex
Fares/Computerized/Bonded
1111 W Olympic Blvd., LA 90015
623-6125/29 • Call Joe or Gladys

FLOWER VIEW GARDENS #2

New Otani Hotel, 110 S Los Angeles
Los Angeles 90012 Art Ito Jr
Citywide Delivery (213) 620-0808

Nisei Travel

1344 W 155th St, Gardena 90247
(213) 327-5110

SAISHO-SEVEN / Room & Board
LOS ANGELES, CALIF.
733-9586

CUSTOM MADE FUTON

(213) 243-2754
SUZUKI FUTON MFG.

TOKYO TRAVEL SERVICE

530 W. 6th St. #429
Los Angeles 90014 680-3545

Travel Guild

404 S. Figueroa St., Level 6
Los Angeles 90071/(213) 624-1041

YAMATO TRAVEL BUREAU

321 E 2nd St., #505
Los Angeles 90012 624-6021

Orange County

Executive-Realtors®

VICTOR A KATO
Investments - Exchanges - Residential
8780 Warner Ave., Suite 9
Fountain Valley, CA 92708
Bus. (714) 848-4343 res. (714) 962-7447

THE PAINT SHOPPE

LaMancha Center, 1111 N Harbor
Fullerton, Ca / 714-526-0116

San Diego

PAUL H. HOSHI

Insurance Service
852-16th St (714) 234-0376
San Diego 92101 res. 264-2551

Ventura County

CALVIN MATSUI REALTY

Homes & Commercial
371 N. Mobil Ave, Suite 7, Camarillo
(805) 987-5800

Monterey Peninsula

RANDY SATOW REALTOR

"GOLF CAPITAL OF THE WORLD"
Pebble Bch, Carmel, Monterey Peninsula
Ocean Front Homes, Condos, Investments
YOSHIO R. SATOW -- (408) 372-6757

Established 1936

Nisei Trading

Appliances - TV - Furniture

NEW ADDRESS:

249 S. San Pedro St.
Los Angeles, CA 90012
(213) 624-6601

MIKAWAYA SWEET SHOPS

244 E. 1st St., Los Angeles
(213) 628-4945

2801 W. Ball Rd., Anaheim
(714) 995-6632

Pacific Square, Gardena
1630 Redondo Beach Blvd.
(213) 538-9389

118 Japanese Village Plaza
Los Angeles / (213) 624-1681

Kono Hawaii

•POLYNESIAN ROOM
(Dinner & Cocktails - Floor Show)

•COCKTAIL
LOUNGE
Entertainment

•TEA HOUSE
Tep-pan & Sukiyaki

OPEN EVERY DAY
Luncheon 11:30 - 2:00
Dinner 5:00 - 11:00
Sunday 12:00 - 11:00

226 S. Harbor Blvd.
Santa Ana, Ca 92704
(714) 775-7727

San Jose

Kayo K. Kikuchi, Realtor

SAN JOSE REALTY
996 Minnesota Ave., #100
San Jose, CA 95125-2493
(408) 275-1111 or 296-2059

Tatsuko "Tatty" Kikuchi

General Insurance Broker, DBA

Kikuchi Insurance Agy.

996 Minnesota Ave., #102
San Jose, CA 95125-2493
(408) 294-2622 or 296-2059

EDWARD T. MORIOKA, Realtor

580 N. 5th St., San Jose
(408) 998-8334/5 res. 371-0442

Watsonville

Tom Nakase Realty

Acreage, Ranches, Homes, Income
TOM NAKASE, Realtor
25 Clifford Ave. (408) 724-6477

San Francisco

ASUKA Japanese Antiques

Wholesale -- Retail
25A Tamalpais Av., San Anselmo CA 94960
(415) 459-4026 Juli (Yorichi) Kodani

DŌBŌ COUNSELING CENTER

Experienced Nikkei Counselors
Low Cost -- Confidential
(415) 522-5243 or 843-843-6933

Sacramento

SHARON NODA, COOK REALTY

Fine Older Homes/Quality Newer Homes
(916) 443-6702 or 739-1068

Seattle, Wa.

Imperial Lanes

Complete Pro Shop, Restaurant, Lounge
2101-22nd Ave So. (206) 325-2525

KINOMOTO TRAVEL SERVICE

FRANK KINOMOTO
507 S King St. (206) 622-2342

The Intermountain

Mam Wakasugi

Sales Rep, Row Crop Farms
Blackaby Real Estate, Rt 2 Bx 658, Ontario,
Or 97914 / (503) 881-1301, 262-3459

The Midwest

SUGANO TRAVEL SERVICE

17 E Ohio St, Chicago 60611
(312) 944-5444 784-8517, eve, Sun

Washington, D.C.

MIKE MASAOKA ASSOCIATES

Consultants - Washington Matters
900-17th St NW, Washington, DC 20006
202-296-4484

Commercial & Industrial

Air Conditioning & Refrigeration
CONTRACTOR

Sam J. Umemoto

Lic. #208863 C-20-38

SAM REIBOW CO.

1506 W. Vernon Ave.
Los Angeles / 295-5204
Experienced Since 1939

Los Angeles Japanese

Casualty Insurance Assn.
COMPLETE INSURANCE PROTECTION

Aihara Insurance Agy. Inc.

250 E. 1st St., Los Angeles 90012
Suite 900 626-9625

Anson T. Fujioka Insurance

321 E. 2nd St., Los Angeles 90012
Suite 500 626-4394

Funakoshi Ins. Agency, Inc.

321 E. 2nd St., Los Angeles 90012
Suite 300 626-5275

Inouye Insurance Agency

15029 Sylvanwood Ave.
Norwalk, CA 90650 864-5774

Itano & Kagawa, Inc.

321 E. 2nd St., Los Angeles 90012
Suite 301 624-0758

Ito Insurance Agency, Inc.

1245 E. Walnut St, Suite 112
Pasadena 91106; 795-7059, 681-4411

Kamiya Ins. Agency, Inc.

327 E. 2nd St., Los Angeles 90012
Suite 224 626-8135

The J. Morey Company

11080 Artesia Blvd, Suite F, Cerritos, CA
90701; (213) 924-3494, (714) 952-2154

Sato Insurance Agency

366 E. 1st St., Los Angeles 90012
626-5861 629-1425

Tsuneishi Insurance Agency, Inc.

327 E. 2nd St., Los Angeles 90012
Suite 221 628-1365

Wada Asato Associates, Inc.

16520 S. Western Ave, Gardena 90247
(213) 516-0110

ORDER FOR CHRISTMAS

Recipes to Share

287 pages - 616 recipes

Calvary Presbyterian Church
Stockton, California

Donation: \$6.50 + \$1.50 postage-handling

Send to: Calvary Presbyterian Church Cookbook Committee

1239 S. Monroe, Stockton, CA 95206

State of Utah

Invites your bid on the following 91.9 acres of undeveloped farmland. This property zones for agricultural useage is located west of 1400 No. Mountain Road, Ogden, Utah.

MINIMUM ACCEPTABLE BID
\$10,000 PER ACRE

The State shall provide financing to those successful bidders with excellent credit.

All bids must be received in room 147 of the State Capitol Bldg. no later than 10:30 a.m. on Tues., Dec. 14, 1982.

FOR FURTHER INFORMATION CONTACT:

Charles Davies (801) 533-7025

or

John Miller (801) 393-8651

ED SATO

PLUMBING AND HEATING
Remodel and Repairs
Water Heaters, Garbage Disposals
Furnaces

Servicing Los Angeles
293-7000 733-0557

PAUL'S KITCHEN

Chinese Cuisine, Cocktails
Banquet Facilities, Food to Go
Open Daily - (213) 724-1855
1950 S. Atlantic Blvd., M.P.

Gardena Carpet & Linoleum Co.

Carpets, Draperies, Linoleum,
Vinyl Floor Tile, Hardwood
DAVE ULRICH
15407 S. Western Ave, Gardena
327-2919
401 S. Pac. Coast Hwy., Rdn do Bch
540-0811 372-6603

C.H. Escrow Co., Inc.

CLAIRE HESTER

425 So. Fairfax Ave.
Los Angeles, CA 90036
(213) 930-1505

AT NEW LOCATION

Aloha Plumbing

Lic. #201875 -- Since 1922
PARTS - SUPPLIES - REPAIR
777 Junipero Serra Dr.
San Gabriel, Ca 91776
(213) 283-0018

MARUKYO Kimono Store

New Otani Hotel &
Garden-Arcade 11
110 S. Los Angeles
Los Angeles
628-4369

Kimura

PHOTOMART

Cameras & Photographic Supplies
316 E. 2nd St., Los Angeles
(213) 622-3968

Taco Bell

Best Fast Food
in San Gabriel Valley

237 S. Azusa 969-2312
Azusa, Cal.

Broaster Kitchen

"Our Food Is Cooked to Order"
GERRY & BERNIE MONROE
Owners

1440 W. Beverly Blvd.
Montebello, CA 722-4190

Chevron

Stan's Chevron SERVICE

Complete Automotive Service
Atlas Tires - Battery Specialist
20860 Sherman Way
at Desoto
Canoga Park, CA 91306
(213) 716-1269
Stan Cook, Chevron Dealer

De Panache

Today's Classic Looks
for Women & Men

Call for Appointments
Phone 687-0387
105 Japanese Village Plaza Mall
Los Angeles 90012
Toshi Otsu, Prop.

Koby's Appliances

15120 S. Western Ave.
Gardena 324-6444 321-2123

CHIYO'S

Japanese Bunka Needlecraft
Framing, Bunka Kits, Lessons, Gifts

(714) 995-2432
2943 W. Ball Rd, Anaheim, Ca 92804
(213) 617-0106
450 E. 2nd St., Honda Plaza
Los Angeles, CA 90012

CLASSIFIED ADS

Classified rate is 12¢ a word, \$3 minimum per issue. Payment with order.

BUSINESS OPPORTUNITY (Calif.) 03

OPPORTUNITY FOR Landscapers
Upcoming community of Cameron Park.
Sell or lease commercial acre with retail
nursery facilities and large wine cellar.
(415) 964-5217.

BUS OPPORTUNITY (Kansas) 03

HOTEL
in Blue Sky Country
23 Units w/3 apts & cafe. Includes nearby
bar. Wonderful family business in great
living area, 95 miles So. of Dodge City, KA.
Sale due to illness. So good opportunity at
\$85K down on \$150K or \$135K Cash.
(316) 544-4554.

REAL ESTATE (Calif) 09

SURVIVAL & INCOME
LAKES, RIVERS,
MOUNTAINS
4 8/10 ACRES 4 acs. in Thompson
vines, 7 1/4 HP pump, access
to ditchwater, approx. 1 acre w/
1420 s.f. ranch style hme, 3br, 1
ba, w-w crpt, drps, frplc, sunken
tub etc. 400 s.f. workshop, 175
s.f. greenhouse, doghouse & run.
Profess'ly ldsdcp, 500 gal. tank.
Comes compl. w/like new Mas-
sey Ferguson trctr \$165,000.
(209) 896-1406, (209) 294-1131.

SAFE AND BEAUTIFUL, spectacular

Los Osos, Morro Bay, Calif.
View, some quality, gorgeous 3 bedroom
two bath, oceanfront home on perfect site.
Have fantastic rock fireplace and real cedar
ceilings and great redwood decking. Asking
140K.
Call 805: 528-2377

REAL ESTATE (Miss.) 09

HOME-SURVIVAL-INCOME
100 acres merchantable Timber. Small
clearing around old house on beautiful
site. Property served by small stream from
year-around spring. Excellent water from
shallow wells. Spectacular area 35 miles
No. of famous Natchez, Miss. Genuine
bargain \$2,500/acre, Firm 601-639-4842.

Three Generations of Experience

FUKUI
Mortuary, Inc.
707 E. Temple St.
Los Angeles, CA 90012
626-0441
Gerald Fukui, President
Nobuo Osumi, Counsellor

REAL ESTATE (Okla.) 09

"GIANT SURVIVAL"
MASSIVE WILDERNESS—1500 acres.
Sub-divided in 5 acre tracts with roads.
Location Kiamichi Wilderness, south-
eastern Oklahoma. Over 8,000 acres sold
by Kiamichi Wilderness, Inc. Price
\$900,000. Owner will finance. Property
has retail volume of over \$2,200,000. Multi
family buyers o.k. Call 817-498-4190.

REAL ESTATE (Tex.) 09

"J.R." WOULD LIKE THIS!—TEXAS SUR-
VIVAL on famous Brazos River. 818 ac only
3 hrs. from Dallas. Quail, deer & turkey. 4
automatic game feeder, 2 portable deer
stands. 250 ac cultivated. 300 ideally suited
for coastal spring. 30 acres in coastal. 18
ac lake w/channel catfish & blue gill. An-
other 20 acre pond now drained but can be
stocked in the spring. Also, 3 stock ponds,
windmill, well water for 2 homes, good cor-
ral, 2 stock tanks, large metal barn w/con-
crete floor. House is 2 BR, Stucco. Land
value always increasing. Ask \$430K. Call
(817) 888-2372.

REAL ESTATE (Utah) 09

UTAH: BEAUTIFUL — BEAUTIFUL! 4 Br
2 1/2 Bath in gorgeous valley only 20 miles
So. of S. Lake City, Utah. Mountain vistas.
Trees plus running stream on property.
Potential 3 more Br & Bath or survival
center in full basement. Area known for
quality of life. Ask \$159K. Negotiate Cash
or terms.
801-756-2635

REAL ESTATE (Wash.) 09

"SURVIVAL!"
3 BR-Bath w/ Bomb Shelter on 2 acres in
Valley by 7000 ft. Mt. Great seclusion in
trees near river. Producing fruit trees, giant
garden & pure well water. Has 24'x24' metal
shop w/concrete floor. Elec or stove
heat. Fenced w/locked gate. Rare find
\$89K. Call (206) 436-1779.

SURVIVAL & FACILITIES
BEAUTIFUL WOODED 16 acres.
Near Olympia, WA, and college,
golf, shopping-services. Via main
hiway. City water available plus
wells. Very rare property at
\$180K. Call (206) 943-9676

Shimatsu, Ogata and Kubota Mortuary

911 Venice Blvd.
Los Angeles
749-1449

SEIJI DUKE OGATA
R. YUTAKA KUBOTA



EAGLE PRODUCE CO.

Division of Kittys Vegetable Distributors, Inc.

BONDED COMMISSION MERCHANTS WHOLESALE FRUITS AND VEGETABLE

929-943 S. San Pedro St.
CITY MARKET
Los Angeles, Ca. 90015
Phone: (213) 625-2101



Plaza Gift Center

FINE JEWELRY - CAMERA - VIDEO SYSTEM
WATCHES - PEN

West L.A. installs Charles Inatomi

LOS ANGELES—Over 50 new officers, led by 1983 chapter president Charles Inatomi, were sworn into office Nov. 13 by PSW Regional Director John J. Saito at the West Los Angeles JACL installation dinner held at Airport Travelodge. As the district's biggest chapter with over 1,300 members, its executive board is comprised of 20 officers, 15 board members, 8 scholarship committee members, 5 Auxiliary officers, 4 in Earth Science Section and 6 Sansei Club officers.

Dinner speaker Akemi Kikumura, Ph.D., anthropologist and author, observing the continuum of Japanese heritage in America, pointed to the Nikkei ability of cooperation, working together and supporting each other, by which the Issei practiced to survive. Exploring new areas and expanding on ideas were values passed on by the Issei immigration generation, she said. And Sansei are placing greater emphasis on these values than their parent Nisei, she added.

The chapter recognized Bill Sakurai, outgoing two-term West Los Angeles JACL president, with the Chapter Service Award of the Year for his two decades of work with youth and community; Ben Yamanaka, JACL silver pin; and Steve Yagi, most members signed in '82. Ann Takata and Edith Kaneshiro were named recipients of the 1983 Presidential Classroom for Young American awards.

Also speaking were Harry Kajihara, PSWDC redress chair; Gwen Hamamoto, a 1982 PCYA-er, and Debbie Oishi, Miss West L.A. JACL in the Nisei Week Festival. Over 150 attended.

1983 Officers

FRESNO AMERICAN LOYALTY LEAGUE (JACL)—Deborah Shikami, pres; Henry Kazato, vp (memb); Franklin Eng, vp (activ); Sachi Yagyu, sec; Ken Yokota, treas; Peggy Liggett, del;

Richard Berman, 1000 Club; bd memb—Fred Hirasuna, Rev. William Kobayashi, Lou Miyamoto, Mo Nakamoto, Hisao Shimada, June Toshiyuki.

WEST LOS ANGELES JACL

Charles Inatomi, pres; Fred Miyata, 1st vp; Toy Kanegai, 2nd vp; Bill Sakurai, 3rd vp; Charlie Nishikawa, 4th vp; Jean Ushijima, rec sec; Ron Kumataka, cor sec; Roy Takeda, treas; Sid Yamazaki, pub; Yuki Sakurai, hist; Mary Ishizuka, legis; Jack Nomura, leg counsel; Arnold Maeda, insur; Veronica Ohara, comm sv; Haru Nakata, Amy Nakashima, recog; Shig Takeshita, 1000 Club; George Kanegai, travel; Walt Isono, nomin; Yuki Sato, hospitality.

Bd Mem—Helen Eto, Dr Robert Funke, Peggy Hoshizaki, Jiro Mochizuki, A Nakashima, Satoshi Nitta, Himeji Sakaniwa, Sho Shimotsu, Sam Takahashi, Tak Nabe, Kiyo Teramaye, Virginia Tominaga, Elmer Uchida, Steve Yagi, Emily Yamanaka.

Scholarship Committee: 1983—C Inatomi, J Ushijima; '84—S Nitta, Ben Yamanaka; '85—Jim Nakabara, W Isono; '86—K Teramaye, S Yagi.

Auxiliary: Virginia Tominaga, pres; T Kanegai, vp; Chieko Inouye, sec; A Nakashima, treas; Stella Kishi, pub-hist.

Earth Science Section: Henry Nagae, pres; S Nitta, treas; Irene Yokota, sec; Marian Susuki, Sunshine Girl.

WLA Sansei JACL: Paul Suye-tsugu, pres; Ron Sakurai, 1s vp; Bobby Oku, 2nd vp; Connie Sakurai, sec; Judy Kamikihara, treas; Imogene Ota, pub-hist.

1000 Club Roll

(Year of Membership Indicated)
* Century; ** Corporate;

L Life; M Mem; C/L Century Life

SUMMARY (Since Dec. 31, 1981)

Active (previous total) 1,892

Current total 1,979

NOV 1-5, 1982 (50)

Arizona: 11-Sueo Murakami.

Berkeley: 4-Chie Kondo, 6-Martha M Tsutsui.

Boise Valley: 9-Harry Hamada.

Chicago: 22-Fred Y Tsuji, 21-Henry Ushijima*, 28-Nobi Yamakoshi.

Cleveland: 27-Toshi Kadowaki, 22-John Ochi.

Downtown Los Angeles: 20-Ben Tsuchiya, 22-Takito Yamaguchi*.

East Los Angeles: 21-Hideo Katayama, 26-Frank S Okamoto, 27-George Watanabe.

Fowler: 24-Harley M Nakamura, 26-Judge Mikio Uchiyama.

Fresno: 24-Dr Otto H Suda.

Gardena: 5-Ken Hokoyama.

Long Beach/Pacific: 17-Jeffrey Y Matsui.

Marysville: 23-Bob H Inouye.

Milwaukee: 28-Shigeru Nakahira.

Monterey Peninsula: 19-Mickey N Ichiuji.

Orange County: 22-S Douglas Arakawa, 31-Harry H Matsukane, 29-Ken Uye-sugi.

Placer County: 21-Kunio Okusu.

Portland: 18-Dr Albert A Oyama, 21-William Y Sakai*, 18-Dr James M Tsugawa.

Progressive Westside: 34-John Ty Saito, 19-Toshiko S Yoshida.

Puallup Valley: 13-Yoshihiko Tanabe.

Reedley: 17-George Y Kiyomoto, 24-Tak Naito.

Sacramento: 22-Frank M Daikai, 21-Tom Furukawa.

San Fernando Valley: 32-Susumu Yokomizo.

San Gabriel: 18-Dr George S Mizunoue.

San Mateo: 27-George T Sutow*.

Santa Barbara: 28-Caesar Uyesaka.

Seabrook: 26-Charles T Nagao.

Seattle: 24-Roy Y Seko.

Sequoia: 24-Eugene Yeiji Kono.

Snake River: 18-Sam Uchida.

Twin Cities: 22-Toshio W Abe, 16-Kimi Hara, 26-Sam Hara.

Venice-Culver: 24-DR Mitsuo Inouye.

White River Valley: 26-George Kawasaki.

National: 3-Peter T Yamazaki*.

CENTURY CLUB*

3-Henry Ushijima (Chi), 3-Takito Yamaguchi (Dnt), 1-William Y Sakai (Por), 1-George T Sutow (SMC), 3-Peter T Yamazaki (Nat).

NOV 8-12, 1982 (37)

Alameda: 18-Betty Akagi, 23-Heromi Hi Akagi.

Berkeley: 11-Masaji G Uratsu.

Chicago: 11-Takeo Itano, 17-Lillian C Kimura*, 26-Louise A Suski*, 12-Richard M Yamada.

Delano: 27-George Y Nagatani.

Detroit: 23-Shig T Kizuka.

Downtown Los Angeles: 5-Kenneth Kasamatsu, 31-David Y Nitake, 20-Hanako Nitake.

French Camp: 29-Mitsuo Kagehiro.

Honolulu: 2-Kay Uno Kaneko.

Marina: 22-Peggy Sonoda Asuncion, 23-Ann Sonoda.

Marysville: 29-Mosse M Uchida.

Monterey: 13-Dr Takashi Hattori, 18-James Tabata.

Oakland: 29-Katsumi Fujii.

Pacific-Long Beach: 26-Dr Katsumi Izumi.

Portland: 19-Jim S Onchi.

San Diego: 18-Abe K Mukai.

San Francisco: 7-Dr Ben Ichinose, 20-Eugene Sasai.

Seattle: 27-Howard S Sakura, 27-Ted A Sakahara.

Snake River: 29-Abe Saito.

Sonoma County: 20-Shiz Tsujihara.

Southeast Cultural: 22-Cathy Sonoda.

Stockton: 28-Sam M Itaya.

Twin Cities: 29-Dr George Nishida, Charles Tatsuda.

Washington, DC: 15-Shirley Nakao.

West Los Angeles: 25-Akira Ohno*, 26-Joe Uyeda.

National: 22-Lloyd K Kumataka.

CENTURY CLUB*

8-Lillian C Kimura (Chi), 3-Louise A Suski (Chi), 1-Akira Ohno (WLA).

Escorted Tours 1982 - 1983

JAPAN SPRING ADVENTURE	Apr. 4 '83
CANADIAN ROCKIES-VICTORIA (8 days)	June 16 '83
JAPAN SUMMER ADVENTURE	June 27 '83
ALASKA CRUISE (8 days)	July 9 '83
EAST COAST & FOLIAGE (10 days)	Oct. 3 '83
JAPAN AUTUMN ADVENTURE	Oct. 15 '83

For full information/brochure:



TRAVEL SERVICE

441 O'Farrell Street (415) 474-3900
San Francisco, CA 94102

1983 Kokusai Tours

Easter-Mexico Cruise

Mar. 27 - 7 Days - From \$920 - MS Tropicale
Puerto Vallarta, Mazatlan & Cabo San Lucas.
Full Casino on board.

Japan Odyssey Tours

14 Days - Most Meals - \$1995.

SPRING: APR. 2, 1983

AUTUMN: NOV. 3, 1983

Tokyo, Matsumoto, Takayama, Kyoto, Inland Sea, Shodo Island, Hiroshima, Tsuwano, Beppu Hot Springs, Ibusuki Hot Springs, Kumamoto & Fukuoka.

Special Summer Bargain

Honolulu - Hong Kong - Japan.

July 1 - 18 Days - Most Meals - \$1995.

Honolulu 3 Days; Hong Kong 3 Days; Japan—Tokyo, Pearl Island, Shodo Island, Hiroshima, Tsuwano, Matsue and Kyoto.

442nd European Tour

Sept. 30 - 24 Days - Many Meals.

London, Normandy, Paris, Lausanne, Zermatt, Venice, Rome, Florence, Lucerne, Bruyeres, Lindau, Nuremberg, Dresden, East Germany, Berlin & Hamburg.

All tours include: roundtrip flights, transfers, baggage portage, hotels, sightseeing and meals as noted.

Kokusai International Travel, Inc.

400 E. 2nd St., Los Angeles, CA 90012
(213) 626-5284

GROUP SPECIAL

\$585 Tokyo
round trip

\$770 Hong Kong
round trip with Tokyo

800-421-9331 outside Calif.

213-622-5091/622-5092

JAPAN CLUB TOURS

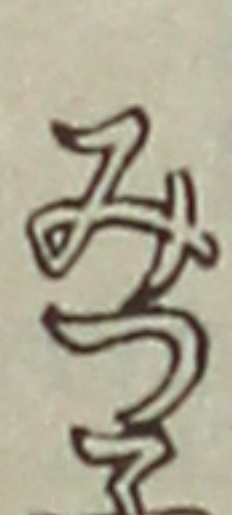
354 S. Spring St. #401 Los Angeles, CA 90013

COMPLETE VISA SERVICE

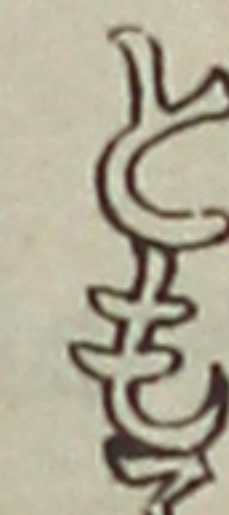
The Pendant Gift

FOR ALL SEASONS

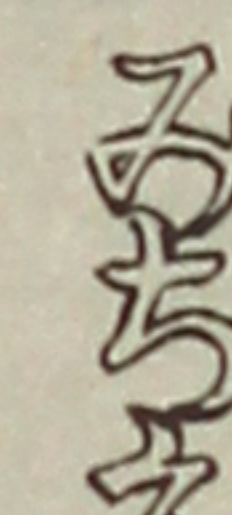
A sampling



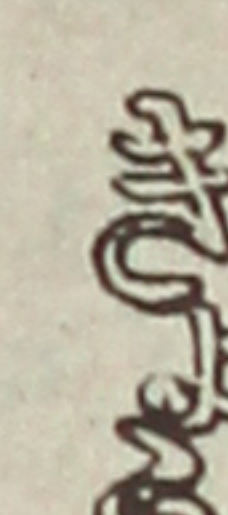
Mitsuko



Tomoko



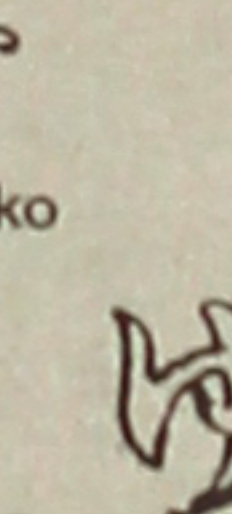
Michiye



Kyoko



Yaeko



Yumi



Takeko

All names are created by our craftsmen in 14K and 18K yellow gold with Hiragana characters. Sizes shown are approximate.

HENRY YAMADA, INC.

Creators of Fine Jewelry
330 East 2nd Street
Little Tokyo, California 90012
213/628-7865 (Telephone Orders Accepted)

Please send:

— 2 characters \$67.50 14K, — \$ 89.50 18K
— 3 characters \$89.50 14K, — \$118.50 18K
— 4 characters \$98.50 14K, — \$132.00 18K

☐ Check enclosed (CA residents add 6½% sales tax).
Please add \$2.50 for shipping/insurance

Total enclosed

Charge my ☐ Visa ☐ MasterCard

Card #

Bank #

Exp. date

Name

Address

City

State

Zip

Signature

Send gift to:

Name

Address

City

State

Zip

Please allow 10 days for delivery.

GUARANTEE: If you are completely satisfied with the item, please return it for a prompt refund within two weeks of delivery. Prices good until Dec. 31, 1982.

FOR EVERYONE ON YOUR CHRISTMAS LIST.

You are what you eat
Adult sizes: S, M, L, XL
Boys' sizes: S, M, L

YOU ARE WHAT YOU EAT!

Light blue shirt, Four color print.
K. YOSHIIHARA, 1361 South Orange Drive, Los Angeles, California 90019
Please send me the following: ☐ T-Shirt(s) below ☐ Catalog (send \$1.50)

Style _____ Size _____ Quantity _____
Name _____
Address _____
City _____ State _____ Zip _____

Calif. residents add 6½% sales tax. Total _____

If you are moving, allow 3 week's advance notice to report your change of address with label below.

New Address: _____

City, State, ZIP: _____

Effective Date: _____

• Thank you for using this form. It saves PC 25 cents in fees.

pacific citizen

244 S. San Pedro St., Room 506, Los Angeles, CA 90012 • (213) 626-6936

No. 2,216