



Priorities

35,000 members in JACL new goal

By Henry T. Tanaka National JACL President

If you are a senior or junior student in high school and interested in a concentrated study of the United States Government through personal involvement with the institutions and leaders of our Nation, keep reading.

Organized in 1969, the Presidential Classroom for Young Americans, a non-

Young Americans

partisan, nonprofit organization, offers a practical and working knowledge of the governmental process through actual on-location briefings and seminars. As Dave Ushio, National JACL Director, noted in his Jan. 9 memo to chapter presidents, "The opportunity to witness the actual functioning of all three branches of government is singularly unique and informative."

This challenging, stimulating and intensive study program is in keeping with JACL's concerted interest and efforts to encourage its young people to become more personally familiar with the inside workings of our government. Among the speakers last year were Art Buchwald, syndicated columnist; the Hon. Tom C. Clark, United States Supreme Court (ret.); Howard K. Smith, ABC news commentator; the Hon. Walter E. Fauntroy, Delegate of the District of Columbia to the U.S. Congress; and Virginia Knauer, Special Assistant to the President for Consumer Affairs.

Each year, 2000 top high school students throughout the Nation are selected to participate in this innovative and insightful program. This year, through the efforts of the National JACL, 30 to 50 positions have been reserved for the Japanese American youth. Moreover, several tuition awards (\$225 each) will be made by the National JACL 1000 Club.

Here are the details: Place: Washington, D.C. Dates: March 23 through June 22 (5th, 6th, and 7th weekly sessions).

Cost: \$225 session (includes registration, housing in a hotel, meals, transfer on arrival and departure, transportation in the city, work books, health and accident insurance). Several tuition awards available from JACL.

Travel: Round trip from your home and WDC is cost to the participant. We are encouraging chapters to at least subsidize the cost.

Now that you've read this far, contact immediately your local chapter president for an application form. If you are selected as a recipient of a 1000 Club tuition award, you will be notified by March 9, 1974. Good luck!

Ariyoshi to make

State of State talk

HONOLULU — Hawaii Gov. John A. Burns turned the task of delivering the traditional state-of-the-state message to legislators this week to acting Gov. George R. Ariyoshi.

Burns indicated he hopes to serve out his present term which ends in December. He hopes to be back on the job this month, following recovery from cancer surgery performed Oct. 22.

1974 PC-JACL

Jan. 18-26, 1974 (No. 4)

Table with 2 columns: City and Number. Lists cities like Alameda, Berkeley, Chicago, Cleveland, etc., and their corresponding numbers.

PC subscription orders are acknowledged from the above named JACL chapters during the period stated—Clare, Mgr.

The prior request that chapters submit 1974 membership forms for PC subscriptions by ZIP order is suspended. However, these still need to be sent in alphabetized.

SAN FRANCISCO — Soon JACL chapters will be gearing up for their annual membership drive. President Henry Tanaka last week announced that the 1974 goal will be 35,000 members, a 25 percent increase over last year.

At National JACL Headquarters, the questions regarding membership that come from all over the country usually fall into the lap of JACL staffer Susan Okura. What are the questions most often asked regarding membership? In response to the Pacific Citizen's query, Susan supplied this list:

1—How much does it cost?

The price of membership varies from chapter to chapter. National dues are \$9 and individual chapters usually add to that figure for their own operating expenses. Most chapters offer special rates to couples.

2—If I join, may I go on the charter flight to Japan?

Yes you may, but you must have been a member six months prior to the date of the flight's departure.

3—What will I get when I join?

Membership in JACL brings with it (a) a year's subscription to the JACL newspaper the Pacific Citizen; (b) eligibility for JACL's charter flights to Japan; (c) in some areas opportunity to join a group health plan; (d) eligibility for the JACL Credit Union; (e) access to present and future resource materials available through regional offices and national headquarters; and finally (f) the knowledge that you have helped to support the largest Japanese American organization in America — one that for 44 years has been working to secure equal rights for Americans of Japanese ancestry as well as for all other Americans regardless of race, color, creed or national origin.

4—I keep hearing about the 1000 Club. Century Club. Fifty Club... what are they?

Those are just a few of the many ways a person can join JACL. In all we offer seven different types of membership.

(a) Regular membership. This is described in Question One.

(b) 1000 Club. Consists of \$25 national dues. Chapters may add to the figure for operating expenses. Originally the 1000 Club was started to donate \$25 for National JACL. Today membership in the 1000 Club totals over 2,900.

(c) 50 Club. National dues of \$50 with \$5 being returned to the chapter.

(d) Century Club. National dues of \$100 with \$15 returned to the chapter.

(e) Corporate Membership. Companies an businesses may join JACL by paying \$250 annually. Of the total, \$50 is returned to the chapter.

(f) Student Membership. National dues are \$5, chapters may add for operating expenses. (Subscription to the Pacific Citizen is not included)

Tenants occupy site where JACL Hq. Bldg. due

SAN FRANCISCO—As contributions continue to arrive at JACL Headquarters, the building fund committee is optimistic about a short and successful campaign. "If all goes well, we may be able to move into the new building late this fall," reports Steve Doi, co-chairman of the national fund drive.

"Our plans are very tentative," he said, "because we may not be able to begin construction on the building as soon as we had planned."

The present tenants of the structure now occupying the site of the new JACL building are unable to move until their new quarters are built. Heavy winter rains have held up completion of their building. Original plans had called for the building to be vacated in January.

"As soon as the building is empty, it will be razed and we can begin construction on the Headquarters building. At that time we will have a more definite idea of the exact date we will be moving in," Doi said.

Meantime Doi and his committee are hard at work encouraging contributions to the building fund. "The response from members and chapters has been very good thus far, but we are still short of the goal," he added.

A special appeal to all PC subscribers is being planned, Doi revealed. They will soon receive a brochure describing the new building, a letter asking for support and pledge card from the committee. Donations to the fund are tax-deductible and may be sent to chapter Building Fund chairmen or directly to Nat'l JACL Headquarters, 22 Peace Plaza, Suite 203, San Francisco, Calif. 94115.

JACL in Almanac

NEW YORK—The World Almanac carries the same and headquarters address of the Japanese American Citizens League for the first time in its 1974 edition.

but may be obtained at \$3.50 per year when remitting dues. —Ed.)

(g) Associate Membership. For those wishing to join JACL but living where there are no chapters, national dues are \$15 and \$5 for each additional member of the family. (Pacific Citizen subscription is included on a household basis.—Ed.)

Each of the first four types of memberships, described for single membership. Most chapters have a reduced rate for couples or additional family members. (Sampling of chapter dues structure has appeared in the PC and will be repeated as space allows. —Ed.)

57 of 96 chapters turn in memberships

LOS ANGELES—Under the new procedures, the Pacific Citizen also receives a copy of memberships about the same time as National Headquarters, according to PC Circulation Manager Yuki Kamayatsu.

To date (Jan. 25), 57 of the 96 chapters have submitted memberships (as well as orders for the PC). With over 8,000 memberships counted during the first month, it was the earliest start for new memberships and renewals since PC with Membership was instituted in 1961. Records indicate that last year, about 4,700 memberships had been received during the month of January.

NC-WNDC JACL 1000 Club spring charter changed

SAN FRANCISCO—With the National 1000 Club NC-WNDC spring charter flight from San Francisco to Japan cancelled due to lack of interest, arrangements have been made for a group flight via Japan Air Lines, departing April 7 and returning April 30.

Individual fare with the group will be \$483.10 and will be on a regularly scheduled JAL 747 flight, it was announced by Tad Hirota, 1000 Club chairman.

The PSWDC-JACL charter flight leaving from Los Angeles on March 30, on the other hand, is fully booked, though the fare has been increased from \$325 to \$340 because of fuel price increases.

Other special flights coordinated by the 1000 Club include:

- SUMMER June 14-July 5—San Diego JACL Charter Flight to Tokyo (JAL), \$343. June 18-July 17—West Los Angeles JACL Charter Flight to Tokyo (JAL), \$340. July 8-July 28—Chicago JACL 1000 Club Charter Flight to Tokyo (PAA), \$465. July 28-Aug. 18—PNWDC-Natl JACL Charter Flight to Tokyo (PAA), \$330. (Dates to be announced)—1000 Club Group Flight to Portland Convention.

FALL Sept. 28-Oct. 30—West Los Angeles JACL Charter Flight to Tokyo (JAL), \$340. Oct. 22-Nov. 22—New York JACL-CY-EDC 1000 Club Charter Flight to Tokyo (JAL), \$560.

FALL (To Be Scheduled) Gardena Valley JACL Charter Flight to Japan. San Jose JACL Charter Flight to Japan. Nat'l JACL 1000 Club Charter Flight to Japan.

EDC JACL charter flight to Japan set

NEW YORK — Eastern District Council announced a 1974 fall charter flight leaving New York Oct. 22 and returning from Tokyo Nov. 22 at a cost of \$560 per adult.

Rise in the cost of fuel has increased the rate charged by New York JACL for two previous charter flights for its members in 1972 and 1973 when it was \$450. Normal roundtrip fare today from New York-Tokyo is now \$1,170.20.

If the trend continues, however, JACL members will find that their money will go much farther in Japan in 1974 than in 1972-73 as the dollar-yen exchange is gradually favoring U.S. rates.

Passengers six months prior to departure to qualify for this flight. Detailed information will be sent to EDC chapters.



LOS ANGELES—Three recipients of Japanese decorations honored Jan. 22 by the Japanese community are (from left) Waichi Yoshimura, 78, of West Covina; Hatsuaki Tashiro, 73, of Messilla, N.M.; and Yataro Minami, 71, of Guadalupe. Over 300 attended the dinner hosted by a dozen prefectural, social, religious and business groups through the So. Calif. Japanese Chamber of Commerce. —Cut courtesy: Ratu Shimpo

PACIFIC CITIZEN

Membership Publication: Japanese American Citizens League, 125 Weller St., Los Angeles, Calif. 90012; (213) MA 6-6926 Published Weekly Except First and Last Weeks of the Year Second Class Postage Paid at Los Angeles, Calif.

VOL. 78 NO. 4

FRIDAY, FEBRUARY 1, 1974

Subscription Rate Per Year U.S. \$7 Foreign \$20

15 CENTS

Library of Congress favors 'Jpn'

(Special to The Pacific Citizen) WASHINGTON — The move to have "Jpn" as the acceptable abbreviation for Japan or Japanese has leaped a continent.

Governor Reagan in California (see Jan. 25 PC) on Jan. 7 has requested his state agencies to eliminate the offensive abbreviation ("Jap") and substitute it with "Jpn" as was proposed by Dr. Clifford I. Uyeda of San Francisco.

On Jan. 16, the Library of Congress revealed it was taking steps to adopt JPN as the code for Japanese.

JACL, through its Washington representative Barry D. Matsumoto, had objected on Dec. 12 to the Library of Congress paper on the Revised List of Languages and Language Codes Recommended by Working Group on Bibliographic Codes, which contained the offensive contraction.

"While JACL recognizes the Library of Congress did not intend any racial derogation in its usage of the term 'Jap,' we still believe that the use of that contraction is inappropriate," Matsumoto wrote.

"When that term appears in official government publications, we believe that it reinforces the continued use of the term by those who intend to use the term as a racial epithet. (Its) appearance even with innocent intent causes many Japanese Americans distress and discomfort because it recalls the severe discrimination and acrimony of the 1940s."

"If organizations such as the Library of Congress adopt such a contraction (Jpn), it will soon become a common and easily understood usage," the JACL Washington representative concluded.

L. Quincy Mumford, Librarian of the Congress, in his response recalled that a committee of staff members from the three national libraries, the Library of Congress, National Library of Medicine and National Agricultural Li-

brary, met in 1967 to standardize its list of language codes, using the basic principle of using the first three letters of the English form in the language list.

And when the code was designed for use in their machine-readable catalog (MARC), the question of sensitivity over the use of JAP, HEB, HUN, etc., as derived codes to identify names of language was discussed at length, Mumford continued. "The conclusion was that when it is understood that these are derived codes (not terms of contractions) used for internal computer purposes, there should be no cause for offense," he explained.

But the JACL objection makes it clear that this explanation was unwarranted, Mumford admitted.

"Accordingly, the Library of Congress is taking steps to adopt JPN as the code for Japanese. This will entail clearing the change with the other two national libraries and the American Library Assn. Machine-Readable Bib-

liographic Information Committee," he said.

The Library of Congress also intends to update several hundred records in its own MARC systems and to notify its subscribers of the change. They in turn will have to alter records which will take time but eventually a complete substitution can be anticipated.

Whenever Japan or the Japanese are mentioned in Library of Congress printed cards or publications, the words are always spelled in full, Mumford added. "We regret, therefore, that the machine-readable language code for Japanese should have seemed to legitimize an objectionable epithet," the JACL was told.

Continued on Next Page

WASH. STATE LAWS ON LICENSING TARGET OF HUMAN RIGHTS GROUP

Legislature Reconvenes for '74 Session; First Nikkei Legislator Sworn Into House

SEATTLE, Wash. — The State Human Rights Commission this past week (Jan. 17) agreed with the Asian American Advisory Council executive secretary Martin E. Matsudaira to press for repeal of state laws restricting the issuance of professional licenses to U.S. citizens only.

Among the professions which the Asian American Advisory Council found in the state statutes requiring citizenship for a license are:

Attorneys, accountants (CPA, LPA), architects, beauty culture operators, debt adjuster, dentist, dispensing optician, optometrist, pharmacist and interns, teachers, etc.

Matsudaira pointed to the state licensing laws as being discriminatory since many federal laws, judicial decisions and the 14th Amendment provide noncitizens are entitled to job opportunities where citizenship is not a legitimate justification for denial of employment.

Qualified professionals from overseas, he added, have been unable to pursue their career. Furthermore, employers in the state cannot refuse to hire a person because of his "national origin."

The Human Rights Commission is expected to initiate a bill to repeal all applicable sections of state statutes which contain citizenship requirements for licensing.

The state legislature reconvened in Olympia earlier in the week (Jan. 14), which saw State Rep. Dick Kishimoto, 34, of Vancouver, Clark County, sworn in to fill out the unexpired term of Richard L. Smythe, who had resigned.

It was also the first time Kishimoto had ever been in the state's legislative building. He has been assigned to three committees: Local Government, Education, Natural Resources.

The Hawaiian-born Yonsei is looking forward to the fall elections, noting "a legislator wants to feel he has the confidence of the people (which) he can only get by winning an election." He's started to grapple with issues facing this session, represented by the stack of some 2,200 bills on their desk to date.

Bill to aid employees of bankrupt businesses

OLYMPIA, Wash. — What happens to the worker who loses wages coming to him when a business or industry goes bankrupt or out of business for other reasons? To take care of this problem,



Rep. Dick Kishimoto

lem, Rep. Dick Kishimoto (R-Vancouver) in one of his first bills introduced in the State of Washington legislature this past week, seeks to establish a wage claim trust fund within the Dept. of Labor and Industries.

Under the legislation, legitimate employee claims against any employer would be paid from the fund. The fund would be financed from a small quarterly assessment (\$2 minimum to \$32 per year for the biggest) of all businesses and industries filing reports for industrial insurance. The assessment is per employer and not employee, Kishimoto emphasized.

The unique feature is that assessment would be discontinued once the fund reaches \$1 million and then reimposed after the fund dips to \$500,000 or less.

Asian American group voted funds again

OLYMPIA, Wash. — The Asian American Advisory Council to the Office of the Governor was voted funds to keep on operating, but under a new title.

The Senate last week (Jan. 25) passed HB 1169 75-20, enabling the council to function beyond Jan. 31 — the cutoff date of previous funding. The body will be called the State Commission on Asian American Affairs.

S.F. CHINESE PUPILS WIN IN SUPREME COURT

Unanimous Decision May Require Program for 5 Million Others

WASHINGTON — A unanimous Supreme Court last week (Jan. 21) ordered the San Francisco Unified School District to provide special instruction to Chinese students who do not speak enough English to understand regular classroom proceedings.

The Chinese-speaking pupils, though issued the same textbooks and instructed by the same teachers as English-speaking students, are now "effectively foreclosed from any meaningful education," the decision declared.

Justice William O. Douglas, author of the opinion, based the ruling on Title VI of the 1964 Civil Rights Act, which forbids discrimination in federally financed programs.

The impact is expected to be felt far outside San Francisco's Chinatown, where the Lau vs. Nichols case originated in 1970. An additional 5 million children enrolled in the nation's public schools also need special language instructions, according to briefs filed with the high court. Most of these are Spanish-speaking, or Mexican or Puerto Rican descent.

Nearly every public school system in the country receives federal funds. Each of them presumably will be obligated by the decision to establish remedial classes for non-English speaking pupils.

The opinion did not spell out exactly what kind of instruction the San Francisco district should provide to overcome the language problems of its Chinese students. "No specific remedy is urged upon us," Douglas noted. "Of Chinese ancestry who do not speak the language is one choice. Giving instructions to this group in Chinese is another. There may be others."

The case was sent back to the U.S. District Court in San Francisco with instructions to determine the remedy.

The school district, which argued that it could afford remedial instructions for about 1,000 of the 2,800 Chinatown pupils with English language deficiencies (there are about 16,500 children of Chinese heritage in San Francisco), stands to lose all of its federal money if it does not expand its program. However, the Nixon Administration has refused to use funds cutoffs to enforce Title VI.

Douglas said it was irrelevant that the school board had acted in good faith by setting up some — if limited remedial programs for San Francisco's minorities. "Discrimination is barred which has the effect of denying equal education 'even though no purposeful design is present,'" he wrote.

Justice Potter Stewart, in a concurring opinion, said the only issue was whether the Dept. of Health, Education and Welfare was authorized to issue regulations calling for "affirmative steps" to rectify language deficiency of minorities.

Continued on Page 3

Judge Takasugi dismisses 36 criminal cases

LOS ANGELES — On Jan. 8, 1974, Judge Robert M. Takasugi of the East Los Angeles Municipal Court dismissed 36 criminal cases for what he termed a "flagrant violation" of the defendant's constitutionally protected right to a "speedy and public trial."

The decision, according to Takasugi, has become controversial only because of the great number of cases involved. The dismissed cases in the main did involve drunk driving cases, drug arrests, resisting arrests and batteries upon persons.

Although such mass dismissals are unprecedented, Takasugi indicated that his main function in deciding these cases was to listen to the testimony, view the evidence, and decide the cases according to his conscience without concern as to how popular his decision would be received by the public.

If public reaction becomes a major factor in a judge's decision, Takasugi believes that judicial independence and responsibility would be dispensed with.

Numerous judges and attorneys, including all the judges of the East Los Angeles Municipal Court, were overwhelmingly in support of Takasugi's decision.

When questioned on the reasons for his decision, the Judge provided the following:

1—In August, 1973, the East Los Angeles Municipal Court, consisting of four judges and a court commissioner, did not suffer what is uniquely referred to as a "criminal jury trailing list."

(A trailing case is one where a given scheduled trial is not heard on the date set for the reason that there are no available courts. Accordingly, the case trails from day to day until an available division can hear the case in question.)

However, since August, 1973, the policy of the District Attorney's Office was such that "plea bargaining" was almost non-existent.

"Plea bargaining" is a practice judicially encouraged by the California Supreme Court where the prosecutor and the defense counsel discuss the facts and renegotiate the charges in exchange for a guilty plea in an effort to alleviate court congestion.)

Although such practices curb the adversary nature of the judicial system, no court can possibly survive without resorting to this measure. Chief Justice Burger has been quoted as saying that if there were even a mere two percent (2%) reduction in plea bargaining, the entire judicial system would collapse because of the lack of judicial personnel. In the case of the East Los Angeles Municipal Court, the Chief Justice proved to be an able prophet.

By ignoring the concept of "plea bargaining," the East Los Angeles Municipal Court suffered a trailing list of seventy-one (71) cases by Dec. 31, 1973, in addition to approximately 100 jury trials being calendared each week.

The then Presiding Judge of the East Los Angeles Court, Daniel Paul Rikalo, testified that although the volume of cases has remained substantially the same, he had never seen more than a negligible amount of "criminal jury trailing cases" in the 12 years he has been presiding in the East Los Angeles Municipal Court.

2—Judge Takasugi also based his decision upon the fact that there were approximately 30 court days of authorized judicial absences during November and December, 1973, without a replacement judge. The Nisei judge stressed that unfilled absences in such numbers certainly did not aid in alleviating the District Attorney of the County of Los Angeles, was per problem of "court congestion." Though replacements were requested of the Judicial Council of the State of California, there were no available judges to fill in during absences, thereby indicating that the East Los Angeles Municipal Court certainly does not claim a monopoly on "court congestion."

3—Long before the decision of Jan. 8, Joseph Busch, the sonally contacted and notified that written motions for dismissal were being filed for the violation of the rights of many defendants for a "speedy trial." No significant policy changes were noted.

Judge Takasugi further stated that every conceivable effort was made to resolve the problem, but no cooperation was received.

Judge Takasugi strongly affirmed his position that his decision in no way should be interpreted as favoring the criminal. He is quoted as saying, "That is not only an absurdity, but a grossly unethical political statement."

Deeply regretting the fact that his decision deprived the People of the State of California and the defendant of a trial, Takasugi stated that the Constitution guided his decision. He added that, "If we are to ignore the Constitution, the basic structure of our concept of ordered liberty would be totally obliterated."

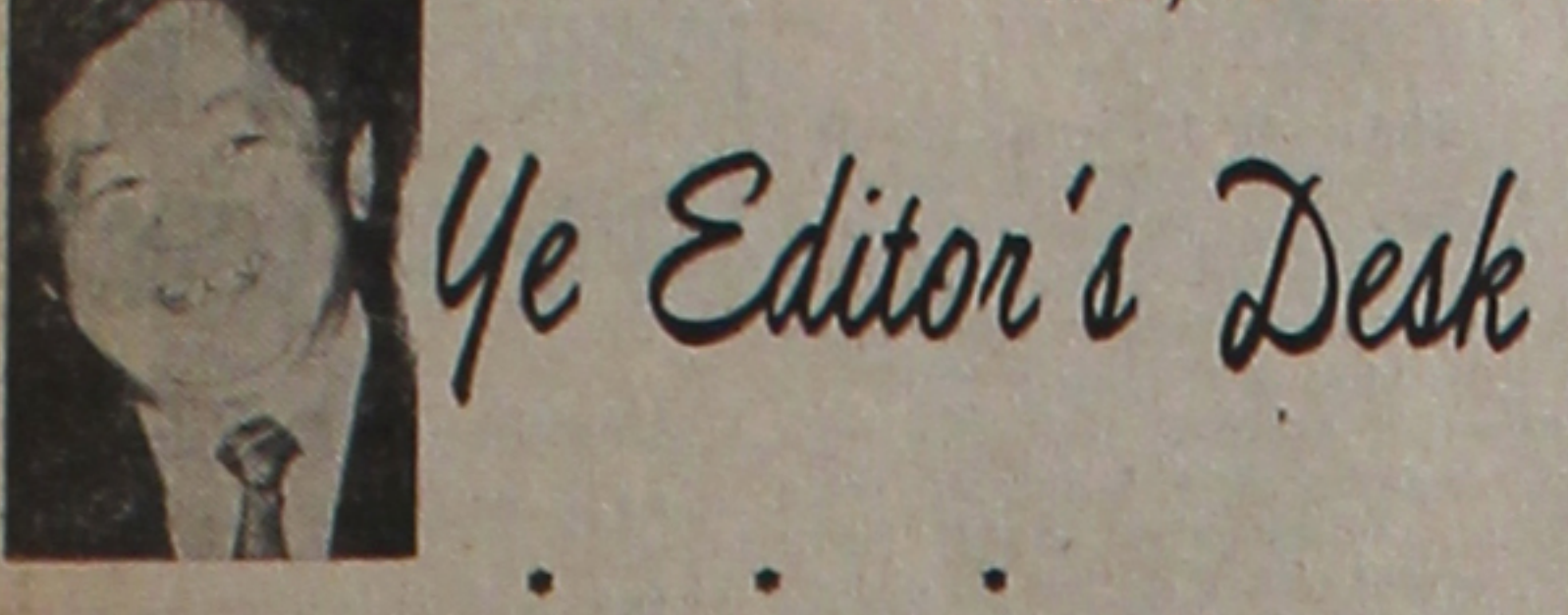
All the other judges of the East Los Angeles Municipal Court concurred with Takasugi's decision to dismiss.

Takasugi, 43, of Montebello was appointed to the municipal bench by Governor Reagan late June last year, succeeding Judge Myer Marion

Continued on Page 3

PACIFIC CITIZEN
Published Weekly by the Japanese American Citizens League except the first and last weeks of year 123 Weller St., Los Angeles, Calif 90012
No. 1779
HENRY T. TANAKA, President KAY NAKAGIRI, Board Chairman
HARRY K. HONDA, Editor
Second-class postage paid at Los Angeles, Calif. Subscription Rates (payable in advance): U.S. \$7 a year, \$13.50 for two years. Foreign \$9.50 a year. \$13.50 for two years. Single copies 15¢. Note: Subscribers wishing first-class delivery, either air or surface, should inquire about rates domestic or international.
News and opinions expressed by columnists, except for JACL staff writers, do not necessarily reflect JACL policy.

2— Friday, Feb. 1, 1974



Ye Editor's Desk

THE GULAG ARCHIPELAGO

Aleksandr I. Solzhenitsyn's latest work, "The Gulag Archipelago, 1918-1956", the first non-fiction work of the Nobel Prize-winning author, has an element of historic interest to the Japanese and other Asians in America. Excerpts of the English translation to be published this spring by Harper & Row were reprinted in the New York Times (and we're grateful to "Korea Week" of Washington, D.C., for delving further into it) which notes:

"Several hundred thousand Koreans were exiled to Kazakhstan, all being suspected spies. There was one whole section of Koreans and all of them died from dysentery, every last one. From our own section every morning they took 100 (Korean) corpses."

While the Soviet press has called the book "a blanket slander of the Soviet people", the book is understood to be drawn from his own experiences (Solzhenitsyn was sent to a prison camp in 1945 for disrespectful reference to "the moustached one", meaning Stalin) and testimonies of hundreds of other former prisoners, describes the tactics of the Soviet secret police, their methods of arrest and interrogation and the conditions of prison camp life. The title expresses the image of these prison camps as a spray of islands throughout the vast reaches of the Soviet Union. GULAG is an acronym for the Russian name for administration of the prison system.

The Washington, D.C., semi-monthly Korea Week refers to "The Russian Faction in North Korea" written jointly by Univ. of Pennsylvania Professor Chong-sik Lee and Seoul research fellow Ki-wan Oh, and published in April 1968 in the Asian Survey, in embellishing the excerpts.

Korean migration into Russia is traced back to 1861 when a small group of farmers crossed the Tuman River into Siberia. They risked the penalty of death in leaving the country but famine and other natural calamities motivated the immigrants. The Russians, initially, welcomed them but as the numbers began to increase, an agreement was reached in 1884 with Seoul to restrict the migration. By 1910, the number of Koreans in Russia was estimated at 80,000. By 1929, there were between 220,000 and 250,000 to constitute the third largest ethnic group in Eastern Siberia, exceeded by the Russians and Ukrainians.

The Korean Communist (Koryo) movement originated in Siberia in 1918 with groups emerging in Khabarovsk and Vladivostok. During the same period (1919-22), Koreans maintained anti-Japanese guerrilla troops. With Japanese penetration into Manchuria, Soviet-Japanese relations were greatly strained and Russians suspected connivance on the part of the Korean minority. This led the Stalin regime to launch one of the largest relocations in history. In September, 1937, the entire Korean minority of over 200,000 persons in Eastern Siberia were uprooted and moved to Kazakhstan and Uzbekistan in Central Asia. (That's like going from Seattle to Miami—3,400 miles).

In spite of the grim new start, the Koreans manifested their doggedness and resilience simply by surviving and by emerging as relatively prosperous communities, which produced the men of the so-called Russian faction in today's North Korea. The Korean minority in Soviet Russia numbers 313,375 (by the 1959 census) and a Korean-language newspaper, "Banner of Lenin", is published in Kazakh SSR.

Going to back Solzhenitsyn's extraordinary document and reading the excerpts (which appeared in more abbreviated versions in other newspapers), the dimensions of repression upon the human spirit are overpowering. In any year, Solzhenitsyn estimates, there could have been as many as 12 million inhabitants in the "archipelago"—dwarfing by comparison the record of both the Czarist regimes and Nazi Germany.

The book stops its account at 1956. The work was completed in 1968 but not published for fear of reprisals upon those who assisted him. A copy of the 260,000-word manuscript was entrusted to a Leningrad woman. During the summer, state security officials interrogated her until she disclosed the manuscript's whereabouts and then committed suicide. The author then decided there was no longer any reason to delay publication to release the book abroad (the material is said to have been smuggled out in installments) and a Paris edition appeared last Dec. 28.

Existence of the manuscript leaked out in August when in a rare interview with two Western correspondents, he denounced the tightening suppression of thought in his country and threats against his life. The entire chronicle is being read daily in the half-hour Russian language segment of Radio Liberty, the U.S.-sponsored station in Munich. That it is being received, despite the jamming, is further noted by reports that Russians are curious, some demanding Solzhenitsyn be isolated and the Soviet press bitterly condemning the book.

The world now waits to see how the Soviet Union will deal with one of its most eloquent and courageous citizens. Some observers feel Solzhenitsyn will be expelled. Others believe the Kremlin is reluctant to face the foreign protests that his imprisonment or exile to Siberia might bring and undermine the new detente with the West. The situation has the makings of a Greek tragedy in which both sides move toward a showdown that neither wanted.

25 Years Ago
In the Pacific Citizen, Feb. 5, 1949

House subcommittee favors awards \$40,000 to Nisei widow Issei citizenship proposal . . . Nao Asakura in crash case Japanese American official . . . ADC seeks removal of race ban in admitting GI fiancées . . . Japanese Americans serve on faculty at U. of Hawaii territorial senate . . . Mine Okubo's Washington . . . Mine Okubo's murals grace salons of four Martha Ono . . . Calif. jury new U.S. ships.

Street crimes cast pall of fear over N.Y. Chinatown

By FRANK CHING (New York Times)

(Frank Ching will be one of the panelists at the New York JACL seminar on the media, Feb. 16)

New York
A frustrating kind of fear—one that can neither be ignored nor documented—permeates the narrow, winding streets of New York's Chinatown these days.
Residents and merchants of the area, long regarded as an island of tranquility in a stormy city, are complaining angrily about what they consider a rising crime wave and clamoring for greater police protection.

Amid spreading tales of muggings, beatings and other crimes, some stores have begun closing early. A number of restaurants will admit only recognized customers at night. Streets once festive until the early hours of the morning are now nearly deserted by nightfall. Business is off by up to 30 per cent.

A threat by Chinatown's entire business community to shut down one day and stage a mass protest at City Hall has been headed off temporarily only by the intervention of Mayor Beame, who, with Sen. Jacob K. Javits and Police Commissioner Michael J. Codd, met in early January with a 12-member Chinatown delegation to hear their views and receive a petition for action by the city government.

Ironically, police statistics would seem to suggest that crime in Chinatown is declining. But residents scoff at that notion and even some police concede that the figures probably do not accurately reflect the situation.

Interviews in the area indicate many crimes are not reported, partly because of the language problem. Some shufflingly say the police do not respond promptly, if at all, to emergencies. Others cite apathy and perhaps most significantly, a fear of reprisals, particularly by youth gangs that are believed responsible for much of the crime.

It was a holdup on Dec. 12 at the Dumpling House—in which two gunmen wounded the owner, Wilson Chang, and killed his brother, Michael—that precipitated the uproar of merchants and the plan for a district-wide shutdown and mass demonstration at City Hall.

Though the protest has been postponed, the people of Chinatown are by no means mollified. "We want the police to investigate any suspicious-looking people, question them on where they live, where their parents are, where their money comes from," said one angry restaurant owner.

A storekeeper took an even harder line: "Suspects should be arrested and punished. They should be beaten up till they confess. And if they're under-age, their parents have to be held responsible. Right now, the good people have no protection. Only the criminals have protection."

Precinct police captain, William Slattery, insists, "We cannot break the law to enforce the law. They say in Hong Kong the police slap them around and dump them in the river. . . . But this is not Hong Kong."

Crime statistics show a 24 pct. drop in reported crime from June-November, 1973, as compared with the same six months in 1972. In all of 1973, there was only one homicide in Chinatown.

The precinct has only Chinese policemen. Detective John Kai, a one Chinese clerk, Peter Hon, for Chinatown. One request put to Mayor Beame by the benevolent association was that a special telephone number be set up for Chinese-speaking people to report crime.

But apathy and fear of reprisals appear to be the main problems. Most people figure, "Why compound the loss by losing a day's pay by appearing in court?" Detective Kai noted. They believe by going to the police they inconvenience themselves and be open for reprisals.

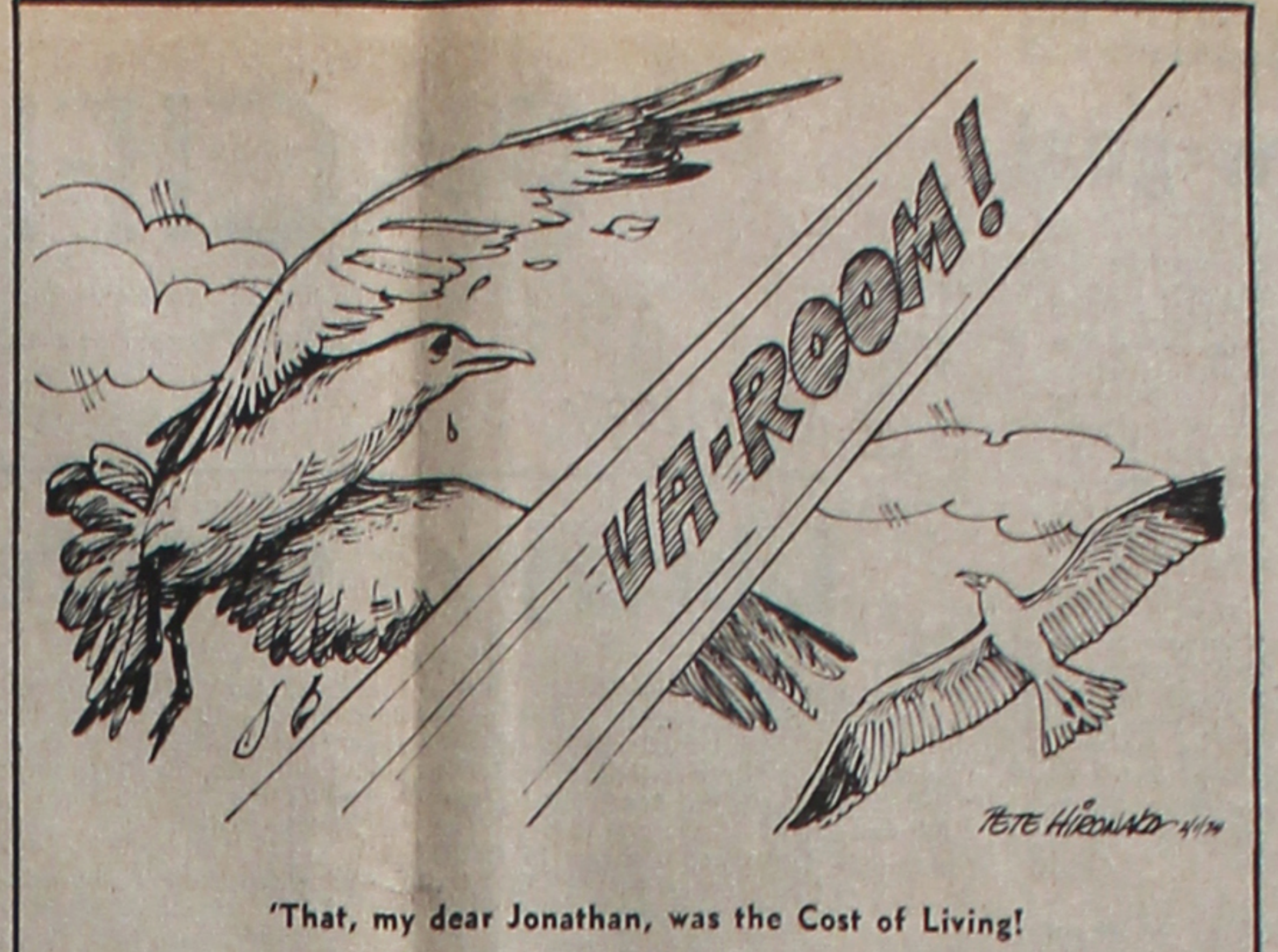
A Chinatown newspaperman, Ming Leung, said gang members have been known to "haul people into an alley and take their identifications as well as their money and warn them that if they report the crime, they will be killed."

Capt. Slattery confirmed that many suspects have been released because victims are unwilling to act as witnesses.

Aside from numerous robberies and burglaries, there are reports—often unverified—of kidnapping, extortion, rape and mugging.

Books on Hand

A limited supply of the Japanese edition of "Bosworth's America's Concentration Camps" has been received for sale by the Pacific Citizen at \$5 per copy (or \$5.35 postpaid). Translated by Prof. Yukio Morita of Toyoama University, and a Ohio State University graduate student, it was an immediate sell-out when the original supply was received in May 1973.



'That, my dear Jonathan, was the Cost of Living!'

Is Energy Crisis for Real?

WASHINGTON — Rep. Spark Matsunaga (D-Hawaii) predicted the 93rd Congress in the second session will conduct investigations on the exact nature and extent of the energy crisis in a recent (Jan. 16) address before the Grocery Manufacturers of America, Inc.

He also called GMA to check "the rising cost of America's food basket", noting a 24 pct. rise in the cost of food last year.

"The energy crisis has heightened the demand for the impeachment of the President, which I found to be still the most talked about issue in my congressional district," said Matsunaga, who has just returned from Hawaii. "The mood of Americans across the country is such that they will be satisfied with nothing less than the most searching probe of the Nation's energy resources."

"Millions of Americans have responded to the Administration's call to conserve energy," Matsunaga continued, "but the credibility of the White House has been strained almost to the breaking point by the recent revelations of large political contributions from the oil industry to the President's re-election campaign."

Matsunaga, who earlier introduced legislation providing for a House investigation of the oil industry, said the lack of any reliable set of oil inventory figures has also undermined public confidence in the existence of a true energy crisis.

Energy Chief William Simon has found unreliable the figures disclosed by the oil industry under the existing voluntary disclosure system, Matsunaga told his audience. While testifying before a Joint Economics subcommittee in Capitol Hill, Simon announced that he plans to seek legislation to enable the Federal Energy Office to collect first hand energy data.

"There is no doubt in my mind that Congress, with grass roots sentiment ringing in its collective ear, will enact such authorizing legislation," the Hawaii lawmaker said.

The worst may still be ahead, Matsunaga warned, pointing out that the energy crisis has cost thousands of Americans their jobs already.

"The Administration is forecasting that the average rate of unemployment in 1974 will reach 5.7 percent. Many predict a six percent rate of unemployment," Matsunaga said. "At the same time, figures released by the Joint Economic Committee show that food costs rose at the rate of 24 percent in 1973—more than six times the rate of increase in the 1966-70 period."

"According to the same study, the average middle-income family earning \$12,614 per year had to pay \$154 more for housing, \$30 more for transportation, and \$57 more for clothing and personal care in 1973 than in 1972," he said.

"We must find jobs for the swelling ranks of the unemployed; we must find within our orders new sources of energy and learn to increase the productivity of our existing resources; we must find ways and means to prevent rising prices from becoming the cause of frustration and despair to million of Americans who are unable to maintain their former standard of living; and we must act to restore faith in our government among all Americans."

"By voluntarily checking the rise in the cost of America's food basket, GMA members can make a significant contribution toward easing the national crisis," the Hawaii lawmaker concluded. "By a show of leadership in this area, rendered in America's best interests, GMA members will earn the unceasing gratitude of all Americans."

LETTERS FROM OUR READERS

Chapter project
Dear Harry:

I have received some very interesting comments to my final "By the Board" contribution on Fife, Wash. I've been told that many chapters had previously gone out to gather information for the UCLA JARP, and that much enthusiasm was generated by Joe Grant Masakia before his untimely death. Perhaps someone can be forced to come up with an historical treatise on Japanese American immigration, but unfortunately with a project this vast the effort would probably be only half! Regardless, I believe that another effort should be done to supplement the JARP.

I would like to see each chapter compile the histories of all the communities in its district. For example: Puyallup Valley could compile the history of Tacoma, Puyallup, Fife, Sumner, Firwood, Alderton, etc., as well as other nearby areas where Japanese immigrants lived, such as Eatonville, Kapowsin, Onalaska, Enumclaw, etc. Historical facts can be verified by our fast dwindling Issei as well as by older Nisei. This can be gathered on the National level and published. This could be as complete a community history as is possible and would be a fitting memorial to our Issei (perhaps much more than any edifice) for their pioneering efforts.

There would be much history lost if we do not do something about it now. There are many vignettes of life which would be lost as mentioned in my article. For example I went to a resort at Roche Harbor in the San Juan Islands. The people there told me that years ago the area had many Chinese laborers, who were held in virtual bondage working in a limestone quarry. They told me the cemetery was back in the woods. The grave markers were mainly of wood and

William Marutani
East Wind
YELLOW MELLOW

Philadelphia

Of the many "Kung Fu" flickers that seem to pervade the movie screens, I've seen but one, starring the now-deceased Bruce Lee. I must confess that the movie had a somnambulant effect on me; or to put it directly, I went to sleep. But not before I perceived within the heavy plot, a deep animosity on the part of the Chinese toward the Japanese. The Japanese were clearly the "bad guys", sinister, brutal, oppressive. One of my hakujin friends commented on this and I simply responded that based upon my superficial understanding of recent Asian history, particularly shortly before and after the turn of the century, I personally didn't blame the Chinese for harboring hatred for the Japanese. (Although by now, even in Asia, one would hope that such bitterness would have subsided so it no longer needs to be propagated and refueled on the movie screens.)

But that's Asian history, not U.S. history. Here in the U.S. I became aware early in my youth that my Issei parents labored under some undefined bugaboo about Chinese (and Koreans) which I've never understood, to this day. Consequently, my first approaches toward Americans of Chinese and Korean ancestry were ones of hazy wariness. A silly tragicomedy. I rather suspect that the experiences of my counterparts within the Chinese and Korean communities paralleled mine. Which then makes the whole situation doubly, triply silly.

In today's terms, unfortunately there exists within segments of these Asian American communities an admixture of that aforementioned "undefined bugaboo", racial chauvinism and just plain ignorance which gives rise to unfounded uncertainty and that doubly, triply silly fear. Being a Nisei exposed largely to fellow Nisei, I can categorically state that such voodoo mentality exists among the Nisei. And in some high places. And some of my Chinese acquaintances also inform me that among Chinese Americans a similar ossified mentality petrifies them against openly speaking, let alone working, with Nisei. Also, I'm told, often in "high places." I've often wondered why these "high priests and priestesses" who hold sway in our respective Asian American communities are so opposed to us ordinary folks below talking to one another. Perchance could it be that once the barriers of ignorance are swept away by open communication, that the status quo will be shifted and the priests and priestesses will no longer be on high?)

Several months ago, unfettered by these shibboleths and fears of bugaboos, we held an Asian conference in Philadelphia attended by Bengali, Chinese, Filipino, Korean, Japanese and Pakistani delegates—all Americans. We openly communicated with one another as Americans with common cultural ethos whose life experiences were remarkably similar. "Racial distinctions" became quickly blurred. So much so that some of my Nisei acquaintances present began to "look Chinese" (however that's supposed to look) and I could have sworn that some Chinese were Nisei. It was a gratifying experience because it established a plain, simple, obvious fact: it was just a case of people getting together and finding that they could, and did, have a free and open discussion interlarded with understanding. Yes, "even" Asian Americans.

So ordinary Asian Americans: Let's arise. Cast aside those undefined bugaboos, turn a deaf ear to the high priests and priestesses who preach only doom. Let us meet and talk. We can hear; we can listen; we can understand. It works!

* I might comment that this writer is often taken for a Korean by other Asian Americans. Which is just fine with me. Congressman Sparky Matsunaga relates that he, too, enjoys that same distinction.

Use of 'Jpn'

Continued from Front Page
The Library of Congress, in adapting the work cheaply, and computer to retrieving information through use of tapes peris have noted.

with a pilot project in 1968. Automation in the effective use of bibliographic information is preceded as a powerful method for organizing such data because machines can do the work cheaply, tirelessly and very accurately; library examination through use of tapes peris have noted.

Chapter People Handling 1974 JACL Memberships

Membership fees shown after the name of the CHAPTER are for Regular Single and Couple. Thousand Club (TC) fees indicate single and additional Regular membership for spouse. Student(s) or Jr. rate does not include PC subscription. Person listed is the membership chairman but check is payable to the JACL Chapter. Unlisted chapters are invited to submit similar data. To insure uninterrupted subscription to the Pacific Citizen, current members are urged to renew now.

- PNWDC**
Columbia Basin (\$9-18)
Ed Yamamoto
Grant City Airport
Moses Lake, Wa 98837
Puyallup Vly (\$15-25)
TC \$22-34; \$30
Hannah Yoshida
3609 Crestview Dr W
Tacoma, Wa 98466
Seattle (\$12-21)
TC \$28-37; \$36
Kimi Nakashishi
8236-16th NE
Seattle 98115
Spokane (\$10-20; 21)
TC \$25-35.50
Max Akayama
S-314 Sheridan
Spokane 99202
- NC-WNDC**
Berkeley (\$11-20;
TC \$27-26; \$37)
Terry Yamashita
1700 Solano Ave
Berkeley, Ca 94707
Contra Costa (\$12-20;
TC \$26.50-36.50)
John Hiramoto
2003 Mira Vista Dr
El Cerrito 94530
Eden Township (\$10-20)
Frank K Fujitani
635 Bluefield
Hayward 94541
Fremont (\$11-20;
TC \$21-25; \$36)
Joseph H Toi
4601 Paseo Padre Pkwy
Fremont 94538
Flordia (\$10-20; \$3)
Catherine Taketa
1324 - 36th St
Sacramento 95819
French Camp (\$10-20)
Hideo Morinaka
612 W Wolfe Rd
French Camp 92331
Livingston (\$9-18)
Leonard Kinoshita
8371 W Olive Ave
Winton, Ca 95388
Monterey (\$12-20)
Joe Nishida
600 Hilby Ave
Seaside, Ca 93955
Oakland (\$11-20; TC \$25-34)
Jim Uchida
569 Hight St
Oakland 94601
Placer City (\$12-20-22.50;
TC \$25-35)
Nobu Hamasaki
111 St Alban Ave
So Pasadena 91030
Grtr Pasadena (\$16-24; \$36)
Janet Kawahara
Reno (\$10-20)
Tom Oki
112 Vassar
Reno 89502
- San Francisco (\$12-20-22.50);**
TC \$25-36; \$33.50
Percy Masaki
2747 Riverside Blvd.
Los Angeles 90032
Sacramento 95818
Salinas (\$11-22)
TC \$22-34; \$30
Ronald Oye
1086 Lupin Dr
Salinas 93901
San Benito (\$14-25)
Frank Nishida
5700 Green Rd
S Jn Bautista 95045
San Francisco (\$12-20)
Frank Minami
1822 - 10th Ave
San Francisco 94122
San Mateo (\$10-20)
Grace Kato
1536 Celeste Dr
San Mateo 94402
Sequoia (\$12-20-22)
TC \$25-37.50; 0/63 \$10-20
Richard Nakashishi
100 Burlingame Ave
Burlingame 94010
Sonoma City (\$10-20;
TC \$25-35)
Frank K Oda
1815 W 3rd St
Santa Rosa 95401
West Valley (\$11-21)
Janet Kaku
P.O. Box 742
Cupertino 95014
- CCDC**
Clovis (\$11-20; \$39)
Tom Kawahara
2013 Arden Dr W
Fresno 93703
Delano (\$10-20; TC \$25-33)
Ben Nagatani
P.O. Box 811
Delano 93218
Fresno (\$10-18)
Frank Nishida
1119 W Escalon
Fresno 93705
Parlier (\$10-20)
Noboru Doi
7603 S Zediker
Parlier 93648
- PSWDC**
Arizona (\$12-24)
Kathy Hilda
5946 W Maryland
Glendale, Az 85301
East L.A. (\$13-22)
111 St Alban Ave
So Pasadena 91030
Grtr Pasadena (\$16-24; \$36)
Janet Kawahara
1235 Sunny Oaks Circle
Altadena 91001
- Metro L.A. (\$15-22, \$310)**
Cynthia Lew
3961 Monterey Rd
Los Angeles 90032
N. San Diego (\$15-29)
Tom Honda
1562 Chestnut
Carlsbad 92008
Orange County (\$15-25;
TC \$23-34)
Betty Oka & Yas Ohta
8888 Garden Grove
Garden Grove 92644
Pasadena (\$15-22)
Aki Kubota
48K - 13th Ave
Salt Lake City 84103
Snake River (\$11-20;
TC \$20-30)
Rt 1
Fruitdale, Ida 83619
- Boise Valley (\$15-20)**
Sam Fujishiro
Rt 1, Homedale 83828
Tok Yamashita
Rt 6, Caldwell 83605
Mt. Olympus (\$11-22;
TC \$25.50-37.50)
Mrs. Yukus Inouye
Rt 2
American Fork, Ut 84003
Salt Lake (\$11-22;
TC \$27.50-35.50)
Aki Kubota
48K - 13th Ave
Salt Lake City 84103
Snake River (\$11-20;
TC \$20-30)
Rt 1
Fruitdale, Ida 83619
- MDC**
Chicago (\$15-25; TC \$30)
Donna Ogura
5413 N Clark
Chicago 60640
Cleveland (\$12-20)
John Shimabukuro
2008 Marda Dr
Cleveland 44134
Dayton (\$12-24)
Yae Sato
1734 Catalpa Dr
Dayton 45406
Milwaukee (\$29-18.50;
TC \$30)
Victor Heinemeyer
3043 N 91st St
Milwaukee 53222
St. Louis (\$12-22)
Grace Takashishi
1014 Longford Dr
St. Louis 63138
Twin Cities (\$12-20)
Kiyoshi Ishibashi
208 Prospect
St Paul 55107
- EDC**
New York \$15-23; TC \$30)
Mike Watabe
4 Live Oak Rd
Norwalk, Ct 06851
Philadelphia (\$12-22;
TC \$35; Jrs \$4)
Hatsumi Harada
2500 Pine St
Phynton 19103
Seabrook (\$10-20; Issei \$7)
Terri Masatani
Rt 3, Silverlake Rd
Bridgton, NJ 08802
Washington, DC (\$10-18;
TC \$28.50)
(To be announced)



Bill Hosokawa

From the Frying Pan

Denver, Colo.

KABUKI ON A COLD NIGHT—The temperature was down around zero, a mighty chilly neighborhood, the other night when we ventured out to see a classical kabuki dance performance by Shozo Sato. Thanks in part to glowing reviews in the local newspapers, the Bonfils Theatre was just about filled for Sato's performance despite the weather. I'd say at an eyeball guess Caucasians outnumbered Japanese Americans about 20 to 1, maybe 25 to 1, and virtually all of the latter were Issei and Nisei.

Sato was born and educated in Japan and has been on the art faculty of the University of Illinois, Champaign-Urbana, since 1964. He teaches painting and appreciation of Oriental art but somehow he gets into other aspects of Japanese culture, too. For example, he has a class in tea ceremony, and of course there is kabuki for which he is perhaps best known in these parts. Sato's performance here was pretty much a solo presentation except for the narration and a little stage help by several of his students.

Sato says he is very pleased with the interest his students are taking in Japanese culture, but disappointed that year after year they include few Japanese Americans. Perhaps most of them, like me, are not turned on by the beauty of kabuki. A little of it may be good for one's aesthetic senses, but a little goes a long way. Nonetheless, his English explanation of kabuki, the meaning of his dance movements and posturing, was an experience well worth the discomfort of venturing into the cold.

A MORE VIOLENT ART FORM—My more intense interests, I must admit, tend to the violent art forms. Like football. Now that the season is over, I've been reading George Plimpton's newest book about professional football, "Mad Ducks and Bears," an extremely entertaining volume about the men who grow old playing football but never quite manage to grow up. In addition to the delightful anecdotes, what caught my eye was a passage on page 219 in which Plimpton tells of attending a reunion of National Football League alumni. There he meets Buck Evans, a Harvard man, class of '23, who had played with the oldtime Chicago Bears. Plimpton writes:

"He had an old Bears game program with him which he had shown me before the meeting. In it was a column of news notes from around the football league, and we had both admired the fact that the Dayton Triangles had a Chinaman playing for them who was called 'Sneeze' Achui."

Ignoring for the moment the racial slur, unintended or not, it is interesting that there was an Oriental large enough and powerful enough to play in a professional football league. Of more recent vintage, a Nisei, Seiki (Zeke) Muroto played a very effective quarterback for the Long Island Bulls, a New York Giants farm club in the Atlantic Coast Football League. At 5-11 and 185 pounds, he played at Franklin and Marshall College in Pennsylvania. He made Phi Beta Kappa, was accepted by the Chase Manhattan bank as a management trainee, and played semi-pro football for the fun of it. The last time I saw Tooru Kanazawa in New York, he said he had been intending to write a story about Muroto, but hadn't gotten around to it.

THE HARD LOT OF ENVIRONMENTALISTS—

Friends of mine telephoned the other day to ask how he should go about contacting Japanese trading firms. I gave him a few names, then asked what he was interested in. "Hydraulic fluid," he said, "the stuff they put into cars and trucks. The Japanese make the best there is, particularly for cold climates."

His voice turned conspiratorial. "Do you know why? They put whale oil in hydraulic fluid for cold weather. It keeps the oil from freezing up, and the Japanese are the only people killing whales these days."

Honest, that's what he said, and I wondered about the hard lot of environmentalists who certainly are aware that the oil of endangered whales may be used to operate the vehicles that will exploit Alaska North Slope petroleum fields.

On the Margin

By Kats Kunitzugu

BOUTIQUE WITH A JAPANESE ACCENT

Los Angeles
What's a nice girl with a full-length sable coat and a 10-carat diamond ring doing on the selling side of the counter of a chic boutique in Beverly Hills?

Lending credibility to the \$80 blouses and the \$135 purses for one thing and saving her friends from listening to her time to "settle down" naturally before being cut and sewn.

Although not apparent to the untrained eye, the fine gauge of the knits are even finer in the skirts and pants of two-piece outfits to help keep their shape and increase wear. Metabolism care is lavished on details, such as linking the seams stitch by stitch, rather than overlocking. Linking preserves the natural resilience of knits. Hand casting is done in the finishing process, even in places like the back of button holes which don't show.

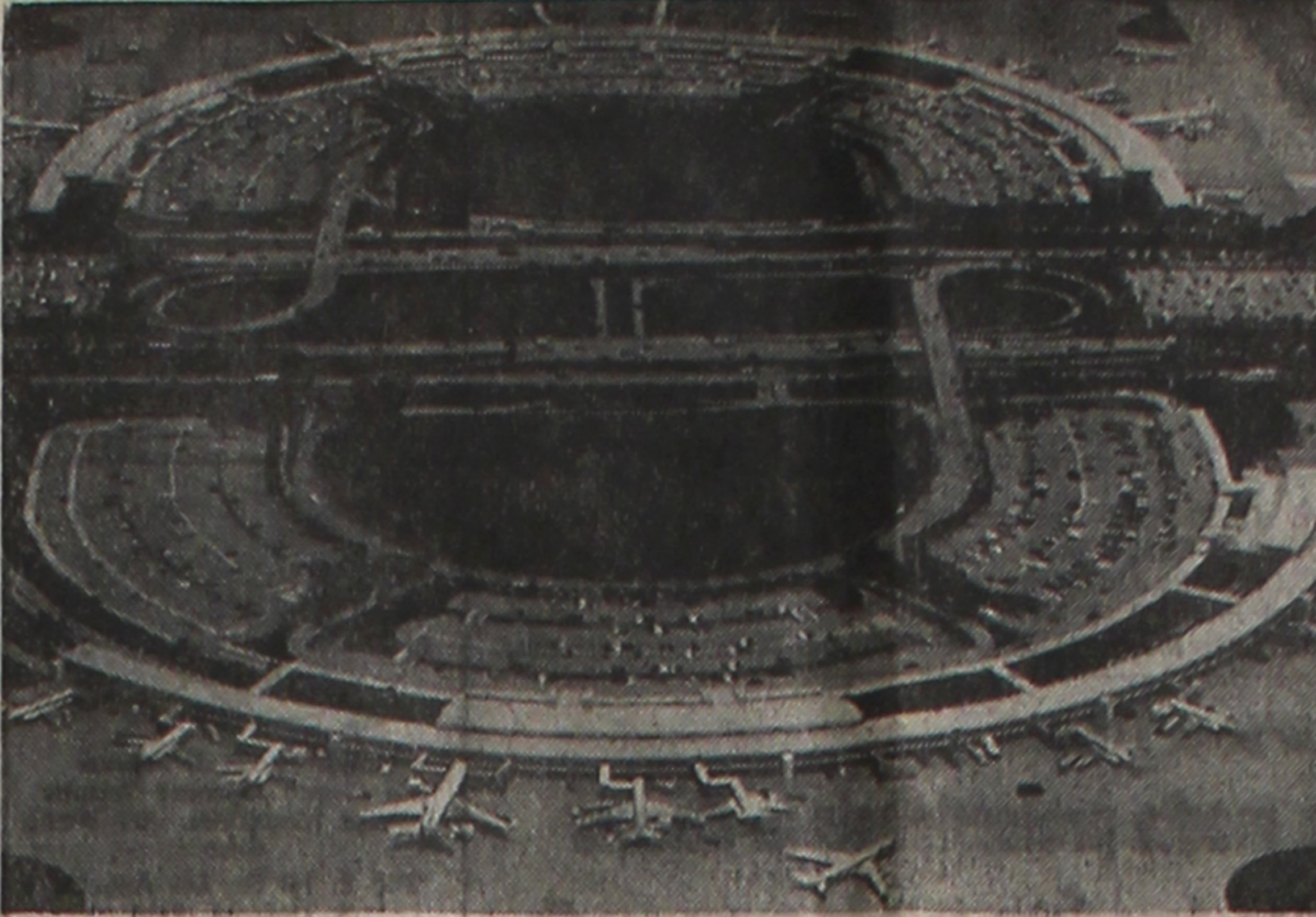
All zippers are invisible and beautifully handtacked in the back. Jackets are lined with special material in which the "Paris" trademark is discreetly woven in the design. All this Kazu told us in her rapid-fire Osaka-ben, as we looked with more interest than money. With two kids in college, we are constantly praying that no major appliance will break down and the car will hit 200,000 miles before giving up the ghost.

Kazu's boss is also from Osaka, with the Osaka merchant's frank and undissembled interest in money-making. Listening to Kazu's account of how they run the little Japanese boutique in Beverly Hills is like listening to a "Daikoku no Hana" type of comedy.

The woolen yarn is imported from Lancashire, England. A process called top dyeing—in contrast to yarn dyeing or piece dyeing—is used so that the least damage to the strength and resilience of the yarn is caused by the dyeing process. The yarn is then knitted in the almost completely automated mills of Takii and Co. The finished fabric is given

Happiness isn't something you experience, it's something you remember.

—Oscar Levant



DALLAS-FT. WORTH—A full loop of the world's largest airport, which went into regular operation Jan. 13, at Dallas-Ft. Worth, shows the two terminal buildings with the spine roadway in the middle. Photo is a \$36,000 mock-up of the airport on display at the airport offices.

World's largest air terminal opens, designed by Gyo Obata

GRAPEVINE, Texas — The \$700-million Dallas-Ft. Worth Airport, designed by Nisei architect Gyo Obata of St. Louis, was officially opened when a flight from Memphis touched down a little past midnight on Jan. 13. Several hours later, the first flight took off for Los Angeles.

The world's largest airport took 10 years in planning and construction. Situated on 17,400 acres of Texas prairie (larger than the island of Manhattan), the airport was dedicated last September with a huge ceremony but regularly scheduled flights in and out did not commence until Jan. 13.

It was not an easy job to design Dallas-Ft. Worth with an ultimate capacity of 250 passenger gates and 200 cargo gates — considering the fact that three airports serving New York City — LaGuardia, Kennedy and Newark — combined have only about 100 gates.

A distinguishing feature, as one flies into Dallas-Ft. Worth, are the four loop terminals, which can be joined by nine more. Each half-loop can serve 18 jumbo jets. The semi-circular design eliminated the problems of building parking decks atop a long terminal building, which had been originally proposed.

Each terminal has been divided by three concentric segments—an arrival-departure front, a main lobby ring (big enough to include three basketball courts and accommodate up to 1,000 people per airline) and the gate-to-runway perimeter. Vertically, airlines have space below for operations and an automated passenger-baggage transit sys-

tem, interconnecting all 66 boarding gate areas per terminal.

Main access from either Ft. Worth or Dallas, each about 17 miles away, is by way of a nine-mile long, north-south International Parkway which slices the airport in half.

While buses to and from the airport from both cities are in service, there is parking for over 20,000 cars, half of them to be inside the terminal loop — so that the amount of walking for a passenger from his automobile to the plane is but a scant 300 feet, less than the walk within a Boeing 747 jet from front to rear.

There are 13 miles of guideways for the automated transit system, linking the parking lots and terminals. By contrast, the walk at O'Hare can subject passengers to hikes of up to a mile.

Obata noted that the massive tract of land provided the decentralized concept, giving the airport an uncrowded, more human look. His critics suspect the design will prove to be a concrete and glass wasteland stretching to the horizon. But Obata also warned the new jetport under construction at Houston will soon feel the pinch of too little land and too much concentration.

The airport opened with three runways, two north-south and one crosswind. The cargo areas are laid out at both ends of the airport. Some of the world's greatest architects, noted the Dallas Times-Herald, are ecstatic over the uniqueness of the D-FW design. The super airport with its time-saving terminals is a prototype for all new airports in the future. The facilities are capable of handling more than 8 million passengers in the first year and up to 15 million by 1980.

Chinese —

Continued from Front Page

ity students "in order to open its instructional program to these students."

Potter decided HEW had acted within its authority and was backed by Chief Justice Warren E. Burger and Justice Harry A. Blackmun.

The ruling reversed the U.S. District Court and U.S. Court of Appeals in San Francisco, which had found that the city had done all required by the Constitution and the Civil Rights Act by making instruction available to the Chinese students.

The Chinatown Office of the S.F. Neighborhood Legal Assistance Foundation carried the class-action case for the plaintiffs.

Allis-Chalmers found guilty of race bias

SEATTLE — The State Human Rights Commission found Allis-Chalmers Corp. in violation of the unfair employment practices act in the case of Matthew M. Seto, 51, of Seattle.

Seto had complained in January, 1973, with the commission the firm had discriminated against him on the basis of race and age. A conciliation agreement has been reported and Allis-Chalmers is expected to develop a new "ambitious affirmative action program" within 30 days.

Response to an Ad Means Another Ad!

FREE FILM

Honest. All you need to get your free roll of Fujicolor 126 Instant load (12-exposure) film is to fill out the coupon below and send it in to us with 25c for each roll wanted to cover return postage and handling. (Limit 3 rolls per customer).

You see, we know that if you get your first roll of Fujicolor film free, you'll be happy to pay for the extra special pleasure of Japanese color for the rest of your life.

SPECIAL OFFER

If you use slide film or 35mm film check type wanted and send only 50c per roll. (Limit 3 rolls per customer).
☐ 126-20 slide films. ☐ 135-20 slide film. ☐ 135-20 color print film. ☐ 120 color print film.

Send Correct Amount to:

AUTHORIZED FUJI LAB
P. O. Box 2370
Salt Lake City, Utah 84110

Hurry! Offer Expires Mar. 1, 1974

SEND FREE FILMS TO:

Name _____
Street _____
City _____
State _____
Zip _____

Odds favor use of geothermal power by Hawaiians

HONOLULU — Dr. Patrick K. Takahashi, engineering professor at the Univ. of Hawaii and a specialist in alternate forms of energy, suggested that chances are good that geothermal energy will be produced and used in Hawaii. "It's the only natural source of energy for the State," he told the Oahu Chapter of the Pacific and Asian Affairs Council recently.

Takahashi also said geothermal energy might be an export product for Hawaii if it can be used to produce hydrogen and oxygen.

Takahashi said that although the Arabs are partially responsible for the energy crisis, there were several other reasons, too.

"The Federal government has always been wishy-washy on new energy research," Takahashi said, adding that the price of energy was held so artificially low that industry was not encouraged to explore new sources of energy.

Takahashi also believed that it was important to keep perspectives on the energy shortage, and reminded that the United States, which has five per cent of the world's population, uses 33 per cent of the world's energy. "Today 12 per cent of our energy is imported," he said. "In 1985, that's going to be around 30 per cent." He added that for that reason, the country is lucky the crisis occurred today instead of 12 years later.

Takahashi also said that coal will pick up over the next 30 years as an energy source, and that by the year 2000 geothermal energy could produce as much energy as the U. S. produces by other means today.

But he said he holds out greater expectations for the use of atomic energy for the future of the world, especially a technique called laser fusion.

"Laser fusion looks like the future of energy," Takahashi said. "He said that fusion energy could satisfy world energy needs for the next five billion years."

Takasugi—
Continued from Front Page

who retired July 10. The Tacoma-born Nisei attended high school and college in Los Angeles, graduating in law from USC. He also served as National JACL legal counsel for the 1971-72 term.

Education in Samoa 'very inadequate'

WASHINGTON — Rep. Patsy Mink described the educational system in American Samoa as "very, very inadequate." She was a member of the House subcommittee on territories which completed a four-day survey during the recent congressional break.

The problem stems from a federal decision made about eight years ago to make educational TV the primary means of schooling in the islands and "it hasn't worked," she said.

In Honolulu, former education officials on American Samoa defended the heavy use of TV in the classroom.

Faced with the lack of qualified teachers, there was a good use — economics — for beaming TV in the classrooms, noted Stewart Chieft, manager of the ETV system from September 1971 to November 1973. Today, TV is used as a supplement for a real teacher, added Milton DeMello, former director of education in American Samoa from 1970-1973.

LITTLE TOKYO TOWERS

APPLICATIONS NOW DUE

LOS ANGELES — Applications of Issei living outside Little Tokyo were strongly urged, even though the application forms are no longer appearing in the local Japanese vernaculars, for what may be the priority list for a unit in Little Tokyo Towers.

The Little Tokyo Redevelopment Project office, 324 E. 1st St., was accepting applications in person or by mail until Jan. 31.

"It is important that interested senior citizens sign up for housing now, since this may be the only time Little Tokyo Towers will publicly request applications," said Rintan Horyu Ito of Higashi Hongwanji, member of Little Tokyo Towers board of directors.

Senior citizens who fear their income is too high are also encouraged to sign up as they may qualify later since government regulations change from time to time, Rintan Ito explained.

Encampment program for 1974 announced

NEW YORK — The 1974 summer encampment for Citizenship for youth, 15-18, will be held this summer in Denver and New York. Supported by JACL since it was founded in 1946, applications are now being accepted at:
Encampment for Citizenship, 2 W 64th St., New York, N.Y. 10023.

Seattle DPAA gets HEW \$97,000 grant to aid local Asians

SEATTLE, Wash. — The Dept. of Health, Education and Welfare awarded a \$97,000 grant to the Seattle Demonstration Project for Asian Americans, it was announced by Richard A. Grant, regional HEW official here.

Funded through October, 1974, the project "aims to show that an Asian American staff comprising those who have already succeeded in adjusting to the general American society and culture can develop programs and services that will bring other Asian Americans into the mainstream of society," Grant explained.

Teuguo Ikeda, Atlantic St. Center director, will be financial manager of the project. Donald Kazama is chairman of its policy board.

The project will also focus on the special needs of Asian wives of American servicemen and the Asian immigrant medical professional.

About 3,500 Asian women, mostly from Korea, live in the Puget Sound area, either deserted or divorced by their husbands and experiencing language and cultural activities have turned to prostitution and a similar subcultural activities for a livelihood.

A significant number of health professionals, licensed to practice in their native countries, are either unemployed or underemployed here in the U.S. Many of them hail from the Philippines.

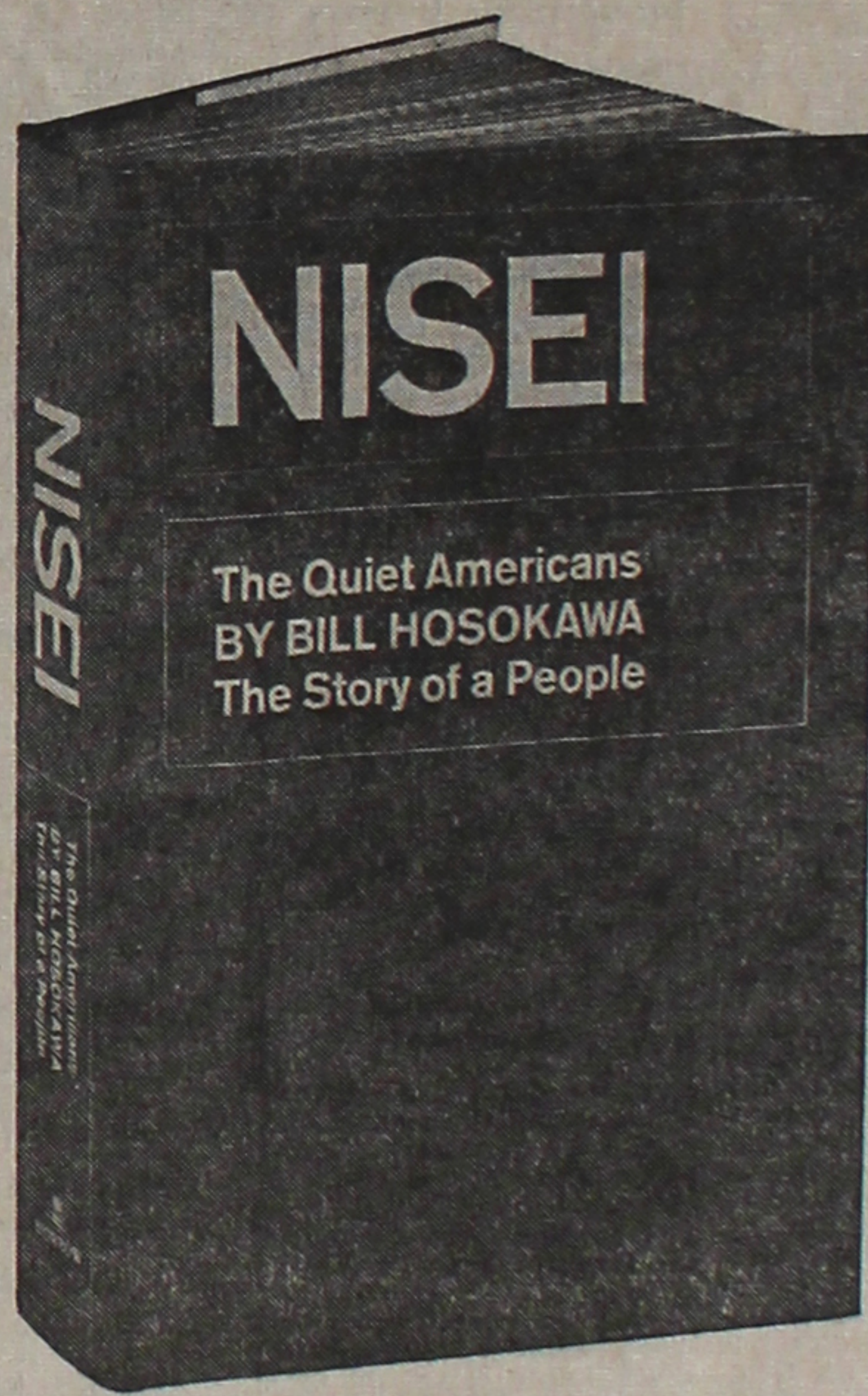
Japan Custom mistaken for holdup try: Face Mask

SAN FRANCISCO — Kazuo Kajimura, a Japanese national working as an American newsman, created quite a stir when he went into the bank wearing a face mask.

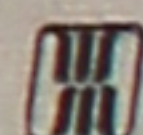
"Kaz" suffering the miseries, was following the custom of his homeland. Traditionally in Japan, it is the custom to wear a mask when afflicted with a cold.

Sumitomo Bank

SAN FRANCISCO — Sumitomo Bank of California will construct its West Los Angeles branch at Santa Monica Blvd. and Corbin, according to bank president Ichihya Kumagai, with operation expected to commence in the fall.



Now in a Revised
Paperback Edition
at \$3.95



William Morrow & Company, Inc.
Publishers

544 pages—
100 black and white photographs.

Dedicated to the Issei "who made it all possible."

This distinguished work commemorates and records the heritage, the ordeals, and the splendid triumphs of all Japanese Americans during the past 100 years.

It is a book deserving of a place of honor in your home—a book your children and their children will read some day with great pride and pleasure.

Japanese Edition (\$13.50 list price)

List price: \$10.95 (Hard cover edition)

Special price to subscribers of this paper \$9.00 with coupon below.

"... an eloquent contribution to the classic immigrant story that focuses on a small but not insignificant segment of the American people."
—William Hogan, San Francisco Chronicle

"... the most searching and dramatic inquiry into the genesis of the evacuation program."
—Gladwin Hill, New York Times Book Review

"... a well-reasoned and eminently readable history which might well be a required textbook for Japanese Americans in search of their heritage."
—Ray Inouye, Seattle Times

PACIFIC CITIZEN
125 Weller St., Los Angeles, Calif. 90012

Please send _____ copies of NISEI @ \$9.00. (Hardcover)

Paperback (\$4.30 postpaid) Enclosed \$ _____
Japanese Edition (\$12 postpaid with coupon)

Name _____

Address _____

City, State, Zip _____

Limited number of copies (Japanese edition) are also available at National JACL Headquarters and with following JACL chapters: Chicago, Cincinnati, Dayton, Milwaukee, St. Louis and Twin Cities.

1974 Officers

ALAMEDA JACL

Kent Takeda, pres.; Ray Hamaguchi, Mrs. Sachiko Nakamura, v.p.; Yasuo Yamashita, treas.; Mrs. Cheryl Hayama, sec.; Haj Furumori, Blue Cross; bd memb.—Ed Funasaki, Allen Hanamura, Mrs. Mary Hanamura, Mrs. Meri Ikeda, Shig Imazumi, Ernie Imura, Roland Kadonaga, Don Kuge, Tates Hanamura, Janis Kuruma, Kay Sato, Nancy Tajima, Mrs. Neille Takeda, Mrs. Toshi Takeda, Jug Takeda, Gordon Takeda, George Ushijima, Hi Akagi.

CLEVELAND JACL

Dr. Toaru Ishiyama, chmn.; Sharon Shintaku, sec.; John Shimabukuro, treas.; bd memb.—Roy Andow, Noboru Asamoto, Stephen Fujita, Takao Kunimoto, Robert Maki, Alice Nakao, Thomas Nakashige, Sally Takeda, William Tashima.

CLEVELAND JR. JACL

Rick Takiguchi, Wendy Furukawa, co-chmn.; Tom Nakao, Sharon Inouye, v.p.; Cori Doh, sec.; Rick Shimabukuro, treas.; Donald Hashiguchi, hist.

CORTEZ JACL

Gerald Yotsuya, pres.; Alvin Hagihara, v.p.; Nobuo Baba, treas.; Yuse Yuse, sec.; Mrs. Harry Kajioka, cor. sec.; Mrs. Peter Yamamoto, social; Mrs. Howard Tanihara, pub. rel.; Mrs. Kiyoshi Asai, hist.; Fred Kajioka, Ben Kumimoto, orchard; Stanley Fidel, grounds sup.; Yoko Asai, Boy Scout rep.; Jim Yamaguchi, insurance; Mrs. Kiyoshi Yamamoto, scholarship; Kazumichi Kajioka, custodian; Mrs. George Shiyomura, human relations; Sam Kuwahara, bldg. and orchard; H. W. a. r. d. Taniguchi, Harry Kajioka, bldg. and orchard; Frank Yoshida, Livingston Comm Health Ctr rep.

DETROIT JACL

Minoru Togasaki, chmn.; Sud Kimoto, chmn.-elect; Mary Kamidol, treas.; Tom Satow, sec.; Alice Hashimoto, Sally Higashi, Satoko Poster, Elaine Akagi, bd memb.

DETROIT JAYS

Paul Teshima, pres.; Faye Hirogawa, Steve Shimoura, v.p.; Karen Yamauchi, treas.; Tina Lee, hist.

FRESNO SCIENS (JAYS)

Bev Kondro, pres.; Al Fujisuzo, v.p.; Teri Yamamoto, sec.; Susan Doh, treas.; Robert Miyake, hist.

MILWAUKEE JACL

Tak Kataoka, chmn.; Victor Heinemeyer, v.p.; David Somod, treas.; Roy Maki, sec.; Eddie Jonokuchi, 1000 Club; Charlie Matsumoto, Folk Fair; Jennett Tada, educ.; Andy Hasegawa, ex-officio; Dave Allen, Paul Kankawa, youth; Lucille Miyazaki, newslet; bd memb.—Tom Sasaki, M. Kimi Johnson, John Sander, Meredith Kamikawa, Reid Allen.

MT. OLYMPUS JACL

Tosh Hokki, pres.; Yas Tokita, Mary Inouye, v.p.; Ron Mano, treas.; Betty Morishita, cor. sec.; Tak Iwanoto, Lou Nakagawa, Minoru Matsumori, Ken Nodzu, directors; Momoko Ushio, hospital-ity; Shake Ushio, 1000 Club; Helen Oniki, hist.; Harriet Nishizaka, cheer comm.; Bob Moriguchi, newsletter; Harriet Nishizaka, schol.; bd memb.—Jim Gozawa, Taro Ishimoto, Bob Ives, John Kaneko, Joan Kawato, Tom Komatsu, Key Nakagiri, Amy Niwa, Sam Ueyehara, Spencer Yamada, Don Yamaka.

RENO JACL

Kiyoshi Hase, pres.; David Baba, v.p.; Tom Oki, treas.; Ava Ichimoto, sec.; Phil Shigekuni, pres.; Mitzi Kusuda, 1st v.p.; Mas Nakazawa, 2nd v.p.; Arnold Hagihara, treas.; Carol Takamoto, sec.; Alice Morita, cor. sec.; Alice Isawa, memb.; Pat Ball, pub. rel.; Fred Muto, 1000 Club; Hiroshi Shimizu, del.; Ron Yoshida, hist.; John Nishizaka, cheer comm.; Bob Moriguchi, newsletter; Harriet Nishizaka, schol.; bd memb.—Jim Gozawa, Taro Ishimoto, Bob Ives, John Kaneko, Joan Kawato, Tom Komatsu, Key Nakagiri, Amy Niwa, Sam Ueyehara, Spencer Yamada, Don Yamaka.

SALINAS VALLEY JACL

Tom Miyahara, pres.; Lester Dacus, Dr. Ronald Oye, v.p.; Akira Aoyama, treas.; Larry Morigawa, cor. sec.; Mrs. Janice Higashi, Mrs. Doris Yamamoto, cor. sec.; Mrs. Jeanne Miyahara, del.; Jim Uyeda, alt. del.; Mrs. Tei Dacus, hist.; visitation chmn.; bd of dir.—Sam Tashiro, Andy Matsumori, Robert Kikaji, Harvey Kitamura, Harry Shirachi.

SALT LAKE JACL

Ted Nagata, pres.; Al Kubota, Gene Sato, Fred Tamagawa, v.p.; Sadao Nagata, treas.; Pat Nakaya, sec.; Chiz Ishimatsu, v.p.; Mildred Coulam, hist.; Tom Sutow, ex-officio; Rae Fujimoto, Bill Mizuno, bd memb.

CALENDAR

Feb. 1 (Friday)
Seattle—Inst dnr. Bush Gardens, 7:30 p.m.; Dean Charles Z. Smith, UW Law School, spkr.
Feb. 2 (Saturday)
Contra Costa—Inst dnr. Marco Polo restaurant, Oakland, 7 p.m.; George Takai, spkr.
El Louis—Inst dnr. Luigi's west, 7 p.m.; Dr. Lindbergh Sata of Seattle, spkr.
Feb. 9 (Saturday)
West Valley—Inst dnr. Detroit—Inst dnr. dnr. Peking House, Royal Oak, 6 p.m.

(PAID ANNOUNCEMENT)

★ February 9 (Sat.)
28th annual
DETROIT JACL
INSTALLATION
DINNER-DANCE

Peking House Restaurant
215 S. Washington
Royal Oak, Mich.
6 p.m. Cocktails Adults \$7.50
7 p.m. Dinner Students 6.50
Live Entertainment
The Amplifones Band

Feb. 10 (Sunday)
NC-WNDC—Exec Bd Mtg.
Sacramento—Inst dnr. Sacramento Inn

Feb. 12 (Tuesday)
Sequoia—Bd mtg. Palo Alto
Buddhist Church, 7:30 p.m.
New York—Bd mtg. Ron Inouye's res, 7:30 p.m.
Milwaukee—Bd mtg.

Feb. 16 (Saturday)
New York—Media seminar.
Feb. 17 (Sunday)
CCDC—Dist Mtg. Delano JACL hosts.

Philadelphia—Gen Mtg. Bryn Mawr College.
Feb. 22-24
Nat'l JACL—Bd Mtg. San Francisco.

Feb. 23 (Saturday)
Nat'l JACL—Cred Union ann dnr. Prudential Plaza, Salt Lake City, 7 p.m.
San Francisco—Schol Benefit Night, Night at Races, Bay Meadows.

Feb. 24 (Sunday)
Santa Maria—Chicken teriyaki benefit.
★ JACL chapters are invited to publish their announcements in the "Calendar" column at \$3 per column inch.

ALAMEDA JACL

Chapter's youngest prexy installed

By ROLAND KADONAGA

Alameda JACL installed its youngest president in Kent Takeda at its annual dinner in December before a large turnout of 150 members, friends and guests. A recent graduate of UC Berkeley with a master's in business administration, Takeda is supervisor in public relations and information with Pacific Telephone.

The 1974 board was sworn in by David Ushio, who also doubled as main speaker relating his first year of experience as national JACL executive director.

As he met with many chapters and members, Ushio said he was impressed with the talent and expertise that abounds with the chapter members; also, the deep commitments of the members to the JACL and through the organization to work to better the society.

He sees the emergence of the Sanele in the chapters and in the whole structure of the JACL, thus bringing a wider range of attitudes. This should provide more heated discussions and debates on issues and programs and from this better decision and programs, he declared.

It is important that JACL sees that the contributions of the Japanese to America be recorded accurately to perpetuate the cultural heritage of the Japanese.

He also stated that JACL should work to assure the Sanele have equal opportunities, and that JACL work to open these opportunities for them.

Ushio described the programs in the works for JACL, such as an exchange program with the Japanese students; internship of Sanele to work with Government officials in Washington, D.C., and opportunities to attend the 8-10 day seminars with the high Government officials.

In his talk with Professor Edwin O. Reischauer, Ushio was told that the Japanese Americans are unique. Persecuted from the time of their arrival, put into camps, and to advance as far as they have; but Japanese Americans have not used their full potentials, Dr. Reischauer noted. The organization like the JACL can be the instrument to provide the opportunities in order to extract the full potentials.

Honored guests in attendance were:

Mayor and Mrs. Terry La Croix Jr. and Mrs. David Ushio, Rev. and Mrs. Emery Fleming Jr., Rev. and Mrs. H. E. Peralo, Mr. and Mrs. Donald Bell, Mr. and Mrs. Abe Korman, Mr. and Mrs. N.

Matsui (Bank of Tokyo), Mr. and Mrs. Minoru Uyeda (Bank of Sumitomo), Mr. and Mrs. Mas Sato, and Mrs. Beatrice Kono, Berkeley JACL pres.

Al Koshiyama did a masterful job of keeping the program moving as master of ceremonies. The success of the evening was due to thorough arrangements made by Mrs. Toshi Takeoka.

Retired Alameda High School principal Donald Bell presented the chapter scholarships to Philip Hanamura and Ruth Yamawaki.

George Ushijima announced special awards for:

Silver Pin—Mrs. Toshi Takeoka, Hi Akagi.
Sapphire Pin—Shiro Takeshita, Membership Scroll—Mrs. Meri Ikeda, 10th consecutive year of increased membership.

George Ushijima announced special awards for:

Silver Pin—Mrs. Toshi Takeoka, Hi Akagi.
Sapphire Pin—Shiro Takeshita, Membership Scroll—Mrs. Meri Ikeda, 10th consecutive year of increased membership.

George Ushijima announced special awards for:

Silver Pin—Mrs. Toshi Takeoka, Hi Akagi.
Sapphire Pin—Shiro Takeshita, Membership Scroll—Mrs. Meri Ikeda, 10th consecutive year of increased membership.

George Ushijima announced special awards for:

Silver Pin—Mrs. Toshi Takeoka, Hi Akagi.
Sapphire Pin—Shiro Takeshita, Membership Scroll—Mrs. Meri Ikeda, 10th consecutive year of increased membership.

George Ushijima announced special awards for:

Silver Pin—Mrs. Toshi Takeoka, Hi Akagi.
Sapphire Pin—Shiro Takeshita, Membership Scroll—Mrs. Meri Ikeda, 10th consecutive year of increased membership.

George Ushijima announced special awards for:

Silver Pin—Mrs. Toshi Takeoka, Hi Akagi.
Sapphire Pin—Shiro Takeshita, Membership Scroll—Mrs. Meri Ikeda, 10th consecutive year of increased membership.

CHAPTER PULSE

Installation

Sacramento to hear Gardena Assemblyman

Assemblyman Paul T. Bannai is scheduled to speak at the Feb. 10 annual installation banquet of the Sacramento JACL at the Martingale Room of the Sacramento Inn. His topic will be "Japanese Americans in Politics." President-elect Roy Imura and his cabinet for 1974 will be installed.

Boise Valley joins Snake River inaugural

Boise Valley and Snake River Valley JACL chapters have held joint installation dinners for many years, each taking turns hosting the event. The 1974 turn was Snake River's, held Jan. 26 at East Side Cafe in Ontario.

Dr. Eugene Furuyama, asst. professor of mathematics at Boise State College, was guest speaker. Tom Uriu was emcee and Jack Ogami, IDC vice-governor, was installing officer.

December Events

Watsonville Issei Center issues '73 summary

Watsonville JACL-sponsored Issei Center director Tom Kizuka summarized the center's program, noting 44 weekly meetings were held with an average turnout of 30, eighteen parties were programmed and a balance of \$597.49 is in the treasury. Donations amounted to \$3,393.95 and expenditures (mostly for chartering buses, birthday cakes, admission fees for group tours) came to \$3,315.59.

The chapter pays the house rent, utilities and repairs and has purchased such household items as tables, heaters, etc.

November Events

Milwaukee bonsai booth wins Folk Fair prize

Milwaukee JACL's bonsai exhibit booth at the Nov. 18-18 Folk Fair won the \$500 prize towards a charity designated by the winner. The chapter board subsequently named the Assn. for Mentally Retarded Children and International Institute as awardees.

Chick Tanouye and Victor Heinemeyer spent many hours demonstrating the art. The booth was artistically designed and decorated by Hank Date. An appealing addition here was the little table with kimono-clad youngsters showing the art of origami.

Charles Matsumoto, chapter's Folk Fair chairman, reported their success was highlighted by "fish in bottle" project headed by Helen Jonokuchi of the Ladies Club, the saimin booth by the JAYS, and the adult group performing the Tanko Bushi.

Clevelanders support Holiday Fair all-out

All-out effort and support of the community marked the success of Cleveland JACL's participation in the Nov. 10 Holiday Fair at Euclid Central Jr. High School, according to event chairman Helen Shim.

Proceeds from this annual event support the chapter scholarship program and other multifaceted works of the chapter. Measuring in the success were workers and contributions made toward the sale of food, baked items, handcrafts, flowers and plants, Japanese imports and odds and ends. There were also cultural aspects with calligraphy and entertainment to round out the Holiday Fair.

Brotherhood Regards

J. C. PENNEY'S

2200 S. Atlantic Blvd.
Monterey Park, Calif.

VALLEY MOTEL

250 W. Valley
San Gabriel, Calif.
289-4191
BankAmericard Master Charge

Living Waters Tabernacle
115 W. Newmark Ave.
Monterey Park, Calif.
573-1818



MT. OLYMPUS—Intermountain District immediate past Governor Shake Ushio (left) installs a part of the 1974 Mt. Olympus JACL officers Dec. 3 at South Seas. They are (from left): Tosh Hokki, pres.; Yas Tokita, Mary Inouye, v.p.; Betty Morishita, cor. sec.; Minoru Matsumori, director.

NEW YORK JACL

Six media professionals to discuss Asian American role in mass media

Six professionals with varied backgrounds from the metropolitan area will be focusing on "Mass Media — The Asian American Role?" The panel and discussion are set for Saturday, Feb. 16 at the Peking Park Restaurant in mid-Manhattan at 40th Street and Park Avenue. A Chinese buffet dinner at 6 p.m. will precede the meeting which commences at 7:30.

Spearheading the panel discussion will be:

Dick Akagi, an independent public relations and promotions consultant, who previously worked at Look Magazine in Sports Promotion;

Frank Ching, copy editor of the foreign news desk of The New York Times, and Editor of Bridge Magazine, an Asian American periodical;

Richard Itanaga, marketing services manager of a division of Metromedia, Inc., and previously, promotion chief of The Washington Post;

Michio Kaku, chairman of Asian Americans for Fair Media and a professor at City University of N.Y.;

Edwin McDowell, a member of The Wall Street Journal's editorial page staff and whose recent column centered upon corporate social responsibility in Japan; and

Joan Shigekawa, producer and reporter for "The 51st State," a nightly news show for WNET-Channel 13, who is also doing a special with Ms. Magazine.

The discussion will be moderated by Dr. Leslie Hiraoka, public relations chairman of the N.Y. Chapter.

According to Hiraoka, the topics for the meeting are not firm but will probably center on image creation of the American media, employment opportunities for Asian Americans, and the possible formation of an anti-defamation league.

Hiraoka hopes that the meeting will increase the political awareness of the membership and plans to induce participation by the members who are interested in any concrete proposals which come out of the discussion.

Prior to the media meeting, members and guests can unwind during a no-host cocktail hour (5-6 p.m.) to be served with five appetizers. The buffet Chinese dinner will begin at six and will surround the following entrees: shrimp and hot spicy ginger sauce, beef and snow

Tomasino's Italian Food

Spaghetti - Lasagna - Ravioli
Beer - Soft Drinks

5444 La Palma Ave.
La Palma, Calif.
821-8220

CALIFORNIA DIVORCE COUNCIL

Complete Divorce \$55

2211 S. Atlantic
Monterey Park, Calif.
264-5982

CHENG'S KITCHEN

Fine Oriental Food
for the
Entire Family

8951 Walker
Cypress, Calif.
527-7849

DOG LODGE

Boarding - Bathing - Grooming
Professional Dog Handling
All Breeds - Puppies
Stud Service - Accessories
Valerom Kerry Blue Terriers

1551 W. Lambert Rd.
La Habra, Calif.
691-1152

googies

the Soho Pub
Dining - Dancing - Entertainment
Specializing in
Margaritas and Mixed Drinks
Happy Hour from 4 to 6:30 p.m. daily
Come in and Meet Genial Bartenders
PAT and AL

2080 S. Atlantic Blvd.
Monterey Park, Calif. 685-8218

Brotherhood Regards

EMELO'S BARBER SHOP
Open 9 to 7 Sat 8 to 6
805 S. Atlantic Blvd.
Monterey Park, Calif.
576-9027

Marutama Co. Inc.
Fish Cake Manufacturer
Los Angeles

Amurka
Largest Stock of Popular
and Classic Japanese Records
Japanese Magazines, Art Books,
Gifts
340 E. 1st St., Los Angeles
S. Ueyama, Prop.

CAMPBELL'S flowers
Across from St. John's Hosp.
2032 Santa Monica Blvd.
Santa Monica, Calif.
Mary & George Ishizuka 828-0911

LYNDY'S
926 S. Beach Bl.
Anaheim, Calif. JA 7-5176
Harold Goertzen
Res. Mgr.
Between Disneyland and
Knott's Berry Farm

Stock and Bonds
ALL EXCHANGES
Fred Funakoshi
Reports and Studies
Available on Request
KAWANO & CO.
Memb: Pac Coast Stk Exch.
626 Wilshire Blvd.
Los Angeles 680-2350
Res. Phone: 261-4422

GLENDORA LAPIDARY
Rocks - Jewelry
227 W. Foothill
Glendora, Calif.
963-5414

PATTERSON CHEVROLET
Sales - Service - Parts - Leasing
Top Rated Service Department
15737 E. Imperial Hwy.
La Mirada, Calif. 943-7111

DISCOUNT BUILDERS SUPPLY
3 Locations for All Your Building Needs
1839 S. Durfee, S. El Monte, Calif. 444-2635
128 W. Lemon, Monrovia, Calif. 357-2547
1030 W. Gladstone, Azusa, Calif. 334-0207

REPUBLIC FEDERAL SAVINGS
9200 E. Slauson
Pico Rivera, Calif. 699-1031

AMERICAN FOREST PRODUCTS
14103 Park Place
Cerritos, Calif. 926-2346

BOB & JOHN'S SERVICE
Finest Mechanic in the San Gabriel Valley on Duty.
Foreign - Domestic - Diesel - Tune-Ups - Oil Changes
Tires - Brakes - Transmissions
16677 Arrow Hwy.
Azusa, Calif. 334-5015

GOULD MUSIC CO.
Pianos & Organs & Lessons
410 N. Azusa Ave.
West Covina, Calif. 331-0877

ORVIN ENGINEERING
251 W. Imperial Hwy.
La Habra, Calif. 691-0884

GLENDORA TRAVEL SERVICE
231 S. Glendora Ave.
Glendora, Calif. 963-6061

PETE'S AUTO PARTS
2333 South Garfield Blvd.
Monterey Park, Calif. 728-7111

Naomi's Dress Shop
Sport & Casual, Sizes 3-18
116 N. San Pedro St.
Los Angeles 680-1533
Open Tue-Fri 9:30-6:30 and
Sat 11-9, Closed Sun-Mon

KANEMASA Brand
Available at Your
Favorite Shopping Center
FUJIMOTO & CO.
302-306 S. 4th West
Salt Lake City, Utah

QUON BROTHERS
GRAND STAR
Lunch • Dinner • Cocktails
Entertainment
4 TIME WINNER OF THE PRIZED
RESTAURANT WRITER AWARD
BANQUETS TO 200
943 N. Broadway Free Parking
In New Chinatown • 626-2225

New Ginza
RESTAURANT
Luncheon • Dinner
Cocktails
TAKE-OUT LUNCHEONS
Group Parties
704 S. SPRING • Res. MA 5-2444

CATHAY DE GRANDE
A CHINESE RESTAURANT FOR THOSE
WHO WANT TO ENJOY THE REAL
CHINESE FOOD
JOIN US FOR
Chinese New Year • The Year of the Tiger
Ask for Our Special Dinner or Banquet
Good through the Month of January
Lunch • Dinner • Cocktails • Take Out Orders
We Are Open 7 Days

1600 No. Argyle Ave., Hollywood, Calif. 90028
Phone (213) 461-4077

The New Moon
Banquet Rooms available
for small or large groups

912 So. San Pedro St., Los Angeles MA 2-1091

Sambi
OF TOKYO
Exquisite Dining - Finest Japanese Food - Excellent Service
Distinctive Quality

Sambi
OF TOKYO
8649 Firestone Blvd.
771-4871 - 869-1171
DOWNEY, CAL.
Ample Free Parking

Bush Garden
SUKIYAKI
SEATTLE 614 Maynard St.
PORTLAND 121 SW 4th St.
SAN FRANCISCO 598 Bush St.

STOCKMEN'S
MOTOR HOTEL • CASINO
BAR • COFFEE SHOP
RESTAURANT
SWIMMING POOL
INDOOR PARKING
Fully Air Conditioned • TV

Empire Printing Co.
COMMERCIAL and SOCIAL PRINTING
English and Japanese
114 Weller St., Los Angeles 90012 MA 8-7060

Mrs. Friday's
DELIGHTFUL
seafood treats
DELICIOUS and
so easy to prepare
MRS. FRIDAY'S
Gourmet Breaded Shrimps
and Shrimp Puffs
FISHING PROCESSORS
1327 E. 15th St., Los Angeles (213) 746-1307

CAL-VITA PRODUCE CO., INC.
Bonded Commission Merchants—Fruits & Vegetables
774 S. Central Ave. L.A.—Wholesale Terminal Market
MA 2-8595, MA 7-7033, MA 3-4504

Eagle Produce
929-943 S. San Pedro St. MA 5-2101
Bonded Commission Merchants
— Wholesale Fruits and Vegetables —
Los Angeles 15

Tell Our Advertisers
You Saw It in the PC
KONO HAWAII
Tea Room
Featuring
TEPPAN YAKI
Luncheon:
11 a.m. - 2 p.m.
Dinner: 5 - 10 p.m.
Cocktails in
Kono Room
226 50
HARBOR BLVD
(South of Disneyland, near
First St., Santa Ana)
(714) 531-1232

Eigiku Cafe
Dine • Dance • Cocktails
SUKIYAKI • JAPANESE ROOMS
314 E. First St.
Los Angeles • MA 9-3028

The Finest in Japanese Cuisine
New Ginza
RESTAURANT
Luncheon • Dinner
Cocktails
TAKE-OUT LUNCHEONS
Group Parties
704 S. SPRING • Res. MA 5-2444

CATHAY DE GRANDE
A CHINESE RESTAURANT FOR THOSE
WHO WANT TO ENJOY THE REAL
CHINESE FOOD
JOIN US FOR
Chinese New Year • The Year of the Tiger
Ask for Our Special Dinner or Banquet
Good through the Month of January
Lunch • Dinner • Cocktails • Take Out Orders
We Are Open 7 Days

1600 No. Argyle Ave., Hollywood, Calif. 90028
Phone (213) 461-4077

The New Moon
Banquet Rooms available
for small or large groups

912 So. San Pedro St., Los Angeles MA 2-1091

Sambi
OF TOKYO
Exquisite Dining - Finest Japanese Food - Excellent Service
Distinctive Quality

Sambi
OF TOKYO
8649 Firestone Blvd.
7

CLASSIFIEDS

Announcement
ANYONE KNOWING the whereabouts of former or present Kikui Miyako, please write Kikui Miyako, former classmate of hers in Portland, Oregon, 1920-24 at 9626 - 87th Ave., S.W., Seattle, Wash. 98126.

Gift Idea!

Practical, authentic, easy-to-use cookbooks photographed by author Kay Shimizu, Nisei cooking authority.

ASIAN FLAVORS (97), Basic Nisei book of Japanese and Chinese recipes.

ASIAN COOKBOOK FOR THE B.E.G. (495). New, dynamic color photos and illus. Published by Japan's outstanding Shufunomoto Co.

Include 50 cents handling per book plus 5 pct. sales tax for residents. Send M.O. or check to:

Glenn Shimizu
19520 Scotland Dr.
Saratoga, Calif. 95070

Employment
BABYSITTER—MINIMUM 2 days per week. Drive own car. My house please. English. \$15 a day. (213) 555-2548.

YAMATO

EMPLOYMENT AGENCY

FREE
Secty, accing Dept 728
Bkpt, blngt, Arteria 820
Gen Ofc, lumber diet to 900
PHX-Typist, billing 820up
Cabinet Maker, exp. 820-6300
Mgmt Tr, biz grad 890-722
Manager, auto pte, Arteria 700
Houseman, Bev Hills r&b-1499

NEW OPENINGS DAILY
ALL EMPLOYMENT INQUIRIES
WELCOME—COME IN OR PHONE
Mon-Fri. 8:30 am to 5:30 pm.
Room 202, 312 E. First St.
624-2821

SAITO REALTY CO.
HOMES - INSURANCE

One of the Largest Selections
2421 W. Jefferson, L.A.
RE 1-2121
JOHN TY SAITO & ASSOCIATES

Christ Church of Chicago
WOMEN'S FELLOWSHIP
"Oryori" Cookbook
\$3.50—Postage extra, 50c
Make check payable to: W.F.
Christ Church of Chicago,
UCC, 701 W. Buckingham
Place, Chicago, Ill. 60637

Wesley WSCS Cookbook
13th PRINTING
Oriental and Favorite Recipes.
Donation \$2.50 Handling
50c. Wesley Union Methodist
Church, 688 N. 5th St.,
San Jose, Calif.

— 24 Hour Emergency —
"We Do Anything in Glass"
PESKIN & GERSON
GLASS CO.
Est. 1949 — Licensed Contractor

Store Fronts - Insurance Replacements
Sliding Glass Doors - Louvers - Mirrors
Glass Tops - Plate Window
& Auto Glass - Free Estimates
724 S. San Pedro St., L.A. 90014
(213) 622-8243

nation towards civil war. After the Civil War, Congress strove to settle the issues of the Dred Scott case by enacting a 13th Amendment, freeing the slaves, and a 14th, making them citizens.

In defiance of the wishes of Congress, Pres. Andrew Johnson gave aid to the defeated Confederates in their plan to keep the blacks disfranchised. Congress enacted a 15th Amendment giving the blacks the right to vote—already implied in the preceding Amendments.

The efforts of Congress were vain, even the U.S. Supreme Court was to lend itself to perverting the Constitution. Beginning with the Slaughterhouse cases of 1873, the Supreme Court twisted the meaning of the Constitution to the opposite of what the authors had intended, lending itself to a program of binding the blacks to a caste system, bereaving the whites of freedom of speech, encouraging employers to exploit employees and fostering the election of a Congress unrepresentative of the people.

Beginning with the dissents of Justice Louis D. Brandeis, the U.S. Supreme Court has turned back to the original meaning of the Constitution. The court headed by Chief Justice Earl Warren has repeatedly upheld the 14th Amendment. But the author fears this reform may have come too late.

News Deadline: Saturday

Ask for...
'Cherry Brand'
MUTUAL SUPPLY CO.
1090 Sansome St., S.F. 11

Double Knit
Fabrics for Sale
at Factory
to You
Wholesale Prices!

POLYESTERS
And Other Fabrics
Mon. 12 noon to 6 p.m.
Wed. 12 noon to 6 p.m.
Sat. 7 a.m. to 3 p.m.

Pacific Coast
Knitting Mills, Inc.
2724 Leona Blvd., Vernon
582-8341

Mikawaya
Sweet Shop
244 E. 1st St.
Los Angeles MA 8-4935

Commercial Refrigeration
Designing - Installation
Maintenance
Sam J. Umamoto
Certificate Member of RSES
Member of Japan Assn. of
Refrigeration.
Lic. # 208863 C-38
SAM REIBOW CO.
1506 W. Vernon Ave.
Los Angeles AX 5-5204

CHEVROLET
Fleet Price to All—Ask for
FRED MIYATA
Hansen Chevrolet
11351 W. Olympic Blvd. West L.A.
479-4411 Res. 825-9803

Los Angeles Japanese Casualty Insurance Assn.
— Complete Insurance Protection —

Aihara Ins. Agt., Aihara-Omatsu-Kakita-Fujioka 626-9625
250 E. 1st St. 263-1109
Anson Fujioka Agt., 321 E. 2nd, Suite 500...626-4393
Funakoshi Ins. Agt., Funakoshi-Kagawa-Manaka-Morey 462-7406
321 E. 2nd St. 287-8605
Hirohata Ins. Agt., 322 E. Second St. 864-5774
Inoue Ins. Agt., 15029 Sylvanwood Ave., Norwalk 684-5774
Joe S. Itano & Co., 318 1/2 E. 1st St. 624-0758
Tom T. Ito, 595 N. Lincoln, Pasadena 794-7189 (L.A.) 681-4411
Minoru 'Nix' Nagata, 1497 Rock Haven, Monterey Park, 268-4554
Steve Nakaji, 4566 Centinela Ave. 391-5931 837-9150
Sato Ins. Agt., 366 E. 1st St. 629-1425 261-6519

WEST LOS ANGELES JACL
1974 Summer Charter Flight

To Japan
VIA JAPAN AIR LINES (Fl JL 1061)

\$350.00 Per Person*
* Increase Due to Fuel Price Increase

Roundtrip Los Angeles-Tokyo
Leave June 20; Return July 16

Open to all JACL members and their immediate family. Approved and authorized by JACL National Travel Committee. Applications will be accepted on first-come, first-serve basis accompanied with \$100 payment, second payment of \$125 due March 1 and final payment of \$125 by April 1, 1974. Checks payable to West L.A. JACL Charter Flight.

Applicants may cancel before April 1 with full refund less \$25 administrative expense. No refunds for cancellations after May 1, unless substitution can be made. To confirm reservation, \$100 per person deposit should be mailed to: George Kanegai, Summer Tour Coordinator, 1857 Brockton Ave., Los Angeles 90025

Name(s):
Address:
City, State: ZIP:
Phone: Amt. Enclosed:
☐ We require tour arrangements in Japan. Please send info.
For additional flight information, tour arrangements or assistance, call: Roy Takeda (820-4309); Steve Yagi (397-7921); Autumn Tour Director; Toy Kanegai (820-1133); or George Kanegai (820-3592).

BOOK REVIEW: Allan Beekman How the Constitution Was Revitalized

THE AMENDMENT THAT REFUSED TO DIE, by Howard N. Meyer, Chilton, 252 pp., \$7.95.

According to the author, the 14th Amendment is the Amendment that refused to die. It is the Amendment that decrees, in brief, that all persons born or naturalized in the United States are citizens and that no State shall abridge their privileges or immunities, deny them equal protection of the laws nor deprive them of life, liberty or property without due process of the law.

When the founders of America prepared to write the Constitution of the new nation conceived in liberty, they found the proposition that all men are created equal unacceptable to some convention delegates from the slave states. To get the Constitution accepted, the idealists compromised.

In the first 10 Amendments they incorporated a Bill of Rights designed to protect the residents from such governmental abuses from which they had revolted. James Madison offered an Amendment to further insure these rights against infringement by the states; his Amendment was voted down.

Failure to clearly subordinate state to federal law ploughed the ground for injustice. The U.S. Supreme Court itself further fostered the cause of abuse by misinterpreting the Constitution as written.

In the Dred Scott decision, the U.S. Supreme Court rejected the proposition that all men are created equal. The case involved a black, Dred Scott, who had been taken by his master from Missouri, a slave state, to Illinois, a free state. He was later taken to Ft. Snelling in the northern part of the Louisiana Purchase, then returned to St. Louis, Missouri in 1838.

In 1846, with the help of antislavery lawyers, Scott sued for freedom for himself and for his family. Bringing suit in the Missouri state courts, he contended that his residence in a free state and

Accordingly, the court additionally ruled that residence in a free state did not make a slave a free man. They also decided that the Missouri Compromise of 1820 forbidding slavery in that part of the Louisiana Purchase lying north of 36 degrees 30 minutes latitude (except Missouri) had been an unconstitutional exercise of Congressional power.

This Supreme Court decision effected the opposite of putting the slavery question to rest; the decision inflamed public opinion and pushed the

CATALINA LONG BEACH CRUISE

Bring the Whole Family for a Day of Fun & Excitement.
Leaving Long Beach at 9 a.m. & 2 p.m.
Leaving Avalon at 11 a.m. & 4 p.m.

330 Golden Shore, Long Beach
(213) 435-6616, 775-2654 - (714) 826-2170

LINOLEUM DISCOUNT CITY

Complete Line of: Carpeting - Linoleum - Tile
"No Wax-Shiny Vinyl" - Remnants - Supplies
We Cut, Deliver, Install—No Charge for Yardage You Don't Need
Tremendous Savings to the Do-It-Yourself—Free Advice
1204 Redondo, Long Beach 591-411, 597-2652
BankAmericard - Master Charge

ALLIED PRINTING CO.

Printing While-U-Wait from Your Camera Ready Copy
BLUE PRINTING COMPLETE PRINTING SERVICE
• Lithography • Typesetting • Layout • Bindery
Mon. - Fri. 8 to 5 p.m.
8353 E. 2nd, Downey 869-5910

si
MEXICO
P. YOSHIKAWA
USA travel
LAWSON SAKAI ASSOCIATES
6115 Camino Verde Drive
San Jose, CA 95119 578-2630
SANTA TERESA, NEAR IBM

1974 JACL Summer Charter Flight TO JAPAN

via Pan American World Airways
\$350.00 Per Person*
* Increase due to fuel price increase and other factors

Roundtrip Portland to Tokyo
Leave JULY 28 and Return AUGUST 18

This charter flight is open to all members of the JACL and their immediate family members. It has been approved and authorized by the JACL National Travel Committee.

Of special interest to participants in the 1974 National JACL Convention, this flight is scheduled to leave Portland at the conclusion of the convention proceedings. To confirm reservations, a \$100 per person deposit should be made payable to JACL CHARTER FLIGHT and mailed to: James K. Iwasaki, 200 S.W. Fourth Ave., Portland, Ore. 97204. For flight reservations, information, or assistance in obtaining tour arrangements in Japan, please use the coupon below.

TO: James K. Iwasaki Summer JACL Charter Flight
200 S.W. Fourth Ave., Portland, Oregon 97204
Names and Relationship of persons accompanying JACL Member:
Address:
City/State/ZIP:
Telephone: Amount Enclosed:
Name:
☐ We will require tour arrangements while in Japan, please send information.

Aloha from Hawaii

by Richard Gima

for the "Aloha" Assn. Udall said he expects a bill for reparations of land should be ready to submit to Congress by the spring.

City Hall

Mayor Frank Fasi told a group of women Jan. 10 he believes Caucasians are discriminated against in state and city government jobs in Hawaii. Fasi said most of the women who apply for appointments to the city are haoles (Caucasians). Yet, he said, "haoles are very much under represented in government jobs." He said there are areas in both state and city governments where there are nothing but employees of one racial group, such as Japanese or Chinese.

Courtroom

The Honolulu Advertiser has asked for a court order requiring Mayor Frank Fasi to allow its reporters the same access to city hall news as any other newsmen. The suit stemmed from the mayor's barring of Advertiser reporter Douglas Carlson from a conference Fasi held with TV and radio newsmen on Jan. 8.

State Capitol

State Republican legislators again will oppose attempts to increase taxes, senate majority leader Wade Wadsworth announced Jan. 10. A tax-hike bill, which was designed to raise \$123 million, received much opposition from Republicans. Despite a filibuster by Yee, the measure passed the senate, but it did not pass the House.

This year's GOP program, Yee said, is basically the same as last year's.

Fuji Matsuda, Univ. of Hawaii vice-president, has been named chairman of the state's energy policy advisory task force, acting Gov. George Ariyoshi announced on Jan. 10. The task force will serve as an umbrella committee for all future energy considerations, Ariyoshi said. Other task force members are Louis Nickell, Shelley Mark, John Craven, James Gary, Alvey Wright, Albert Tom, John Shupe, Carl Williams, Ken Kim and Robert Rath.

John Simpson, president of the Hawaii Visitors Bureau, says Hawaii's tourist industry will continue to grow in 1974, despite the current energy crunch. Simpson made the statement recently after returning from a meeting in Washington with Federal officials. He said the fuel shortage will probably keep tourism growth below the 13 per cent increase experienced last year over the 1972 level. However, Simpson said he based his optimistic prediction on the announcement that four and charter businesses will receive 100 per cent of their fuel requirements this year. His meeting in Washington was with Federal officials and travel directors from various states.

Business Ticker

Castle & Cooks plans to build a \$7.6 million tuna cannery in American Samoa. The cannery is to have a capacity of 100 tons of fish daily and 350 employees to start. Construction is expected to begin this fall, Jan. 1976, is target date for starting operations.

The Bank of Tokyo opened its first office Jan. 10 in Honolulu with Kaku Sugita as chief representative. Sugita said his responsibilities will be to provide information and liaison services to persons and businesses in the islands. The office will not engage in actual banking, such as accepting deposits. Temporary quarters are in the Kendall Bldg.,

Hawaiians who are hoping to get monetary reparations from the U.S. government for lands taken in the last century have decided to establish a statewide federally chartered organization to seek the benefits of their campaign. The announcement came recently from Stewart Udall, the attorney

888 Milliani St., Honolulu.
The 64-acre Hilo Country Club and golf course will be sold to Obata-Pacific, Inc. for \$855,000. It has been announced. Obata-Pacific is a Hawaii corporation with Japanese and Mainland connections. The buyers plan to expand the nine-hole golf course to 18 holes and develop other recreational facilities at the site.

Names in the News

Former Honolulu lawyer Laurence Silberman, 36, who was Undersecretary of Labor for two years, has been selected deputy U.S. Attorney General by Atty. Gen. Saxbe. Fellow workers in the Hawaii State Library system voted Caroline Mastani of Aiea as its 1973 Mea Koku award for the "most deserving library staff member." She has been with the system since 1965. Big Island Councilwoman Josephine Yadao heads the Hawaii State Assn. of Counties as its 1974 president. Univ. of Hawaii history professor Edward Beecher is president of the Hawaii Federation of College Teachers. He headed the UH faculty senate's special committee on collective bargaining last year until resigning in protest against bargaining tactics. Susan Ali is president of the Honolulu chapter of the American Businesswomen's Assn., which was recently organized.

Appointments

Acting Gov. George Ariyoshi has announced the following seven interim appointments to state boards and commissions: Mrs. Juliana Jean, court district advisory council; Edward Wong, Jr. and John Kaupiko, Hawaiian Homes Commission; Janis Ishihara, Joann Kameyama and M.E. Bitterman, board of certification for practicing psychologists; Diane Anderson, Hawaii Education Council.

Education

Shiro Amloka, 51, state superintendent of education, resigned Jan. 21 and said he would return to the Univ. of Hawaii to teach in its education department. He had been superintendent for three years. Teichiro (Timmy) Hirata, 58, has withdrawn his resignation as deputy superintendent of the statewide public school system. He decided to stay "simply because a lot of individuals and groups urged me to reconsider."

Mrs. Yasuko Arakaki Matsunaga, Hawaii's 1974 Teacher of the Year, has been named one of the five finalists in the National Teacher of the Year competition. The Hilo Union School teacher is the first nominee from Hawaii to reach the finals since Hawaii has taken part in the program. Vivian Tom, a former Maui woman, is this year's New York State "teacher of the year." She graduated from the Univ. of Hawaii in 1961. She was born in Walluku and attended public schools on Maui. Mrs. Dorreen S. Richardson, a teacher at Keaukaha Elementary School on the Big Island, has been named outstanding young educator of that island by the Lehua Jaycees.

Leluehua High School with an enrollment of 3,068 students is the largest in the state. Enrollments of other schools follow: Farrington, 2,839; Radford, 2,719; Kailua, 2,708; Castle, 2,632; McKinley, 2,472; Pearl City, 2,300; Hilo, 2,186; Kaimuki, 2,047; Wai-pahu, 2,021.

Deaths
Philip Rice, 87, the last chief justice of the Territorial Supreme Court, died Jan. 14 at Arcadia Retirement Home, 1434 Punahou St.

GIBRALTAR IRON WORKS

Gates - Railing - Columns.
We install peace of mind.
Security windows and doors.
Fire Escape windows
867 E. Walton 437-7733
(Signal Hill) Long Beach

MANPOWER INC.

We'll Give You All the Help You Need.
Office - Industrial - Data Processing. Technical - Sales - Medical
Complete Temporary Services

484 W. Willow 427-5411
Long Beach, Calif.

FRANCOIS' MANHATTAN

For the Finest Continental Cuisine, Cocktails

1909 E. 4th 436-0620
Long Beach, Calif.

JACKSON PRINTING CO.

Printers - Lithographers
Complete Printing Service - Low Rates
"Try Jackson for Satisfaction"

1045 Pine Ave. 432-7994
Long Beach, Calif.

DAISY PALACE BEAUTY PARLOR

Specializing in Latest Hair Cuts, Shags - Blower Cuts
Complete Beauty Service

129 Main Seal Beach, Calif. 430-1667

COMPTON ROCK SHOP

For All Your Needs
1405 S. Long Beach Blvd. 632-9096
Compton, Calif.

SHINGLES WHOLESALE

All Types of Roofing Materials. Discount Prices
Rooftop Delivery
615 N. Alameda 537-4201
Compton, Calif.

BELMONT SHORE MOBILE ESTATES

Adults Only - Selected Pets
6261 E. Pacific Coast Hwy. 431-4132
Long Beach, Calif.

SOUTHLAND TERMITE CONTROL

21 Years Experience
Free Estimates, Reports for Escrows and Refinancing.
Termites - Beetles - Fungus - Dry Rot
6577 Orange Ave. 423-5523
Long Beach, Calif.



PHILADELPHIA — JACLER Howard Okamoto, a Univ. of Utah graduate in electrical engineering, joined Aydin Controls as vice-president for government sales and market development. The firm produces random scan full graphics and color-TV limited graphic systems for command and control systems. He is married to the former Kuniko Ikemori of Maui and they have three children.

Use of pet foods is relatively new in Japan. The first commercially prepared dog food appeared 13 years ago. The industry estimated 1972 sales at \$35 million and expects annual sales by 1975 to be twice that.

Fem State Troopers

Maryland State Police is not only seeking black troopers so as to achieve a goal of 16% black force within five years but also actively recruiting women.

Better do a good deed near at home than go far away to burn incense.—Chinese proverb.

Univ. of Hawaii

Tuition increases that will double the current charges on all except one campus by Sept. 1975, have been adopted by the Univ. of Hawaii board of regents. Graduate tuition will almost triple on the Manoa campus, and law and medical school tuition will be more than three times the present figure. Under the new schedule, that will drop to \$60 next year and go up again to \$80 in the fall of 1975. That is the same amount that also will be charged students in all the community colleges. The community college students now pay \$40 a year. Manoa campus under graduates, now charged \$195, will pay \$322 next fall and \$450 in Sept. 1975. Graduate students, who now pay \$195 a year, will be hardest hit. Graduate tuition except for students in the law and medical schools will go to \$372 next fall and \$550 in 1975.

Deaths
Philip Rice, 87, the last chief justice of the Territorial Supreme Court, died Jan. 14 at Arcadia Retirement Home, 1434 Punahou St.

Gates - Railing - Columns.
We install peace of mind.
Security windows and doors.
Fire Escape windows
867 E. Walton 437-7733
(Signal Hill) Long Beach

GIBRALTAR IRON WORKS

Gates - Railing - Columns.
We install peace of mind.
Security windows and doors.
Fire Escape windows
867 E. Walton 437-7733
(Signal Hill) Long Beach

MANPOWER INC.

We'll Give You All the Help You Need.
Office - Industrial - Data Processing. Technical - Sales - Medical
Complete Temporary Services

484 W. Willow 427-5411
Long Beach, Calif.

FRANCOIS' MANHATTAN

For the Finest Continental Cuisine, Cocktails

1909 E. 4th 436-0620
Long Beach, Calif.

JACKSON PRINTING CO.

Printers - Lithographers
Complete Printing Service - Low Rates
"Try Jackson for Satisfaction"

1045 Pine Ave. 432-7994
Long Beach, Calif.

DAISY PALACE BEAUTY PARLOR

Specializing in Latest Hair Cuts, Shags - Blower Cuts
Complete Beauty Service

129 Main Seal Beach, Calif. 430-1667

COMPTON ROCK SHOP

For All Your Needs
1405 S. Long Beach Blvd. 632-9096
Compton, Calif.

SHINGLES WHOLESALE

All Types of Roofing Materials. Discount Prices
Rooftop Delivery
615 N. Alameda 537-4201
Compton, Calif.

BELMONT SHORE MOBILE ESTATES

Adults Only - Selected Pets
6261 E. Pacific Coast Hwy. 431-4132
Long Beach, Calif.

SOUTHLAND TERMITE CONTROL

21 Years Experience
Free Estimates, Reports for Escrows and Refinancing.
Termites - Beetles - Fungus - Dry Rot
6577 Orange Ave. 423-5523
Long Beach, Calif.



Hawaii Today

A gasoline-rationing plan similar to the one being used in Oregon will go into effect in Hawaii Feb. 4, acting Gov. George Ariyoshi announced. The plan allows drivers with even-numbered license plates to buy fuel for their vehicles on even-numbered days. Odd-numbered plates would be eligible on odd-numbered days. Stations would be open Monday through Friday and drivers would be allowed to fill up only if their tanks are at least half empty. Ariyoshi said 92% of the state's service stations had agreed to comply with the volunteer plan.

Hawaii again is headed for an end-of-the-month gasoline shortage because motorists are hoarding the gasoline in the bottom half of their tanks, industry officials reported Jan. 13. "Dealers will be running out of gas faster than last month (Dec.)," said Richard Botti, exec. sec. of the Hawaii Automotive and Retail Gasoline Dealers. "Many have been selling three days' worth of gas in one day. It will catch up with them. Unless allocations are increased, this will be a very tough month."

A set of procedures has been mailed out to members of the Gasoline Dealers Assn. to alleviate long station lines and allow all drivers easier access to gasoline. The organization is asking stations to limit gasoline purchases to \$5, to fill only cars with tanks below half-empty, and to pump gasoline both during morning and evening periods. Botti's organization represents about 70 per cent of Oahu's dealers and 85 per cent of those on the neighbor islands.

John Simpson, president of the Hawaii Visitors Bureau, says Hawaii's tourist industry will continue to grow in 1974, despite the current energy crunch. Simpson made the statement recently after returning from a meeting in Washington with Federal officials. He said the fuel shortage will probably keep tourism growth below the 13 per cent increase experienced last year over the 1972 level. However, Simpson said he based his optimistic prediction on the announcement that four and charter businesses will

ECHOES: Joe Oyama

Still America's Heartland

I once read somewhere that if you were ill and lying down in the street, the chances that you would be helped would be the best in the Midwest, and the least on the East Coast or the West coast, in that order. I believe this to be true. In New York if you nodded or smiled to a stranger, or if a Black child looked up to you, smiled, and said, "Hello," this would be highly unusual. When I first came here, I didn't know how to react to a stranger who lived in the Midwest. I smiled at me and said, "Hello." Now, after living here for eight months, I find myself waving to strangers. But there are two sides to this picture, and we have to accept the contradictions to get the whole picture.

I work in an all-white residential area as one of the managers in a very busy 24-hour market operation. This market, part of a chain, is located in a separate township distinct from the city of Cincinnati, but surrounded by large residential areas of middle-class and working Blacks to the West and South. The people here who live in large white elephant houses with very spacious lawns and an abundance of trees are mostly from the states of Kentucky and Tennessee. They are hard-working sincere people with a great deal of pride (like Samurai, will never back down in a fight) and with their latent prejudices. Fearing the encroachment of the Blacks, many pack handguns.

In contrast to where I work, we live in an integrated area called Mt. Auburn. I do not know whether it is predominantly Black or not, but Cincinnati has a higher percentage of Blacks than New York City.

Generally, I find whites living here more relaxed, and I, myself, feel more at ease here than in the area where I work, where it is segregated. I felt a bit uncomfortable on my first day to work, when I drove by the elementary school with its tall white flagpole, and saw nothing but white faces with not one Black or Oriental child among them. I also felt a sharp contradiction when I saw the beautiful modern (in very good taste) Black-owned Jehovah Witnesses' church next door to where I work. The Blacks have opened their church to the whites and integrated meetings are held, but they are not permitted to live in this residential section.

I am not saying that Cincinnati is that different from New York City, but racial lines are less sharp, actually, than the white bastions of Park Ave. and Fifth Ave., and even the Morningside Heights area on the Westside. The dollar sign is all but emblazoned in neon on top of swank Park Ave. apartments. In New York, when a famed Columbia University professor was killed in a robbery on his way home from work, an intellectual and writer of Polish descent whom I had known for years said,

"These Niggers — what do they want anyway?"

When news of the young lady in Boston who was set upon and burned to death by Blacks came out, the intellectual of our store, a former Univ. of Cincinnati student, said, "These . . . Niggers. We ought to ship them all back to Africa." He is a young man interested in becoming a disc jockey, rides in an Opel with a young lady's garter hanging from the mirror, and spends a great deal of time reading books.

In New York, I knew a man from West Orange, N.J., well versed in Japanese literature, poetry and art, and a great admirer of Zen Buddhism. In his home, he had his own private retreat (since he has five teenagers stomping around the house), the floor covered with tatami, where he would practice meditation before his tokonoma. He would also take solitary walks into the woods and is very knowledgeable about flora and fauna.

His knowledge of Japanese literature, philosophy and religion would have put most Nisei (so busy trying to make money) to shame. He is also an oil painter and a sculptor, and is of Swedish descent. He once sought his identity (because of the ethnic upsurge), went to a smorgasbord, and that was it. He had had it, and went back to his first love, the "Japanese things" — sushi, sushi, calligraphy, etc.

One day he said, "In New York, when I was driving I saw a couple of 'Jigaboos' breaking glass in a telephone booth. They were little boys. Actually, so senseless. They're animals! They're animals! That's what they are!" He felt threatened because of the westward expansion of the Blacks from Newark into West Orange, where he lives, and said, "I'm afraid we'll be engulfed someday!" He admitted, however, to having a Negro friend who is a sculptor, but in the same breath he laughed about the "Jigaboos" whom he had business dealings with, and who tried to do him in.

His wife, a painter and former school teacher in an elite elementary school in New York City shared his racial prejudices.

In New York City, one can attend a party in a high-rise apartment, and guests from New Jersey will fail to appear because of their fear of coming into a high crime area, and Jerseyites and Rockland County, N.Y., people will boast about not going into the city, and "wonder how you can stand to live in the city."

Actually, I have found more fear of the Blacks outside of New York City in the suburbs than in New York City. Many of these people who moved to the suburbs (most Nisei included), many of them established "liberal" types, had moved away in the first place to get away from the Blacks and Puerto Ricans to "be," as they say, "among the birds and bees and flowers."

They are true nature lovers who love only a certain category of people, and the people have to be white. But now, since the ethnic upsurge, and since it won't do for their children to marry whites, the children are chauffeured by Nisei parents into New York City to the meetings of Asian-Americans, etc.

Hizi Koiike, the former opera star of "Madame Butterfly" fame, once spoke to us, a group of Nisei, at the Japanese Methodist Church in New York City, and she said, speaking of her wartime experience, "I trust the rough and tumble Brooklyn driver type who will slap you on the back (she imitated a truck driver by swinging her arm) more than the intellectual or polite academic type. I trust him more, because when a crisis arises, it's the intellectual who will call you, 'a dirty Jap!'"

On the whole, I feel, Midwesterners speak more from the heart than from the intellect. My friend said, "Intellectuals are f—up people!"

Mail-order system taking hold in Japan

TOKYO — Seibu Dept. Store and its subsidiaries introduced Sear's mail order system last July, followed by Matsuzakaya in September, by trying in with Quella International, biggest mail order store in Europe.

Majority of the shoppers are young housewives who either visit the catalog counter or purchase a catalog (in Nihongo) to place their orders. Items are shipped by mail from the U.S. or Europe.

Seibu reported the number of daily customers patronizing the counter has increased.

10,000-Yen Note

Purchasing power of the Japanese ¥10,000 note, first issued in 1958, now buys ¥4,215 worth of items in Tokyo.



BERKELEY—Eleven Eagle Scouts were awarded their ranks at the Berkeley Troop-Post 26 court of honor. They are (from left): kneeling—William Kagawa, Wayne Takata, Sherman Takata, Perry Sato; standing—Carl Kurahara, Martin Chinn, Robert Hirasawa, Lee Nakamura, Larry Tong, Richard Young and Irving Yamashita. Berkeley JACLer Roy Kurahara is scoutmaster of the troop, which currently has 56 lads registered.—Photo by George Kagawa

NEWS CAPSULES

Elections

Eleven aspirants, including Gardena Valley JACLer Mas Fukai, are bidding for three seats in the Mar. 5 Gardena city council elections. Over 300 jammed his campaign headquarters at 1058 Gardena Blvd. (532-1390) despite the heavy rain for the open house Jan. 20, including Supervisor Kenneth Hahn, chairman of the L.A. county board of supervisors, who reappointed Fukai to his fifth term as Drugs and Narcotics Commission member, State Assemblyman Paul Bannai and L.A. District Attorney Joseph Busch. Fukai's campaign manager is David Lee, assisted by No Nijima and Chedda Yue, finance co-chairmen.

The Re-elect Ken Nakakoa for Mayor Committee in Gardena opened its campaign headquarters at 15225 S. Western with George Kobayashi, campaign manager, in charge. Frank Yonemura, general director Ken Nakakoa's first bid for the mayor's seat when it first came on the ballot in 1972.

Committee to Re-elect Mayor or Norm Mineta opened their campaign headquarters Jan. 18 at 416 N. 1st St., San Jose. Assemblywoman March Fong, 51, of Oakland announced her candidacy Jan. 10 for the Democratic nomination for secretary of state. Elected to the state legislature in 1966, she became prominent with two crusades — against pay toilets in public buildings and for better venereal disease legislation. Another prospect for the same spot is Herman Sillas, Los Angeles attorney and Mexican American community leader, who is chairman of the California Advisory Committee to the U.S. Civil Rights Commission.

Assemblywoman March Fong, 51, of Oakland announced her candidacy Jan. 10 for the Democratic nomination for secretary of state. Elected to the state legislature in 1966, she became prominent with two crusades — against pay toilets in public buildings and for better venereal disease legislation. Another prospect for the same spot is Herman Sillas, Los Angeles attorney and Mexican American community leader, who is chairman of the California Advisory Committee to the U.S. Civil Rights Commission.

Assemblywoman March Fong, 51, of Oakland announced her candidacy Jan. 10 for the Democratic nomination for secretary of state. Elected to the state legislature in 1966, she became prominent with two crusades — against pay toilets in public buildings and for better venereal disease legislation. Another prospect for the same spot is Herman Sillas, Los Angeles attorney and Mexican American community leader, who is chairman of the California Advisory Committee to the U.S. Civil Rights Commission.

Assemblywoman March Fong, 51, of Oakland announced her candidacy Jan. 10 for the Democratic nomination for secretary of state. Elected to the state legislature in 1966, she became prominent with two crusades — against pay toilets in public buildings and for better venereal disease legislation. Another prospect for the same spot is Herman Sillas, Los Angeles attorney and Mexican American community leader, who is chairman of the California Advisory Committee to the U.S. Civil Rights Commission.

Mrs. Richard Thomas, 32, of Arvado, Colo., was appointed community relations director for the suburban Denver community of Lakewood (pop. 92,000). Among 30 applicants, the former Carol Kinoshita, who hails from Hilo, Hawaii, holds three university degrees, including a doctorate in communications studies from the Univ. of Colorado. Her husband is an electronics engineer at Utility Control Corp. (She is believed to be the third Japanese American to head a municipal human relations department on the Mainland. Phil Hayasaka of Seattle was the first, Minoru Yasui of Denver following.)

Japan Prime Minister Kakuei Tanaka's daughter, Mrs. Makiko Tanaka, who accompanied him on his hectic 11-day Southeast Asian tour, spent three years at the Germantown Friends School in Philadelphia and was graduated from the high school there in 1963. She was married in 1969, but her husband Naoki took her family name to preserve the Tanaka family line. They have a son, Yui-chiro, who is 3.

Bakery executive George Izumi was nominated by Los Angeles Mayor Tom Bradley to a vacancy on the Harbor Commission, which for many years has had Asian representation.

Dr. James Chin, chief of the Calif. Dept. of Health infectious diseases section, identified a new bird/72 form of Hong Kong flu/72 in the virus laboratory at Berkeley. The germ was discovered in

Health

A project to assure sophisticated biomedical electronics equipment in hospitals are operating safely and reliably is being coordinated in Hawaii by James Yano, executive committee chairman of the Continuing Health Education Council and administrative assistant at St. Francis Hospital, Honolulu. Oahu's 17 hospitals will be serviced by the project, which has received a federal grant of \$10,000 and bidding for \$300,000 from private sources to demonstrate the plan as a pilot project for a three-year period.

Milwaukee-born Dr. Alan Kiyomoto, 28, was named Young Optometrist of the Year by his colleagues of the Alameda-Contra Costa Counties Optometric Society. Optometrists in practice less than eight years are eligible for this award. The UC-Berkeley graduate, who practices in Newark, was cited for his professional contributions to the community center on comprehensive health services.

Dr. James Chin, chief of the Calif. Dept. of Health infectious diseases section, identified a new bird/72 form of Hong Kong flu/72 in the virus laboratory at Berkeley. The germ was discovered in

a South San Francisco family and is now being studied by the U.S. Center for Disease Control in Atlanta.

Churches

JACL Century Clubber Tom Yanagihara was installed president of the San Diego Adult Buddhist Assn. at a potluck dinner at their home.

San Francisco's Christ United Presbyterian Church, situated at Post and Octavia for the last 50 years and serving the Nikkei community, held its final service Jan. 20 and moved out to make way for the new senior citizen apartment. It will continue to meet at the prewar Japanese YWCA at 1830 Sutter St. until its new church is completed at Sutter and Laguna.

Motomi Yokomizo, chairman of the trustees for the Institute of Buddhist Studies at Berkeley, hailed the \$8.12 donation from the Wisteria Class of the Palo Alto Buddhist Dharma School as "one of the most important and generous donations received to date." The donation was accompanied by a letter which the sixth-grade children wrote: "We hope your school can use the money to train future sensei." Yokomizo noted it was from such youngsters that future clergy must come and most promising they have taken an interest in the Institute at so early an age.

Press Row

Sacramento Bee urban affairs writer Charles L. Mori-waki received a \$4,200 Washington Journalism Fellowship to cover a five month reporting experience in public affairs in Washington, D.C. He was one of 10 reporters from around the country to earn the fellowship, which ends June 13. He will attend seminars with top government officials and pursue special reporting projects. The son of the Yoshiaki Mori-wakis of San Francisco, he graduated summa cum laude from UC Davis in 1969 and was an apprentice reporter in the KQED newsroom before joining the Bee.

Active Monterey Peninsula JACLer Ted Durein, executive editor of the Peninsula Herald, received a plaque from Bing Crosby for his more than 25 years of work as a volunteer press director for the Big Crosby Pro-Am Golf Tournament recently. Durein was Herald sports editor in 1946 when he wrote to Bing and his older brother Larry suggesting the tournament be moved to Monterey peninsula. Hawaii Times editor Seiwei Wakugawa was a Honolulu Japanese-language school teacher at the time Pearl Harbor was bombed, arrested by the FBI and detained on Sand Island first and then shipped to Lordsburg, N.M., and after being released, taught Japanese.

Best Wishes to the Japanese American Community

Best Wishes to All Our Japanese American Friends and Customers

CLYDE'S TV

1640 W. Redondo Beach Blvd. Gardena, Calif. 327-1941

Best Wishes to the Entire Japanese American Community

Compliments of a FRIEND

Season's Greetings

M & Y Service Station

2701 E. First St. Los Angeles, Calif. 262-9461

CHRISTMAS BILLS!

Pay your Holiday bills with a low interest consolidation loan from your Credit Union

National JACL Credit Union

Mail: P. O. Box 1721, Salt Lake City, Utah 84110

Office: 242 S. 4th East, Salt Lake City

Tel.: (801) 355-8040

Remember you can borrow \$3,000 on your signature with a qualified credit rating.

DURING JANUARY 1000 Club Membership

• Fifty Club • Century Club • Corporate

National Headquarters acknowledged 110 new and renewing memberships during the first half of January as follows:

- FIFTY CLUB (First Year)
- Manaki, Dr. H.W. (Sac)
 - Seto, Joseph (WLA)
- ALAMEDA
- 8-Fujimori, Hajime
 - 3-Momono, William B
 - 3-Yoshimine, Mike
 - 2-Yoshitani, Don
- BERKELEY
- 2-Nakano, Masuichi
 - 7-Tsushima, Dr. Eiichi
 - 2-Yoshitani, Don
- BOISE VALLEY
- 7-Oyama, James N
- CHICAGO
- 1-Barie, Mrs. Tamiko
 - 1-Eisenhower, Yaeko
 - 14-Inouye, Mrs. Masako
 - 2-Ito, Takeo
 - 14-Kitazaki, John
 - 15-Noma, Toshio
 - 18-Onori, Dr. Harry
 - 7-Takahashi, Frank
 - 3-Toba, Mitsuru
 - 15-Yamaguchi, Jiro
- CINCINNATI
- 3-Grill, Harry M
 - 1-Kelly, Sonja
 - 1-Kelly, Rosalyn L
 - 1-Kozumi, Gail
- CLEVELAND
- 16-Fujita, Robert E
 - 8-Leer, Shig
- DAYTON
- 4-Sadatsaki, Mrs. Mary
- 13-Sameshima, Col. Ko S
 - 3-Sugimoto, Mrs. Sus
- DETROIT
- 21-Togasaki, Minoru
- DOWNTOWN L.A.
- 5-Hitomi, Tetsu
 - 13-Ito, James I
 - 6-Kosaka, Fred
 - 12-Lo Presti, Joseph
 - 16-Shirakawa, Mrs. Saku
 - 22-Takeda, Shigeki
- FRENCH CAMP
- 5-Egl, Tatsuo
 - 9-Ota, Bob S
- GRESHAM-TROUTDALE
- 24-Kato, Mrs. Chiyu
 - 24-Kato, Henry T
- HOLLYWOOD
- 5-Kina, Sam S
 - 3-Kondo, Hideo
 - 3-Kurumi, Mrs. Kiyu
 - 4-Graham, Charles A
 - 2-Dinges, Tom R
 - 2-Katsuka, Tokio
 - 3-Santer, Dr. Thomas G
 - 11-Teramura, Kengo
- MILWAUKEE
- 2-Kondo, Hideo
 - 3-Kurumi, Mrs. Kiyu
 - 4-Graham, Charles A
 - 2-Dinges, Tom R
 - 2-Katsuka, Tokio
 - 3-Santer, Dr. Thomas G
 - 11-Teramura, Kengo
- MONTEREY PENINSULA
- 5-Hattori, Dr. Takashi
 - 5-Manaka, Rinzi
 - 12-Sugimoto, Akio L

- NEW YORK
- 8-Okasaki, Frank
 - 10-Takashima, Katsumi J
- OAKLAND
- 1-Kawakami, Kenneth J
 - 5-Rowe, John H
 - 9-Tsuiji, Thomas
- OMAHA
- 6-Allen, Mrs. Mikki
 - 5-Egusa, Mrs. Eileen
 - 12-Egusa, James T
- ORANGE COUNTY
- 14-Nishida, Clarence I
- PASADENA
- 19-Ito, Mrs. Mary K
 - 2-Ogawa, Dr. Kiyoshi
 - 5-Sato, Sumio
 - 2-Stelding, E. Price
- PORTLAND
- 20-Kuge, Dr. Toshiaki
- PROG. WESTSIDE
- 19-Nagamoto, Dr. Kenneth K
- PUEBLO
- 2-Ella, Mrs. Edna
 - 2-Ella, Paul
 - 10-Sami, James
 - 16-Moriyasu, Dr. Victor
 - 15-Murakami, George
 - 2-Murphy, Vincent M
 - 15-Sasaki, Tad
- RENO
- 3-Nakagawa, Sammy S
- 4-Choy, Dr. Eugene
- RIVERSIDE
- 3-Ogata, Gen
- SACRAMENTO
- 4-Iwama, Frank A
 - 6-Masaki, Dr. H S
 - 4-Yamada, Henry Y
 - 4-Yamada, Yoshito
 - 4-Yamamoto, Scott S
- SALINAS
- 7-Hibino, Henry K
 - 8-Sakagawa, Roy
 - 7-Yamamoto, Robert A
- SAN DIEGO
- 25-Owashi, Joseph
 - 10-Takashima, Katsumi J
- SAN FERNANDO VLY
- 4-Moriguchi, Robert
 - 6-Otsuki, Harry T
- SAN FRANCISCO
- 12-Mayeda, Jack M
 - 2-Shiota, Phillip
- SAN GABRIEL
- 2-Liguori, Paul
 - 2-Oyama, Dr. Abe
 - 4-Sato, Sumio
 - 2-Stelding, E. Price
- SEATTLE
- 9-Fukuda, James K
 - 11-Nakagawa, Y. Phillip
 - 2-Nakagawa, Ben
 - 2-Sudo, Mamoru
 - 14-Ueno, Dr. Ben T
- SEQUOIA
- 7-Onomoto, Ronald A
 - 5-Izumi, George Y
 - 5-Izumi, James S
- SONOMA
- 2-Bryan, Howard
 - 12-Oonuma, Dr. Roy
- STOCKTON
- 8-Terashita, Dr. Kengo
 - 7-Yamaguchi, Dr. M. Lincoln
- TWIN CITIES
- 18-Rokutani, George
 - VENICE-CULVER
 - 5-Sugihara, Jack
 - WEST LO SANGELES
 - 6-Seto, Dr. Joseph
 - WEST VALLEY
 - 7-Sumida, John
 - 6-Uchiyama, Dr. Raymond
 - WILSON
 - 21-Yata, Tatsuo

nese at the Univ. of Chicago, Columbia University and at the Harvard Civil Administration Training School. His brief story appeared in wake of the "Executive Order 9068" photographs on display in recent weeks at the East-West Center. The Honolulu Advertiser (Jan. 8) felt the "most hopeful way to regard this exhibition is a measure of how much things have changed . . . that those involved (calling for Evacuation) were not fanatics, for along with the racists were some of the nation's biggest and best names — Earl Warren, Tom Clark, William O. Douglas and President Roosevelt, who signed Executive Order 9068."

Theater

San Francisco Japan Center's Kabuki Theater has been renamed S.F. Dinner Theater with Broadway producer Donald Cox planning to schedule a series of favorite American musicals. Cole Porter's "Kiss Me Kate" starring John Raitt will be the premiere production opening April 19. The \$6-million theater was first opened in 1968 to house productions from Japan but has been dark most of the time after its initial revue folded.

Education

World authority on creative dance, Masami Kuni of Studio City, is holding a seminar at Glendale (Calif.) High School, Feb. 23-24. Call 766-0301 for enrollment details.

Beaths

Saburo Miyamoto, 66, longtime Chicago JACLer and proprietor of Franklin Food Store on E. 53rd St. died Jan. 11. The Hawaiian-born businessman is survived by wife Mitome and a son.

Travel

Japan Air Lines has ordered six long-range DC-10-40 trijets for delivery in early 1976. Two will seat 277-passengers on its international service while the other two with 327 seats will replace DC-8s on its domestic service.

Business

Nisei-owned and operated Auto-Ready, Inc., headed by Tad Ikemoto, has merged by Trans-Auto Rental Systems, Inc., which means an expanded rental fleet at eight rental locations in Downey (head office), Fullerton, Buena Park, Costa Mesa, Newport Beach, Long Beach, Pasadena as well

as Little Tokyo. The rental division of Auto-Ready will operate under Trans-Auto with Ikemoto serving as exec. v.p. of Trans-Auto in addition to his duties as president of Auto-Ready.

Radio-TV

NBC-TV special, "Trial by Wilderness" (shown in L.A. Jan. 17, 8 p.m.), narrated by former astronaut Neil Armstrong featuring three American and two English students journeying through Zululand to learn first-hand about the dangers of living in the wilds, included one Nisei UCLA co-ed, Elizabeth Hiasahi, 21, of San Pedro. The city-oriented young adults were also taught the need to protect the natural environment. Armstrong currently teaches at the Univ. of Cincinnati.

Education

World authority on creative dance, Masami Kuni of Studio City, is holding a seminar at Glendale (Calif.) High School, Feb. 23-24. Call 766-0301 for enrollment details.

Beaths

Saburo Miyamoto, 66, longtime Chicago JACLer and proprietor of Franklin Food Store on E. 53rd St. died Jan. 11. The Hawaiian-born businessman is survived by wife Mitome and a son.

Travel

Japan Air Lines has ordered six long-range DC-10-40 trijets for delivery in early 1976. Two will seat 277-passengers on its international service while the other two with 327 seats will replace DC-8s on its domestic service.

Business

Nisei-owned and operated Auto-Ready, Inc., headed by Tad Ikemoto, has merged by Trans-Auto Rental Systems, Inc., which means an expanded rental fleet at eight rental locations in Downey (head office), Fullerton, Buena Park, Costa Mesa, Newport Beach, Long Beach, Pasadena as well

Shimatsu, Ogata and Kubota Mortuary

911 Venice Blvd. Los Angeles RI 9-1449

SEIJI DUKE OGATA R. YUTAKA KUBOTA

Three Generations of Experience

FUKUI Mortuary, Inc.

707 E. Temple St. Los Angeles 90012 626-0441

Soichi Fukui, President James Nakagawa, Manager Nobuo Osumi, Counselor

Best Wishes to the Japanese American Community

Ballers Hardware & Lumber

2505 N. Hyperion Ave. Los Angeles, Calif. 665-4149

Best Wishes to All Our Japanese American Friends and Customers

CLYDE'S TV

1640 W. Redondo Beach Blvd. Gardena, Calif. 327-1941

Best Wishes to the Entire Japanese American Community

Compliments of a FRIEND

Season's Greetings

M & Y Service Station

2701 E. First St. Los Angeles, Calif. 262-9461

FTC appoints Hyun admin. law judge

WASHINGTON — The Federal Trade Commission appointed Montgomery K. Hyun on Jan. 8 as an administrative law judge for the agency. The commission delegates the initial performance of its adjudicative fact-finding functions to administrative law judges, it was explained by FTC chairman Lewis A. Engman.

Hyun, 51, joined the FTC staff in 1961 as a trial attorney and prosecuted merger cases and other proceedings involving trade restraints for 10 years. In 1971 he moved to the FTC Office of the General Counsel, handling FTC cases before the U.S. appellate court. In 1973 he was appointed attorney adviser to the FTC chairman.

Born in Korea, he was graduated from Swarthmore in 1949 and received a master's degree from Columbia in 1952 and his law degree from Georgetown in 1956. He is married to the former Ariel C. Hollingshead; they have two sons, William 14 and Christopher 11.

Japanese taller now

The average 14-year-old boy in Japan today is 5 feet 3 1/2 inches tall, half an inch taller than the average 18-year-old boy in 1900. The average 12-year-old girl today is taller than the average 18-year-old female in 1900.

Order PC for Your Schools or Libraries

Three Generations of Experience

FUKUI Mortuary, Inc.

707 E. Temple St. Los Angeles 90012 626-0441

Soichi Fukui, President James Nakagawa, Manager Nobuo Osumi, Counselor

Best Wishes to the Japanese American Community

Ballers Hardware & Lumber

2505 N. Hyperion Ave. Los Angeles, Calif. 665-4149

Best Wishes to All Our Japanese American Friends and Customers

CLYDE'S TV

1640 W. Redondo Beach Blvd. Gardena, Calif. 327-1941

Best Wishes to the Entire Japanese American Community

Compliments of a FRIEND

Season's Greetings

M & Y Service Station

2701 E. First St. Los Angeles, Calif. 262-9461

Business and Professional Guide

Your Business Card placed in each issue for 25 weeks at 3 lines (minimum) 125 Each additional line \$6 per line

Greater Los Angeles

FLOWER VIEW GARDENS FLORIST 1601 W. Western Ave. (213) 466-7373 Art fls. welcomes your floral gift orders for the Greater L.A. Area Mention P.C.

JACL Group Health Ins. Jimmy Gozawa • (213) 765-9715 7359 Cleon Ave. Sun Valley 91352

HISEI FLORIST In the Heart of L.A. 328 E. 1st St. MA 8-5606 Fred Moriguchi Memb. Telephone

YAMATO TRAVEL BUREAU 312 E. 1st St. L.A. (90012) MA 4-6021

Watsonville, Calif.

TOM NAKASE REALTY Acacia Ranches • Homes Tom T. Nakase, Realtor 25 Clifford Ave. (408) 724-6477

Pacific Grove, Calif.

SUNSET MOTEL Nr ocean, golf, conference grnd 133 Asilomar Bl. (408) 375-3936

San Jose, Calif.

EDWARD T. MORIOKA, Realtor Service Through Experience Bus: 246-6606 Res: 241-9954

Sacramento, Calif.

Wakano-Ura Sukiyaki • Open 7 days Open 11-11 Closed Monday 2217 10th St. • GI 8-2331

Seattle, Wash.

Imperial Lanes 2101 — 22nd Ave. So. EA 5-2523 Nisei Owned — Fred Takagi, Mgr

Kinomoto Travel Service Frank Y. Kinomoto 521 Main St. MA 2-1522

Washington, D.C.