



—(Photo by ROY UNO)
 (Above) FOO SPEED AHEAD—Under the watchful eye of Quix prexy Dick Fujioka, another foursome prepares for an exciting ride on the toboggan. The picture was taken at the recent snow party held by the Windsors and Quixotics at Lake Arrowhead.

(Right) HIGH COMMAND—In their crisp white uniforms are Lt. Colonel Michi Shibata (left) and Captain Mary Tateoka (right) of the Roosevelt High School Girl's Drill and Rifle Team. These two high ranking Niseis are part of the unique all-girl marching unit which will participate in a parade on March 4. Story on page two.

—(Photo by ROY UNO)

Southland Bussei in Conference

Two-Day Meet Features Open Forum and Queen Contest Besides Business

Attracting about 350 delegates from Young Buddhist Associations in Arizona, San Diego, Guadalupe, Gardena, West Los Angeles, Senshin and Los Angeles, the Southern District YBL conference will open for a two-day meet tomorrow.

Activities will be centered at the Senshin Buddhist Church, 1336 W. 36th Pl., with the theme of the conference expressed in "Enlightenment through Buddhism."

Host chapters are the Senshin and Gardena YBA. Registration will begin at 1 p. m. tomorrow. Presided by Mas Honda, president of the Southern District YBL, the delegates will meet from 4 to 6 p. m. Most of the afternoon will be spent in bowling.

Saturday's activities will end with a basketball game at 8 p. m.

Sunday Program

Sunday's program will begin with registration at 9 a. m. Tom Hide, Gardena, is in charge of the opening service at 10 a. m., which will have the Rev. Shinjo Nagatomi as speaker.

Conference pictures will be taken by Jack Iwata from 11:30 a. m. to noon. Box lunches prepared by the Senshin girls will be served at noon.

The Rev. Kenryo M. Kumata will speak on the theme of the conference at 1 p. m.

Albert Hirota of Los Angeles will chair the open forum to be held from 2 to 3 p. m.

Installation of officers will be held during the general meeting at 3:30 p. m., after a free period. Chairman of the closing service will be Fred Takata of Senshin YBA.

Climax

Tets Bessho and his orchestra will play at the Sayonara Ball at the Senshin Hall, when the coronation of Southern District's queen,

who will represent the district at the WYBL conference in Fresno, April 30 and May 1, will be held.

Nisei Missionary To Make Last Two Addresses

The Rev. Seiji Horiuchi, Nisei Missionary to Japan under the Far Eastern Gospel Crusade, will deliver his last two addresses here on Sunday.

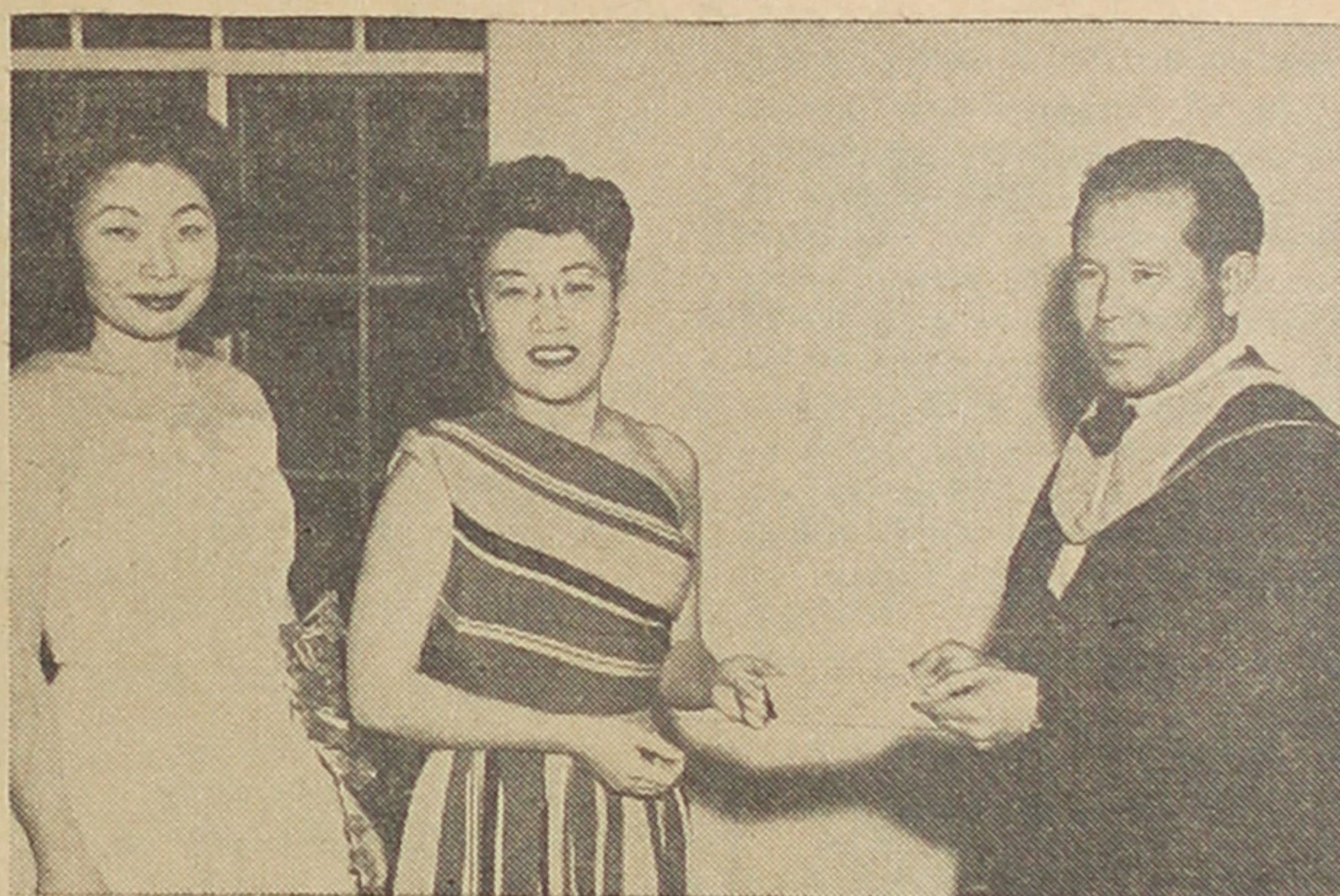
To the congregation of the Nisei Community Church, the ex-GI youth will speak on the Nisei's responsibility toward the needs of Japan on February 27 at 11 a. m.

The Rev. Mr. Horiuchi will speak to the Evergreen Baptist Church on Sunday night at 7:30 p. m. He is scheduled to sail for Japan from Seattle in March.

Photographer Shigeta Guests at Chicago CL

CHICAGO — Harry K. Shigeta, internationally-known photographer and lecturer, spoke at a general meeting of the Chicago JACL at the Woodrow Wilson Room of the Lakeview Building on February 23.

An old time resident of Chicago, Shigeta is well known in the photography world, having won several international as well as national salon prizes.



—(CROSSFOTO)

MUSIC AWARD WINNERS—(From l. to r.) Marlene Fujita, third prize winner, and Ayako Matsumoto, second prize winner, are congratulated by Yaemitsu Sugimachi, AJBS director. Sadako Mitamura, first prize winner, was unable to attend.

Sadako Mitamura Places First in Music Contest

Sadako Mitamura, contralto, who sang "Che faro senza Euridice" by Gluck and "La Girometta" by Sibella, won the first prize music scholarship awarded by the American Japanese Broadcasting Society last Saturday night at the Koyasan Betsuin.

A graduate of the Baldwin Wallace Music Conservatory, Miss Mitamura's voice was praised by the four music authorities who judged the contest as showing the most "maturity."

Second place award went to Ayako Matsumoto, graduate of Westminster Choir College in Princeton, N. J. The soprano sang Mozart's "Dove Sono" and "Depuis La Jour" by Charpentier.

Mezzo soprano, Marlene Fujita, copped the third award singing

"Were My Song with Wings Provided" by Hahn and "My Heart at They Sweet Voice" from Saint-Saens' "Samson and Delilah."

The music scholarship awards, presented between the acts of "Madame Butterfly" Sunday night by Yaemitsu Sugimachi, AJBS director, were \$300, \$150 and \$100 respectively.

Honorable Mention

The judges also awarded honorable mention to Yoshiye Yamane, Futaba Band Vocalist, and Aileen Miyeko Inouye, violinist, for "showing great promise."

For their outstanding performance in the playlet, "The Love Cure," Kyoko Kamo and Hirohisa Okubo were each presented with an acting scholarship award of

Metropolitan CL Installation Dinner Set For Mar. 2

Installation of officers of the re-organized metropolitan chapter of the JACL will take place at a dinner meeting, March 2, at Kow Nan Low, according to Eiji Tanabe, president of the group.

The blanket cabinet of the business and professional men's association include Hana Uno, Mrs. Robert Minato, Henry Tsurutani, Taro Kawa, Dr. Hideo Uba, Dr. George Kambara, Kiyomi Takata and Harry Honda.

The dinner, slated to begin at 7:30 p. m., will feature a speaker from the City Planning Commission.

Dr. Tom Watanabe will swear in the new cabinet.

Justice Department Expected to Act on Evacuation Fund Soon

WASHINGTON — Mike Masaoka, JACL-ADC national legislative director, said last week he was confident the Department of Justice is planning to ask Congress for funds to begin paying evacuation claims during the next fiscal year beginning July 1.

Masaoka, in discussing funds to satisfy claims being filed under the Evacuation Claims Act, pointed out that unless funds are voted by the present Congress for the fiscal year of 1949-50, the Department of Justice will pay no claims until the following fiscal year—1950-51.

\$100.

Both the Music Scholarship Contest and "Madame Butterfly," featuring Kanuma Fujima and Fumiko Kawabata, played to SRO audiences on the two nights they were presented.

'Perfect Japanese Interpretation' Brought to 'Butterfly'; 'Love Cure' is Promising Beginning

With one or two notable exceptions, the performances in the Music Scholarship Contest, the playlet, "Love Cure," and "Madame Butterfly" presented last weekend were quite amateurish.

Critics are supposed to go easy on benefit shows (which "Love Cure" and "Butterfly" were) and amateur performances (which the contest was), and never let it be said that we didn't recognize the long weeks of toil on the part of performers and backstage workers alike to make the three undertakings possible.

However, \$1.50 is \$1.50.

To begin with, we doubt whether the scholarship contestants were assembled for even one rehearsal from the Koyasan stage. The majority showed nervous strain, although we admit it must have taken a great deal of will power to face an erratic lighting system, squalling babies and the pitter-patter of latecomers' feet.

The spotlight seems to have had a hard time locating the performers. Most of the time, it seemed up to the latter to find the former.

We may also add here that in a few numbers, the accompanist literally and figuratively "stole the spotlight," which was a great injustice to the contestants.

Too much cannot be said about babies, which seem always to plague Japanese gatherings of this sort. An appreciation of music which must be satisfied, baby sitter or no baby sitter, is an admirable quality, but we believe it only common sense public etiquette to leave the infants at home when attending a gathering of Saturday night's nature — and "infants" in this case includes those up to 12 years of age.

Latecomers are a perennial exasperation to performers and audience alike. Is it asking too much of them to at least wait until the numbers to look for seats?

As for the judging, it is a useless gesture to talk of what might have been. With the judges' first and second choices, we have no quarrel. Miss Fujita had a good quality of voice, but her interpretation, particularly of the Saint-Saens song, seemed to lack feeling and understanding.

Yukio Ogawa also gave evidence of a voice with some promise, but it lacked power and push.

"Love Cure" was an experiment in adapting a Japanese play into English dialogue. As an experiment, we thought it went off rather well, especially in Kyoko Kamo's conception of the garrulous beautician and in Hirotsuka Okubo's interpretation of the comic servant.

Translation of Japanese writing, particularly Japanese colloquialism, into English is a ticklish project, and we hope that in future undertakings of this sort, more care will be taken in the selection of a play which will avoid stock stage characters.

The success of Sunday night's "Madame Butterfly" is all due to Kansuma Fujima, who took the title role. Kansuma brought a perfect Japanese interpretation of "Butterfly" to the stage which so far surpassed the supporting players in depth of understanding and technique of expression that it is useless to think of this "Butterfly" without her.

It is electrifying even to speculate on what might have been, had there been a more masculine and three-dimensional Pinkerton or Sharples.

Midori Yoshida, however, as the maid, showed Kansuma's training



—(Photo by ROY UNO)

"BUTTERFLY"—A scene from the Japanese adaptation of Puccini's "Madame Butterfly" presented by the Radio Drama Study Workshop last Sunday shows from l. to r., Mary Haruta as Cho-Cho san's mother, Midori Yoshida as the maid Osuzu, Kansuma Fujima as Butterfly, Hideo Ikuno as the American consul and Fumiko Kawabata as Pinkerton.

Roosevelt Girls Drill Team Boasts Two Nisei Leaders

When the Crime Prevention drill daily during the first period, Week parade marches down Broadway on the eve of March 4, two smartly uniformed Nisei girls will be leading a battalion and a company respectively of the Roosevelt High School Girls' Drill and Rifle Team.

Holding the highest rank in the group is Michi Shibata, a senior who has the rank of lieutenant colonel. Mary Tateoka, senior captain, is commander of Company A. Both girls have been with the team for two and a half years. The battalion, which includes from 80 to 90 girls, is composed of two companies or two platoons each. Two other Nisei girls belong to it besides the Misses Shibata and Tateoka.

Under the direction of E. Mitchell, the girls perform at football games, assemblies and in conjunction with R.O.T.C. activities. They and gave a creditable performance.

All in all, disappointing though the performances were on Saturday and Sunday — for we expected greater things — we nevertheless came away with some feeling of elation. There is a glimmer of promise in the sincere effort which everyone connected with the performances evidenced, and we hope that this will be only the beginning of more cultural undertakings of the same sort in the future.

—k.h.

H. H. Kodani Agcy.

203 Taul Building
312 EAST FIRST STREET
Los Angeles 12, Calif.

Encyclopaedia Britannica

The oldest, the most honored, the most widely read Encyclopaedia in the English Language.

Fred Yabuki

Only Japanese Agent in Southern Calif.
2825 3rd Ave. Phone: REpublic 2-1023 Los Angeles 16

TOYO PRINTING CO.

325 E. First St., L. A. 12
MA. 6-1711

Meet your "Aikanes" at

LEILANI CAFE

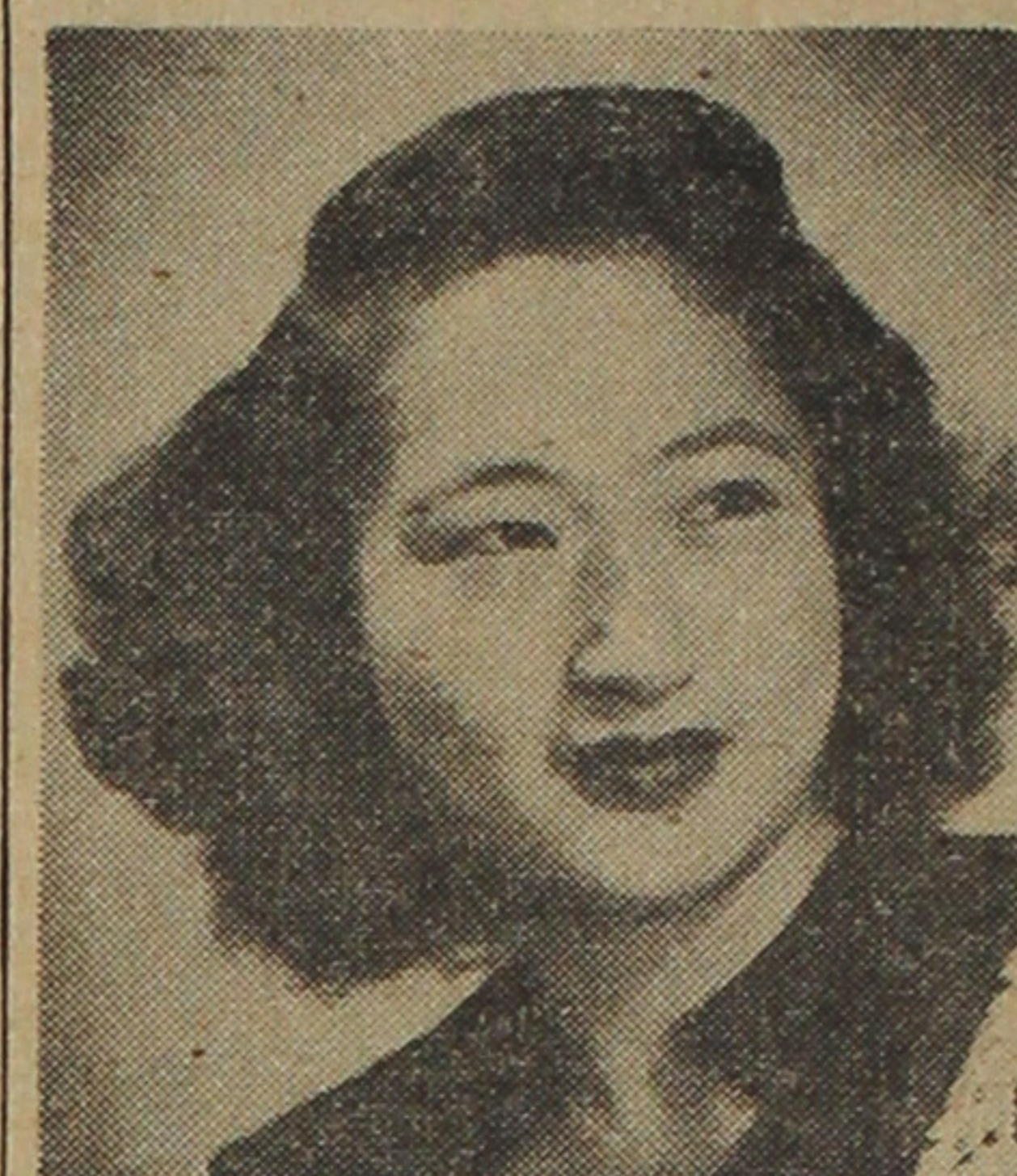
Breakfast Lunch Dinner

105½ Weller St. — MA. 9-8055

American dishes — Beer 7 A. M. to 2 A. M.

Yuki Toya will Represent W. L. A. In Queen Contest

Yuki Toya, active West Los Angeles YBA member, has been named the West L. A. Buddhist Church's candidate for queen at the forthcoming Southern District Young Buddhist League Conference this Saturday and Sunday.



The 23-year-old miss is a diminutive 5 feet 1 and weighs 110. Poised and efficient, she is an instructor in music and belongs to the Windsors girls club.

In addition to Grace Tokuyama, who will represent the Nishi Hongwanji YBA in the contest, Susie Shinohara, 18-year-old Metropolitan Business College student, will represent San Diego, Miss Shinohara is 5 feet 2 inches tall and weighs 105.

DAVID Y. NITAKE

Life-Fire-Auto

2939 11th Ave. RE. 3-5966

Meet Your Old Friends
At The

Waikiki Cafe

BEER

343 E. First St.
Family Style Cooking

Income Tax

Evacuation Claims

FREE CONSULTATION

MUTUAL SERVICENTER

BUSINESS CONSULTANTS

G. Y. Katow Bean Takeda

322 E. First Street

MUTual 3746

ATTENTION PIANO BUYERS!
DON'T WASTE YOUR TIME IN LOOKING
AROUND FOR A PIANO . . . JUST CALL
RE. 21023

FRED YABUKI
PIANO BROKER

2825 3rd Avenue

Los Angeles 16

• Only Japanese Agent for Encyclopaedia Britannica in So. Calif.

FRANKLIN LIFE INSURANCE COMPANY OF ILLINOIS

207 Vimcar Bldg. Madison 6-3393 **Mizokami Agency** 124 S. San Pedro St.
Los Angeles, Calif.

MASAO R. MIZOKAMI — General Agent
CHOYEI KONDO — District Manager
YOSHIO KIYOHRO — Agency Supervisor

ASSOCIATES:

Fred T. Hirano
Fred Ikeguchi
Kazuo K. Inouye
Angel K. Itomura
Carl T. Kondo
Larry Y. Kaya
Frank Y. Koyanagi
Bessie Mitobe
Arthur T. Kumada
James M. Nakawatase

Harry Miyake
Marcus R. Muraki
Paul Nakamura
Hitoshige Okabe
Bob T. Okuno
Walter N. Tatsuno
Imaharu Yoshimura
George H. Wada
Tom Yoshioka
Frank K. Nishiyama

RE. 2-8323
PHOTOGRAPHS
Richard Ito Studio
You will
Always Cherish
3407 7th Ave. L.A. 16

Don-Kay Malt Shop

Clean-Efficient-Courteous
SERVICE

Snacks-Light Lunches

357 E. First St. MU. 0460

TU. 4742 RES.: RI. 7-0757
OPEN FROM 12 TO 1 A.M.

Nikko Low
REAL CHINESE DISHES.
SERVED IN FAMILY STYLE
339½ EAST FIRST STREET
LOS ANGELES 12, CALIF.

Quality Work In . . .

• **Painting**
• **Paper-Hanging**

Harold Nakashima

461 N. Indiana AN. 3-3012

HONEST — RELIABLE
COURTEOUS SERVICE

Louise Realty Co.

1961 E. 2nd St. AN. 2-8415
Los Angeles 33 AN. 3-6500

Luis K. Aihara

— GENERAL INSURANCE —

114 S. San Pedro MI. 8001

TOM T. ITO INSURANCE

LIFE AUTO FIRE

Michigan 8001 SYcamore 70725

F. H. HIROHATA

Complete Insurance Service
Life-Fire-Auto

126 No. San Pedro St.
MUTual 8494

FUNAKOSHI Insurance Agency

'Complete Insurance Protection'
966 SO. SAN PEDRO ST.
Tucker 8359 - ARizona 9-6894

SAITO REALTY CO. HOMES INSURANCE

One of the widest selections of unrestricted homes, and business opportunities in Los Angeles—no obligation to show you.

Eastside Office:

2438 E. First St. AN. 9-2117

Westside Office:

2421 W. Jefferson RE. 3-3385

JOHN TY SAITO
John Y. Nishimura
Susumu Yasuda
Tek Takasugi

"Real Japanese Food"

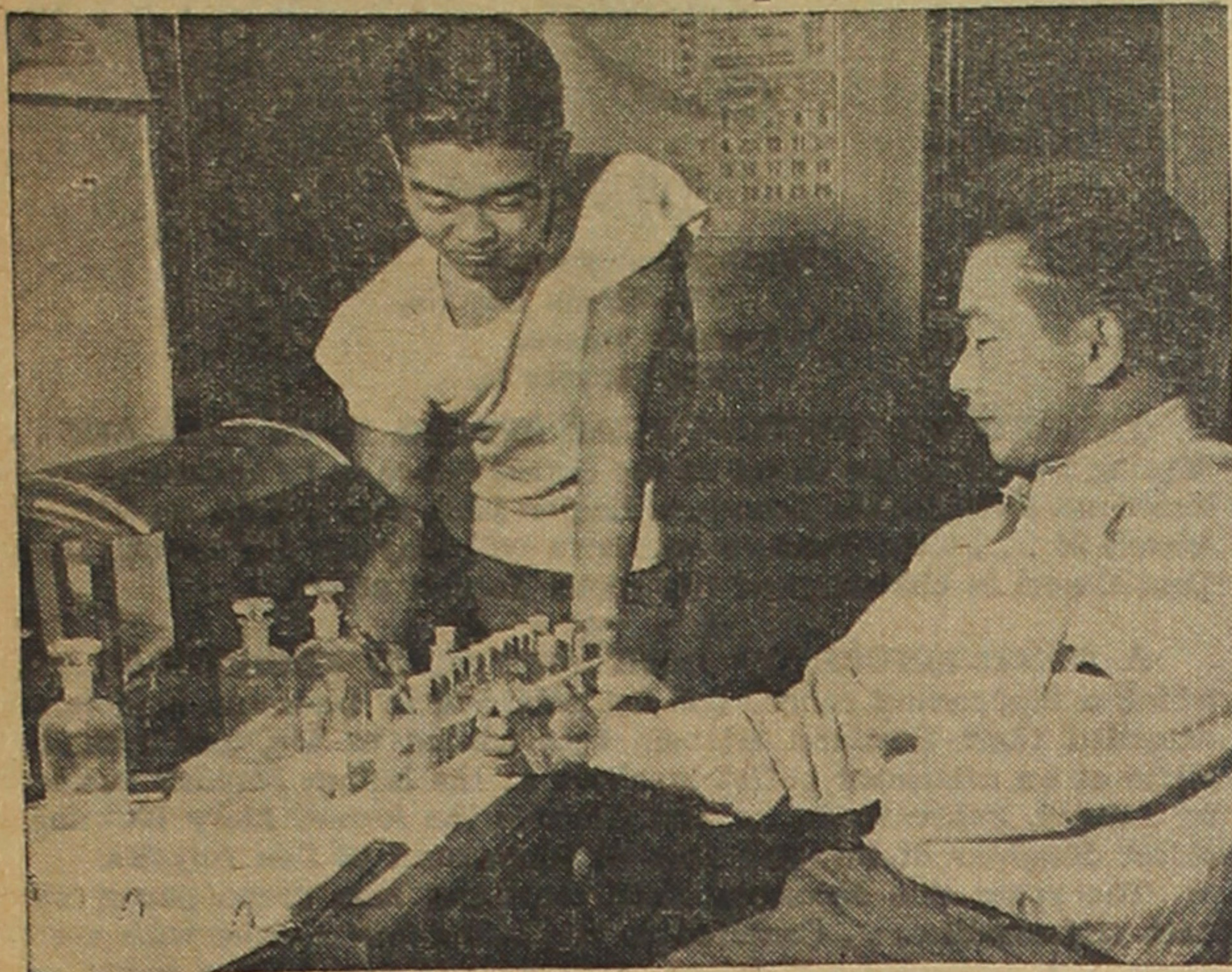
AT

PALMS CAFE

328½ EAST FIRST ST.

VAndyke 3237

Gakusei Kai in Heavy Need Of Funds for Improvements



—(Photo by ROY UNO)

"PSYCHIC BENEFITS"—Tom Nagata (right), a pre-med student at USC, and Harry Araki (left), a pharmacy student at LACC, take time off from homework duties to talk over ways and means they can "fix up the house," meaning Gakusei Kai where they room and board.

"Fix up the house!"

This has been the battle cry, so to speak, of the residents of 727 W. 30th St., a structure that is familiarly known as "Gak House," since September, 1947.

Established about 30 years ago, Gakusei Kai was leased to tenants other than Nisei men students during the war years. When the Nisei regained possession of it in 1947, the house had fallen into a state of neglect and disrepair, and was quite barren of furniture.

Then following a period when the 16 or 17 men who inhabit the house slept on the floor, washed without hot water and even used the covering on the porch lights as a water pitcher, in their determination to "fix up the house."

Today, 17 students are living in a house which provides a roof and four walls, beds, dishes (unmatched set), and a furnished living room. The porch light covering has been restored to its proper place of dignity, but the house and its facilities still fall woefully short of the standard for comfortable and proper living quarters.

Salvaged Time

The lot of a college student is usually an impecunious one—funds are low and costs are high. Spare time is also at a minimum, but what spare money or time the men manage to scrape up are put into "fixing up the house."

Psychic Benefit

Not only does "Gak House" furnish a practical and convenient place of residence for men students, but it also provides a psychic benefit of social and academic companionship.

From this house has emerged learned scholars, professional and business men who are all good and constructive citizens today. They owe much to the understanding and generosity of the Japanese community which originally donated funds to set up the house.

Cabinet

Management of the house's affairs are in the hands of the cabinet which this year includes Elmer Yoshino, president; Tom Na-

gata, vice-president; and Harry Araki, treasurer-secretary. Mas Kinoshita headed the outgoing cabinet.

Supervisor and advisor to the group is Atty. Elmer Yamamoto, USC graduate and member of the board of trustees of "Gak House."

Among the present inhabitants of the house are:

From USC—Mas Kinoshita, Harry Araki, Frank Shibata, Neil Chiamori, George Nakashima, Tom Tamaru, Maynard Matsunaga and Elmer Yoshino.

From LACC—Sho Nojima, Art Tasaka, Tom Nagata.

From the L. A. College of Optometry, George Ariyasu and Akira Tajiri, and Mas Higa from West Coast University.

Dance

To supplement funds for further much-needed improvements, the boys will sponsor a dance on April 9 at the USC Union Lounge. Donations will be much appreciated, President Elmer Yoshino said.

Former Hilltoppers to Attend Annual Jig

More than 1000 former Belmont High School "Hilltoppers" are expected to attend the annual Alumni Association dance at the Los Angeles Breakfast Club, 3201 Los Feliz Blvd., on the evening of Friday, February 25.

The dance, which will feature Darrel Brewer and his orchestra, is to climax the traditional afternoon tea and baby show, held from 1:30 to 3 p. m., on the Belmont campus, according to Jack Dixon, Alumni president.

SUBSCRIBE TODAY!

ENTERPRISE SALES CO.

MADISON 9-3351 MADISON 9-3352
COMPLETE LINE OF HOUSEHOLD FURNISHINGS,
DIAMOND RINGS AND WATCHES.
BROADWAY ARCADE BLDG. 542 So. Broadway
ROOM 404 Los Angeles, Calif.

Kow Nan Low

Chop Suey and Oriental Dishes

105 North San Pedro Street

MADISON 1951

Week Days: 12 noon to 12 a.m. - Sat. & Sun. 11 a.m. to 1 a.m.



CHEW'S CAFE
Real Chinese Food

320 E. First St. - MU 8708

VETERAN'S

★ MAIL CALL

Veterans compensation, bonuses, privileges and etc. Information such as these are available at NVA Headquarters. When seeking information call MU-1552 or write to: Mail Call, c/o CROSSROADS, 312 E. 1st St., L. A. 12, Cal.)

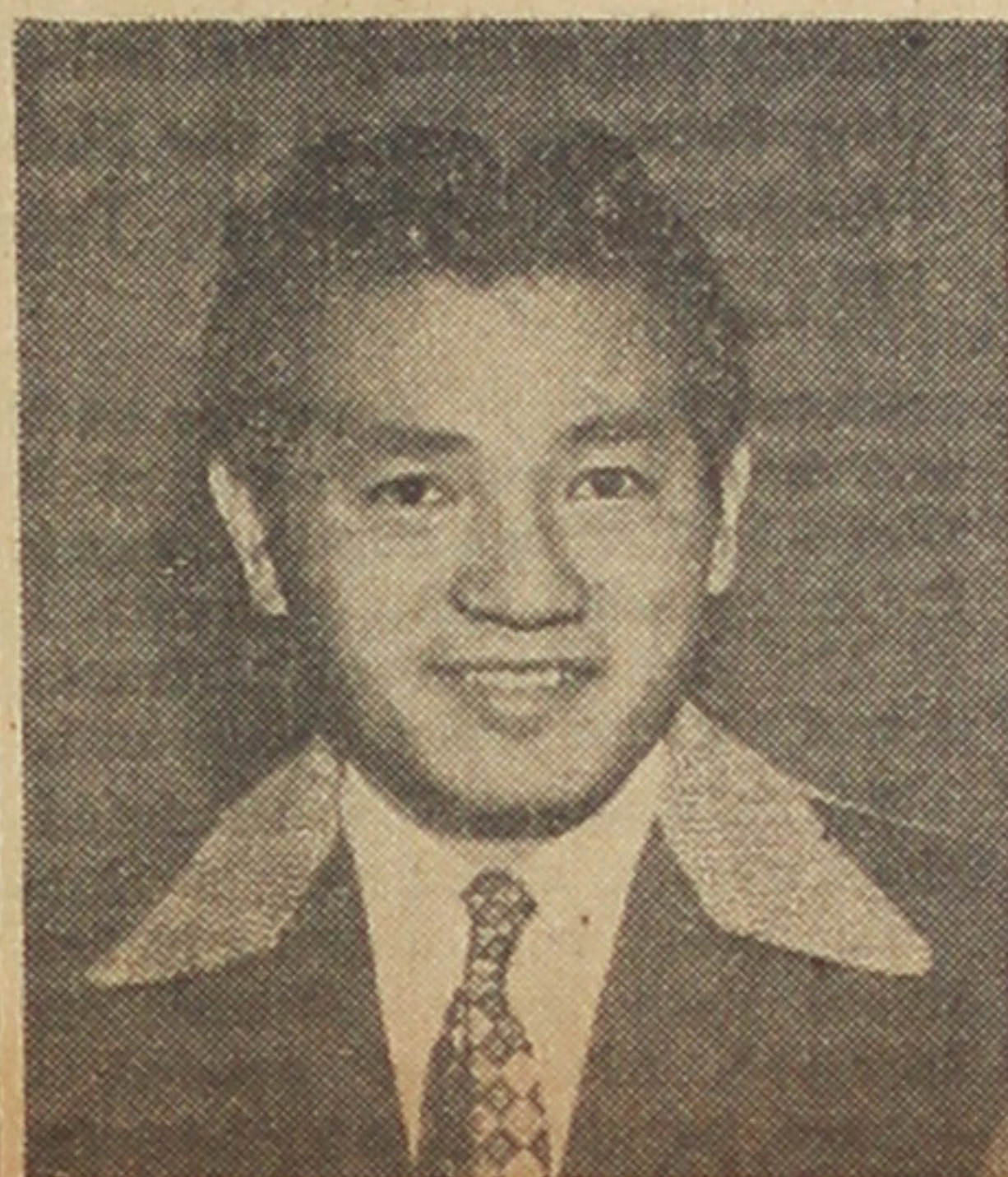
VISITOR . . .

Visiting in town were Dr. and Mrs. Isamu Tashiro of Chicago. Passing through Los Angeles enroute to their home, Dr. and Mrs. Tashiro were the guests of the Mayor of Honolulu on their recent trip to Hawaii. Both are active in veterans organization work in Windy City.

PROFILE . . .

NVA's recording secretary is Joe Yamagawa. Resourceful in ambition and conscientious in attitude, Yamagawa is one man that has participated in every function of the NVA. At every War Dead funeral and at all the general meetings, Yamagawa is present to pitch in and do his share of work.

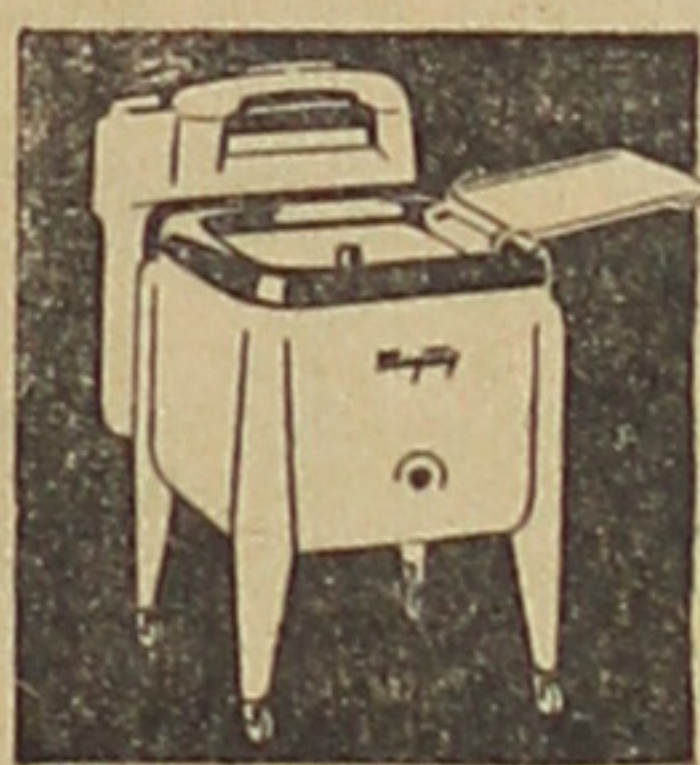
At present he is attending Los



JOE YAMAGAWA

Angeles City College, majoring in engineering. He is an alumnus of Roosevelt High School. Active in extra-curricular activities, Yamagawa was president of the Student Nisei Club of LACC.

A member of the Associated Mens Student at CC, he is one of the few Nisei ever to be admitted to that society.



It's easy to own a Maytag

Easy terms—liberal trade-in. Come in today.

NISEI TRADING CO.

235 E. FIRST ST. MU. 1275

EASTER BANQUET . . .

NVA's Easter Banquet committee headed by Paul Bannai has selected Earl Carroll's in Hollywood for the Third Anniversary Banquet. Announcement was made at a committee meeting held last Tuesday.

World-famed for its star-studded entertainment, Earl Carroll's Restaurant will be open Easter night especially for our Anniversary Banquet. The gala affair is open to the public. Publicity posters, bids and reservations will start sometime next week.

So save that date! April 17. It will be an affair you'll never forget.

VETS INFORMATION . . .

The latest manual on the privileges, rights and benefits of a veteran distributed by the Government Printing Office, Wash., D.C. is available at NVA Headquarters.

SUBSCRIBE



Window - Trucks - Show Cards
BOB HONDA
129 So. San Pedro St.
MU. 2504

DARUMA CAFE

"The only place for 'tasty' Japanese food."

BEER - WINE
SAKE

123 S. SAN PEDRO STREET
Madison 6-2748

When In Lil Tokyo

Visit

The New Dept. Store

PACIFIC MAIL ORDER CO.

314 E. First St.

Los Angeles

TELEPHONE MA. 6-5890

MODERN CARPENTRY

ALTERATIONS - CONSTRUCTION - REPAIRS - DESIGNING
FOR HOMES AND STORES

131 Weller St. L.A. 12 MU. 1234

ED. J. KURUSHIMA - Res. AN. 3-8469

Fukui Mortuary

"Since 1918"

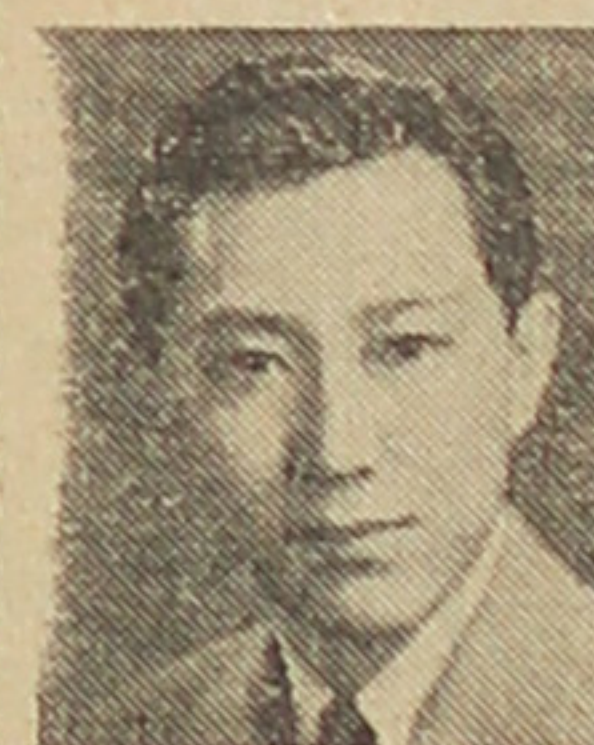
707 Turner St.

Los Angeles 12, California

MA. 6-5825

AMERICAN NATIONAL INSURANCE COMPANY

Babies insured at birth. Educational Policy, Retirement Income & Annuities, Business & Partnership Ins. Estate Analysis. Personal aid for ex-G.I.s with their insurance.



George I. Yamate MA. 6-4121
Res.: AN. 2-3831



Suite 501, 816 W. 5th St.
1835 E. Second St.

QUALITY SERVICE SAVINGS

Selected high Quality merchandise offered with courteous, efficient Service at the best Savings possible has been the policy of over 10,000 Rexall Druggists for 46 years.

Join us in our celebration of our past years... our looking forward to the future.



FUJI

300 E. First St.

MU. 6720

Rexall

DRUG STORE

SAN - SEI - DO JEWELRY COMPANY

104 So. San Pedro St.
Los Angeles 12
Guaranteed Watch Repairing
MADISON 6-2866

EP

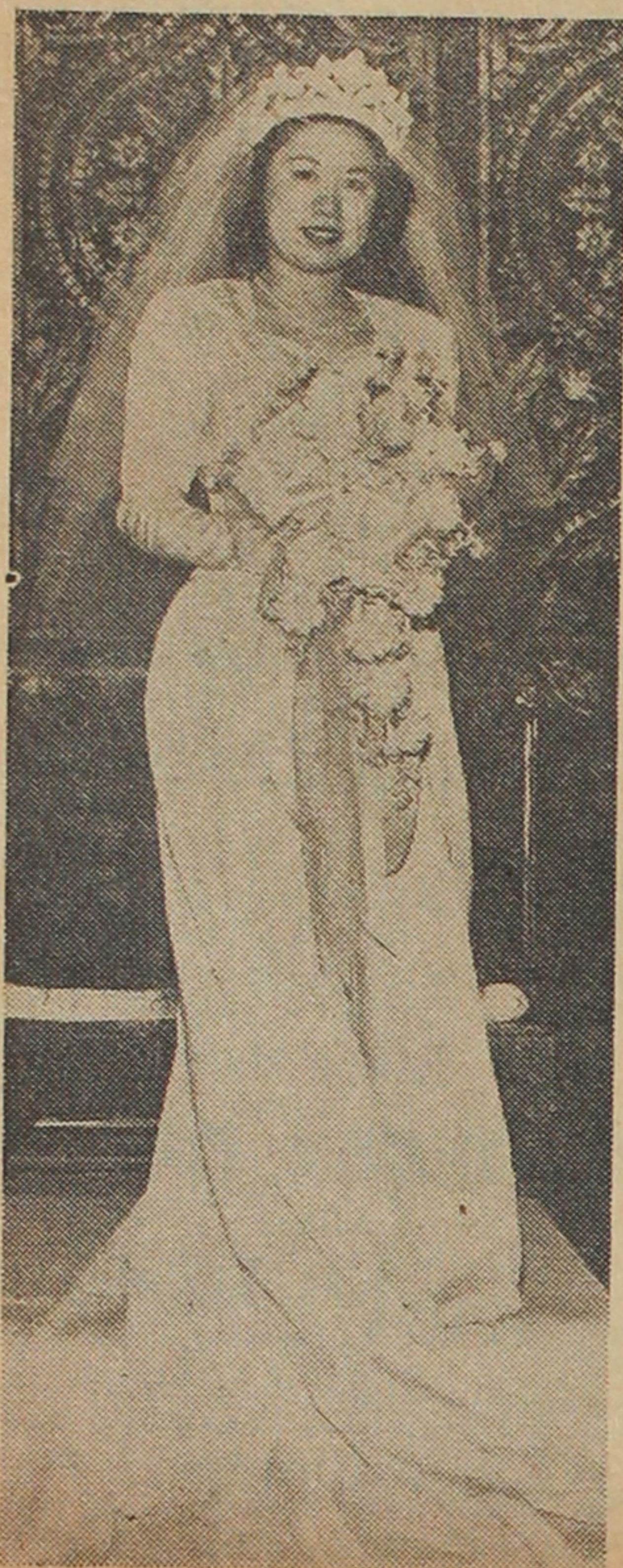
EMPIRE PRINTING COMPANY

133 N. San Pedro St.
Los Angeles 12,
TUCKER 2667

Tanouye-Nakama Nuptial Vows Recited Saturday

Society & Women

Kusanagi-Miyamura Nuptial Held Feb. 12 at Shatto



In a beautiful candlelight rite at Shatto Chapel, Shizuko Kusanagi, eldest daughter of Mr. and Mrs. S. Kusanagi, was married to Takeshi Miyamura on Saturday, February 12.

The 7 p. m. nuptial ceremony was read by the Rev. Mr. Fiske.

The bride walked down the aisle in a lovely white brocade gown, simply designed with a sweetheart neckline, long tapering sleeves and a gathered skirt extending into a court train.

Her fingertip veil was caught with a clover-leaf design crown. She carried a bouquet of white carnations, Roman hyacinths centered with an orchid.

Matron of honor for the bride was Mrs. Yaeko Yokoyama, who was attired in blue taffeta. Ellen Miyamura, who served as flower girl, was gowned in pink taffeta.

Best man was William Hirata. Ushering were Charles T. Hirata and Herbert Yokoyama.

The wedding ceremony was followed by a reception at the chapel. The newlyweds will make their home at 430 S. St. Louis St.

Dress Designer Reveals Troth to Noble Maekawa

HONOLULU — St. Valentine's was the appropriate day for the announcement of the engagement of Mitzi Sugita, head of Mitzi's School of Dress Designing and Tailoring, to Noble Maekawa of



MRS. HEIJI NAKAMA — She was the former Ritsue Tanouye before her marriage last Saturday, February 19, at the Nishi Hongwanji. —(Photo by Toyo Miyatake).

Ritsue Tanouye, daughter of Mr. and Mrs. Shigeo Tanouye of San Diego, recited her nuptial vows last Saturday with Heiji Nakama, son of Mr. and Mrs. Taro Nakama of Azusa, at the Nishi Hongwanji.

The Rev. Jokai Kow officiated at the 4 o'clock, single ring ceremony. The bride wore a gown in traditional ivory satin. Shirred satin trimmed with lace around the square neckline was charmingly set off with a triple strand pearl necklace. A double-tiered finger-

Mr. Maekawa was associated with the Chrysler Motors Corporation.

tip ring trained a background for the gown which extended into a court train.

The bridal bouquet was made up of orchids and white roses.

Peggy Nakamine was maid of honor in a yellow taffeta gown. She carried a bouquet of pink roses, as did Ruth Uchimura, who served as bridesmaid in a gown of aquamarine taffeta.

Betty Jo Ige was flower girl in a light pink taffeta gown.

Best man for Mr. Nakama was Yoshio Miyasato. Tom Taira was usher.

A reception for 300 wedding guest was held at the Kow Nan Low at 6 p.m. After a honeymoon in San Francisco, the couple will make their home in Azusa.

Issei Nishikawa JEWELER

DIAMONDS
Hamilton & Elgin Watches
233 1/2 E. First St. VA. 4041

Nisei Florist

Flowers for All Occasions
328 EAST FIRST ST.
TUCKER 3901

TWIN CLEANERS

At New Fashion Dye Works
3626 S. Western

- Pro-tex-sheen" Cleaning
- Guaranteed Quality Work
- We Call for and Deliver

Lane and Lyle Nakano
Parkway 1984

SOCIAL Silhouettes

by Peggy

Spring has sprung,
The Grass has riz,
I wonder where,
The flowers is.

THERE'S NO DENYING THAT SPRING IS IN THE AIR . . . "Spring Frolic" is the theme of the dinner dance to be sponsored by the Pasadena JACL at the American Legion Hall, Post No. 13, on Saturday, March 26 . . . Tetsu Bessho's orchestra will play for the event . . . Dr. Tom Omori is chairman of the sports formal affair.

A CENTERPIECE OF PINK AND BLUE UMBRELLAS under which a diaper-clad rubber doll sat encircled by pink and blue candles extended their Portland friends' best wishes to Mr. and Mrs. Sam Naito at an afternoon buffet luncheon at the Milton Maeda's residence on Sunday, February 6 . . . Mrs. Naito is the former Mary Kawanami, eldest daughter of Mr. and Mrs. R. Kawanami of Los Angeles.

The room was decorated with pink and blue crepe paper, sweet peas and candles . . . Centered on the buffet was a cake with a stork decoration, encircled with tiny celluloid dolls, each either carrying or sitting in a small blue or pink crepe paper umbrella.

Upon Mr. and Mrs. Naito's arrival, the well-wishers greeted them with a "name-selection-for-the-forthcoming-baby" game . . . immediately following the luncheon, a pink and blue decorated bassinet filled with lovely gifts from all present was wheeled into the room.

Those present included hostesses Mesdames Milton Maeda, Roy Maeda and Miss Mary Minamoto; and the Mesdames Tom Tsunemitsu, Hiram Hachiya, Ted Tsuboi, Bill Oda, George Marumoto, George Azumano, Robert Kinoshita and Francis Hayashi.

ANOTHER PORTLAND NOTE OF INTEREST IS the singing debut of Bette Ann Minamoto before approximately 30 persons at the residence of County Coroner Earl Shea . . . Miss Minamoto sang "Ave Maria" . . . an active seventh grader at Shattuck School, she is basketball captain and has held the class offices of president, treasurer, first vice-president and secretary.

AN UPTURNED UMBRELLA DECORATED with blue and white crepe paper held the many gifts for bride-elect Sue Kimura at a shower held for her last Sunday by Lillian Wada, Beverly Yamamoto and Sue Takimoto at the Wada residence . . . Miss Kimura is to be married to Nappy Sekiguchi of Hollywood on March 20 . . . among those present to wish her well were Grace Wada, Tomi Kasai, Frances Kako, Jane, Alise and Sharon Sato, Liz Kuwahara, Amy Sakamoto, Fuji, Fujikawa and Louise Yamazaki.



BRIDAL SHOWER (From l. to r.) Bride-to-be Sue Kimura was feted by hostess Lillian Wada and her friends at the Wada residence last Sunday.

AYAKO MORIKAWA, FORMERLY OF FRESNO, was honored at a surprise bridal shower at the home of Amy Nakano last Sunday . . . Miss Morikawa is engaged to be married to George Nishio of Los Angeles sometime in late March . . . among those present at the shower were Haruko and Nancy Morikawa, Toshi Yokota, Sumi Mitsuyoshi, Fuyuko Tani, Masako Nishihara and Ruby Hifumi.

THE YOUNG PEOPLE OF THE CLEARWATER Baptist Church gave a surprise housewarming party at the new home of Mr. and Mrs. David Yoshida in Bellflower on February 11 . . . after assembling at the church first for a valentine party, the group surprised the Yoshida family with a unison chorus of "A Happy New Home to You" as the door was opened . . . May Tsujioka was in charge of the refreshments, and a gift appropriate to the home was presented the Yoshidas by the group.

Revlon,
Coty and
Yardley
Cosmetics

Prescription
Specialists

Complete Line of Nationally Advertised
Merchandise at "Fair Trade" Prices

Kyodo Drug

316 E. First St.

Phone MU. 3894



TANAKA BEAUTY SALON

Marion Tanaka
312 E. First St. Rm. 511
Call TU. 1764 for Appts.

Tom Yamanaka

Lo-heat Stainless Steel Cook Ware
Demonstration by Appointment
12946 1/2 Addison St. NO. 3-2924
Van Nuys, Calif.

PICTURES FOR ALL OCCASIONS
MAKE APPOINTMENT TODAY

Call MUtual 6637

TOYO Miyatake

318 EAST FIRST STREET

STUDIO
LOS ANGELES 12

THE MOST COMPLETE LINE OF
JAPANESE RECORDS

Bun-ka Do
GIFT SHOP

137 S. San Pedro

Phone MA. 8673

PHOTO SUPPLIES • WATCH REPAIRING • CAMERA REPAIRING

House of
PHOTOGRAPHY
JEWELRY

roy hoshizaki
george mizuno

307 EAST FIRST STREET * L. A. * MADison 8615

CLUB Notes

Luanans

An informal "Western Round-up" was held by the Luanans at the Southside Center YWCA last Sunday evening. The party was in honor of those who helped with the club's recent dance, "Sweetheart Swing."

Colleens

A bridal shower honoring their president, Mrs. Johnny Miyawaki, nee Hisako Konami, was given by members of the Colleens at the home of Chieko Yoshii on February 20.

Among those present were Ruby Ushijima, Veronica Yamaguchi, Frances Nishioka, Kaz Yoshigai, Sandy Sunago, Bernice Setsuda, Kiyoko Ishida, Irene Noda, Chieko Yoshii, Lucy Nakano, Isabel Watanabe and Miyo Ishigami.

W. L. A. Windsors

Fox Hill Country Club has been chosen the place for the West Los Angeles Windsors' dance on April 2 with the theme, "Suddenly It's Spring." Joe Mays' orchestra will play for the event.

Mary Yanokawa is chairman of the affair, and aiding her on the committee are Ruth Miyata, Haru Nakata and June Yamada.

The club is also planning an Easter party on April 17, a Mother's Day tea on May 2 and will continue to send relief parcels to Japan, according to Mary Ota, publicity chairman of the group.

Kaperettes

The previously postponed "Deep Purple" dance, sponsored by the Kaperettes, will be held tomorrow evening, February 26, from 7:30 p. m. until midnight, according to Dorothy Naito of the club.

Location of the dance has been changed to the Pasadena City College Women's Gym, 1750 E. Colorado St. in Pasadena. Patrons are

requested to use the west entrance of the campus on S. Hill Ave.

Tickets will be sold at the door, and doors will be closed at 10:30 sharp.

Double "I"

Members of the Double "I" and their guests enjoyed a six-mile hike climaxed by a hot lunch and dancing at Camp Ivy, Pasadena "Y" Lodge, on February 20.

The girls are also planning a "Spring Frolic" stag-stagette dance together with the Modernettes of Pasadena. The affair is to be held on March 19 at the Pasadena YWCA, according to Grace Shibata, publicity chairman.

Mam'selles

Honoring bride-elect Terry Sumii, the Mam'selles held a shower last Sunday at the home of Miss Sumii's cousin. Miss Sumii will be married to Nob Hatashita on March 6.

Co-hostesses of the bridal shower were Sayo Sumii and Sumi Nakanishi.

Among those present to fete the bride-to-be included Miyo Kitaura, Tomi Miyahara, Nancy Young, Aiyce Nakanishi, Mary Nakanishi, Alice Okuda, Lorraine Sumii, Dot Shindo, Mrs. Tom Kitagawa, Mrs. Jim Kawakami, and Mrs. Bob Take-shita.



HEARTBEAT FOR HIHEIGENS—Members of the Hiheigens which met for the club's first dance on February 13 at the North Hollywood YMCA include: (First row, l. to r.) Chips Otoshi, Hoshi Otoshi, Toru Shishido, Marie Ohta, Hiro Chakuno. (Second row, l. to r.) Kay Morimoto, Margie Morioka, Asa Imada, Betty Wada, Haruko Noda, Yasuko Noda, Yo Muranaga. (Third row, l. to r.) Tom Oyama, Jim Sakurai, George Endo, Tom Noda, George Ohta, Tad Hayashi, and emcee for the evening, Johnnie Inouye. —(Photo by Its Endo)

Minneapolis

The Minneapolis Club held a pot luck tacos dinner at the home of M. Izumi, 2079 1/2 Edgehill Dr., on January 20.

The group will help out with the Shonien, Japanese children's home, as their next project.

Hiheigens

Following an all-day snow hike to Camp Baldy, the Hiheigens of San Fernando Valley sponsored a pre-Valentine dance at the North Hollywood "Y" on February 13.

With "Heartbeat" as its theme, Johnny Inouye emceed the social to a grand finale at midnight. President Toru Shishido introduced to a crowd of 200, vocalist Harry Tashima, who sang two numbers accompanied by Kiyoko Nishi.

Attending the sports formal affair were the Les Marchez, Blackguins, Val-Seis, Val Squares and other special guests.

Members responsible for the success of the dance were Marie Ota, refreshments; Johnny Inouye, program; and Tom Oyama, decorations.

Debutantes

"Sentimental Swing," an invitational Valentine dance was held by the Debutantes at the International Institute, February 18, according to Tomi Kohno, publicity chairman.

Chaperons of the affair were Roy Uno, Roy Hoshizaki, Yas Hino, Steven Sakai, Taro Kobara and Hideomi Matoba.

Advisers of the club are Sue Takimoto and Linda Kuroiwa.

Manzaknights

With the Double "Ts" as guests, the Manzaknights held an installation dance at the International Institute on February 19. Inaugurated were Shap Kuwahara, president; Min Imai, vice-president; Joe Iwaki, treasurer; and Jun Okimoto, secretary.

The club is also planning a snow hike in March as a joint affair with the Bel Sharmers.

Maharanias

"Springtime in Pastel Moods" will be the theme of the dance to be sponsored by the Maharania

CHURCH NEWS

UNION CHURCH

The First Presbyterian Church will be the guests of Union Church on the evening of March 6, when the festivities will have "Ohina-matsuri" as its theme.

The D.D.T.'s will have a jam session in the church gym at 2:30 tomorrow afternoon. The church gym is open every Tuesday evening from 7:30 to 9:30 p.m. for recreational volleyball.

PASADENA UNION

Mary Nishi, Suzie Kawahara, Chieko Amai and Paul Tanzawa were representatives from the church to the Pasadena-San Gabriel area Westminster Fellowship dinner at the Pasadena Presbyterian Church on February 15.

Also attending were Eiko Matsui, Mrs. Aki Abe and the Rev. Donald

Toriumi.

Church members gathered February 17 to give the social hall and kitchen an early spring cleaning.

Ken-Ben Jewelry

DIAMONDS WATCHES JEWELRY

2702 W. Jefferson Blvd.
KEN OSAJIMA
Expert Watch Repair

So. California Appliance Co.

Features

THE NEW

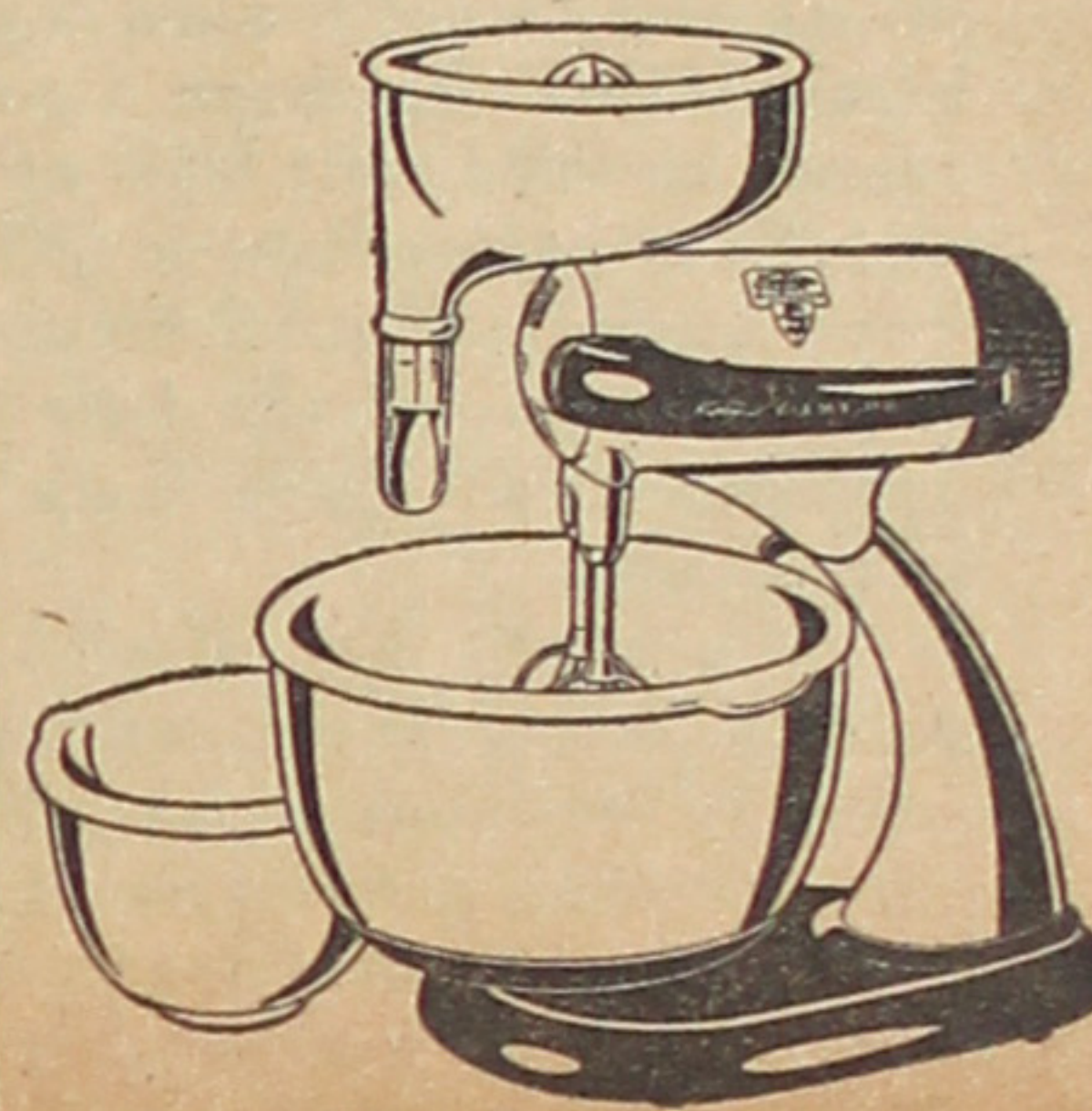
Sunbeam MIXMASTER

Reserve Yours Now

by phone

Limited Quantity

MI. 0362



309 E. First St.

PA. 6406

RE. 2-6563

KASHU

Realty Co.

2700 W. JEFFERSON

Ben Adachi Kazuo K. Inouye

Dean A. Hoshide

Ray S. Sugimoto

NOTARY PUBLIC

ANSON T. FUJIOKA

GENERAL INSURANCE

Fire-Auto-Life-Liability

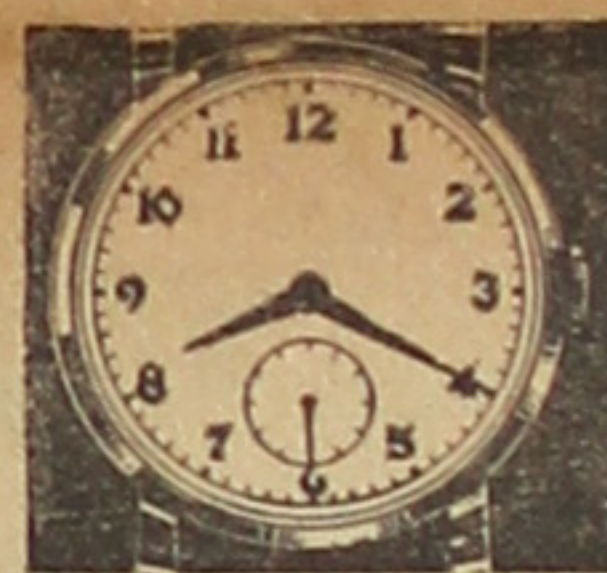
324 S. Fresno — AN. 3-4623

3568 E. 1st St. — AN. 2-0125

the date
MAY 29
the place
Los Angeles
Breakfast

Club

are you planning
to be there?



OTOI JEWELRY

WATCHMAKER

23 YEARS EXPERIENCE

WATCHES — DIAMONDS

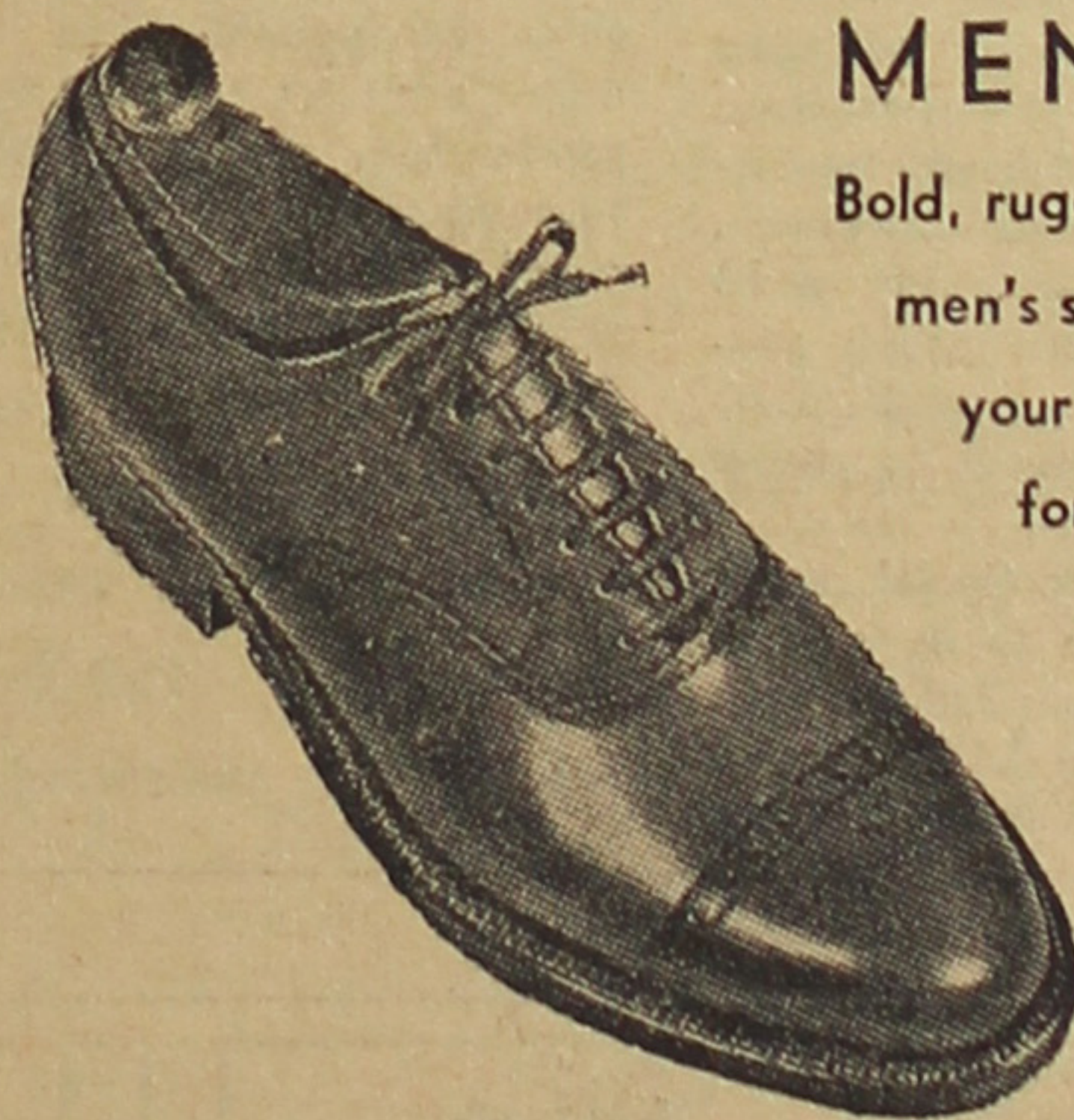
260 East First Street

Corner of Miyako Hotel

3670 S. Western Ave.

ROchester 1903

Grand Opening

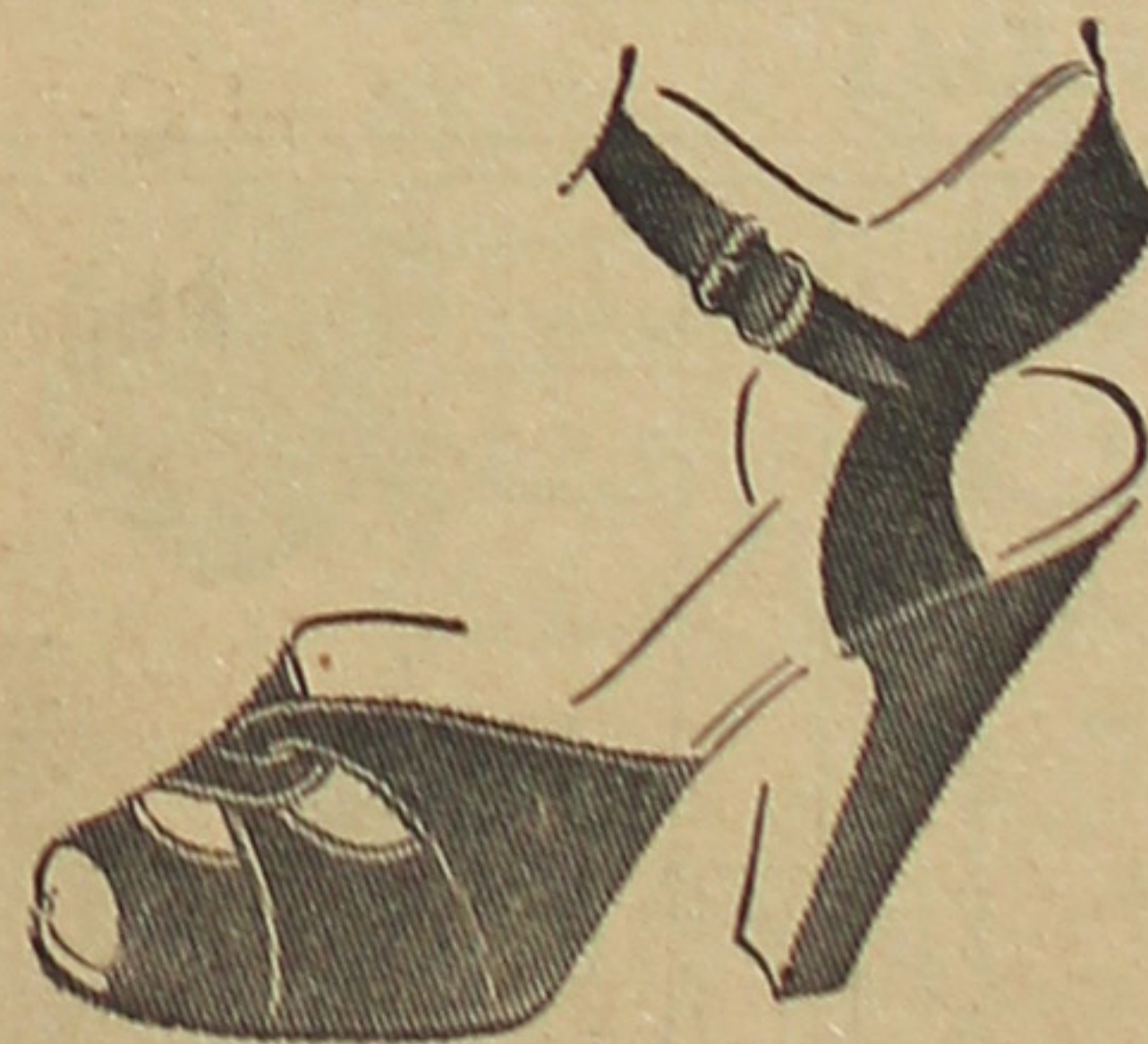


MEN...

Bold, rugged line of
men's shoes... near
your home location
for the convenience
of Westsiders

WOMEN...

Stylish shoes for
women... Our new
location is for your
convenience



CHILDREN...

Full line of comfortable shoes that can stand
punishment... walk to our conveniently
located new branch store.



Special Opening Sale from Feb. 26 to March 5
Asahi Shoe Co. Jefferson Branch
2109 W. Jefferson (Arlington & Jefferson)
RE. 34280

LELAND HOTEL

MODERN FURNISHED ROOMS
HOT AND COLD WATER

MUTual 0795

116 1/2 E. FIFTH ST.
NEAR ALL DEPOTS

LOS ANGELES 13
GEORGE SUMIDA, Prop.

WESTMORELAND

STERLING



SILVER

The solid silver you see at home by appointment

Ritsuko Kawakami
Distributor

208 North Saratoga St.
Angelus 3-2528

Please notify immediately of change of address giving both old and new address. Allow two weeks for change to become effective.
Editorial and Business offices at 312 E. First St., Room 408, Los Angeles 12, California. Subscription rate: \$3.50 a year. Phone: MADison 6-7521.

★ THE FIRST STEP

The most heartening thing about the Music Scholarship Contest and the two plays put on for its benefit last Saturday and Sunday night here was the capacity crowd in attendance, despite the fact that the two-day program was a distinct departure from the usual variety show.

It was a heartening sign that "Standing Room Only" crowds could be attracted by the more cultural type of musical and dramatic offerings. It was heartening to note the large number of older, more established Nisei in attendance at the music contest. It was heartening to see the many Nisei faces in the crowd Sunday night, when "Madame Butterfly" was presented all in Japanese.

And above all, it was heartening to know that the people were responding to the appeal of public-minded leaders to establish some sort of a community scholarship fund to aid young Japanese Americans with talent and ambition in creative work to achieve success in their chosen field.

As Yaemitsu Sugimachi, director of the American Japanese Broadcasting Society, sponsors of the two-day event, stated, there is a wealth of Japanese culture that is a facet of the Japanese nation which has been distorted and neglected by the events of the last two decades.

The re-introduction of the best in Japanese drama and music into Western culture is a project that is well worth the undertaking.

Too little of it has been done in Nisei ventures here into drama and music; too much of such ventures on the part of the Nisei until now has been a poor imitation of what is only on the second or third class level of American music or drama.

Now that we have seen that attempts at programs featuring good music and good theater can attract as great a crowd as any ordinary vaudeville type of talent revue, it is hoped that improvements on "Love Cure" and "Madame Butterfly" will be forthcoming.

It is hoped that efforts of this sort will help to uncover and develop acting talent, writing talent, singing talent or dancing talent in the future which will aid Japanese Americans in making their peculiar contribution to American and world culture.

Our congratulations to all those who worked, both on-stage and backstage, last Saturday and Sunday nights, to take the first significant step in the right direction. Our congratulations to the audience who made this possible.

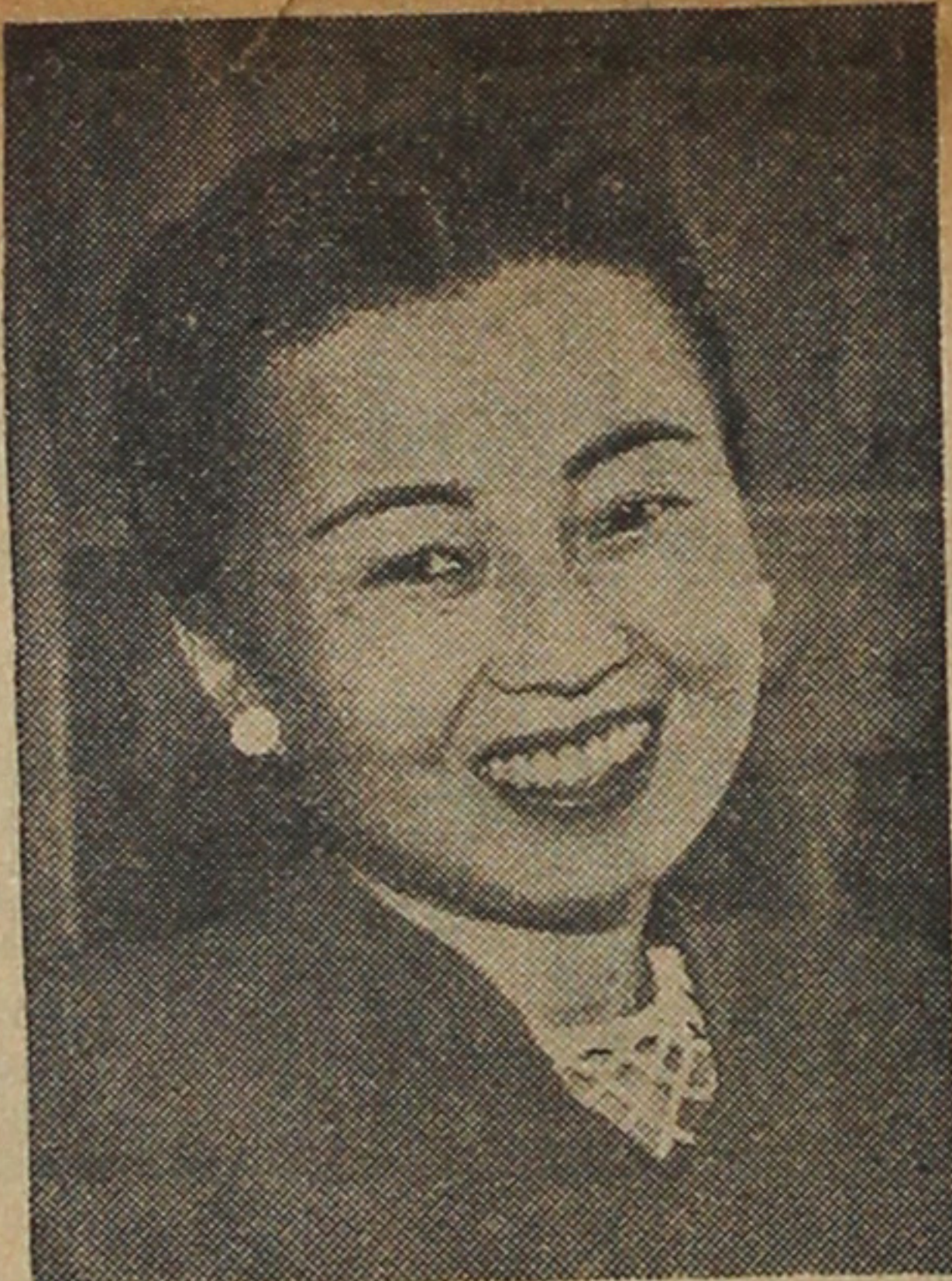
CROSSROADS

CITES . . .

MRS. GARD YOKOE

A sophisticated lady with a disarming sense of humor, Mrs. Gard Yokoe, more familiarly known to her friends (which are legion) as "Merijane" is cited by CROSSROADS this week as an outstanding Nisei woman.

Under her careful guidance, some 250 "teen and twenty" girls who comprise the membership of the Women's Athletic Association here are learning to achieve maturity in sportsmanship, citizenship and community responsibility through athletic endeavors. Mrs. Yokoe also finds time to



advise two other girls' club, the 7 M's and the Luknes. She has assumed the burden of advising these girls' clubs on her own time in a busy schedule of being housewife, mother and businesswoman.

"The teenage girls today need more guidance from older women," she maintains, and discredits any guise that one is too busy to help.

Active in organizational work with the YWCA in Denver during the war, Mrs. Yokoe also takes great interest in the work of the League of Women Voters.

★ A LETTER TO THE EDITOR

"FACE TO FACE"

Dear Editor:

As the March of Dimes brings its campaign to a close, I feel urged to mention through this column, the outstanding work being done by the National Foundation for Infantile Paralysis.

Recently, my younger brother became afflicted with polio and since has been hospitalized for necessary treatments.

Although his case may be regarded as comparatively light, it brought those of us close to him face to face with the disease itself and into a sudden awareness of the organization created to lead, direct and unify the fight against it.

Shortly after my brother was afflicted and hospitalized, a special delivery letter from the Foundation arrived, expressing its sympathy and offering to assist in the financial burden created, should that burden become too heavy over the long period of recovery.

Subsequently, I met with a representative of the organization and a financial arrangement was made, which, needless to say, was most helpful and gratifying. The query was entirely unsolicited on our part and represents but one small phase of the vast work of the organization. (I mention this only by way of illustration.)

Toward the end of ultimately eliminating infantile paralysis as a menace to mankind, the National Foundation has outlined the following fourpoint plan of action: (1) Medical care and treatment regardless of age, race, color, or religion; (2) epidemic emergency aid for stricken communities; (3) research and (4) education.

Created in 1938 by the late President Roosevelt, the Foundation is now comprised of 2,737 chapters through which the disease has been fought relentlessly and courageously. It is amazing and heartwarming to learn in detail the effective work of the organization.

What each individual has been asked to give towards the March of Dimes is small—yet the results of the concerted effort of the entire nation are far-reaching.

I am sure one would feel more than compensated in extending every support to this worthy organization, whose problem it is to combat the disease termed "the most ominous of the unsolved mysteries of the last half century."

Sincerely,

(signed) Dick Fujioka
1400 Gordon St.
Hollywood 28, Calif.

Joe Oyama

★ MANHATTA . . . "Not like the 'slicks' say . . ."

NEW YORK The other night, our wife returned home quite enthused about a discussion that she had heard and participated in, on Burma.

The occasion which featured this session was the monthly meeting of the Japanese Methodist Church's "Topic of the Month" Club conducted by the Young Peoples Society.

Until she had listened to the two speakers who led off the discussion (a Mrs. Paw U and another young Burmese woman whose name escaped her), our wife confessed that she had only associated that eastern country with the Burma Road.

But that night she learned, among other things, that Burmese women are among the most free in the world, and that as long as they are qualified, they can enter any profession, and with the same opportunities for advancement as men.

"They're way ahead of the women in Japan," our wife remarked.

Whereas American "slicks" (magazines) have usually emphasized the adroit way the Burmese eat with their fingers, not to men-

tion the pagan customs of the "hill people," the speakers of the evening sought to reveal the quiet ways of the average Burmese.

During the Japanese occupation of Burma, they said, the Burmese had taken food, etc., to the Allied prisoners despite threats of imprisonment. Yet, later, when the Japanese were taken prisoners, the natives felt sorry for them.

This amicable nature of the Burmese, however, had squeezed them so much into the background that the principal merchants and landowners are Indians and Chinese.

The speakers believed that with the complete independence of Burma from Britain, there will be much room for progress. The present socialist government is beset by a rebellion from the hill people who are good warriors but lacking in education and they would therefore be unable to govern themselves.

They said further that the most significant event in Burmese history was the advent of Buddhism, which was a revolt against the Hindu caste system.

Both of the speakers, our wife told us, are Christians.

SPEAKING VOLUMES . .

This week's news releases from publishing companies such as Coward-McCann, Simon and Schuster, William Morrow, G. P. Putnam and John Day reviews the following books . . .

The far reaching effects of the atom bomb will be contained in a book entitled "Report on America" which will be published by John Day on March 3rd. "Americans can neither defend themselves nor adjust force nor employ force any longer successfully," writes Robert Payne, the gifted British author, and one of the few writers so far to consider the impact of Hiroshima and Nagasaki upon America's own future. He writes critically, yet constructively, of "the people who disintegrated the atom." We now have, he says "the task of integrating humanity".

G. P. Putnam's Sons have just published "Way of a Fighter; The Memoirs of Claire Lee Chennault, Major General, U. S. Army (Ret.)" in which the famous leader of the Flying Tigers pulls no punches in taking the reader behind the scenes at several of the great wartime conferences and exposes the confusion and personal politics which went on. In the final section, General Chennault deals with the tragic happenings in China since the end of the war and also gives an eloquent presentation of what we must do to preserve China and all Asia from falling into the grip of Communist totalitarianism.

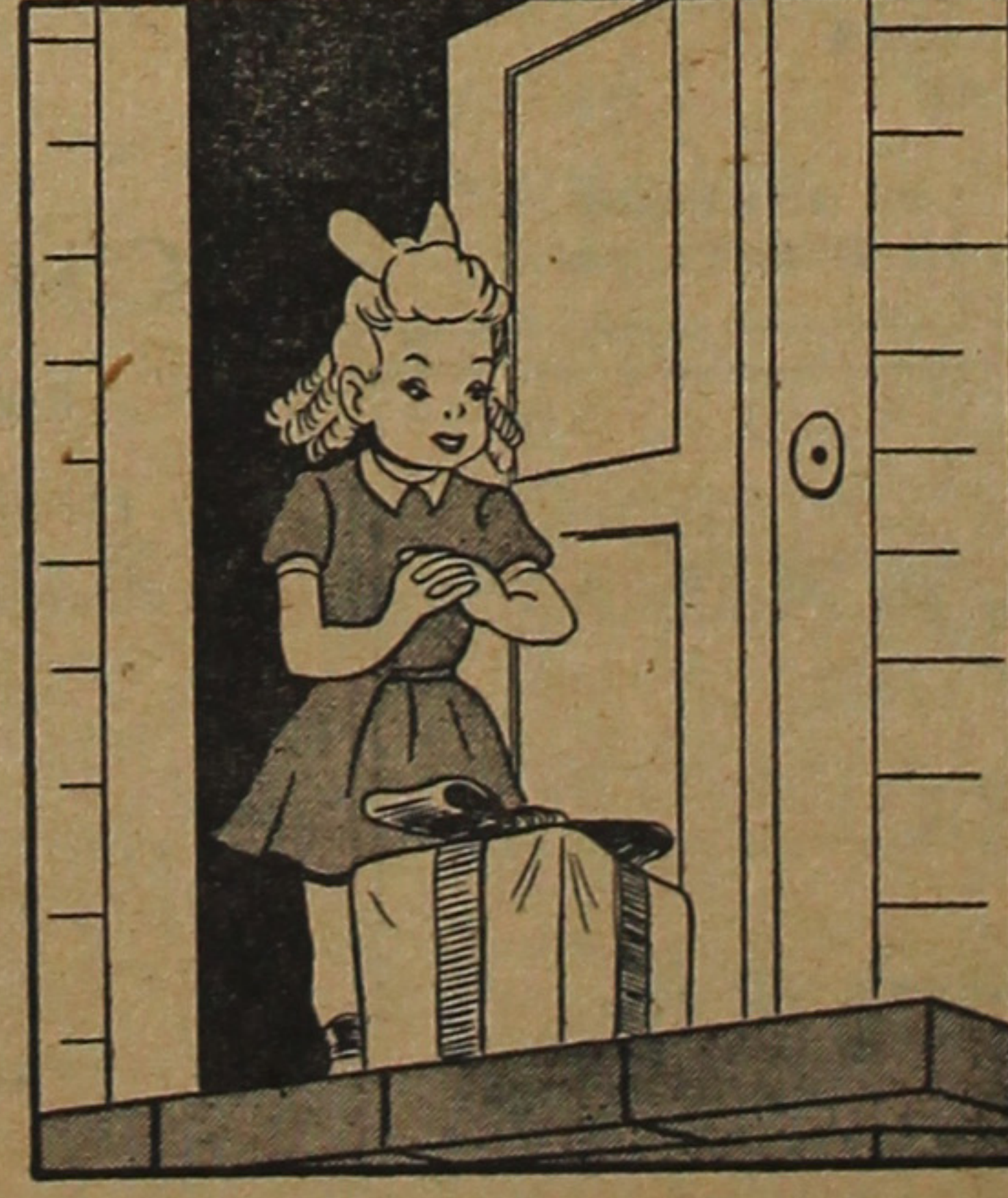
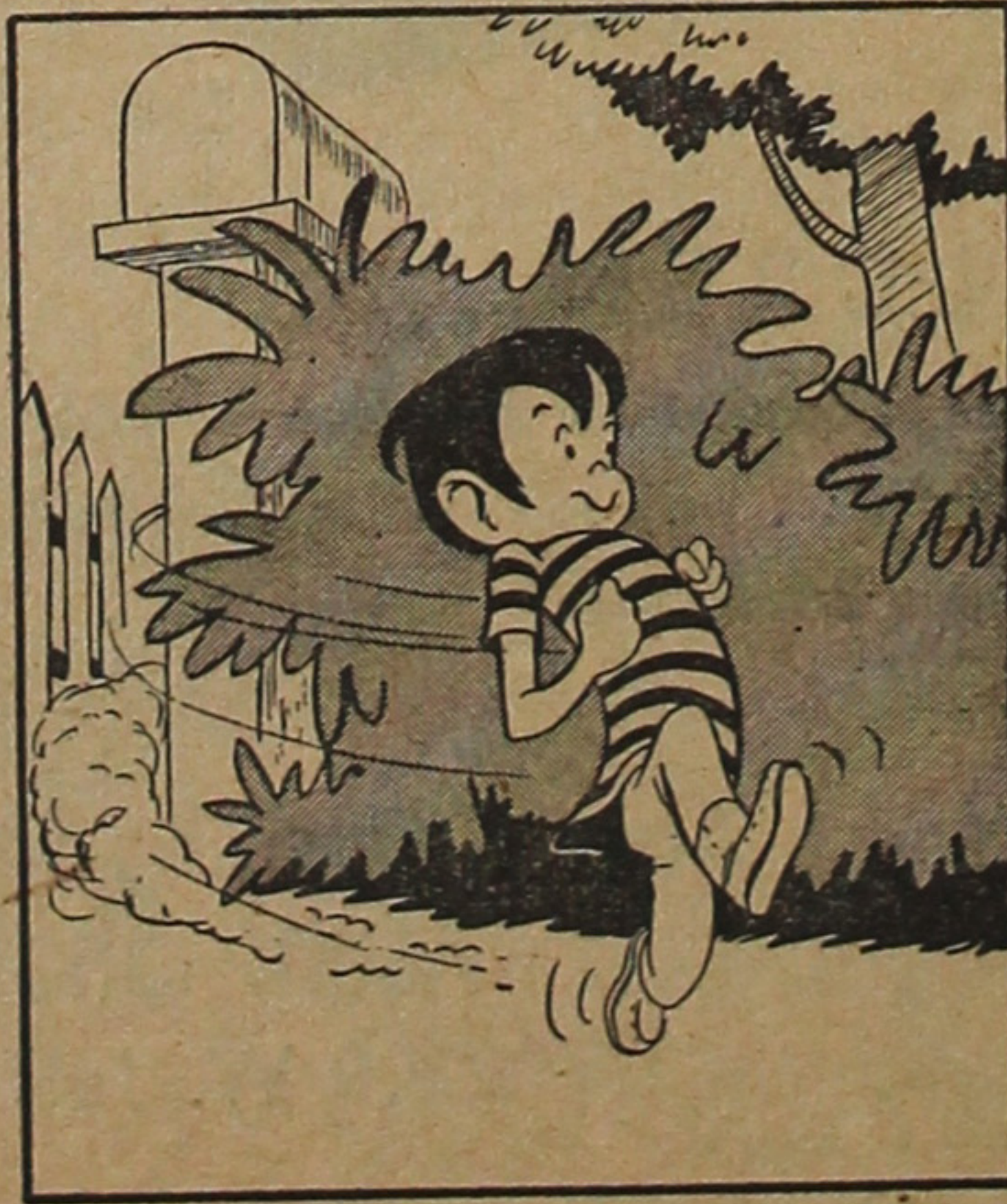
A new version of the old story of a man trying to find his spiritual self in a materialistic age, to acquire a perception beyond the perceptible dimensions is "The

Last Romantic" by Charles Bonner, which Coward-McCann will publish in the spring. Despite the fact that much of the popular literature of recent years has required that the protagonist of this eternal struggle come from a small town or a large slum, Mr. Bonner has deliberately built the story around a man of middle class in the New York orbit. Mr. Bonner has contributed to most of the leading magazines, and is the author of "Legacy" (used as a basis for the film, with Ingrid Bergman, "Adam Had Four Sons"). During the last war he worked in OWI as a radio news editor and as the writer and broadcaster of the feature "America Today."

Books for children dept. . . . In A. E. Walden's "Sunnycove," 18-year-old Vicky Lind wanted to be an actress, so her brother sent her to Sunnycove Playhouse, a Connecticut summer theater. In spite of her lack of beauty, Vicky achieves success and finds romance, too. Age 12-14. . . "White Boots" by Helen Orr Watson is about a lovable little Boston terrier who spends a year searching for her master in Puerto Rico. She aids many unhappy natives and, through her adventures, life on the island is presented in engaging fashion. Age 10-11. . . The talkative ghost of an amiable 17th century witch which turns up in a British village in 1944 when an American sergeant accidentally disturbs her grave with his bulldozer, is the story of "The Witch of Scapfaggot Green" by Patricia Gordon. Two children, who discover they are her descendants, are delighted by the strange things that happen when the witch is about. Age. 9-10.

By Tom Okamoto

DEEMS



ALL ORIENTAL GOLF TOURNEY SLATED

Sponsored by the Civic Toggery Men's Shop and under the auspices of the Top Notch Golf Club, an All-Oriental Golf Tournament will be held on March 13 and 20 at the Baldwin Hills golf course, it was announced this week. Merchandise prizes totaling over \$300 will be awarded to contestants in this two-Sunday golf gigantic with every participant receiving a prize.

The tourney will be open to all orientals in Southern California and all entries are being accepted at Civic Toggery, 111 So. San Pedro St. Deadline for all entries is March 6th.

The prizes to be awarded range from a \$65.00 suit for first place to a 10th place \$7.00 sport shirt. A \$1.50 necktie will be given to all players.

A trophy will be donated by the CROSSROADS to be presented to the low gross winner.

Each player will receive bonafied handicap rating.

WLA Edges Mobil
THREE-WAY TIE STILL EXIST

NAU Aye Games

JACKSON LEAGUE

—Friday, February 25.
7:00 Mustangs vs. Evergreen Saints
8:10 Rams vs. Nitake Insurance
9:20 Cougar vs. Angels

MARSHALL LEAGUE

—Monday, February 28.
7:00 Panthers vs. Pasadena Ayes
8:10 Naturals vs. Gophers
9:20 Pasadena Huskies vs. Trobables

RIIS LEAGUE

—Tuesday, March 1
7:00 Palms Cafe vs. Nisei Drug
8:10 T & C Barber vs. Cal Vita
9:20 Seimans vs. Chien Huas

CHIEN HUA (41)—W. Hoo 10, J. Chu 15, B. Quon, E. Lee 3, D. Wong 4, S. Quon 7, K. Hoo 2.

PICOPANTS (32)—S. Sumii 3, M. Kawasaki 6, M. Teramoto 7, Y. Kimura 6, M. Ogimachi 4, T. Kawasaki 3, D. Nagafuchi 3.

SEINANS (46)—A. Sakura 6, D. Kaneko, B. Matsunaga 14, N. Takeuchi 5, M. Shigaki 1, J. Sugihara 2, S. Nogawa 14, T. Nimura 2, H. Ota 2.

PALMS CAFE (17)—S. Tanaka, H. Oga- wa 1, L. Kawaguchi 9, C. Miyashima, J. Kimura, M. Shimoto 2, N. Yoshida 3, S. Okuno 2.

NISEI DRUG (10)—H. Nakano 13, S. Ma- tsuoka 1, Y. Osajima 10, H. Nishisaka 2, M. Kanda 2, K. Uchima 4, J. Taketaya 8. T & C BARBER (37)—T. Nagata 3, M. Ono, H. Tasaka 5, M. Kinoshita 12, J. Okada 11, G. Wada 6.

RIIS SINGLE AYE	W L Pct.
Chien Hua	7 1 .875
Pico Pants	6 2 .750
Nisei Drug	6 2 .750
T & C Barber	3 3 .500

Palms Cafe 0 8 .000

ARCHONS (66)—S. Yee 12, G. Kim 27, D. Park 5, G. Lyou 2, D. Park 10, R. Ka- wano 4, E. Yim 2, H. Lee 4.

SCARLET A (13)—M. Yoneda 4, H. Sa- damitsu, J. Ozaki 2, K. Gojohori 3, C. Sa- kurai 2, R. Kato 2.

ARGONAUTS (30)—Y. Morinishi 9, B. Nishino 3, W. Tsukahira 6, S. Terasawa 6, G. Yokoyama 2, L. Nomura 4.

BISONS (25)—B. Chung 1, H. Kageyama 11, F. Kishi 3, R. Mido, H. Shinto 2, J. Watanabe 8.

EL PATIO (42)—T. Shishima 7, W. Aki- yoshi 19, A. Keimi 6, S. Fujinami 2, J. Ta- kagi, T. Shinto 1, M. Suzuki 2, A. Mizu- noe 5.

WLA AYES (12)—R. Tamaki, S. Taka- hashi 8, M. Kosaka 2, N. Hori, M. Degu- chi, G. Kido 2.

MANUAL SINGLE AYE	W L Pct.
Archons	8 1 .889
El Patio Cleaners	7 2 .778
Argonauts	6 3 .667
Bisons	3 6 .333
WLA Ayes	3 6 .333
Scarlet A	0 9 .000

COUGAR JRS. (30)—S. Kitabayashi 6, T. Shibata 3, B. Wada 7, G. Koga 2, T. Shi- roma 2, G. Kitabayashi 6, Y. Kamiya 4.

RAMS (28)—K. Yamamoto 5, K. Mori- shita, I. Morishita 3, Y. Hirata 6, J. En-

NITAKE INS. (25)—R. Shimizu 1, T. As- dow 5, M. Matsumoto 9.

ato 7, S. Ide 6, T. Kawamura 1, H. Abe 4, P. Oki 3, B. Shimizu 3.

PAC. SHOYU (17)—J. Kosha 1, S. Oga- neko 8, H. Oshiro 4, Y. Yoshida, K. Araki, J. Tokeshi 2, G. Oshiro 2.

EV. SAINTS (49)—B. Kakimi 9, T. Shi- motsuka 5, H. Kono 21, Y. Shimoguchi, G. Kurisu 14.

ANGELS (24)—N. Morita 9, H. Kubo 6, R. Kikuchi 6, S. Nakagawa, T. Shiroma 2, E. Ninomiya 1.

Jackson Single Aye	W L Pct.
Cougar Jrs.	6 2 .750
Evergreen Saints	6 2 .750
Angels	4 4 .500
Pac. Shoyu Mustangs	3 5 .375
Nitake Insurance	3 5 .375
Rams	2 6 .250

PASADENA AYES (38)—H. Yamane 17, B. Ugeda 4, M. Hino 7, G. Wakiji 1, N. Yamane 3, T. Yamane 1, T. Hino 3, M. Furuya 2.

GOPHERS (23)—T. Kariyama 5, M. Mi- nami 7, G. Murashige 2, H. Miyamoto 4, H. Mayeda 3, D. Kim 2.

NATURALS (27)—K. Kaita 3, T. Kiri- yama 2, S. Mayeda 12, M. Hazama 6, G. Kiri- yama, Y. Nagai 4.

PASADENA HUSKIES (23)—M. Aki- yoshi 2, K. Shida, M. Sakaguchi 9, B. Kawashima, S. Fukuma 8, R. Kawahara 4, H. Kawahara 2.

TROBABLES (36)—G. Matsushige 5, A. Toda 4, H. Fujii 4, J. Taketa 3, H. Yoko- mizo 5, S. Adachi 7, O. Fujii 4, T. Miku- riya 4.

PANTHERS (47)—M. Umemoto 4, W. Mori 12, G. Omatsu 8, O. Iwataki 12, J. Ito, G. Ueyda 11.

Marshall Single Aye	W L Pct.
Pasadena Ayes	9 0 1.000
Panthers	5 3 .667
Gophers	4 4 .500
Naturals	4 5 .444
Trobables	2 7 .222
Pasadena Huskies	1 8 .111

Mobil's final minute rush fell shy by one point as the WLA Buddhists eked out their sixth straight victory in the featured fray at Chap- man last Sunday, 31 to 30. Southern California Appliance and Wah Kue also kept their unblemished records intact to remain deadlocked with WLA for leadership in the double aye league.

In a game that developed into the most thrilling game of the season, the Sawtelle cagers came close to blowing a cinch game after running up a remarkable 20 to 7 halftime bulge. The "cold" Mobil unit was able to connect with but two field goals in the first half while the Westsiders' countered with eight fg's and four charities to chalk up their 20. Mats Nitta alone was responsible for half of the total.

Arrear by 10 digits with but three minutes remaining, the red-clad Mobilites ignited for seven points to creep up to within three points of WLA. With less than eight seconds, Ets Yoshiyama sunk a basket to bring his team to within one point of the leaders. A fren- zied pass by WLA following the tally went outside in the backcourt with only three seconds left. The crowd held their breath as Jim Kaneda's desperation two-hander

to conclude the festivities.

(31) WLA YBA Mobil (30)
1 H. Isono f K. Ikeda 6
10 M. Nitta f E. Yoshiyama 6
3 H. Hashima c J. Funo 2
0 W. Isono g J. Kaneda 6
7 B. Tomita g D. Miyakawa 8
Subs: WLA—Y. Shishido, F. Harada
10, J. Hayakawa; Mobil—Y. Hosozawa,
H. Endow, G. Kodama 2, Y. Kido.

Pan Pacific was confronted with too much class in the second game at Chapman as the Southern Cal Appliance team won as they please, 55 to 29. The champs wasted no time in building up their lead as Shiozaki, Maruyama and Fukuto broke loose for ten markers before the fans knew who was playing. The SCAPs had a comfortable 15 point lead before Toru Shimizu countered with a charity for the Harborters' first point.

Tets Fukuto garnered scoring honors with 13 points.

(29) PPFs SCAPs (55)
5 S. Hashimoto f T. Fukuto 13
8 T. Shimizu f J. Maruyama 9
5 T. Ryono c Y. Shiozaki 7
6 T. Okura c G. Mizuno 8
4 J. Okura g H. Uba 1
Subs: PPFs—F. Kamiya, T. Sugamu- ra, P. Ryono 1; SCAPs—K. Komatsu 9,
S. Higa 5, G. Fukuda 2, I. Hasama 1.

Despite Kish Yamate's 18 point effort, the Yahata Huskies lost a 49 to 43 decision to the Toyo Mi- yatakes in the Chap finale. The losers, playing with only five men, held a one point halftime lead.

(49) Toyo Miyatake Yahata (43)
8 B. Ogawa f J. Sakamoto 9
12 K. Ozawa f J. Iwanaga 9
9 E. Hoshi c M. Minadome 1
4 E. Wada g G. Ishitani 6
5 T. Terasawa g K. Yamate 18
Subs: Miyatake—T. Sugita, K. Hoshi,
G. Kanemoto 7, F. Nishizawa, T. Suzuki 4.

The Riis certain raiser found the Nisei Trading lads ringing up an easy 58 to 35 victory.

(35) Saints Nisei Trading (58)
8 J. Kusumoto f Z. Yamamoto 10
0 T. Endo f H. Kinjo 2
8 E. Kato c T. Morinishi 21
6 K. Bessho g H. Fukuda 0
3 T. Suzuki g H. Eddow 2
Subs: Saints—H. Kaysuga 2, M. Fu- kuto 1, J. Toya 7; Nisei—M. Nobuto 2,
H. Kobata 9, T. Kawashima 6, T. Kinjo
1, E. Nakamura 5.

Paced by Jerry Chan's 16 points, the Chinese Wah Kue quintet scored their sixth triumph at the expense of the WSS Centaurs, 49 to 30.

(49) Wah Kues WSS Centaurs (30)
16 J. Chan f K. Kumamoto 0
12 F. Lum f S. Sugano 6
3 B. Wong c Y. Murakami 8
3 R. Chee g G. Sasaki 3
2 F. Dong g R. Tange 0

SCAPs Meet WLA Five at
Riis in Big Game Sunday

CHAPMAN GYM	
1:30 Mobil vs. Wah Kues	
2:40 Huskies vs. Centaurs	
3:50 PPFs vs. Nisei Trading	
RIIS GYM	
2:00 SCAPs vs. WLA YBA	
3:10 L. A. YBA vs. Toyo	
4:20 Saints vs. Gardena	

Sports

"AA" Scoring Race

PLAYERS	Games	TP
T. Morinishi (N. T.)	7	91
J. Chan (Wah Kue)	6	80
M. Nitta (WLA)	6	74
J. Kaneda (Mobil)	7	63
T. Shimizu (PPF)	7	63
Y. Murakami (Centaurs)	7	59
Z. Yamamoto (N. T.)	7	56
S. Sugano (Centaurs)	7	59
S. Hashimoto (PPF)	7	56
J. Maruyama (SCAP)	6	52
C. Kubo (Gardena)	4	51
H. Tashima (WLA)	6	51
K. Komatsu (SCAP)	6	51
P. Lum (Wah Kue)	4	49
B. Nomura (Mobil)	6	48
J. Sakamoto (Huskies)	7	48
S. Inouye (LA YBA)	7	46
J. Okura (PPF)	7	45
T. Okura (PPF)	7	45
T. Fukuto (SCAP)	6	44
K. Ozawa (Toyo)	5	43
G. Mizuno (SCAP)	6	43
J. Iwanaga (Huskies)	7	43
T. Kawagoye (LA YBA)	7	43
G. Sasaki (Centaur)	7	43
K. Ikeda (Mobil)	7	41

Saints Six Win Sixth

WAA "A" LEAGUE
1:15 Pasadena vs. Mam'selles
2:30 No Names vs. Les Marchez
3:30 YBA vs. Saints
WAA "B" LEAGUE

3:30 Jr. Debs vs. Alphas
Bye Juniorettes, Oki Bros., Bel Shar- meers.

The all-conquering Saints launched their second round of play in the senior WAA cage league by trounc- ing the No Names, 39 to 20 in the curtain raiser at Poly gym. Scoring honor was garnered by Dot Ka- tako with 14 digits. Teammates "Sparkles" Kato and "Violent" Ta- keda scored 11 and 12, respectively.

SAINTS (39)—R. Kato 11, D. Katak 14, V. Takeda 12, R. Miyamoto 2, S. Katak, K. Kato, F. Kikuchi, A. Harada, F. Endo, K. Kato.

NO NAMES (20)—M. Shitamoto 8, T. Akemoto, S. Maeda 4, M. Higurashi 8, Y. Ozawa, L. Mitsunashi, R. Ikegami.

The YBA's registered their second triumph of the season by slaughtering the "second half" Mam'selles,

TEAMS	W L	Pct.	PF	OP
Saints	6 0	1.000	201	100
Les Marchez	4 2	.667	131	115
No Names	2 4	.333	118	153
Pasadena	2 4	.333	93	136
YBA	2 4	.333	116	124
Mam'selles	2 4	.333	107	137

20 to 6. The losers forfeited the first half, 6 to 0.

YBA (22)—M. Hata 10, F. Hamasaki 10, M. Kimoto 2, F. Hatago, M. Fukuzawa, S. Takemoto, Y. Inouye, I. Iwamura, T. Ya- namoto.

MAM'SELLES (6)—H. Hoshino, D. Kai- to, S. Ide 4, D. Shindo, H. Hirohata 2, K. Itano.

Led by the 14-point effort of Chieko Otoshi, the Les Marchez re- tained sole ownership of second place by shellacking the Pasadena

Subs: Wah Kues—K. Eng 7, W. Quon 4, F. Jung, D. Quon 2, H. Dong; Cen- taurs—M. Takahashi 8, J. Iseri, S. Nagai 4, T. Mori 1, B. Yano.

L. A. YBA found easy prey in the Gardena YBA team in the Riis third match, 56 to 31. Tak Kawa- goye came through with 13 points to lead the scoring.

(31) Gardena YBA LA YBA (56)
8 H. Kubo f T. Shimizu 5
8 J. Inouye f S. Matsumoto 10
2 T. Hide c A. Kunisaki 4
7 G. Inouye g R. Matsuno 8
5 S. Kajimoto g D. Sato 0
Subs: Gardena—K. Ohara 1; L. A.—T. Kawagoye 13, M. Miyatake, S. Inouye 11, H. Meifu 5.

SAN PEDRO GARAGE
BODY & FENDER WORK
Painting — Motor Rebuilding
MU. 1521 211-13 N. San Pedro

Mobil Meets Wah Kues
Quint in Chapman Gym

Rabid cage enthusiasts will steer their carcasses in the direction of the Riis Gymnasium where two unbeaten "AA" loop leaders are slated for a battle royal. Scheduled for first engagement in the "exaggerated phone booth" on East 69th St. is the crucial struggle between West Los Angeles and Southern Calif. Appliance. For the convenience of the residents in the Virgil district, the NAU schedule- makers have scheduled another "crucial" pitting undefeated Wah Kue against the dangerous Mobil Flying Horse at 1:30 on the Chap- man hardfloor.

Long range prognostication in January listed Mobil, SCAPs, and Wah Kue as the "money teams" of the current season with nary a mention of WLA. However, dur- ing the course of seven hectic weeks' play, Mobil absorbed two costly "upsets" in league competi- tion to find itself replaced by "longshot" Sawtelle with a clean slate.

Fans have every reason to ex- pect a "natural" in the Riis en- counter with both teams deter- mined to "give all" in that game.

SCAP followers are basing their claim for pre-game supremacy on the strength of their reserves and experienced players. They're also mighty proud of their fleet-footed dribbler Joe Maruyama of cinder fame. As a member of the Poly Hi scanty-clads last Spring, the

TEAMS	W L	Pct.	PF	OP
SC Appliance	6 0	1.000	286	184
WLA YBA	6 0	1.000	247	184
Wah Kue	6 0	1.000	231	155
Mobil	5 2	.714	284	216
Pan Pacific	4 3	.571	259	258
Nisei Trading	4 3	.571	258	219
Toyo Miyatake	3 4	.429	174	227
LA YBA	2 5	.286	244	239
Saints	1 5	.167	203	242
WSS Centaurs	1 6	.143	232	290
Gardena YBA	1 6	.143	181	264
Yahata Huskies	1 6	.143	199	313

speed merchant turned in a remark- able 10.1 century. His hawk-like defensive tactic augmented by his natural ball handling habits mark him as the most dangerous forward in the league.

Sawtelle backers point to the re- cent San Jose series to argue their choice in the WLA Buddhists. As finalists in the Soko YBL tourney, the locals eked out an overtime 46 to 43 win over the San Jose Ze- bras while a week later the SCAPs were handed a rude 49 to 42 defeat by the same Zebras in the northern lair.

Mobil might've gone all the way against WLA last Sunday had they been able to stay a little closer to the leaders in the first half. A team of Mobil's calibre will be hard to deny two weeks in a row so look for a close decision for the red- clad "gas house gang" in their "do or die" crucial with Wah Kue in the Chapman feature.

Mobil's chance for success in their game with the hell

heavily on their ability to when the Chan-lum uprising before it gets rolling. Once on the loose, the Wah Kue twosome is harder to stop than a bull on the loose in Moscow.

The "iron men" Yahata Huskies will provide oppositions for the soaring WSS Centaurs in the second tilt at Chapman. The game will feature the "battle of the guards"—Goro Sasaki of the Cen- taurs and Kish Yamate of the Hus- kies.

The final fray at Chapman will bring together two teams current- ly deadlocked for fifth place in the league standings. The PPFs have dropped three of their last four engagements after setting a ter- rific early season pace. Nisei Trad- ing outfit, on the other hand, has been picking up momentum with each week and their slaughter of the Saints last week install them as slight favorites this coming Sun- day.

L. A. YBA's speed merchants will match baskets with Toyo Miyatakes in the sandwich match at Riis. Flip a coin to pick the outcome of this even-Stephen affair.

Joseph's
MENS' WEAR
MEN'S FURNISHINGS
TUXEDO RENTALS
242 E. FIRST ST.
MA. 6-1830

FRANK'S POOL & BILLIARDS
321 1/2 E. First St.
—LADIES FREE—

Professional Directory

Physicians & Surgeons M.D.

James M. Goto,
M.D.

Masako Kusayanagi
M.D.

Kay K. Shimizu
M.D.

—GENERAL SURGERY—
Diseases of Skin and Women
X-Ray and Orthopedics
OFFICE, 241½ E. First St.
Los Angeles 12, Calif.
Res. Phone: REpublic 5778
Office Phone MICHigan 7573

Isami Sekiyama
M. D.

Kidney & Urinal System
Diseases of Women
Dermatology
(With Xray & Cystoscopy Dept.)
124 So. San Pedro Street
Los Angeles 12, Calif.
Off: MU-7882 * Res: AT-19780
(Use Dial 0)

T. Furusawa, M.D.

WOMEN'S DISEASES
Obstetrics & Surgery
Office: 332½ E. First Street
Los Angeles 12, California
Office Phone: MI. 1582

Physicians & Surgeons D.O.

Dr. Arthur A. Kawabe

on the Town

Distinguished visitors in town this week included DR. and Mrs. ISAMU TASHIRO of Chicago, who saw friends here before returning to the Windy City after a six-week vacation in Hawaii... Dr. Tashiro is active in veterans' work in Chicago, while Mrs. Tashiro is an active member of the Music Club... the couple were feted by the 442nd veterans and mayor in Hawaii.

Checking in at the Miyako Hotel from out of town were FRANK MURATO of Delano... TOM FUJIOKA of Santa Maria... GEORGE TANI from San Jose... MR. and MRS. FRANK INAMASU of Stockton... MASAO HIRO from Thousand Palms.

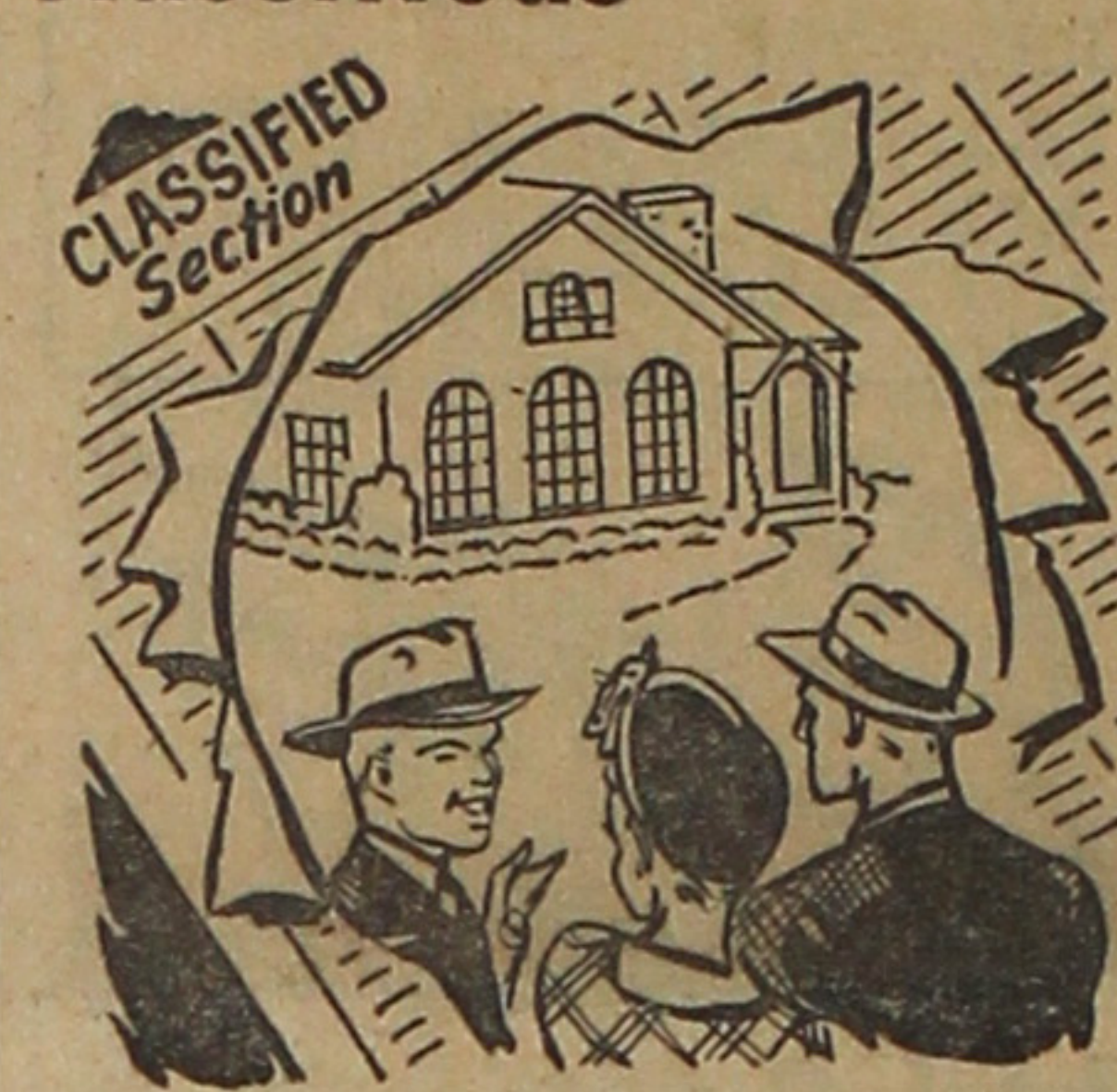
KOJI ENDO visited from Monterey... from Rocky Ford, Colo., were MR. and MRS. GEORGE YANARI and MR. and MRS. I HAMAMURA and their family... GEORGE and TOM TANIGUCHI were from Caruthers... KEN OKIMOTO from Lancaster... ISAMU TESHIMA from Delano... IWAO NISHITE from Lodi... PVT. LUTHER S. NAKAMURA from Palo Alto... MR. and MRS. AL AOKI from Honolulu, T.H....

TOSH YOSHIMURA and SHIG ISHIGAKI from Colusa... STAN OCHIAI from Fowler... KEN IMAMURA from Delano... MELVIN KAWATA was in town from Kerman... MAS OGATA from Mt. View... and DON H. NOMIYAMA from Oakland... KEN KOBARA from Arroyo Grande... HIROSHI TABATA from Clarksburg... and E. ISHINO from Wheeling, Ill.

CROSSROADS

Application for entry as Second Class Matter is pending

Classifieds



REAL ESTATE

SOUTHWEST — 4 unit flat, 4 garages, \$13,500 full price. Special buy, so hurry! WESTSIDE: 3 Bedroom frame with sleeping porch. Hardwood throughout. Side Drive. Double Garage. \$10,000 f. p. Terms. 2 HOUSES on 1 lot. 3 Bedrooms front. Large lot. \$12,000. 7 RM. HOUSE—Hardwood thruout. tile. Unit heat. \$9,150 lot. Double gar. \$10,500. Only \$3000 down. CULVER CITY, 2 Bdrms. Stucco. Enormous living room. Double sink. Tile. Fireplace. SEWERS. \$9600. \$950 Down to Gls. \$2000 Dn. to Non-vets. BOYLE HEIGHTS: 8 Rm. Stucco double. Double gar. Close to Trans. \$9500. \$3000 Down. 8 UNIT STUCCO COURT—no leases. Big lot. Close to Trans. Excellent buy at \$24,500. We have many other good buys in homes & income properties. KASHU REALTY COMPANY. Parkway 6406 RE. 2-6563

WESTSIDE—beautiful 8 year old stucco 2 bedroom, all hardwood and plenty of tile in perfect condition, must be seen. Only \$3,000 down. SILVER LAKE—3 bedroom stucco, 3 blocks from Sunset Blvd. Reduced to \$12,500, \$5,000 down. BOYLE HEIGHTS—3 bedroom frame. Hardwood & tile. Only 1 block from "P" car. Reduced to \$9,500. INCOME

following fourpoint plan of action: plus wall bed. \$10,000. \$5,000 down. SAITO REALTY AN. 9-2117

RE. 3-3385 SHELL GAS STAT'N—dep't-gas, paint shp. body & fender, 4-car gar.; reports \$3500 mo.; pumps 8000 gals mo.; price \$5000 complete; lease—10 yrs.; \$200 mo.; living quarters—2 bdrms., unfurn. included; fixtures & equip.—High pres. alemtic equip.; charger, hard seat grinder, sander, buffer, spray gun, body & fender tools, valve refacer, etc.; City Terrace loc. We will help finance. SOTO REALTY INVESTMENT Co. RI. 7-1412

10 Room stucco duplex—2 bdrms. each; both possession; \$11,500; \$3500. 2 hses. on 1 lot; Eastside; hwd. flrs.; tile kit & bath; all modern features; both possession; \$12,500; terms. 6 Room frame; 3 bdrms. hwd. and tile comp.; redecorated; Eastside; \$9,000—terms. GROCERY — and cafe combination; rent \$80; lease 1-2 yrs.; \$1000 takes all. FUJII REALTY CO. MA. 6-5355

THE RAFU CO.



IMOTO Bros.
CABINET
MAKER
Store Fixture
225-227½ No.
San Pedro St.
MI. 6817

Golden Eagle Gasoline

Complete Automotive Service
auto repairs—tire and tube—
assessories

2701 E. First St.
(Corner 1st and Mott)
Phone AN. 2-9461

HARRY'S AUTO PAINT SHOP

2922 E. 4th St.
(Corner Evergreen)

- Body & Fender Repairs
- Gas & Arc Welding

"We Guarantee All Our Work"

FOR SALE:

SPECIAL:
USED AUTO RADIOS
\$8 to \$25
61 OHV Harley-Davidson
Motorcycle
AN. 10811 Harry Hosaka, Mgr.

Certified Motor Service

2616 Jefferson Blvd.
RE. 2-8222 Open Sundays



YOUR FRIENDLY NISEI PLUMBER
SU PLUMBING & HEATING CO.
338 E. 1st St.
Su Igauye — Ed Sato
MI. 0300

SPECIAL 500

TRADE IN ALLOWANCE
NEW WILLIARD BATTERY
ENDO BROS. BRAKE SHOP
Official Station No. 2262
565 N. Virgil Ave., L. A. 4 NO. 9595

Tats Kushida

% Midwest Regional Office
189 W. Madison St. Room 1008
Chicago 2, Illinois

San Fernando Nine Nabs 10-9 Thriller

The San Fernando Aces baseball contingent eked out a close 10 to 9 verdict over the L. A. Travelers in a Winter Baseball League contest at Ross Snyder last Sunday. The Aces had to quell a last inn-

ing uprising by the Travelers to gain the victory. Going into the final canto with a five run lead, the Nisei nine was given a scare when the opponents collected a quartet of runs on a grand slam homer.

Leading the stickwork for the winners were Ben Yoshiwara, George Sugawara, Sat Mitsui, and George Tamura. Yoshiwara hit a triple and a homer while Tamura connected with a round-tripper besides two bingles. Sugawara and Mitsui bagged three safeties each.

Sports

Church Casaba League to Start

Under the sponsorship of the U.C.C. of Ministerial Board, the inter-church basketball league will start next Monday evening at the East Los Angeles YMCA gymnasium with all six teams seeing action, according to George M. Nishinaka, district program secretary. The five week program will be conducted each Monday night with three games to be played commencing at 6:00 p.m.

The six teams entered in the league are as follows: Hollywood Independent, Centenary Methodist Church, Baptist Bears Ayes, Baptist Bears Bees, All Peoples Knights, and All Peoples C.Y.F.

Kaz Saito, Sam Takagishi, Jack Nagano, Paul Nagano, and Kim Nagano will serve as officials.

Games February 28 —

NAU Bee Results

NAU "B" LEAGUE

1:00 Rogues vs. Su Plumbers
2:00 Nuggets vs. Esquire I
3:00 Wombats vs. WLA Knights
4:00 Evergreen Bees vs. Dauphins
Bye Esquire II

EVERGREEN BEES (29)—C. Takizawa 7, T. Kowta 5, R. Kono 2, G. Ishii 11, J. Shoji 4, J. Hayashi, B. Higashi, H. Uye-hara.

WLA KNIGHTS (24)—Nishimoto, Y. Uemura 4, A. Kishi, G. Kiriama 6, G. Toya 4, B. Kame 4, J. Iwanaga 2, C. Sugawara 4, T. Ishioka.

ESQUIRE NO. 2 (29)—G. Sasaki 3, H. Inao 4, D. Matsubara 7, E. Akiyama 4, T. Umekubo 6, D. Fujimoto, E. Minami 1, J. Kitayama 4.

ESQUIRE NO. 1 (41)—Y. Takehara 2, K. Shimizu 13, B. Tsuchiyama 2, R. Tamaki 2, D. Sasaki 6, J. Nozaki, C. Hisamune 8, K. Mochizuki 6, T. Kunitomi 2.

WOMBAT (32)—Y. Arima 8, A. Miyashima 2, R. Shimahara, R. Mikami, H. Sansui, Y. Suwa, W. Hisamune, C. Miura 2, S. Arita, P. Kato 10, T. Kunitomi 2, Y. Hirata 2, T. Hirata 2, K. Oshio 4.

DAUPHINS (35)—T. Takeuchi 11, J. Nagafuchi 9, J. Yakura 4, T. Terada 4, F. Yamamoto 7, K. Kato.

SU PLUMBERS (44)—S. Ogawa 12, H. Watanabe 14, K. Watanabe 4, T. Watanabe 4.

force any longer successfully.

8:00 - A. P. Knights vs. Baptist Bees

Judo Kyokai Election

Los Angeles Judo Kyokai's annual dinner-election will be held on Saturday, March 5, at Kow Nan Low beginning at 6:30, it was announced by Kiro Nagano, president. All members are requested to contact Kiro for further information.

FUJII REALTY CO.

Real Estate, Business Opportunities

Insurance Notary Public

312 E. First St. Taul Bldg. 201 Los Angeles 12, Calif.
Madison 6-5355

RAMON V. VIDELA

PAINTING CONTRACTOR

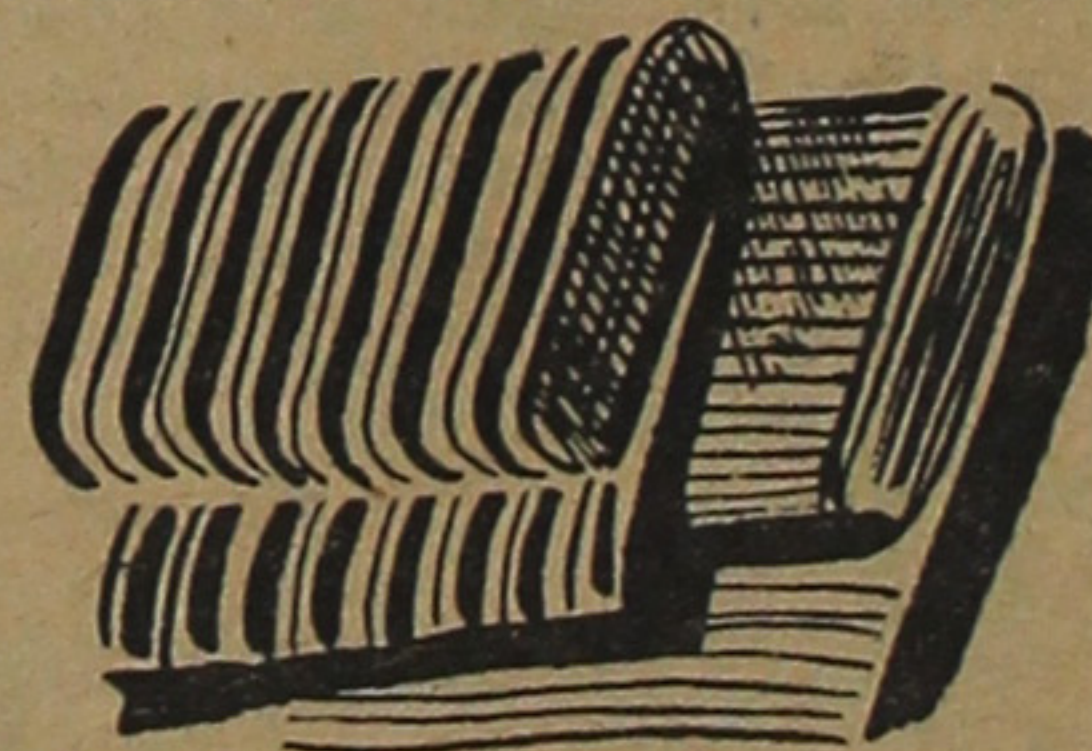
358 East First Street Los Angeles 12, Calif.

INTERIOR AND EXTERIOR

Residential and Commercial Painting

FULLY INSURED

MA. 9-2826 That's the number to call for prompt service



Your favorite
store for
quality
merchandise

WOOLENS - COTTONS - RAYONS to clothe the entire family

A Most Practical Gift for Overseas Parcels
SAMPLES FURNISHED UPON REQUEST

LB WOOLEN AND TRIMMING CO

IN LONG BEACH 245 5th Street
IN SAN DIEGO 935 6th Avenue
CRENSHAW DIST. 3945 Crenshaw Blvd.
530 SOUTH LOS ANGELES ST., L. A. 13

Dr. Kiyoto Kawabe
846 E. 21st St.
RL 5761

Dr. Sue A. Magara
Southwestern Industrial Hospital
4075 Tweedy Blvd., Southgate
LOgan 5-6424 Res. AN. 2-0462

Dr. T. Miyamoto
3607 S. Normandie
PA. 8817 Res.: AX. 1-9440

Dr. Wallace T. Nagata
2704 W. Jefferson
RE. 5488 Res: RO. 9278

Dr. Charles M. Usui
1013 S. Catalina
FL 9467

DENTISTS

Dr. M. M. Nakadate
DENTAL MEDICINE
AND
NUTRITION
Suite 310
112 N. San Pedro VA. 1592

Optometrists

John Y. Koyama
O.D.

Optometrist — Optician
REpublic 2-5771
L. A. Office: 2104 W. Jefferson
W.L.A. Office: 2051 Sawtelle

Dr. Kenzo Sugino
Optometrist

MU. 7419 122 S. San Pedro St.
Res. AN 2-2831 Los Angeles 12

DR. HIDEO UBA

Optometrist
ROOM 207 312 E. First St.
Michigan 1655