

# TOPAZ TIMES

T R I — W E E K L Y

Vol. IV No. 9

TOPAZ, UTAH

Thursday, July 22, 1943

## MISS RHOADS TO ORGANIZE HOSTEL DEPT.

A special department to handle hostel applications will be established within a few days as a part of the relocation office, according to Miss Esther Rhoads from the southern California branch of the American Friends Service Committee, who is visiting the center to confer with administrative officials.

Direct contact will be maintained between the new department and Friends' hostel in Chicago, which has connections with hostels of other cities offered by various religious groups.

In addition to offering hospitality at a low cost, the hostels function to assist relocators in finding jobs and permanent housing and attempt to teach good assimilation techniques.

Miss Rhoads stated that persons who have relocated through hostel channels have in almost all cases been successful in their resettlement program. Approximately 1000 relocators have been assisted by the Friends and Brethren's hostels in Chicago and an additional 100 through the Cincinnati hostel.

Miss Rhoads, who will be in Topaz until Saturday, is scheduled to speak at the relocation forum on the work of the hostels from 8 PM tonight at dining hall 32.

## Postponed

The community-wide singfest, scheduled for tonight at the high school plaza, has been postponed due to uncertain weather, it was reported.

WEATHER	Max.	Min.
Tuesday.....	92°	65°
Wednesday.....	88°	64°
Thursday.....	--	51°

## NEW OFFICE ESTABLISHED HERE FOR SEGREGATES

That a special segregation office has been created in the project to answer questions involving change of answers on the loyalty question, and those on repatriation, was revealed today by Project Director Charles F. Ernst. He pointed out that every opportunity will be

## FOUR TO ATTEND DENVER MEETING

Director Charles F. Ernst will leave Saturday morning to attend a conference of project heads in Denver on July 26-27. The main discussions will be concentrated on the segregation problem.

He will be accompanied by Reports Officer Russell A. Bankson and Project Attorney Ralph C. Barnhart, who will attend conferences with men of their respective divisions from other centers, which follow the meeting of project heads.

The group will be joined in Denver by Lorne W. Bell, assistant project director, who has been in the East for the past week.

## RESIDENTS MAY SELL VEHICLES

Vehicles of all types which the residents may wish to sell will be purchased by LeGrande Belnap of the Salt Lake-Delta Freight Lines.

Belnap is especially interested in large trucks, tractors, and trailers which may be used to haul freight. Interested persons should contact the evacuee property office.

## FOOD RATIONING POLICY CHANGES

The OPA office in Denver has advised the ration office here to discontinue the issuing of food ration certificates to persons leaving the center on short term leaves, according to Miss A. Altvater.

Indefinite and seasonal leave relocators will receive food ration books.

given the residents to learn about segregation developments and procedures at the office, which will open Monday at rec 4.

## JULY 1 DEADLINE

Applications for cancellation of repatriation, which were filed before July 1, instead of June 1 as first indicated, will be recognized, it was determined. Moreover, hearings will be given to all who applied by July 15 to alter negative answers on the loyalty question.

## NEW APPOINTMENT

George Lafabregue, head of the community welfare section, has been appointed executive officer in charge of the segregation program here, it was announced today.

His working staff will be supervised by Miss Eleanor Gerard, vice-principal of the high school.

Although it is anticipated that 8% of the present Topaz population will be reclassified, preparations are being made to bring into the center twice the number that will leave for the segregation center.

## TULE LAKE CHOSEN

It is understood here that Tule Lake has been designated as the segregation center, inasmuch as it is among the most self-sustaining of the ten projects and has the largest number of segregates.

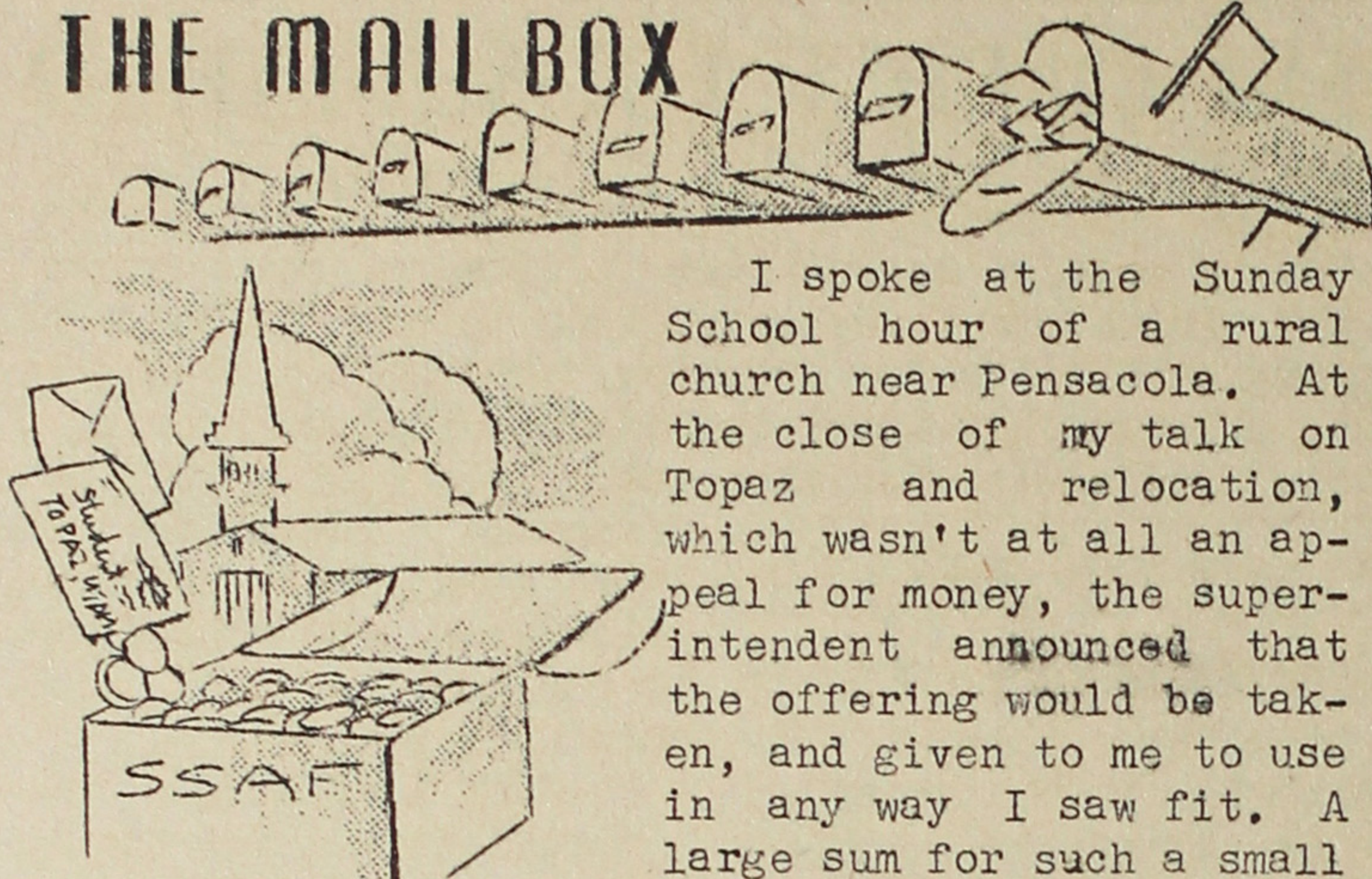
Present WRA policies governing all center activities, with respect to food, clothing, education, evacuee property, and other operations will also be maintained at the special center.



# TOPAZ TIMES

Published Tuesdays, Thursdays, and Saturdays  
at the Central Utah Relocation Center

## THE MAIL BOX



I spoke at the Sunday School hour of a rural church near Pensacola. At the close of my talk on Topaz and relocation, which wasn't at all an appeal for money, the superintendent announced that the offering would be taken, and given to me to use in any way I saw fit. A large sum for such a small group, \$20, was turned over to me. And I can think of no better way to use it than to give it to our scholarship fund. So I'm enclosing a money order for \$20, the gift of the Pine Forest Methodist Sunday School of Escambia County, Florida.

I hope that the fund has gone over the mark set, and I hope other groups to whom I am to speak will be equally generous--so that I can send more later!

Mary McMillan

(Editor's note: Miss McMillan, who is vacationing at her Florida home this summer, is an instructor at the Topaz high school.)

The majority of the nisei are staying at the YMCA hotel, a spot Toku Okubo and I avoid as much as possible. Those Japanese that we do see are not too conspicuous though.

The wages here are quite low, but once you get a job and settle down, it seems you can save a little so long as you do not spend foolishly. We have found the parks a possibility of inexpensive recreation, and we've already planned many trips for the Field Museum.

Tomorrow Toku and I will have personal interviews on the job offers he has. We feel confident that we'll be working by the end of the week.

Nobu Kitagaki  
Chicago, Illinois

Over a month has elapsed since my arrival in Camp Shelby. The extremely hot weather, no friends and the difference in my age from the others made it difficult for me to adjust to the routine of a soldier at first. But now I am happy to say that my morale has changed for the better now. One falls into the schedule somehow, and picks up friendships in the course of time.

My wife has been swell and courageous in her letters. I miss her and my baby, but I feel just as strongly that this act of mine is the making of our future happiness and security.

Yoshiaki Moriwaki, Pvt.  
Camp Shelby, Mississippi

## DESERT Echoes

I'M WRITING THIS....

because I have just returned from my third visit to the farm and discovered that there are approximately 16 miles of riding just to see the cattle, turkeys, and chickens--by adding up the previous mileages it took to cover the truck crops, hay fields, and swine plants, I have come to the interesting conclusion that I have traveled close to 40 miles to see the entire project farm in operation.

IF I OWNED A BUS....

I'd take all the residents through the farming areas and point out the various programs now being carried on by the agricultural section; namely, the haying of alfalfa, tending of 200 cattle, weeding of the onion patches, raising of turkeys and chickens, building of the modern swine plant, and hundreds of other functions that the people are not aware of.

A SIGHT TO SEE IS....

a nisei cowboy...the future Thanksgiving and Christmas turkeys crowding and jostling each other to get to the feed first...high school kids working in a joyous mood on the farm...a soulful looking steer that reminds you of someone...green grass and trees which bring back memories of sunny California.

DID YOU KNOW THAT....

the poultry section is planning to erect 24 adobe buildings to house thousands of laying chickens in the near future...the adobe bricks are being made from our own clay by the poultry workers...each coop will take 3 or 4 weeks time to complete.

ORCHIDS TO....

S. Sekiguchi and his crew for the continual improvements in the swine plant.

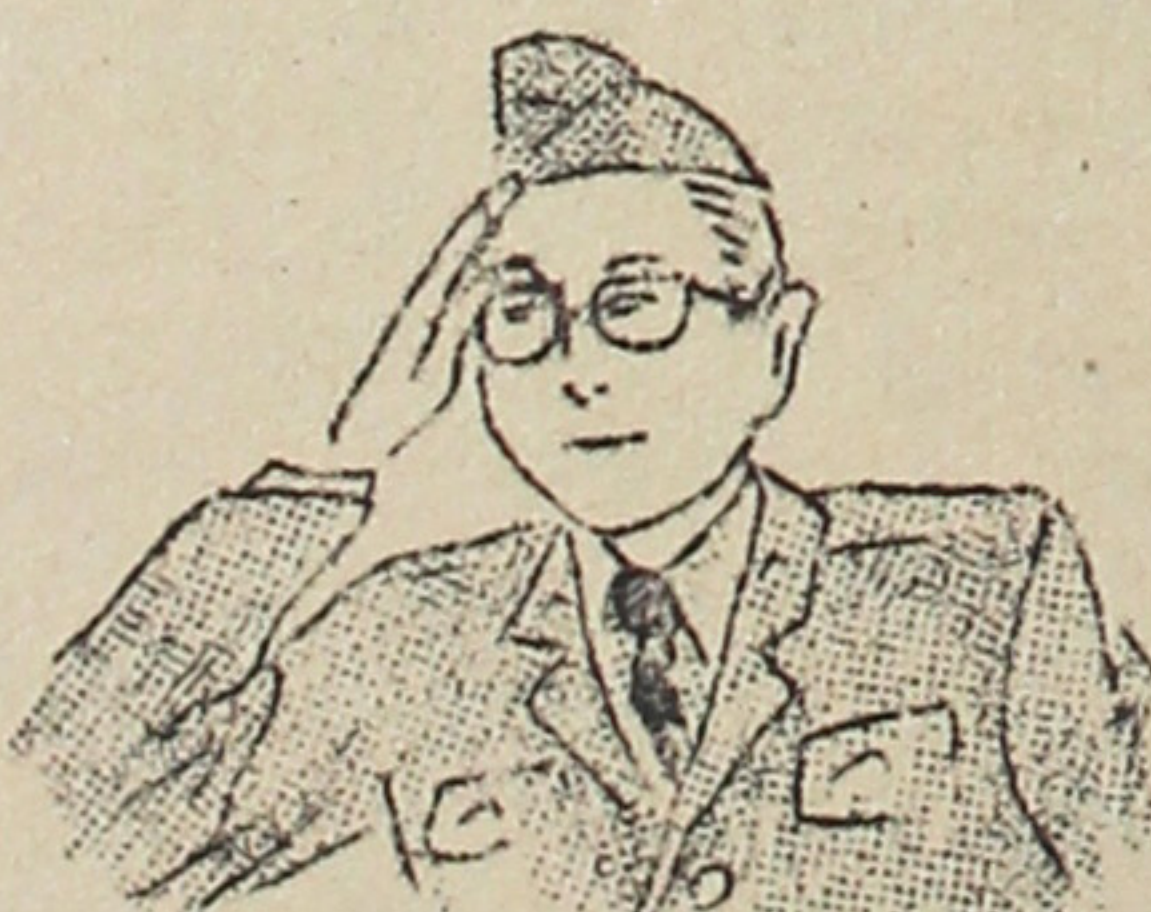
R. Yamane and the turkey section for the neatness and cleanliness they maintain.

K. Shikano and the cattle division for their excellent care of the finest-looking heifers and steers in this state.

All the farm workers who are doing their best for the welfare of the residents.

And to the block managers for assuming the responsibility of getting volunteers to aid in the ag program.

Kiyoshi Kimoto





## RELOCATION 90 FAMILIES RESETTLED

Statistics compiled by the family bureau of the relocation office indicate that 90 families, involving 297 persons, have relocated to date. Of this total 37 families have resettled in Utah to engage, for the major part, in agriculture.

Illinois received 12 families; Ohio, 9; Colorado, 7; Michigan, 6; and Idaho, 5. The remainder scattered in Missouri, Nevada, Minnesota and Wyoming.

The analysis shows that 38 families were couples of which 20 were young people. Forty-six were comprised from 3 to 5 persons.

There were 3 families with 8, 9, and 10 persons, respectively, relocating for farm work.

## DRAFTING CLASS TAUGHT AT P.W.

Sponsored by the adult education department, the college accredited course in mechanical drawing is meeting every Tuesday and Thursday evenings from 6:30 to 9 o'clock, it was revealed today.

The classes are being held in the drafting rooms of the public works division with Shinji Yamamoto as instructor.

Interested students are still being accepted, it was stressed. Except for the textbooks, all other equipment will be provided.

## ALFALFA HAYING APPROACHES END

Under the supervision of Kaz Shikano of the cattle section, trainees supplied by Alden S. Adams, vocational agriculture instructor, are completing the haying of alfalfa, said William Farrell, acting chief of agriculture.

The inexperienced workers are becoming proficient in the handling of complicated machinery and work is being expedited, Farrell reported.

## 200 STUDENTS REGISTER FOR JAPANESE CLASSES

Over 200 students mobbed the registrars for the Japanese language classes which commenced studies this week. All three levels, elementary, intermediate and advanced, were divided into two groups in order to accommodate those who registered.

## TRAIN MEAL PRICES SET

Evacuees on travel status will be able to purchase three dining car meals daily with their \$3 daily travel allowance, as a results of a program of economy meals on trains, announced the OPA today

Standard types of breakfast are now served on all trains, (except on a few exempt all-Pullman trains) at a ceiling of 85¢, luncheon at \$1, and dinner at \$1.10. This action is part of the plan to freeze all prices of food served on railroad dining cars at the highest prices charged during the period February 1 to April 10, and has been agreed upon by all railroad representatives.

Also brought under control by the program are prices of food and beverages sold by peddlers on moving trains. The ceiling for peddler sales of coffee, milk and soft drinks is 10¢. A dime will buy a slice of pie, 2 doughnuts, cup cakes, ice cream, potato chips, or a candy bar. Most sandwiches are sold at 15¢.

WRA Release

## VIGIL SAVES SICK CHICKS

The efforts of a harassed "Dr." Rikiemon Yamane, 38-6-E, resulted in the survival of hundreds of chickens, which were stricken with bronchitis this week. Nursing them for 3 days and nights, Yamane's vigil was rewarded by the loss of only one hen.

Yamane, who is 67 years old, was for 30 years in the poultry business in Hayward, California, prior to evacuation.

The purpose of these classes is to extend the vocational scope of the language students, and there is no obligation of serving the government, it was emphasized.

The text being used is "Elementary Japanese for University Students", revised 1942 from the Harvard University Press.

A fee of 25¢ per student is being collected to defray expenses of reference books and teaching material.

The classes will be conducted for a semester of 6 months, meeting three evenings weekly, according to S. Aoki, supervisor.

## Cattle Unit To Supply Beef

To assure sufficient beef supply in the dining halls, between 25 to 30 head of cattle will be slaughtered in the near future, it was disclosed today by William Farrell, acting head of the agricultural division.

The cattle section is planning to increase the present herd of 200 to 800 this fall. The cattle to be purchased will be of the three weight grade, 400 to 750 pounds per head.

At present the cattlemen are working out plans for the rotation of pastures to insure continuous feed for the increasing herd.

## NUPTIALS UNITE YAMADA, SAKAI

Solemnized at the Topaz Protestant Church last Sunday evening was the marriage of Miss Chiye Yamada, formerly of Oakland, and Tamotsu Sakai of San Francisco. The Rev. I. Tanaka officiated at the ceremony.

The new Mr. and Mrs. Sakai are honeymooning in Denver, Colorado, this week, it was learned.



## BUDDHISTS SLATE OBON FESTIVAL FOR AUG. 14-15

Plans for an elaborate Obon festival were outlined at a special meeting of the affiliated organizations of the Tohaz Buddhist Church early this week at rec 28, Masuji Fujii, board of directors chairman, said today.

The 2-day fete has been set for August 14-15 and will feature services and the customary Bon odori.

General chairman for the celebration will be Matsuzo Kurokawa. He will be assisted by the officers of the Seijin board, Fujin-kai, Sunday school, YBA and Junior YBA.

Practice for the Japanese folk dances will begin Saturday night at rec 28 from 7:30 PM. All Buddhists are urged to turn out for the "Festival of Lanterns" odori.

Odori leaders will include June Nakayama, Masako Neishi, Grace Fujimoto, and Fumi and Masako Hanyu. Toshio Yoshida, Yosh Isono, Sachi Tajima, and Hara Sakaki will handle the general arrangements.

## 600 ATTEND THEATER PARTY

Over 600 participants in the 4th of July carnival were treated to a movie party on Monday and Wednesday nights at dining hall 32 by the festival committee, according to Mas Nakamoto, who was in charge of arrangements.

Half of the carnival committee attended the Monday night showing of the "The Hound of the Baskervilles", while another group attended last night's presentation. Fred Koba thanked those present for their efforts in making the carnival a success.

## SUMMER SEWING CLASSES OPEN

Under the sponsorship of the local high school's home economics department, a class in tailoring and pattern drafting is being conducted during the summer period by M. Kusunoki.

The class meets Mondays through Fridays at 32-11-CD from 8 to 10 AM. All girls of high school age or over are invited to attend.

## SPECIAL EVENTS TO BE REGISTERED BEFORE HAND

All private, club, and block groups are requested to register the dates and locales of their parties or socials one week in advance with Amy Morizono at rec 3, the CES special events department said today.

To avoid the scheduling of parties and community wide events on conflicting dates, groups planning such activities should contact the special events department beforehand.

## SSAF TO MEET WITH PARENTS

Parents and guardians of the recent high school graduates, who have applied for scholarship aid, will meet with the SSAF committee this Saturday at rec 23 from 2:30 PM.

June Morita, counselor, will explain the functions of the National Student Relocation Council. The purpose and activities of the Student Scholarship Aid Fund committee will be told by Sasato Yamate, chairman. A question and answer period will follow.

## LIBRARY NOTES

**NEWSBIT:** Ida Shimanouchi, former head librarian of the community library, now on the Smith College library staff, is back in the project for a brief stay. She is assisting both the public library and Japanese language section.

**BOOK REVIEW:** IN ONE WORLD, Wendell L. Willkie presents an interesting report of his unusual 49-day trip around the world. It is a highly personalized account of his meetings with the leaders of the U-

## SUMMER CAMP

## REC 10 GIRLS TO GO SUNDAY

Starting this Sunday, Camp Antelope will become a vacation haven for local girls' groups for a period of 3 weeks, it was announced by Miss Toshi Koba, CES group activities head.

The initial contingent of 60 girls will depart this Sunday for the mountain camp. Included in the group will be the Alpha Debs and Junior Jinxes of rec 10.

Accompanying the campers will be the following counselors, headed by Miss Koba: Mrs. Michi Hashiguchi, and Misses Mary Kato, Nuiko Haramaki, Hisako Nonaka, Margaret Kitashima, Margaret Wakayama, May Kishii, and Atsuko Tate.

## FORUM FEATURES HIROTA, NAKASO

The relocation forum tonight will feature Tad Hirota, YBA leader, and Miss Katherine Nakaso, a delegate to the Estes Park conference, as speakers. The weekly meeting will be held at dining hall 32, from 8 PM with Miss Harumi Kawahara as moderator.

## ISSEI SING FEST SET FOR TONIGHT

A community-wide sing-fest for the issei and kibe will be held at the high school plaza stage from 8 PM tonight. The event will be emceed by Hisao Hoshino.

nited Nations. It is one of the most outspoken books ever written by a great figure.

**NEW TITLES:** U.S. FOREIGN POLICY by Walter Lippman, THE FOREST AND THE FORT by Hervey Allen, TOMORROW WILL COME by E. M. Almedingen, JAPAN'S MILITARY MASTERS by Hillis Lory, MOTHER FINDS A BODY by Gypsy Rose Lee, SPORTING BLOOD and THERE WAS AN OLD WOMAN by Ellery Queen, THE HANGMAN'S HANDYMAN by Jake Talbot, FUN WITH CARDS by Dean Bryden.



## BLK. STANDINGS AS RECORDED

(Sports editor's note: Due to fact that several games have been unreported, the standings are based solely on scoresheets turned into CES.)

### WESTERN A LEAGUE

Team	W	L	Pct.
3	4	0	1.000
31	2	0	1.000
1	2	1	.667
9	1	2	.333
16	0	0	.000
22	0	3	.000
8	0	3	.000

#### Sunday Results

22-1 game unreported  
16, 3; 3, 3.  
9-31 game unreported  
8 bye

### EASTERN A LEAGUE

5	3	0	1.000
Kibei	3	1	.750
13	2	1	.667
7	2	2	.500
20	1	1	.500
6	1	3	.250
11	1	4	.200

#### Sunday Results

Kibei-13 game unreported.  
20 forfeits to 11.  
5-26 game postponed.  
7, 10; 6, 6.

### NORTHERN A LEAGUE

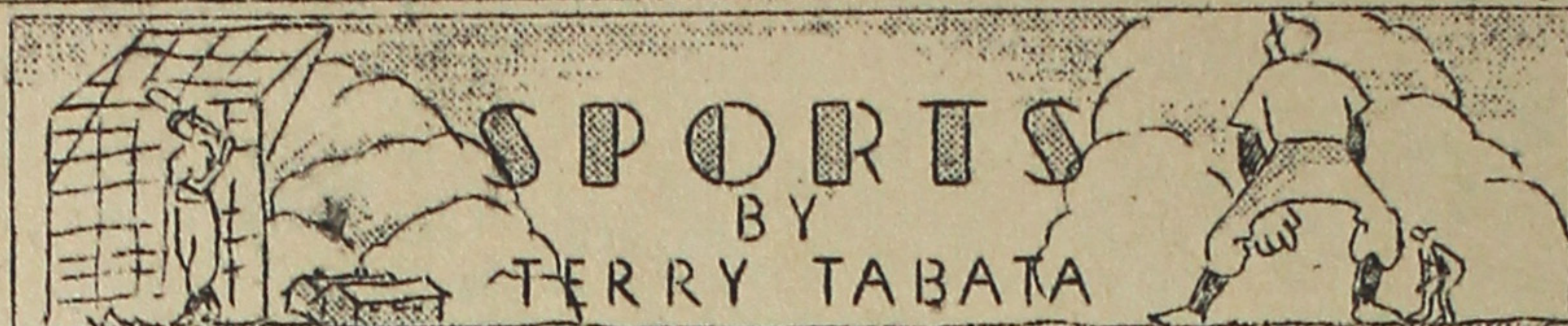
37	4	0	1.000
38	3	1	.750
29	2	1	.667
39	2	3	.400
33	1	2	.333
31	0	3	.000
27b	0	2	.000

#### Sunday Results

37-33 game unreported.  
31, 9; 39, 19.  
29-38 game unreported.  
27b bye

### SOUTHERN A LEAGUE

42*	5	0	1.000
-----	---	---	-------



## 30AA TOPPLES 16AA, 7-4 IN FIRST PENNANT GAME

Highlighted by Aki Asai's homer in the 6th, 30AA, the American circuit's 2nd round leaders, overcame 16AA, the 1st round champs, 7-4, Tuesday.

Before a meager crowd, the Thirtymen began their scoring spree in the 1st when, with the bags full, Kaz Kariya doubled to tally Tommy Nitta and George Masuda from 2nd and 3rd.

In the 2nd frame, 30 again tallied when Shami Nakao scored on Nobe Kobayashi's bunt. Yosh Ishida followed Nakao on Hideo Yonenaka's ground out.

Thereafter, the victors scored 3 times in the 3rd, 5th, and 6th innings.

16's only surge for dominance came in the 2nd when they crossed home plate thrice. Hiss Kataoka scored first on Minor Ikeda's connection. Jimmy Honda and Ikeda trailed Kataoka on Paul Takata's double.

41*	3	2	.600
27a*	1	1	.500
34	0	2	.000
40	0	2	.000
35	0	2	.000

\*Schedule complete due to 28's withdrawal.

#### Sunday Results

40-34 game unreported  
35 bye

## 37A DUMPS CO-LEADING 29A

Blk. 29, league leaders of the Northern loop's 1st round and co-leader of the 2nd round, finally was downed by Blk. 37, 12-4, last Sunday.

The conquering 37 team, already ahead, 7-4, in the 6th stanza, completed its route by scoring 5 times on an error, a hit, and 2 walks, in the last inning.

## HOW THEY HIT

Player	AB	H	Pct.
Kataoka, H.	3	2	.667
Ogawa, H.	6	3	.500
Kataoka, B.	8	3	.375
Takahashi, M.	7	2	.286
Asai, J.	7	2	.286
Sato, H.	5	1	.200
Furusho, T.	5	1	.200
Honda, J.	6	1	.167
Iida, T.	1	0	.000
Yamashiro, F.	2	0	.000
Adachi, E.	3	0	.000
Akinaga, Y.	4	0	.000
Totals.....	57	15	.263

### INDUSTRIAL AA ALL-STARs

Yano, G.	3	2	.667
Ide, N.	4	2	.500
Utsumi, E.	6	3	.500
Kitamura, Ken	5	2	.400
Kariya, K.	3	1	.333
Hashiguchi, N.	3	1	.333
Sekigahama, F.	7	2	.286
Ishiyama, T.	7	2	.286
Kaneko, R.	4	1	.250
Yasuhiro, S.	5	1	.200
Akagaki, M.	6	1	.167
Nakaso, J.	1	0	.000
Suyehiro, J.	1	0	.000
Nakagawara, H.	3	0	.000
Kitamura, K.	4	0	.000
Ota, S.	2	0	.000
Totals.....	64	18	.281

## PROBABLE LINEUPS OF NAT'L LEAGUE PENNANT TEAMS

### BLOCK 12AA

Isono, Yosh  
Nakaso, Jiro  
Tokunaga, Linc  
Inouye, Tak  
Nakaso, Sambo  
Nakamoto, Mas  
Isono, Sam  
Nakamura, Ike  
Ishida, Min  
Ura, Frank

### POSITION

Pitcher  
Catcher  
1st Base  
2nd Base  
3rd Base  
Shortstop  
Leftfield  
Centerfield  
Rightfield  
Buckshort

### BLOCK 20AA

Ota, Sus  
Iida, Ted  
Kitamura, Ken  
Kawano, Chuck  
Harano, Roy  
Towata, Cy  
Kitamura, Kozo  
Nao, Makoto  
Sato, Eiichi  
Nobe, Ken

12AA record for 2nd round:

12, 22; 39, 7.  
12, 1; 19, 10.  
12-11 game unreported  
12, 3; 20, 4.  
12 wins; forfeit by 26.

20AA record for 2nd round:

20, 8; 11, 7.  
20, 43; 39, 4.  
20 wins; forfeit by 26.  
20, 4; 12, 3.  
20 wins; forfeit by 19.

The championship tilts between the 2 teams will be played Fri., Sat., and Sun. at 6:30 PM on diamond 21.

## BASEBALL MEET THIS FRIDAY

All block baseball representatives are urged to attend a VERY important baseball meeting tomorrow night, 9 PM, at dining hall 16, it was announced by the baseball committee.



# ト パ ズ 新 聞

## 米友援助委員会からの書簡

「前略」 日本人諸君の太平洋沿岸撤退から轉住或は抑留事件に關聯した凡ての歴史的事實及び文藝的材料の完全なる蒐集を爲すべく目下私共が微力を傾注してある事御知らせ申上げますれば、おそれなく諸君方にも幾分の興味を以てお聞きなされんかと存じます。尤も是等事實の記録は將來に於て米國歴史の参考資料として役立つはしないかと思ふれます。

スタンフォード大學の「平和戦争革命」に關する圖書館は今度の吾等の仕事に深く関する興味を持ち、其の完成後はそれを引き受ける事になつて居ります。

吾等は「A」の書籍所題「ヤリ・ラス・カンド」及び其他のハンドブックを参考として既に可なり完全に近い書籍の編纂を作り上げてあります。が尚ほ此上にも諸君方始め他の友人諸君が上述の如き吾等の資料蒐集に何分協力し御援助を賜はらば幸甚の至りに存じます。若し又私共が何か諸君方の御爲めに成し得ることなかりましたら何なりとも御遠慮なく仰せ附け下さいませ。

尚ほ當地に於きまして目下各地の轉住所に居る日本人諸君の將來に必からぬ關心を持って居る者が多數居る事を御承知なされたいのであります。

- ① AM. FRIENDS SERVICE MESSAGE ② AGRICULTURE  
③ GARDEN CAMP  
④ SCIENCE MUSEUM  
⑤ SCHOLARSHIP FUND  
⑥ REAL BOUQUET  
⑦ BASE BALL CONFERENCE  
⑧ FIRST AID  
⑨ TEA PARTY  
⑩ CURRENT EVENTS

米友援助委員会代表  
ヘンリー・W・メーヤー

## 作物に救いの手

愈々今水曜日よりセントラル・アイランドの人手が、各野菜の難草退治に如くなる。季節が稍々遅れ、プランツ自らも成長を急ぐのであるが、何分にも難草の跋扈により、無惨にも八方より押寄せられた形であつた。之れが難草の排除と共に彼等は日の光りを浴び勢ひよく伸びゆくことが出来るであらう。由來作物は植物に相違ないが、人工により人間の食料に都合のよいように造られたもの、随て嬌悍なる野生植物の敵ではない。私達等はセントラル・アイランドの誠意が作物に通じ、其効力が最も効果的に現はれんことを切に望むのである。

## オグデン・キャンプ 設備改善する

所長代理ゼームス・F・フュース氏の報告に依ると前通當所から七十五名の高校女學生が働きに行ったオグデンのキャンプ諸設備の状況は當監理員が再々検査を行つた結果可なり改良され、居るとの事である。又フー氏の依頼に應じて同行したる當所の執事ブランドン・ソンの談によれば同キャンプの台所の諸道具其他衛生施設等は今週中に設置される見込みである。

## 奨學基金金助贈

一躍三千の八十弗九十九仙に達したと、委員長山手哲人氏はホクホクもので表謝して居らる。

先週の寄附者如左。  
金一千六百九十一円廿二仙

一、五十円 佛教會  
一、二十円 佛敎會  
一、十円 佛敎會

一、十円 佛敎會  
一、十円 佛敎會  
一、十円 佛敎會

一、十円 佛敎會  
一、十円 佛敎會  
一、十円 佛敎會

一、十円 佛敎會  
一、十円 佛敎會  
一、十円 佛敎會

一、十円 佛敎會  
一、十円 佛敎會  
一、十円 佛敎會

## 眞物の花束

喜を齎す

去る土曜日に造園課より入院患者一人に贈られたるほんとの「パール」の花束は非常に喜ばれた。ある人々はそれが造花でないことを信じて得ないで、懐かしう葉を撫でて見た。これ等の「パール」は造園課の「パール」及「高木氏」監督の下に「パール」で培養せられたものである。

## 慰勞茶話會

去る七月廿二日に亘る「パール」の景色々々とお話下さる。此の會場係の皆様が生徒一同に對し、御礼申し上げます。就きまして来る廿四日午後七時より第廿食堂に於て親睦を計るため茶話會を開催します。皆様御出席下さる様お願い致します。

橋本夫人。

## 成人教育部講演

場所：第四食堂  
時間：金曜日午後七時半  
◎榮養原理と健康法  
◎米國事情、山手哲人氏  
若し時間あれば山手氏の憲法論

## 理科博物館計畫

夏期初等科課程の一部



①

る夜更しもやゐが体腫

へられた

③ の便がある。

中内との連絡にはバス電車

雪真珠の山で花を

⑦

自重法乙女

ハミヤ州ヲヲミハミヤ

- 1.
- 2
- 3
- 4
- 5
- 6
- 7

This image shows a blank, aged, cream-colored page, likely an endpaper or flyleaf of a book. The paper has a slightly textured appearance with some minor creases and discoloration, characteristic of old paper. The left edge of the page is bound, and the overall tone is a warm, off-white or light beige.

1



