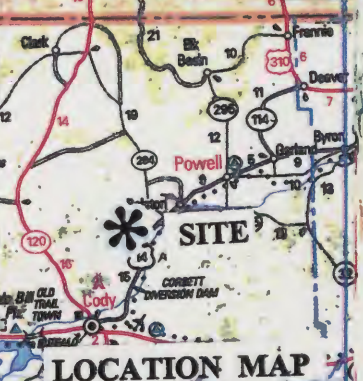


TYPICAL BLOCK

	45	35	25	15
F	28	29	30	
G	27	OPEN SPACE	25	24
H	20	21	22	23
E	17	HIGH SCHOOL	15	
D	12		14	
C	9	8	PARTIAL 7	
B	5	6		
A	2	1		

NUMBERING OF THE BLOCKS

4000 FT.

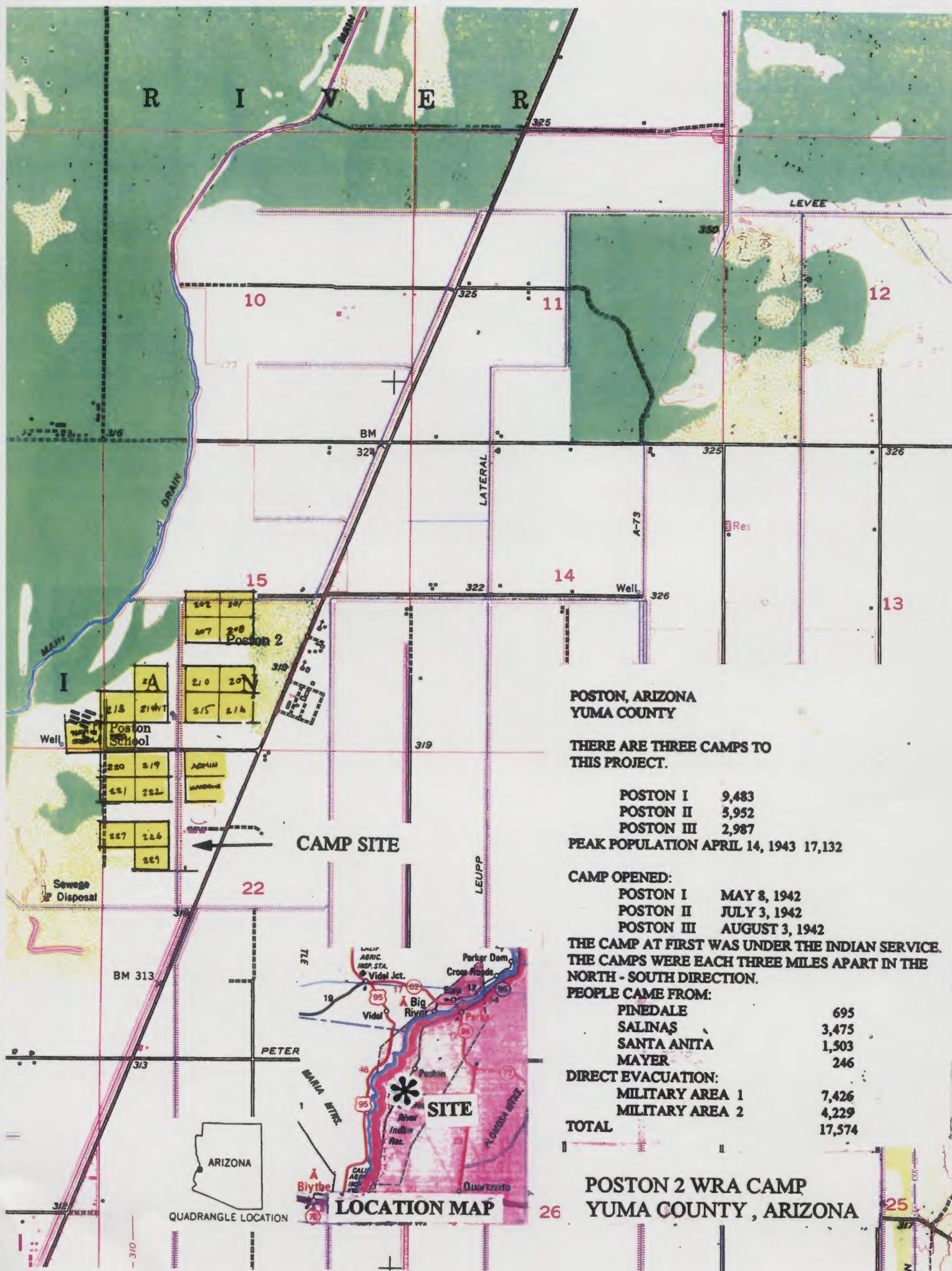


LOCATION MAP

HEART MOUNTAIN WRA RELOCATION CENTER

PROJECT AREA 46,205 ACRES
 CAMP SITE 1,574 ACRES
 POPULATION 10,849
 OPENED SEPTEMBER 11, 1942
 CLOSED NOVEMBER 10, 1945

HEART MOUNTAIN WRA RELOCATION CAMP
 PARK COUNTY HEART MOUNTAIN, WYOMING



**POSTON, ARIZONA
YUMA COUNTY**

**THERE ARE THREE CAMPS TO
THIS PROJECT.**

POSTON I	9,483
POSTON II	5,952
POSTON III	2,987
PEAK POPULATION APRIL 14, 1943	17,132

CAMP OPENED:

POSTON I	MAY 8, 1942
POSTON II	JULY 3, 1942
POSTON III	AUGUST 3, 1942

**THE CAMP AT FIRST WAS UNDER THE INDIAN SERVICE.
THE CAMPS WERE EACH THREE MILES APART IN THE
NORTH - SOUTH DIRECTION.**

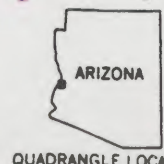
PEOPLE CAME FROM:

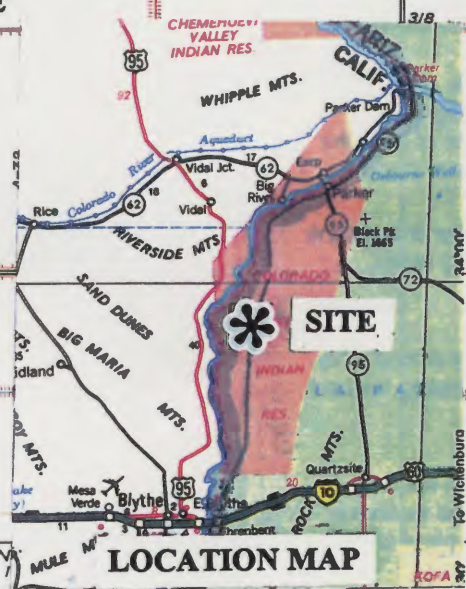
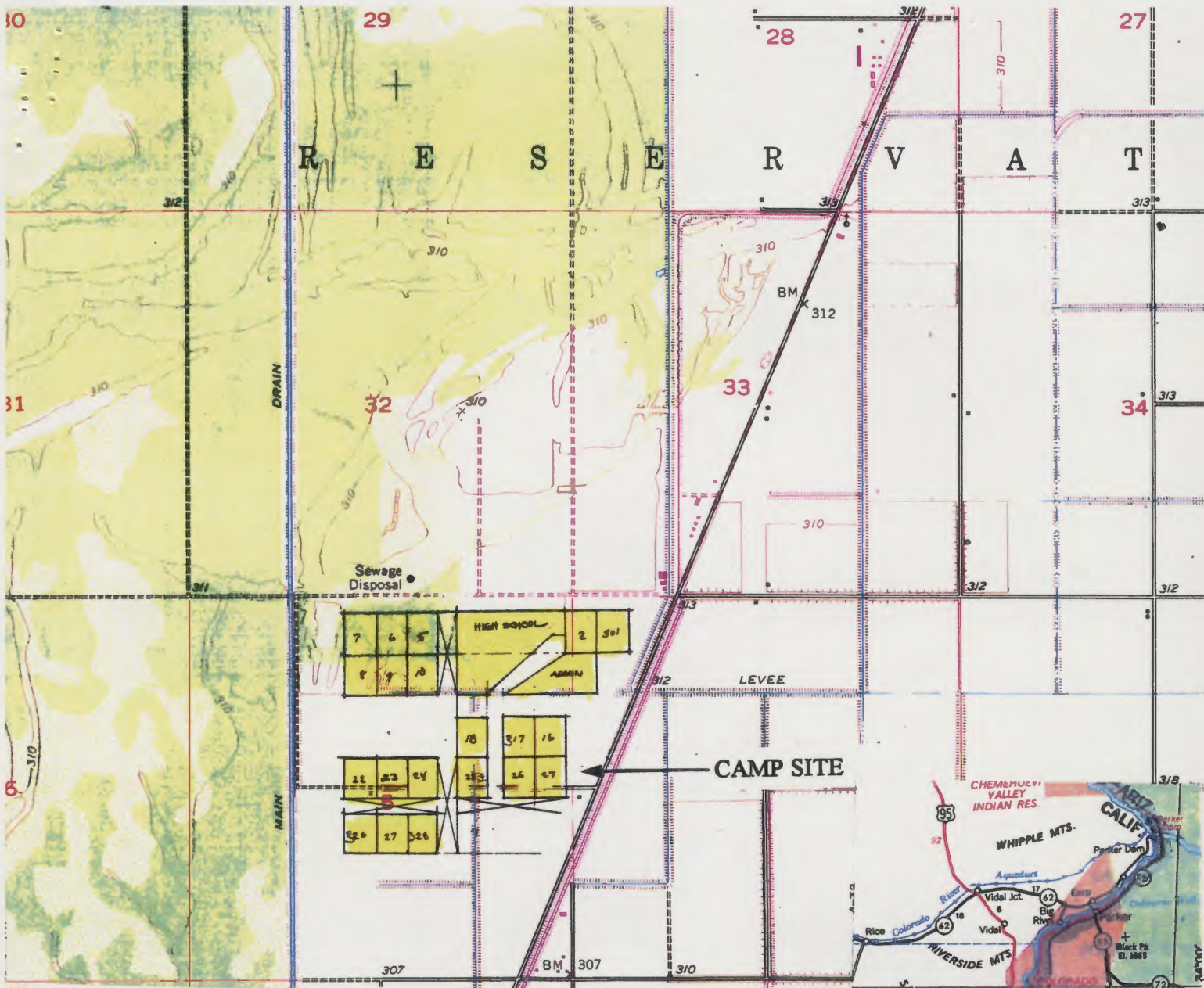
PINEDALE	695
SALINAS	3,475
SANTA ANITA	1,503
MAYER	246

DIRECT EVACUATION:

MILITARY AREA 1	7,426
MILITARY AREA 2	4,229
TOTAL	17,574

**POSTON 2 WRA CAMP
YUMA COUNTY, ARIZONA**





**POSTON, ARIZONA
YUMA COUNTY**

**THERE ARE THREE CAMPS TO
THIS PROJECT.**

POSTON I	9,483
POSTON II	5,952
POSTON III	2,987

PEAK POPULATION APRIL 14, 1943 17,132

CAMP OPENED:

POSTON I	MAY 8, 1942
POSTON II	JULY 3, 1942
POSTON III	AUGUST 3, 1942

**THE CAMP AT FIRST WAS UNDER THE INDIAN SERVICE.
THE CAMPS WERE EACH THREE MILES APART IN THE
NORTH - SOUTH DIRECTION.**

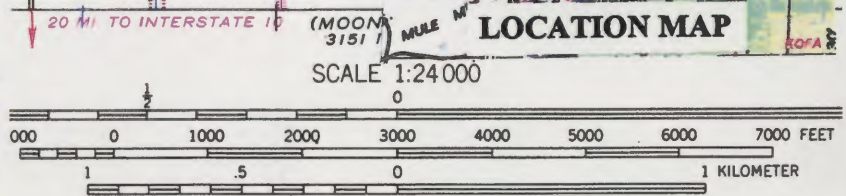
PEOPLE CAME FROM:

PINEDALE	695
SALINAS	3,475
SANTA ANITA	1,503
MAYER	246

DIRECT EVACUATION:

MILITARY AREA 1	7,426
MILITARY AREA 2	4,229

TOTAL 17,574

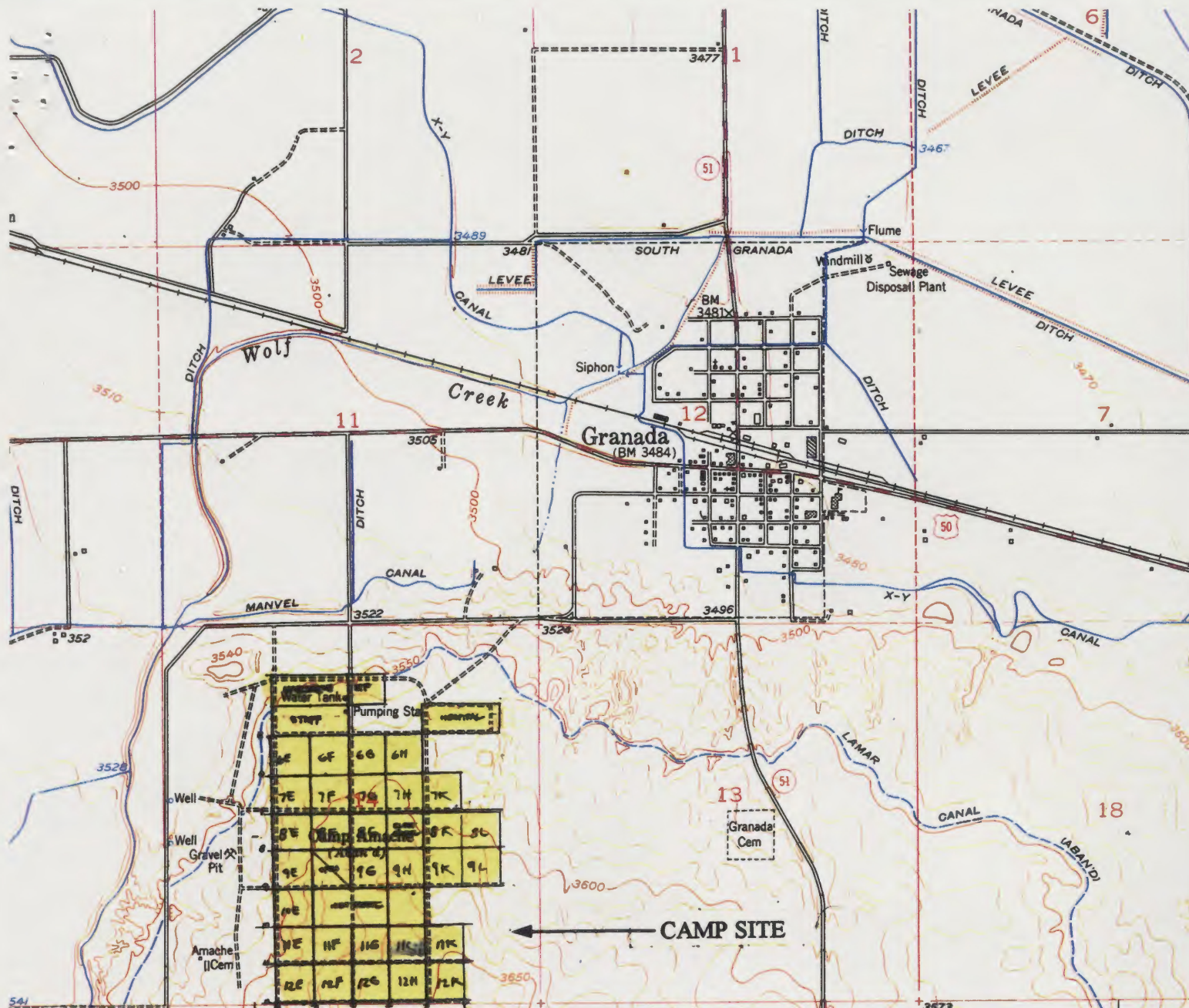


CONTOUR INTERVAL 10 FEET
DATUM IS MEAN SEA LEVEL



QUADRANGLE LOCATION

**POSTON 3 WRA CAMP
YUMA COUNTY, ARIZONA**



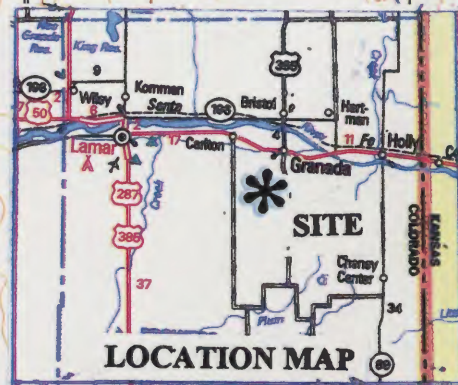
**AMACHE, GRANADA COLORADO
PROWERS COUNTY**

**CAMP OPENED AUGUST 27, 1942
FIRST TO ARRIVE FROM MERCED
ASSEMBLY CAMP.**

POPULATION FROM:
 MERCED 7,554
 SANTA ANITA 4,534
 3,062

**JUNE 21, 1944 530 CAME TO AMACHE FROM
CAMP JEROME WHEN IT CLOSED
JAMES G. LINDLEY PROJECT DIRECTOR**

PROJECT AREA:
 CAMP SITE 640 ACRES
 XY RANCH 4,095
 KOEN RANCH 3,688
TOTAL 10,423 ACRES



**AMACHE WRA CAMP
PROWERS COUNTY, COLORADO**

GRANADA, COLO.
N3800—W10215/7.5

