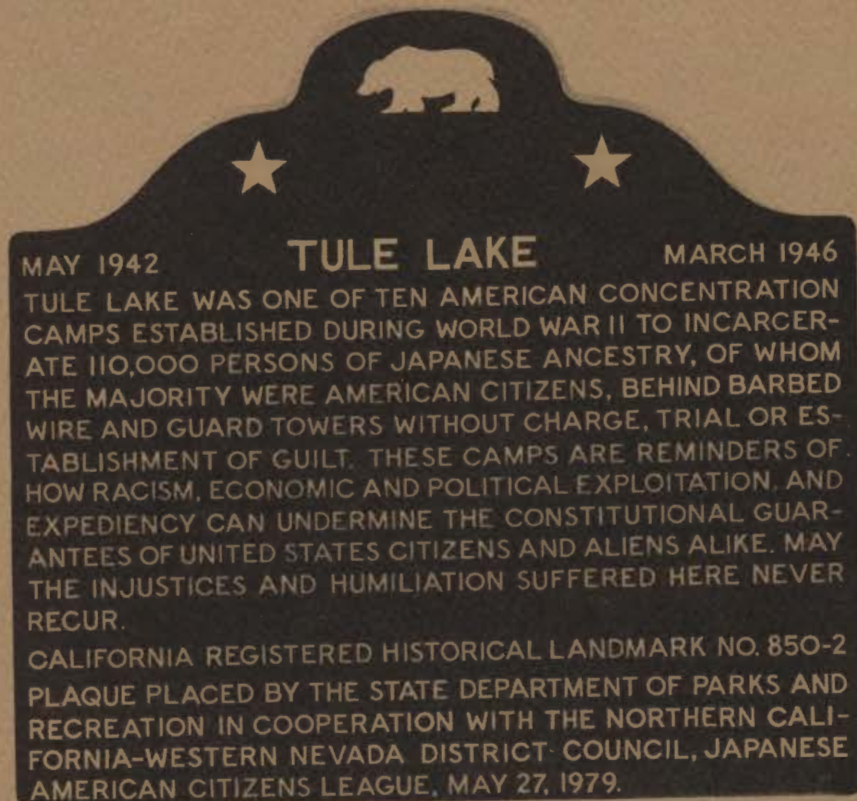


# Tulelake Reunion



SACRAMENTO, CALIFORNIA  
MAY 24 - 27, 1985





### STATE HISTORICAL LANDMARK NO. 850-2

The California Department of Parks and Recreation has designated the site of the former Tule Lake Camp as an official State Historical Landmark (No. 850-2). Despite some controversy over the use of the phrase "concentration camps," the Department approved the plaque wording after modifying the phrase to read "American concentration camps."

The State of California has provided the official bronze plaque. However, the stone monument (which contains a time capsule) and dedication ceremony must be privately funded.



## THE TULE LAKE CAMP

Tule Lake was one of ten concentration camps built by the U.S. Government during World War II to incarcerate over 110,000 persons of Japanese ancestry.

Located in a desolate area in Northern California near the Oregon border, the camp was designed to hold approximately 16,000 persons. The first evacuees reached Tule Lake on May 27, 1942, bringing only what they could carry in their arms. More followed — men and women, rich and poor, young and old, healthy and sick, citizens and aliens. Their only crime was their Japanese ancestry.

Evacuees were brought from all over the West Coast. However, significant numbers came from Butte, Yuba, Placer, and Sacramento counties in California; King, Clark, Cowlitz, and Pierce counties in Washington; and Hood River, Marion, and Multnomah counties in Oregon.

The people were housed in row, upon row of crowded, tar-paper barracks. The camp perimeter was surrounded by barbed wire fences. Along them were wooden watchtowers manned day and night by armed military personnel. Life was hard. The pressures of involuntary confinement led to occasional "disturbances," however, most of camp life consisted of just trying to maintain life's basic activities — eating, sleeping, working, caring for the sick, educating the young — under very difficult circumstances.

On July 15, 1943, Tule Lake was officially declared a "Segregation Center." Commencing in September 1943, evacuees in the other nine concentration camps whose loyalty were in question by the U.S. Government were segregated and transferred to Tule Lake. Thousands of original Tule Lake evacuees were again uprooted and transferred to other camps to make room. The segregation program took more than one month to complete. The emotional trauma caused by branding evacuees as "loyal" or "disloyal" remains to this day.

On March 20, 1946, Tule Lake officially closed its gates, the last of the ten camps to do so.

The shattering of lives, monetary loss, and human misery inflicted by the evacuation were staggering; the humiliation, indignities, and mental anguish beyond calculation. This dedication is a tribute to the people who endured this tragedy — both the living and those who have passed away. In the words of the plaque which will forever mark this site, "... may the injustices and humiliation suffered here never recur."



Abalone Mountain

TULELAKE REUNION '85  
Sacramento, California  
May 24, 25 & 26, 1985

GREETINGS:

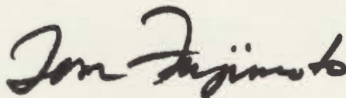
Welcome to the Tulelake Reunion '85. We are proud to be your host and extend to each of you a pleasant stay in Sacramento.

The chairpersons for the various events join with me in presenting to you an opportunity to renew old acquaintances and make new friends as you reminisce and relive your journey to Tulelake.

We had the honor to stage a successful reunion in 1982, and now, it is our hope that the many hours of planning and preparation by the reunion committee members will bring to you an equally special reunion in 1985.

May your weekend in Sacramento be an enjoyable and memorable one.

Sincerely,



Tom Fujimoto  
General Chairman

---

Greetings and welcome again to the "out-of-towners" who attended our first Tulelake Reunion in 1982, and hearty greetings and welcome to the "first-timers" to this second reunion.

For your relaxation and pleasure, we have prepared a program with fun events but also with those reminders which bond us in friendship and remembrances of those trying days spent at Tulelake. The reminders, through our direct experiences should renew and reinforce our mission of educating the people here and abroad that the use of evacuation and concentration of American citizens will not be repeated.

Relocation from Tulelake has dispersed us far and wide. Reunions afford the opportunity to unite in common bond of remembrances, renewal and reinforcement.

May your days at this second Tulelake Reunion add a memorable chapter in your Book of Memories.

Deki Seto

"Out-of-town" Coordinator



## SCHEDULE OF ACTIVITIES

(Times - Tentative)

### FRIDAY, MAY 24, 1985

1:00 pm - 10:00 pm Registration  
3:00 pm - 2:00 am Hospitality

### SATURDAY, MAY 25, 1985

8:00 am - 5:00 pm Registration  
10:00 am - 2:00 am Hospitality  
10:00 am - 10:00 pm Exhibits  
10:00 am - 5:00 pm Golf  
8:00 am - 4:00 pm Tour - Reno  
8:30 am - 4:00 pm Tour - Wine Country  
7:00 pm to 1:00 am Mixer - Dinner & Entertainment

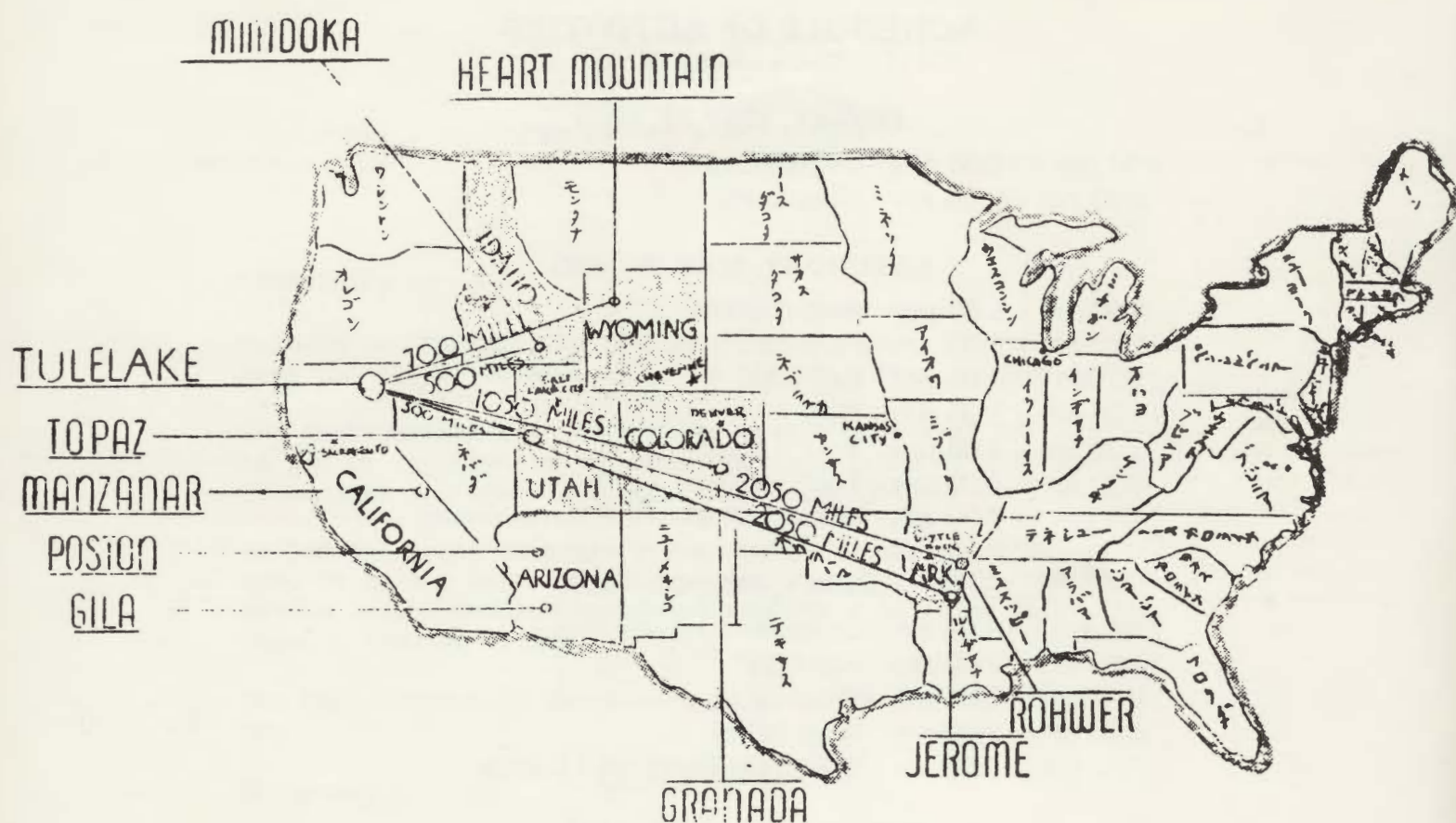
### SUNDAY, MAY 26, 1985

7:00 am - 10:00 am Continental Breakfast  
10:00 am - 7:00 pm Exhibits  
11:00 am - 4:00 pm Picnic  
4:00 pm - 2:00 am Hospitality  
7:00 pm - 1:00 am Sayonara Banquet / Dance

### MONDAY, MAY 27, 1985

7:00 am - 11:00 am Continental Breakfast





## APPROXIMATE DISTANCE TO OTHER RELOCATION CENTERS

### TULE LAKE EVACUEES — 1942 (W.R.A. Statistics By County)

	All Evacuees	To Tule Lake			
<b>CALIFORNIA</b>			<b>WASHINGTON</b>		
Alameda	4,805	320	Clark	129	115
Butte	233	195	Cowlitz	126	111
Los Angeles	34,141	396	King	2,870	2,703
Monterey	1,847	127	Pierce	2,006	946
Placer	1,829	1,807	Thurston	85	77
Sacramento	8,038	4,984	Whatcom	34	34
San Francisco	4,883	236	<b>OREGON</b>		
San Joaquin	5,014	379	Hood River	431	425
Santa Clara	3,775	234	Jefferson	23	21
Yolo	1,135	334	Marion	180	175
Yuba	542	476	Multnomah	2,309	312
			Polk	49	44
			Wasco	66	66
			<b>OTHER</b>		
				36,617	901
			<b>TOTAL</b>		
				111,170	15,418



## THE EVACUATION

## CHRONOLOGICAL HIGHLIGHTS

### 1941

Dec. 7: Japanese planes attacked Pearl Harbor, Hawaii.

Dec. 8: Congress declared war against Japan.

Dec. 10: Attorney General Francis Biddle assured persons of Japanese ancestry, citizens and aliens alike, that they would be treated fairly and without discrimination.

### 1942

Jan. 19: Attorney General Biddle issued first of series of orders establishing limited strategic areas along the Pacific Coast and requiring the removal of all (German, Italian, and Japanese) enemy aliens from these areas.

Feb. 10: Department of Justice refused to order aliens evacuated from Bainbridge Island, Washington, as requested by Navy Department.

Feb. 13: West Congressional delegation sent a letter to President Roosevelt recommending the "immediate evacuation of all persons of Japanese lineage . . . aliens and citizens alike" from the "entire strategic area" of California, Oregon, and Washington.

Feb. 14: Lt. Gen. John L. DeWitt, Commanding General of the Western Defense Command, sent a memorandum to Secretary of War Henry L. Stimson recommending the evacuation of all Japanese from the west coast.

Feb. 19: President Roosevelt signed Executive Order No. 9066, authorizing the Secretary of War, or any military command designated by the Secretary, to establish "military areas" and exclude therefrom "any or all persons."

Feb. 20: Secretary Stimson wrote to General DeWitt designating him as a military commander empowered to carry out an evacuation within his command under the terms of Executive Order No. 9066. (No other military command, including Hawaii's where martial law was declared, requested this power.)

Feb. 21-Mar. 12: Tolan Congressional Committee on National Defense Migration conducted public hearings on possible evacuation of Japanese Americans in San Francisco, Los Angeles, Portland, and Seattle.

Mar. 2: General DeWitt issued Public Proclamation No. 1 designating the western half of Washington, Oregon, and California and the southern third of Arizona as a military area and announced that eventually all persons of Japanese ancestry would be removed therefrom. He also urged the Japanese to voluntarily leave Military Area No. 1 for other areas.

Mar. 8-10: National JACL Council met in emergency session in San Francisco and agreed to cooperate in the Evacuation as a patriotic contribution, though protesting its necessity and legality.

Mar. 11: General DeWitt established the Wartime Civil Control Administration (WCCA) and appointed Colonel Karl R. Bendtsen as director to carry out the evacuation program.

Mar. 18: President Roosevelt signed Executive Order No. 9102 creating the War Relocation Authority (WRA), a civilian agency, to assist persons evacuated by the military and named Dr. Milton S. Eisenhower as director.

Mar. 21: President Roosevelt signed Public Law 503 (77th Congress) making it a federal offense to violate any order issued by a designated military commander under authority of Executive Order No. 9066. General DeWitt issued curfew and travel restrictions for all enemy aliens and Japanese Americans.

Mar. 23: General DeWitt issued Civilian Exclusion Order No. 1 ordering the evacuation of all persons of Japanese ancestry from Bainbridge Island, Puget Sound, Washington, and their removal to the Puvallup Assembly Center near Seattle by March 30.

Mar. 27: General DeWitt issued Public Proclamation No. 4 (effective March 29) forbidding further voluntary migrations of persons of Japanese ancestry and "freezing" them to their homes as of that date.

May 8: first contingent of evacuees arrived at Colorado River (Poston) Relocation center Near Parker, Arizona.

May 21: Group of 15 evacuees left Portland Assembly Center for seasonal agricultural work under civilian restriction order of the Western Defense Command.

May 27: First contingent of evacuees arrived at Tule Lake Relocation Center in Northern California.

June 1: Manzanar Reception Center was transferred from WCCA to WRA control and renamed Manzanar Relocation Center.

June 2: General DeWitt issued Proclamation No. 6 forbidding further voluntary migration by persons of Japanese ancestry from the eastern half of Military Area No. 2 of California and simultaneously announced that all such people would be removed from this area directly to WRA centers. (Though not mentioned in General DeWitt's Final Report on the Japanese Evacuation from the West Coast, 1942, most of these persons had moved voluntarily at their own expense from Military Area No. 1 to Military Area No. 2 with the express understanding that they would not be evacuated.)

June 17: President Roosevelt appointed Dillon S. Meyer to succeed Dr. Milton S. Eisenhower as WRA director after Eisenhower's resignation to become deputy Director of the Office of War Information.

July 20: WRA adopted its first leave policy permitting Nisei evacuees to leave its centers for private employment in the Middle West. The first contingent of evacuees (from Turlock Assembly Center) arrived at the Gila River Relocation Center near Sacaton, Arizona.

Aug. 7: Western Defense Command announced the completion of the first phase of evacuation - removal of 110,000 persons of Japanese ancestry from their homes in Military Area No. 1 either to WCCA assembly centers or to WRA relocation centers.

Aug. 10: First contingent of evacuees (from Puyallup Assembly Center) arrived at Minidoka Relocation Center near Twin Falls, Idaho.)

Aug. 12: First contingent of evacuees (from Pomona Assembly Center) arrived at Heart Mountain Relocation Center near Cody, Wyoming.

Aug. 27: First contingent of evacuees (from Merced Assembly Center) arrived at Granada Relocation Center near Lamar, Colorado.

Sept. 11: First contingent of evacuees (from Tanforan Assembly Center) arrived at Central Utah (Topaz) Relocation Center near Delta, Utah.

Sept. 18: First contingent of evacuees (from Stockton Assembly Center) arrived at Rohwer Relocation Center near McGehee, Arkansas.

Sept. 26: WRA issued its basic leave regulations to become effective Oct. 1.

Oct. 6: First contingent of evacuees (from Fresno Assembly Center) arrived at Jerome Relocation Center near Dermott, Arkansas.

Nov. 3: Transfer of evacuees from WCCA to WRA jurisdiction was completed with arrival of final contingent to the Jerome Relocation Center.

Nov. 25: Emergency meeting of National JACL Council, with delegates from all ten WRA centers and the "free zone," held in Salt Lake City, Utah. Among decisions reached were those calling for restoration of Selective Service to eligible Nisei, expedited leave clearances, and consideration of compensation for evacuee property losses.

### 1943

Jan. 28: Secretary Stimson announced plans for the formation of a combat team to be composed of volunteer Nisei from the relocation center, the "free zone," and Hawaii. This Combat Team was later designated as the 442nd Regimental Combat Team and saw service in Italy and in France.

May 17: United States Supreme Court unanimously upheld rights of American-born Nisei to United States citizenship in suit brought by the Native Sons of the Golden West (John T. Reagan v. Cameron King, as registrar of voters for the County of San Francisco, California).

June 21: United States Supreme Court unanimously held to be constitutional as a valid exercise of the war powers the curfew (Minoru Yasui v. United States of America) and the travel (Gordon K. Hirabayashi v. United States of America) restrictions imposed by General DeWitt prior to the issuance of the evacuation orders.

### 1944

Jan. 20: Selective Service System was reopened to eligible Nisei on same basis as for other Americans.

Feb. 16: President Roosevelt signed Executive Order No. 9423 transferring WRA to the Department of the Interior. Previously, the WRA was an independent agency.

June 30: Jerome Relocation Center, last of the WRA camps to open, was the first to be closed, with its 5,000 remaining residents transferred to other centers.

July 1: President Roosevelt signed Law 45 (78th Congress) permitting United States citizens to renounce their citizenship under procedures approved by the Attorney General this was to allow several thousand disillusioned Nisei evacuees to renounce their American Citizenship.

Dec. 17: War Department announced the revocation (effective Jan. 2, 1945) of the West Coast mass exclusion orders which had been in effect against persons of Japanese ancestry since the spring of 1942.

Dec. 18: United States Supreme Court ruled 6-3, with Justice Roberts, Murphy, and Jackson dissenting (in the case of Fred Toyosaburo Korematsu v. United States of America), that the Evacuation was constitutional as a valid exercise of the war powers of Congress. The same day, in a unanimous opinion, the same Supreme Court held (in the case of Ex Parte Mitsuye Endo) that it was unconstitutional to detain a loyal American citizen in a WRA camp.

### 1945

May 14: Secretary of the Interior Harold L. Ickes publicly denounced incidents of west coast terrorism and violence against returning evacuees.

Aug. 15: VJ Day.

Sept. 4: Western Defense Command issued Public Proclamation No. 24 revoking all individual exclusion orders and all further military restrictions against persons of Japanese ancestry.

### 1946

Feb. 26-Mar. 4: Ninth Biennial National JACL Convention met in Denver, Colorado, in its first postwar session. Among resolutions unanimously adopted was one to secure enactment of an evacuation claims law.

Mar. 20: Tule Lake Segregation Center, the last of the WRA camps to remain in operation, was officially closed.

May 15: Last of the WRA field offices was closed.

June 30: WRA program officially terminated.



**WESTERN DEFENSE COMMAND AND FOURTH ARMY  
WARTIME CIVIL CONTROL ADMINISTRATION**

**Presidio of San Francisco, California**

**May 7, 1942**

**INSTRUCTIONS  
TO ALL PERSONS OF  
JAPANESE  
ANCESTRY**

**Living in the Following Area:**

**All of the City of Sacramento, State of California.**

Pursuant to the provisions of Civilian Exclusion Order No. 52, this Headquarters, dated May 7, 1942, all persons of Japanese ancestry, both alien and non-alien, will be evacuated from the above area by 12 o'clock noon, P. W. T., Saturday, May 16, 1942.

No Japanese person living in the above area will be permitted to change residence after 12 o'clock noon, P. W. T., Thursday, May 7, 1942, without obtaining special permission from the representative of the Commanding General, Northern California Sector, at the Civil Control Station located at:

**Civic Memorial Auditorium,  
Fifteenth and I Streets,  
Sacramento, California.**

Such permits will only be granted for the purpose of uniting members of a family, or in cases of grave emergency.

The Civil Control Station is equipped to assist the Japanese population affected by this evacuation in the following ways:

1. Give advice and instructions on the evacuation.
2. Provide services with respect to the management, leasing, sale, storage or other disposition of most kinds of property, such as real estate, business and professional equipment, household goods, boats, automobiles and livestock.
3. Provide temporary residence elsewhere for all Japanese in family groups.
4. Transport persons and a limited amount of clothing and equipment to their new residence.

**The Following Instructions Must Be Observed:**

1. A responsible member of each family, preferably the head of the family, or the person in whose name most of the property is held, and each individual living alone, will report to the Civil Control Station to receive further instructions. This must be done between 8:00 A. M. and 5:00 P. M. on Friday, May 8, 1942, or between 8:00 A. M. and 5:00 P. M. on Saturday, May 9, 1942, or between 8:00 A. M. and 5:00 P. M. on Sunday, May 10, 1942.

2. Evacuees must carry with them on departure for the Assembly Center, the following property:

- (a) Bedding and linens (no mattress) for each member of the family;
- (b) Toilet articles for each member of the family;
- (c) Extra clothing for each member of the family;
- (d) Sufficient knives, forks, spoons, plates, bowls and cups for each member of the family;
- (e) Essential personal effects for each member of the family.

All items carried will be securely packaged, tied and plainly marked with the name of the owner and numbered in accordance with instructions obtained at the Civil Control Station. The size and number of packages is limited to that which can be carried by the individual or family group.

3. No pets of any kind will be permitted.

4. No personal items and no household goods will be shipped to the Assembly Center.

5. The United States Government through its agencies will provide for the storage, at the sole risk of the owner, of the more substantial household items, such as iceboxes, washing machines, pianos and other heavy furniture. Cooking utensils and other small items will be accepted for storage if crated, packed and plainly marked with the name and address of the owner. Only one name and address will be used by a given family.

6. Each family, and individual living alone, will be furnished transportation to the Assembly Center or will be authorized to travel by private automobile in a supervised group. All instructions pertaining to the movement will be obtained at the Civil Control Station.

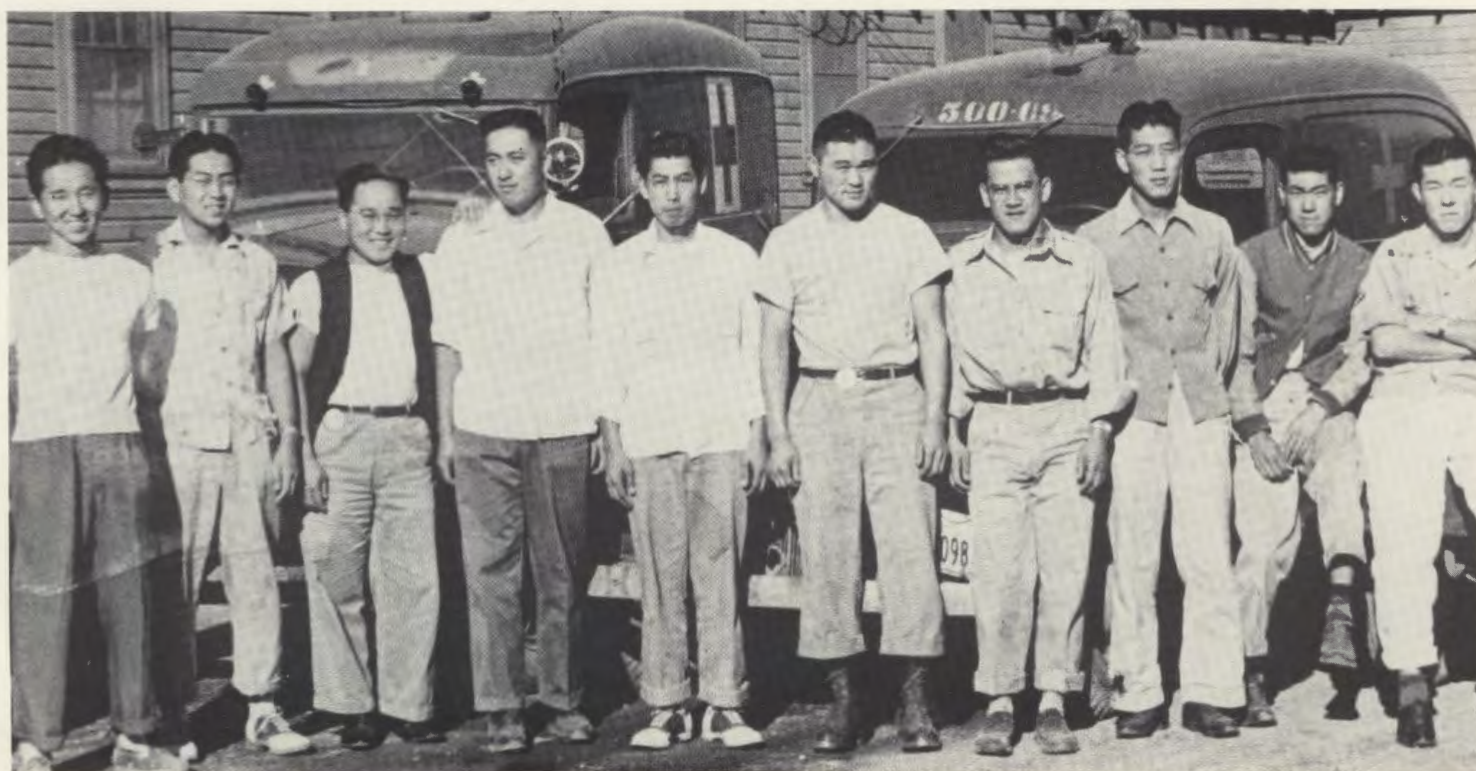
**Go to the Civil Control Station between the hours of 8:00 A. M. and 5:00 P. M., Friday, May 8, 1942, or between the hours of 8:00 A. M. and 5:00 P. M., Saturday, May 9, 1942, or between the hours of 8:00 A. M. and 5:00 P. M., Sunday, May 10, 1942, to receive further instructions.**

**J. L. DeWITT  
Lieutenant General, U. S. Army  
Commanding**





Fire Station No. 1



Ambulance Attendants





Japanese Language School



Girls Friendship Club





### Mess Crew Block 36



### Ward II Sunday School Teachers





Tulalake Orchestra



Down Beats Band





Newell Star - Tulalake Newspaper



Placement Office - May 18, 1944





Ward IV Sunday S



Japanese Language





chool - April 1945



High School Class





Basketball Team ZEPHYRS - AA Division - 1944 - 1945 Champions  
 "Angel" Kagiya, Mas Tambara, Tsutomu Ota, Mas Ota (Coach), Isao Ota  
 Hitoshi Ota, Fred Harada, "Kiki" Yoshimura







Tulalake Baseball Team



Okole House, Inc.





Bank of America - Tulare



Shoe Repair Shop



Motor Pool - January 1943



Barber Shop



Tulare Center Limits



Block Managers' Meeting - January 9, 1946





Farm Potato Planting



Packing Shed - 1942



Art Class



Harvest Festival - October 31



Hoshidan Group



Gymnasium Fire - December 31, 1945





Union Christian Church



Clothing Unit - 1944



# TULELAKE REUNION 1982



Tom Okubo



Banquet Entertainment



Clothing Unit 1982 - 38 Years Later



# TULELAKE REUNION 1982



Picnic at Elk Grove Park



Lillian Kushida - Entertainment



Visitors at Tulelake Exhibit



## PRE-REGISTRANTS

ABE, Bill W., Sacramento, CA  
 AKITA, Marilyn (Motomatsu), Seattle, WA  
 AKITOMO, Yoshiaki, Chicago, IL  
 AKIYAMA, Jack Y. & Evelyn (Takagi), Sacramento, CA  
 AKIZUKI, Sumi (Suguro), Mercer Island, WA  
 AMEMIYA, Hodge H. & May (Taketaya), Torrance, CA  
 AOKI, George & Sakaye (Ishihara)  
 ARAI, May M. (Sato), Sacramento, CA  
 ARIKI, Lily Y. (Tsutui), Denver, CO  
 AZUMA, Alyse S., Chicago, IL  
 BESSHO, Yasuko (Mizoue), Huntington Beach, CA  
 CHANG, Harry & Bess T. (Sonoda), Honolulu, HI  
 CHIKAMI, Frank & Joyce (Tsujimichi), Reno, NV  
 DEGUCHI, Seiichi & Mae (Suguro), Seattle, WA  
 DIONZON, Judy Y. (Ishigami), Los Angeles, CA  
 ECHIGOSHIMA, Ellen H. (Hasegawa), Bellevue, WA  
 EGI, Tatsuo & Dorothy H. (Sofye), Tracy, CA  
 ENKOJI, George & Eunice Y. (Sano), Harrisonburg, VA  
 ENOMOTO, Jerry J. & Dorothy, Sacramento, CA  
 FUJII, Jim G. & Toyo (Tsugawa), Sacramento, CA  
 FUJIKAWA, Masao & Toshiye (Masaki), Sacramento, CA  
 FUJIMOTO, Jack & Grace F. (Toya), Los Angeles, CA  
 FUJIMOTO, Mitsuo G., Sacramento, CA  
 FUJIMOTO, Tom & Amie, Sacramento, CA  
 FUJIMURA, Shizuko R. (Yamamoto), Gardena, CA  
 FUJIOKA, Joe & Hoshi, San Francisco, CA  
 FUJIOKA, Mollie T. (Yasutake), Walnut Creek, CA  
 FUJIOKA, Richard T. & Mary, Oxford, MI  
 FUJISHIN, Kay K. & Betty S. (Takayama), Sunnyvale, CA  
 FUJITA, Hana, Los Angeles, CA  
 FUJITA, Kats (Hashimoto), Tacoma, WA  
 FUJITANI, Frank & Kay (Uyehara), Hayward, CA  
 FUJITANI, James S., San Francisco, CA  
 FUJITANI, Kay, Sacramento, CA  
 FUJIURA, Kim (Hiuga), Carson, CA  
 FUKUDA, Joseph T. & Masako, Sacramento, CA  
 FUKUMORI, Taro & Nancy, Albany, CA  
 FUKUMOTO, Jack & Carole (Nishikawa), Dixon, CA  
 FUKUNAGA, Ichio & Aiko, Nagoya, Japan  
 FURUKAWA, Hideo B. & Morie (Furukawa), Seattle, WA  
 FURUKAWA, Yukio & Eva (Aramaki), Seattle, WA  
 FURUKAWA, Yoshio A. & Shizuye, Seattle, WA  
 FURUTA, Yo, Carson, CA  
 FUTATSUKI, Yon & Sawae (Fukumori), San Francisco, CA  
 FUWA, Riichi & Tane, Sacramento, CA  
 GOTO, George & Susie, Roseville, CA  
 GOTOW, Kaoru & Katsuye (Kotani), Sacramento, CA  
 HAMANISHI, Masako S. (Doi), Puyallup, WA  
 HARA, Tom T. & Rose (Washino), Sacramento, CA  
 HARADA, George & Tsutayo, Monterey Park, CA  
 HASEGAWA, Sadako M. (Mizoue), Denver, CO  
 HASEGAWA, Willie H., Denver, CO  
 HATAMIYA, Frank I. & Mason (Nakamura), Live Oak, CA  
 HAYANO, Henry I. & Kimie, San Jose, CA  
 HAYANO, Sadamu & Ritsuko, Marysville, CA  
 HAYASHI, Akio & Alice (Sakata), Sacramento, CA  
 HAYASHI, Fred S. & Kimiko (Iwamoto), Darien, IL  
 HAYASHIDA, Bob S. & Grace, Loomis, CA  
 HAYASHIDA, Setsuko (Sato), Loomis, CA  
 HIGASHIHARA, Fumio & Lorraine (Takayama), San Jose, CA  
 HIMOTO, Betty C. (Hori), Isleton, CA  
 HIMOTO, Masao, Walnut Grove, CA  
 HIMOTO, Tamayo, Walnut Grove, CA  
 HIRAGA, Frances S. (Kakigi), Sacramento, CA  
 HIRAGA, George M. & Florence, San Jose, CA  
 HIRAGA, Kei & Cathy, Sanger, CA  
 HIRAI, Charley C. & Martha (Fujikawa), Mattawa, WA  
 HIRAI, Shigeko (Iseri), Chewelah, WA  
 HIRAOKA, June, Torrance, CA  
 HIRAOKA, Rose, Torrance, CA  
 HIRATA, Richard & Molly M. (Kono), Huntington Beach, CA  
 HIRONAKA, Elaine H. (Osaki), Sacramento, CA  
 HIRONAKA, Kuni & Rose K. (Asoo), Sacramento, CA  
 HITOMI, Dick M. & Lucille (Takagi), Campbell, CA  
 HIUGA, Kunio & Grace, Sacramento, CA  
 HIUGA, Mika (Asai), Ontario, OR  
 HIURA, Masao & Faye M. (Tamura), Sacramento, CA  
 HIYAMA, Frank & Midori (Makimoto), Sacramento, CA  
 HO, Michiko T. (Takahashi), Palo Alto, CA  
 HONDA, Katsuki D. & Lillian (Tomita), Sacramento, CA  
 HONGO, Mas, San Mateo, CA  
 HORI, Michi (Taira), Agoura, CA  
 HORIUCHI, Sadako G. (Obayashi), San Lorenzo, CA  
 HOSODA, Paul & Mary I. (Ito), Bellevue, WA  
 HOSOKAWA, Kenji & Ruth (Nakanishi), Sacramento, CA  
 HYOGO, Thelma C., Cypress, CA  
 HYOSAKA, Ken M. & Fumi, Los Angeles, CA  
 IDA, Haruaki & Mabel K., Seattle, WA  
 IIDA, Eiko (Nobuyama), Gardena, CA  
 IKEMOTO, Frank S. & Blossom, Sacramento, CA  
 IMAI, Akio R. & Michiko (Date), Sacramento, CA  
 IMAI, George & Eiko (Tanaka), Sacramento, CA  
 IMAZEKI, Howard M., San Francisco, CA  
 INOUE, Harry & Mary S. (Kagiyama), Sacramento, CA  
 IRIYAMA, Masao & Matsuko (Tabata), Westminster, CA  
 ISHIDA, Masako, Campbell, CA  
 ISHIDA, Yone (Obayashi), San Lorenzo, CA  
 ISHIGAMI, Aki, Los Angeles, CA  
 ISHIGAMI, Kei, Los Angeles, CA  
 ISHIHARA, Joey T., Sacramento, CA  
 ISHIHARA, Yoshiharu & Fumie, Sacramento, CA  
 ISHII, Edward K. & Yuriko (Kumamoto), Sacramento, CA  
 ISHIMA, Amy M. (Sakuma), Sacramento, CA  
 ISHIMOTO, George & Hiroko, Marysville, CA  
 ISHIMOTO, Mary H. (Maruyama), Los Angeles, CA  
 ISHINO, Dorothy So. El Monte, CA (Guest of Kawano, Susan)  
 ISOZAKI, Sam & Jean (Uyemura), Stockton, CA  
 ITANO, Harvey A., La Jolla, CA  
 ITANO, T. Dean, Sacramento, CA  
 IWAI, Yo & Masako (Akitomo), Oxnard, CA  
 IWANAGA, James Y. & Mary H., Fullerton, CA  
 IWASA, Yoshio & Ritsuko (Nakahira), Sacramento, CA  
 IWASAKI, Min F., Los Angeles, CA  
 IWASAKI, Yosh, Los Angeles, CA  
 IZUMI, Misao I. (Oshima), St. Louis, MO  
 KAGEHIRO, Satoru, San Francisco, CA



KAGIYAMA, Angel & Terry (Enkoji), Sacramento, CA  
 KAMBARA, George K. & May F. (Tanaka), Los Angeles, CA  
 KASHIWABARA, John E., Long Beach, CA  
 KASHIWABARA, Ken, Penryn, CA  
 KASHIWABARA, Mike & Masako, Penryn, CA  
 KASHIWABARA, Tom & Mary, Sacramento, CA  
 KASHIWADA, Frank G. & Sallie (Tsugawa), Sacramento, CA  
 KASHIWAGI, Lillian M. (Asoo), Sacramento, CA  
 KATO, Chiyo (Butsuda), Los Angeles, CA  
 KATO, Jerry S. & Helen (Hoshino), Sacramento, CA  
 KATO, Jiro & Kiyo, Albany, CA  
 KATO, Kiyoshi & Kaye (Fujii), Sacramento, CA  
 KATO, Kaz & Mitsi (Nishimura), Berkeley, CA  
 KATO, Ray M. & Mary (Morimoto), Monterey Park, CA  
 KATSUYAMA, Alyce T., San Francisco, CA  
 KAWABE, Sachi (Kumagai), Los Angeles, CA  
 KAWADA, Charles S., West Sacramento, CA  
 KAWADA, William K., Fullerton, CA  
 KAWAGUCHI, Mae M. (Furuzawa), Sunnyvale, CA  
 KAWAGUCHI, Allen & Yoshiko (Sera), Morgan Hill, CA  
 KAWAHATA, Harry M. & Harriet (Tsukamoto), Loomis, CA  
 KAWANO, Jerry M. & Sue, Santa Barbara, CA  
 KAWASE, Susan (Aredas), So. El Monte, CA  
 KAWASHIMA, Satoru & Yoshiko S. (Sofye), San Jose, CA  
 KAYAHARA, Laura N. (Fujiye), Honolulu, HI  
 KIHARA, Yo & Matsuko (Shimada), Sacramento, CA  
 KINOSHITA, Kiyoshi & Kikuko, San Jose, CA  
 KINOSHITA, Sam & Katherine, San Francisco, CA  
 KIYAMA, Tony, Sacramento, CA  
 KO, Alyce (Tokuno), Richland, WA  
 KOBAYASHI, Kiyomi (Kanegawa), Gardena, CA  
 KOBAYASHI, John M. & Masako (Kitajima), Lawndale, CA  
 KOMATSU, Jordan, Los Angeles, CA  
 KONDO, Aster & Sadame (Kageta), Loomis, CA  
 KOTANI, Ben T. & Grace S. (Morishita), Sacramento, CA  
 KOYAMA, Akiko, Sacramento, CA  
 KOZAIKU, Bob & Sumi (Miyamoto), Loomis, CA  
 KOZONO, Ard K. & Mary (Nitta), West Sacramento, CA  
 KUBO, Ellen A., Penryn, CA  
 KUBO, George J. & Muriel M., Sacramento, CA  
 KUBO, James J. & Tsugi, Sacramento, CA  
 KUBOTA, Barney & Nami (Kinoshita), Sacramento, CA  
 KUMAGAI, Sadayo (Washino), Costa Mesa, CA  
 KUMAMOTO, Koki & Ayako, Niles, IL  
 KUNIBE, Thomas & Alice (Abe), Sacramento, CA  
 KUNISHI, Michiko (Shimada), Sacramento, CA  
 KUNITAKE, George & Miyo (Ishigami), Los Angeles, CA  
 KURIMOTO, Eiko (Yoshida), Sacramento, CA  
 KUSHIDA, Aki & Lillian (Tanihana), Sacramento, CA  
 KUWADA, Hank H. & Amy, El Cerrito, CA  
 LEY, Harry P. (Guest of Motomatsu, Nancy)  
 LUDERS, Ruth (Otani), Seattle, WA  
 MACHIDA, Roy C. & Fumy, Los Angeles, CA  
 MAEDA, Sam, Rocklin, CA  
 MAKINO, Jimmy & Masayo (Uchiyama), San Gabriel, CA  
 MAKISHIMA, Joe, Rio Linda, CA  
 MARUYAMA, Paul M., St. Louis, MO  
 MASAKI, Amy (Yamada), Sacramento, CA  
 MASAKI, Percy & Gladys, Sacramento, CA  
 MASUDA, Masuo & Taeko (Uyeno), Newcastle, CA  
 MASUOKA, Noboru & Chiyeko, Sunnyvale, CA  
 MASUOKA, Takashi, Sunnyvale, CA  
 MATSUDA, Kenzo F. & Betty, Sacramento, CA  
 MATSUDA, Tom T. & Akiko (Morimoto), Penryn, CA  
 MATSUHARA, Howard S. & Ruby (Masuda), Sacramento, CA  
 MATSUMOTO, Amy E. (Ikeda), Sacramento, CA  
 MATSUMOTO, Tom & Helen (Horio), Sunnyvale, CA  
 MATSUMOTO, Milton, Stockton, CA  
 MATSUMURA, Robert & Esther M. (Ozawa), Marysville, CA  
 MATSUNAGA, Shig, Hilo, HI  
 MATSUNE, Ralph H., Stockton, CA  
 MATSUO, Shoichi & Teiko (Ishihara), Sacramento, CA  
 MATSUURA, Tosh J. & Betty H. (Yamashiro), Sacramento, CA  
 MAYEDA, Bryan & May (Mizobe), Sacramento, CA  
 MENDA, Masao, Chicago, IL  
 MIHO, Tom, Temple City, CA  
 MITSUTOME, Shimako, Sacramento, CA  
 MIURA, Sandra A. (Sofye), Santa Cruz, CA  
 MIURA, Shinichi & Kiyoko, Sacramento, CA  
 MIYAGAWA, Starr T. & Karen, Sacramento, CA  
 MIYASHIRO, Stephen T. & Florence (Nagano), Kapaa, HI  
 MIZOBE, Tsuruyo, Sacramento, CA  
 MIZOUE, John K. & Kaz (Yeya), Boulder, CO  
 MOMII, Tak & Molly (Takagi), Berkeley, CA  
 MORI, Perry T. & Chiyo (Sato), Albuquerque, NM  
 MORIHATA, Pat S. & Chieko, Lodi, CA  
 MORIKAWA, Mary M. (Furuta), Los Angeles, CA  
 MORIMOTO, Tom T. & Nancy, Hoffman Estates, IL  
 MORINAKA, Anna H. (Takayama), Mt. View, CA  
 MORIOKA, Eiro & Fumiye, Sunnyvale, CA  
 MORISATO, George, Chicago, IL  
 MORISAWA, Harry, North Highland, CA  
 MORISHITA, Margaret T. (Hiuga), Ontario, OR  
 MORITA, Gloria (Tamura), El Cerrito, CA  
 MORITA, Yasuko (Hashimoto), Dixon, CA  
 MOTOMATSU, Nancy R., Olympia, WA  
 MURAKAMI, James J., Los Angeles, CA  
 MURAKAMI, Edward M. & June R. (Hirano), Torrance, CA  
 MURAKAMI, Mrs., (Mother-in-Law of Matsufuji, Riki)  
 MURAKAMI, Noby & Yuki, Sacramento, CA  
 MURAKAMI, Richard K. & Setsuko (Tamura), South Bend, WA  
 MURAKAMI, Yuri (Kotani), Vienna, VA  
 MURAKI, Kazuko (Mitsutome), Sacramento, CA  
 MITSUTOME, Shimako, Sacramento, CA  
 MYOSE, Alice E. (Nishimura), Sacramento, CA  
 NAGAI, Hisashi & Lily (Kuroko), Sacramento, CA  
 NAGATA, Haru, Sacramento, CA  
 NAKATA, Roy & Marie, Sacramento, CA  
 NAKAGAWA, Elsie, San Francisco, CA  
 NAKAGAWA, Gladys, San Francisco, CA  
 NAKAGAWA, Kiyoshi G., El Cerrito, CA  
 NAKAMURA, Mary H. (Hori), Ontario, OR  
 NAKAMURA, Tsuneo, Oakland, CA  
 NAKANISHI, Hiro R. & Chiyo, Bellevue, WA  
 NAKANISHI, Ted T. & Kim (Mitsui), Seattle, WA  
 NAKANO, Shigeo & Sumiye, Los Angeles, CA  
 NAKAO, George S. & Aya (Osaki), Yuba City, CA  
 NAKAO, Johnny S. & Grace M. (Kono), Sacramento, CA  
 NAKAOKI, Jiro & Reiko, Denver, CO  
 NAKASHIMA, Jimmie & Tomiyo (Ryono), El Toro, CA  
 NAKASHIMA, Sam I. & Maki, San Diego, CA  
 NAKATOGAWA, Dag, Sacramento, CA



NAKATOGAWA, Joe, Sacramento, CA  
 NAKATOGAWA, Toyoko, Sacramento, CA  
 NAKAUCHI, Kikuko (Okawa), Morgan Hill, CA  
 NAKAWAKI, Elaine, Yorba Linda, CA  
 NAKAWAKI, Tad T., Yorba Linda, CA  
 NAKAYAMA, Rikio & Akiye (Doi), Chicago, IL  
 NG, Grace H. (Nishioka), Gardena, CA  
 NIIYA, Tad & Anna (Nakamura), Alameda, CA  
 NISHI, Yoshie, Sacramento, CA  
 NISHIDA, Joe M. & Fumiko (Ueda), Sacramento, CA  
 NISHIHARA, Hideo & Alice (Tsujioka), Sacramento, CA  
 NISHIHARA, Yoshio R. & Lillian Y., Oakland, CA  
 NISHIJIMA, Kanji & Shiz (Nakanishi), Sacramento, CA  
 NISHIKAWA, Yutaka & Sakaye (Tenma), Dixon, CA  
 NISHIMI, Ralph H. & Ruby, Sacramento, CA  
 NISHIMOTO, Hugo & Marian, Auburn, CA  
 NISHIMURA, Ichiro & Hisako (Kimura), Sacramento, CA  
 NISHIOKA, Frank M. & Mary (Hiraga), Sacramento, CA  
 NOBUYE, Eddie & Eleanor, Sacramento, CA  
 OGAWA, Mitz & Deko, Sunnymead, CA  
 OGAWA, Yo, Sacramento, CA  
 OJI, Sukeo & Tey T. (Tokuno), Walnut Creek, CA  
 OKADA, Ino, Albany, CA  
 OKADA, Minoru & Yoriko (Hosokawa), Sacramento, CA  
 OKAMURA, Kimiko S., Sacramento, CA  
 OKAMURA, Kinuko, Sacramento, CA  
 OKASAKI, Frank, Sacramento, CA  
 OKI, Betty A., Los Angeles, CA  
 OKIMOTO, Frank N. & Terri, Yuba City, CA  
 OKITA, Todd T. & Dorothy M. (Kaiharu), Denver, CO  
 OKUBO, Tom T. & Sue (Ogata), Sacramento, CA  
 OKUNO, Joe & Nuiko (Kinoshita), Los Altos, CA  
 OKUNO, Takeshi B. & Kiku, Alhambra, CA  
 OKURA, Yoshiro & Irene Y. (Hiraga), Los Angeles, CA  
 OMOTO, Mits & Miyo (Washizu), Sacramento, CA  
 ONWELLER, Robert & Hideko J. (Togami), Albany, CA  
 ORITE, Ray R., Sacramento, CA  
 OSHIKA, James & Kumiko, Allen Park, MI  
 OSHIMA, Alan & Yuki, El Macero, CA  
 OSHIMA, Enney, Sacramento, CA (Guest of Izumi, Misao)  
 OSHITA, Jack & Chiyoko, Rockford, IL  
 OTA, Hitoshi & Keiko, Sacramento, CA  
 OTA, Kiyoshi K. & Pat, San Mateo, CA  
 OTA, Mas & Yuki (Tateishi), Sacramento, CA  
 OTA, Robert Y. & Toshiko (Menda), Potomac, MD  
 OTA, Tomi, Sacramento, CA  
 OTA, Tsutomu & Jean, Sacramento, CA  
 OTSUJI, Kay K. & Jane N. (Tanabe), Los Angeles, CA  
 OTSUJI, Kiichiro & Elsie (Yagi), Seattle, WA  
 OTSUKI, Henry & Kiyo T. (Tate), Livermore, CA  
 OWADA, John M., Salt Lake City, UT  
 OWADA, Saburo S. & Miki (Miyaoka), Denver, CO  
 OZAKI, Mas & Chiyeko (Togami), Mount Vernon, WA  
 RADAM, Judy (Guest of Morikawa, Mary)  
 ROGERS, Kiku E., Stockton, CA  
 RYUGO, Kikuji K. & Grace, Sacramento, CA  
 SAITO, Harry K., Santa Clara, CA  
 SAITO, Ken & Aiko, Palo Alto, CA  
 SAITO, Ko, Palo Alto, CA  
 SAITO, Masao & Sumi (Shirasago), Sacramento, CA  
 SAKAI, Hiroshi & Lilly (Tanouye), West Sacramento, CA

SAKAMOTO, Akiye, Sacramento, CA  
 SAKAMOTO, Shig, Sacramento, CA  
 SAKITA, George & Jean (Iwasaki), Federal Way, WA  
 SAKURAI, William & Yuki (Toya), Los Angeles, CA  
 SANBONGI, Fred & Yoshiko (Moriya), Sacramento, CA  
 SASAKI, Kikue (Shintaku), Yuba City, CA  
 SATO, Alwin M. & Tomi (Masaki), Sacramento, CA  
 SATO, Arthur & Ikuko, Sacramento, CA  
 SATO, Sho & Masa, Kensington, CA  
 SATO, Stanley & Edith, Sacramento, CA  
 SATOW, Betty K. (Kataoka), Sacramento, CA  
 SATOW, Lily (Higuchi), Sacramento, CA  
 SETO, Joe & Rose S., Sacramento, CA  
 SETO, Masa & Hideko (Nakazawa), Sacramento, CA  
 SETO, Louis, Sacramento, CA  
 SHIBATA, Tony T. & May (Nakagawa), San Mateo, CA  
 SHIMADA, Fumi, San Francisco, CA  
 SHIMADA, George S. & Kathleen (Sonoda), San Jose, CA  
 SHIMADA, Joe & Natsuko (Kawano), Berkeley, CA  
 SHIMADA, Ross & Sachi, San Jose, CA  
 SHIMAZU, Shig H. & Mary M., Sacramento, CA  
 SHIMODA, John & Betty, Corte Madera, CA  
 SHIRAI, Noboru R., Sacramento, CA  
 SHIRASAGO, Fred F. & Kate (Ozawa), Sacramento, CA  
 SOFYE, Tane, Sacramento, CA  
 STANTON, Dorothy (Nakagawa), Olivehurst, CA  
 SUGIYAMA, Grace S., Sacramento, CA  
 SUGIYAMA, Henry I. & Margo (Sofye), Sacramento, CA  
 SUGIYAMA, William M., Tacoma, WA  
 SUGURO, Aiko, Los Angeles, CA  
 SUGURO, Ed T., Seattle, WA  
 SUGURO, Toshi, Los Angeles, CA  
 SUKIKANE, Hayato & Chiyoko (Kawaguchi), Menlo Park, CA  
 SUMI, Lillian T. (Murakami), Los Angeles, CA  
 SUMI, Yoichi, Gardena, CA  
 SUMIDA, Tatsuo & Yoko  
 SUYEHIRO, George S. & Emi, Sunnyvale, CA  
 SUZUKI, George & June, Bethesda, MD  
 SUZUKI, George & Ruby (Tanabe), Loomis, CA  
 TACHIBANA, Keiko K. (Saito), Sunnyvale, CA  
 TAKAHASHI, Hiroshi & Shizuye, Sacramento, CA  
 TAKAHASHI, Tazu W. (Washino), San Mateo, CA  
 TAKAI, Larry & Barbara, Sacramento, CA  
 TAKAHASHI, Yoshie, Aiea, HI  
 TAKATA, Tom S. & Rose (Ishimoto), Sacramento, CA  
 TAKEHARA, Tom & Toshi (Matsuhara)  
 TAKEMOTO, Ken G. & Eiko (Kosai), Detroit, MI  
 TAKESHITA, Ben & Fumiko, Richmond, CA  
 TAKETA, Henry & Sally, Sacramento, CA  
 TAKEUCHI, Kenji & Grace (Matsune), Stockton, CA  
 TAMAI, Ted T. & Betty (Matsuo), Sacramento, CA  
 TAMANO, Kiyoshi K. & Masaye (Abe), West Sacramento, CA  
 TAMURA, Alvin & Teresa, San Jose, CA  
 TANAKA, Edith K. (Itano), San Francisco, CA  
 TANAKA, Harry & Margaret (Adachi), Lodi, CA  
 TANAKA, Tosh & Kiyo (Kagiyama), Sacramento, CA  
 TANAKA, Kiyoshi, San Francisco, CA  
 TANAKA, Shigeyoshi, Sacramento, CA  
 TANAKA, Shizuo S. & Nancy (Najima), Hayward, CA  
 TANAKA, Minoru & Violet (Ozawa), San Francisco, CA  
 TANAKA, Tatsuo, Gardena, CA



TANIGUCHI, Hitoshi & Taeko (Hoshiwara), Seattle, WA	YAMAHATA, Kyu & May, Los Angeles, CA
TATEISHI, Stanley K. & Grace (Yamamoto), Sacramento, CA	YAMAICHI, Jimi & Eiko (Tanaka), San Jose, CA
TAURA, Masayasu B. & Martha, Chicago, IL	YAMAMOTO, Fusako & Masa, Sacramento, CA
TERADA, Nobukazu N., Chicago, IL	YAMAMOTO, Haruo & June (Wada), Lomita, CA
TOGAMI, Avis, Albany, CA	YAMAMOTO, Hifumi & Ikuko, Los Angeles, CA
TOGAMI, Kenji, Berkeley, CA	YAMAMOTO, Sam T. & Sumiko (Maruyama), Sacramento, CA
TOKI, Masato T. & Mary, San Francisco, CA	YAMAMURA, Hiroshi, Monterey, CA
TOKUBO, Tom T. & Toshiko (Iwamoto), Sacramento, CA	YAMAMURA, Yaeko, Loomis, CA
TOYAMA, Toshi N. (Ikeda) & Evan, Sacramento, CA	YAMANAKA, Les, Hilo, HI (Guest of Matsunaga, Shig)
TSUCHIYA, George K. & Mariye (Yamaguchi), Oakland, CA	YAMANE, Michi (Nishino), San Leandro, CA
TSUDA, Alice, Sacramento, CA	YAMAOKA, Tony & Violet S. (Fujii), Gardena, CA
TSUDA, Motoo & Yoshimi (Kimoto), Sacramento, CA	YAMASAKI, Bill M., El Cerrito, CA
TSUGAWA, Dub & Mary S. (Nakashima), Sacramento, CA	YAMASAKI, Edith Y. (Fujikawa), Garden Grove, CA
TSUJIMOTO, Irene (Shimada), San Francisco, CA	YAMASAKI, Fred & Ruby, San Francisco, CA
TSUJISAKA, Stan & Kiko, San Francisco, CA	YAMASAKI, Joe S., Albany, CA
TSUKIJI, Mary (Sonoda), Sacramento, CA	YAMASAKI, Mas, Fremont, CA
TSUKIJI, Ted T. & Gerry (Nakano), Sacramento, CA	YAMASAKI, Shin S., Portland, OR
TSURUI, Fumi, Seattle, WA	YAMASHITA, Skip & Terry (Togami), El Cerrito, CA
URUSHIBATA, Kunio, El Cerrito, CA	YAMAUCHI, Gloria (Yamanaka), San Mateo, CA
UYEDA, Charles T. & Sumi (Maeda), Mountain View, CA	YANO, Roy Y. & Margaret (Tsuda), Sacramento, CA
UYEDA, Jim I. & Patricia, Larkspur, CA	YASUDA, Saburo & Clara (Muranaka), El Sobrante, CA
UYEMATSU, Rose, (Fujikawa), Anaheim, CA	YASUTAKE, George T. & Alice S. (Nakashima), Seattle, WA
WAKAYAMA, Gerry M. & Mary (Shimoda), Salt Lake City, UT	YATSU, Koro & Miyo (Otani), Richmond Heights, OH
WARDEN, John & Michiko (Hyogo), Cypress, CA	YEGO, Jean M. (Nakatani), Sacramento, CA
WASHIZU, Takae, Sacramento, CA	YOKOTE, Shigeo & Rose K. (Takuma), Loomis, CA
WATANABE, Louise C. (Nakagawa), Sacramento, CA	YOKOYAMA, Harry M. & Aya, West Sacramento, CA
WATANABE, Robert M. & Rose, Sacramento, CA	YOSHIDA, Eiichi & Fusae (Fujii), Hayward, CA
WATANABE, Terry M. & Helen (Tanaka), Gardena, CA	YOSHIMI, Mary, Long Beach, WA
YAGAWA, Salem, Los Angeles, CA	YOSHIMIYA, Tim, Sacramento, CA
YAGI, George & Chieko (Fujii), Sacramento, CA	YUKE, Rita (Nikaido), Sacramento, CA
YAMABE, Don K. & Lillian (Goishi), Sacramento, CA	YUKINAGA, Rudy & Barbara (Goi), Sacramento, CA
YAMADA, Tosh, Sacramento, CA	YUMIKURA, Eddy & Nori, Sacramento, CA

---

## TULELAKE REUNION 1985

IT IS FOR US, TULELAKERS, A TIME TO FORGIVE AND PERHAPS  
TO FORGET THE PAIN, THE ANGER, THE FRUSTRATION AND THE  
BITTERNESS OF SOME FORTY ODD YEARS AGO.

IT IS NOW THE TIME FOR JOY, FOR LAUGHTER AND FOR  
CAMARADERIE. IT IS ALSO THE TIME TO REMINISCE AND TO  
SHARE WITH OUR FRIENDS.

THE TIME WILL PASS, AS WILL OUR REUNION. BUT FOR THE  
FUTURE, IT WILL BE THE TIME FOR HOPE AND FOR FAITH, THAT  
SOME DAY WE WILL MEET AGAIN.



# SUPPLEMENTAL REGISTRANTS

Akiyama, Toshiko (Nasu), Sacramento, CA  
 Aoki, George & Sakaye (Ishihara), Woodland, CA  
 Arai, Hiroto, Richmond, CA  
 Enomoto, Jerry J. & Dorothy, Sacramento, CA  
 Fujii, Toko & Sayoko, Sacramento, CA  
 Fujikawa, Masao & Toshiye (Masaki), Sacramento, CA  
 Fujitani, Frank & Kay (Uyehara), Hayward, CA  
 Goi, Frank & Tessie (Sato), Sacramento, CA  
 Goi, George & Meg, Sacramento, CA  
 Guilday, Abu (Keikoan), Sacramento, CA  
 Hamatani, Masako (Kubo), Sacramento, CA  
 Harada, Fred K. & Lou, Montebello, CA  
 Hashimoto, Ted & Dorothy S. (Sakaeda), Monterey Park, CA  
 Hirai, Yoshio & Joyce  
 Hiromoto, George H., Clarksburg, CA  
 Hironaka, David T. & Yo, San Francisco, CA  
 Hitomi, Kenji R. & Takako (Yoshikawa), Sacramento, CA  
 Horiba, Yumiko, San Jose, CA  
 Ikeda, Frank & Helen, Sloughhouse, CA  
 Ikeda, Muroko M., Sacramento, CA  
 Imai, Fred, Sacramento, CA  
 Ito, Paul T. & Shizue, Sacramento, CA  
Itogawa, Eugene & Jane (Hashizaka), Sacramento, CA  
 Iwafuchi, Kiyo, Gardena, CA  
 Kamikawa, May  
 Kawano, James & Jean, Sacramento, CA  
 Keikoan, Shoji H., Sacramento, CA  
 Keunji, Nob & Arlene Tanimoto, Sacramento, CA  
 Kido, Hiroshi & Thelma, Davis, CA  
 Kimura, Utako, Sacramento, CA  
 Kinoshita, Haru (Ogawa), San Francisco, CA  
 Kitazumi, Calvert & Betty, San Francisco, CA  
 Kiyama, Glenn I. & Suzuye, Chula Vista, CA  
 Kiyama, Tony, Sacramento, CA  
 Kono, Jane K., Sacramento, CA  
 Kurotori, Tom T. & Masako A. (Kajiura), Sacramento, CA  
 Kushida, Aki & Lillian (Tanihana), Sacramento, CA  
 Kyono, Mas & Pat (Kitazumi), Oakland, CA  
 Machida, Linda, Los Angeles, CA  
 Masaki, Akito & Emi, Sacramento, CA  
 Masaki, Amy (Yamada), Sacramento, CA  
 Masuniya, Amy (Bishari), Stockton, CA  
 Masuoka, Noboru & Chiyeko, Sunnyvale, CA  
 Masuoka, Takashi, Sunnyvale, CA  
 Matsumoto, William M., Sacramento, CA  
 Mayeda, Ted & Asako, Oakland, CA  
 Menda, Frank & Hanaye, Sacramento, CA  
 Mitsutome, Yoichi A. & Grace (Manji), Hayward, CA  
 Miyakawa, Agnes H. (Shigeno), Sacramento, CA  
 Miyamura, Kay K. & Martha (Endo), Penryn, CA  
 Miyashima, James & Amy (Masuda), Sacramento, CA  
 Mizumoto, Eiichi & Michiko (Nakagawara), Seattle, WA  
 Morimitsu, Arthur T., Chicago, IL



Nagai, Hisashi & Lily (Kuroko), Sacramento, CA  
Nakagawa, Hank & June, San Carlos, CA  
Nakahiro, Atsuko. (Tate)  
Nakata, Roy & Marie, Sacramento, CA  
Nakawaki, Darrell, Yorba Linda, CA  
Noda, Newell, Oakland, CA  
Oda, Henry, Sylmar, CA  
Ogawa, Joji & Shigeko, Walnut Grove, CA  
Okada, Eugene, Sacramento, CA  
Okamoto, Aaron & Haruye (Ogata), Sacramento, CA  
Okasaki, Frank T., Sacramento, CA  
Oshima, Keiso, Montebello, CA  
Oto, Earl & Jean (Yamasaki), Sacramento, CA  
Oto, Yoshio G. & Edith (Tanita), Oakland, CA  
Otsuji, Fred & Takako, San Jose, CA  
Otsuki, Henry & Kiyo T. (Tate), Livermore, CA  
Oyama, Joseph T. & Asami, Hayward, CA  
Sakai, Howard & Frances H. (Abe), Clarksburg, CA  
Sakazaki, Hideko, Clarksburg, CA  
Sako, Mike, Culver City, CA  
Sasagawa, Bill & Susan S. (Tanaki), Sunnyvale, CA  
Seno, Alvin & Toyoko (Mizobe), Sacramento, CA  
Shimada, Fumi, San Francisco, CA  
Sugihara, Mas & Pat, Garden Grove, CA  
Sugiyama, Arthur J., Sacramento, CA  
Sugiyama, Elaine K. (Sadanori), Sacramento, CA  
Sumida, Tets & Sumi W. (Washino), Palo Alto, CA  
Sumida, Tats & Yoko, San Francisco, CA  
Takahashi, Thomas T. & Hiroko, Sacramento, CA  
Takai, Larry N. & Barbara M., Sacramento, CA  
Takehara, Tom & Toshi (Matsuhara), Sacramento, CA  
Tambara, George & Toshi (Sato), Sacramento, CA  
Tokuno, Shiro & Asako (Maida), Sacramento, CA  
Tokushige, Victor & Peggy C. (Tsuchida), San Jose, CA  
Tsuchiya, George K. & Mariye (Yamaguchi), Oakland, CA  
Uohara, George & Ardene (Kitazumi), Orinda, CA  
Uwate, Matao & Aiko (Nishi), Los Angeles, CA  
Uyehara, Hatsuye S., Sacramento, CA  
Yagi, Alice (Ikeda), Sacramento, CA  
Yamaichi, Richard & Sally (Kikumoto), Sacramento, CA  
Yokota, Ai, Sacramento, CA  
Yotsuya, Edith K. (Goi), Turlock, CA  
Fujii, Masato, Sacramento, CA  
Miyamura, Yoshito & Grace (Sakai), Sacramento, CA



## COMMITTEES

### 1. HOSPITALITY

Hospitality Room will open starting on Friday afternoon with food and drinks to be served (free, of course) to all participants. The Hospitality Room will remain open until the wee hours of the morning. The co-chairpersons are Teiko (Ishihara) Matsuo and Mary (Nakashima) Tsugawa.

### 2. EXHIBITS

Eugene Itogawa, as Chairperson, has gathered pictures, documents, and other articles exhibited in a special room during the reunion.

### 3. MIXER

Mixer will be dinner with entertainment (by our very own talented Tulelakers), contests, singing and dancing. Music will be provided in part by the "Downbeats" (remember them in Tule?). Ruby (Masuda) Matsuhara and Hideko "Deki" (Nakazawa) Seto are going to make sure attendants for this reunion will have a good time.

### 4. PICNIC

Our picnic is being held in conjunction with the annual Sacramento Japanese Community Picnic at Elk Grove Park. The committee, chaired by Joey Ishihara, will have a "bento" with beverages, fruits in season, etc. The activities are games, contests, free bingo, races, and just plain relaxing.

### 5. SAYONARA BANQUET AND DANCE

The banquet and a band to dance and listen to will conclude our reunion. Chairperson Starr Miyagawa and his committee have planned a program that everyone present will enjoy and make it a memorable reunion.

### 6. OTHER COMMITTEES AND CHAIRPERSONS

- A. **Registration** - Reunion Nerve Center - Chieko (Fujii) Yagi & Sam Tsugio Yamamoto
- B. **Publicity** - Information Center - Toko Fujii
- C. **Finance** - No Income, No Loss - Tsutomu Ota
- D. **Transportation** - Our Highway Safety Engineer - Frank Hiyama
- E. **Souvenir Booklet** - Something to Keep - Yoshiko (Moriya) Sanbongi & Miyo (Washizu) Omoto
- F. **Continental Breakfasts** - To Start the Days - George Imai
- G. **Tours** - Reno (Gamblers Special) and Wine Country - Mary (Abe) Shimazu
- H. **Golf** - The Big Swingers - Ed Yumikura and Shig Sawamura
- I. **Tickets and Printing** - For a Big Crowd - Howard Matsuhara
- J. **Out-of-Towner Coordinator** - The Big Move to Sacramento - Hideko "Deki" (Nakazawa) Seto
- K. **General Chairman** - Unanimously Chosen - Tom Fujimoto