

1944

*The*

MEMOIRS







This MEMOIRS is the property of

COOMBS

Hunt High School

1944

Hunt, Idaho

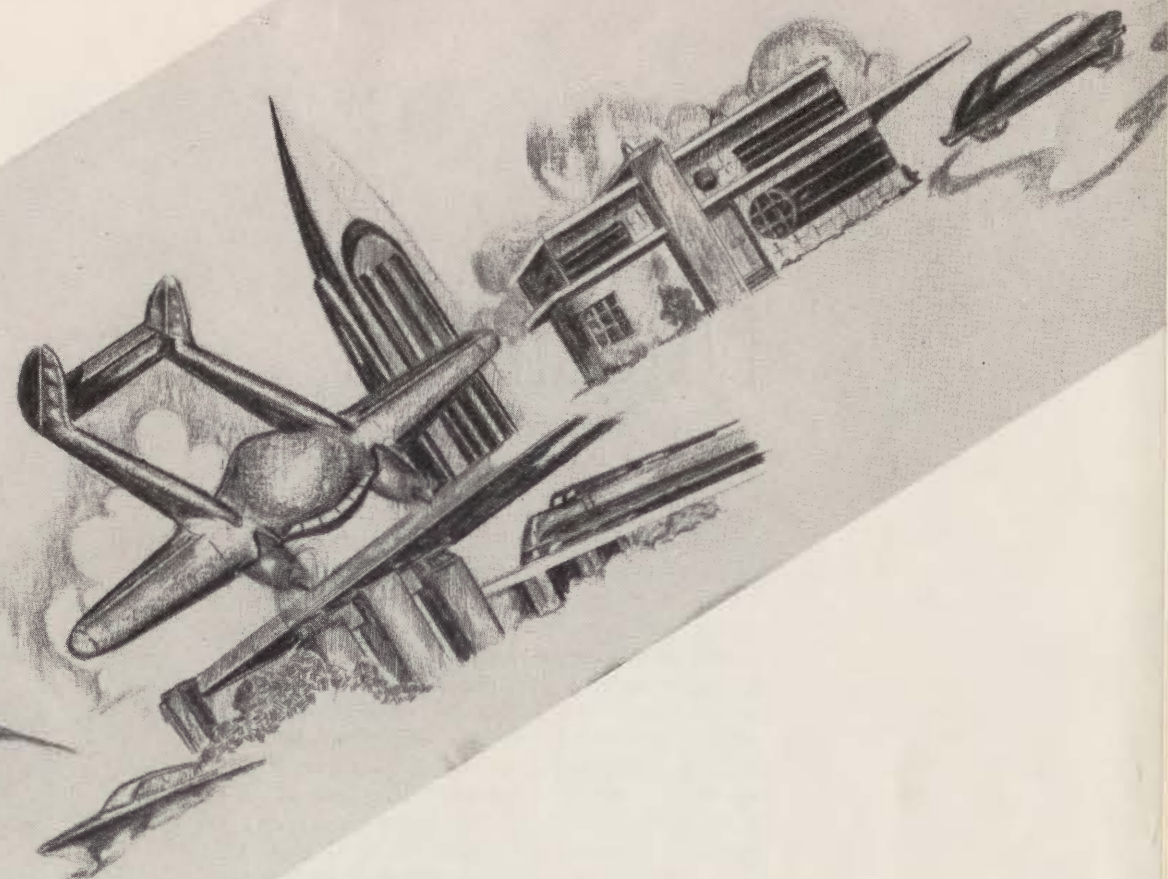
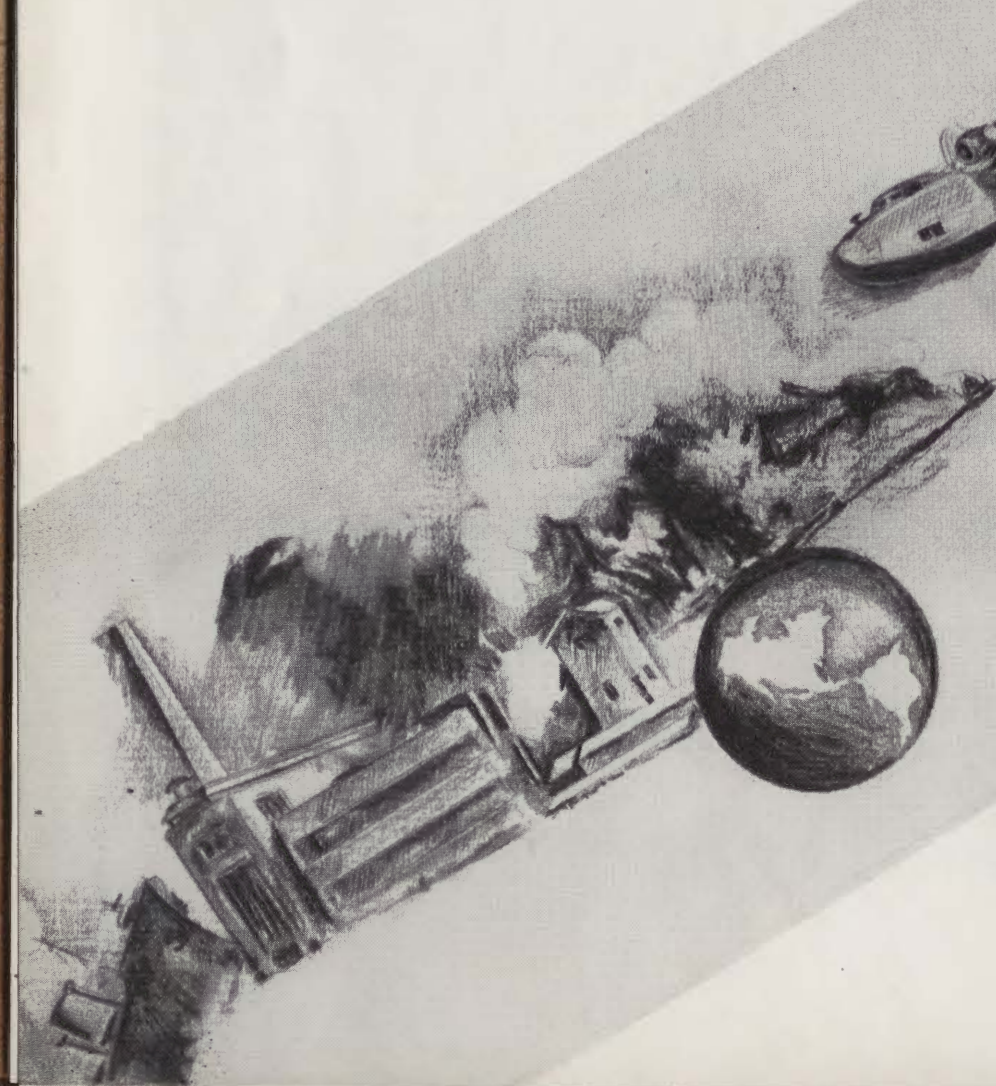




**MEMOIRS 1944**  
**HUNT HIGH SCHOOL**  
*Volume II*  
**HUNT, IDAHO**



# Modern Pioneers ★ ★ ★



## A Word ★ ★ ★

The theme of any book is the core of that book. It is the beautiful, dominating strain of a wondrous musical creation—it is the heart and soul of a brave book—it is the fulcrum which lifts mediocrity to a superlative pinnacle.

The theme of this pictorial chronicle of the past school year—the HUNT MEMOIRS of 1944—is a theme based on the growing realization that we modern American pioneers have a manifest destiny—that of creating from the ruins of our present chaotic state, the fundamental structure of a peaceful world.

By words and artistic conveyances, then, we present to you the 1944 MEMOIRS and invite you to view that free American educational process which will create fine world citizens who can, in the face of disappointment and constant adversity, reply to humanity's 20th Century challenge with a clear and affirmative answer.



# FOREWORD

The formidable, natural frontiers have disappeared with the advent of a progressive and an ever complex world society. Yet, the seemingly innate quality of pioneering still remains with Americans everywhere because new barriers have appeared together with our cultural advancements. Primary and foremost of these so-called barriers is the forming of a durable and permanent world government from the shambles of our current global upheaval. It is a challenge that is facing mankind everywhere—a challenge specially implicating and directed at the men and women of tomorrow . . . today's youth. Modern pioneers . . . as it may be . . . whose resourcefulness will be sorely tested in meeting the greatest challenge of our 20th Century. But when the time comes for the whole of the world's youth to answer this arduous challenge, we modern American pioneers will be able to go forward—confident—for, we are blessed with the tools gained from the fruitful application of our free American educational systems and from the common daily living in a virtuous and vibrant free society.

In the succeeding pages of this volume, we wish to depict through the medium of a comprehensive pictorial review, the application of that educational system which will prepare our nation's youth to meet the challenge that beckons them on.

# CONTENTS

ADMINISTRATION

CLASSES

HONORS

PUBLICATIONS

ORGANIZATIONS

SPORTS

SCHOOL LIFE



## DEDICATORY WORDS

Grim, aged, worn against the horizon stand two somber figures gazing at the distant future, but still perhaps, yearning for those bygone, trying but satisfactory years. Many moons have passed since they, as youths, set foot upon these shores straight and vigorous. But, alas, the hardships of poverty, labor, humiliation have made them bent and old. What courage it must have required to cross a vast ocean to an unknown land, ignorant of the nature of the people, language, conditions they must face. What sufferings they must have endured overcoming their many obstacles, to make their way in this land. Now as the day is declining in their lives and their sunset is rapidly approaching, it remains for us to carry on, and make ourselves worthy of the sacrifices they, our parents, have made for us. So let us face tomorrow with confidence born out of determination and prepare to carve a place for ourselves and make our destiny.

## DEDICATION...



The dark hair has turned white . . . the once smooth, youthful hands are aged and wrinkled . . . the clear, innocent faces of long ago are creased with the experiences of life. Such seems to be the destiny of our alien parents who came, with adventuring hearts, to America a few decades ago. They came to America to give to their children, you and me, the common advantages of life that they, themselves, never enjoyed. And now, as they approach the end of life's highway, from their faltering hand they yield their torch of life which symbolizes their seemingly perennial pioneering spirit. Imbued with such a pioneering heritage, we shall surely light our way through this momentary chaos to a haven in a post-war America. To them, then, to our mothers and fathers, who have endowed us with such a glorious heritage and who have guided us on the paths of righteousness during these turbulent times, we proudly . . . and gratefully dedicate this Hunt MEMOIRS of 1944.



# ADMINISTRATION







## ADMINISTRATORS

ARTHUR KLEINKOPF

*Supt. of Education*

Hunt Project Schools

### Superintendent's

## Message . . .

Man is largely the master of his own destiny. Each by his own deeds and thoughts carves his niche in the universe. Some find the road easy; others find the pathway strewn with thorns. Sublime heights are seldom attained, however, without struggle, sacrifice, and an occasional disappointment and sorrow. The pioneers of old faced the physical dangers of an unknown nature when they ventured forth to carve new homes in the wilderness. This they did with unflinching courage, abiding faith, and a determination that refused to admit defeat. Modern pioneers face a world of conflicting ideas, many false philosophies, intolerance, and greed. To battle these, will require the same kind of courage, faith, and determination as were possessed by the pioneers of old. The world must be made a safe and happy place for future generations, and the modern pioneers must face the issues squarely and ever strive toward that end. Thus, they will help build the ideal state of tomorrow.

ARTHUR KLEINKOPF,  
*Superintendent*

### Principal's

## Message . . .

The American democratic tradition is based upon ideals and traits displayed by pioneers. The traditions of some other countries seem to be based on old established customs which tend to prevent improvements when needed and to stifle initiative and freedom of enterprise. The staff of Hunt High School has set itself the ultimate goal of developing in its pupils the ideals, habits, and personal traits which will best enable them to adhere to the American democratic tradition. It feels that this is the most important goal to be pursued in any American high school.

I sincerely feel that if we can stimulate and guide you to strengthen yourselves in the characteristics of modern pioneers, we also will be doing a job of modern pioneering.

JEROME T. LIGHT,  
*Principal*



JEROME T. LIGHT

*Principal*

Hunt High School

### Vice-Principal's

## Message . . .

The pioneering spirit has characterized the progress of man throughout history. We are ever mindful of the past that the frontiersmen played in conquering the savage frontiers in American history. To those men and women we owe our democratic institutions—our American way of life. The memory of those men and women who carved this great nation out of the wilderness will never be forgotten.

Today, man is conquering new and different frontiers—the intellectual, social, scientific, political and economic. We are desperately struggling to conquer our common enemies in the hope that totalitarian ideologies will be forever banished from the earth. These new frontiers are more difficult to conquer. Modern pioneers have a tremendous task ahead. Let us re-dedicate our lives to aid these men and women in their everlasting fight for the preservation of the **FOUR FREEDOMS**.

The memory of the modern pioneers who are carving out of the "wilderness of thought" new aspirations for a respectable world in which man may live in peace, happiness and cooperation, will never be forgotten. To the modern pioneers we owe the preservation of our American way of life.

RAYMOND HARKER,  
*Vice-Principal*



RAYMOND HARKER

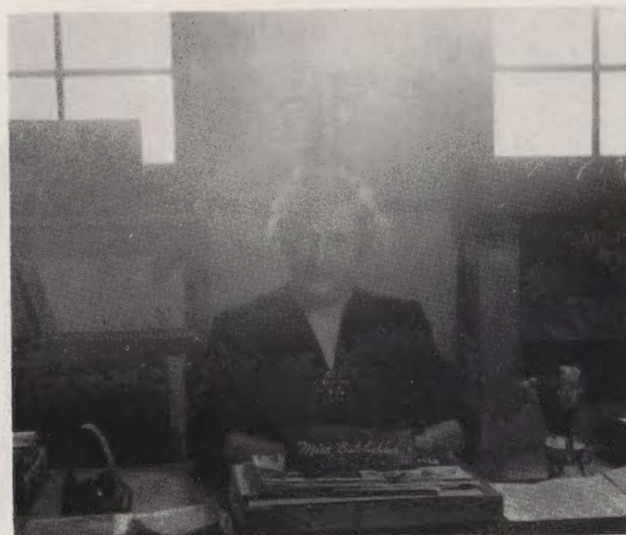
*Vice-Principal*

Hunt High School





MISS HELEN E. AMERMAN  
Guidance Officer  
Hunt High School



MISS BERNICE BATCHELDER  
Student Teachers Supervisor  
Hunt High School



YOSHI ASABA  
Secretary



AIKO HORII  
Clerk



VIOLET MASUHARA  
Clerk - Sec'y

## OFFICE WORKERS

The hustling and bustling of busy people is a common spectacle in the guidance office and principal's office for they are the hub or nerve center of our school. Teeming with activity, both offices have a great deal to do in helping to make our school a smooth running machine. Hunt High School fortunately has capable persons who know their work thoroughly in these key positions. Although the luxurious furnishings and other accessories of our former high schools are missing, the all important administrative work is carried out in the same efficient manner.

The guidance department plays no small part in aiding the students to plan their programs and to expand the curriculum so as to provide them with the necessary knowledge and experience to meet the demands of this modern age. The office staff, in addition to their regular duties, has always been willing to help students in making out requisitions, special bulletins, and other matters pertaining to school activities. To them, we give a much deserved pat on the back for the effective and competent manner in which they help manage our school.



KIMI TANAKA  
Clerk



SHUIKO SAKAI  
Secretary



TOSHIKO TANABE  
Clerk

## FACULTY

AKIYAMA, JESSIE  
Parkdale, Oregon  
Asst. teacher, Home Ec.

AKIYAMA, TAKESHI  
Seattle, Washington  
Asst. teacher, Physical Ed., Baseball Coach

ARIMA, YURIKO  
Auburn, Washington  
Asst. teacher, Home Ec.

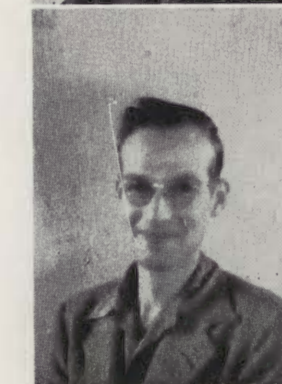
ASKEW, MARGUERITE  
Brookings, South Dakota  
Univ. of South Dakota, B.A., M.A.  
Spanish, French

BARBER, MAX  
Council Grove, Kansas  
Kansas State College, B. S.  
Chemistry, Physics, Gen. Science, El. Geometry

CLINE, GWENDOLYN  
Liberal, Kansas  
Oklahoma State College, B.S.  
Core 9, Present Day Lit., Speech Lab.

COOMBS, ROBERT  
Sacramento, California  
Stanford University, B. A.  
Core 11, Core 9, Pub. Speaking, Journalism

CORKILL, MARGUERITE  
Oklahoma City, Oklahoma  
Knox College, B.S.; Iowa St. College, M. S.  
Home Economics





## FACULTY



**CUTKOSKY, OSCAR**  
Minneapolis, Minnesota  
University of Minnesota, B. S.,  
M.A., Ph. D.  
Vocational Work Supervisor

**FICKE, ARTHUR B.**  
Moscow, Idaho  
Univ. of Idaho, M.A., B.S.  
Agriculture



**FLEISCHMAN, CHARLES**  
Boise, Idaho  
Northern St. Teachers College, B.S.  
General Shop

**FROST, MARGARET**  
Lawton, Oklahoma  
Oklahoma College for Women,  
B.A.  
Core 8



**GILMORE, ELLEN M.**  
Barton, North Dakota  
Univ. of North Dakota, B.S.  
Core 10, Pub. Speaking, Library

**GLENN, EUNICE**  
New York, New York  
Scarritt College, B.A.; Louisiana  
St. Univ., M.A.  
Core 7



**GONNERMAN, KATIE**  
Hurland, Missouri  
Missouri St. Teachers College,  
B.S.; Univ. of Missouri, M. S.  
Core 10, Core 11

**GWINN, ALICE**  
Garfield, Washington  
Heartford School, Master of Re-  
ligious Ed., Univ. of Washington,  
M.A.  
Core 8

## FACULTY



**HAGLUND, FRANCES**  
Cannon Falls, Minnesota  
Univ. of Minnesota, B.S., M.S.  
Chemistry, Biology, Algebra

**HARAGUCHI, FUMI**  
Portland, Oregon  
General Art



**HERNDON, ELLEN**  
Upland, California  
Univ. of Arizona, B.A.; Columbia  
Univ. M.A.  
Core 12

**HINES, MARIBELLE**  
Cape Girardeau, Missouri  
Missouri St. Teachers College,  
B.S.; Univ. of Iowa, M.A.  
Shorthand, Typing



**HORIUCHI, EDWIN**  
Seattle, Washington  
Asst. teacher, Typing

**HOSHIDE, KIYOSHI**  
Tacoma, Washington  
Asst. teacher, Physical Ed.



**HUNT, ECCO**  
Cambridge, Idaho  
College of Idaho, B.A.; Berkeley  
Baptist Divinity School, M.A.  
Algebra, Geometry, Trigonometry

**IWATA, GEORGE**  
Portland, Oregon  
Oregon State College; Univ. of  
Utah  
Geometry, Algebra



## FACULTY



**JAEGER, WILLARD**  
**Arvada, Colorado**  
 Univ. of Colorado, B.A.  
 Biology, Gen. Science, Gen.  
 Mathematics, Pl. Geometry

**KAWASAKI, FRANK**  
**Sacramento, California**  
 Asst. teacher, Mechanical Arts



**KILLERLAIN, MARY**  
**Chicago, Illinois**  
 Clarke College, B.A.  
 Pl. Geometry, Arithmetic 8, Gen.  
 Mathematics, Arithmetic 7

**KIMURA, MINORU**  
**Clallam Bay, Washington**  
 Asst. teacher, Gen. Mathematics,  
 Pl. Geometry



**KURTIN, EDNA**  
**Aynor, South Carolina**  
 Univ. of South Carolina, B.A.; Pea-  
 body College, M.A.  
 Physical Ed. (presently a mem-  
 ber of the WACS)

**MATSUMOTO, BEN**  
**Seattle, Washington**  
 General Art



**McNARY, JESSIE**  
**Mitchell, South Dakota**  
 South Dakota Wesleyan, B.A.  
 Core 11

**MULLINS, ELEANOR**  
**Moscow, Idaho**  
 Univ. of Idaho, B.S., M.S.  
 Core 9

## FACULTY

**PEAVEY, BETTY**  
**Twin Falls, Idaho**  
 Univ. of Idaho, B.S.; Columbia  
 Univ., M.S.  
 Core 7

**POLLOCK, MARJORIE**  
**Stanley, Idaho**  
 Indiana U., B.A.  
 Core 10

**POMEROY, HARRIETT**  
**Boise, Idaho**  
 Univ. of California, B.A.  
 General Art

**ROTH, MORRIS**  
**Chisholm, Minnesota**  
 Univ. of Minnesota, B.S.  
 Physical Ed.

**SAKAMOTO, MASAO**  
**Seattle, Washington**  
 Nebraska State Univ.  
 Asst. teacher

**TAKAO, GEORGE**  
**Central Point, Oregon**  
 Univ. of Washington  
 Core 10, Biology, Algebra

**THARP, ELMA**  
**Palisade, Colorado**  
 Ottawa Univ. B.A., Master's Equiv-  
 alant  
 Core 10, Core 11

**VOLD, ELEANOR**  
**Grand Forks, North Dakota**  
 Univ. of North Dakota, B.A.  
 Home Economics





## FACULTY



**ERLANDSON, ERLING**  
 Malad, Idaho  
 St. Olaf College, B. Mus.  
 Music, Boys' Glee Club, Orches-  
 tra



**HORNE, JAMES**  
 Ross, North Dakota  
 North Dakota St. Teachers Col-  
 lege, B.A.; Univ. of Montana,  
 M.A.  
 Core 10



**LYDAY, FLORICE M.**  
 Arkadelphia, Arkansas  
 Univ. of Oklahoma, B.A.; Univ. of  
 Chicago, M.B.A.  
 Business Law, Bookkeeping, Ad.  
 Shorthand, Vocational Office  
 Practice, Distributive Occupa-  
 tions



**MAJOR, RUTH**  
 Pullman, Washington  
 Nebraska Wesleyan, B.S.; Univ.  
 of Minnesota, M.S.  
 Home Economics



**MARKHOLM, GENEVIEVE**  
 Minneapolis, Minnesota  
 St. Cloud Univ. B.A.  
 General Art (presently a mem-  
 ber of the Marines)

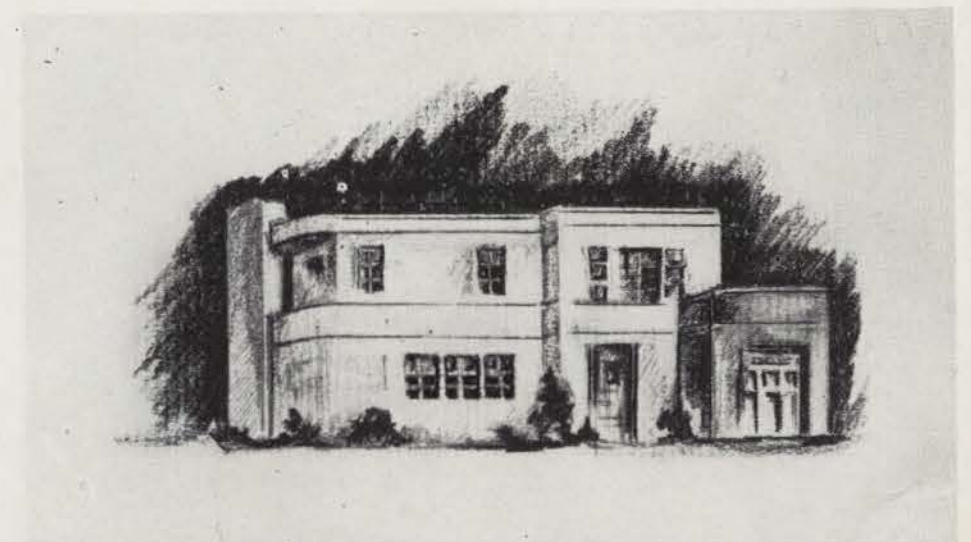


**PATTEE, ERMA**  
 Pocahontas, Iowa  
 Iowa St. Teachers College, B.A.  
 Gen. Mathematics, Arithmetic  
 7, 8



**PHIFER, HELEN**  
 Hendersonville, North Carolina  
 Meridith College, B.A.  
 Core 10, Core 12, French, Jour-  
 nalism

## SENIORS





# THE CLASS OF 1944

Climaxing four years of activities, athletics, and intensive studying, we are finally prepared to step forward into the future. Facing the future, we feel a twinge of hesitancy . . . but not for long, for we are eager to test the strength of our knowledge gleaned through four years of constant studying.

We will miss Hunt High; the assemblies; the socials; but we must tuck these memories into the farthest corners of our minds, for the successful fulfillment of our duty to ourselves, our parents, and our country, will take all of the strength and courage that we possess. We must regard our pleasant memories as past, to be called upon only when the need for comfort and solace arises.

During the years our faculty has sacrificed immeasurably to prepare us for the trials and tribulations that we must face. The need for courage and sacrifice is great in these trying times, and we modern pioneers must be ready, willing, and able to accept the responsibility for bettering this world. With this in mind, our faculty has aided us infinitely by instilling within us the qualities of tolerance, ambition, and most important, democracy.

We, the youthful pioneers of today, are entrusted with the successful attainment of the prosperity, good-will, and peace among the nations of the future. It is our duty, our goal, our trust. Let us vow, then, that we, the graduating class of 1944, will do our utmost to better the world; that the trust which has been placed in us will be fulfilled as we go, bold and unafraid, into a future filled with the promise of a great reward.

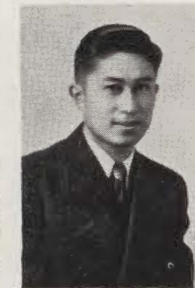
**WE WILL NOT FAIL!**



**Frank Muramatsu**  
President



**Shuzo Kato**  
Vice-President



**Eugene Uyeki**  
Vice- President



**Takashi Enkoji**  
Sec.-Treas.



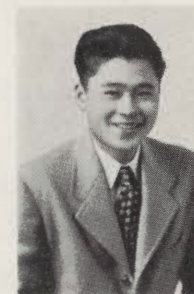
**Jane Kawamoto**  
Historian

## SENIOR CLASS

The senior class cabinet and council guided this year's graduating class to the successful conclusion of their last year at Hunt High. Their supreme bid for the social spotlight was represented by the "G. I. Jive" which was acclaimed one of the most successful dances of the season. Chairman Yoshiko Kitayama headed the various committees which resulted in a job well done. Lesser publicized senior socials and mixers were also successful.

Activities, too, received more than their usual share of attention. The Senior Day was merely one of the activities in which the seniors played a leading role. With the senior cabinet assuming administrative responsibilities, an all-day holiday was enjoyed by all concerned. The senior class sponsored May Day immediately following Senior Day which proved to be a great success. Complementing this holiday, the May Day Madcap was also successful despite numerous difficulties. Bringing down the curtain on their year of activities, the Senior Prom, Commencement exercises, and Commencement dance were the grand finale to their term of enjoyable experiences.

Although the final curtain has descended on their years in high school, another promising frontier is opening: the frontier of the future which the seniors must conquer with faith and courage.



**Mas Okada**  
Pub.-Mgr.



**Hitoshi Kanzaki**  
Pub.-Mgr.



**Mrs. E. Herndon**  
Adviser



**Mrs. H. Phifer**  
Adviser



## SENIOR COUNCIL

FIRST ROW—Daty, Anne; Kumata, Kikue; Kimura, Utako; Oda, Lillian; Fukui, Lucy; Kuramoto, Miyo; Kitayama, Yoshiko.  
SECOND ROW—Tanabe, Henry; Sako, Hiroshi; Tanaka, Frank; Murakami, Jack



## SENIORS

### AKIMOTO, BOB MINORU

Roosevelt High . . . Seattle, Wash.  
Boys' Cl.

### AKIMOTO, TOMIO

Lincoln High . . . Tacoma, Wash.  
Wolverines; A.S.H. Rep.; Varsity Baseball

### AKIYAMA, JESSIE

Girls' Polytechnic . . . Portland, Ore.  
Sr. Girls' Cl.; Girls' Cl.

### AKIYAMA, MARY

Girls' Polytechnic . . . Portland, Ore.  
Girls' Cl. Advisory Board; Sr. Girls' Cl.

### AKIYAMA, RUBY

Girls' Polytechnic . . . Portland, Ore.  
Sr. Girls' Cl.; Girls' Cl.

### AMANO, HERBERT

Franklin High . . . Seattle, Wash.  
Hi-Y; Mardi Gras; Sr. Mixer; Varsity Track



1944

### ANDOW, LILLIAN

Roosevelt High . . . Portland, Ore.  
Pen Cl. Pres. '44; Hi-Lites Ed. '44

### ARASE, TETSUO

Garfield High . . . Seattle, Wash.  
Honor Soc.; Debate Cl.; Science Cl.

### ARAKAWA, MAY

Broadway High . . . Seattle, Wash.  
Sr. Girls' Cl.; Girls' Cl.

### ASAHARA, JOE

Sumner High . . . Sumner, Wash.  
Varsity Baseball; Wolverines

### ASAKAWA, BEN

Gresham Union . . . Gresham, Ore.  
Boys' Cl.

### CHIHARA, MARY

Bainbridge High . . . Bainbridge, Wash.  
G.A.A.; Sr. Girls' Cl.; Girls' Cl.

### CHIHARA, TOKUO

Bainbridge High . . . Bainbridge, Wash.  
Boys' Cl.

### DATY, ANNE

Garfield High . . . Seattle, Wash.  
Jr. Class Sec.-Treas. '44; Sr. Pin; Mardi Gras; Record Cl.; Sr. Prom.

### DEGUCHI, YOSHIKO

Broadway High . . . Seattle, Wash.  
Sr. Girls' Cl.; Girls' Cl.



## SENIORS

### DOI, KIYOMI

Broadway High . . . Seattle, Wash.  
Sr. Girls' Cl.; Girls' Cl.

### EBIHARA, GRACE

Lincoln High . . . Portland, Ore.  
Science Cl.; Sr. Girls' Cl.; Girls' Cl.

### EHAMA, GEORGE

Roosevelt High . . . Portland, Ore.  
Boys' Cl.

### ENDO, AKIKO

Milwaukie Union . . . Milwaukie, Ore.  
Sr. Girls' Cl.; Girls' Cl.

### ENKOJI, TAKASHI

Benson Polytechnic . . . Portland, Ore.  
Sr. Class Sec.-Treas. '44; Science Cl.; Sr. Pin; Jr. Council Rep.; Mardi Gras; May Day Madcap

### FUJII, HEIDI

Broadway High . . . Seattle, Wash.  
Boys' Cl. Pres.; Hi-Y Historian; Wolverines;  
Memoirs Art Ed. '44



1944

### FUJII, SAKAE

Bainbridge High . . . Bainbridge, Wash.  
Sr. Girls' Cl.; Girls' Cl.

### FUJIMOTO, EDDIE

Broadway High . . . Seattle, Wash.  
Boys' Cl.

### FUJIMOTO, ROY

Broadway High . . . Seattle, Wash.  
Art. Cl.; Boys' Cl.

### FUJITA, SUMI

Milwaukie Union . . . Milwaukie, Ore.  
Spanish Cl.; Sr. Girls' Cl.; Girls' Cl.

### FUKUI, LUCY

Stadium High . . . Tacoma, Wash.  
Sr. Council Rep.; Jr. Council Rep.; Sr. Pin

### HAGA, NAOKO

Broadway High . . . Seattle, Wash.  
Chr. Jr.-Sr. Mixer; Jr. Class Bus. Mgr.; Yell Lead-  
er; Mardi Gras

### HAMADA, MARY

Auburn High . . . Auburn, Wash.  
Record Cl.; Sr. Girls' Cl.; Girls' Cl.

### HAMADA, MASARU

Broadway High . . . Seattle, Wash.  
Boys' Cl.

### HARA, RODERICK

Franklin High . . . Seattle, Wash.  
Wolverines; Boys' Cl.





## SENIORS

### HATA, WILLIAM

Garfield High . . . Seattle, Wash.  
Boys' Cl.

### HAYASAKA, YOSHIRO

Franklin High . . . Seattle, Wash.  
Boys' Cl.

### HAYASHI, EDWARD

Lincoln High . . . Tacoma, Wash.  
Boys' Cl.

### HAYASHI, NOBUKO

Broadway High . . . Seattle, Wash.  
Showboat; Senior Girls' Cl.; Girls' Cl.

### HAYASHI, TAEKO

Lincoln High . . . Seattle, Wash.  
G.A.A.; Sr. Girls' Cl.; Girls' Cl.

### HINATSU, VICTOR

Gresham Union . . . Gresham, Ore.  
Boys' Cl.



1944

### HIRAI, KAZUKO

Broadway High . . . Seattle, Wash.  
Sr. Girls' Cl.; Girls' Cl.

### HIRANAKA, ROBERT

Kent High . . . Kent, Wash.  
Boys' Cl.

### HIRANO, YUTAKA

Roosevelt High . . . Seattle, Wash.  
Memoirs Sports Ed. '44; Hi-Lites Staff; Sr. Pin

### HIRATA, PEARL

Vancouver High . . . Vancouver, Wash.  
Sr. Girls' Cl.; Girls' Cl. Advisory Board

### HISATA, TOM

Olympia High . . . Olympia, Wash.  
Boys' Cl.

### HORI, AIKO

Broadway High . . . Seattle, Wash.  
Comm. Cl.; Sr. Girls' Cl.; Girls' Cl.

### HORI, YOSHIKO

Broadway High . . . Seattle, Wash.  
Sr. Girls' Cl.; Girls' Cl.

### IDA, MIDORI

Broadway High . . . Seattle, Wash.  
Sr. Girls' Cl.; Girls' Cl.

### IIDA, ROSE

Shumway Jr. High . . . Vancouver, Wash.  
Comm. Cl.; G. A. A.; Sr. Girls' Cl.

## SENIORS

### IIDA, TED

Shumway Jr. High . . . Vancouver, Wash.  
Boys' Cl.

### IKEDA, JUNICHI

Broadway High . . . Seattle, Wash.  
Wolverines; Hi-Y; Varsity Baseball; Record Cl.  
Pres.

### IMAI, SHIRO

Hood River High . . . Hood River, Ore.  
Varsity Track; Sr. Assembly; Sr. Banquet

### INUZUKA, KAZUKO

Benjamin Franklin High . . . Portland, Ore.  
Sr. Girls' Cl.; Girls' Cl.

### ISEFUKU, TAKEO

Broadway High . . . Seattle, Wash.  
Chess Cl.; Boys' Cl.

### ISHIBASHI, AYAKO

Broadway High . . . Seattle, Wash.  
Comm. Cl.; Sr. Girls' Cl.; Girls' Cl.



1944

### ISHIDA, RUTH

Broadway High . . . Seattle, Wash.  
Mardi Gras; May Day Madcap; Sr. Banquet;  
Record Cl.

### ISHIHARA, FRANCES

Broadway High . . . Seattle, Wash.  
A.S.H. Historian '43; Sr. Girls' Cl. Pres.; Chr.  
Showboat; Exchange Assembly; Sr. Assembly; Chr.  
Sr. Banquet

### IWAKIRI, CHIYOKO

Fife High . . . Fife, Wash.  
Showboat; Sr. Girls' Cl.; Girls' Cl.

### IWASAKI, TOSHI

Franklin High . . . Seattle, Wash.  
Chr. Showboat; Sr. Girls' Cl.; Girls' Cl.

### JITODAI, KINUYE

Garfield High . . . Seattle, Wash.  
Jr. Class Historian '43; Sr. Pin Chr.; Mardi Gras;  
Memoirs School Life Ed. '44; May Day Madcap

### KADOYAMA, MITSURU

Broadway High . . . Seattle, Wash.  
Science Cl. Sgt.-at-Arms; Boys' Cl.

### KAJIMURA, SABURO

Fife High . . . Fife, Wash.  
Boys' Cl.

### KAKIUCHI, YURIKO

Lincoln Union . . . Lincoln, Calif.  
Comm. Cl.; Sr. Girls' Cl.; Girls' Cl.

### KAMIMAE, TOMIHARU

Sumner High . . . Sumner, Wash.  
Ag. Cl.; Boys' Cl.





## SENIORS

### KANEKO, HARRY

Salem High . . . Salem, Ore.  
Wolverines; A.S.H. Rep.; Varsity Track

### KANNO, JEANIE

Roosevelt High . . . Seattle, Wash.  
Memoirs Faculty Ed. '44; Girls' Cl. Cab.; Record Cl.

### KANNO, JOHN

Roosevelt High . . . Seattle, Wash.  
Memoirs Honors Ed. '44; Jr. Class Pres. '44; Hi-Y;  
Record Cl. Sgt.-at-Arms; Mardi Gras; May Day  
Madcap; Sr. Banquet

### KANZAKI, HITOSHI

Broadway High . . . Seattle, Wash.  
Wolverines; Hi-Lites Ed. '43-'44; Varsity Baseball;  
Memoirs Sports Ed. '44

### KATO, SHUZO

Broadway High . . . Seattle, Wash.  
Sr. Class Pres. '44; A.S.H. Rep.; Hi-Y; Sr. Pin  
Science Cl.; May Day Madcap; Sr. Class Ideal

### KATSUYAMA, TOM

Garfield High . . . Seattle, Wash.  
Boys' Cl.



1944

### KAWABATA, HIMEKO

Fife High . . . Fife, Wash.  
G.A.A.; Comm. Cl.; Sr. Girls' Cl.

### KAWAHARA, FRANK

Washington High . . . Portland, Ore.  
Hi-Y; A.S.H. Rep.; Debate Cl.; Thespians; Mardi  
Gras; May Day Madcap; Varsity Track

### KAWAMOTO, GEORGE

Ridgefield High . . . Ridgefield, Wash.  
Jr. Class Rep.; Sr. Banquet; Boys' Cl.

### KAWAMOTO, JANE

Ridgefield High . . . Ridgefield, Wash.  
Sr. Class Hist. '44; Sr. Pin; Sr. Assembly;  
Sr. Banquet; Jr. Class Rep.

### KAWASAKI, MAKI

Fife High . . . Fife, Wash.  
G.A.A.; Record Cl.; Sr. Girls' Cl.

### KAWASAKI, SUE

Washington High . . . Portland, Ore.  
A.S.H. Cor. Sec. '44; Soph. Class Historian '43;  
May Day Princess '43; Mardi Gras; Thespians; Chr.  
Sr. Prom

### KAWATA, YOSH

Commerce High . . . Portland, Ore.  
Wolverines; Hi-Y Sec.; Sr. Pin; Sr. Council Rep.;  
Mardi Gras; Thespians; Jr. Council Rep.

### KAWATO, TARO

Eatonville High . . . Eatonville, Wash.  
May Day Madcap; Boys' Cl.

### KIKOSHIMA, RAY

Cleveland High . . . Seattle, Wash.  
Boys' Cl.

## SENIORS

### KIKUCHI, MIYE

Garfield High . . . Seattle, Wash.  
Comm. Cl.; Record Cl.; A.S.H. Rep.

### KIMURA, JOE

Garfield High . . . Seattle, Wash.  
Memoirs Class Ed. '44; A.S.H. Rep.; Science Cl

### KIMURA, UTAKO

C.K. McClatchy Senior High . . . Sacramento, Calif.  
G.A.A.; Comm. Cl.; Red Cross Rep.; Sr. Council  
Rep.

### KITAYAMA, YOSHIKO

Bainbridge High . . . Bainbridge, Wash.  
Sr. Council Rep.; G.A.A. Pres.; Chr. G.I. Jive; Sr.  
Pin; May Day Madcap

### KINOSHITA, MARY

Gresham Union . . . Gresham, Ore.  
Science Cl.; Sr. Girls' Cl.

### KITAJIMA, MASAKO

Bothell High . . . Bothell, Wash.  
Sr. Girls' Cl.; Girls' Cl.



1944

### KITAMURA, MOTO

Garfield High School . . . Seattle, Wash.  
Sr. Girls' Cl.; Girls' Cl.

### KIYOMURA, JEAN

Girls' Polytechnic . . . Portland, Ore.  
Sr. Girls' Cl.; Girls' Cl.

### KIYONO, MARY

Onalaska High . . . Onalaska, Wash.  
Thespians; Home Ec. Cl.

### KOGITA, SALLY

Franklin High . . . Seattle, Wash.  
Comm. Cl.; Sr. Girls' Cl.; Girls' Cl.

### KOMORITA, SHOZO

Broadway High . . . Seattle, Wash.  
Wolverines; Chess Cl. Pres.; Debate Cl. Sgt.-at-  
Arms; Jr. Council Rep.

### KONO, CHIYEKO

Roseville High . . . Roseville, Calif.  
Sr. Girls' Cl.; Girls' Cl.

### KOSAI, MARY

Auburn High . . . Auburn, Wash.  
Home Ec. Cl.; Sr.; Girls' Cl.; Girls' Cl.

### KOUCHI, ROY

Bailey Gatzert . . . Seattle, Wash.  
Art Cl.; Boys' Cl.

### KOURA, TONY

Bainbridge High . . . Bainbridge, Wash.  
Memoirs Sr. Ed.; Mardi Gras; Thespians Vice-Pres.





## SENIORS

### KOZU, SHIGERU

Broadway High . . . Seattle, Wash.  
Boys' Cl.

### KUKI, TOSHIKO

Stadium High . . . Tacoma, Wash.  
Honor Soc.; Science Cl.; Art Cl.; Speakers' Bureau  
(Tule)

### KUMATA, KIKUE

Garfield High . . . Seattle, Wash.  
Honor Soc. Sec.; Sr. Council Rep.; G.A.A.; Science  
Cl.; Debate Cl.

### KUNITSUGU, TOMIE

Broadway High . . . Seattle, Wash.  
Home Ec. Cl.; Sr. Girls' Cl.; Girls' Cl.

### KURAMOTO, MIYO

Garfield High . . . Seattle, Wash.  
Sr. Council Rep.; Home Ec. Cl.; Sr. Pin

### KURIMURA, BARBARA

Garfield High . . . Seattle, Wash.  
Jr. Class Vice-Pres. '44; Comm. Cl. Pres.; Mardi  
Gras; Mardi Gras Princess; Sr. Banquet; Chr.  
Springtime Scamper



1944

### KUWATA, SUZIE

St. Petersburg High . . . St. Petersburg, Alaska  
Sr. Girls' Cl.; Girls' Cl.

### MARUHASHI, CHIEKO

Broadway High . . . Seattle, Wash.  
Comm. Cl.; Sr. Girls' Cl.; Girls' Cl.

### MASUDA, HARUE

Sumner High . . . Sumner, Wash.  
String Ensemble; Mixed Chorus; Sr. Girls' Cl.

### MASUNAGA, FUMIYE

Bellevue High . . . Bellevue, Wash.  
Student Forum; Home Ec. Cl. Treas.; A.S.H. Rep.

### MATSUBARA, GEORGE

Isleton High . . . Isleton, Calif.  
Boys' Cl.

### MATSUDA, KATHERINE

Ballard High . . . Seattle, Wash.  
Jr. Class Sec. '43; A.S.H. Rec. Sec. '44; Thespian  
Cl. Sec.; May Day Queen; Sr. Class Ideal; Memoirs  
Sr. Ed. '44; Sr. Girls' Cl. Sec.; Mardi Gras; May  
Day Madcap, Sr. Banquet

### MATSUI, GEORGE

Broadway High . . . Seattle, Wash.  
Memoirs Art Ed. '44; Hi-Lites; Varsity Track; Re-  
cord Cl.

### MATSUSHIMA, JOHN

Broadway High . . . Seattle, Wash.  
Memoirs Sr. Ed. '44; Honor Soc.; Science Cl. Pres.;  
Debate Cl. Sec.; A.S.H. Rep.; Chr. Sr. Banquet;  
Mardi Gras; May Day Madcap; Sr. Class Ideal

### MICHIGAMI, YUKIE

Franklin High . . . Portland, Ore.  
Sr. Girls' Cl.; Girls' Cl.

## SENIORS

### MINAMOTO, NED

Hillsboro High . . . Hillsboro, Ore.  
Debate Cl.; Mardi Gras; May Day Madcap; Sr.  
Assembly

### MIYAHARA, TAK

Broadway High . . . Seattle, Wash.  
Boys' Cl.

### MIYAKE, GRACE

Sacramento High . . . Sacramento, Calif.  
Sr. Girls' Cl.; Girls' Cl.

### MIYAKE, PEGGY

Roosevelt High . . . Seattle, Wash.  
Honor Soc. Pres.; Science Cl. Historian; Chr. Spring-  
time Scamper; Record Cl.; Chr. May Day Mad-  
cap; Memoirs Publications Ed. '44

### MIYAMOTO, KIMIYE

Olympia High . . . Olympia, Wash.  
Music Cl.; Sr. Girls' Glee Cl. (Tule)

### MIYAMOTO, TAKESHI

Lincoln High . . . Tacoma, Wash.  
Wolverines; Hi-Y; Fire Brigade



1944

### MIYOSHI, TOM

Broadway High . . . Seattle, Wash.  
Boys' Cl.

### MIZUKAWA, MIYUKI

Bellevue High . . . Bellevue, Wash.  
Sr. Girls' Cl.; Girls' Cl.

### MIZUKAMI, FRANK

Fife High . . . Fife, Wash.  
Boys' Cl.

### MOROOKA, CHIYOKO

Broadway High . . . Seattle, Wash.  
Girls' Club Vice-Pres.; Jr. Council Rep.; Miss  
Mardi Gras; Sr. Girls' Cl. Vice-Pres.; Sr. Class  
Ideal

### MORIOKA, LILLY

Bellevue High . . . Bellevue, Wash.  
Girls' Cl.; Sr. Girls' Cl.

### MORITA, JIM

Garfield High . . . Seattle, Wash.  
Wolverines Pres.; Track Team; Football; A.S.H.  
Rep.

### MUKAI, MARY

Orting High . . . Orting, Wash.  
Girls' Cl.

### MURAKAMI, JACK

Eatonville High . . . Eatonville, Wash.  
Jr. Class Vice-Pres. '43; Mardi Gras; May Day  
Madcap; Hi-Lites; Sr. Class Rep.; Thespians; Sr.  
Pin

### MURAMATSU, FRANK

Parkrose High . . . Parkrose, Ore.  
Wolverines; Hi-Y; Sr. Class Pres. '44; Fire Squad





## SENIORS

### MURAOKA, MAMORU

Broadway High . . . Seattle, Wash.  
Boys' Cl.

### NAGAI, TAKAKO

Garfield High . . . Seattle, Wash.  
Science Cl.; Sr. Girls' Cl.; Girls' Cl.

### NAKAGAWA, BUNZO

Lincoln High . . . Portland, Ore.  
Hi-Y Pres.; Chr. Mardi Grass; Memoirs Mgr. Ed. '44;  
Science Cl. Vice-Pres.; A.S.H. Council; May Day  
Madcap

### NAKAGAWA, FRANK

Broadway High . . . Seattle, Wash.  
Record Cl.; Boys' Cl.

### NAKAGAWA, HANAKO

Broadway High . . . Seattle, Wash.  
Choir; Sr. Girls' Cl.; Girls' Cl.

### NAKAGAWA, SHUNICHI

Broadway High . . . Seattle, Wash.  
May Day Madcap; Boys' Cl.



1944

### NAKAGAWARA, MICHIKO

Stadium High . . . Tacoma, Wash.  
Sr. Girls' Cl.; Girls' Cl.

### NAKAMURA, JUNE

Broadway High . . . Seattle, Wash.  
Sr. Girls' Cl.; Girls' Cl.

### NAKANO, SUZANNE

Broadway High . . . Seattle, Wash.  
Commencement Speaker; Sr. Girls' Cl.; Girls' Cl.

### NAKAMURA, NOBORU

Auburn High . . . Auburn, Wash.  
Art Cl.; Music Cl.; Boys' Glee; Varsity Track  
(Tule)

### NAKASHIMA, AKIRA

Fife High . . . Fife, Wash.  
Boys' Cl.

### NAKASHIMA, HARUKO

Broadway High . . . Seattle, Wash.  
Sr. Girls' Cl.; Girls' Cl.

### NAKASHIMA, HARUKO

Sacramento High . . . Sacramento, Calif.  
G.A.A.; Comm. Cl.; Ping Pong Cl. (Tule)

### MAKISHIMA, TAKAKO

Sr. Girls' Cl.; Girls' Cl.

### NAKATSU, SAM

Highline High . . . Highline, Wash.  
Boys' Cl.



## SENIORS

### NAMBA, KEN

Gresham Union . . . Gresham, Ore.  
Boys' Cl. Pres.; A.S.H. Rep.; Wolverines Vice-  
Pres.

### NATSUHARA, GEORGE

Auburn High . . . Auburn, Wash.  
Sr. Council Rep.; Boys' Cl.

### NEZU, AKI

Broadway High . . . Seattle, Wash.  
Sr. Girls' Cl.; Girls' Cl.

### NINOMIYA, CALVIN

Broadway High . . . Seattle, Wash.  
A.S.H. Pres. '44; Memoirs Ed. '44; Memoirs Bus.  
Mgr. '43; Jr. Class Pres. '43; Hi-Lites Ed. '42-'43  
'43-'44; Pen Manual; Honor Soc. Vice-Pres.; Hi-Y;  
A.S.H. Council; Thespian Cl.

### NISHIMOTO, HENRY

Kent High . . . Kent, Wash.  
Boys' Cl.

### NITTA, JACKSON

Renton High . . . Renton, Wash.  
Boys' Cl.



1944

### NOMIYAMA, KAY

Stadium High . . . Tacoma, Wash.  
Sr. Girls' Cl.; Girls' Cl.

### ODA, LILLIAN

The Dalles High . . . The Dalles, Ore.  
Sr. Council Rep.; Sr. Assembly; Sr. Banquet

### OGASAWARA, MARY

Garfield High . . . Seattle, Wash.  
Mardi Gras Princess; Sr. Girls' Cl.; Girls' Cl.

### OHARA, MARI

Broadway High . . . Seattle, Wash.  
Comm. Cl.; Art Cl.

### OKADA, CHIYOSHI

Franklin High . . . Seattle, Wash.  
Boys' Cl.

### OKADA, ROY

Broadway High . . . Seattle, Wash.  
Boys' Cl.; Boys' Cl. Hist.

### OKADA, MAS

Fife High . . . Fife, Wash.  
Jr. Class Cab. '43; Mari Gras; Hi-Lites; Memoirs  
'43; Sr. Class Pub. Mgr. '44

### OKAMOTO, KATSUMI

Broadway High . . . Seattle, Wash.  
A.S.H. Pub. Mgr. '44; Hi-Y Vice-Pres.; Wolverines;  
Thespian Cl. Treas.; Mardi Gras; May Day Mad-  
cap; May Day King; Sr. Prom

### OKAZAKI, MARY

Lincoln High . . . Portland, Ore.  
Sr. Girls' Cl.; Girls' Cl.





## SENIORS

### OKAZAKI, RAIZO

Garfield High . . . Seattle, Wash.  
Mardi Gras; Boys' Cl.; Track

### OKITA, JOHN

Sacramento High . . . Sacramento, Calif.  
Sr. Pin; Hi-Lites; Memoirs School Life Ed. '44

### OKITA, NOBUKO

Franklin High . . . Seattle, Wash.  
G.A.A.; Sr. Girls' Cl.; Girls' Cl.

### OKITA, YOSHITO

Benson Polytechnic . . . Portland, Ore.  
Boys' Cl.

### OMURA, ROSE

Auburn High . . . Auburn, Wash.  
Comm. Cl.; Sr. Girls' Cl.; Girls' Cl.

### ONCHI, YOSHIKO

Kent High . . . Kent, Wash.  
Outdoor sports (Tule); Girls' Cl.



1944

### ONO, TAKAKO

Girls' Polytechnic . . . Portland, Ore.  
Sr. Girls' Cl.; Girls' Cl.

### ONODA, TOSHIKO

Broadway High . . . Seattle, Wash.  
Comm. Cl.; Sr. Girls' Cl.; Girls' Cl.

### OSAKA, WILLIAM

Garfield High . . . Seattle, Wash.  
Boys' Cl.

### OYA, TERUKO

Gresham Union . . . Gresham, Ore.  
Sr. Girls' Cl.; Girls' Cl.

### OYAMA, JUNE

St. Petersburg High . . . St. Petersburg, Alaska  
Sr. Girls' Cl.; Girls' Cl.

### OYAMA, KATHERINE

Auburn High . . . Auburn, Wash.  
Sr. Girls' Cl.; Girls' Cl.

### OZAWA, MARIE

Garfield High . . . Seattle, Wash.  
Sr. Girls' Cl.; Girls' Cl.

### SAIKI, YOSHIO

Kirkland High . . . Kirkland, Wash.  
Boys' Cl.

### SAITO, AKI

Broadway High . . . Seattle, Wash.  
Record Cl.; Sr. Girls' Cl.; Girls' Cl.



## SENIORS

### SAKAI, TAEKO

Bainbridge High . . . Bainbridge, Wash.  
G.A.A.; Sr. Girls' Cl.; Girls' Cl.

### SAKAMOTO, HATSUNE

Broadway High . . . Seattle, Wash.  
Sr. Girls' Cl.; Girls' Cl.

### SAKAMOTO, SHIG

Lincoln High . . . Portland, Ore.  
A.S.H. Vice-Pres. '44; Memoirs Organizations Ed. '44; Hi-Y; Wolverines Sec.; Mardi Gras; May Day Madcap; May Day Prince '43; Soph. Class Pres. '43

### SAKO, HIROSHI

Broadway High . . . Seattle, Wash.  
Sr. Council; Thespian Cl. Vice-Pres.; Chr. Sr. Prom

### SAKUMA, JUDY

Broadway High . . . Seattle, Wash.  
Sr. Girls' Cl.; Girls' Cl.

### SASAKI, AKIYE

Orting High . . . Orting, Wash.  
Sr. Girls' Cl.; Girls' Cl.



1944

### SASAKI, FRANK

Gresham Union . . . Gresham, Ore.  
Baseball; Hi-Y

### SASAKI, KIMI

Milwaukie Union . . . Milwaukie, Ore.  
Sr. Girls' Cl.; Girls' Cl.

### SATO, SAM

Heppner High . . . Heppner, Ore.  
Boys' Cl.

### SATO, TOSHIKO

Adna High . . . Adna, Wash.  
Tri-Y; Girls' Reserves; Red Cross Rep. (Tule)

### SAWADA, YURI

Garfield High . . . Seattle, Wash.  
Record Cl.; Jr. Council Rep.

### SHIMIZU, AKIRA

Garfield High . . . Seattle, Wash.  
Honor Soc.; Science Cl.; May Day Madcap

### SHIMIZU, GEORGE

Fife High . . . Fife, Wash.  
Wolverines; Varsity Baseball

### SHINBO, LOIS

Broadway High . . . Seattle, Wash.  
Sr. Girls' Cl.; Girls' Cl.

### SHIRAISHI, MAE

Gresham Union . . . Gresham, Ore.  
Sr. Girls' Cl.; Girls' Cl.





## SENIORS

### SHITAMAE, YOSHIKO

Broadway High . . . Seattle, Wash.  
Comm. Cl.; Honor Soc.

### SONO, KOJI

Lincoln High . . . Portland, Ore.  
Boys' Cl.

### SUGENO, HENRY

Broadway High . . . Seattle, Wash.  
Boys' Cl.

### SUGIKAWA, YOSHIKO

Girls' Polytechnic . . . Portland, Ore.  
Sr. Girls' Cl.; Girls' Cl.

### SUYAMA, NOBUE

Stadium High . . . Tacoma, Wash.  
Sr. Girls' Cl.; Girls' Cl.

### SUYEMATSU, TOSHIO

Bainbridge High . . . Bainbridge, Wash.  
Boys' Cl.



1944

### SUZUKI, ANN

Franklin High . . . Seattle, Wash.  
Comm. Cl.; Sr. Girls' Cl.; Girls' Cl.

### SUZUKI, FUMI

Broadway High . . . Seattle, Wash.  
Comm. Cl.; Sr. Girls' Cl.; Girls' Cl.

### TAHARA, SACHIKO

Girls' Polytechnic . . . Portland, Ore.  
Sr. Girls' Cl.; Girls' Cl.

### TAJITSU, UTAKO

Garfield High . . . Seattle, Wash.  
Sr. Girls' Cl.; Girls' Cl.

### TAKEUCHI, MARY

Broadway High . . . Seattle, Wash.  
Sr. Girls' Cl.; Girls' Cl.

### TAKEUCHI, ROBERT

Puyallup High . . . Puyallup, Wash.  
Varsity Baseball; Track

### TAMAKI, TED

Lincoln High . . . Tacoma, Wash.  
May Day Madcap; Sr. Assembly; Science Cl.; De-  
bate Cl.

### TAMIYASU, MICKEY

Salem High . . . Salem, Ore.  
Wolverines; Sr. Assembly; Varsity Track

### TAMIYASU, PAULINE

Salem High . . . Salem, Ore.  
Art Cl.; Sr. Girls' Cl.; Girls' Cl.



## SENIORS

### TAMURA, MITSURU

Fife High . . . Fife, Wash.  
Boys' Cl.

### TAMURA, YOSH

Roosevelt High . . . Seattle, Wash.  
Boys' Cl.

### TANABE, DELMAR

Fife High . . . Fife, Wash.  
Boys' Cl.

### TANABE, HENRY

Broadway High . . . Seattle, Wash.  
Sr. Council Rep.; Hi-Lites

### TANABE, SADAMU

Gresham Union . . . Gresham, Ore.  
Boys' Cl.

### TANAKA, EDDIE

Sumner High . . . Sumner, Wash.  
Wolverines; Sr. Mixer



1944

### TANAKA, FRANK

Jefferson High . . . Portland, Ore.  
Sr. Council Rep.; Pen Cl.; Sr. Pin

### TANIGUCHI, YOSHIKO

Broadway High . . . Seattle, Wash.  
Sr. Girls' Cl.; Girls' Cl.

### TANINO, WILLIAM

Ketchikan High . . . Ketchikan, Alaska  
Boys' Cl.

### TAZUMA, JIMMY

Broadway High . . . Seattle, Wash.  
A.S.H. Rep.; Science Cl.; Honor Soc.; May Day  
Madcap

### TOCHIHARA, CHIZUKO

Broadway High . . . Seattle, Wash.  
Sr. Girls' Cl.; Girls' Cl.

### TSUBOI, SACHIKO

Broadway High . . . Seattle, Wash.  
Sr. Girls' Cl.; Girls' Cl.

### TSUCHIKAWA, MARY

Broadway High . . . Seattle, Wash.  
Sr. Girls' Cl.; Girls' Cl.

### TSUCHIKAWA, OSAO

Broadway High . . . Seattle, Wash.  
Varsity Track; Sr. Banquet

### TSUJI, ESTHER

Broadway High . . . Seattle, Wash.  
Sr. Girls' Cl.; Girls' Cl.





## SENIORS

### TSUJIKAWA, STANTON

Kent High . . . Kent, Wash.  
Showboat; Chr. Jr. Assembly

### TSUJIMURA, LILY

Girls' Polytechnic . . . Portland, Ore.  
Sr. Girls' Cl.; Girls' Cl.

### UCHIDA, HENRY

Broadway High . . . Seattle, Wash.  
Boys' Cl.

### UEDA, KIYO

Fife High . . . Fife, Wash.  
Memoirs Ed. '44; Hi-Lites Ed. '42-'43, '43-'44; Pen  
Cl. Ed.; Sr. Council Rep.; Memoirs Class Ed. '43

### UENISHI, HOPE

Immaculate . . . Seattle, Wash.  
Sr. Girls' Cl.; Girls' Cl.

### UMEMURA, FLORENCE

Broadway High . . . Seattle, Wash.  
Sr. Girls' Cl.; Girls' Cl.



1944

### UOMOTO, MASARU

Broadway High . . . Seattle, Wash.  
Boys' Cl.

### USUI, ROY

Gresham Union . . . Gresham, Ore.  
Boys' Cl.

### UYEGAKI, YUKI

Cleveland High . . . Seattle, Wash.  
Showboat; Commencement Exercises

### UYEKI, EUGENE

Broadway High . . . Seattle, Wash.  
Pen Cl. Vice-Pres.; Memoirs Bus. Mgr. '44; Sr.  
Class Vice-Pres.; Debate Cl. Pres.; Sr. Council Rep.;  
May Day Madcap Chr.

### WADA, YUKIKO

Broadway High . . . Seattle, Wash.  
Sr. Girls' Cl.; Girls' Cl.

### WATANABE, DUTCH

Milwaukie Union . . . Milwaukie, Ore.  
A.S.H. Treas. '44; Hi-Y Sgt.-at-Arms; Hi-Lites;  
Baseball; Memoirs Sports Ed. '44

### WATANABE, AKI

Auburn High . . . Auburn, Wash.  
Boys' Cl.

### YAMADA, BETTY

Auburn High . . . Auburn, Wash.  
Sr. Girls' Cl.; Girls' Cl.

### YAMADA, HENRY

Benson Polytechnic . . . Portland, Ore.  
Boys' Cl.



## SENIORS

### YAMADA, MARIA

Fife High . . . Fife, Wash.  
Sr. Girls' Cl.; Girls' Cl.

### YAMADA, TAEKO

Broadway High . . . Seattle, Wash.  
Art Cl.; Sr. Girls' Cl.; Girls' Cl.

### YAMAGUCHI, MARY

Westport High . . . Westport, Wash.  
Comm. Cl.; Sr. Girls' Cl.; Girls' Cl.

### YAMAMOTO, HIDEAKI

Cleveland High . . . Seattle, Wash.  
Boys' Cl.

### YAMANAKA, KATHRYN

Elk Grove High . . . Elk Grove, Calif.  
Home Ec. Cl.; Sr. Girls' Cl.; Girls' Cl.

### YAMANISHI, MARIA

Vancouver High . . . Vancouver, Wash.  
Home Ec. Cl.; Sr. Pin; Art Cl. (Tule)



1944

### YAMASHITA, AMY

Bainbridge High . . . Bainbridge, Wash.  
G.A.A.; Sr. Girls' Cl.; Girls' Cl.

### YAMASHITA, ISAO

Bainbridge High . . . Bainbridge, Wash.  
Boys' Cl.

### YANAGIMOTO, KIMI

Broadway High . . . Seattle, Wash.  
Sr. Girls' Cl.; Girls' Cl.

### YANAGITA, MASAHISA

Broadway High . . . Seattle, Wash.  
Boys' Cl.

### YASUDA, HENRY

Broadway High . . . Seattle, Wash.  
Wolverines; Hi-Y; May Day Madcap

### YONEYAMA, HIROSHI

Broadway High . . . Seattle, Wash.  
Hi-Lites; Mardi Gras

### YORITA, GEORGE

Garfield High . . . Seattle, Wash.  
Varsity Baseball; Boys' Cl.

### YOSHIDA, MARY

Garfield High . . . Seattle, Wash.  
Sr. Girls' Cl.; Girls' Cl.

### YUKAWA, JUNJI

Bainbridge High . . . Bainbridge, Wash.  
Mardi Gras; Boys' Cl.







## SENIORS — 1944

### ZAKOJI, HIROTO

*Lincoln High . . . Portland, Ore.*  
Hi-Y Sec.; Memoirs Bus. Mgr.; Baccalaureate Chr.;  
Commencement Speaker

## CAMERA-SHY SENIORS

HAYASHI, HIDEO

HIKIDA, MAY

IKE, JOE

IMAGAWA, KIYOSHI

ISHIDA, CHIYEKO

KIKUCHI, KIKUE

KUMASAKA, KAZUO

MATOB, TERU

MIHARA, RYOJI

NAKAMURA, KUNI

OKAMOTO, KENJI

OKANO, TERUKO

SAKUMA, SATORU

SAKUMA, SHUN

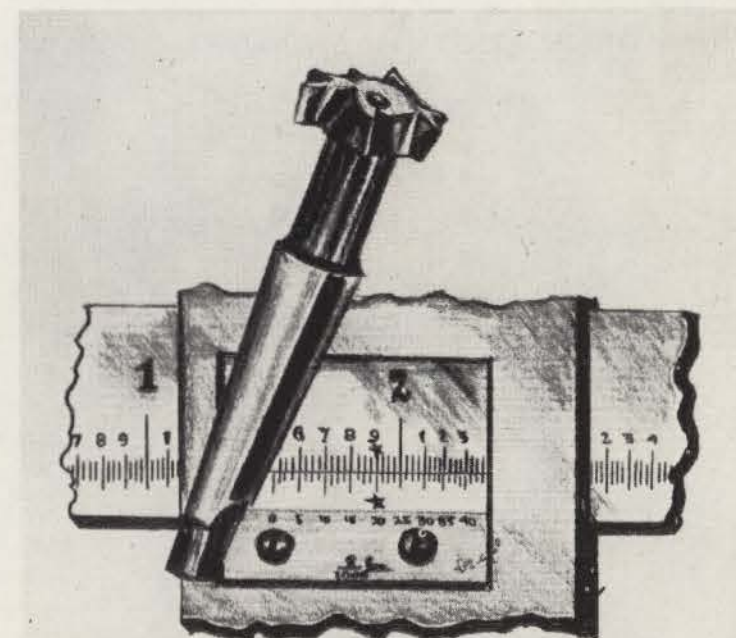
SHINOZAKI, SAM

TAKAGI, ROBERT

TERAYAMA, MORIO

YOSHIOKA, LUCY

## JUNIORS







Miss J. McNary  
Adviser



Mr. R. Coombs  
Adviser



MISS E. THARP  
Adviser



LEFT TO RIGHT—John Kanno, pres.; Kay Fukuma, pub. mgr.; Anne Dady, sec.-treas.; Barbara Kurimura, vice-pres.; Katherine Kido, hist.

## JUNIOR CLASS

With the advantageous combination of the capable leadership of president John Kanno and the juniors' tremendous alacrity, the class of "Forty-five" has proven itself a definite asset to the school, taking an active part in both school government and in school life.

Their social calendar was filled with numerous events. The first was the highly successful "Junior Jounce," and this was followed by other dances, assemblies, and mixers.

The assemblies which were sponsored by each core class throughout the year should receive special mention for they not only brought out hidden talent and furnished a great deal of enjoyment to everyone, but they also brought the juniors closer together. This union has been the main factor in aiding them to fulfill their duties to the utmost and in enabling them to call their year a success.

Though just juniors today, enjoying their school life, tomorrow these students will be playing an influential part in the preservation of democracy and the Four Freedoms, in carrying on the good work which will be left for our generation and in the rebuilding of this war-torn world. So with heads high and with strong determination in their hearts, the juniors are looking ahead to the future, intending to meet the challenge in the best way possible.



### JUNIOR COUNCIL

ROW ONE—Tamiyasu, Toshi; Ito, Dolly; Horita, Shizuko; Kanda, Betty; Sawada, Yuri.  
ROW TWO—Takahashi, Fumio; Heyamoto, Toshie; Kaneko, Lilly; Saito, Kay.

## JUNIORS

ROW ONE—Tsurui, Sumie; Sakai, Asako; Yoshioka, Lucy; Torii, Eunice; Sunata, Frances; Fujita, Fude; Kinoshita, Mary; Tamiyasu, Toshie; Yorita, Jimmy.

ROW TWO—Nakamura, Hiroshi; Sasaki, Henry; Nishimura, George; Higo, Katsuma; Numata, Julius; Sata, Lindy; Imanagita, Osamu; Hiro-mura, Minoru.



ROW ONE—Kagawa, Henry; Inouye, Kiichiro; Kido, Katherine; Kondo, Amy; Komachi, Wanda; Kaga, Fumi; Aoyama, Frank; Hayashi, Tom.

ROW TWO—Hikida, Ray; Kawase, Kana; Hishikawa, Shun; Hasegawa, Paul; Kawahara, Shig.



ROW ONE—Usui, Mary; Nakashima, Fumiko; Yabe, Sheila; Watanabe, Toshiko; Mitsudo, Alice; Nakano, Miyeko; Watanabe, Emma; Nori-take, Yasuko.

ROW TWO—Kono, Kiyoshi; Okita, Billy; Yoshino, Shizue; Yoneyama, Isamu; Nakamura, Jimmy.



- Art Exhibit
- Senior Class Ideals





## JUNIORS



ROW ONE—Takeshita, Haruko; Yamagishi, Kimi; Shimoyama, Nellie; Tomita, Sophie; Ayami, Teddy; Kiri-hara, Mitzi; Miyazawa, Sumi.

ROW TWO—Nishimoto, Yoshi; Matsu-moto, George; Watanabe, Tatsuko; Ishimitsu, Kiyoshi; Sako, Saburo.



ROW ONE—Kimura, Florence; Ikeda, Mary; Uyeda, Evelyn; Niiya, Sumi; Kubo, Michiko; Ariyasu, Amy; Nita, Yasuko; Yoshihara, Aiko.

ROW TWO—Hashizume, George; Harada, Tad; Ikeda, George; Habu, Kimiko; Heyamoto, Toshie; Matsubara, Jean; Nakamura, Al; Izumi, Fred.



ROW ONE—Abe, Tomiko; Kanda, Betty; Fukuhara, Aiko; Ochiai, Shizuko; Ogino, Yae; Nagai, Anna; Iga, Kay.

ROW TWO—Matsumoto, William; Fukuma, Kay; Hiyama, Tak; Koba, Teruo; Horiuchi, Arthur; Nakatani, Kabo.

- Workshop Construction Crew



## JUNIORS

ROW ONE—Tada, Yuri; Tanaka, Thelma; Seko, Amy; Sasaki, Mary; Uyehara, Agnes; Furukawa, Amy; Kotsai, Hatsumi.

ROW TWO—Enkoji, Renso; Tsuye, George; Tanaka, Albert; Yorozu, Art; Hamasaki, Tomio.



ROW ONE—Ito, Dolly; Kikuchi, Kikue; Kirita, Toshi; Mitsunaga, Marian; Kono, Fumi; Horita, Shizuko; Kungu, Fugi.

ROW TWO — Hishimura, Kikue; Chikamura, Tak; Kozu, George; Kashiwagi, Isamu; Ohashi, Hope.



ROW ONE—Seko, Mary; Osaka, Nancy; Yamada, Hisa; Saito, Kay; Tsutsumoto, May; Suzuki, Fumiko; Saito, Mary.

ROW TWO—Takatsuka, George; Sakurai, Dick; Yasuda, Tetsu; Sumita, Mas; Kido, Edward.



- Home Economics Enthusiasts
- The Science Room (Style 1943)





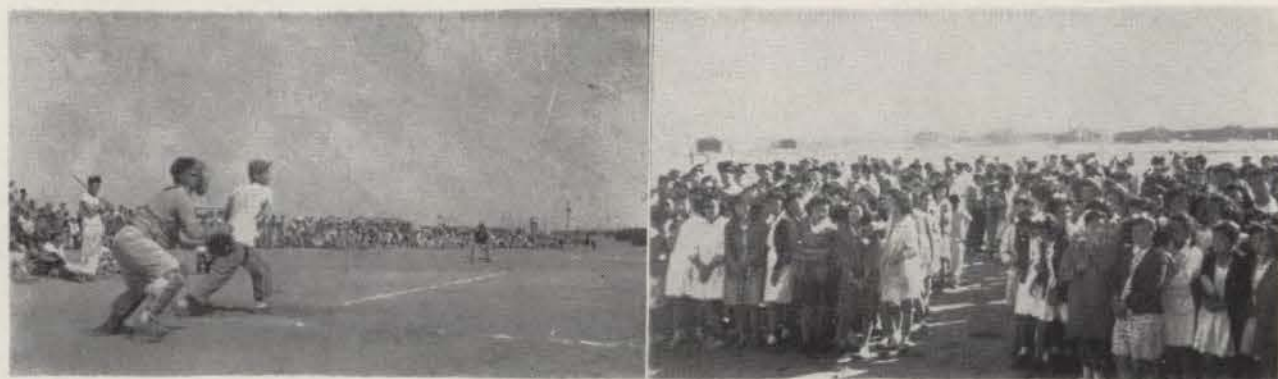


## JUNIORS

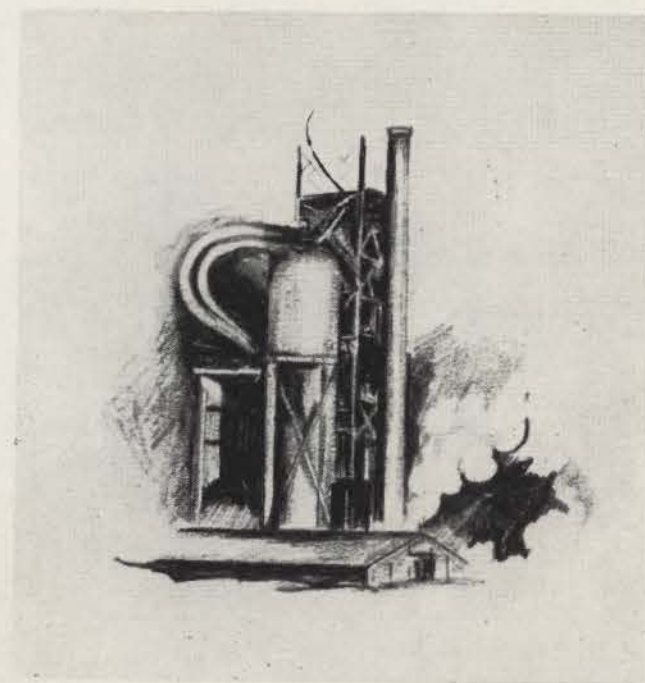
ROW ONE—Sasaki, Mary; Ishikawa, Namiko; Kaneko, Lilly; Nakamoto, Charlotte; Kuromiya, Kiyoko; Murakami, Teru; Ogata, Yoshi.

ROW TWO—Tanino, Jimmy; Matsubu, Henry; Sakakibara, Sho; Inouye, Shingo.

- *It's A Hit!*
- May Day Crowd



## SOPHOMORES







Miss E. Gilmore  
Adviser



Miss K.  
Gonnerman  
Adviser



Mrs. H. Phifer  
Adviser



LEFT TO RIGHT—Lane Fujikado, *social chr.*; Henry Okuda, *pub. mgr.*; Susie Shimizu, *sec.*; Naoko Anzai, *hist.*; Teruo Jitodai, *pres.*; Alfred Hyosaka, *treas.*; not pictured—Victor Fujioka, *vice-pres.*

## SOPHOMORE CLASS

Beginning their second year, the sophomores elected the genial and very popular Teruo Jitodai as their president. Through his competent leadership, aided by other members of his cabinet, they had a very active year.

Their activities included their annual "Inaugural Ball," followed by other dances, assemblies, inter-core class basketball games, weekly jit sessions, and debates and projects concerning the future in their core classes.

This class is still very young, but its initiative is already well-known throughout the school. It is the first class to start a class paper and the first to sponsor a Class Day. During its next two years, it will undoubtedly go a long way in helping Hunt High School to become, "one of the best."



SOPHOMORE CLASS COUNCIL

LEFT TO RIGHT—Henry Kawata, Yuki Jack Tsuchiya, Kazuko Suzuki, Ray Mitsudo.

## SOPHOMORES

ROW ONE—Anzai, Naoko; Fujihara, Hanaye; Endo, Kazuko; Fujii, Hiroshi; Akagi, Jim.

ROW TWO—Aono, Tom; Akiyama, Charles; Aoyama, George; Akiyama, Henry; Fujii, Alfred.



ROW ONE—Furumoto, Shiz; Fukei, Sumiye; Hara, Mary; Hashimoto, Katsumi; Hashimoto, Yasuko.

ROW TWO—Gojio, Grace; Haga, Aiko; Hada, John; Fukuyama, Tom.



ROW ONE—Hayashi, Shiz; Hirabayashi, Edna; Horiuchi, Lucius; Hidaka, Setsuko; Ikeda, Mary.

ROW TWO—Hyosaka, Sumio; Hayashi, Tokio; Hayashi, Rae; Hyosaka, Alfred; Ikeda, Bill.



- Mr. Bodine Interviews
- During Any Art Hour







## SOPHOMORES

ROW ONE—Inukai, Takako; Kaneko, Rulie; Imai, Molly; Ikoma, Kaz; Kawahara, Ruth; Kawaguchi, Aiko; Imanishi, Hatsuye.

ROW TWO—Kaga, Shoji; Kawaguchi, John; Kakehashi, Sam; Kashiwagi, George; Kawachi, Mits; Kakiuchi, Min; Jitodai, Teruo.



ROW ONE—Kinoshita, Carrie Kirie; Kimura, Harue; Kiuchi, Sonoye; Kodama, Dorothy; Kikuchi, Reyko; Kobayashi, Teruko.

ROW TWO—Kobayashi, Roy; Kitayama, Yoichi; Kodama, Tom; Kawata, Henry.



ROW ONE—Konishi, Yoshie; Kusakabe, Penelope; Masuda, Tom; Masuda, Haruko; Light, Thomas; Kosai, Aizo.

ROW TWO—Kumata, Shuso; Kendo, Hideo; Kumasaka, Tatsuo; Koyama, William; Kokita, Hideo; Koura, Kenso.

- Walking the Plank
- Miss Hines and Co.



## SOPHOMORES

ROW ONE—Matsubara, Donald; Monde, Yuri; Morioka, Helen; Morita, Margaret; Miura, Reyko; Murakami, Elsie; Mukaida, Takako; Matsui, Terry; Mayeno, Art.

ROW TWO—Morikawa, George; Mizuki, George; Mizumoto, Kiyomi; Mukai, Roy; Murakami, Earl; Morita, Claude; Matsuda, George; Mitsunaga, Eddie; Murakami, Washin.



ROW ONE—Noritake, Chiyeko; Ohno, Miyako; Nagai, Chiharu; Nii, Amy; Nakata, Mary; Nakayashiki, Yoshiko.

ROW TWO—Oba, Takashi; Muramatsu, Henry; Oba, Calvin; Nakahara, Sab; Nakamura, Ben.



ROW ONE—Onishi, Shimako; Shirai, Jean; Sakai, Chiyoko; Sakai, Fumi; Ohtani, Betty; Sata, Rose; Oiye, Ikuko.

ROW TWO—Saito, Keigo; Owada, Sab; Ozaki, George; Owada, Ed.; Noji, Tetsuo; Ono, Yosh.

- Mechanical Artists
- Pomeroy's Protoges







## SOPHOMORES

ROW ONE—Sadanaga, Mary; Shimi-  
zu, Susie; Suyama, Minoru; Suzu-  
ki, Margaret; Suzuki, Kazuko.

ROW TWO—Sono, Ruth; Shiogi, Hiro;  
Sugawara, Dorothy; Sugimoto, Sa-  
chi.



ROW ONE—Takasumi, Fred; Tameno,  
Ruth; Takahashi, Masako; Tanada,  
Alice; Suzuki, Rosie; Taniguchi,  
Theodore.

ROW TWO—Tanabe, Taka; Togami,  
Kaz; Tanaka, Shoichi.



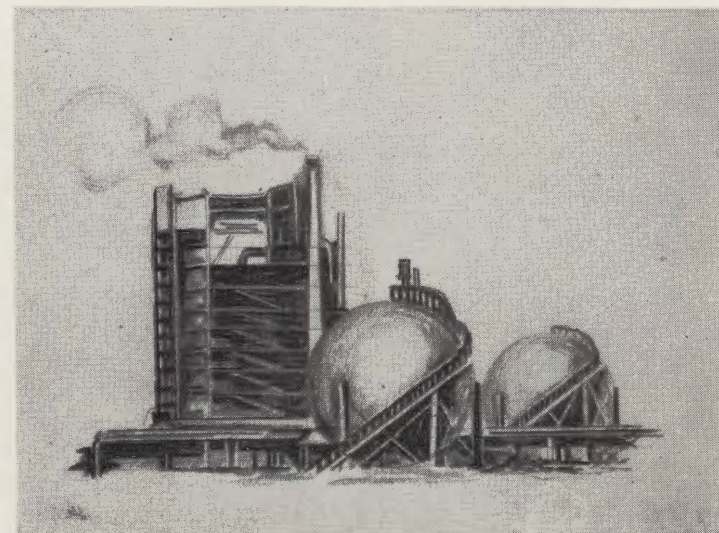
ROW ONE—Yoshitomi, June; Yama-  
no, Akiye; Yutani, Masako; Yoshi-  
hara, Catherine; Yamamoto, Kiku-  
ko.

ROW TWO—Yuzuriha, Tsuyu; Yama-  
hiro, Roy; Yasuda, Sada.

- Student Government
- Passing An Idle Hour



## FRESHMEN







Miss G. Cline  
Adviser



Mrs. E. Mullins  
Adviser



Mr. R. Coombs  
Adviser



LEFT TO RIGHT—Paul Hiromura, *pres.*; Sally Suzuki, *vice-pres.*; Lilly Kobayashi, *treas.*; Polly Minamoto, *social com. co-chr.*; Shizuko Tsuji, *sec.*; Mino Nitta, *social com. co-chr.*; not pictured—Ted Takaya, *chr. constitution comm.*

## FRESHMAN CLASS

Highlighting their social year, the "Freshman Frolic" and the "Freshman Day" exemplified the initiative and cooperation of the freshman class. It is such spirit that displays the essence of leadership. And they, as future leaders, show promise as capable, efficient student government administrators. The freshman class now approach their sophomore year, determined to play a major role in the student activities of Hunt High School.



FRESHMAN CLASS COUNCIL

LEFT TO RIGHT—Emiko Chikamura, Marie Horiuchi, Nori Miyazawa.

## FRESHMEN

ROW ONE—Abe, Katsuji; Aoyama, Katsumi; Akiyama, Homer; Aono, Shozo; Davidson, Mary Ann; Arase, Yukiko.

ROW TWO—Asaoka, Hisako; Ariyasu, Fumiko; Doi, Yaeko; Chikamura, Emiko; Akiyama, Kimi.



ROW ONE—Hamada, Helen; Fujita, Mieko; Fujita, Shizuko; Hara, Marian; Fujihara, Tamaya; Hamaoka, Sachiko; Fukuhara, Sada.

ROW TWO—Fukutomi, Bobby; Furu-gori, Tatsumi; Fujiwara, Jerry; Hanada, Ted; Fukuma, Michael.



ROW ONE — Iida, George; Imai, George; Ishibashi, Ruth; Ishii, Lillian; Inouye, Michiko; Ikeda, Betty.

ROW TWO—Ishikawa, Mary; Hishikawa, Yoko; Ishida, Jean; Hiyama, Esther; Horiuchi, Marie.



ROW ONE—Kanegae, George; Izumi, Richard; Kato, Zenichi; Kato, Kiyoshi; Kaseguma, Masako; Iwasaki, Marine.

ROW TWO—Komachi, Ruth; Fujino, Mitsuko; Ishimitsu, Kazuo; Katayama, Mits; Kawabata, Shioyaji.



- Taking A Cut!
- Pencil Sketches







## FRESHMEN

ROW ONE—Kikuchi, Takako; Kinoshita, Marie; Kawako, Esther; Kobayashi, Lily; Kawahara, Kazuko; Kihara, Mickey; Kimura, Martha.

ROW TWO—Kodama, Joseph; Kishi, George; Kobata, Louise; Kitayama, Keiko; Kawasaki, Katherine.

ROW THREE—Kawashima, Ben; Kinoshita, Charles; Kamekawa, Joseph.



ROW ONE—Kobayashi, George; Kondo, William; Kono, Tadashi; Kusachi, Hazel; Kogane, Betty; Kojima, Yuriko; Kyono, Sakae.

ROW TWO—Kuga, Ruth; Kogita, Dorothy; Kodama, Yuri; Kono, Marian; Kurosaka, Ellen; Kosai, Mitsuko.



ROW ONE—Nakamura, Toshiko; Nakasone, Christine; Nakamura, Agnes; Nakatani, Lily; Nakagawa, Shigeko; Nakagawa, Hiroko; Nakano, George.

ROW TWO—Nakai, Yoshiko; Nakuchi, Miwako; Nakamura, Kaz; Nakamura, Toshi; Nagaoka, Harry; Matsuoka, Jimmy.



ROW ONE—Oye, Terry; Ozawa, Grace; Sasaki, Kathleen; Sakuma, Lillian; Shigaya, Sylvia; Saito, Shirley.

ROW TWO—Sasaki, Hideo; Seko, Roy; Sato, Frank; Saito, Masaharu.

- Facial Cleansing
- Work of Art



## FRESHMEN

ROW ONE—Sugawara, Gladys; Susumi, Lillian; Suyematsu, Eiko; Sugimoto, Martha; Tahara, Dorothy; Tada, Norma.

ROW TWO—Shiota, Yoshio; Sunata, Catherine; Suzuki, Peggy; Shioyama, Peggy; Sugeno, Florence; Suzuki, Tadasu.



ROW ONE—Takayoshi, Kiyoko; Taka, June; Tateishi, Julia; Tamura, Marian; Tanabe, Marilyn; Tanaka, Alice.

ROW TWO—Osaka, Roy; Takaya, Ted; Takeshita, Hiroshi; Tanabe, Eddie; Takashima, Sadamu.



ROW ONE—Tsuboi, Setsuko; Terada, Alice; Tsuji, Shizuko; Tsujimura, Mary; Unosawa, Marian; Uno, Hiroko.

ROW TWO—Togo, Ramsey; Tomita, Izack; Tsukamoto, George; Uenishi, Roy; Tsutsumoto, Ben.



ROW ONE—Yamanishi, Myrtle; Yamashita, Alice; Yamaguchi, Ruth; Usuda, Martha; Wada, Fukue; Urakawa, Starr; Uyeda, Jessie.

ROW TWO—Watanabe, Kikuno; Yamamoto, Gene; Watanabe, James; Watanabe, Hisashi; Yamada, Frank; Uyesugi, Tom; Watanabe, Florence; Wada, Yoneko.

- Kuroki Gets Set!
- School Art Display







## FRESHMEN

ROW ONE—Yamashita, Kimi; Yoshihara, Masato; Yoshino, Kenneth; Yoshioka, Arthur; Yoshihara, Emiko.

ROW TWO—Yukawa, Toshiko; Yoshimura, Chiyoko; Yamashita, Grace; Yoshimura, Kazuko; Yamashita, Sally; Yoshida, Sue; Yanagimoto, Katsuko.

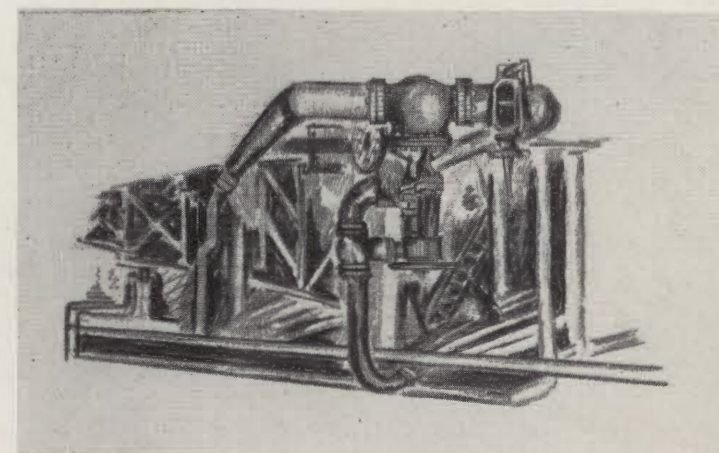
● Miss Cline Counsels



● Drawing For Fun



## EIGHTH GRADERS







Mrs. M. Frost  
Adviser



Miss A. Gwinn  
Adviser



LEFT TO RIGHT—Lillian Hada, *sec.*; Mary Komachi, *pres.*

## EIGHTH GRADERS

While pursuing their course of study through-out their second year in Hunt High School, the eighth grade class has made progress by acquiring knowledge, by becoming more socially assimilated, and by coping with typical high school problems with a mature perspective. Their year was well rounded, for their program was not confined to socials alone, but also to various sport tournaments. In these various events the spirit of "fair play" and the "will to win" were featured which will prove valuable to them in the future.



EIGHTH GRADE CLASS COUNCIL

LEFT TO RIGHT—William Tanaka, Joe Kuge, Mary Komachi, James Kubota, George Mano

## EIGHTH GRADERS

ROW ONE—Arakawa, Mary; Asaba, Kimi; Ehama, Mary; Endo, Masako; Fujita, Dorothy; Fukuda, Ayako; Furumoto, Setsuko.

ROW TWO—Asaoka, Kiyoshi; Beeson, Jerry; Eyon, John.



ROW ONE—Inouye, Howard; Hada, Lillian; Ikeda, Etsuko; Ishimitsu, Yaeko; Kadoyama, Satako; Hada, Sada.

ROW TWO—Hisata, Masashi; Hayashida, Kazuo; Hayashi, Shuichi; Kaino, Frank; Ikeda, Kay.



ROW ONE—Kikuchi, Masako; Kinoshita, Yasuko; Koyama, Eva; Kanda, Kiyo; Kojima, Chifumi.

ROW TWO—Kosai, Masayoshi; Kasahara, Shoji; Kubota, James; Itano, Tom; Kuge, Joe.



ROW ONE—Nagai, Arthur; Nomura, George; Nakahara, Midori; Masumoto, Fusae; Nakamura, Lucille; Kuroye, George; Kuwata, Dick.

ROW TWO—Morioka, Ken; Nakashima, Tsutomu; Nakawatase, Masanori; Makishima, Hideo; Miyake, Richard.



### ● Gym Construction Scenes

