

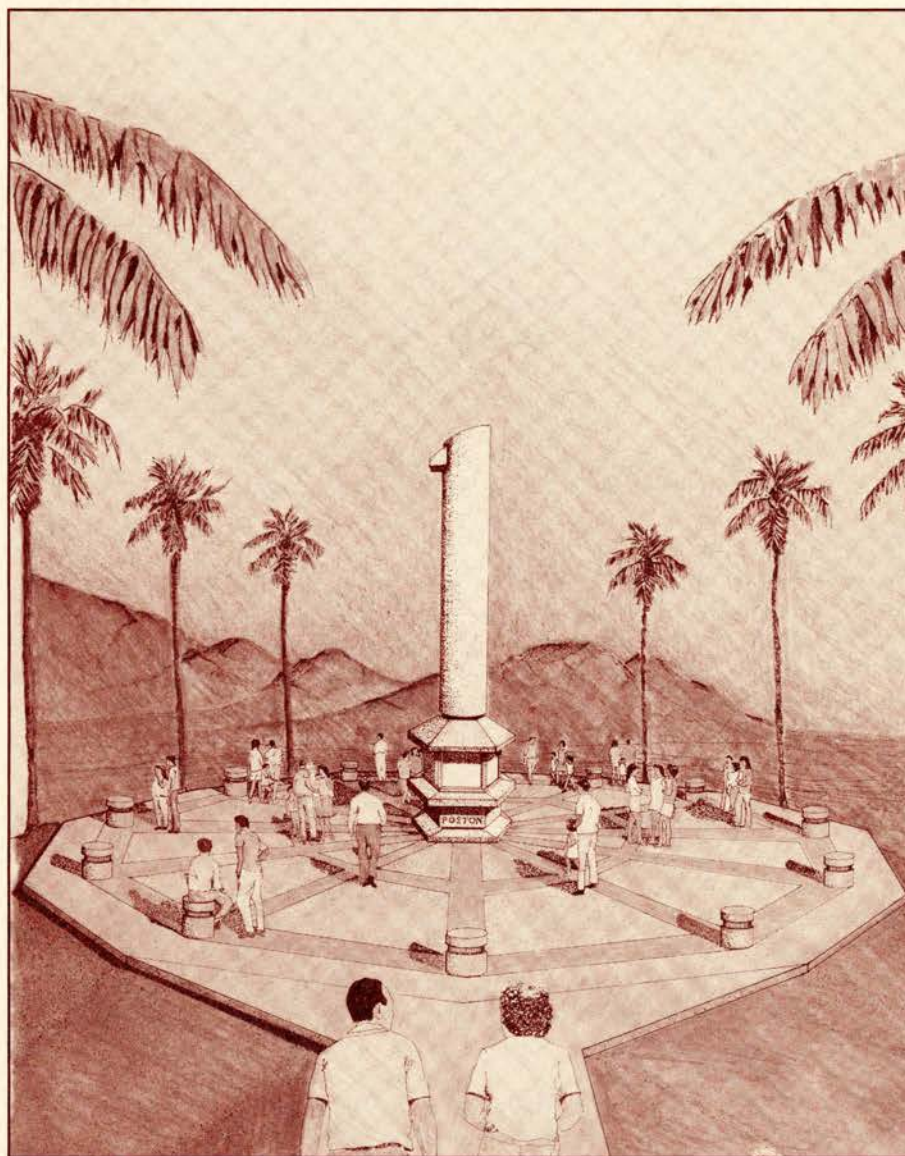
OFFICIAL PROGRAM

POSTON

MEMORIAL MONUMENT DEDICATION

11:00 AM, TUESDAY MORNING

6 OCTOBER 1992



POSTON, ARIZONA

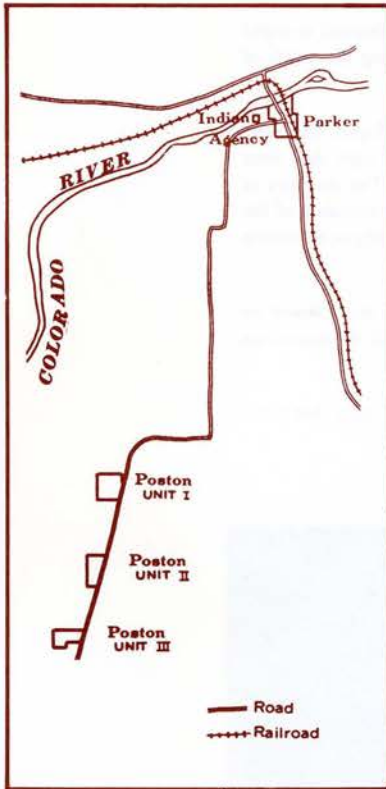
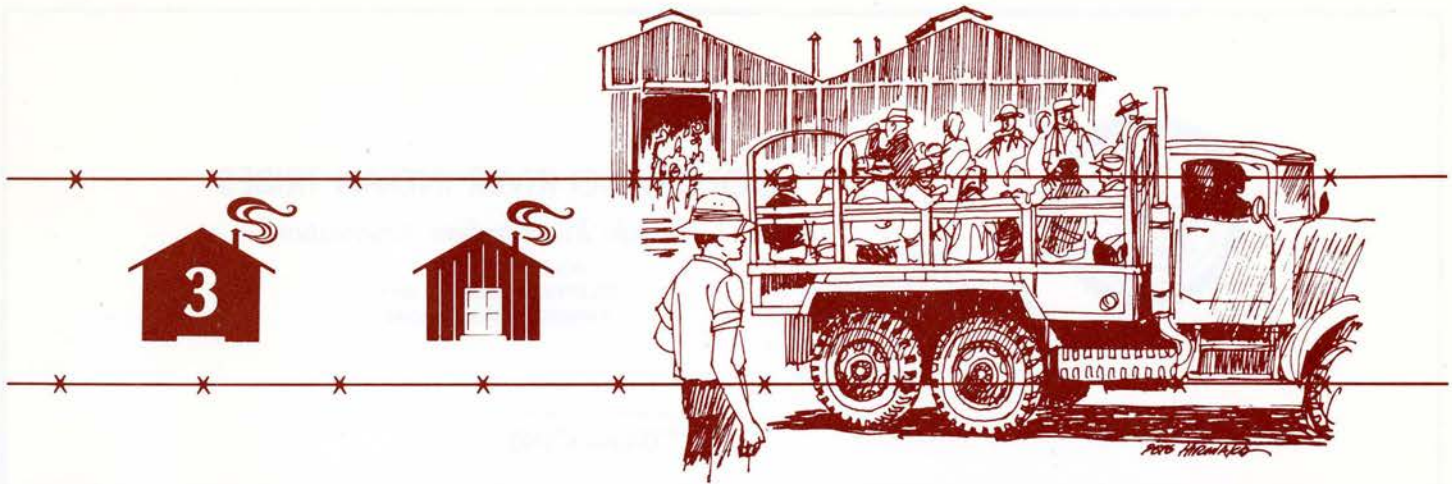
This Official Program
of the
POSTON MEMORIAL MONUMENT DEDICATION
Tuesday, 6 October 1992
Poston, Arizona
is
DEDICATED
TO
TED T. KOBATA
for his professional skill, leadership, tenacity and
use of his many special tools of the construction industry



Ted Kobata (l) and Masayuki Sunahara (r) studying the Poston Memorial Monument Plans.

and
to the "aging" volunteers who toiled with Ted Kobata
in Sacramento and on-site in hot and dry Poston, Arizona.
MASAYUKI SUNAHARA SUSUMU SATOW
 SID ARASE MASAMI IWASA
 JIM KOBATA JIM NAMBA
 NAT OHARA GEORGE S. OKI, SR.
JAMES SAKAMOTO GEORGE K. SATO
 OSCAR SATOW JAMES SUNAHARA
 DUKE TAKEUCHI KAY URUKAWA
 GEORGE YOMOGIDA

*Thank you from all of us for giving us
a magnificent and beautiful monument.*



PROLOGUE . . .

. . . With a sudden lurch the train slowly started to move . . . ever so slowly at first . . . box cars, tankers, flat cars loaded with equipment moved past our window . . . a "breeze" created by the train movement was ever so welcomed as we "sat" in the passenger train for two and a half hours . . . the date: July 19, 1942 . . . the time, 6:17 PM . . . the place, Bakersfield train yard . . . the temperature, 101°F.

. . . MP's ordered the drawing of window shades as we moved out of the train yard . . . crying children . . . complaining adults as the temperature rose in the rickety train . . . a non-descript sandwich was "dinner" . . . coffee, tea or milk . . . the steam whistle whooping . . . the hastening rhythmic clicky clack as the train picked up speed heading east . . . the chugging engine, as we started our climb . . . cards were gradually put away . . . lights out . . . restless sleep . . . then total silence except for snores . . . people talking in their sleep . . . the train stopped . . . Barstow . . . time, midnight.

. . . sometime during the night the train continued eastward . . . the coolness of the desert night . . . the hollow clicky clack as we crossed on the railroad bridge . . . a gradual slowing . . . then stop . . . total silence . . . time 4:17 AM, July 20, 1942 . . .

. . . gradually the first light of the morning . . . someone said we're in Parker, Arizona . . . where's Parker? . . . slowly rising temperature . . . MP's leggings sighted through a crack in the shade . . . more leggings . . . must be hundreds of them out there . . . confined to the trains . . . out of water . . . rapidly rising temperature . . . finally at 10:15 AM we boarded open army trucks . . . caravaned through dust and heat . . . through the break in the dust we passed the MP gate . . . blocks and blocks of barracks . . . mesquites, arrow weeds and sand dunes . . . more barracks . . . hot, arid, dusty, community bathrooms, lousy tasting water . . . somehow we managed to stifle our feelings and sobs . . . so this is Poston . . .

COVER

Sacramento Sansei Architect,
Ray Takata, FAIA, rendering
of the Poston Memorial
Monument.



COLORADO RIVER INDIAN TRIBES

Colorado River Indian Reservation

ROUTE 1, BOX 23-B
TELEPHONE (602) 669-9211
PARKER, ARIZONA 85344

October 6, 1992

To my dear friends:

On this, the Golden Anniversary of the evacuation and internment of the Japanese Americans who were located in the Poston Camps, I am pleased to extend to you greetings of a warm welcome to the land of the Colorado River Indian Tribes.

This year will mark an historical event in which a monument will be constructed and dedicated to stand in time as a reminder to all who shall see it, of the tragic episode which occurred during the years of 1942 through 1945.

During the time of the internment, the majority of the reservation lands were undeveloped and land subjugation and construction of the irrigation system were in the initial stages. So, the sight that your people viewed upon arrival was probably one of a desolate, hot, and brush covered land. The memory of the reservation as it was then is quite a contrast compared to what you see today. The remnants of the internment camps are hardly visible due to ongoing development, however, some small physical objects do remain and probably always will.

As time goes on and takes its toll, the physical remnants will disappear and all that will remain will be the memory of those years in your minds from which the knowledge of this episode will be passed on down to your younger generations.

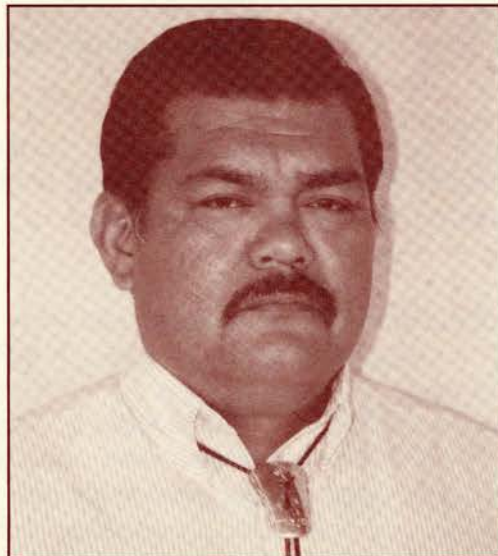
We are pleased to be able to participate with you in your preservation efforts of those years. May this monument stand as a reminder of an act that should never happen again.

Sincerely,

COLORADO RIVER INDIAN TRIBES

A handwritten signature in dark ink, appearing to read "Daniel Eddy, Jr.", written in a cursive style.

Daniel Eddy, Jr., Chairman
Tribal Council





HOUSE OF REPRESENTATIVES
WASHINGTON, D. C. 20515

ROBERT T. MATSUI
3RD DISTRICT, CALIFORNIA

October 6, 1992

Dear Friends:

It is with great pleasure that I recognize the Poston Memorial Monument, not only as a symbol of remembrance, but also as a tribute to those individuals who assisted the Internees selflessly and to the twenty-four brave young men who gave their lives in the line of duty.

These individuals and their actions reflect the nobility, courage and valor of the American Spirit.

Very truly yours,

Robert T. Matsui

ROBERT T. MATSUI
Member of Congress





GOVERNOR PETE WILSON

October 6, 1992



It is with great pleasure that I join today with the former internees of Poston, their families and other guests gathered at the Colorado River Indian Tribes Land at Poston, Arizona as you dedicate the Poston Memorial Monument in honor of the many Japanese-Americans who served as internees at this camp during World War II.

This year marks the fiftieth anniversary of the evacuation, relocation and resettlement of Americans of Japanese ancestry. As a United States Senator, I supported legislation to redress the internment of Japanese Americans and give Americans of all generations the opportunity to know and understand exactly what happened between 1942 and 1945. This Memorial will serve that same purpose.

The Poston Memorial Monument honors the 17,867 men, women and children of Japanese descent who inhabited this camp. It also serves as a constant reminder that no individual should experience the type of unjust and unfortunate treatment received by these internees. We must let this human and political tragedy remind us that all Americans are entitled to the same level of equality and respect. Indeed, among the greatest gifts we can give to our children is to ensure that they learn from our nation's failures.

In addition, this monument pays tribute to the twenty-four young male Poston internees who served in the United States Armed Forces and bravely sacrificed their lives to defend and preserve the liberty of our nation. You can take great pride in knowing that these fine men gave their lives not in vain, but instead with a tireless loyalty and determination to uphold the principles and values for which our country stands.

Mrs. Wilson and I send our very best wishes to you today as you participate in this special dedication. This Memorial Monument should serve to reaffirm every American's obligation to stand for justice and values that make America worth fighting for.

Sincerely,

PETE WILSON

STATE CAPITOL • SACRAMENTO, CALIFORNIA 95814



Secretary of State

SACRAMENTO 95814

October 6, 1992

George S. Oki, Sr., Co-Chair
Poston Memorial Monument Committee
P. O. Box 277118
Sacramento, CA 95827

Dear Friends:

I am delighted to have this opportunity to extend greetings to you on the occasion of the dedication of the Poston Memorial Monument.

I commend the committee on its many accomplishments and dedicated efforts in creating this monument in honor of the 50th year observance of the evacuation and internment of the Japanese-Americans and for your recognition of the men who gave their lives in service to this country.

Please accept my best wishes for a most successful event.

Sincerely,





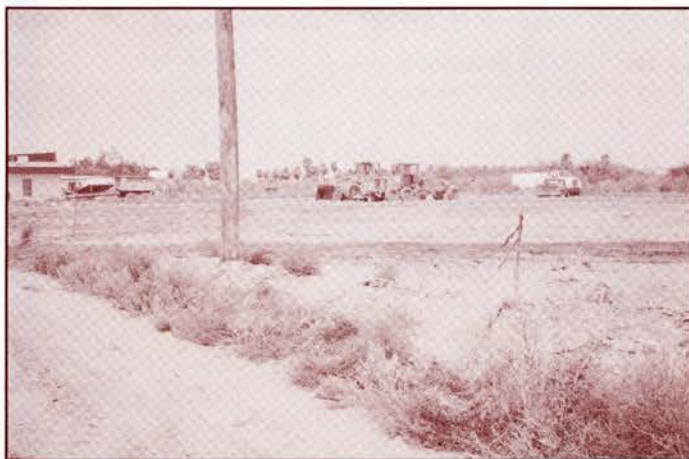
*Summer 1991,
Hannah Satow and
Osame Doi find the
only remains of
Camp III.*



*April 30, '92, George
Oki, Ted Kobata,
Hannah Satow
discuss plans with
CRIT Director of
Planning Ron Moore.*



*July 28, '92, "Hutch"
Hutchinson, Ted and
Ron Moore site
preparation begins.*



*July 28, at the close
of the first day the
plaza begins to take
shape.*

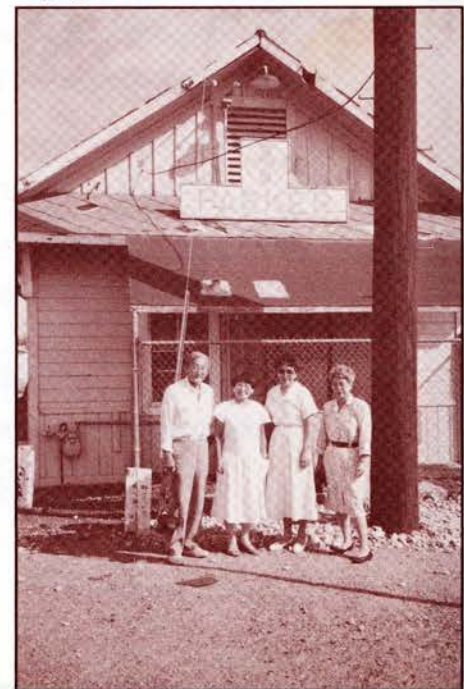
In the beginning...

Poston Memorial Monument

During the Poston II reunion in the fall of 1989 in Monterey, an embryo of an idea to build the Poston Memorial Monument was hatched. Dialogue with the Colorado River Indian Tribes (CRIT) was established.

Hodge Kawakasaki, a retired architect, prepared the initial plan of a very conservative monument. At the suggestion of Hodge, Ray Takata, FAIA, was asked to prepare a monument in observance of the 50th year of evacuation and internment. On July 28, 1992, site preparation began with Ted Kobata in complete charge.

*G.S. Oki, Bessie Hamakawa, Hannah
Satow and Osami Doi pose in front of
"aging" Parker Train Station.*





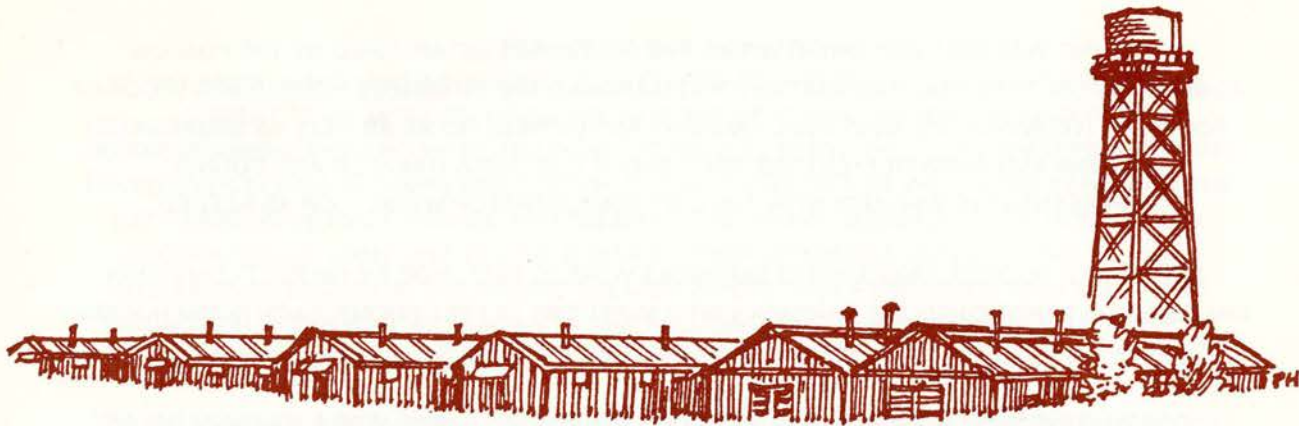
POSTON

THIS MEMORIAL MONUMENT MARKS THE SITE OF THE POSTON WAR RELOCATION CENTER WHERE 17,867 PERSONS OF JAPANESE ANCESTRY, THE MAJORITY OF WHOM WERE UNITED STATES CITIZENS, WERE INTERNED DURING WORLD WAR II. FROM MAY 1942 TO NOVEMBER 1945, ALL PERSONS OF JAPANESE DESCENT LIVING ON WEST COAST FARMS, BUSINESSES, TOWNS, CITIES AND STATES WERE FORCIBLY EVACUATED BY THE UNITED STATES MILITARY ON THE GROUNDS THAT THEY POSED A THREAT TO THE NATIONAL SECURITY. THIS MASSIVE RELOCATION WAS AUTHORIZED BY EXECUTIVE ORDER 9066, SIGNED BY PRESIDENT FRANKLIN D. ROOSEVELT ON FEBRUARY 19, 1942.

THIS MEMORIAL IS DEDICATED TO ALL THOSE MEN, WOMEN AND CHILDREN WHO SUFFERED COUNTLESS HARDSHIPS AND INDIGNITIES AT THE HANDS OF A NATION MISGUIDED BY WARTIME HYSTERIA, RACIAL PREJUDICE AND FEAR. MAY IT SERVE AS A CONSTANT REMINDER OF OUR PAST SO THAT AMERICANS IN THE FUTURE WILL NEVER AGAIN BE DENIED THEIR CONSTITUTIONAL RIGHTS AND MAY THE REMEMBRANCE OF THAT EXPERIENCE SERVE TO ADVANCE THE EVOLUTION OF THE HUMAN SPIRIT.

THIS MEMORIAL MONUMENT IS ERECTED IN COOPERATION WITH THE COLORADO RIVER INDIAN TRIBES, FORMER INTERNEES OF POSTON, VETERANS AND FRIENDS OF THE FIFTIETH YEAR OBSERVANCE OF THE EVACUATION AND INTERNMENT.

OCTOBER 6, 1992



POSTON

EVACUATION

PRESIDENT FRANKLIN D. ROOSEVELT SIGNED EXECUTIVE ORDER 9066 ON FEBRUARY 19, 1942. THIS EXECUTIVE ORDER AUTHORIZED THE SECRETARY OF WAR OR ANY MILITARY COMMANDER DESIGNATED BY THE SECRETARY TO ESTABLISH ZONES FROM WHICH ANY OR ALL PERSONS COULD BE EXCLUDED OR EVACUATED. 120,000 PERSONS OF JAPANESE ANCESTRY LIVING IN STRATEGIC WESTERN STATES WERE EVACUATED AND INTERNED BY MILITARY LAW IN FIFTEEN (15) WARTIME CIVILIAN CONTROL ADMINISTRATION (WCCA) CENTERS. THESE HASTILY BUILT DETENTION CENTERS WERE, IN MOST CASES, EITHER FAIR GROUNDS OR RACE TRACKS THAT WERE SURROUNDED BY BARBED WIRE FENCES AND PLACED UNDER HEAVY MILITARY SURVEILLANCE BY ARMED U.S. SOLDIERS.

WAR RELOCATION AUTHORITY

ON MARCH 18, 1942, PRESIDENT FRANKLIN D. ROOSEVELT SIGNED EXECUTIVE ORDER 9102, ESTABLISHING THE WAR RELOCATION AUTHORITY (WRA). THE WRA WAS A CIVILIAN AGENCY CHARGED WITH OVERSEEING THE MILITARY EVACUATION AND INTERNMENT OF AMERICANS OF JAPANESE ANCESTRY. THE WRA DEFINED A WAR RELOCATION CENTER AS A PIONEER COMMUNITY WITH BASIC HOUSING AND PROTECTIVE SERVICES PROVIDED BY THE FEDERAL GOVERNMENT FOR THE INTERNEES FOR THE DURATION OF WORLD WAR II.

POSTON

POSTON WAS ONE OF THE TEN (10) WRA CENTERS CONSTRUCTED IN 1942. IT WAS PLANNED IN COOPERATION WITH THE U.S. INDIAN SERVICE, AS IT WAS SITED ON THE COLORADO RIVER INDIAN RESERVATION, A HOT AND ARID AREA OF ARIZONA. POSTON WAS BUILT AS THREE SEPARATE UNITS (POSTON UNIT I, II AND III). THE FACILITY WAS NAMED AFTER CHARLES POSTON, A GOVERNMENT ENGINEER WHO PLANNED AN IRRIGATION SYSTEM TO SERVE THE NEEDS OF THE INDIAN PEOPLE ALONG THE COLORADO RIVER. WADE HEAD, THE SUPERINTENDENT OF THE PAPAGO INDIAN RESERVATION OF ARIZONA, WAS APPOINTED POSTON PROJECT DIRECTOR. THE INTERNEES WITH THEIR LIMITED BAGGAGE BEGAN TO ARRIVE ON MAY 8, 1942 AND BY AUGUST 1942, THE POPULATION PEAKED AT 17,867. ALMOST OVERNIGHT POSTON BECAME ARIZONA'S SECOND LARGEST CITY.

POSTON (CONTINUED)

EACH UNIT WAS SELF-GOVERNED WITHIN THE GUIDELINES ESTABLISHED BY THE POSTON ADMINISTRATOR. THE COMMUNAL UNIT REVOLVED AROUND THE INTERNEES HOUSED IN A BLOCK OF FOURTEEN (14) BARRACKS, MESS HALL, LAUNDRY AND IRONING ROOM, AS WELL AS SEGREGATED LATRINE AND SHOWER FACILITIES. EACH BLOCK ELECTED A MANAGER AND COUNCIL REPRESENTATIVE WHO MET WITH THE UNIT ADMINISTRATOR WEEKLY, OR AS NEEDED.

THE DOUBLE ROOFED, TAR PAPERED BARRACKS WERE 20 FEET WIDE BY 100 FEET LONG. THIN WALL BOARDS PARTITIONED THE BARRACKS INTO 20 FEET BY 24 FEET ROOMS, EACH ROOM HOUSING A FAMILY OF UP TO EIGHT INTERNEES.

THOSE WHO WORKED WERE PAID FOR A 48-HOUR WORK WEEK. THERE WAS A MAXIMUM SALARY OF \$19.00 PER MONTH FOR PROFESSIONALS, SUCH AS DOCTORS, MANAGERS, AND TEACHERS; \$16.00 PER MONTH FOR BLUE COLLAR WORKERS, COOKS, BAKERS, TRUCK AND TRACTOR DRIVERS AND WAREHOUSEMEN; AND \$12.00 PER MONTH FOR LABORERS.

HEALTH CARE WAS PROVIDED BY INTERNEE MEDICAL DOCTORS, DENTISTS, PHARMACISTS, NURSES AND NURSES AIDES. A HOSPITAL WAS MAINTAINED IN UNIT I AND CLINICS IN BOTH UNITS II AND III.

SCHOOL ADMINISTRATORS AND TEACHERS WERE HASTILY RECRUITED FROM THROUGHOUT AMERICA, BUT MANY OF THE INSTRUCTORS WERE INTERNEES WHO WERE EITHER COLLEGE STUDENTS OR HIGH SCHOOL GRADUATES. CLASSES RANGED FROM PRE-SCHOOL THROUGH TWELFTH GRADE. INITIALLY, CLASSES WERE HELD IN DESIGNATED EMPTY BARRACKS. LATER, CLASSES WERE HELD IN ADOBE SCHOOL BUILDINGS CONSTRUCTED WITH BRICKS MADE BY THE INTERNEES. ADULT EDUCATION CLASSES IN ENGLISH WERE PROVIDED FOR THE ISSEI, FIRST GENERATION JAPANESE-AMERICANS, AND WERE VERY WELL ATTENDED.

MANY INTERNEES BROUGHT WITH THEM PACKETS OF GARDEN AND VEGETABLE SEEDS. THE SMALL GARDEN PLOTS BETWEEN THE BARRACKS WERE SO SUCCESSFUL THAT A FULL-SCALE IRRIGATED FARMING PROGRAM WAS INSTITUTED. THE HARVEST FROM THESE FARMS YIELDED BOUNTIFUL CROPS OF MELONS AND ASSORTED VEGETABLES. A CHICKEN RANCH AND A HOG FARM WERE ALSO SUCCESSFULLY ESTABLISHED AND MAINTAINED.

AS INTERNEES SETTLED INTO THE ROUTINE OF CAMP LIFE, SPIRITUAL LIFE WAS STRENGTHENED. CHURCH SERVICES WERE CONDUCTED FOR BUDDHISTS, CHRISTIANS AND THOSE OF OTHER FAITHS.

IN ORDER TO COPE WITH THE BOREDOM OF CONFINEMENT, INTERNEES SEARCHED FOR AND DEVELOPED MANY PURSUITS. TALENTS WERE UNLEASHED TO CREATE MANY PAINTINGS, HAIKU, AND OTHER WORKS OF ART. PERIODIC TALENT SHOWS AND MOVIES PROVIDED ENTERTAINMENT. BASEBALL AND BASKETBALL WERE THE TWO MOST POPULAR SPORTS WITH COMPETITIVE BLOCK TEAMS VYING FOR UNIT AND ALL-POSTON CHAMPIONSHIPS. A WEEKLY NEWSLETTER WAS PUBLISHED TO GIVE INSTRUCTIONS AND TO REPORT EVENTS WITHIN EACH CAMP UNIT.

POSTON (CONTINUED)

SERVICE TO OUR COUNTRY

IN 1943, MORE THAN 1,200 INTERNEES VOLUNTEERED TO SERVE WITH THE 442ND REGIMENTAL COMBAT TEAM. MOST OF THESE VOLUNTEERS WERE NISEI, SECOND GENERATION JAPANESE-AMERICANS WHO WERE AMERICAN CITIZENS BY BIRTH. THEY LEFT THEIR PARENTS AND LOVED ONES BEHIND IN CAMPS LIKE POSTON TO FIGHT AND DIE FOR THE UNITED STATES ON THE BATTLEFIELDS OF ITALY, FRANCE AND GERMANY. THE 442ND EMERGED AS THE MOST HIGHLY DECORATED U.S. ARMY UNIT IN WORLD WAR II. OTHER INTERNEES SERVED IN THE MILITARY INTELLIGENCE SERVICE IN THE PACIFIC THEATER WHERE THEY PERFORMED WITH VALOR AND DISTINCTION IN THE WAR WITH JAPAN. IN THE FALL OF 1943, THE NISEI BECAME DRAFTABLE AS THEIR SELECTIVE SERVICE CLASSIFICATION WAS CHANGED FROM 4-C, ENEMY ALIEN, TO 1-A.

NISEI MEN AND WOMEN SERVED IN NEARLY EVERY THEATER OF OPERATIONS WITH HONOR, COURAGE AND PRIDE TO HELP PROTECT AND PRESERVE FOR ALL AMERICANS THE SAME CONSTITUTIONAL FREEDOMS THAT WERE, AT THAT VERY TIME, BEING DENIED THEM AND THEIR FAMILIES.

RESETTLEMENT

IN THE FALL OF 1942, MANY INTERNEES RESPONDED TO THE URGENT CALL FOR WORKERS TO ASSIST IN THE HARVEST OF THE SUGAR BEET CROP IN THE MOUNTAIN STATES. ANOTHER VANGUARD OF THE RESETTLEMENT WERE COLLEGE BOUND STUDENTS WHO WERE ASSISTED BY THE NATIONAL STUDENT RELOCATION COUNCIL, THE AMERICAN FRIENDS OF SERVICE COMMITTEE AND NUMEROUS INDIVIDUALS. IN 1943 MANY INTERNEES RESETTLED IN THE MOUNTAIN, MIDWEST AND EASTERN REGIONS OF THE U.S. FOR EMPLOYMENT AND A BETTER WAY OF LIFE.

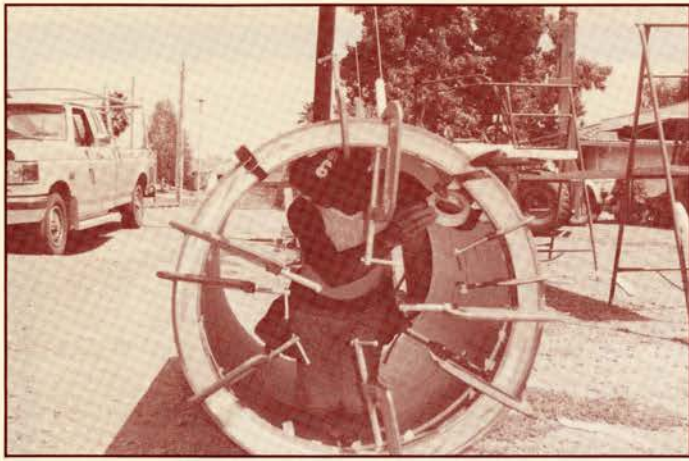
ON DECEMBER 17, 1944, THE WAR DEPARTMENT ANNOUNCED THE REVOCATION OF THE WEST COAST EXCLUSION ORDERS FOR THE PEOPLE OF JAPANESE ANCESTRY EFFECTIVE JANUARY 2, 1945. THE FOLLOWING DAY, WRA DIRECTOR, DILLON S. MYER, ANNOUNCED THE CLOSURE OF ALL WRA CENTERS BY DECEMBER 31, 1945 AND THE ABOLISHMENT OF THE ENTIRE WRA PROGRAM BY JUNE 30, 1946.

1992

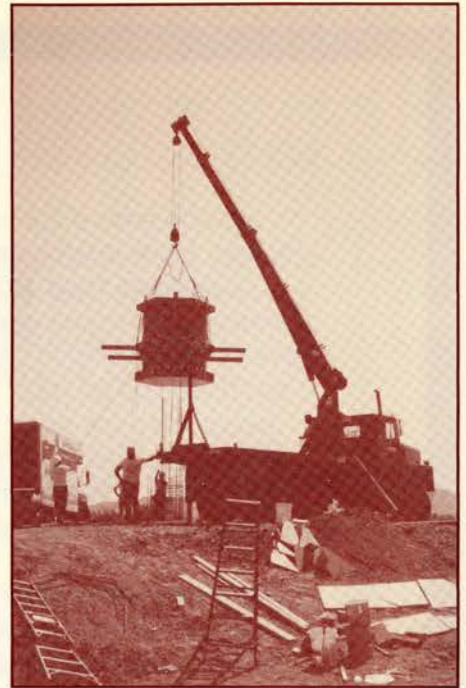
DURING THE FIVE DECADES FOLLOWING WORLD WAR II, THE COLORADO RIVER INDIAN RESERVATION HAS BEEN TRANSFORMED INTO A BLOOMING GARDEN BY A SERIES OF INNOVATIVE IRRIGATION AND HYDROELECTRIC PROJECTS. STILL THE HOME OF THE COLORADO RIVER INDIAN TRIBES, IT NOW STANDS AS A TRIBUTE TO ARIZONA'S BRIGHT AGRICULTURAL FUTURE. VERY LITTLE REMAINS TO REMIND THE PUBLIC OF WHAT TOOK PLACE IN THIS PEACEFUL VALLEY FIFTY YEARS AGO, WHEN THOUSANDS OF AMERICANS OF JAPANESE ANCESTRY WERE TAKEN FROM THEIR HOMES, NUMBERED, TAGGED AND THEN HERDED INTO PLACES LIKE POSTON WHERE THEY WERE HELD CAPTIVE BY THEIR OWN COUNTRY UNTIL THE UNITED STATES GOVERNMENT FINALLY REALIZED THE FULL MORAL AND LEGAL IMPLICATIONS OF WHAT IT HAD DONE TO ITS OWN CITIZENS.

HENCE, WHAT HAPPENED IN POSTON DURING THOSE FEW YEARS, 1942-1945 SHOULD BE A CONSTANT REMINDER THAT ALL AMERICANS WITHOUT QUALIFICATION OR EXCEPTION HAVE THE CONSTITUTIONAL RIGHTS TO LIVE IN THAT SOCIETY GOVERNED BY REASON AND LAW AND BY TRUTH AND JUSTICE.

OCTOBER 6, 1992



George Yomogida works on a complex design on the 3 feet diameter shaft tube form.



Unloading the monument form in Poston.



Ray Takata, FAIA, Ted, Masami Iwasa, Sid Arase and Kay Urukawa at work.



Monument form in place. Ted inspects for true position with Sid Arase.

L-R: Duke Takeuchi, Sus Satow, Jim Kobata, Ted, Sid Arase, Mas Sunahara, Jim Namba and Nat Ohara preparing to leave for Poston.



Ready to leave.



**Corporate &
Organization Donors**

Sacramento JACL
Mike Sawamura, President

Florin JACL
Andy Noguchi, President

Poston III Reunion
San Diego

Classic Trophy
Lee Shapiro

Tom's Printing
Daniel Tom

Takehara Landscape
Brian Takehara

Sacramento Valley Insurance
Tom Hobday

Higashi Farms
George & Janice Higashi

Meta Information Service
Kent Hymas

Oki Nursery Co.
George Jr. & Lorence Oki

Sacramento Tofu
Alvin & Dorothy Kunishi

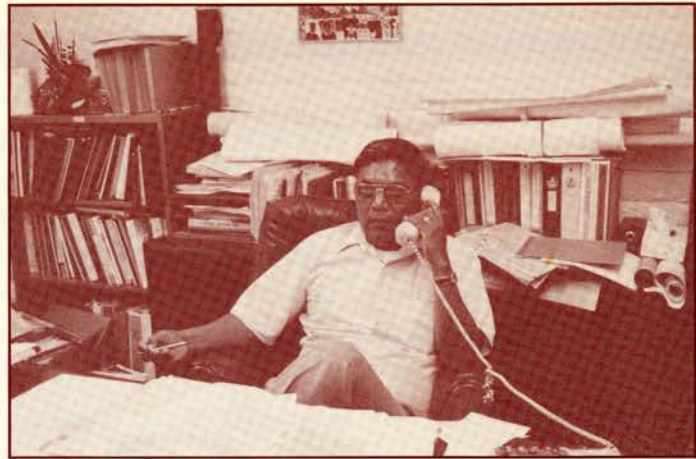
Kobata Construction
Ted Kobata

Yomogida Construction
George Yomogida

Union Bank
Ray Kozuma

*Individual donor list
begins on page 17.*

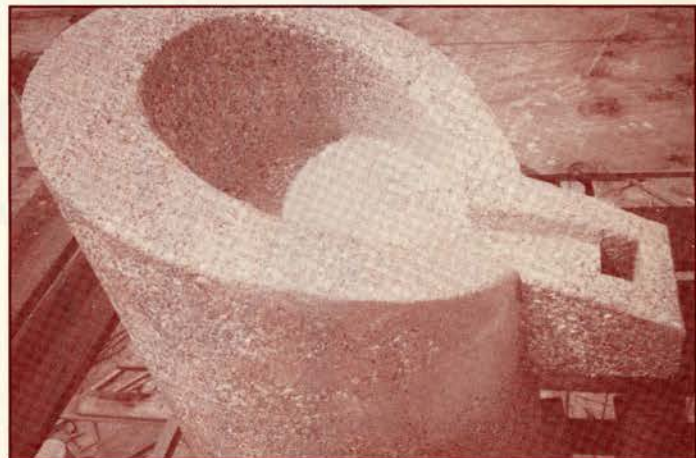
*Ron Moore, liaison,
CRIT Director of
Planning, a most
helpful friend.*



*Member names of the
"aging" work crew
written in concrete.*



*The top of the
monument. A
bird's eye view.*



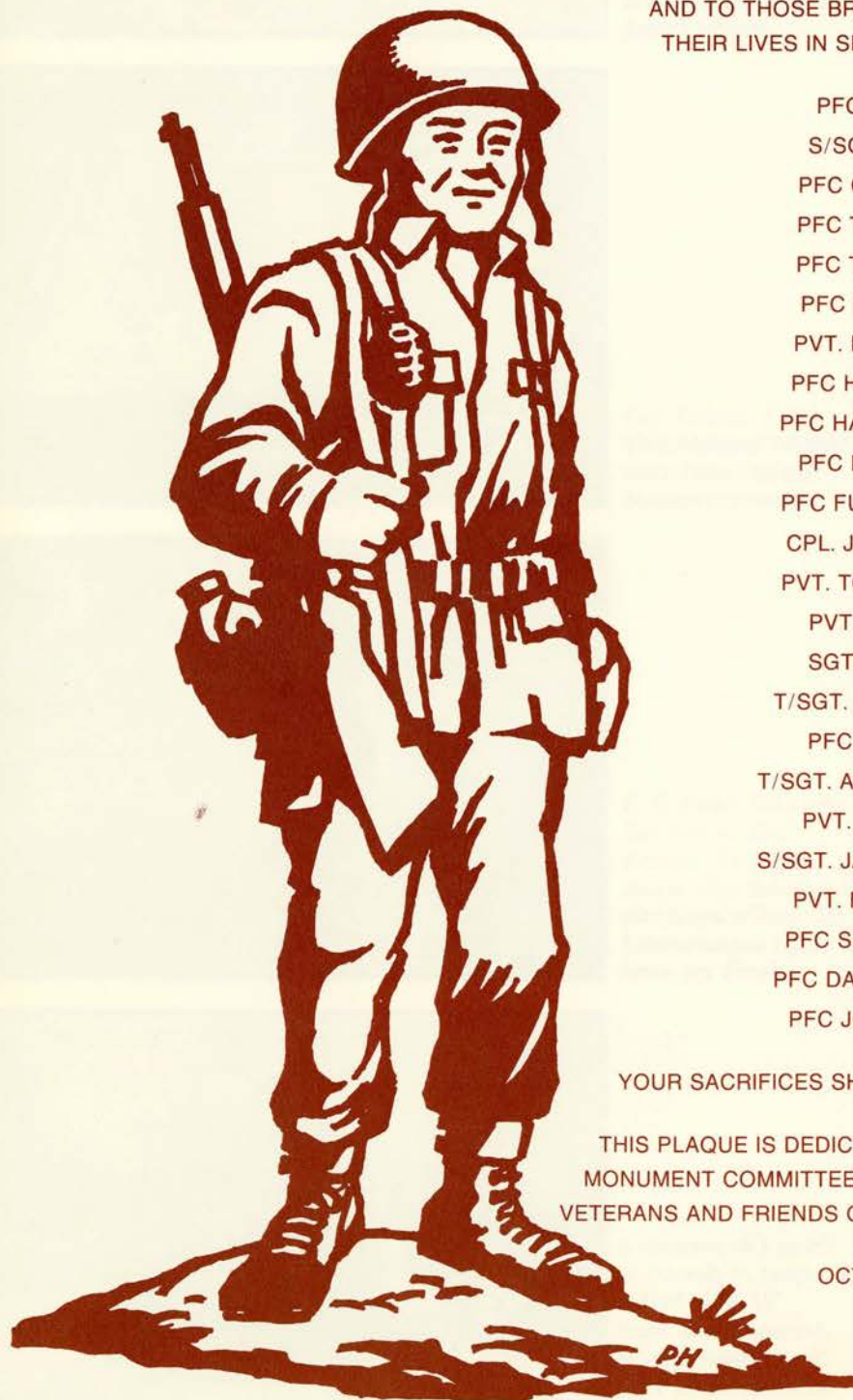
*Tricia Oki presents a
bouquet of flowers to
'91 Miss Indian
Arizona Karla Starr
and Poston hats to
'92 contestants. First
official function
September 23, 1992.*



TRIBUTE

TO ALL MEN AND WOMEN WHO HONORABLY SERVED IN THE UNITED STATES ARMED FORCES IN DEFENSE OF THIS NATION AND ITS PEOPLE, PARTICULARLY TO THOSE AMERICANS OF JAPANESE ANCESTRY, WHO, DURING WORLD WAR II, FOUGHT SO VALIANTLY FOR THEIR COUNTRY WHILE THEIR PARENTS AND FAMILIES WERE BEING INTERNED IN THE POSTON WAR RELOCATION CENTER WITHOUT DUE PROCESS OF LAW.

AND TO THOSE BRAVE YOUNG MEN WHO GAVE THEIR LIVES IN SERVICE TO THEIR COUNTRY:



PFC HIROO ENDO
S/SGT. ABE M. FUJI
PFC CHARLES FUJIKI
PFC TADAO HAYASHI
PFC TORAO HAYASHI
PFC PAUL HORIUCHI
PVT. EUGENE INOUYE
PFC HENRY IZUMIZAKI
PFC HARRY MADOKORO
PFC HACHIRO MUKAI
PFC FUMITAKE NAGATO
CPL. JOHN NARIMATSU
PVT. TOM T. NISHIMOTO
PVT. KONGO NITTA
SGT. JOHN OGAWA
T/SGT. ABRAHAM OHAMA
PFC LLOYD ONOYE
T/SGT. ATSUSHI SAKAMOTO
PVT. JOE SHIOMICHI
S/SGT. JAMES K. SHIRAMIZU
PVT. MICHIO TESHIMA
PFC SHICHIZO TOYOTA
PFC DANIEL TSUKAMOTO
PFC JOHN YAMAMOTO

YOUR SACRIFICES SHALL ALWAYS BE REMEMBERED.

THIS PLAQUE IS DEDICATED BY THE POSTON MEMORIAL MONUMENT COMMITTEE, FORMER INTERNEES OF POSTON, VETERANS AND FRIENDS OF THE FIFTIETH YEAR OBSERVANCE.

OCTOBER 6, 1992

POSTON MONUMENT DEDICATION PROGRAM

Colorado River Indian Reservation

Poston, Arizona

11:00 AM, 6 October 1992

10:30 AM	CONCERT:	John Woody, Band Master	Parker High School Band
11:00 AM	OPENING CEREMONY:	Rev. Tom Kurai Masakazu Yoshizawa	Taiko Dan Shakuhachi
	MOHAVE BIRD DANCE:	Mohave Indian Tribe	
	OPENING REMARKS:	George S. Oki, Sr.	Master of Ceremonies
	POST COLORS:	Color Guard Capt. Duane A. Dannewitz	Ft. Huachuca, U.S. Army Honor Guard Detachment
	PLEDGE OF ALLEGIANCE:	Dale E. Howard	Commander American Legion Freeman Sharp Post #70
	INVOCATION:	Rev. Lloyd K. Wake, Ret.	Glide Memorial Methodist Church San Francisco, CA
	AMERICA THE BEAUTIFUL:	Sachiye Endo Sugita	
	INTRODUCTIONS:	George S. Oki, Sr.	
	GREETINGS:	Daniel Eddy Jr., Chair Kei Higashi George K. Ikeda Katsumi J. Takashima Rudy Tokiwa	Colorado River Indian Tribes Camp I Camp II Camp III WWII Nisei Veterans
	MOHAVE BIRD DANCE:	Tommie Miller Tashina Sky Harper	Ms. CRIT Little Ms. CRIT
	SPEAKER:	Hon. Robert T. Matsui	Congressman, California 3rd District
	UNVEILING ANNOUNCEMENTS:		
	TRIBUTE:	Osame Doi, Joanne Iritani Richard "Babe" Karasawa	
	21 GUN SALUTE:	Honor Guard Capt. Duane A. Dannewitz	Ft. Huachuca, U.S. Army Honor Guard Detachment
	TAPS:	Bugler	
	BENEDICTION:	Rev. Marvin Harada	Orange County Buddhist Church
	RETRIEVAL OF COLORS:	Color Guard	Ft. Huachuca, U.S. Army
	RECESSIONAL:	John Woody, Band Master	Parker High School Band
	CLOSING CEREMONY:	Rev. Tom Kurai Masakazu Yoshizawa	Taiko Dan Shakuhachi
12:00 Noon	FINIS		

SINCERE APPRECIATION AND GRATITUDE TO

... THE COLORADO RIVER INDIAN TRIBES FOR THEIR KIND COOPERATION AND IN PROVIDING THIS LAND TO BUILD AND ERECT THE POSTON MEMORIAL MONUMENT.

DANIEL EDDY, JR., CHAIRMAN
RUSSELL WELSH, VICE CHAIRMAN
JAMES R. ALCAIDA, SECRETARY
ELDRED ENAS, TREASURER

AND

COUNCIL MEMBERS:
CONNOR BYESTEWA, JR.
HERMAN D. LAFFOON, JR.
LAWANDA E. LAFFOON
DENNIS R. PATCH
RAYFORD H. PATCH

... THE MANY ORGANIZATIONS, MEN, WOMEN AND CHILDREN WHO ASSISTED THE JAPANESE-AMERICANS PHYSICALLY AND SPIRITUALLY DURING THOSE DARK HOURS OF EVACUATION AND INTERNMENT.

... THE MANY INDIVIDUALS WHO CAME TO THE WAR RELOCATION CENTERS AS ADMINISTRATORS, MANAGERS, SUPERVISORS, PRINCIPALS AND TEACHERS AND HELPED THE INTERNEES MAKE THE BEST OF THE TRYING CONDITIONS OF INTERNMENT.

... THE MANY ORGANIZATIONS AND NEWLY FOUND FRIENDS AND PEOPLE THROUGHOUT AMERICA WHO MADE RESETTLEMENT EASIER AND LESS PAINFUL.

... THE PERSONS AND ORGANIZATIONS WHO FOUGHT FOR THE RIGHTS OF AMERICANS OF JAPANESE ANCESTRY FOR CITIZENSHIP AND CIVIL RIGHTS AS MANDATED BY THE CONSTITUTION OF THE UNITED STATES OF AMERICA.

... RAY TAKATA, FAIA, DESIGN OF THE POSTON MEMORIAL MONUMENT.

... STEPHEN HAMAMOTO, CE, ENGINEERING.

... PETE HIRONAKA, ART AND DESIGN.

... TED KOBATA, KOBATA CONSTRUCTION, AND THE MANY VOLUNTEERS FOR THE CONSTRUCTION AND ERECTION OF THIS MONUMENT.

... TOM TAKEHARA AND TAKEHARA LANDSCAPE, DESIGN AND INSTALLATION OF THE IRRIGATION SYSTEM AND LANDSCAPE.

... RON MOORE, LIAISON; DIRECTOR, DEPARTMENT OF PLANNING, COLORADO RIVER INDIAN TRIBES.

... THE MANY PERSONS AND ORGANIZATIONS FOR THEIR ENCOURAGEMENT AND THEIR FINANCIAL CONTRIBUTIONS TO BUILD THIS POSTON MEMORIAL MONUMENT.

THANK YOU FROM ALL OF US
AND
THE POSTON MEMORIAL MONUMENT COMMITTEE

CO-CHAIRS:
GEORGE S. OKI, SR.
KEI HIGASHI HANNAH SATOW
MASATO ASAKAWA KIYO SATO-VIACRUCIS

OCTOBER 6, 1992

POSTON MEMORIAL FUND CONTRIBUTORS BY CATEGORY

Anonymous
Mrs. T. (Kikuye) Masuda

Paul Arakawa
Chapter JACL Sacramento

CATEGORY 6

JACL Florin Chapter
III Reunion Comm. San Diego Post

Michi Kato
Takao & Lilly Tanabe

John & Lorraine Hayashi
Martin Ito
George & Joan Oki

Higashi Farms Inc
George & Marilyn Korenaga
Roy & Sayuri Takeda

CATEGORY 5

Macky and May Higashiyama
George & Teruko Makishima

Frank & Taeko Joann Iritani
Doreen Nakasako

Chiyo Aiso
Tony & Sally Nakazaki
Dr. Minoru & Emiko Yamate

Arthur & Osame Doi
Ichiro & Sanaye Onoye
Mrs. Miyoko Yuki

CATEGORY 4

Robert & Aiko Endo
George Oshima

Kei Higashi
Rudy Tokiwa

Ted & Tomiko Akahori
Eddie and Dora Ando
Taro Asami
Will & Agnes Deguchi
Suye Fujikawa
Yeaji & Midori Fujino
Mike Furusho
Aiko Hanami
Masateru & Mitsue Hashimoto
Art Hayashida
George & Nora Hirano
Clara & Dr. Hideo Hirose
George & Ruth Hiyane
Fred & Ruby Ida
Mickey and Akiko Inagi
Seiso Ishizue
Sakiko Kakimoto
Thomas & Yaye Karasawa
Thomas and Marjorie Kawakami
Jim & Sally Kishi
George Koga
Toyoko Kubota
Craig and Cathy Makishima
Phillip Marshall
Larry & Dorothy Matsumoto
William M. Matsumoto
Takako Yagi Minamide
Gordon & Alice Miyamoto
Ray & Mitsuye Mori
Mr & Mrs Paul Murata
Charles & Jean Nakama
John & Mary Nishimura
Kenneth & Atsuko Ogawa
Ichiro Okada
Edith Oshita
Paul & Flossie Requiman
Joe Saiki
Shigeru Sano

Hodge & May Amemiya
Anonymous
Marydel G Balderstow
Paul & Maria Dohi
Jack & Kimi Fujiki
Fujiko Fujisawa
Sadako Furvike
Arthur & Catherine Harris
Duke & Pauline Hatakeda
George/Janice Higashi
Shig & Kikuye Hirano
Dr. Tomio & Doris Hirota
Betty Hochi
Yukio Ide
Takaji & Margaret Inouye
Takao Iwasa
Robert Kanagawa
Warren & Karen Kashiwagi
James & Shizue Kawamoto
David & June Kitagawa
Mitsuko Kohatsu
Alyce Kuranaga
Royce Makishima
Yukio & Masae Maruyama
Lester & Helen Matsumoto
Jack Matsuoka
Thomas & Bonnie Minamide
John Mizoguchi
Shige & Rose Morimune
Fred Nabeta
Tommy & Kazuko Nakayama
George & Jane Noda
Karl Oike
Ken & Kay Keiko Onishi
Aiko Owashi
Orville & Jane Rouzer
James Sakamoto
George & Alice Santo

CATEGORY 3

Ann Amioka
Minoru Sam & Anna Araki
Natsuko & Ann Chiba
Lee C. Jr. & Martha Dohm
Thomas & Dorothy Fujiki
Manabu & Tomiko Fukuda
Keiji & Mary Futamase
James & Ryo Hashiguchi
Mas & Violet Hatano
Keiko Hosokawa Hill
Robert Hiratsuka
Family Hirota
Tom & Mary Honma
Sue Sumiye Ichori
Tatsushi & Aiko Ishida
Arthur & Amy Izumizaki
Milton & May Kanatani
Gary & Michie Kato
Harry & June Kawamura
Rod & Tomi Kobara
Barry & Karen Kondo
Tats & June Kuwahara
Royal & Hiroko Manaka
George & Chiyoko Masumoto
Ritsuye Matsumoto
Dallas & SHiroi McLaren
Donald & Elaine Miyagi
Kazuo Mizutani
Alice & Mas Morita
Toshimitsu & Lorraine Nagae
Jim H. Namba
Moriaki "Mo" & Nellie Noguchi
Itsumi Jack Oita
Ernest & Ruth Ono
Dr. William & Elaine Ozawa
Louise Sagata
Hatsuye Sako
Hideo & Kisa Sasaki

Betty M. Amioka
Moto & Florence Asakawa
Frank and Betty Deguchi
Laura & Art Fizer
Charles & Annunziata Fujimoto
Dr. Tetsuo & Sarah Furuike
Yoshio & Mina Goto
Katsumi & Dorothy Hashimoto
Shuki & Marian Hayashi
Sally Endo Hirai
Mitsuji & Tokie Hironaka
James Hirota
Masaru Horiuchi
Hiyoshi & Nellie Imoto
Moffet & Thelma Ishikawa
Kinaya & Brenda Iiyama
Richard Karasawa
Brothers Kawaguchi
Darlene Kishi
Ted & Miyo Kobaza
Mrs. Hisano Koyama
John & Tomi Maeno
Tim and Marian Manaka
Dr. Kenneth & June Matsumoto
Sakaye Matsumoto
Hiro & Chiz Mifune
Helen Miyake
Lee Mizutani
Tom & Harumi Murakami
Yae Nagai
Masao Nishimi
Mike Nomi
Herbert & Sue Okada
Kazu Oshima
Quad Reunion Postoni
Scott Sagawa
Akiko Sakuma
Rakumi Sasaki

POSTON MEMORIAL LIST BY CATEGORY

CATEGORY 3

Iseyo, Ken & Taniguchi, Amy Satake
 Kiyoo Sato-Viacrucis
 Oscar & Lillian Satow
 Kazuo & Marion Shigaki
 Sam & Misao Shiotsuka
 Akira & Jacque Soda
 Clyde & Emma Stewart
 Masayuki & May Sunahara
 Mary Takagaki
 Katsumi & Yoshiko Takashima
 Dr. Masao & Aiko Takeshita
 Clare Tamura
 Mrs. Toshiko Tanaka
 Robert Tanimura
 Dr. Theodore & Sadie Tsuyuki
 Kay & Fusaye Urakawa
 Mary Yamada
 James & Nancy Yamamoto
 Tom and Mary Yokoi
 Etsuko B Yoshioka

Kenneth & Emma Sato
 Bill & Betty Satow
 Susumu Satow
 Joe & Miyo Shimashita
 Melvin M Shiramizu
 Geich & Lorraine Soda
 Sachiye Endo Sugita
 Rio & Midori Sunahara
 Frank & Hannah Takahashi
 Dr. Kenneth & Mary Takeda
 Shigeo & Aiko Takeshita
 Deo Tanahara
 Tyler Tanaka
 Minoru & Mary Tonai
 Mitsuo & Anne Uchida
 Bill & Fujie Urakawa
 Richard & Ami Yamagishi
 Mrs. Kazu Yamane
 George & Janet Yorita
 Yukiko Yoshioka

Stephens N. Sato
 Hannah Chiye Satow
 Randall Segawa
 Helene Shimizu
 Shizuko R. Shiramizu
 Mitsu Sonoda
 Hiroko Sumida
 Mary Tachibana
 Mr. & Mrs. Kikuo Takahashi
 George and Kiyoo Takehara
 Duke & May Takeuchi
 Tommy & Evelyn Tanahara
 Shikuo "Shiek" & Chiyono Tanimoto
 Takeshi & May Toyota
 Mitose Umeda
 William & Cora Vetter
 Noby & Ayako Yamakoshi
 Joe & Sonoye Yasuda
 Bartow & Meiko Yoshida
 Masao & Sakae Yuki

Steve S. Sato
 Leo & Dale Satow
 Kenji & Nobuko Sekishiro
 Tokio & Carol Shiomichi
 Helen Shisino
 Richard Specht
 John, June & Tokie Sunahara
 Shinkichi George Tajiri
 Mrs. Mary Takahashi
 Tomiji & Chieko Takehara
 Tak & Dorothy Takeuchi
 Dr Kouichi & Grace Tanaka
 George & Masaye Tanimura
 Tom & Kimiko Tsuboi
 Mr. & Mrs. Herbert Umeda
 Tsuyako Wada
 Hifumi & Ikuko Yamamoto
 Yosh & Akemi Yasuda
 Gary Yoshiomiya
 Thomas Yuki

CATEGORY 2

George & Yoko Aihara
 Kaname K & Sumi Arase
 George & Joan Beitzel
 Fred & Nancy Deguchi
 Frank & Ida Endo
 Dr. Jack & Grace Fujimoto
 Atsuo & Nancy Fukuda
 Terry & Alpha Goto
 Benji & Rose Hara
 Kengo & Mitsuko Hatada
 Ruth Hayashi
 Larry Hirohata
 Sumi Honda
 Ray & Yuriko Hoshizaki
 Mr. & Mrs. Isen Iguchi
 Mike & Alyce Imoto
 Jane Inouye
 Bert & Ruby Ishikawa
 Tom Iwaoka
 Tadao & Sakuye Iwata
 Amy Kakuda
 Stella Katsuki
 Yukio & Mitsuko Kawamoto
 George & Sets Kimura
 Yoshiko Kobata
 Toshiko Kogura
 Kern & Grace Kono
 Alyce Kurihara
 Thomas & Jane Light
 Tsugi Makishima
 Ben & Kaye Masatani
 Kenji & Nancy Matsuda

Beth Amano
 Sid & Jean Arase
 Dorothy Bergeron
 Thomas and Akiko Deloyd
 John Endo
 S. May Fujinaka
 Lily Fukunaga
 Bessie Hamakawa
 John & Tsune Hashiguchi
 Jun Hatakeda
 Tak & Mae Higuchi
 Setsuo & Rose Hisatomi
 Teruko Horikoshi
 Frank & Tuck Ianaka
 George Ikeda
 Sam & Janis Imoto
 Mr & Mrs Mike Inouye
 Eugene & Jane Itogawa
 Masami & Hisako Iwasa
 Kuni & Edith Iwo
 James & Joyce Kameyama
 Hachi & Reiko Kawakami
 Aiko Kawasaki
 Dr. Eugene Kinoshita
 Jack Kobayashi
 Terry & Hisako Koike
 Roy Kubo
 Jane Kusuhara
 Alice Linn
 Finley D. Jr & Jean Marshall
 Helen Masumura
 Jim & Jane Matsueda

Mr & Mrs Masashi R Amano
 Bob & Joan Ariyasu
 Judith Bramson
 Ken & Joan Doi
 Roy Fuji
 Frank Fujita
 Ben & Dorothy Fukutome
 Goichi & Alice Hamamoto
 Masaru & Marcia Hashimoto
 S. Sadie Hatashita
 Rex S. Hime
 Ben & Mikiye Honda
 Mas and Amy Horiuchi
 Ken & May Ichikawa
 Mrs. Noriko Ikeda
 Kimi Inadomi
 Mr & Mrs Mike M Inouye
 Wilbert & Kiyoko Iwami
 Ira & Sumiye Iwata
 Mr. & Mrs. Giichi Kageyama
 Charlie & Miyuki Katayama
 Hodge Kawakami
 Teruo & Kiku Kawata (Rev.)
 Shig & Mary Kitauchi
 George & Joanne Kobori
 Tom & Setsuko Kojima
 Frances Kuraoka
 Frank and Sumiye Kusunoki
 Thomas & Teruko Machida
 Yukio & Masae Maruyama
 Hiroshi & Shizuko Matoba
 Kay Matsueda

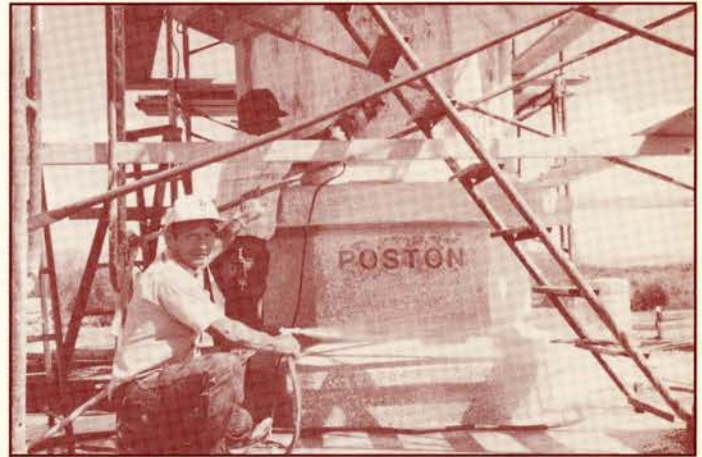
Isamu & Saiko Amioka
 Masato Asakawa
 Shoji and Family Date
 Michiko Eguchi
 Betty Fujimoto
 Sam & Tomoye Fukagawa
 Haruo & Yukie Furuike
 Yoneko Hamamoto
 Sue Hashimoto
 Roy & Clara Hayashi
 Ernie Hiratsuka
 Masami Honda
 Handy Horiye
 Ken Ichiyama
 George Ikemiya
 James Inouye
 Roy Inouye
 George & Bessie Iwaoka
 Mrs. Sachi Iwata
 Kathryn Kakiba
 James Kato
 David and Carol Kawamoto
 Mrs. Faye Kazato
 James & Betty Kobata
 Seiji & Linda Kodama
 Harvey & Jolie Kondo
 Akiko Kuratomi
 Howard & Mae Kuyama
 Romola Maehara
 Ikiko Masaoka
 John and Mickey Matsuda
 Tom & Pat Matsumoto



Installation of the 3 ft. diameter sauna tube form.

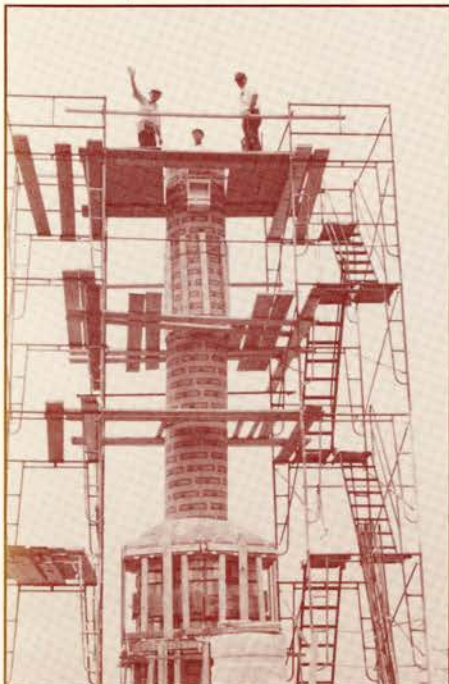


This is not an 8 to 5 job. At the crack of dawn.



Ted Kobata and Mas Sunahara washing off the concrete retardant

Ted Waves to indicate that the monument pour is complete. Sid Arase and Mas Sunahara almost 40 ft. above the landscape.



Putting our name in concrete.
John Sunahara,
Mas Sunahara,
Jim Kobata,
Duke Takeuchi,
Ted Kobata,
Sid Arase,
Jim Namba
and Sus Satow.



Leaving for home after 5 weeks on the job site in Poston, Sus, Ted and George Sato.



POSTON MEMORIAL LIST BY CATEGORY

CATEGORY 2

Toshi Matsuura
 Mitsuo & Yaeko Menda
 Narsuko Miyagi
 Susumu Mori
 Tad & Kimi Muranaka
 Hiroshi & Mae Murayama
 Albert & Fusako Nakai
 Nakamura Family
 George & Sumie Nakayama
 Tom Narimatsu
 Ken Nishi
 Keiichi & May Nitta
 Katashi Oita
 Masaru & Yoshiko Okino
 Frank & Miya Oshita
 Sue Oshita
 George & Akiko Otsuka
 Frances Owan
 Lily Y Sakoda
 George & Shirley Sato
 Kay & Agnes Seki
 Harry & Mae Shigaki
 Mas Shimizu
 Grace Shinn
 Sei & Yasuko Shohara
 Thomas & Emiko Sonoda
 Chiyo Suzukida
 Yoshito & Yoshiye Takahashi
 Shiro & Ikuko Takeshita
 Jo Ann Oki Tanaka
 Michi Tanji
 Helen Ellis Thiele
 Shigeru & Mary Tokiwa
 Dr. Azusa & Haruko Tsuneyoshi
 Robert & Helen Umekubo
 Saburo Uyeji
 Kozuye Wakimoto
 Jiro & Shigeiko Watanabe
 Chiyoko Yagi
 Katsumi Yagura
 Frank & Sonoko Yamamoto
 Shigeto & Rosie Yamamoto
 Mrs. June Yamasaki
 Mrs. Kazuye Yasui
 Edward & Kay Yomogida
 George & Ann Yoshida

Jack & Ihoko Mayeda
 Peggy Mikuni
 Yoko Miyagi
 Shoichi & Alyce Morita
 Susie Murasako
 Yoshi & Grace Nagahiro
 Makiko Nakaji
 Esther Nakashima
 John Namba
 Donald & Mary Negi
 Terry & Sachi Nishida
 George Ohama
 Robert & Mary Oka
 Setsuo & Constance Okino
 Helen Oshita
 Tstomu & Jean Ota
 Mrs. Chizu Ouchi
 Mr & Mrs Joseph Owashi
 Sam Sakoda
 S. Don & Gertrude Sato
 Hideko Seto
 Mr. & Mrs. Frank Shigemi
 Mas Shimizu
 Tom & Nobuko Shiokari
 Dennis Soares
 Shioji & Sharon Sugaya
 Hiroshi & Fumie Tadakuma
 Roy & Mary Takai
 Masa Takeuchi
 Mr. & Mrs. Takuji Tanaka
 Toshi A. Tanouye
 Thomas Toguchi
 Bette Torio
 Hiroshi & Aiko Tsurui
 Ann F. & Dana M. Urata
 Tom & Aiko Uyeoka
 Kozuye Wakimoto
 Yukie Weitl
 Mrs. Akiko Yagi
 Jim Yaji
 Haruko Yamamoto
 Sumiko Yamamoto
 Shige & Rose Yamauchi
 Matsuko Yee
 Lois Yonemoto
 Setsuko Yoshisato

Donald & Lorraine McCarthy
 Norio Mitsuoka
 Robert & Eunice Miyatake
 Jim & Jeanne Motokane
 Ned & Betty Murata
 Shig & Namie Naito
 Allan Nakamura
 Frank & Helen Nakashima
 Minoru & Patricia Namba
 Kunio & Margaret Ninomiya
 Johnnie & Sachi Nishijima
 June & Chisato Ohara
 Jimmy & Kiyoko Okada
 Walter & Yoshiye Osaka
 Jack & Angie Oshita
 Toshio and Mieko Oto
 Torazo Ouchi
 Chiyoko Saiki
 M.M. Sasaki
 Ernest Satow
 Jonnie Shepard
 Amy & Harvey M. Shimada
 George & May Shindo
 Kojiro & Tomiko Shiraishi
 Mutsushi Sogioka
 George and Ruri Sugimoto
 Masaaki & Yaeko Tadamaru
 Nancy Karakane Takaya
 Michi Takeuchi
 Satoru Taniguchi
 Kimiko Yagi Tazoi
 Betty Tokiwa
 Dorothy Treagle
 Mae Uchida
 Frank & Doris Uyeda
 Jack & Karen Wade
 Myrtle Ward
 Robert Wells
 Tommy & Haruyo Yagi
 Asako Hamashima Yamamoto
 James & Yuriko Yamamoto
 Kenneth & Doris Yamane
 Emil & Miyo Yappert
 Skipper & Lois Yee
 Carole Yoko Yoshida
 Rose Shiramizu Yura

Frank & Hanaye Menda
 Henry Miwa
 George Mizuno
 Shinichi Mukai
 Atsuko Murayama
 Sammy & Grace Nakagawa
 Kiyoko Kay Nakamura
 L. H. & Y. C. Nakashima
 Roy & Arlyne Namba
 Henry & Joanne Nishi
 Gladyce Nishita
 Natomi Ohara
 Wade & Nova Okamuro
 Misao Oshiro
 Mrs. Helen Oshita
 Eileen Otsuji
 Minoru & Bernice Ouye
 Roy & Mae Sakasagawa
 Sadayoshi Sasaki
 Toshiko Satow
 Katsumi & Keiko Shiba
 Dr. Robert & Jane Shimada
 Mitsuye Shingai
 Harry Shiramizu
 Elsie Sogo
 Ralph Jr. and Pearl Sugimoto
 Tom & Sally Takahashi
 Jane Takeshita
 Dr. & Mrs. Robert Tanaka
 Kazuo & Mitzie Tanizawa
 Margaret Terada
 Bob Tokiwa
 Joe Tsuboi
 Joe & Ayako Umeda
 Roy & Kiyoko Kay Uyehata
 Rev Lloyd & Marion Wake
 Rose Y. Watamura
 Frances Wiley
 Tom & Eiko Yaguchi
 Dr. Masao Yamamoto
 Masaru Yamamoto
 Chikara & Takaye Yamasaki
 Mary Yasui
 Paul & Yoshie Yokoi
 Edna Yoshida
 Mr. Yasu Zeno

CATEGORY 1

Hideo & Lola Abe
 Henry Akutagawa
 Betty Arai
 Mollie Burrows
 Valerie Demaree
 Lewis & Beti Downs

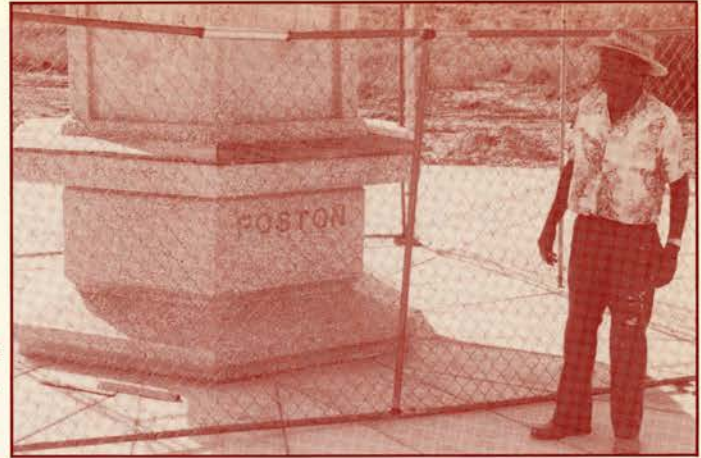
Hisao & Chikako Abe
 Richard & Marian Amimoto
 Mark & Itsuko Asada
 Emi Chamberlain
 Hisaye Desoto
 Masao & Haruye Endo

Harry & Mae Adachi
 Don and Peggy Aoki
 Hisao & Akiyo Ashida
 Kim Combs
 Frank & May Doi
 Tak and Yoko Endo

Bob & Nanette Akahori
 Doris Aoki
 Teruko Border
 Roy H. Deguchi
 Howard & Tatsuko Dolloff
 Hollis & M. Price Engle



Ted Kobata and George Yomogida adjust drinking fountain water flow. A very welcome donation from Tom Takehara and families on these hot Arizona days.



Kay Urukawa finishes the task of putting up the protective chain fencing.



Two Georges, Oki and Yomogida, put finishing touches with chipping hammers.

Final touches...

The checkered walkway to the plaza. Ted Kobata made an ingenious device to create this pattern with the aid of polyethylene film.



Brian Masunaga and Rick Hobbs unload the palm trees from Riverside, California.



Jim Kobata, Oscar Satow and Kay Urukawa tugging the stubborn cable.

POSTON MEMORIAL LIST BY CATEGORY

CATEGORY 1

Jerry and Dorothy Enomoto
 Craig Fujii
 Jean Fujita
 Yachiyo Fukunaga
 Mrs. Misato Furuike
 Arline Goodrich
 Hiroshi Hamada
 Isao Hane
 Masako Harada
 Betsy Hatakeyama
 Akitoshi & Fumiko Higashi
 Dale & Mae Hirasuna
 Richard Horikawa
 Mrs. Emily Igarashi
 Susumu & Sadako Ikeda
 Ben & Terrie Inouye
 Kimiko Inouye
 Roberta Itani
 Yoshio & Ritsuko Iwasa
 Harvey & Barbara Iyama
 Shizuo Kajioka
 John & Alice Kanada
 Paul Kaneyuki
 Kazuo & Memiko Kato
 Irene "Dukie" Kawahata
 Fusaye Kazaoka
 Kenneth Kimura
 Jim & Betty Kobata
 George Kono
 Teruko Koshiyama
 Karen Kunimura
 Terry & Kelley Kurihara
 Irene Masumoto Kuromiya
 Evelyn Loomis
 Miyako Machida
 Liane Lorenzini Martin
 Tom Masamori
 Richard & May Matsuda
 Suyemi Matsumoto
 Ray & Theresa Mayeda
 William and Sayo Mine
 Minoru & Kazuko Miyamura
 Miyoko Mizuno
 Shizuye Morita
 K. & F. Mukai
 Tak Naito
 Isamu Nakamura
 Toyoko Nakatogawa
 Fred & Haruye Nishida
 Edith Nishimura
 Satoru & Letty Hisako Nitta
 Cereice (Kate) O'Hara
 Hatsumi Ogata
 Taya & George Ogawa
 Satoshi Okamoto

Lorraine Enomoto
 Tom & Amie Fujimoto
 Shigeru & Ruby Fujiwara
 Roy and Misako Fukushima
 Yoshio & Sandie Furuike
 Ruth Gray
 Michiko Hamada
 Chiyeko Sato Harada
 Mark & Michiko Hashimoto
 Mary Hatashita
 George Higuchi
 Frank Hirata
 George & Chiyo Hosaka
 George Ikeda
 Arthur & Gloria Imagire
 Betty Inouye
 Oscar Inouye
 Harry & Miyoko Ito
 Charles & Margaret Iwashita
 Pete & Florence Izumi
 Tomio & Sachiko Kajioka
 Tad & Takako Kanemoto
 Ichiko Kataoka
 Tak, Mr. and Mrs. Kato
 James & Tomiko Kawamura
 Jeffrey Kimoto
 Miyoko Kimura
 James & Nobu Kobayashi
 Akira & Atsuko Kosaka
 Tomiko Kozuma
 Masaru & Doris Kunimura
 May Kurimoto
 Y.R. Kusumoto
 Akira & Joan Loveridge
 Melvin G., DDS Inc. Maeda
 Frank & Shin Maruyama
 Hisaye Masutani
 Roy & Grace Matsueda
 Kazuo & Katherine Matsumura
 Mildred McNeill
 Alice Misumi
 Akira & Michiko Miyoda
 George Morikawa
 Chieko Moriyama
 Reiko Murphey
 Wally & Sumi Nakagami
 Mitsuro & Kiyomi Nakano
 George & Sumie Nakayama
 Kimiko Nishikawa
 George & Mary Nishimura
 Satoshi Nitta
 Haruye & Takashi Obata
 Jonathan & Kyoko Ogawa
 George & Kazue Ohno
 Thomas Okazaki

James & Blanche Fairbairn
 Yuki Fujimoto
 Minoru & Hana Fukuhara
 Isamu Furuike
 Teiji & Fumi Futamase
 Florence Griffen
 Teruko Dorothy Hamada
 Edythe Harada
 Eben Haskell
 James & Janet Hayashi
 Harry & Joyce Hiraoka
 Fred & Doris Hirotani
 Lawrence & Laurie Huey
 Mine Ikeda
 Harry & Mary Imamura
 David Inouye
 Takashi & Dorothy Ishizue
 Mr. & Mrs. Dan Ito
 Dr. Richard H. Iwata
 Marie Jenkins
 Hiroshi & Tamii Kamei
 Sam & Aya Kanemura
 Fusako Kato
 Mary Kawabata
 Mrs. Chizuko Kawano
 Patricia N Kimoto
 Howard & Celeste Kitagawa
 Kimiko Kodani
 Makoto and Shizuko Koshimizu
 Dr. Sumio & Ada Kubo
 Sidney & Hiroko Kunitake
 Peggy Kurimoto
 Ray & Yuki Kyono
 Edward & Ayako Machida
 Harold & Violet Makishima
 Katsumi Maruyama
 Tad & Kaye Matoi
 Yoshiro Matsuhara
 Kenichi & Bessie Matsuo
 Molly K Michida
 Frank & Helen Mito
 Kazuye Kay Miyoko
 Asayo Sue Morita
 Jane Mukai
 Ed & Lily Nagata
 Chiyo Nakagawa
 Mollie Nakasaki
 Michael & Tomiko Nakayama
 Sue Nishikawa
 George Nishioki
 John & Kimi Noguchi
 Frank Oda
 Joseph & Margie Ogawa
 Sumio & Hisa Okadayashi
 George & Gladys Okino

Ciferri & Nattie Flavio
 Amy Fujimura
 Robert & May Fukunaga
 Mr. & Mrs. K. B. Furuike
 John & Setsuko Fuyuumme
 Mr. Akimi Gyotoku
 Katherine Hanamoto
 Jimmy & Toshiko Harada
 Martha Haskell
 Wade & Beulah Head
 Joe & Mary Hirase
 Tom & Yo Honda
 Takeo & Yoshiko Ichikawa
 Mitsuo & Alma Ikeda
 Kimi Inadomi
 Kei Inouye
 Hatsumi Tashiro Itani
 Noboru and Belle Ito
 James & Miyoko Iwata
 Otis & Kiyoko Kadani
 Carmel & Evelyn Kamigawachi
 Chester & Kimie Kaneyuki
 Helen Kato
 Robert Kawahara
 Shigeo & James Kawano
 Robert & Betty Kimoto
 Jack & Shizuko Kitahata
 Yoshiichi & Marjori Konishi
 Yukie Koshimizu
 Goro & Kazue Kudo
 Jane S Kunugi
 Shigemi & Lillian Kuroda
 Derrick Lim
 Kiyo Machida
 Louise Malmborg
 Rev Saburo & Marion Masada
 Shoji & Helen Matsubara
 Saburo & Sachiko Matsui
 Keichi & Florence Matsushita
 George & Satsue Mikami
 Mutsuko Miyakawa
 Richard & Yoshiko Miyoshi
 Gloria Morita
 Jiro & Michiko Mukai
 Stanley & Haruye Nagata
 Kay & Elaine Nakahara
 Kinjiro & June Nakatogawa
 Henry & Lillian Niizawa
 William & Louise Nishikawa
 Fred & Takako Nishizawa
 Laraine Noto
 Elizabeth Ogata
 Peter & Marie Ogawa
 Grace Okamoto
 Alice Okuno

*The final concrete
pour of the walkway,
September 18, 1992.*



*This panoramic photo captures
the scale and grandeur of the
Poston Memorial Monument.
The mountains and mesa that
we watched many sunrises on
the eastern horizon 50 years
ago from Poston.*



POSTON MEMORIAL LIST BY CATEGORY

CATEGORY 1

Shirley Omori
 Kazuma & Kikue Oyama
 Masato & Kazuko Ozaki
 Narumi Sadahiro
 Irene Saiki
 Kaye & Kim Sakamoto
 Fumiko Sasaki
 Nobuichi & Amy Sato
 Yoshiko Sato
 John & Katherine Shigemoto
 Fusa Shimizu
 Makoto and Kikue Shirai
 Tei Sugi
 Mrs. Lily Y Taka
 Ron Takao
 Yo Takehara
 Frank & Kinuye Tanaka
 Harumi Tanibuchi
 Charles & Fumiko Tanimura
 Mikio Tokiwa
 Yoshio Toyota
 Motoo & Angelina Tsuneyoshi
 Earry Urakawa
 Lorraine Wakayama
 Lou & Gene Watanabe
 Chiyeko Anne Yagura
 Yuri Yamada
 Frank & Helen Yamakoshi
 Junichi & Dorothy Yamamoto
 Akira & Lily Yamashita
 Miwako Yamamoto

Chiyeko Ono
 Minoru Oyama
 Kenneth, Dr. and Leatrice Ozawa
 George & May Sahara
 Paul Sakai
 Ruth & Joe Sakamoto
 Jim & Fujiko Sasaki
 Ronald & Audrey Sato
 Takashi & Beverly Sawasaki
 Hiroshi & Chiyeko Shikuma
 Toyo Shimizu
 Toru & Mae Shishido
 Joey Sumida
 Eva Takahashi
 Suzie Takata
 Jean Takei
 Russell & Megumi Tanaka
 George & Amy Taniguchi
 Kiyoshi & Susie Tateishi
 Mr. & Mrs. Duke Tokiwa
 Richard Tsuda
 Marvin & Aiko Tsutsui
 Tak & Miyo Urakawa
 Frank & Jane Watanabe
 Sam & Rose Watanabe
 Craig Yama
 Alyce Yamaguchi
 Hiroshi & June Yamamisaka
 Mrs. Anna Yamamoto
 Masao & Shizuko Yamauchi
 Himeko Yokoe

Masashi & Mollie Osato
 Ted & Sunako Sunki Oye
 Mary Reyno
 Henry & Irene Sahara
 William Sakai
 Torao Sakamoto
 Thomas and Peggy Sasaki
 Tom & Kimi Sato
 Ben & Kathy Segawa
 Gene & Elsie Shimamoto
 Richard & Elene Shindo
 Momoa Smith
 Chiyoko Suzuki
 Lloyd & Charlotte Takahshi
 Dorothy Takatsuno
 Yoshiko Takemoto
 James & Marian Tanda
 Kazuto & Mitty Taniguchi
 Haruo Tazumi
 Thomas & Susie Tomihiro
 Tomio & Frances Tsuda
 Bette Uchida
 Hiroshi & Aline Wada
 Harry H & Judy J Watanabe
 Mrs. Alma Watari
 Edward Yamada
 James Yamaguchi
 Bob & Tee Yamamoto
 Shogo & Grace Yamaoto
 Tom & Sumiko Yanagihara
 Feb & Amy Yokoi

Takeshi Ota
 Joe & Aiko Ozaki
 Mrs. Ruby Romovich
 Emi Yokoyama Saiki
 Don Sakamoto
 Chiyo Sasaki
 Henry & Iney Sato
 William Sato
 Lois & Thomas Shellhammer
 Hideko Shimasaki
 Seiichi Shinoda
 Takeshi Sugaya
 Dr. Akira & Naomi Tajiri
 Sadako Takaki
 Tsutomu Takeda
 Sally S. Taketa
 Kiichi & June Tange
 Kiyoshi & Alyce Taniguchi
 Masashi Tazumi
 Charley & Betty Torio
 Masayoshi & Grace Tsuida
 Kiyu Uda
 Tad & Frances Wada
 Kay Watanabe
 Frank Yada
 Mitsuo & Miyoko Yamada
 Tad Yamaguchi
 George Yamamoto
 Florence Yamasaki
 Katsuyoshi & Yaeko Yanagitani
 Shigeo and Rose Yokote

Thank You!

Your generous contributions have made the Poston Memorial Monument possible. Because of the ongoing reoccurring maintenance and upkeep, you may desire to make contributions in the future. You will find a pre-addressed envelope on page 27 for your convenience. Again, thank you for your contribution, and we will appreciate it if you will tell a friend or encourage a former Postonian.

George Makishima
 PMMF, Treasurer

CATEGORIES

6	\$1,000 up
5	500-999
4	250-499
3	100-249
2	50- 99
1	- 49

Partial Listing

ACKNOWLEDGEMENTS

IT IS DIFFICULT TO FIND WORDS TO EXPRESS OUR SINCERE GRATITUDE AND APPRECIATION TO THE MANY PERSONALITIES WHO HAVE CONTRIBUTED TIME, EFFORT, AND COUNTLESS HOURS OF TOIL IN NUMEROUS TASKS TOWARDS THIS MASSIVE PROJECT WHICH BEGAN MORE THAN THREE YEARS AGO.

...TED T. KOBATA, FOR HIS PROFESSIONAL EXPERTISE, SKILL, PLANNING, LOAN OF THE MANY TOOLS OF THE CONSTRUCTION TRADE AND HIS LEADERSHIP TO RAMROD THIS PROJECT TO ITS COMPLETION...FOR NEARLY THREE MONTHS OF LIVING ON THE JOB SITE IN POSTON, ARIZONA.

...TO THE "AGING" VOLUNTEER CREW FOR YOUR COUNTLESS HOURS OF TOIL IN THE HOT ARIZONA SUN IN THE BUILDING OF THIS MAGNIFICENT MONUMENT. YOUR DETERMINATION TO COMPLETE THIS PROJECT IS PROOF POSITIVE THAT YOU STILL HAVE "IT" WHEN YOU SET YOUR MIND TO IT.

...DANIEL EDDY, JR., CHAIRMAN AND THE COLORADO RIVER INDIAN TRIBE'S COUNCIL MEMBERS FOR YOUR COOPERATION AND CONTRIBUTION OF THE LAND TO BUILD AND ERECT THIS MONUMENT.

...THE CRIT DEPARTMENT HEADS AND STAFF FOR EXPEDITING THE PROCESS AND COOPERATION AND FRIENDLY ASSISTANCE HAVE MADE THIS TASK EASIER AND POSSIBLE.

...BRIAN MASUNAGA AND TAKEHARA LANDSCAPE FOR THE PLANTING OF THE PALM TREES AND INSTALLATION OF THE DRIP IRRIGATION SYSTEM.

...DAVID ARNOLD OF L.A. SALES FOR HAULING THE PALM TREES TO ARIZONA.

...TOM AND TOSHI TAKEHARA AND FAMILY FOR THE DONATION OF THE DRINKING FOUNTAIN.

...RAY TAKATA, FAIA, DESIGN OF THE POSTON MONUMENT; STEPHEN HAMAMOTO, CE ENGINEERING

...HODGE KAWAKAMI, ARCHITECT, DRAWINGS FOR THE INITIAL MONUMENT.

...ALVIN AND DOROTHY KUNISHI, SACRAMENTO TOFU FOR A STEADY SUPPLY OF FRESH TOFU AND TOFU MILK.

...THE MANY VENDORS AND CONTRACTORS THAT PARTICIPATED IN THE BUILDING OF THE MONUMENT.

...THE MANY COMMITTEE PERSONS WITH VARIOUS TASKS FROM WRITING THE MONUMENT TEXT, ACCOUNTING AND DISPERSING FUNDS, KEEPING MINUTES, PLANNING A BARBEQUE LUNCH IN PARKER AND MYRIADS OF TASKS IN PLANNING AND DETAILING THE NUMEROUS "THINGS" THAT MUST BE DONE TO PUT A PROJECT TOGETHER AND ITS COMPLETION.

...THE MANY GENEROUS DONORS AND IN KIND CONTRIBUTIONS TOWARDS THE POSTON MEMORIAL MONUMENT.

...AND TO EVERYONE WHO CONTRIBUTED THEIR TALENTS IN SOME WAY BEHIND THE SCENES.

...WE ARE ALL VERY PROUD OF THE POSTON MONUMENT AND THANK ALL OF YOU FOR YOUR PARTICIPATION ON DEDICATION DAY, 6 OCTOBER 1992.

OTSUKARE SAMA DESHITA!
DOMO ARIGATO!

THANK YOU FROM THE BOTTOM OF OUR HEARTS.

THE COLORADO RIVER INDIAN TRIBES

DANIEL EDDY, JR., CHAIRMAN
RUSSELL WELSH, VICE CHAIRMAN
JAMES R. ALCAIDA, SECRETARY
ELDRED ENAS, TREASURER

and

COUNCIL MEMBERS:
CONNOR BYESTEWA, JR.
HERMAN D. LAFFOON, JR.
LaWANDA E. LAFFOON
DENNIS R. PATCH
RAYFORD H. PATCH

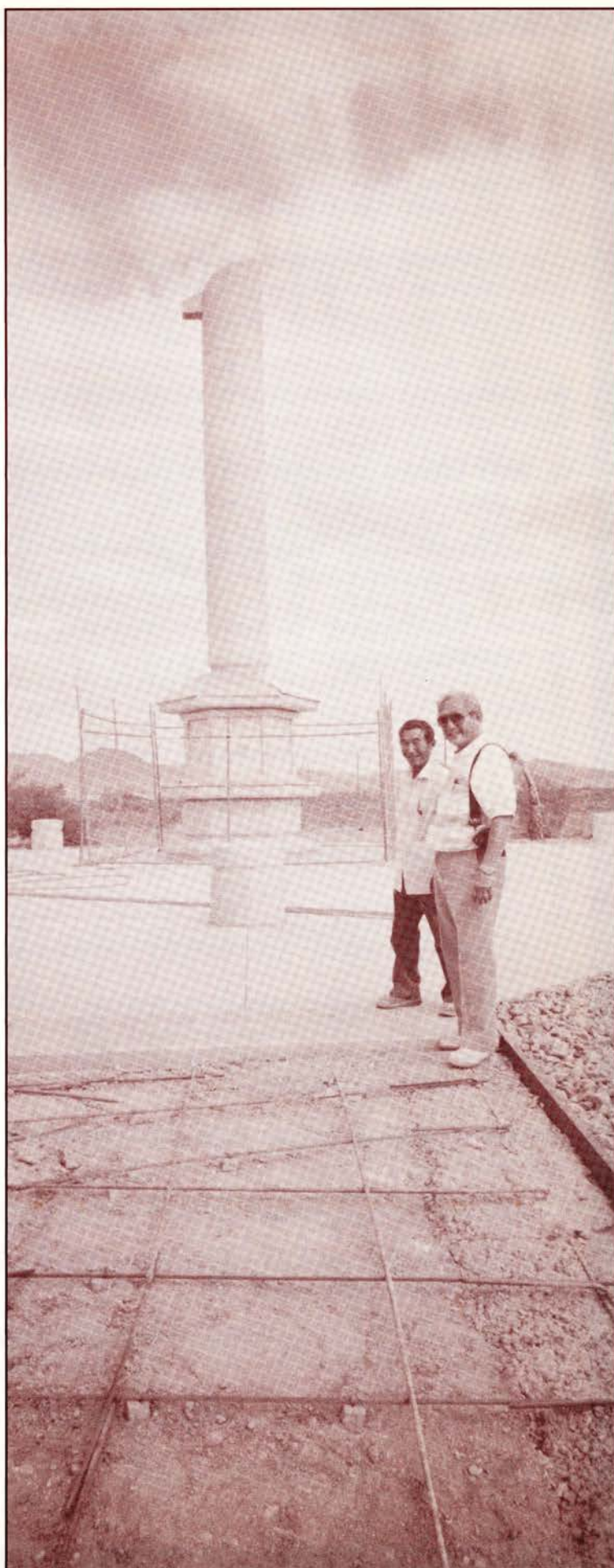
THE POSTON MEMORIAL MONUMENT COMMITTEE

CO-CHAIRS:

GEORGE S. OKI, SR.
KEI HIGASHI HANNAH SATOW
GEORGE MAKISHIMA, TREASURER
MAY TAKEUCHI, SECRETARY
TED KOBATA, CHIEF OF CONSTRUCTION

OSAME DOI JIM NAMBA
SADAKO FURUIKE NAT OHARA
BESSIE HAMAKAWA JOAN OKI
VI HATANO JAMES SAKAMOTO
ROY HAYASHI LILLIAN SATOW
DAN INOUE OSCAR SATOW
MASAMI IWASA MAE SHIGAKI
KERN KONO JOHN SUNAHARA
TOM MASAMORI SUE YAMAMOTO

*Ted T. Kobata and
George S. Oki, Sr.,
inspect the walkway
to the plaza. The final
concrete pouring and
placement, Friday,
18 September 1992.*





EPILOGUE . . .

. . . as time went by we relocated . . . to Salt Lake City, Chicago, Cleveland, Philadelphia, New Jersey . . . to further our education or to seek gainful employment . . . to Camp Shelby or Camp Savage to serve our nation . . . some never to return . . . the supreme sacrifice . . .

. . . V-J Day and later peace . . . the imminent closure of Poston, some returning to their former home sites . . . others elsewhere . . . to start life anew . . . the challenges were many and enormous . . . but so were opportunities . . .

. . . the Nikkei have done well . . . agriculture, business, doctors, educators, flower growers, lawyers, politicians to zoologists . . . in every walk of life a Nikkei has excelled . . . raised families . . . participated in local civic affairs . . . built new churches . . . senior citizen centers . . . business and professional careers . . .

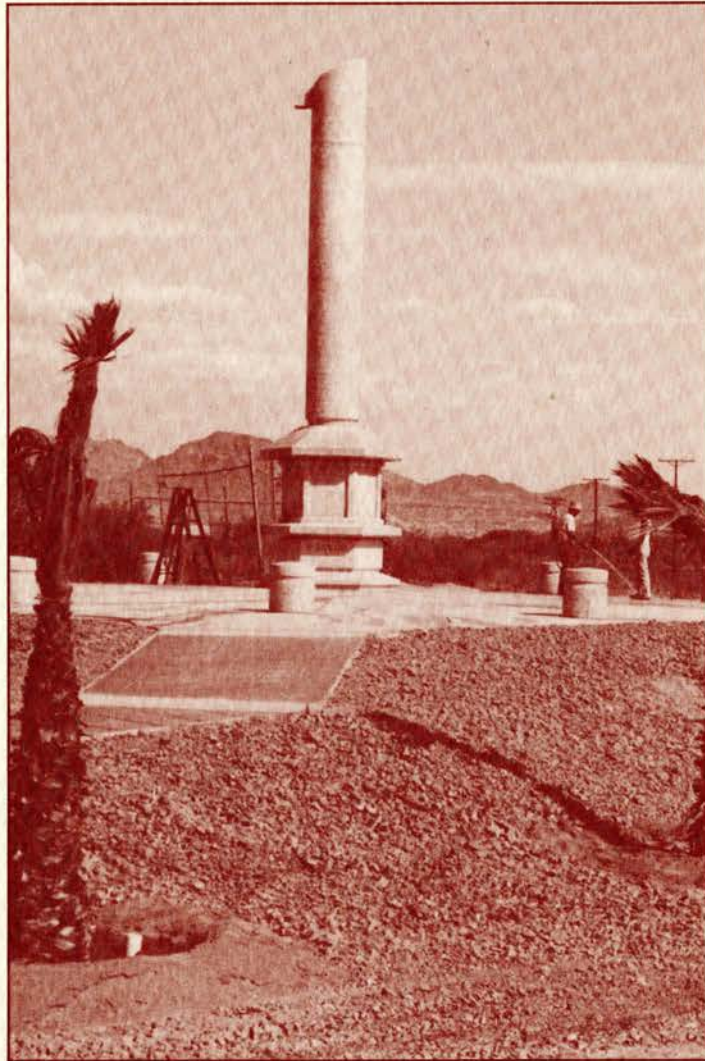
. . . the Issei population gets "thinner" with each passing day . . . the Nisei grayer, older and retiring from a lifelong career . . . the Sansei approaching the peak of his career or education . . . the younger Yonsei seeped in education or enjoying their grandparents . . .

. . . we have almost come full circle . . . many reparations have been made . . . formal apologies . . . legislative bills to complete the reparations appears imminent . . . we have dedicated this magnificent monument . . . in observance of fifty years since evacuation and internment . . . reaffirming our conviction and to ensure that the constitutional rights are very sacred . . . that the tragic events of 1942-1945 will never again be repeated . . . leaving another legacy . . . our history, culture . . . but most important our children . . . and "As Time Goes By" their children . . .

PLEASE MAIL YOUR CONTRIBUTIONS TO:

Poston Memorial Monument Fund
IRS #95-1276018
C/O Union Bank, Downtown Office
P.O. Box 1167
Sacramento, CA 95806

POSTON MEMORIAL MONUMENT



ARCHITECT
RAY TAKATA, FAIA

ENGINEERING
STEPHEN HAMAMOTO, CE

CONSTRUCTION
TED T. KOBATA