

NeverFreeze® Snow Melting Cable for Concrete

PRODUCT DESCRIPTION

Installing the NeverFreeze® Snow Melting System provides a permanent solution to the problems caused by cold weather, improves safety by providing reliable relief from snow and ice, and expands your bottom line by reducing the cost associated with applying chemicals, maintaining snow clearing equipment and hiring outside services.

FEATURES AND BENEFITS

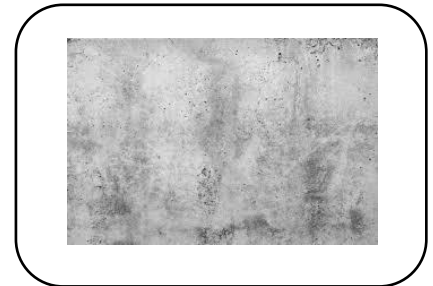
- Ideal for driveways, parking lots, sidewalks, stairs, ramps, bridges and many other applications.
- For use in concrete, asphalt, under pavers or stone, and ceramic or stone tile.
- Single point connection.
- Twin conductor cable.
- Silent, efficient, and safe.
- Emits zero EMF (electromagnetic fields). Easy and flexible installation.
- Durable construction.
- 10-year limited warranty against manufacturing defects.
- Operates automatically by digitally sensing moisture and temperature.
- Versatile and easy to install.
- Eliminates costly plowing and labor-intensive snow removal.
- Reduces risk of slips and falls.

APPROVALS

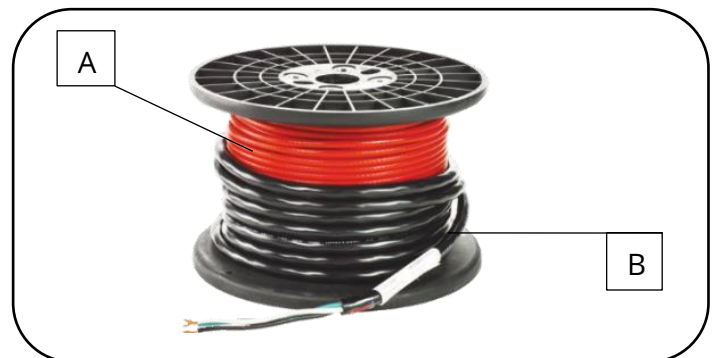


APPLICATIONS

- Concrete



CONSTRUCTION



A. Cable

Twin conductor 240V Fluoropolymer/XLPE PVC insulated cable.

B. Lead Wire

20' lead wires provided to connect to the power source.



HEATING CABLE SELECTION GUIDE

1. Calculate Heating Cable Quantity

According to the heated space's layout and dimensions, calculate how many cables are needed to properly fit the area.

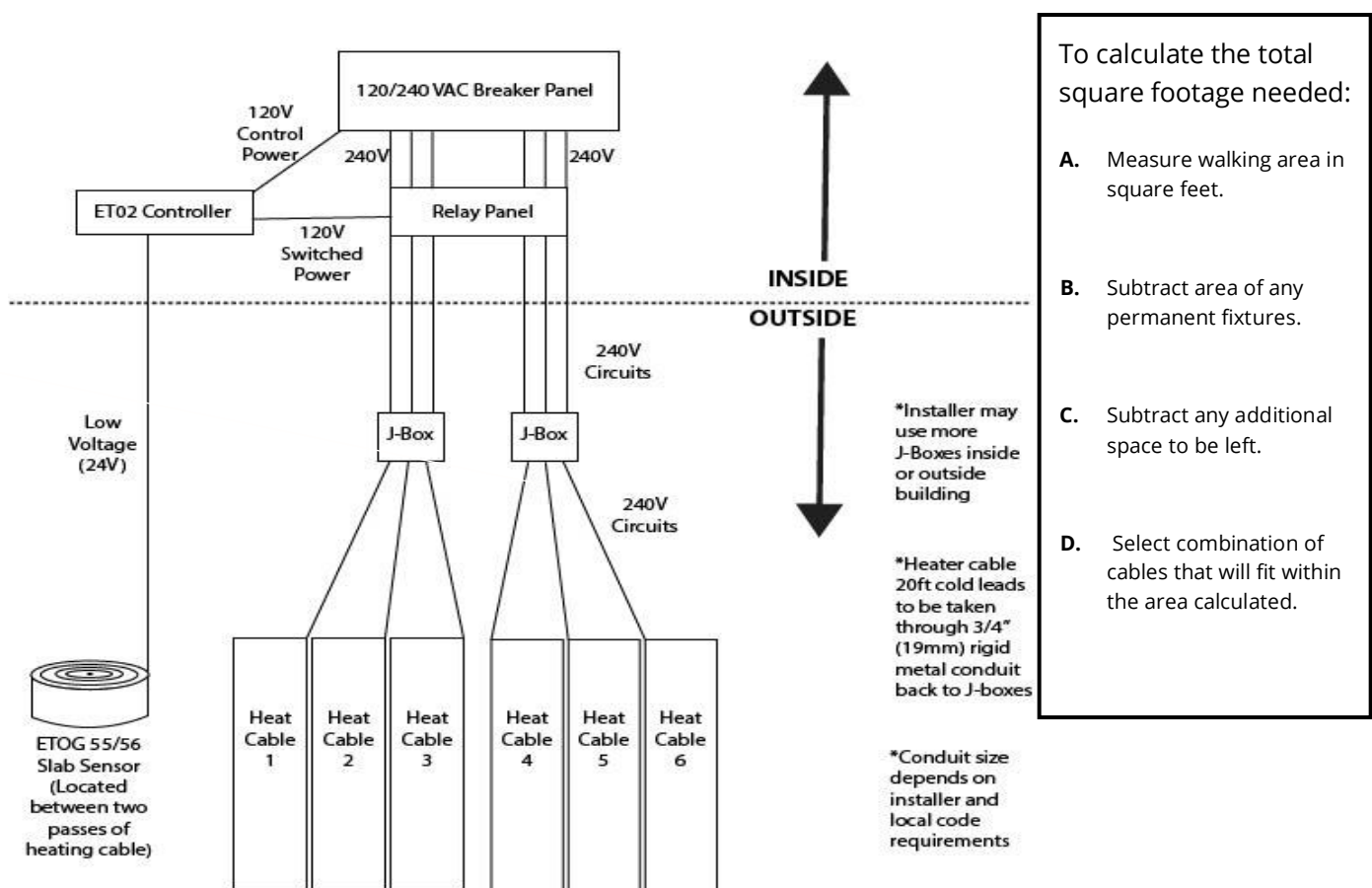
2. Select Appropriate Cable Size

Consult Sizing/Pricing chart table in this publication for guidance. Determine appropriate cables, controllers/sensors and relay combination according to the size and requirements of your project. Please call ThermoSoft® for assistance at (800) 308 -8057.

3. Consult User Manual

Refer to user manual for specifics and directions. Always consult a licensed electrician.

240V Snow Melt - 6 Circuits/Cables with ET02 Control



IMPORTANT NOTES ON CABLE SELECTION

- NeverFreeze® snow melting cable cannot be installed indoors or in areas requiring a hazardous classification.
- NeverFreeze® snow melting cable cannot be used for gutter or pipe freeze protection or roof snowmelt.
- Do not install the cable on or under non-masonry stairs or decks such as wooden or composite construction.
- Do not cut cable. Doing so will cause damage and result in voided warranty.
- For more information, call (800)308-8057 or visit ThermoSoft.com.



WARRANTY & MAINTENANCE

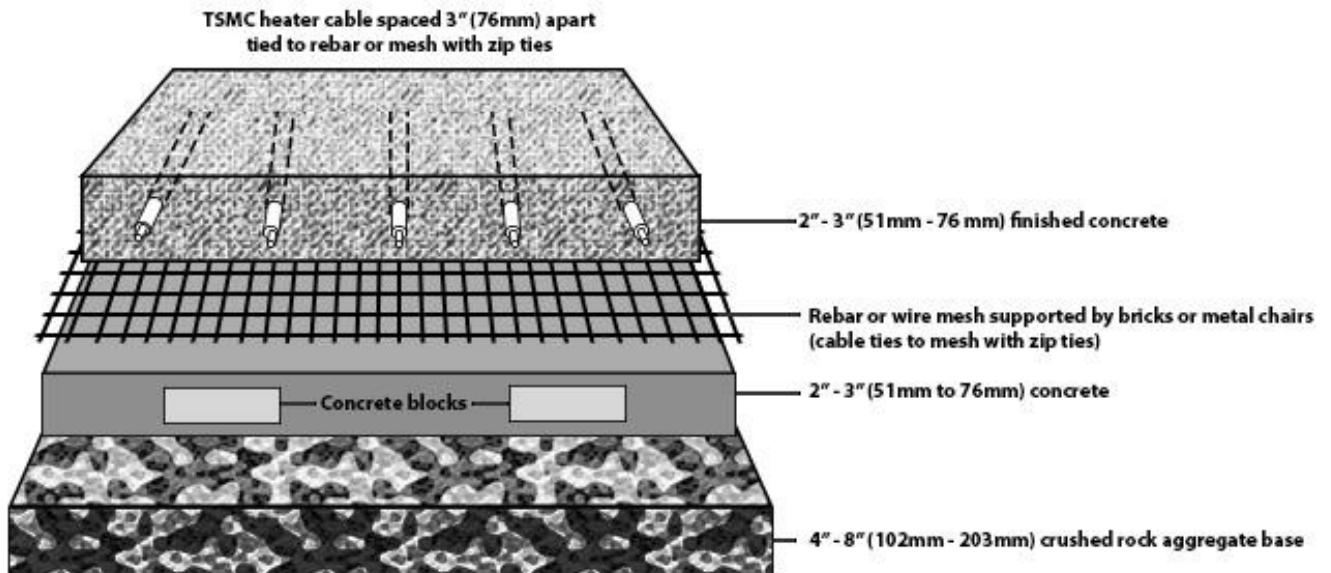
When installed according to the installation manual and proper testing has been performed throughout, the system requires no maintenance for the duration of its warranted life.

The ThermoSoft® NeverFreeze® Snow Melting Cables are warranted for 10 years against manufacturer's defects. See www.ThermoSoft.com for full warranty details.


SEE ALSO

- NeverFreeze® Snow Melting Mats
- NeverFreeze® Roof and Gutter Deicing Cables/System

Outdoor Concrete Snow Melting Installation



NEVERFREEZE® SNOW MELTING CABLE IS AVAILABLE 240 VOLT IN THESE LENGTH

	SKU	Length Ft.	Coverage S.F. @ Cable Spacing			Output		
			3"	4"	5"	Watts	Amps	Ohms
			60W/S.F.	45W/S.F.	36W/S.F.			
240V	TSMC36-240	36		12	15	540	2.3	106.7
	TSMC55-240	55	13.8	18.3	22.9	810	3.4	71.1
	TSMC90-240	90	22.5	30	37.5	1350	5.6	42.7
	TSMC165-240	165	41.3	55	68.8	2500	10.4	23
	TSMC220-240	220	55	73.3	91.7	3300	13.8	17.5
	TSMC255-240	255	63.8	85	106.3	3820	15.9	15.1
	TSMC290-240	290	72.5	96.7	120.8	4350	18.1	13.2
	TSMC330-240	330	82.5	110	137.5	4950	20.6	11.6
	TSMC370-240	370	92.5	123.3	154.2	5500	22.9	10.5
	TSMC420-240	420	105	140	175	6300	26.3	9.1

CONTROLLERS – SENSORS

Code	Description
OJ - ETO2 - 4550	Snow/Ice Melt Controller 3 X 16-amp load capacity: 2 Zone control capability
OJ - ETOP - 4770	Snow/Ice Melt Controller 3 x 30-amp load capacity: Single Zone
OJ - ETOG - 55	Ground Sensor for detecting temperature and moisture
OJ - ETOG - 56/ETOK	Ground Sensor for detecting temperature and moisture with sensor tube (for asphalt applications)
OJ - ETF - 744/99	Outdoor temperature sensor for ETO2
OJ - ETOR - 55	Gutter moisture sensor
Relay Panels	4 pole 8 pole 12 pole options

ACCESSORIES

ThermoSoft® has a complete line of accessories specifically designed for use NeverFreeze®. Use only NeverFreeze® accessories to ensure the performance of the system.

Code	Description
INSTALRM	InstAlarm Monitor for Short or Open Circuits During Installation. Available in Following Kits: TT Deluxe Install Kit (IK-TAMKGS), TT Safe Install Kit (IK-TAM), TF Install Toolkit (IK-DAMK), TT Basic Install Toolkit (IK-TA)
MULTIMTR	Digital Multimeter for Monitoring Electrical Resistance During Installation. Available in Following Kits: TT Deluxe Install Kit (IK-TAMKGS), TT Safe Install Kit (IK-TAM), TF Install Toolkit (IK-DAMK)
OJ ETO 2 BOX	Mounting Box for ETO2 controller
ETOP - R	Remote control for ETOP 4770 controller
ETOP - R - RB	Remote control for ETOP 4770 including mounting box
Repair Kit	Snow melt system repair kit

TECHNICAL SUPPORT

ThermoSoft® is available at (800)308-8057.

For quotes, layouts and specific technical information, contact us at:

ThermoSoft International Corporation
 701 Corporate Woods Parkway, Vernon Hills, IL 60061
 Support@ThermoSoft.com
 www.ThermoSoft.com



Scan here to go to the product page

